

Data Path : Z:\pestpcbsrv\HPCHEM1\ECD_P\Data\PP010522\
 Data File : PP042550.D
 Signal(s) : Signal #1: ECD1A.CH Signal #2: ECD2B.CH
 Acq On : 05 Jan 2022 17:10
 Operator : AJ\MA
 Sample : I.BLK
 Misc :
 ALS Vial : 2 Sample Multiplier: 1

Instrument :
 ECD_P
 ClientSampleId :

Integration File signal 1: autoint1.e
 Integration File signal 2: autoint2.e
 Quant Time: Jan 05 17:09:25 2022
 Quant Method : Z:\pestpcbsrv\HPCHEM1\ECD_P\methods\PP010422.M
 Quant Title : GC EXTRACTABLES
 QLast Update : Wed Jan 05 12:01:35 2022
 Response via : Initial Calibration
 Integrator: ChemStation 6890 Scale Mode: Small noise peaks clipped

Volume Inj. : 2 µl
 Signal #1 Phase : ZB-MR2 Signal #2 Phase: ZB-MR2
 Signal #1 Info : 30Mx0.32mmx 0.50µ Signal #2 Info : 30M x 0.32mm x 0.25µm

Compound	RT#1	RT#2	Resp#1	Resp#2	ng/ml	ng/ml

System Monitoring Compounds						
1) SA Tetrachlo...	4.880	4.047	415647	551417	21.455	21.065
2) SA Decachlor...	10.819	9.389	251948	441024	21.476	22.441
Target Compounds						
7) L1 AR-1016-5	6.679	0.000	816	0	1.889	N.D. #
9) L2 AR-1221-2	5.225	0.000	3249	0	20.532	N.D. #
20) L4 AR-1242-5	7.136f	0.000	294	0	0.891	N.D. #
23) L5 AR-1248-3	6.679	0.000	816	0	1.434	N.D. #
24) L5 AR-1248-4	7.105	0.000	1877	0	3.357	N.D. #
25) L5 AR-1248-5	7.136f	0.000	294	0	0.536	N.D. #
26) L6 AR-1254-1	7.105f	0.000	1877	0	3.082	N.D. #
27) L6 AR-1254-2	7.316	0.000	733	0	0.798	N.D. #
28) L6 AR-1254-3	7.696	0.000	15301	0	16.702	N.D. #
29) L6 AR-1254-4	8.016f	0.000	1545	0	2.580	N.D. #
30) L6 AR-1254-5	8.409	0.000	931	0	1.473	N.D. #
31) L7 AR-1260-1	7.877	0.000	844	0	1.388	N.D. #
32) L7 AR-1260-2	8.133	7.090f	1450	23933	2.061	15.742 #
33) L7 AR-1260-3	8.502	0.000	1086	0	1.960	N.D. #
34) L7 AR-1260-4	8.726	0.000	2844	0	4.311	N.D. #
35) L7 AR-1260-5	9.052	0.000	5746	0	4.764	N.D. #
36) L8 AR-1262-1	8.502	0.000	1086	0	1.387	N.D. #
37) L8 AR-1262-2	9.052	0.000	5746	0	4.297	N.D. #
38) L8 AR-1262-3	9.353	0.000	1198	0	1.818	N.D. #
39) L8 AR-1262-4	9.442	0.000	3203	0	6.628	N.D. #
40) L8 AR-1262-5	10.080	0.000	896	0	1.837	N.D. #
41) L9 AR-1268-1	9.342	0.000	2463	0	1.505	N.D. #
42) L9 AR-1268-2	9.442	0.000	3203	0	2.118	N.D. #
43) L9 AR-1268-3	9.680f	0.000	7905	0	5.874	N.D. #
44) L9 AR-1268-4	10.080	0.000	896	0	1.638	N.D. #
45) L9 AR-1268-5	10.482	0.000	1087	0	0.244	N.D. #

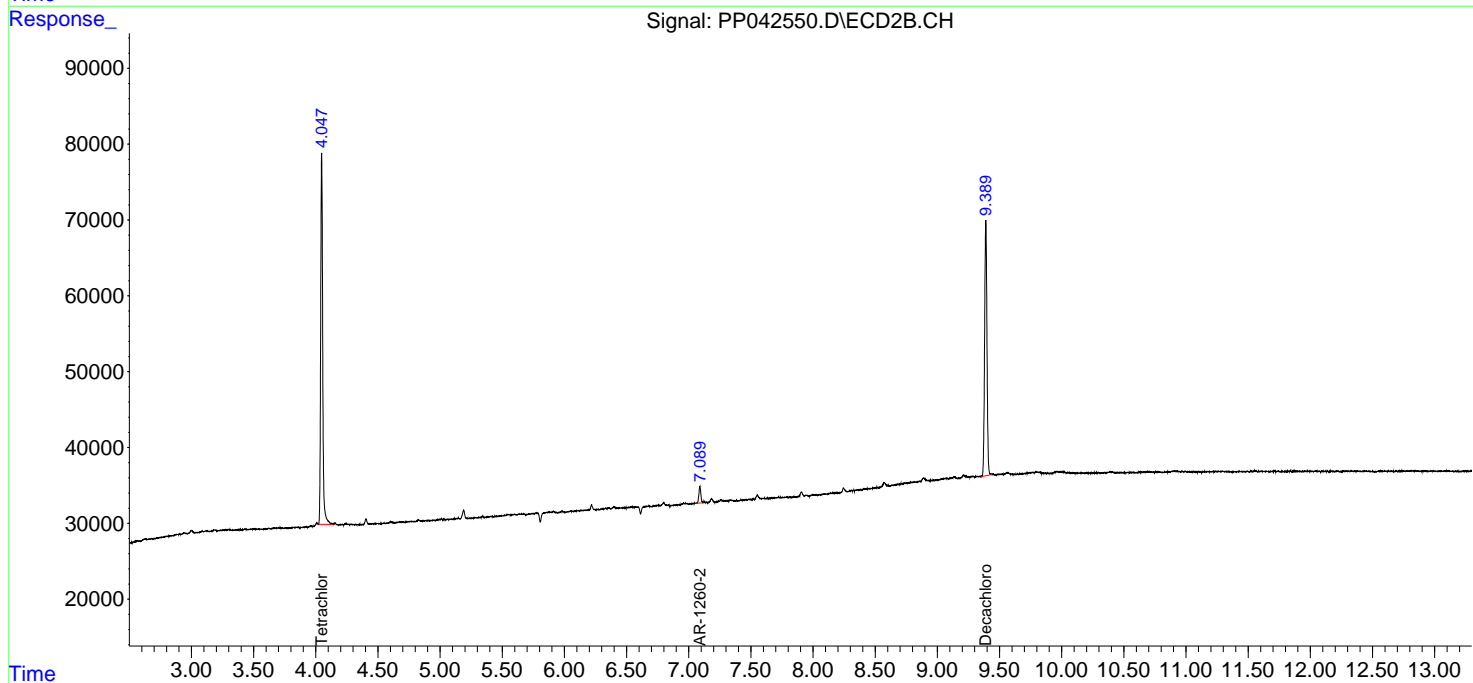
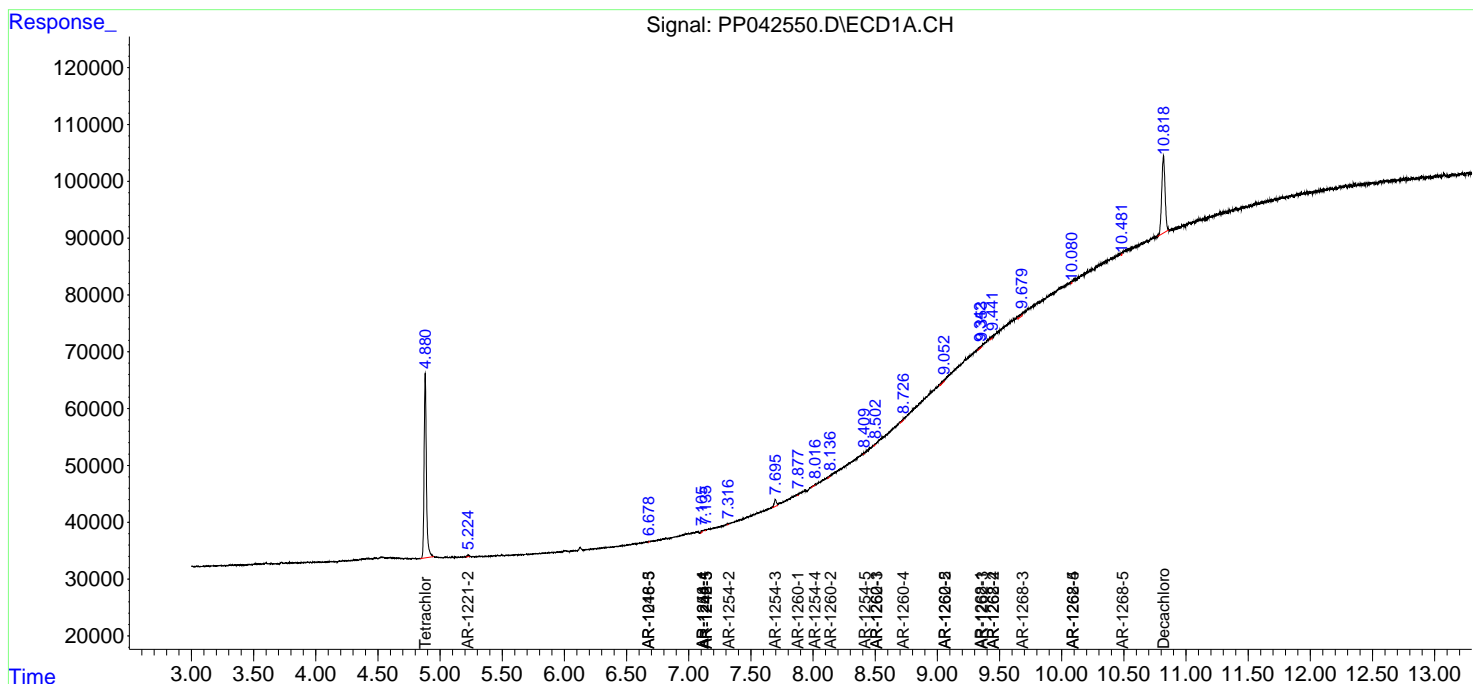
(f)=RT Delta > 1/2 Window (#)=Amounts differ by > 25% (m)=manual int.

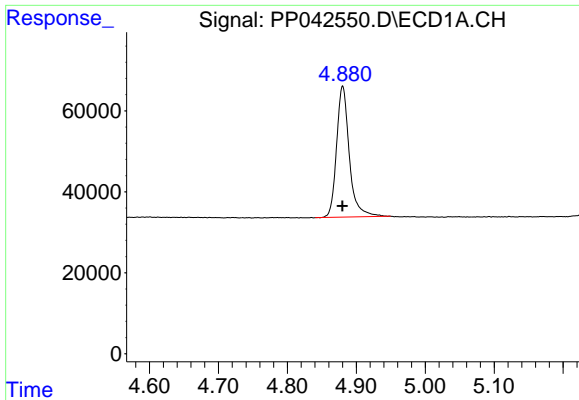
Data Path : Z:\pestpcbsrv\HPCHEM1\ECD_P\Data\PP010522\
 Data File : PP042550.D
 Signal(s) : Signal #1: ECD1A.CH Signal #2: ECD2B.CH
 Acq On : 05 Jan 2022 17:10
 Operator : AJ\MA
 Sample : I.BLK
 Misc :
 ALS Vial : 2 Sample Multiplier: 1

Instrument :
 ECD_P
 ClientSampleId :

Integration File signal 1: autoint1.e
 Integration File signal 2: autoint2.e
 Quant Time: Jan 05 17:09:25 2022
 Quant Method : Z:\pestpcbsrv\HPCHEM1\ECD_P\methods\PP010422.M
 Quant Title : GC EXTRACTABLES
 QLast Update : Wed Jan 05 12:01:35 2022
 Response via : Initial Calibration
 Integrator: ChemStation 6890 Scale Mode: Small noise peaks clipped

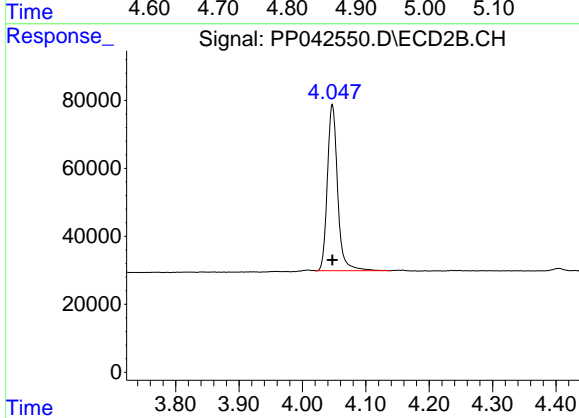
Volume Inj. : 2 µl
 Signal #1 Phase : ZB-MR1 Signal #2 Phase: ZB-MR2
 Signal #1 Info : 30Mx0.32mmx 0.50µ Signal #2 Info : 30M x 0.32mm x 0.25µm



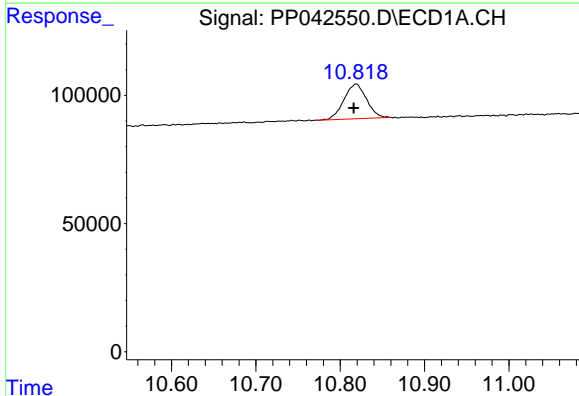


#1 Tetrachloro-m-xylene
 R.T.: 4.880 min
 Delta R.T.: 0.000 min
 Response: 415647
 Conc: 21.45 ng/ml

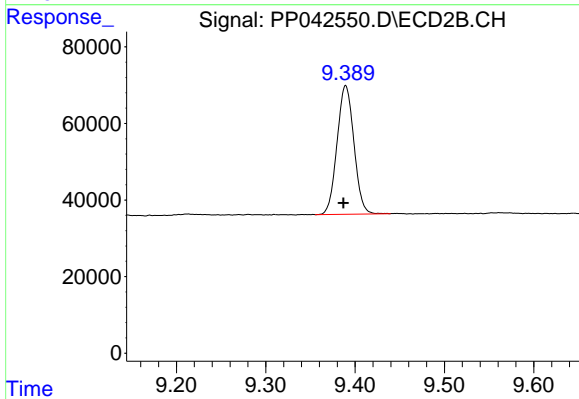
Instrument :
 ECD_P
 ClientSampleId :



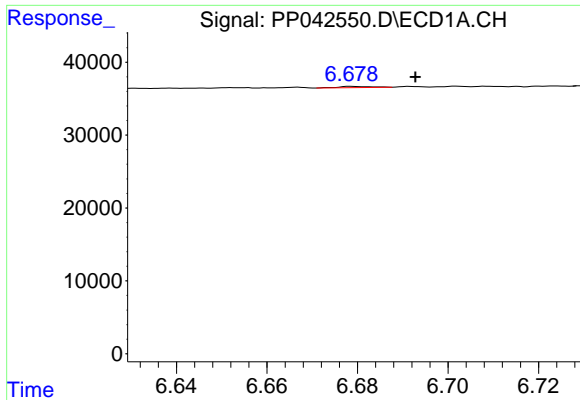
#1 Tetrachloro-m-xylene
 R.T.: 4.047 min
 Delta R.T.: 0.000 min
 Response: 551417
 Conc: 21.06 ng/ml



#2 Decachlorobiphenyl
 R.T.: 10.819 min
 Delta R.T.: 0.003 min
 Response: 251948
 Conc: 21.48 ng/ml



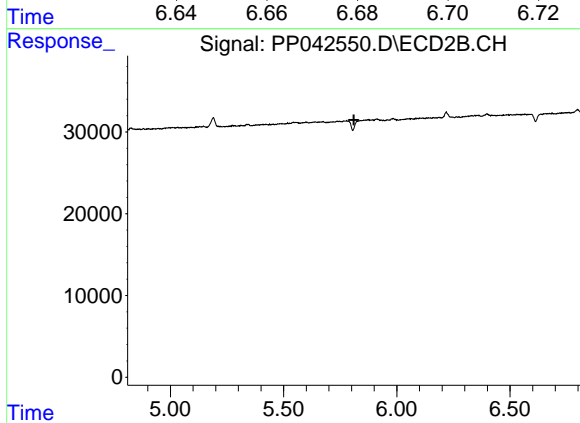
#2 Decachlorobiphenyl
 R.T.: 9.389 min
 Delta R.T.: 0.003 min
 Response: 441024
 Conc: 22.44 ng/ml



#7 AR-1016-5

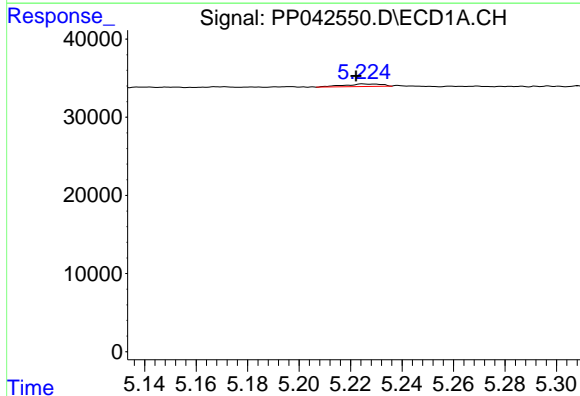
R.T.: 6.679 min
 Delta R.T.: -0.014 min
 Response: 816
 Conc: 1.89 ng/ml

Instrument :
 ECD_P
 ClientSampleId :



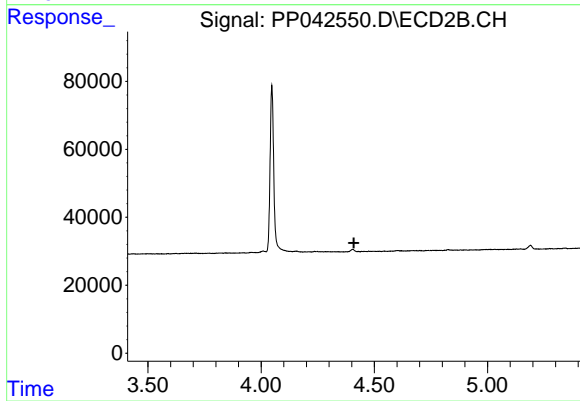
#7 AR-1016-5

R.T.: 0.000 min
 Exp R.T. : 5.811 min
 Response: 0
 Conc: N.D.



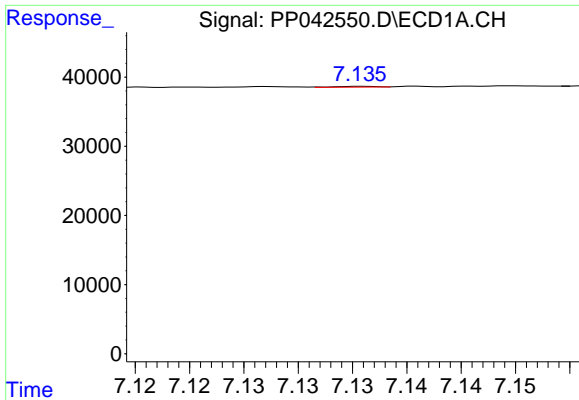
#9 AR-1221-2

R.T.: 5.225 min
 Delta R.T.: 0.003 min
 Response: 3249
 Conc: 20.53 ng/ml



#9 AR-1221-2

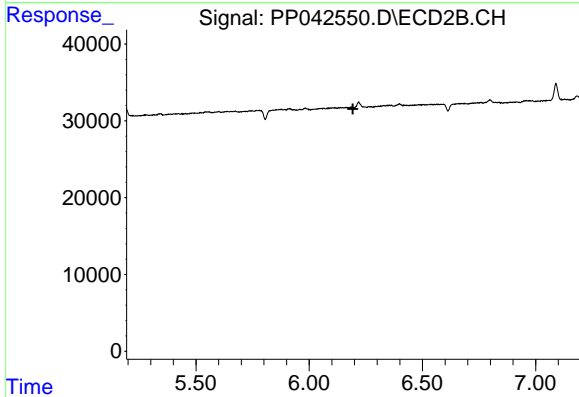
R.T.: 0.000 min
 Exp R.T. : 4.410 min
 Response: 0
 Conc: N.D.



#20 AR-1242-5

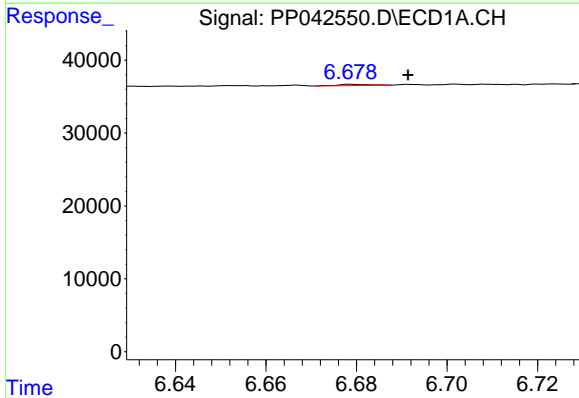
R.T.: 7.136 min
 Delta R.T.: -0.022 min
 Response: 294
 Conc: 0.89 ng/ml

Instrument :
 ECD_P
 ClientSampleId :



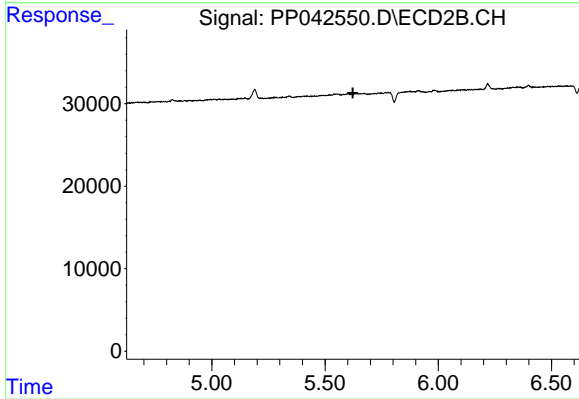
#20 AR-1242-5

R.T.: 0.000 min
 Exp R.T. : 6.193 min
 Response: 0
 Conc: N.D.



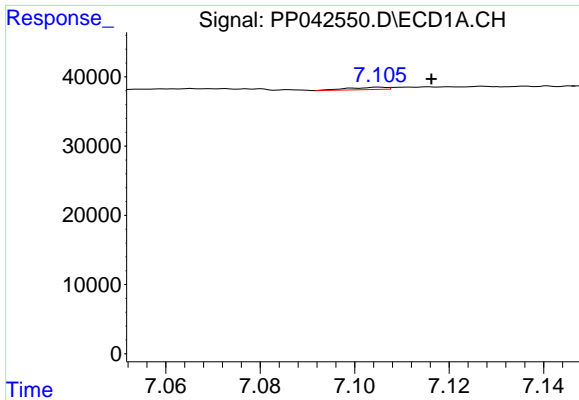
#23 AR-1248-3

R.T.: 6.679 min
 Delta R.T.: -0.013 min
 Response: 816
 Conc: 1.43 ng/ml



#23 AR-1248-3

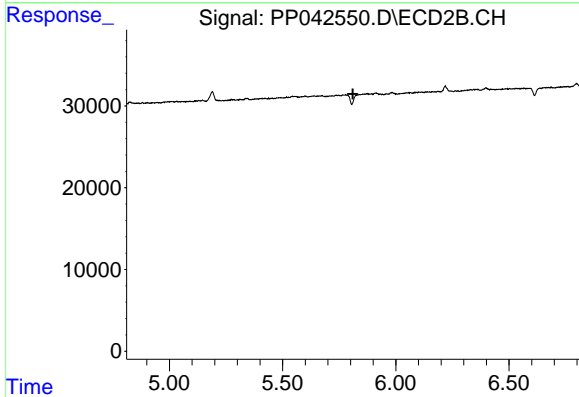
R.T.: 0.000 min
 Exp R.T. : 5.623 min
 Response: 0
 Conc: N.D.



#24 AR-1248-4

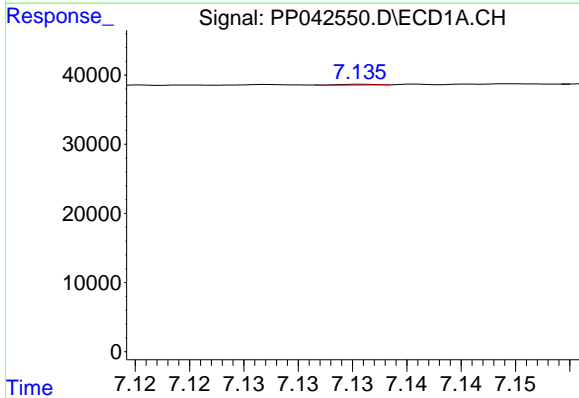
R.T.: 7.105 min
 Delta R.T.: -0.011 min
 Response: 1877
 Conc: 3.36 ng/ml

Instrument :
 ECD_P
 ClientSampleId :



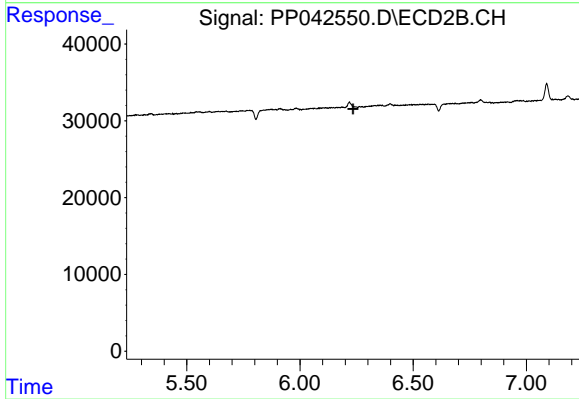
#24 AR-1248-4

R.T.: 0.000 min
 Exp R.T. : 5.810 min
 Response: 0
 Conc: N.D.



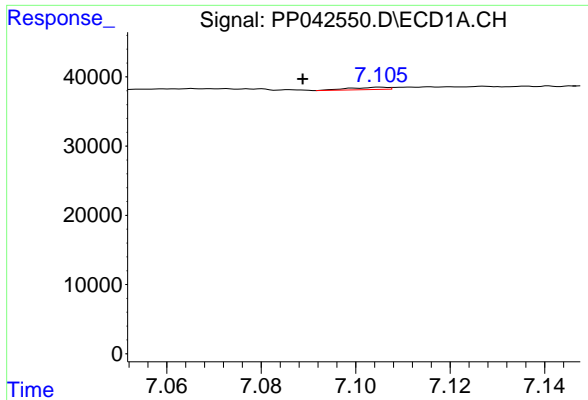
#25 AR-1248-5

R.T.: 7.136 min
 Delta R.T.: -0.020 min
 Response: 294
 Conc: 0.54 ng/ml



#25 AR-1248-5

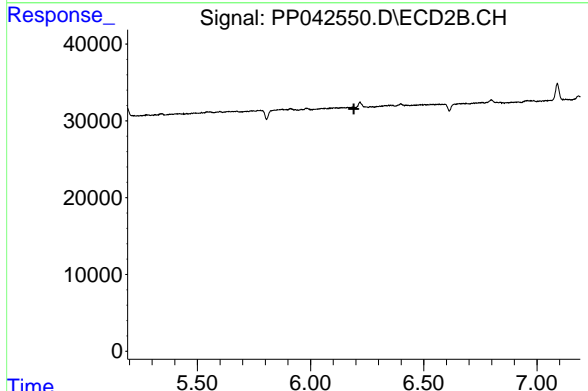
R.T.: 0.000 min
 Exp R.T. : 6.234 min
 Response: 0
 Conc: N.D.



#26 AR-1254-1

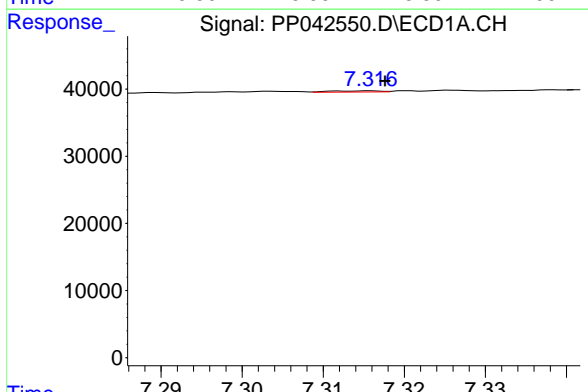
R.T.: 7.105 min
 Delta R.T.: 0.016 min
 Response: 1877
 Conc: 3.08 ng/ml

Instrument :
 ECD_P
 ClientSampleId :



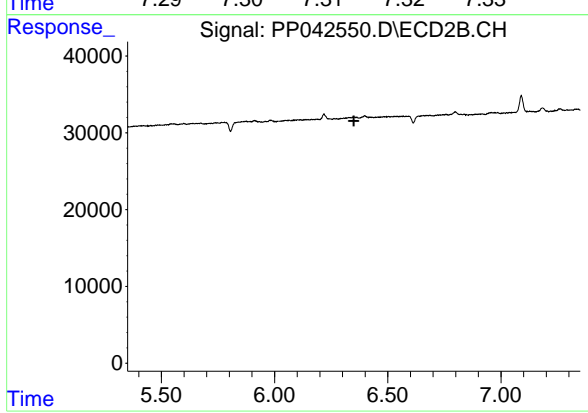
#26 AR-1254-1

R.T.: 0.000 min
 Exp R.T. : 6.191 min
 Response: 0
 Conc: N.D.



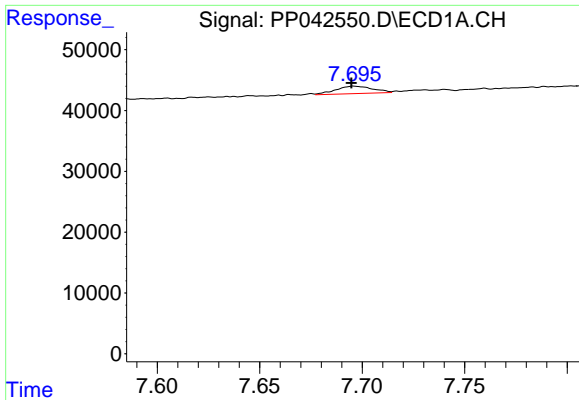
#27 AR-1254-2

R.T.: 7.316 min
 Delta R.T.: -0.002 min
 Response: 733
 Conc: 0.80 ng/ml



#27 AR-1254-2

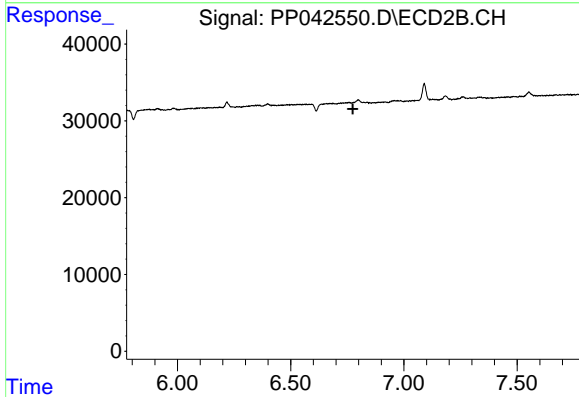
R.T.: 0.000 min
 Exp R.T. : 6.350 min
 Response: 0
 Conc: N.D.



#28 AR-1254-3

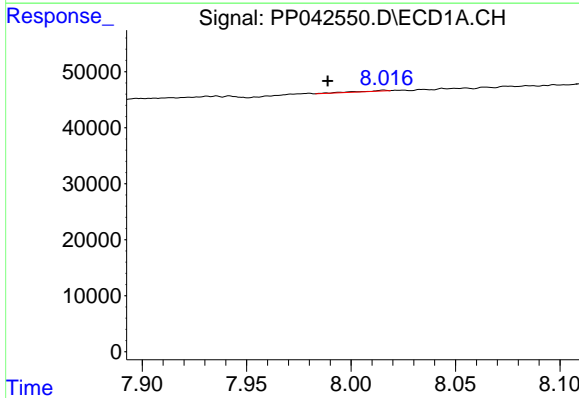
R.T.: 7.696 min
 Delta R.T.: 0.000 min
 Response: 15301
 Conc: 16.70 ng/ml

Instrument :
 ECD_P
 ClientSampleId :



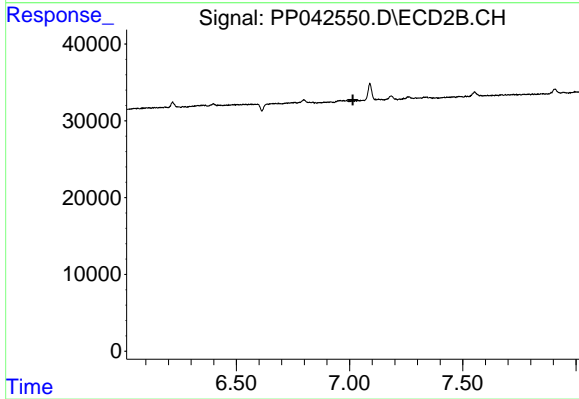
#28 AR-1254-3

R.T.: 0.000 min
 Exp R.T. : 6.774 min
 Response: 0
 Conc: N.D.



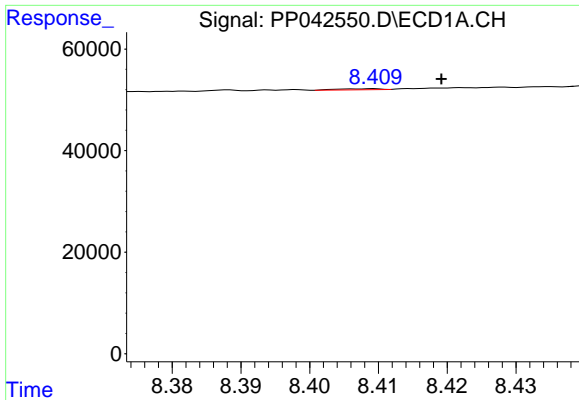
#29 AR-1254-4

R.T.: 8.016 min
 Delta R.T.: 0.027 min
 Response: 1545
 Conc: 2.58 ng/ml



#29 AR-1254-4

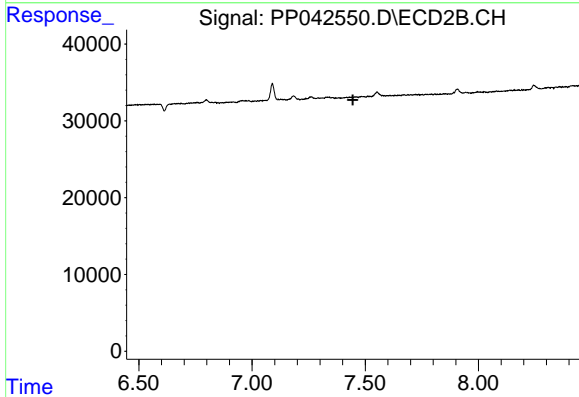
R.T.: 0.000 min
 Exp R.T. : 7.014 min
 Response: 0
 Conc: N.D.



#30 AR-1254-5

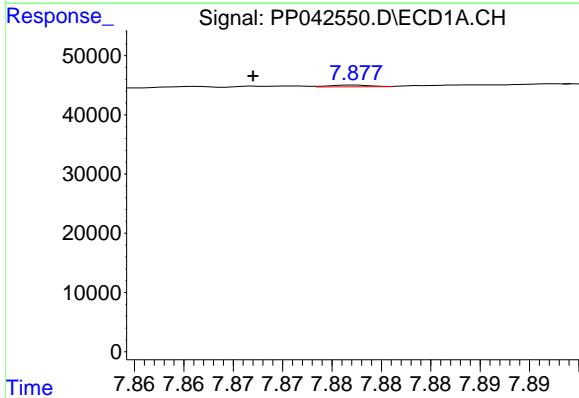
R.T.: 8.409 min
 Delta R.T.: -0.010 min
 Response: 931
 Conc: 1.47 ng/ml

Instrument :
 ECD_P
 ClientSampleId :



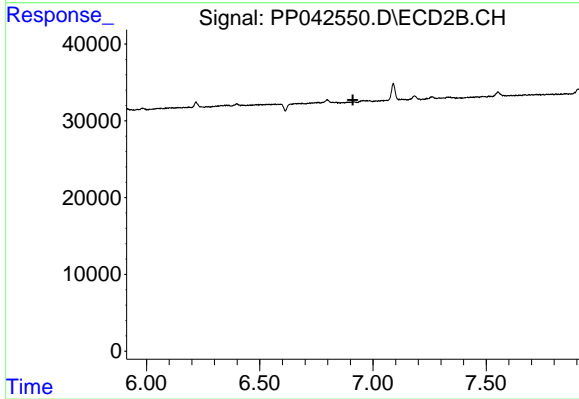
#30 AR-1254-5

R.T.: 0.000 min
 Exp R.T. : 7.445 min
 Response: 0
 Conc: N.D.



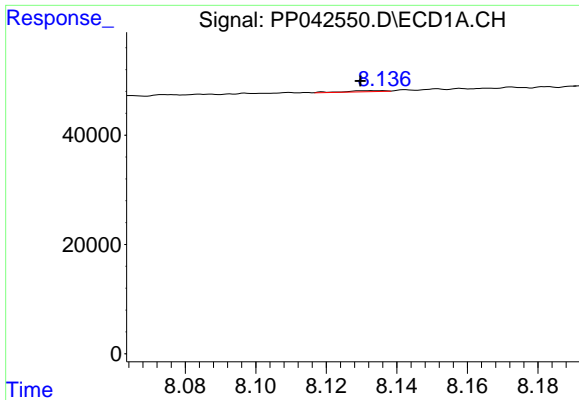
#31 AR-1260-1

R.T.: 7.877 min
 Delta R.T.: 0.010 min
 Response: 844
 Conc: 1.39 ng/ml



#31 AR-1260-1

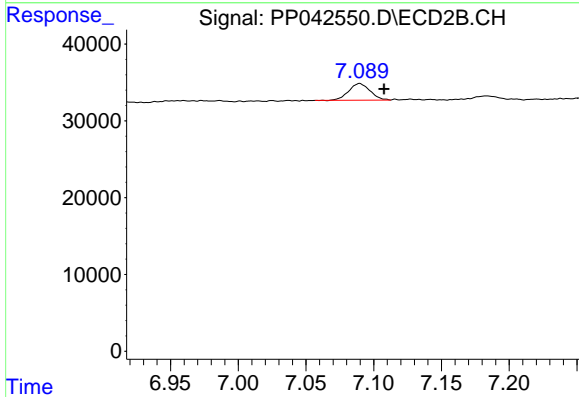
R.T.: 0.000 min
 Exp R.T. : 6.911 min
 Response: 0
 Conc: N.D.



#32 AR-1260-2

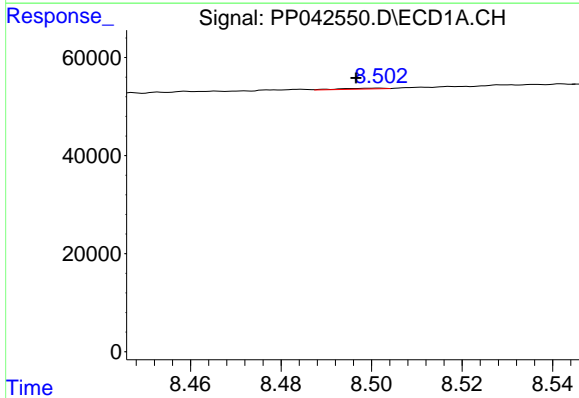
R.T.: 8.133 min
 Delta R.T.: 0.004 min
 Response: 1450
 Conc: 2.06 ng/ml

Instrument :
 ECD_P
 ClientSampleId :



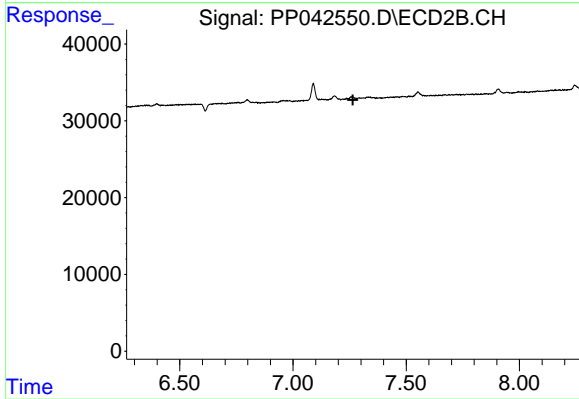
#32 AR-1260-2

R.T.: 7.090 min
 Delta R.T.: -0.018 min
 Response: 23933
 Conc: 15.74 ng/ml



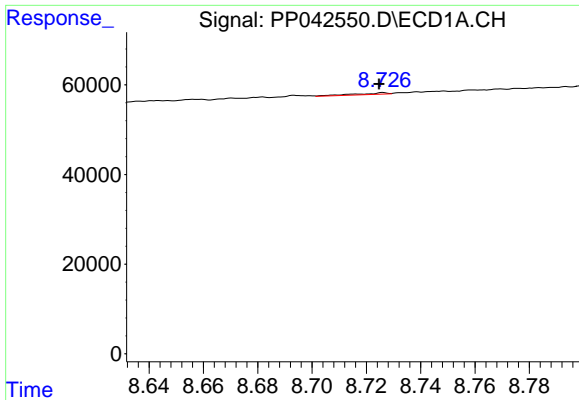
#33 AR-1260-3

R.T.: 8.502 min
 Delta R.T.: 0.005 min
 Response: 1086
 Conc: 1.96 ng/ml



#33 AR-1260-3

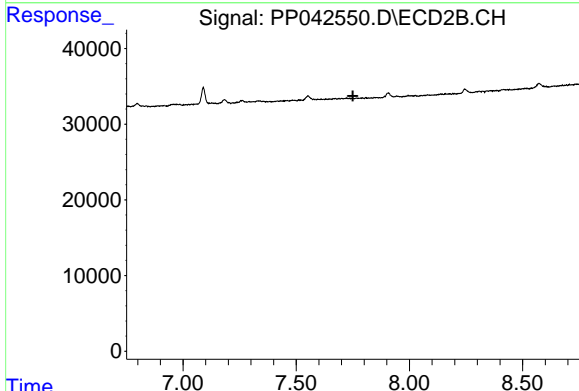
R.T.: 0.000 min
 Exp R.T.: 7.264 min
 Response: 0
 Conc: N.D.



#34 AR-1260-4

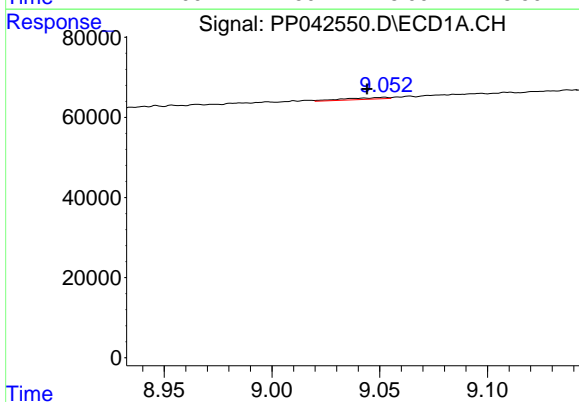
R.T.: 8.726 min
 Delta R.T.: 0.001 min
 Response: 2844
 Conc: 4.31 ng/ml

Instrument :
 ECD_P
 ClientSampleId :



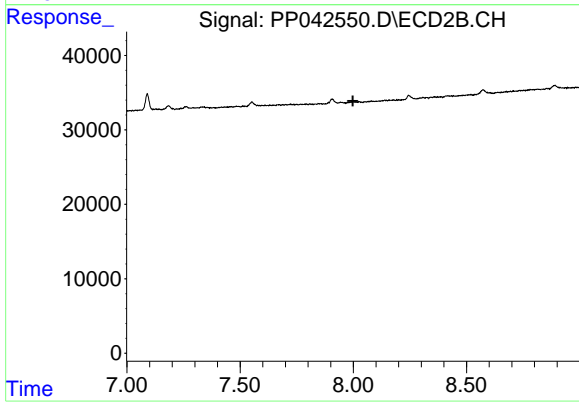
#34 AR-1260-4

R.T.: 0.000 min
 Exp R.T. : 7.750 min
 Response: 0
 Conc: N.D.



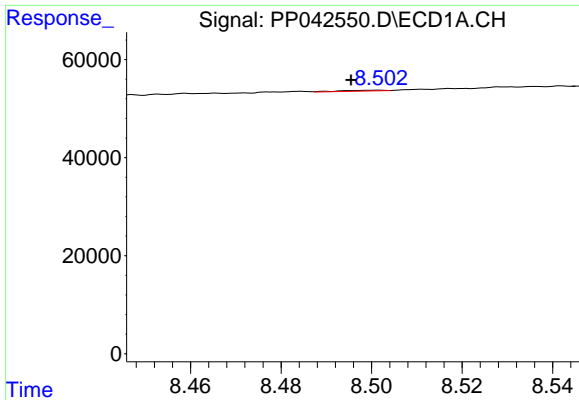
#35 AR-1260-5

R.T.: 9.052 min
 Delta R.T.: 0.008 min
 Response: 5746
 Conc: 4.76 ng/ml



#35 AR-1260-5

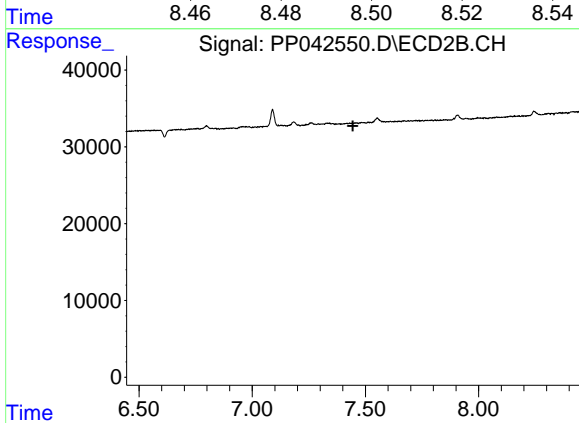
R.T.: 0.000 min
 Exp R.T. : 7.998 min
 Response: 0
 Conc: N.D.



#36 AR-1262-1

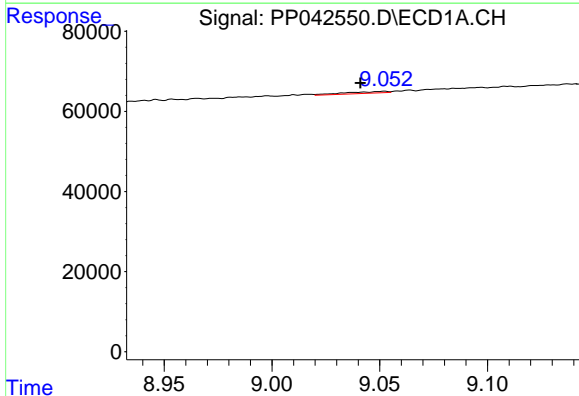
R.T.: 8.502 min
 Delta R.T.: 0.006 min
 Response: 1086
 Conc: 1.39 ng/ml

Instrument :
 ECD_P
 ClientSampleId :



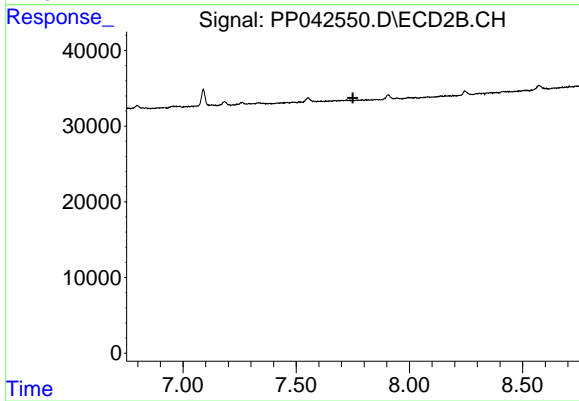
#36 AR-1262-1

R.T.: 0.000 min
 Exp R.T. : 7.444 min
 Response: 0
 Conc: N.D.



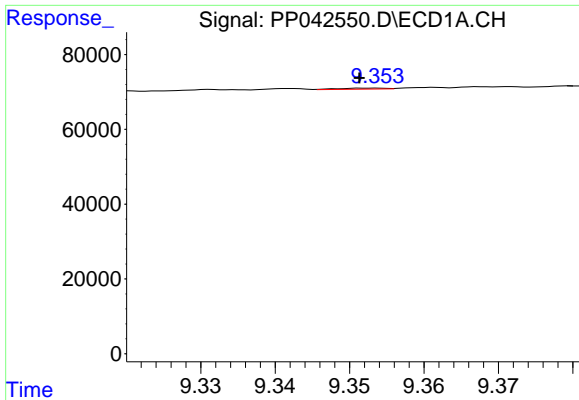
#37 AR-1262-2

R.T.: 9.052 min
 Delta R.T.: 0.011 min
 Response: 5746
 Conc: 4.30 ng/ml



#37 AR-1262-2

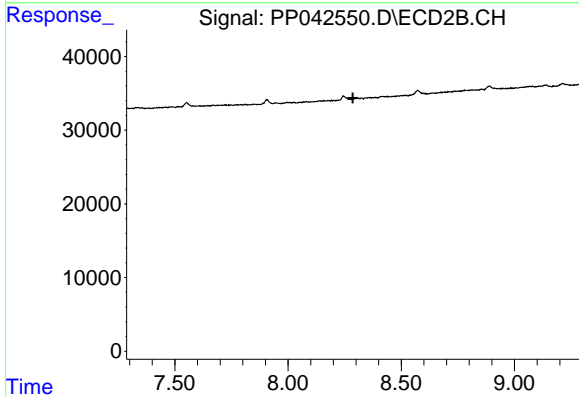
R.T.: 0.000 min
 Exp R.T. : 7.750 min
 Response: 0
 Conc: N.D.



#38 AR-1262-3

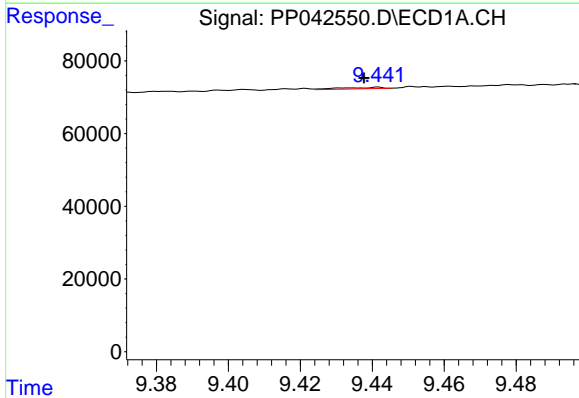
R.T.: 9.353 min
 Delta R.T.: 0.002 min
 Response: 1198
 Conc: 1.82 ng/ml

Instrument :
 ECD_P
 ClientSampleId :



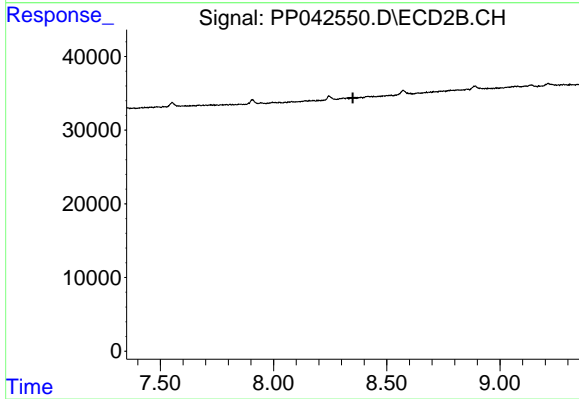
#38 AR-1262-3

R.T.: 0.000 min
 Exp R.T. : 8.286 min
 Response: 0
 Conc: N.D.



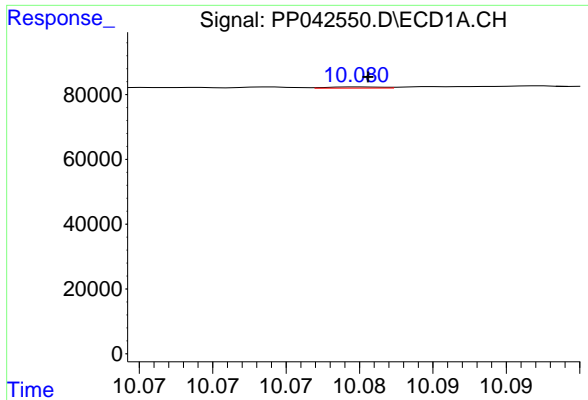
#39 AR-1262-4

R.T.: 9.442 min
 Delta R.T.: 0.004 min
 Response: 3203
 Conc: 6.63 ng/ml



#39 AR-1262-4

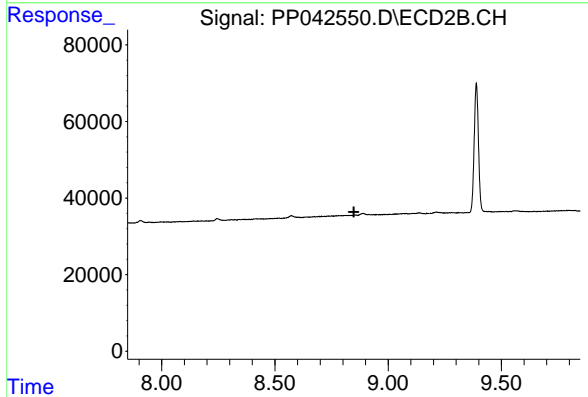
R.T.: 0.000 min
 Exp R.T. : 8.350 min
 Response: 0
 Conc: N.D.



#40 AR-1262-5

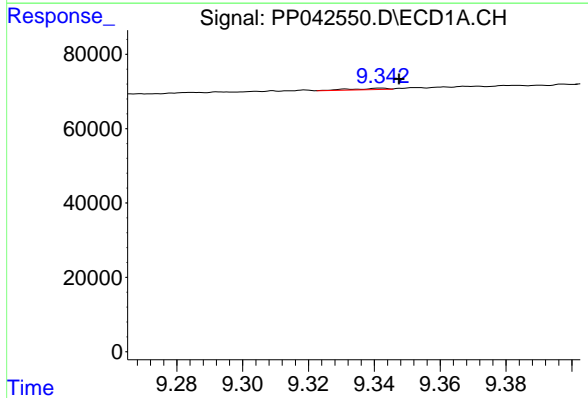
R.T.: 10.080 min
 Delta R.T.: 0.000 min
 Response: 896
 Conc: 1.84 ng/ml

Instrument :
 ECD_P
 ClientSampleId :



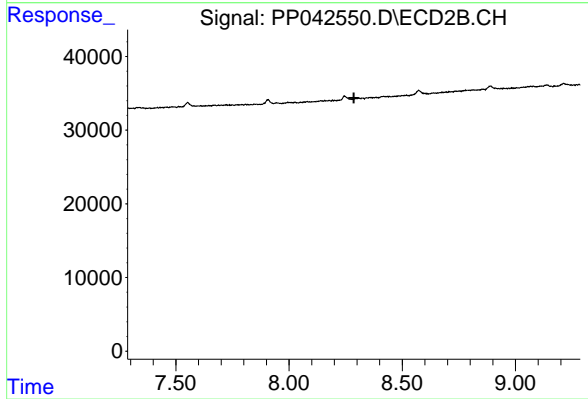
#40 AR-1262-5

R.T.: 0.000 min
 Exp R.T. : 8.849 min
 Response: 0
 Conc: N.D.



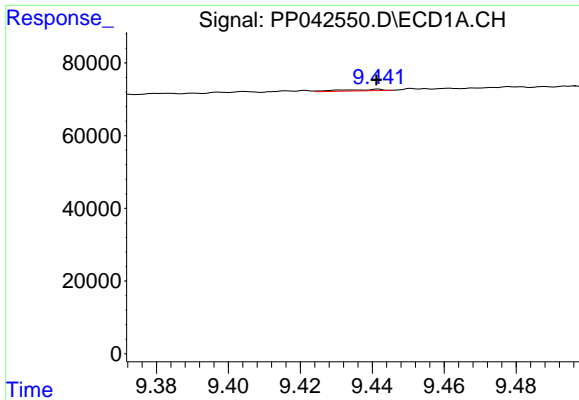
#41 AR-1268-1

R.T.: 9.342 min
 Delta R.T.: -0.006 min
 Response: 2463
 Conc: 1.51 ng/ml



#41 AR-1268-1

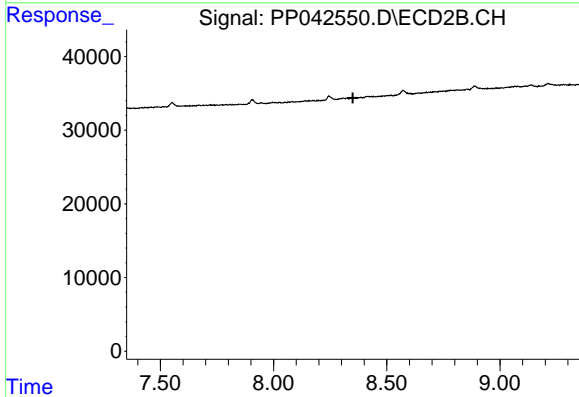
R.T.: 0.000 min
 Exp R.T. : 8.286 min
 Response: 0
 Conc: N.D.



#42 AR-1268-2

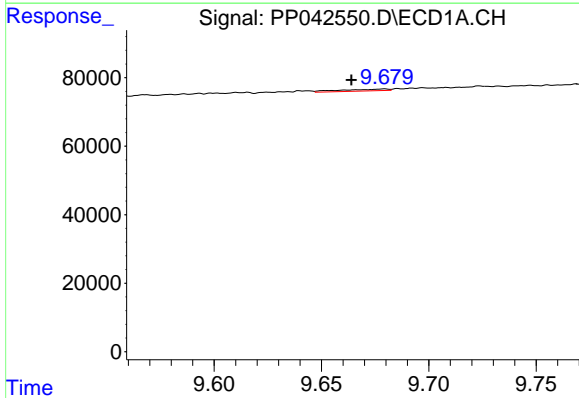
R.T.: 9.442 min
 Delta R.T.: 0.000 min
 Response: 3203
 Conc: 2.12 ng/ml

Instrument :
 ECD_P
 ClientSampleId :



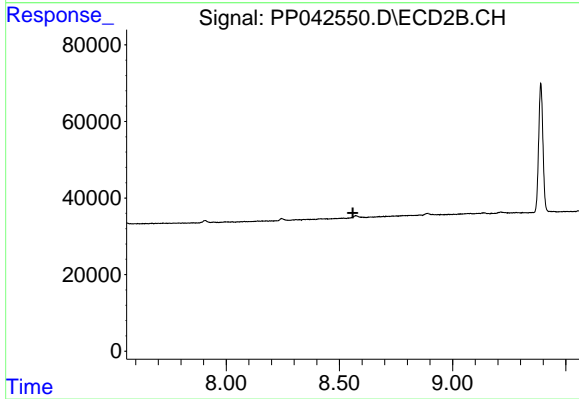
#42 AR-1268-2

R.T.: 0.000 min
 Exp R.T. : 8.351 min
 Response: 0
 Conc: N.D.



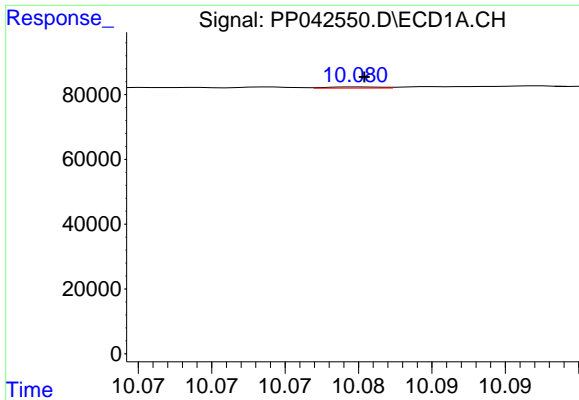
#43 AR-1268-3

R.T.: 9.680 min
 Delta R.T.: 0.016 min
 Response: 7905
 Conc: 5.87 ng/ml



#43 AR-1268-3

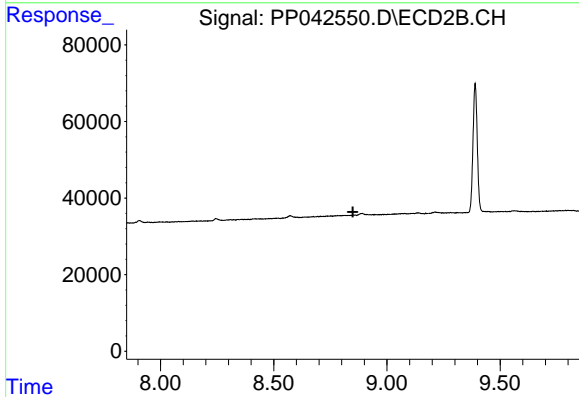
R.T.: 0.000 min
 Exp R.T. : 8.560 min
 Response: 0
 Conc: N.D.



#44 AR-1268-4

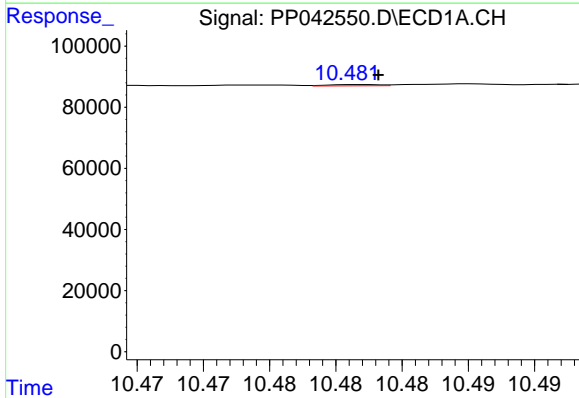
R.T.: 10.080 min
 Delta R.T.: 0.000 min
 Response: 896
 Conc: 1.64 ng/ml

Instrument :
 ECD_P
 ClientSampleId :



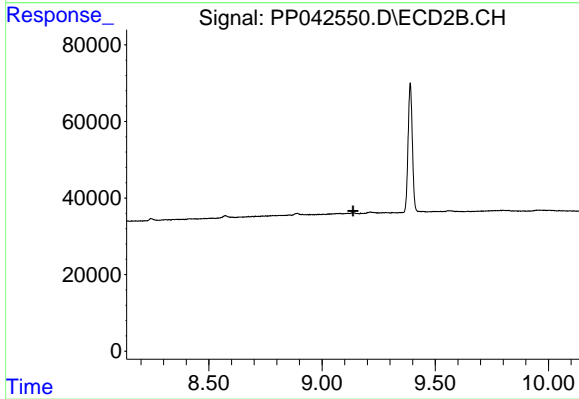
#44 AR-1268-4

R.T.: 0.000 min
 Exp R.T. : 8.849 min
 Response: 0
 Conc: N.D.



#45 AR-1268-5

R.T.: 10.482 min
 Delta R.T.: -0.001 min
 Response: 1087
 Conc: 0.24 ng/ml



#45 AR-1268-5

R.T.: 0.000 min
 Exp R.T. : 9.137 min
 Response: 0
 Conc: N.D.