

Data Path : Z:\pestpcbsrv\HPCHEM1\ECD\_P\Data\PP010522\  
 Data File : PP042556.D  
 Signal(s) : Signal #1: ECD1A.CH Signal #2: ECD2B.CH  
 Acq On : 05 Jan 2022 18:50  
 Operator : AJ\MA  
 Sample : N1005-02  
 Misc :  
 ALS Vial : 22 Sample Multiplier: 1

Instrument :  
 ECD\_P  
 ClientSampleId :

Integration File signal 1: autoint1.e  
 Integration File signal 2: autoint2.e  
 Quant Time: Jan 06 02:17:19 2022  
 Quant Method : Z:\pestpcbsrv\HPCHEM1\ECD\_P\methods\PP010422.M  
 Quant Title : GC EXTRACTABLES  
 QLast Update : Wed Jan 05 12:01:35 2022  
 Response via : Initial Calibration  
 Integrator: ChemStation 6890 Scale Mode: Small noise peaks clipped

Volume Inj. : 2 µl  
 Signal #1 Phase : ZB-MR1 Signal #2 Phase: ZB-MR2  
 Signal #1 Info : 30Mx0.32mmx 0.50µ Signal #2 Info : 30M x 0.32mm x 0.25µm

	Compound	RT#1	RT#2	Resp#1	Resp#2	ng/ml	ng/ml
System Monitoring Compounds							
1)	SA Tetrachlo...	4.882	4.048	336855	634462	17.388	24.237 #
2)	SA Decachlor...	10.821	9.392	281873	415171	24.027	21.125
Target Compounds							
3)	L1 AR-1016-1	6.172	5.341f	67960	242473	113.885	232.044 #
4)	L1 AR-1016-2	6.211	5.341	40712	242473	46.690	171.394 #
5)	L1 AR-1016-3	6.275	5.511f	22472	64227	42.199	78.803 #
6)	L1 AR-1016-4	6.366	5.557f	131355	390785	293.296	605.275 #
7)	L1 AR-1016-5	6.709f	5.799	93940	839000	217.479	1021.639 #
8)	L2 AR-1221-1	5.116	4.325f	588102	385219	2849.298	1113.762 #
9)	L2 AR-1221-2	5.221	4.423	664991	446027	4202.778	1660.947 #
10)	L2 AR-1221-3	5.316	4.521f	106592	633501	205.589	769.223 #
11)	L3 AR-1232-1	5.316	4.476f	106592	881282	252.457	1328.280 #
12)	L3 AR-1232-2	5.875f	5.341	344013	242473	1771.822	407.491 #
13)	L3 AR-1232-3	6.211	5.511f	40712	64227	114.230	196.491 #
14)	L3 AR-1232-4	6.366	5.617	131355	27584	741.100	93.659 #
15)	L3 AR-1232-5	6.490	5.799	14611	839000	117.661	2621.411 #
16)	L4 AR-1242-1	6.172	5.341f	67960	242473	147.349	292.715 #
17)	L4 AR-1242-2	6.211	5.341	40712	242473	60.976	216.742 #
18)	L4 AR-1242-3	6.275	5.511f	22472	64227	56.374	99.315 #
19)	L4 AR-1242-4	6.366	5.617	131355	27584	393.390	44.020 #
20)	L4 AR-1242-5	7.158	0.000	7422	0	22.520	N.D. #
21)	L5 AR-1248-1	6.172	5.341f	67960	242473	200.816	398.485 #
22)	L5 AR-1248-2	6.490	5.557f	14611	390785	31.691	458.982 #
23)	L5 AR-1248-3	6.709f	5.617	93940	27584	165.104	30.533 #
24)	L5 AR-1248-4	0.000	5.799	0	839000	N.D.	801.513 #
25)	L5 AR-1248-5	7.158	0.000	7422	0	13.546	N.D. #
26)	L6 AR-1254-1	7.063f	0.000	10739	0	17.628	N.D. #
27)	L6 AR-1254-2	7.341f	0.000	10435	0	11.363	N.D. #
28)	L6 AR-1254-3	7.699	0.000	10188	0	11.122	N.D. #
29)	L6 AR-1254-4	0.000	7.035f	0	17168	N.D.	14.028 #
31)	L7 AR-1260-1	0.000	6.914	0	17526	N.D.	13.470 #
32)	L7 AR-1260-2	0.000	7.090f	0	13271	N.D.	8.730 #
34)	L7 AR-1260-4	8.722	0.000	8526	0	12.923	N.D. #
35)	L7 AR-1260-5	9.022f	0.000	7302	0	6.054	N.D. #
37)	L8 AR-1262-2	9.022f	0.000	7302	0	5.461	N.D. #
39)	L8 AR-1262-4	9.448	0.000	7020	0	14.526	N.D. #
40)	L8 AR-1262-5	10.087	0.000	4296	0	8.805	N.D. #
42)	L9 AR-1268-2	9.448	0.000	7020	0	4.641	N.D. #
43)	L9 AR-1268-3	9.688f	0.000	13522	0	10.047	N.D. #
44)	L9 AR-1268-4	10.087	0.000	4296	0	7.848	N.D. #
45)	L9 AR-1268-5	10.494	0.000	9279	0	2.079	N.D. #

Data Path : Z:\pestpcbsrv\HPCHEM1\ECD\_P\Data\PP010522\  
Data File : PP042556.D  
Signal(s) : Signal #1: ECD1A.CH Signal #2: ECD2B.CH  
Acq On : 05 Jan 2022 18:50  
Operator : AJ\MA  
Sample : N1005-02  
Misc :  
ALS Vial : 22 Sample Multiplier: 1

Instrument :  
ECD\_P  
ClientSampleId :

Integration File signal 1: autoint1.e  
Integration File signal 2: autoint2.e  
Quant Time: Jan 06 02:17:19 2022  
Quant Method : Z:\pestpcbsrv\HPCHEM1\ECD\_P\methods\PP010422.M  
Quant Title : GC EXTRACTABLES  
QLast Update : Wed Jan 05 12:01:35 2022  
Response via : Initial Calibration  
Integrator: ChemStation 6890 Scale Mode: Small noise peaks clipped

Volume Inj. : 2 µl  
Signal #1 Phase : ZB-MR1 Signal #2 Phase: ZB-MR2  
Signal #1 Info : 30Mx0.32mmx 0.50µ Signal #2 Info : 30M x 0.32mm x 0.25µm

Compound	RT#1	RT#2	Resp#1	Resp#2	ng/ml	ng/ml
----------	------	------	--------	--------	-------	-------

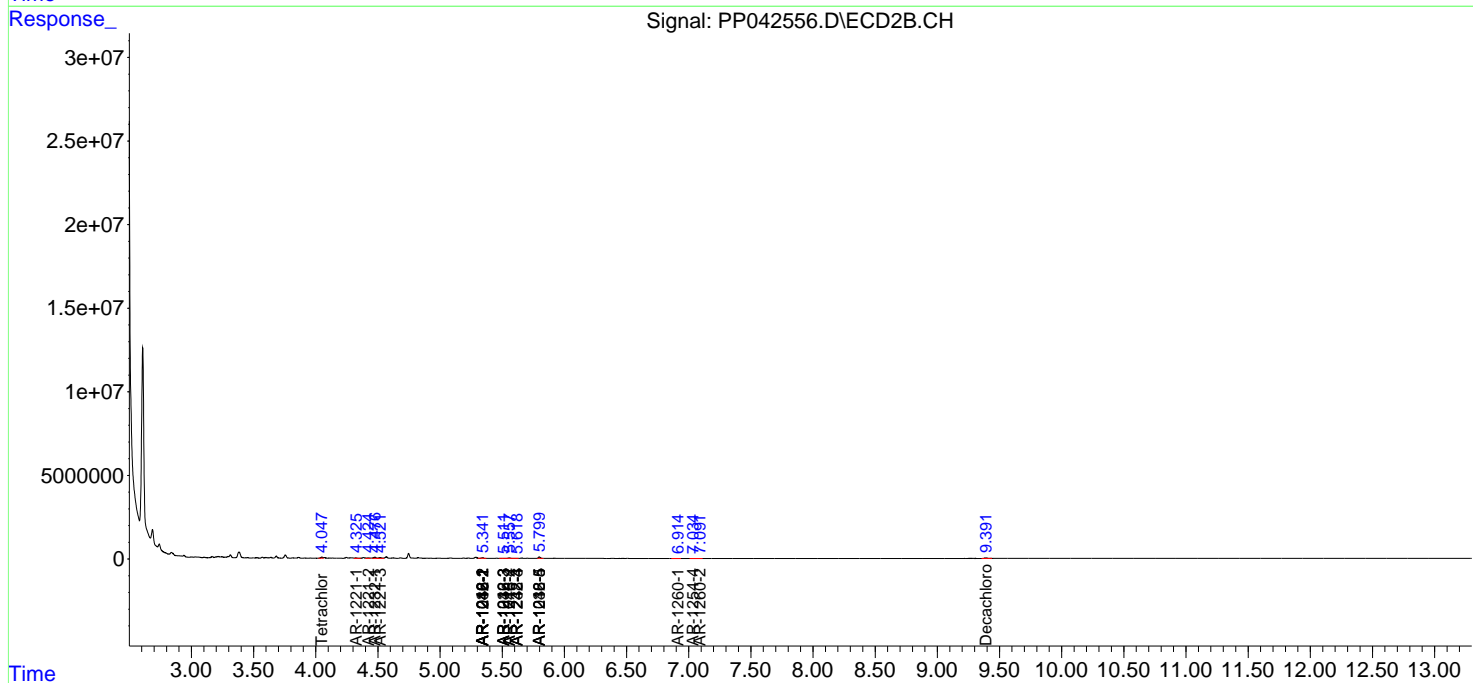
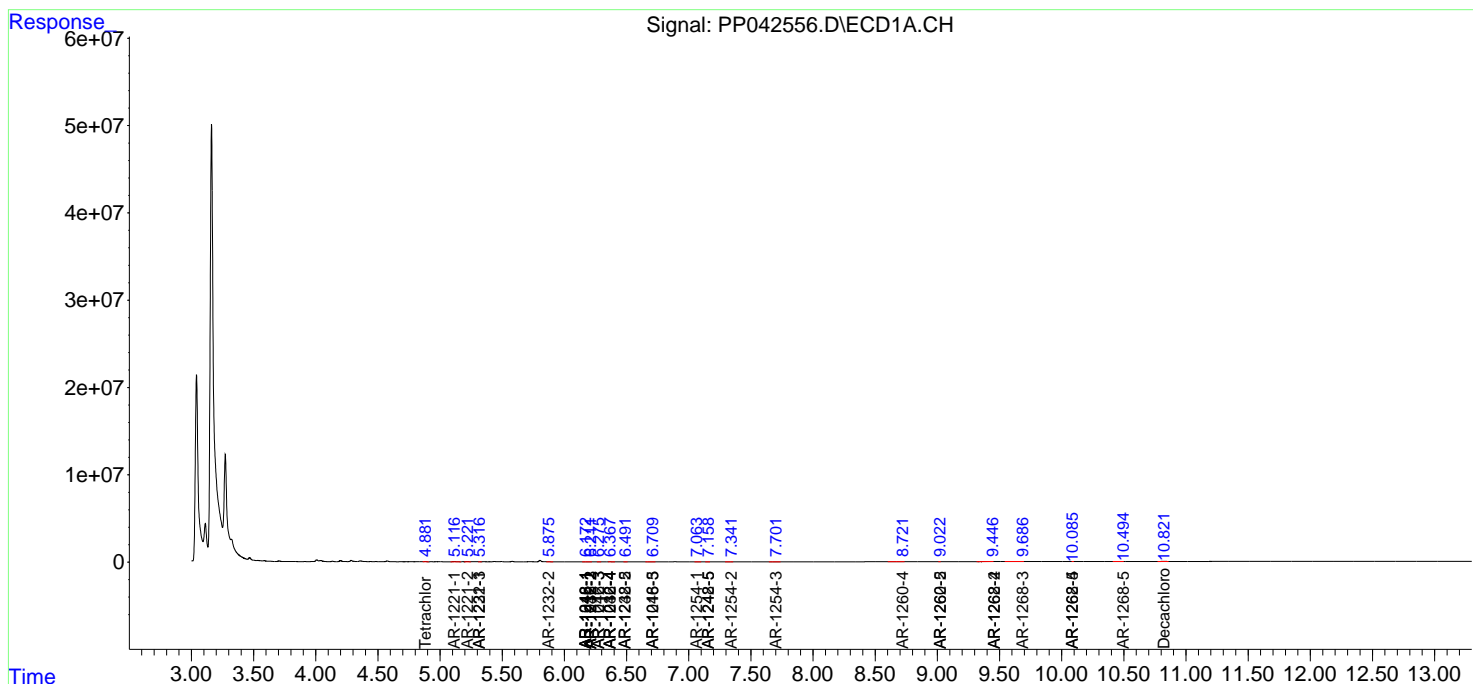
(f)=RT Delta > 1/2 Window (#)=Amounts differ by > 25% (m)=manual int.

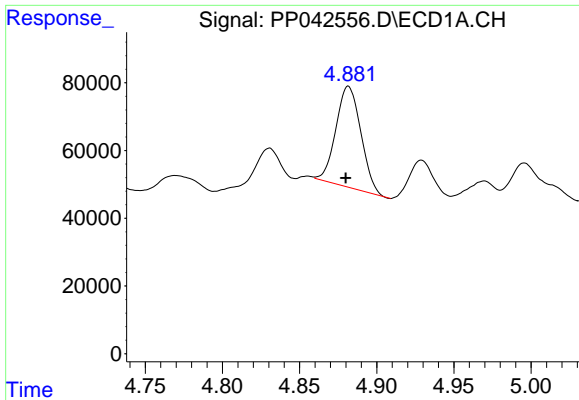
Data Path : Z:\pestpcbsrv\HPCHEM1\ECD\_P\Data\PP010522\  
 Data File : PP042556.D  
 Signal(s) : Signal #1: ECD1A.CH Signal #2: ECD2B.CH  
 Acq On : 05 Jan 2022 18:50  
 Operator : AJ\MA  
 Sample : N1005-02  
 Misc :  
 ALS Vial : 22 Sample Multiplier: 1

Instrument :  
 ECD\_P  
 ClientSampleId :

Integration File signal 1: autoint1.e  
 Integration File signal 2: autoint2.e  
 Quant Time: Jan 06 02:17:19 2022  
 Quant Method : Z:\pestpcbsrv\HPCHEM1\ECD\_P\methods\PP010422.M  
 Quant Title : GC EXTRACTABLES  
 QLast Update : Wed Jan 05 12:01:35 2022  
 Response via : Initial Calibration  
 Integrator: ChemStation 6890 Scale Mode: Small noise peaks clipped

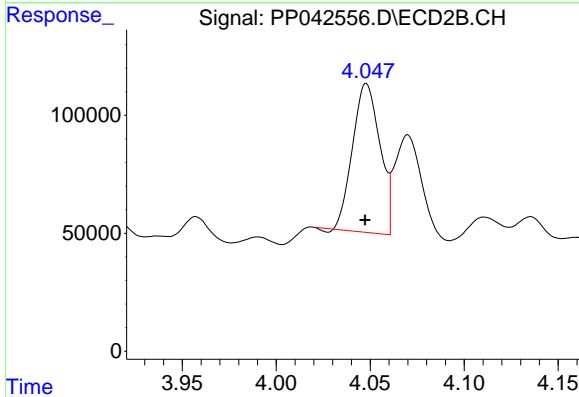
Volume Inj. : 2 µl  
 Signal #1 Phase : ZB-MR1 Signal #2 Phase: ZB-MR2  
 Signal #1 Info : 30Mx0.32mmx 0.50µ Signal #2 Info : 30M x 0.32mm x 0.25µm



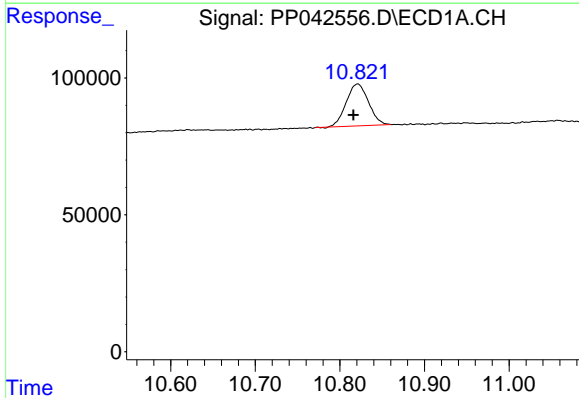


#1 Tetrachloro-m-xylene  
 R.T.: 4.882 min  
 Delta R.T.: 0.002 min  
 Response: 336855  
 Conc: 17.39 ng/ml

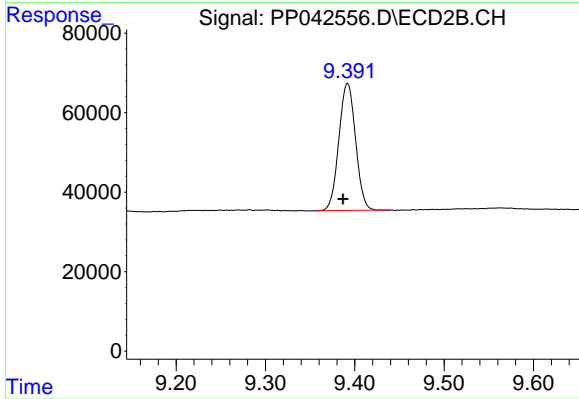
Instrument :  
 ECD\_P  
 ClientSampleId :



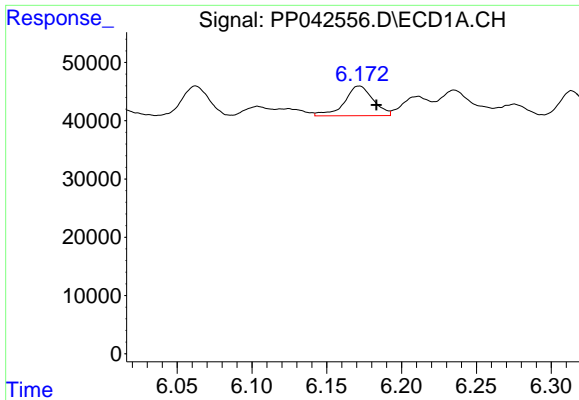
#1 Tetrachloro-m-xylene  
 R.T.: 4.048 min  
 Delta R.T.: 0.000 min  
 Response: 634462  
 Conc: 24.24 ng/ml



#2 Decachlorobiphenyl  
 R.T.: 10.821 min  
 Delta R.T.: 0.005 min  
 Response: 281873  
 Conc: 24.03 ng/ml



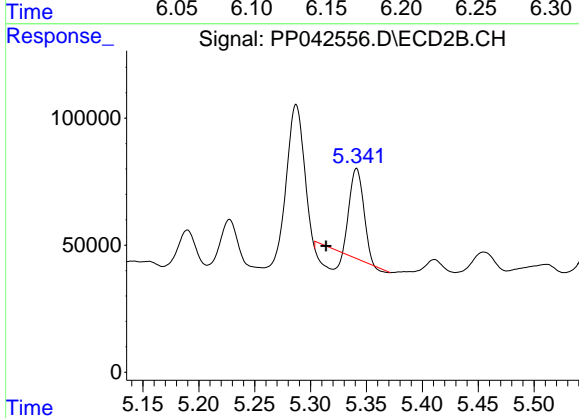
#2 Decachlorobiphenyl  
 R.T.: 9.392 min  
 Delta R.T.: 0.005 min  
 Response: 415171  
 Conc: 21.13 ng/ml



#3 AR-1016-1

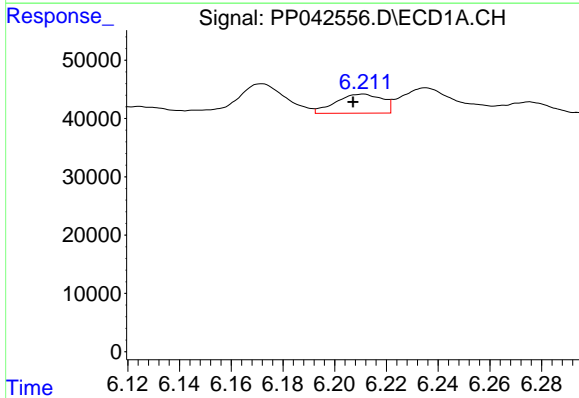
R.T.: 6.172 min  
 Delta R.T.: -0.011 min  
 Response: 67960  
 Conc: 113.88 ng/ml

Instrument :  
 ECD\_P  
 ClientSampleId :



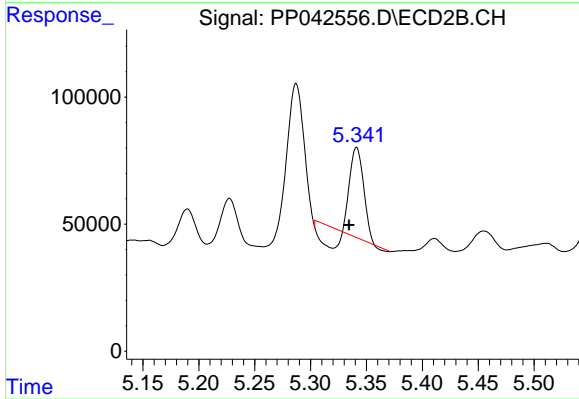
#3 AR-1016-1

R.T.: 5.341 min  
 Delta R.T.: 0.027 min  
 Response: 242473  
 Conc: 232.04 ng/ml



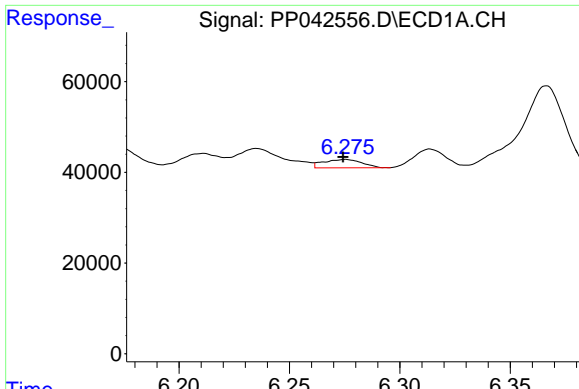
#4 AR-1016-2

R.T.: 6.211 min  
 Delta R.T.: 0.004 min  
 Response: 40712  
 Conc: 46.69 ng/ml



#4 AR-1016-2

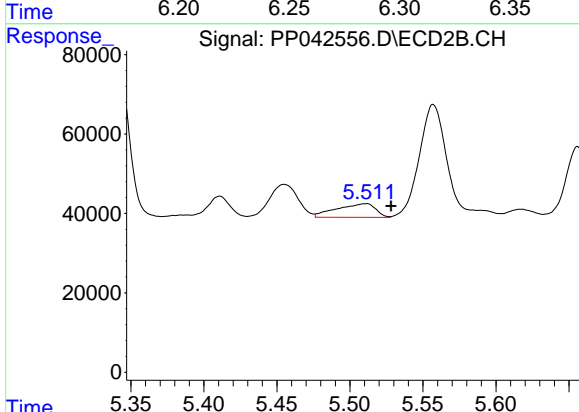
R.T.: 5.341 min  
 Delta R.T.: 0.007 min  
 Response: 242473  
 Conc: 171.39 ng/ml



#5 AR-1016-3

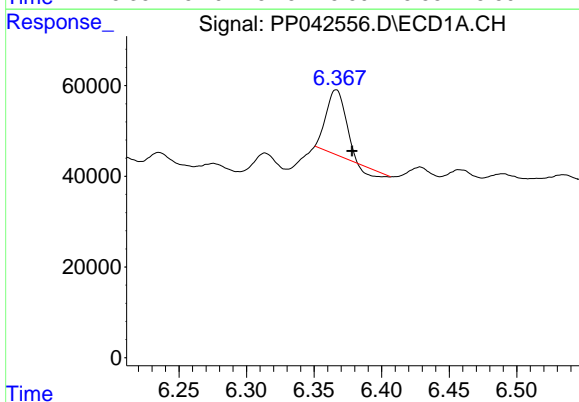
R.T.: 6.275 min  
 Delta R.T.: 0.001 min  
 Response: 22472  
 Conc: 42.20 ng/ml

Instrument :  
 ECD\_P  
 ClientSampleId :



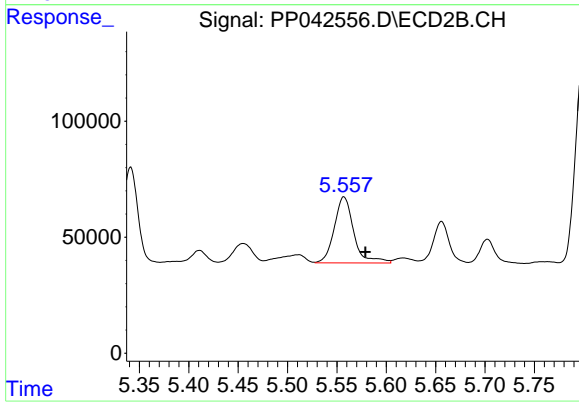
#5 AR-1016-3

R.T.: 5.511 min  
 Delta R.T.: -0.017 min  
 Response: 64227  
 Conc: 78.80 ng/ml



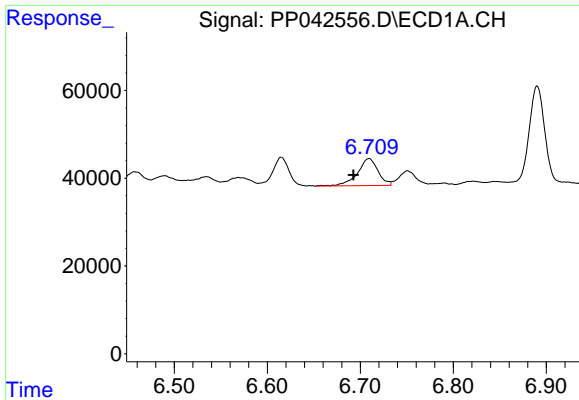
#6 AR-1016-4

R.T.: 6.366 min  
 Delta R.T.: -0.012 min  
 Response: 131355  
 Conc: 293.30 ng/ml



#6 AR-1016-4

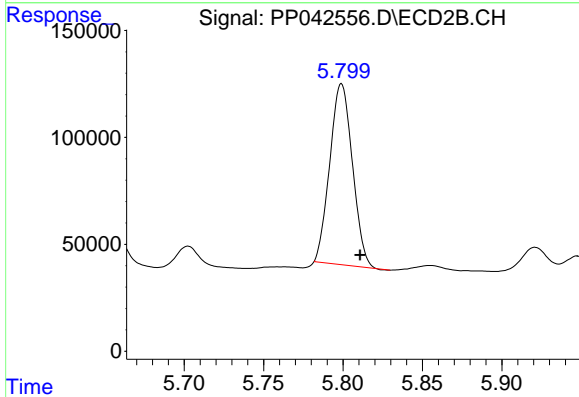
R.T.: 5.557 min  
 Delta R.T.: -0.022 min  
 Response: 390785  
 Conc: 605.28 ng/ml



#7 AR-1016-5

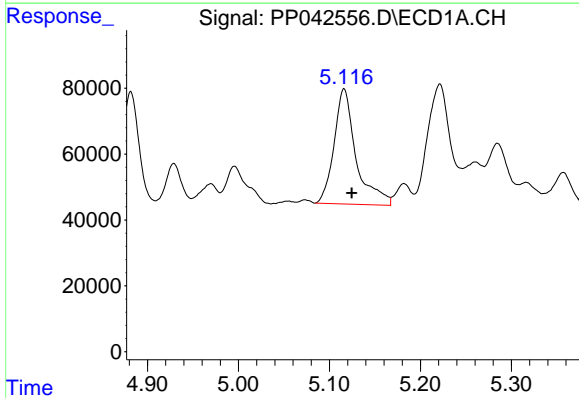
R.T.: 6.709 min  
 Delta R.T.: 0.017 min  
 Response: 93940  
 Conc: 217.48 ng/ml

Instrument :  
 ECD\_P  
 ClientSampleId :



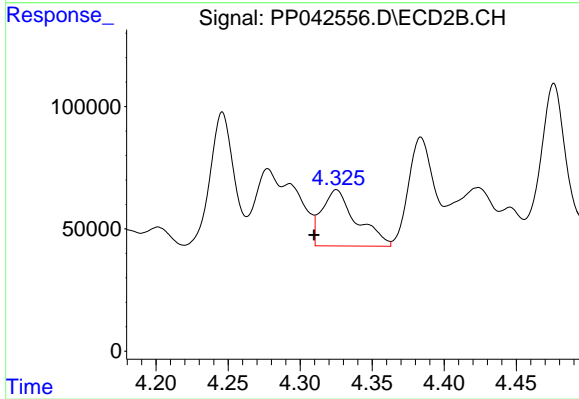
#7 AR-1016-5

R.T.: 5.799 min  
 Delta R.T.: -0.012 min  
 Response: 839000  
 Conc: 1021.64 ng/ml



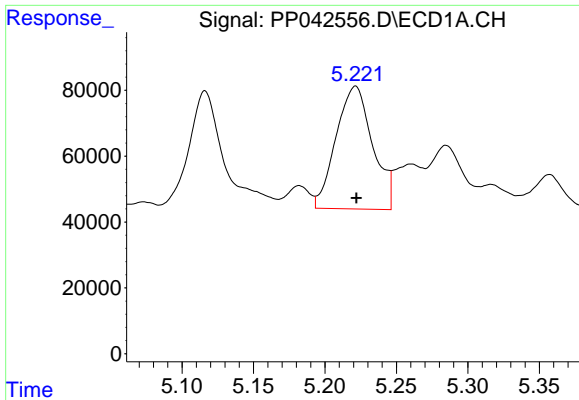
#8 AR-1221-1

R.T.: 5.116 min  
 Delta R.T.: -0.008 min  
 Response: 588102  
 Conc: 2849.30 ng/ml



#8 AR-1221-1

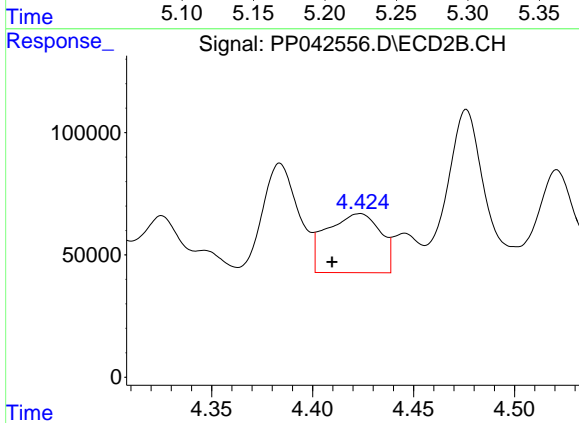
R.T.: 4.325 min  
 Delta R.T.: 0.016 min  
 Response: 385219  
 Conc: 1113.76 ng/ml



#9 AR-1221-2

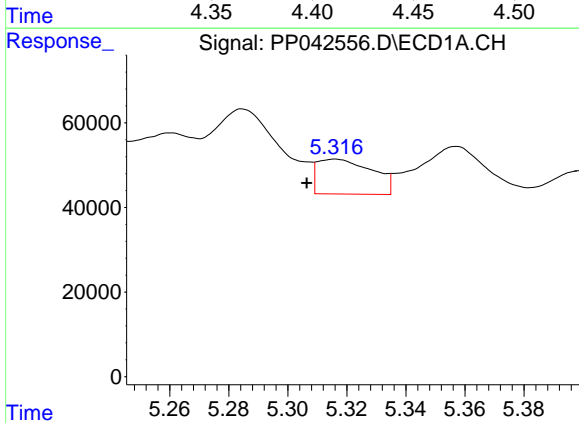
R.T.: 5.221 min  
 Delta R.T.: 0.000 min  
 Response: 664991  
 Conc: 4202.78 ng/ml

Instrument :  
 ECD\_P  
 ClientSampleId :



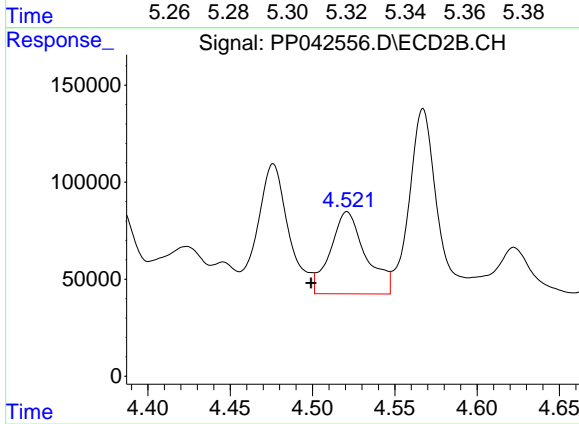
#9 AR-1221-2

R.T.: 4.423 min  
 Delta R.T.: 0.014 min  
 Response: 446027  
 Conc: 1660.95 ng/ml



#10 AR-1221-3

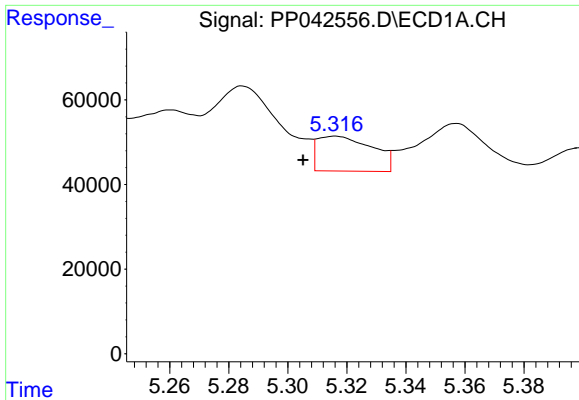
R.T.: 5.316 min  
 Delta R.T.: 0.010 min  
 Response: 106592  
 Conc: 205.59 ng/ml



#10 AR-1221-3

R.T.: 4.521 min  
 Delta R.T.: 0.022 min  
 Response: 633501  
 Conc: 769.22 ng/ml

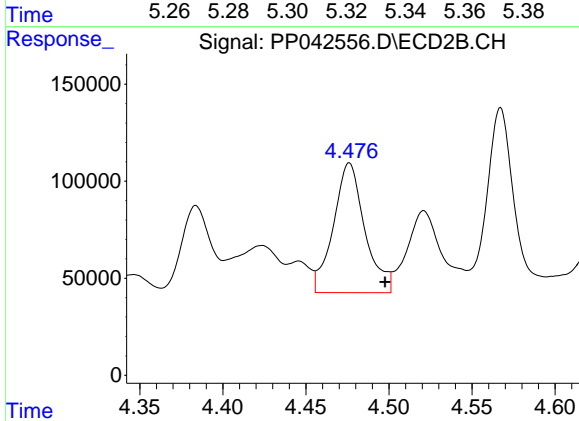




#11 AR-1232-1

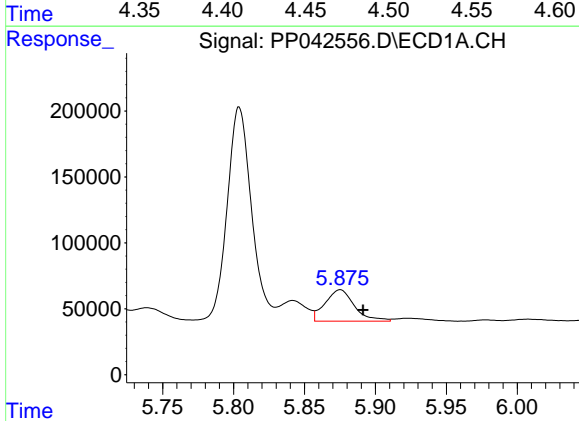
R.T.: 5.316 min  
 Delta R.T.: 0.011 min  
 Response: 106592  
 Conc: 252.46 ng/ml

Instrument :  
 ECD\_P  
 ClientSampleId :



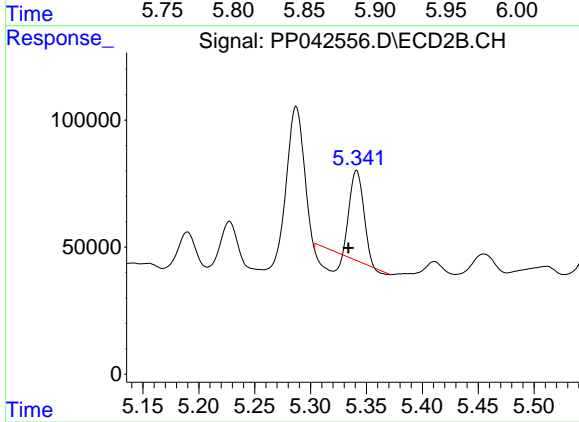
#11 AR-1232-1

R.T.: 4.476 min  
 Delta R.T.: -0.022 min  
 Response: 881282  
 Conc: 1328.28 ng/ml



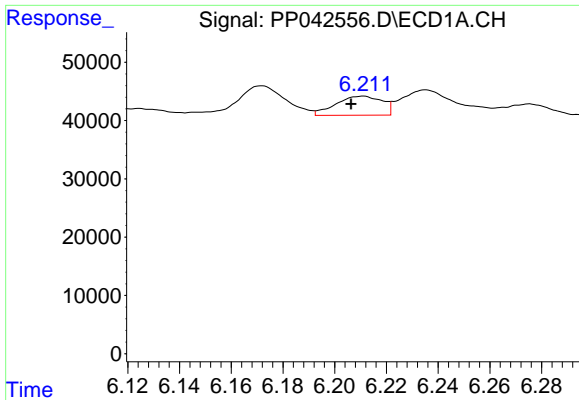
#12 AR-1232-2

R.T.: 5.875 min  
 Delta R.T.: -0.016 min  
 Response: 344013  
 Conc: 1771.82 ng/ml



#12 AR-1232-2

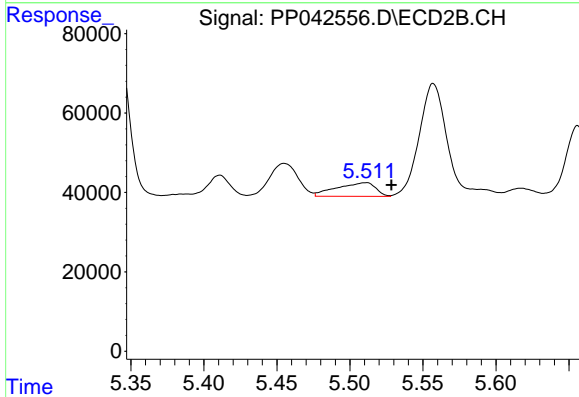
R.T.: 5.341 min  
 Delta R.T.: 0.007 min  
 Response: 242473  
 Conc: 407.49 ng/ml



#13 AR-1232-3

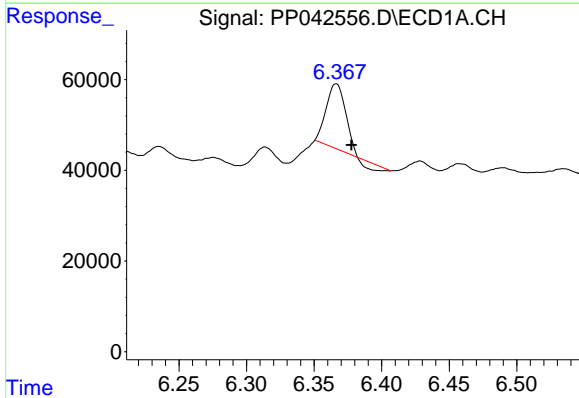
R.T.: 6.211 min  
 Delta R.T.: 0.004 min  
 Response: 40712  
 Conc: 114.23 ng/ml

Instrument :  
 ECD\_P  
 ClientSampleId :



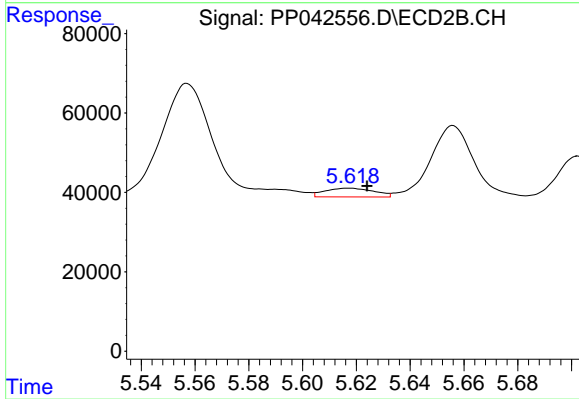
#13 AR-1232-3

R.T.: 5.511 min  
 Delta R.T.: -0.017 min  
 Response: 64227  
 Conc: 196.49 ng/ml



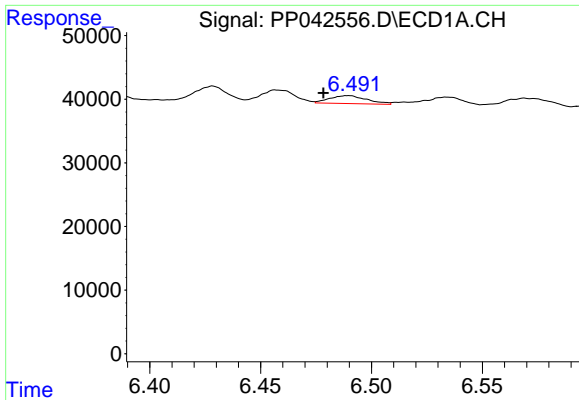
#14 AR-1232-4

R.T.: 6.366 min  
 Delta R.T.: -0.011 min  
 Response: 131355  
 Conc: 741.10 ng/ml



#14 AR-1232-4

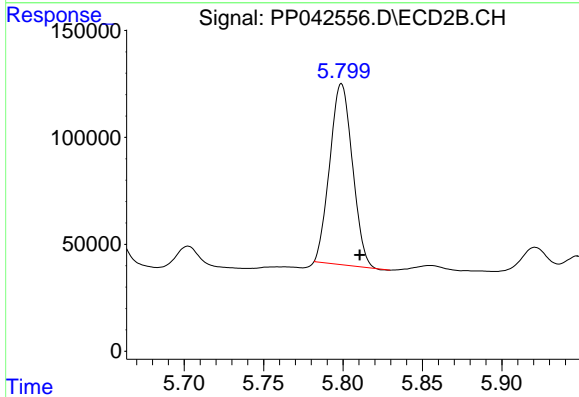
R.T.: 5.617 min  
 Delta R.T.: -0.007 min  
 Response: 27584  
 Conc: 93.66 ng/ml



#15 AR-1232-5

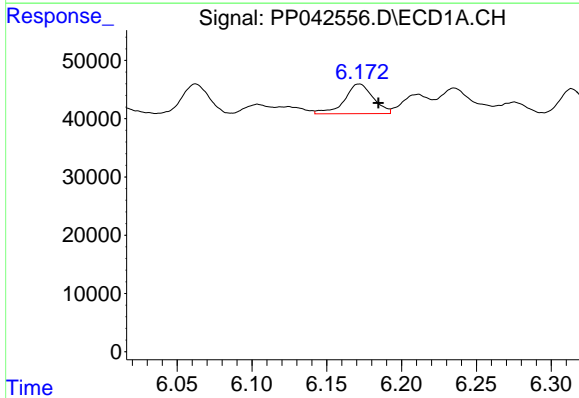
R.T.: 6.490 min  
 Delta R.T.: 0.011 min  
 Response: 14611  
 Conc: 117.66 ng/ml

Instrument :  
 ECD\_P  
 ClientSampleId :



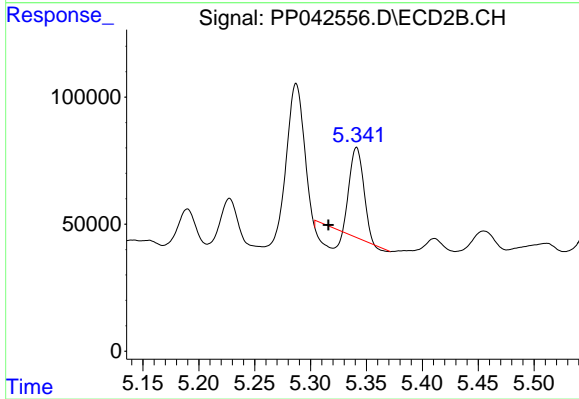
#15 AR-1232-5

R.T.: 5.799 min  
 Delta R.T.: -0.011 min  
 Response: 839000  
 Conc: 2621.41 ng/ml



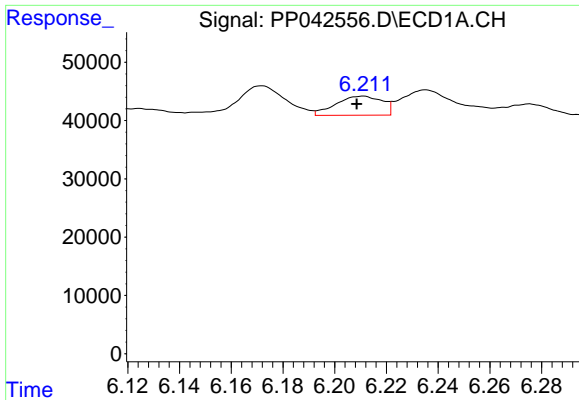
#16 AR-1242-1

R.T.: 6.172 min  
 Delta R.T.: -0.013 min  
 Response: 67960  
 Conc: 147.35 ng/ml



#16 AR-1242-1

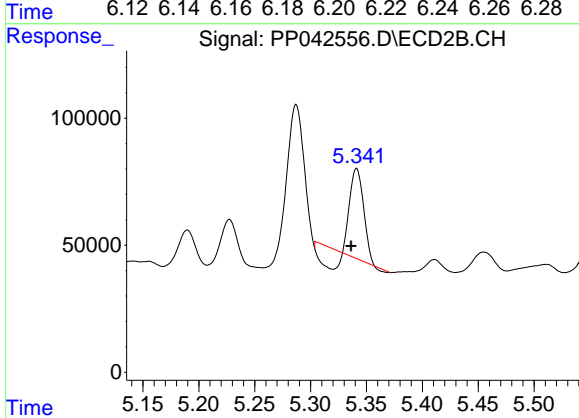
R.T.: 5.341 min  
 Delta R.T.: 0.025 min  
 Response: 242473  
 Conc: 292.71 ng/ml



#17 AR-1242-2

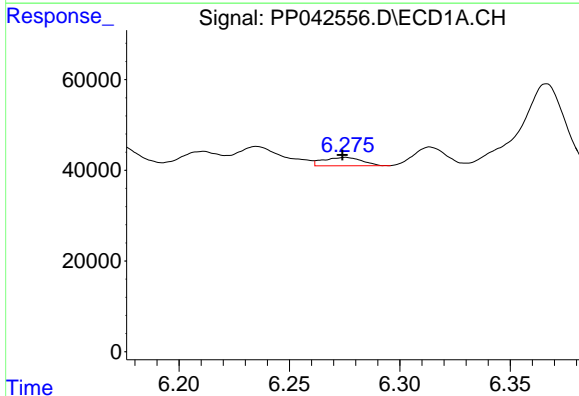
R.T.: 6.211 min  
 Delta R.T.: 0.002 min  
 Response: 40712  
 Conc: 60.98 ng/ml

Instrument :  
 ECD\_P  
 ClientSampleId :



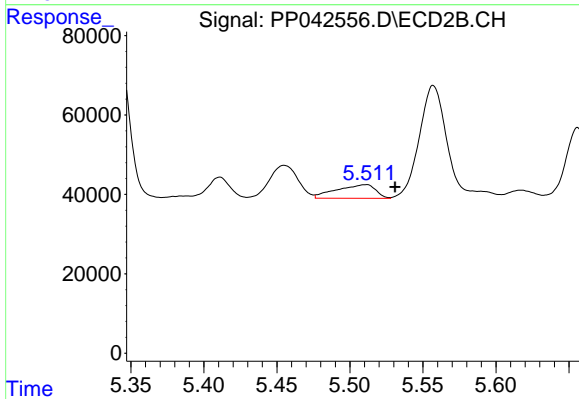
#17 AR-1242-2

R.T.: 5.341 min  
 Delta R.T.: 0.005 min  
 Response: 242473  
 Conc: 216.74 ng/ml



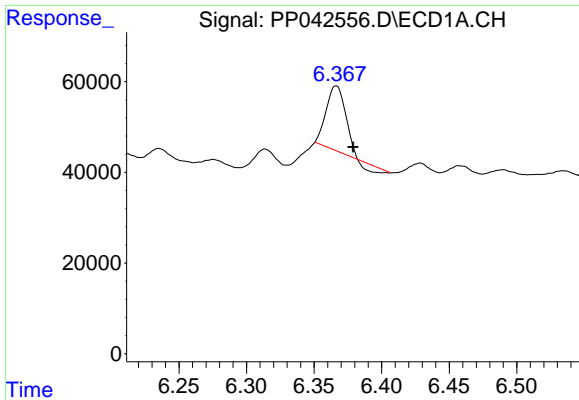
#18 AR-1242-3

R.T.: 6.275 min  
 Delta R.T.: 0.001 min  
 Response: 22472  
 Conc: 56.37 ng/ml



#18 AR-1242-3

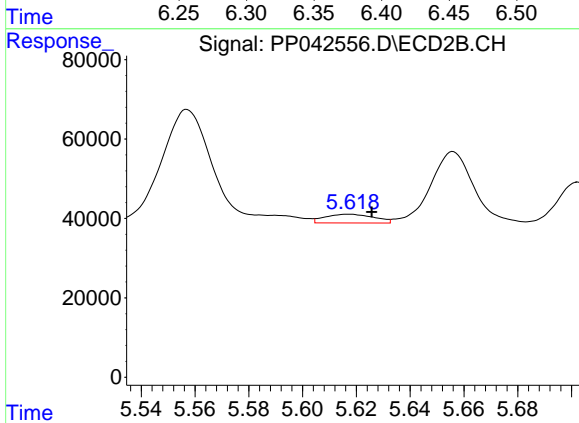
R.T.: 5.511 min  
 Delta R.T.: -0.020 min  
 Response: 64227  
 Conc: 99.32 ng/ml



#19 AR-1242-4

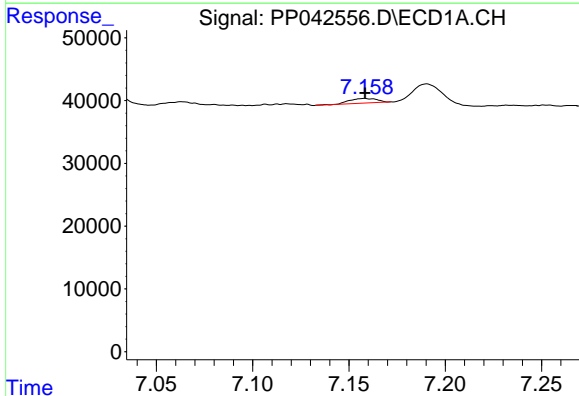
R.T.: 6.366 min  
 Delta R.T.: -0.012 min  
 Response: 131355  
 Conc: 393.39 ng/ml

Instrument :  
 ECD\_P  
 ClientSampleId :



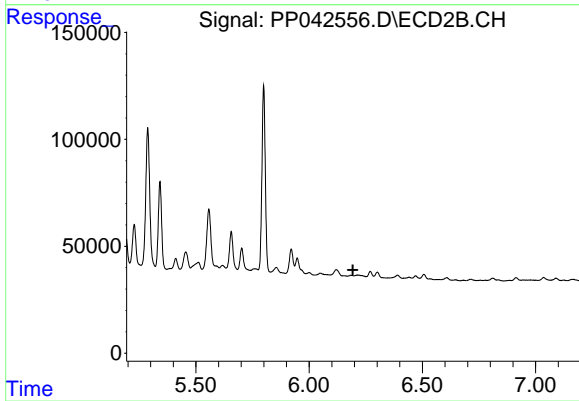
#19 AR-1242-4

R.T.: 5.617 min  
 Delta R.T.: -0.008 min  
 Response: 27584  
 Conc: 44.02 ng/ml



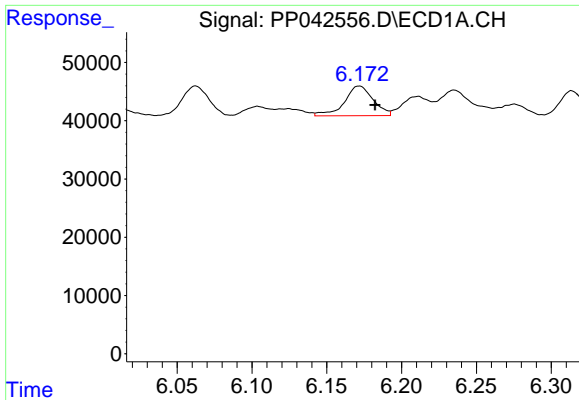
#20 AR-1242-5

R.T.: 7.158 min  
 Delta R.T.: 0.000 min  
 Response: 7422  
 Conc: 22.52 ng/ml



#20 AR-1242-5

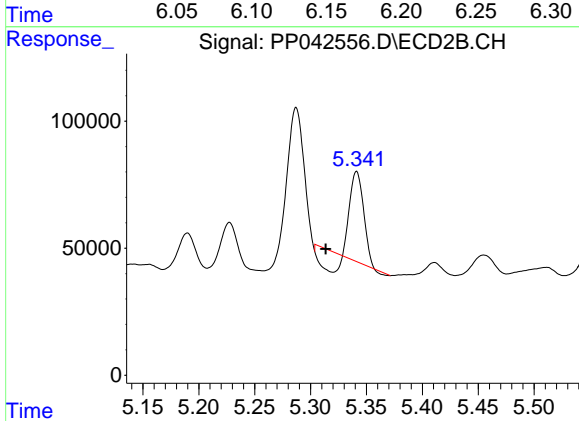
R.T.: 0.000 min  
 Exp R.T. : 6.193 min  
 Response: 0  
 Conc: N.D.



#21 AR-1248-1

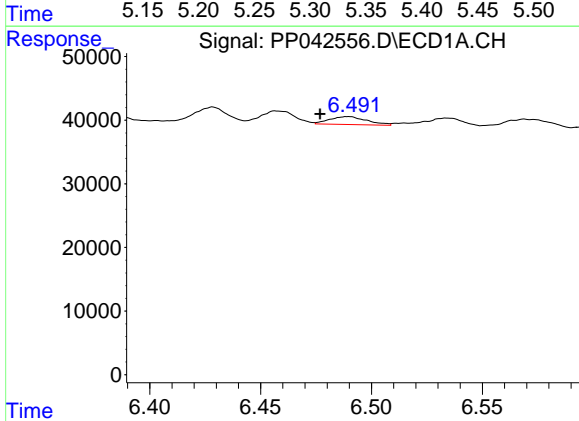
R.T.: 6.172 min  
 Delta R.T.: -0.011 min  
 Response: 67960  
 Conc: 200.82 ng/ml

Instrument :  
 ECD\_P  
 ClientSampleId :



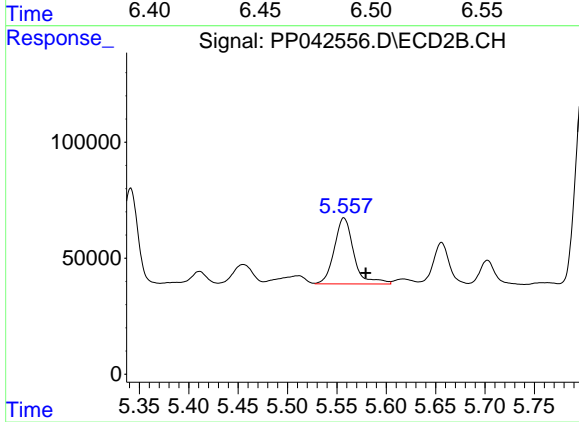
#21 AR-1248-1

R.T.: 5.341 min  
 Delta R.T.: 0.028 min  
 Response: 242473  
 Conc: 398.48 ng/ml



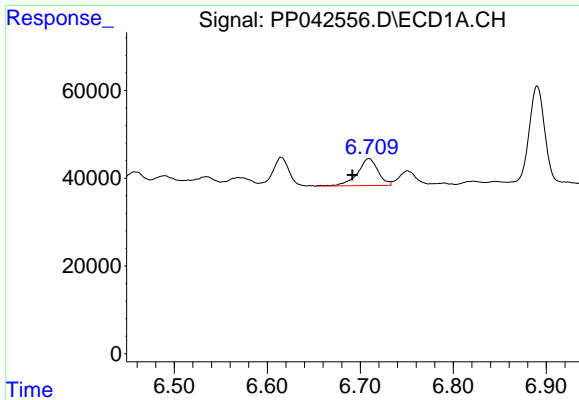
#22 AR-1248-2

R.T.: 6.490 min  
 Delta R.T.: 0.013 min  
 Response: 14611  
 Conc: 31.69 ng/ml



#22 AR-1248-2

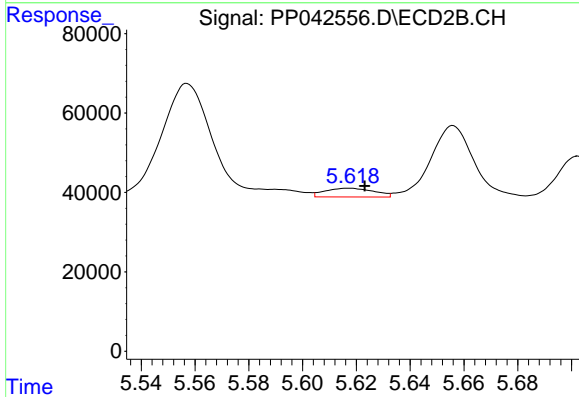
R.T.: 5.557 min  
 Delta R.T.: -0.022 min  
 Response: 390785  
 Conc: 458.98 ng/ml



#23 AR-1248-3

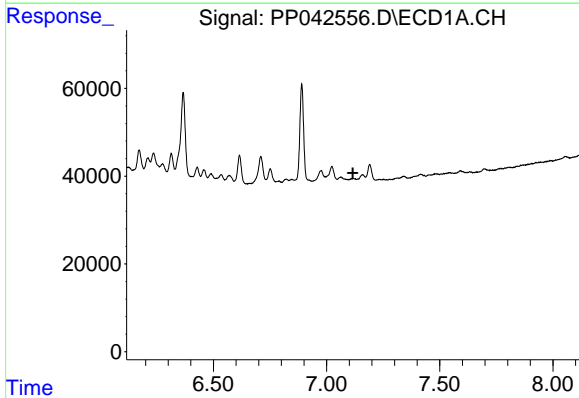
R.T.: 6.709 min  
 Delta R.T.: 0.018 min  
 Response: 93940  
 Conc: 165.10 ng/ml

Instrument :  
 ECD\_P  
 ClientSampleId :



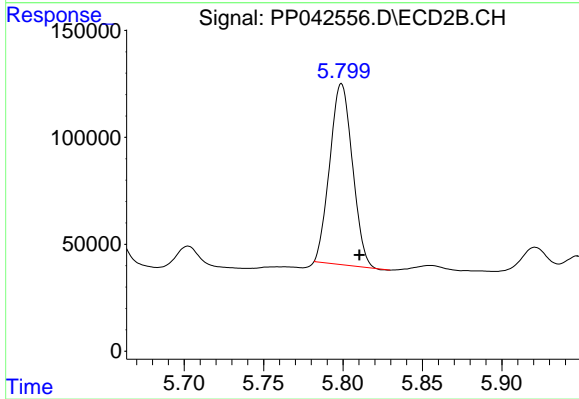
#23 AR-1248-3

R.T.: 5.617 min  
 Delta R.T.: -0.006 min  
 Response: 27584  
 Conc: 30.53 ng/ml



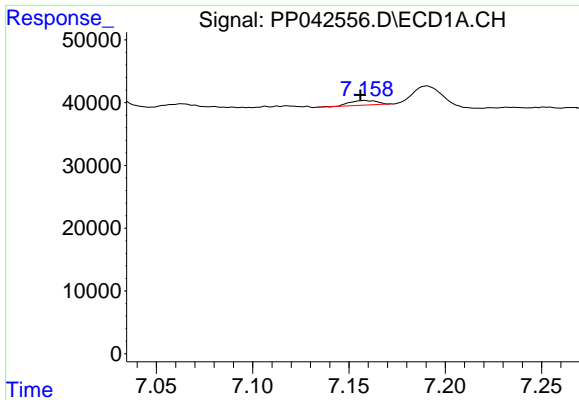
#24 AR-1248-4

R.T.: 0.000 min  
 Exp R.T. : 7.116 min  
 Response: 0  
 Conc: N.D.



#24 AR-1248-4

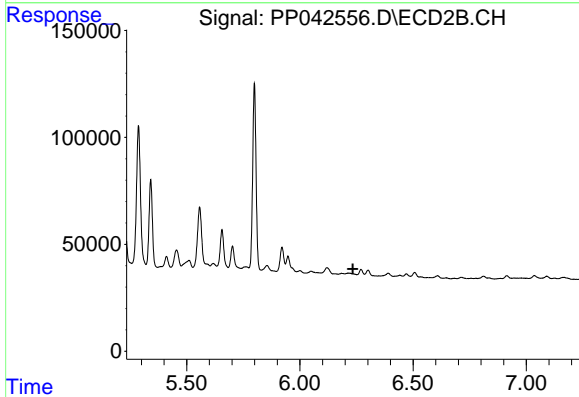
R.T.: 5.799 min  
 Delta R.T.: -0.011 min  
 Response: 839000  
 Conc: 801.51 ng/ml



#25 AR-1248-5

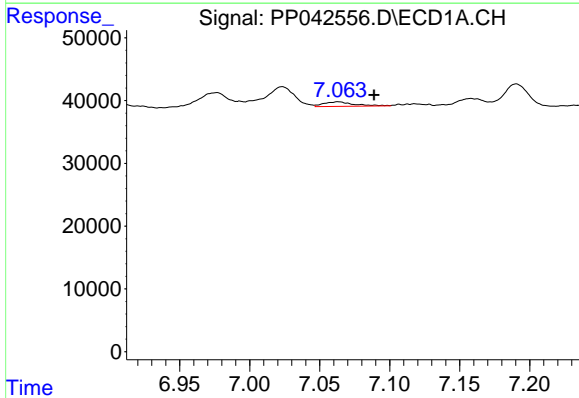
R.T.: 7.158 min  
 Delta R.T.: 0.002 min  
 Response: 7422  
 Conc: 13.55 ng/ml

Instrument :  
 ECD\_P  
 ClientSampleId :



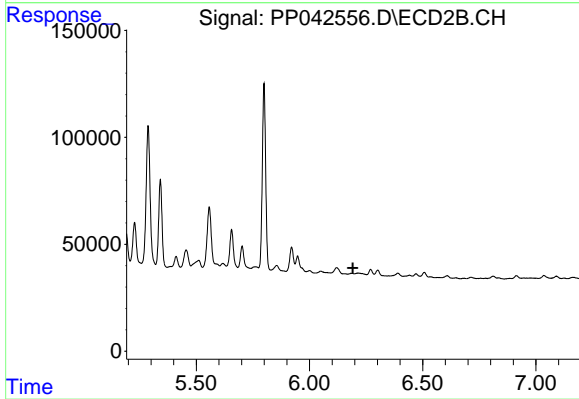
#25 AR-1248-5

R.T.: 0.000 min  
 Exp R.T. : 6.234 min  
 Response: 0  
 Conc: N.D.



#26 AR-1254-1

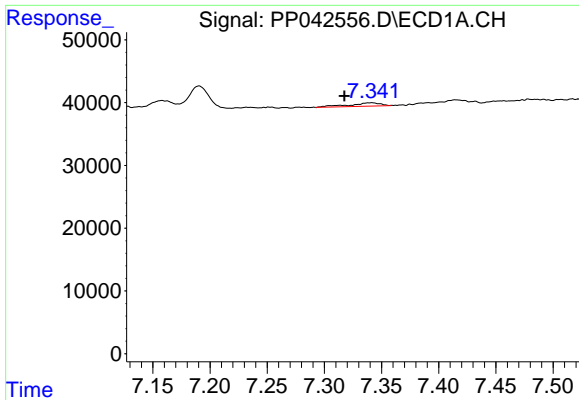
R.T.: 7.063 min  
 Delta R.T.: -0.025 min  
 Response: 10739  
 Conc: 17.63 ng/ml



#26 AR-1254-1

R.T.: 0.000 min  
 Exp R.T. : 6.191 min  
 Response: 0  
 Conc: N.D.

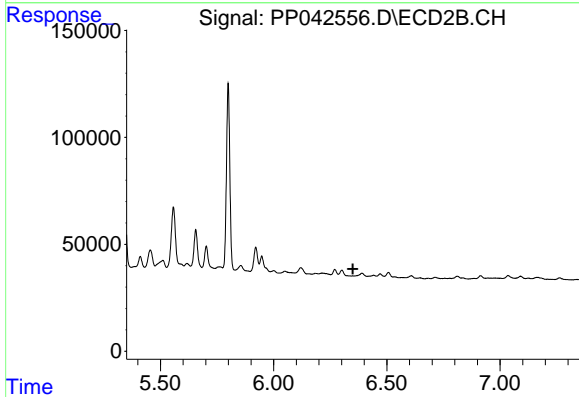




#27 AR-1254-2

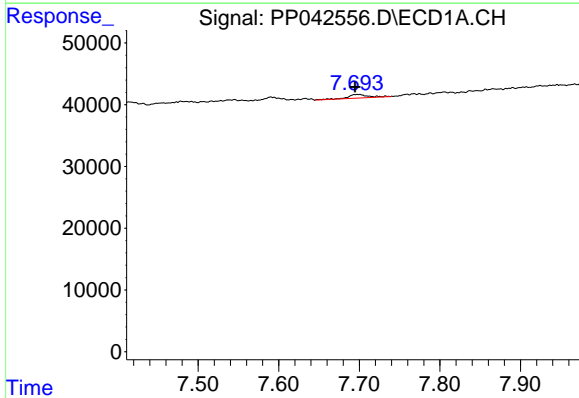
R.T.: 7.341 min  
 Delta R.T.: 0.023 min  
 Response: 10435  
 Conc: 11.36 ng/ml

Instrument :  
 ECD\_P  
 ClientSampleId :



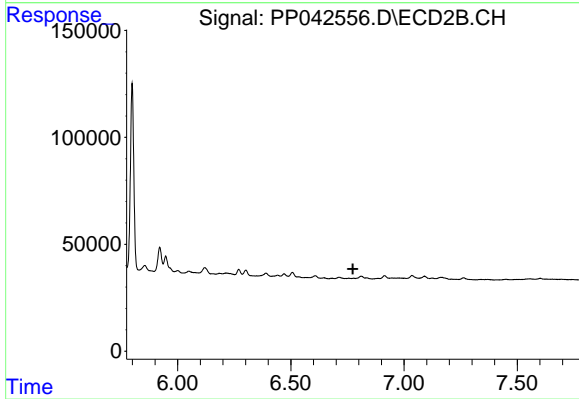
#27 AR-1254-2

R.T.: 0.000 min  
 Exp R.T. : 6.350 min  
 Response: 0  
 Conc: N.D.



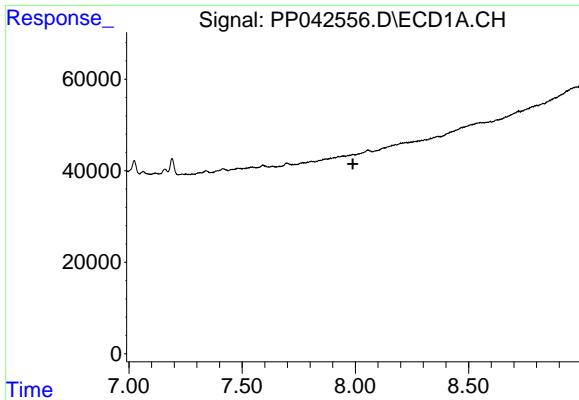
#28 AR-1254-3

R.T.: 7.699 min  
 Delta R.T.: 0.004 min  
 Response: 10188  
 Conc: 11.12 ng/ml



#28 AR-1254-3

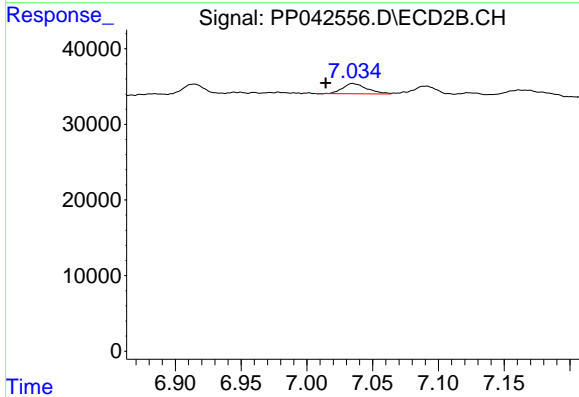
R.T.: 0.000 min  
 Exp R.T. : 6.774 min  
 Response: 0  
 Conc: N.D.



#29 AR-1254-4

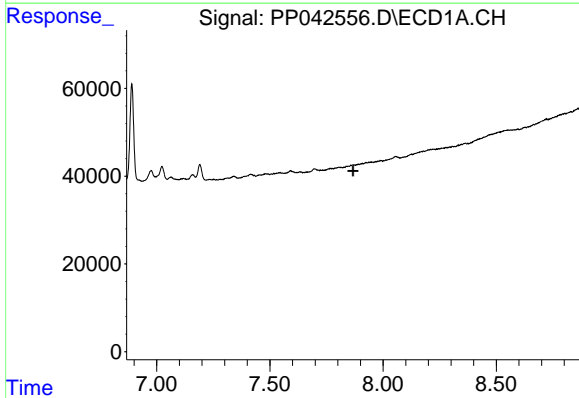
R.T.: 0.000 min  
 Exp R.T.: 7.989 min  
 Response: 0  
 Conc: N.D.

Instrument :  
 ECD\_P  
 ClientSampleId :



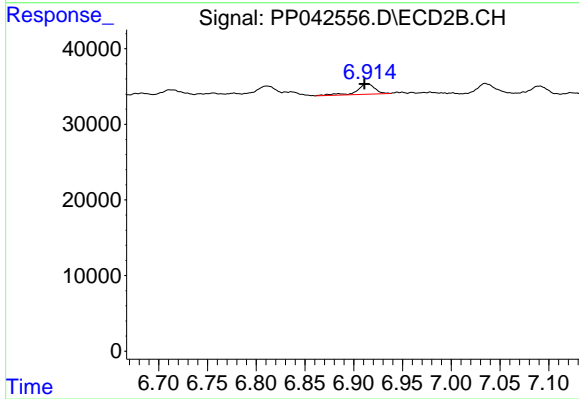
#29 AR-1254-4

R.T.: 7.035 min  
 Delta R.T.: 0.021 min  
 Response: 17168  
 Conc: 14.03 ng/ml



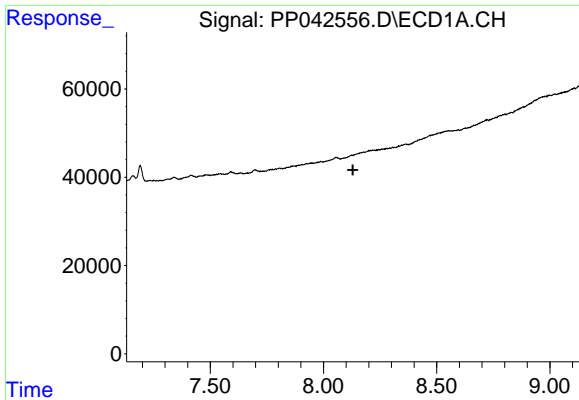
#31 AR-1260-1

R.T.: 0.000 min  
 Exp R.T.: 7.867 min  
 Response: 0  
 Conc: N.D.



#31 AR-1260-1

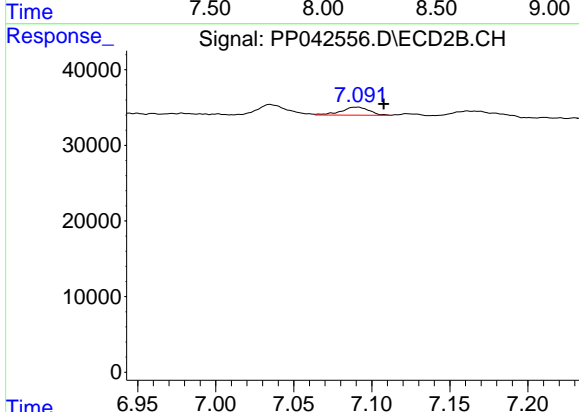
R.T.: 6.914 min  
 Delta R.T.: 0.003 min  
 Response: 17526  
 Conc: 13.47 ng/ml



#32 AR-1260-2

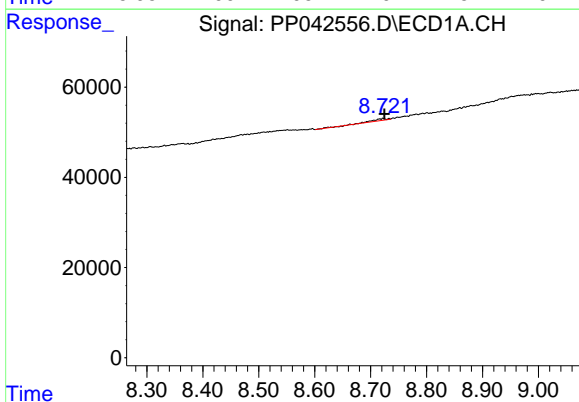
R.T.: 0.000 min  
 Exp R.T.: 8.130 min  
 Response: 0  
 Conc: N.D.

Instrument :  
 ECD\_P  
 ClientSampleId :



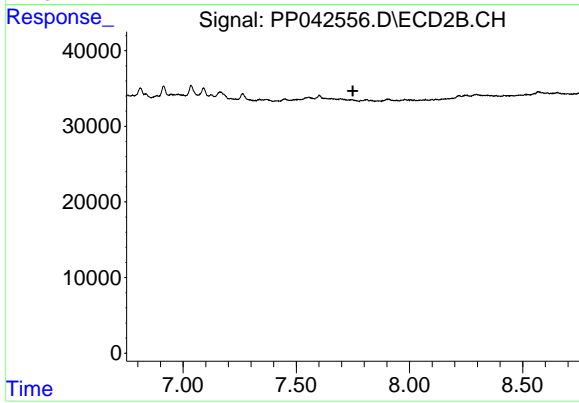
#32 AR-1260-2

R.T.: 7.090 min  
 Delta R.T.: -0.017 min  
 Response: 13271  
 Conc: 8.73 ng/ml



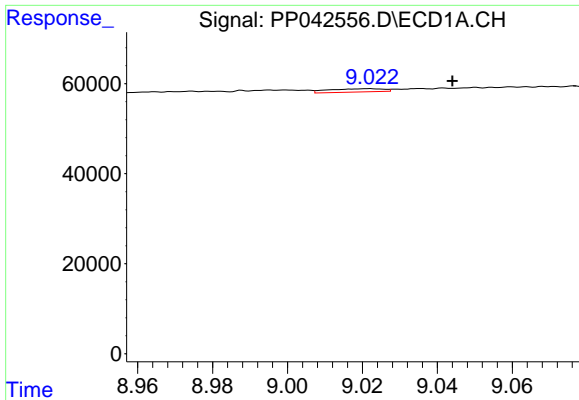
#34 AR-1260-4

R.T.: 8.722 min  
 Delta R.T.: -0.002 min  
 Response: 8526  
 Conc: 12.92 ng/ml



#34 AR-1260-4

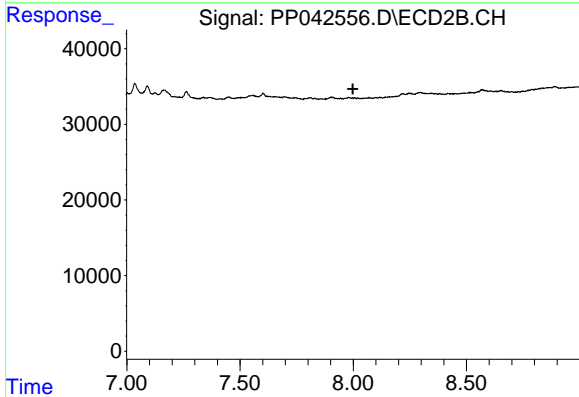
R.T.: 0.000 min  
 Exp R.T.: 7.750 min  
 Response: 0  
 Conc: N.D.



#35 AR-1260-5

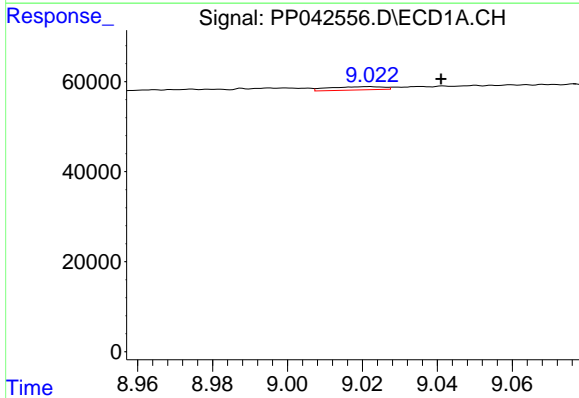
R.T.: 9.022 min  
 Delta R.T.: -0.022 min  
 Response: 7302  
 Conc: 6.05 ng/ml

Instrument :  
 ECD\_P  
 ClientSampleId :



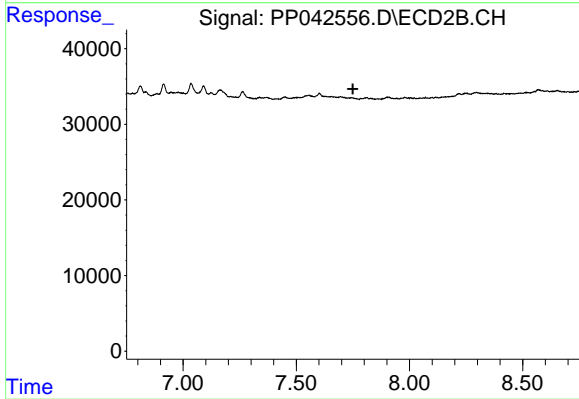
#35 AR-1260-5

R.T.: 0.000 min  
 Exp R.T. : 7.998 min  
 Response: 0  
 Conc: N.D.



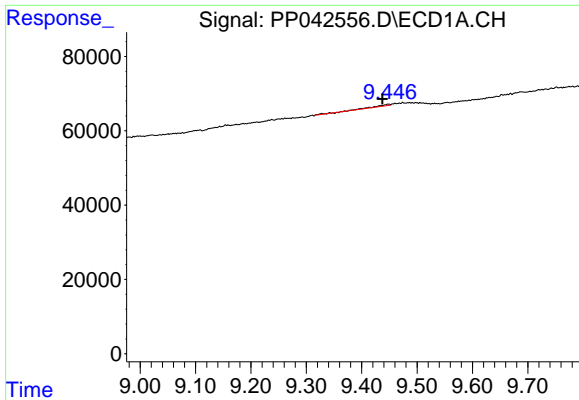
#37 AR-1262-2

R.T.: 9.022 min  
 Delta R.T.: -0.019 min  
 Response: 7302  
 Conc: 5.46 ng/ml



#37 AR-1262-2

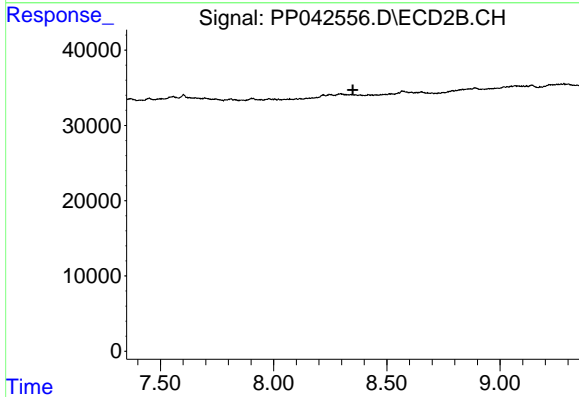
R.T.: 0.000 min  
 Exp R.T. : 7.750 min  
 Response: 0  
 Conc: N.D.



#39 AR-1262-4

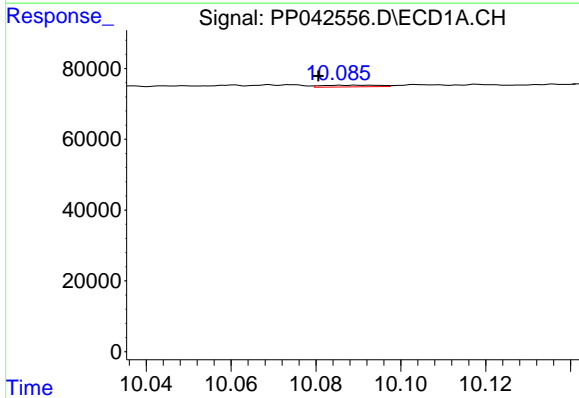
R.T.: 9.448 min  
 Delta R.T.: 0.010 min  
 Response: 7020  
 Conc: 14.53 ng/ml

Instrument :  
 ECD\_P  
 ClientSampleId :



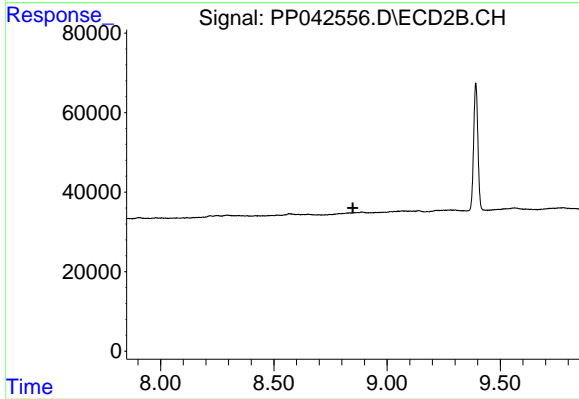
#39 AR-1262-4

R.T.: 0.000 min  
 Exp R.T. : 8.350 min  
 Response: 0  
 Conc: N.D.



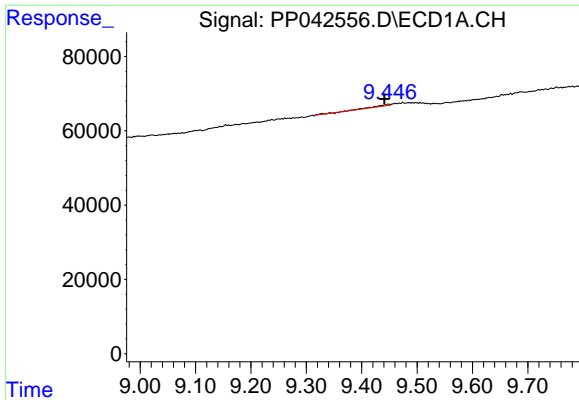
#40 AR-1262-5

R.T.: 10.087 min  
 Delta R.T.: 0.006 min  
 Response: 4296  
 Conc: 8.80 ng/ml



#40 AR-1262-5

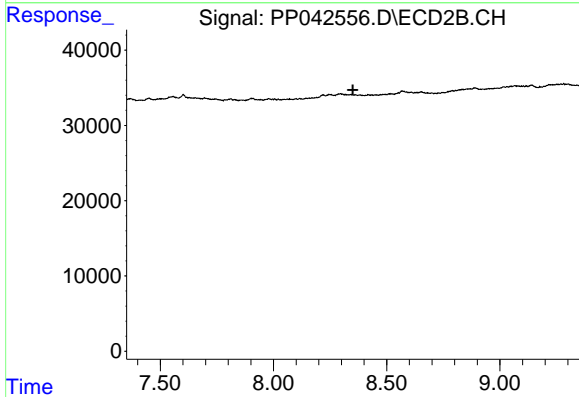
R.T.: 0.000 min  
 Exp R.T. : 8.849 min  
 Response: 0  
 Conc: N.D.



#42 AR-1268-2

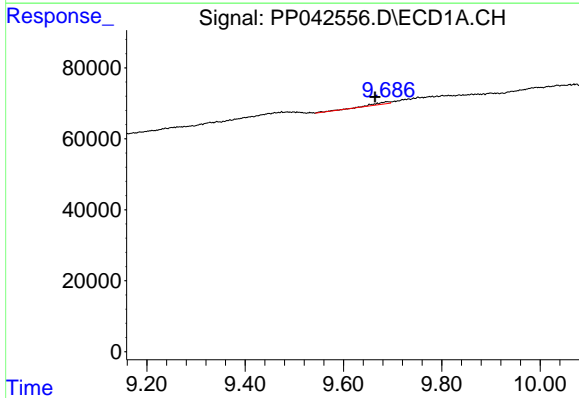
R.T.: 9.448 min  
 Delta R.T.: 0.007 min  
 Response: 7020  
 Conc: 4.64 ng/ml

Instrument :  
 ECD\_P  
 ClientSampleId :



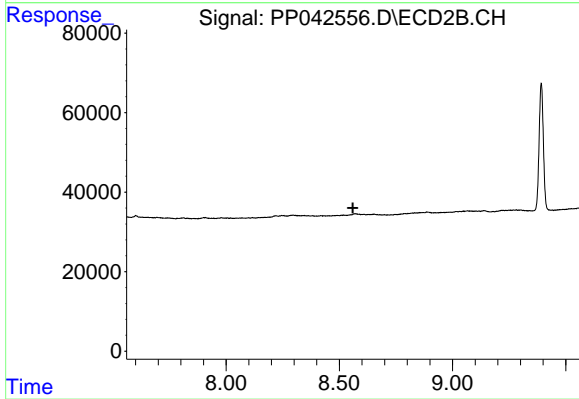
#42 AR-1268-2

R.T.: 0.000 min  
 Exp R.T. : 8.351 min  
 Response: 0  
 Conc: N.D.



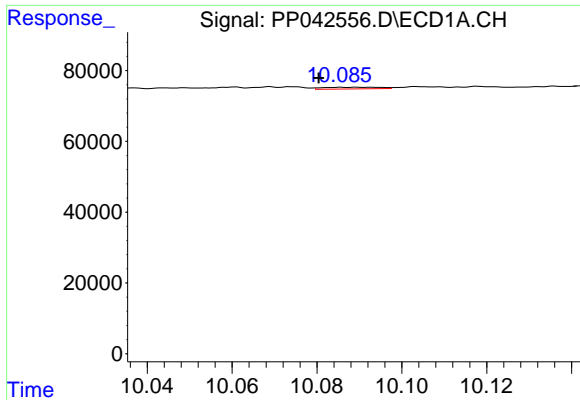
#43 AR-1268-3

R.T.: 9.688 min  
 Delta R.T.: 0.024 min  
 Response: 13522  
 Conc: 10.05 ng/ml



#43 AR-1268-3

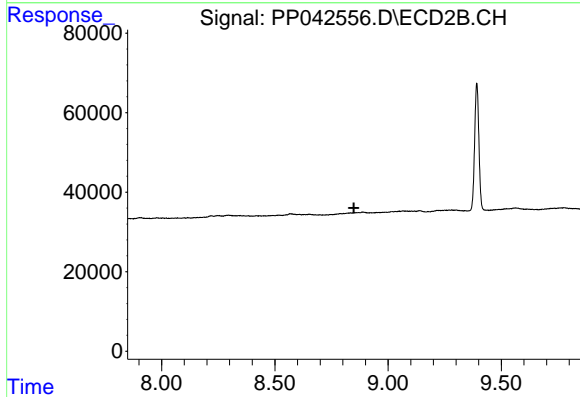
R.T.: 0.000 min  
 Exp R.T. : 8.560 min  
 Response: 0  
 Conc: N.D.



#44 AR-1268-4

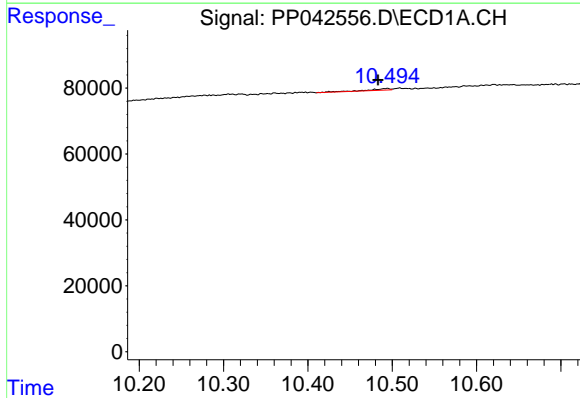
R.T.: 10.087 min  
 Delta R.T.: 0.006 min  
 Response: 4296  
 Conc: 7.85 ng/ml

Instrument :  
 ECD\_P  
 ClientSampleId :



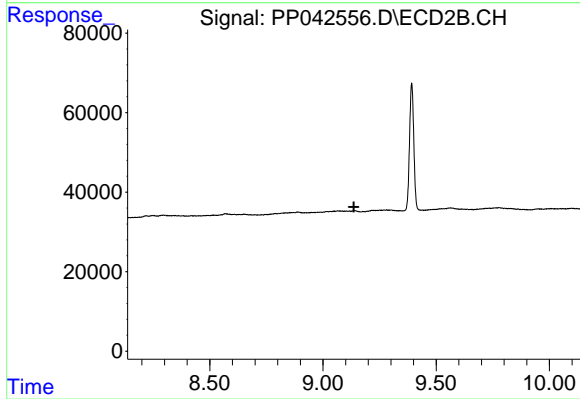
#44 AR-1268-4

R.T.: 0.000 min  
 Exp R.T. : 8.849 min  
 Response: 0  
 Conc: N.D.



#45 AR-1268-5

R.T.: 10.494 min  
 Delta R.T.: 0.011 min  
 Response: 9279  
 Conc: 2.08 ng/ml



#45 AR-1268-5

R.T.: 0.000 min  
 Exp R.T. : 9.137 min  
 Response: 0  
 Conc: N.D.