

Data Path : Z:\pestpcbsrv\HPCHEM1\ECD_P\Data\PP010522\
 Data File : PP042593.D
 Signal(s) : Signal #1: ECD1A.CH Signal #2: ECD2B.CH
 Acq On : 06 Jan 2022 6:28
 Operator : AJ\MA
 Sample : AR1254CCC500
 Misc :
 ALS Vial : 6 Sample Multiplier: 1

Instrument :
 ECD_P
 ClientSampleId :

Integration File signal 1: autoint1.e
 Integration File signal 2: autoint2.e
 Quant Time: Jan 06 13:49:28 2022
 Quant Method : Z:\pestpcbsrv\HPCHEM1\ECD_P\methods\PP010422.M
 Quant Title : GC EXTRACTABLES
 QLast Update : Wed Jan 05 12:01:35 2022
 Response via : Initial Calibration
 Integrator: ChemStation 6890 Scale Mode: Small noise peaks clipped

Volume Inj. : 2 µl
 Signal #1 Phase : ZB-MR1 Signal #2 Phase: ZB-MR2
 Signal #1 Info : 30Mx0.32mmx 0.50µ Signal #2 Info : 30M x 0.32mm x 0.25µm

Compound	RT#1	RT#2	Resp#1	Resp#2	ng/ml	ng/ml
System Monitoring Compounds						
1) SA Tetrachlo...	4.880	4.049	972393	1295326	50.192	49.483
2) SA Decachlor...	10.818	9.389	639563	967778	54.516	49.244
Target Compounds						
3) L1 AR-1016-1	6.183	5.314	8431	13577	14.128	12.993
4) L1 AR-1016-2	6.209	5.336	9937	11310	11.396	7.994 #
5) L1 AR-1016-3	0.000	5.529	0	9553	N.D.	11.722 #
6) L1 AR-1016-4	0.000	5.579	0	314156	N.D.	486.587 #
7) L1 AR-1016-5	6.694	5.813	101452	142185	234.869	173.137 #
9) L2 AR-1221-2	5.229	4.405	12640	19017	79.888	70.817
12) L3 AR-1232-2	0.000	5.336	0	11310	N.D.	19.006 #
13) L3 AR-1232-3	6.209	5.529	9937	9553	27.881	29.227
14) L3 AR-1232-4	0.000	5.624	0	96939	N.D.	329.150 #
15) L3 AR-1232-5	6.479	5.813	176363	142185	1420.204	444.249 #
16) L4 AR-1242-1	6.183	5.314	8431	13577	18.279	16.390
17) L4 AR-1242-2	6.209	5.336	9937	11310	14.883	10.109 #
18) L4 AR-1242-3	0.000	5.529	0	9553	N.D.	14.773 #
19) L4 AR-1242-4	0.000	5.624	0	96939	N.D.	154.699 #
20) L4 AR-1242-5	7.161	6.192	88641	729027	268.977	993.935 #
21) L5 AR-1248-1	6.183	5.314	8431	13577	24.912	22.313
22) L5 AR-1248-2	6.479	5.579	176363	314156	382.520	368.981
23) L5 AR-1248-3	6.694	5.624	101452	96939	178.306	107.302 #
24) L5 AR-1248-4	7.118	5.813	147054	142185	262.958	135.832 #
25) L5 AR-1248-5	7.161	6.235	88641	111007	161.789	111.884 #
26) L6 AR-1254-1	7.091	6.192	292097	729027	479.476	473.445
27) L6 AR-1254-2	7.320	6.351	464785	625879	506.119	465.661
28) L6 AR-1254-3	7.698	6.776	490558	1015063	535.507	485.995
29) L6 AR-1254-4	7.992	7.016	361909	588894	604.209	481.188
30) L6 AR-1254-5	8.420	7.447	354757	795502	561.105	484.344
31) L7 AR-1260-1	7.868	6.913	155295	489892	255.515	376.501 #
32) L7 AR-1260-2	8.131	7.109	223385	378782	317.583	249.152
33) L7 AR-1260-3	8.481f	7.266	45686	378625	82.461	264.831 #
34) L7 AR-1260-4	8.712	7.752	129704	36957	196.603	33.574 #
35) L7 AR-1260-5	9.044	7.999	48332	80876	40.067	33.507
36) L8 AR-1262-1	8.481	7.447	45686	795502	58.358	916.398 #
37) L8 AR-1262-2	9.044	7.752	48332	36957	36.142	26.659 #
38) L8 AR-1262-3	9.366	0.000	31083	0	47.159	N.D. #
39) L8 AR-1262-4	9.437	8.349	964	77966	1.994	40.450 #
41) L9 AR-1268-1	9.366f	0.000	31083	0	18.997	N.D. #
42) L9 AR-1268-2	9.437	8.349	964	77966	0.637	27.536 #
43) L9 AR-1268-3	9.690f	8.570	16735	9490	12.434	3.929 #
45) L9 AR-1268-5	10.496	0.000	9687	0	2.171	N.D. #

Data Path : Z:\pestpcbsrv\HPCHEM1\ECD_P\Data\PP010522\
Data File : PP042593.D
Signal(s) : Signal #1: ECD1A.CH Signal #2: ECD2B.CH
Acq On : 06 Jan 2022 6:28
Operator : AJ\MA
Sample : AR1254CCC500
Misc :
ALS Vial : 6 Sample Multiplier: 1

Instrument :
ECD_P
ClientSampleId :

Integration File signal 1: autoint1.e
Integration File signal 2: autoint2.e
Quant Time: Jan 06 13:49:28 2022
Quant Method : Z:\pestpcbsrv\HPCHEM1\ECD_P\methods\PP010422.M
Quant Title : GC EXTRACTABLES
QLast Update : Wed Jan 05 12:01:35 2022
Response via : Initial Calibration
Integrator: ChemStation 6890 Scale Mode: Small noise peaks clipped

Volume Inj. : 2 µl
Signal #1 Phase : ZB-MR1 Signal #2 Phase: ZB-MR2
Signal #1 Info : 30Mx0.32mmx 0.50µ Signal #2 Info : 30M x 0.32mm x 0.25µm

Compound	RT#1	RT#2	Resp#1	Resp#2	ng/ml	ng/ml
----------	------	------	--------	--------	-------	-------

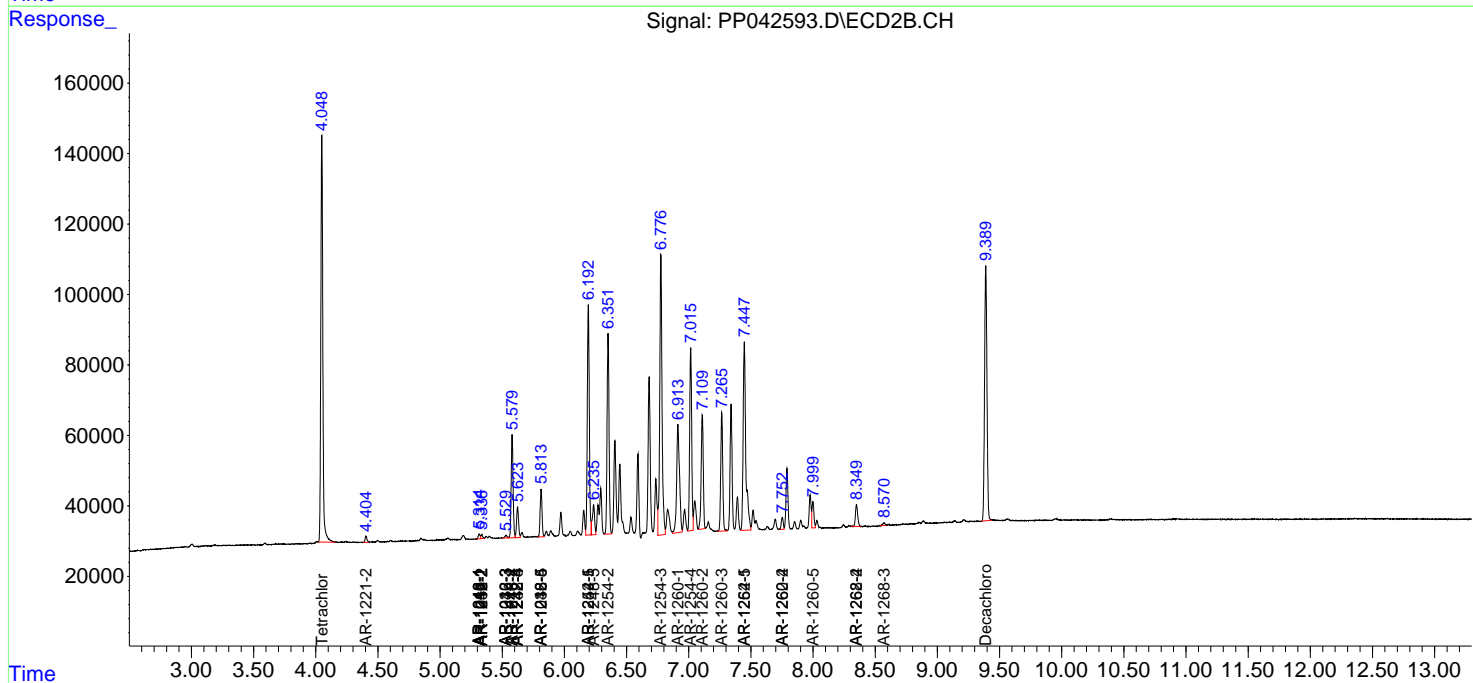
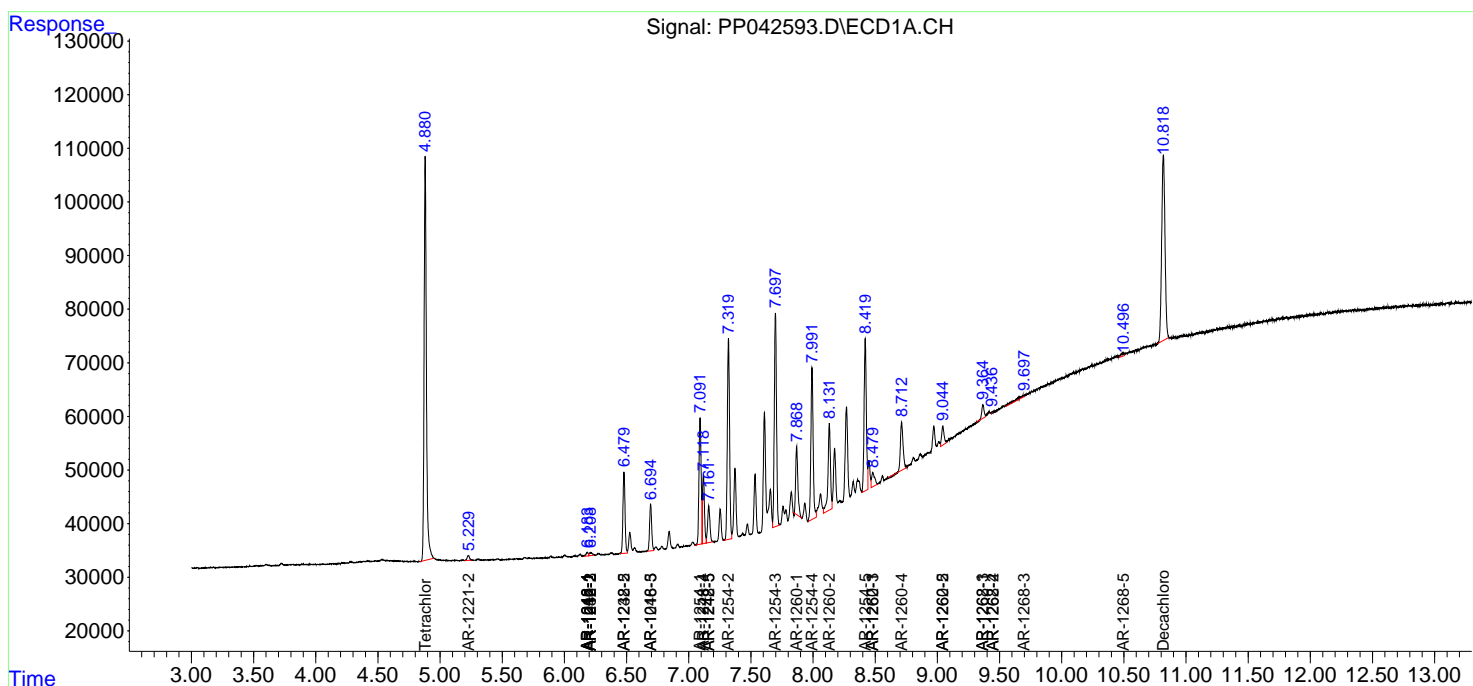
(f)=RT Delta > 1/2 Window (#)=Amounts differ by > 25% (m)=manual int.

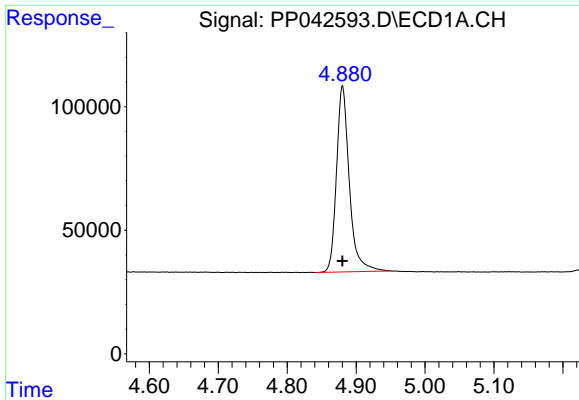
Data Path : Z:\pestpcbsrv\HPCHEM1\ECD_P\Data\PP010522\
 Data File : PP042593.D
 Signal(s) : Signal #1: ECD1A.CH Signal #2: ECD2B.CH
 Acq On : 06 Jan 2022 6:28
 Operator : AJ\MA
 Sample : AR1254CCC500
 Misc :
 ALS Vial : 6 Sample Multiplier: 1

Instrument :
 ECD_P
 ClientSampleId :

Integration File signal 1: autoint1.e
 Integration File signal 2: autoint2.e
 Quant Time: Jan 06 13:49:28 2022
 Quant Method : Z:\pestpcbsrv\HPCHEM1\ECD_P\methods\PP010422.M
 Quant Title : GC EXTRACTABLES
 QLast Update : Wed Jan 05 12:01:35 2022
 Response via : Initial Calibration
 Integrator: ChemStation 6890 Scale Mode: Small noise peaks clipped

Volume Inj. : 2 µl
 Signal #1 Phase : ZB-MR1 Signal #2 Phase: ZB-MR2
 Signal #1 Info : 30Mx0.32mmx 0.50µ Signal #2 Info : 30M x 0.32mm x 0.25µm

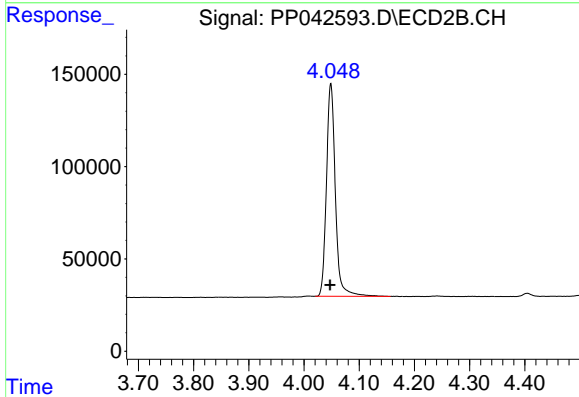




#1 Tetrachloro-m-xylene

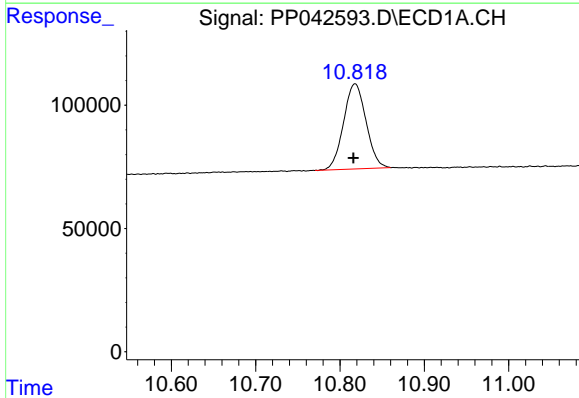
R.T.: 4.880 min
 Delta R.T.: 0.000 min
 Response: 972393
 Conc: 50.19 ng/ml

Instrument :
 ECD_P
 ClientSampleId :



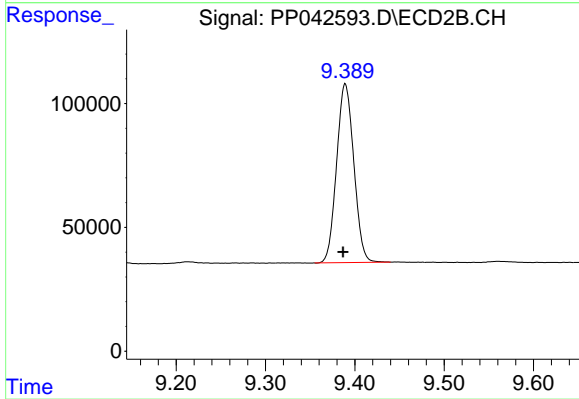
#1 Tetrachloro-m-xylene

R.T.: 4.049 min
 Delta R.T.: 0.001 min
 Response: 1295326
 Conc: 49.48 ng/ml



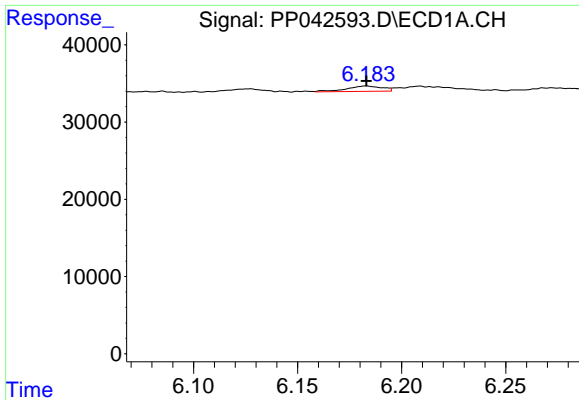
#2 Decachlorobiphenyl

R.T.: 10.818 min
 Delta R.T.: 0.002 min
 Response: 639563
 Conc: 54.52 ng/ml



#2 Decachlorobiphenyl

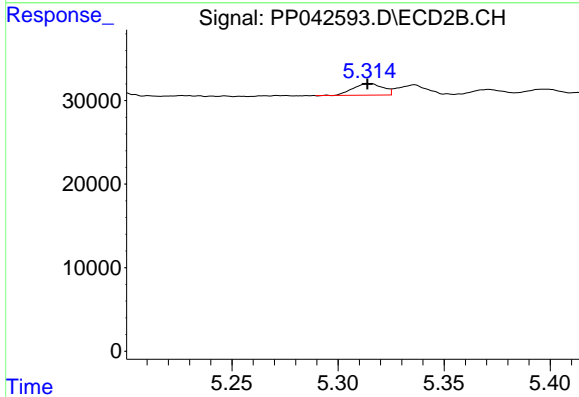
R.T.: 9.389 min
 Delta R.T.: 0.002 min
 Response: 967778
 Conc: 49.24 ng/ml



#3 AR-1016-1

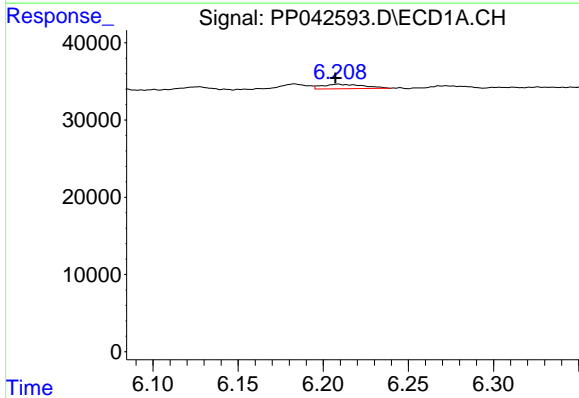
R.T.: 6.183 min
 Delta R.T.: 0.000 min
 Response: 8431
 Conc: 14.13 ng/ml

Instrument :
 ECD_P
 ClientSampleId :



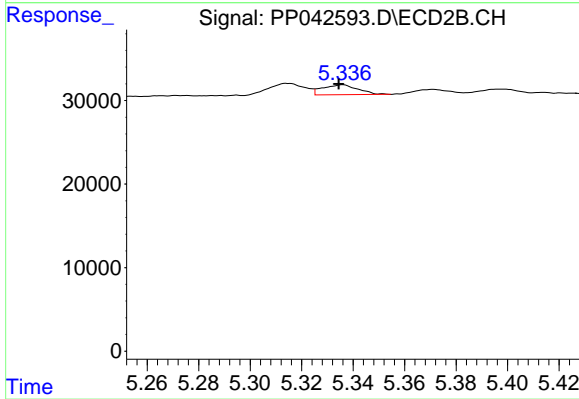
#3 AR-1016-1

R.T.: 5.314 min
 Delta R.T.: 0.000 min
 Response: 13577
 Conc: 12.99 ng/ml



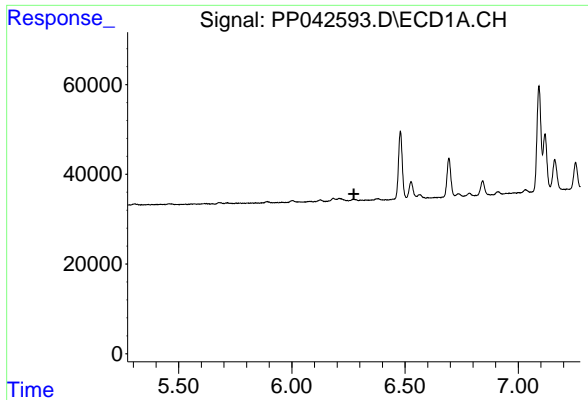
#4 AR-1016-2

R.T.: 6.209 min
 Delta R.T.: 0.002 min
 Response: 9937
 Conc: 11.40 ng/ml



#4 AR-1016-2

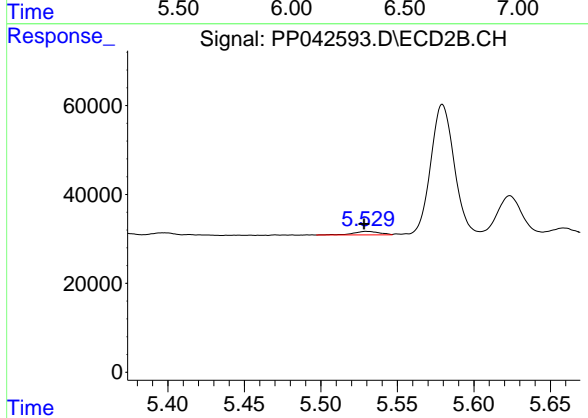
R.T.: 5.336 min
 Delta R.T.: 0.002 min
 Response: 11310
 Conc: 7.99 ng/ml



#5 AR-1016-3

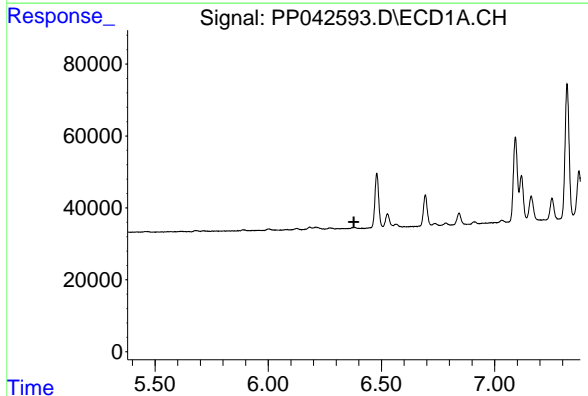
R.T.: 0.000 min
 Exp R.T.: 6.274 min
 Response: 0
 Conc: N.D.

Instrument :
 ECD_P
 ClientSampleId :



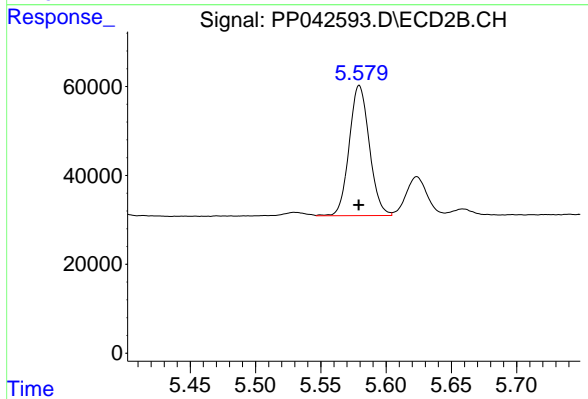
#5 AR-1016-3

R.T.: 5.529 min
 Delta R.T.: 0.001 min
 Response: 9553
 Conc: 11.72 ng/ml



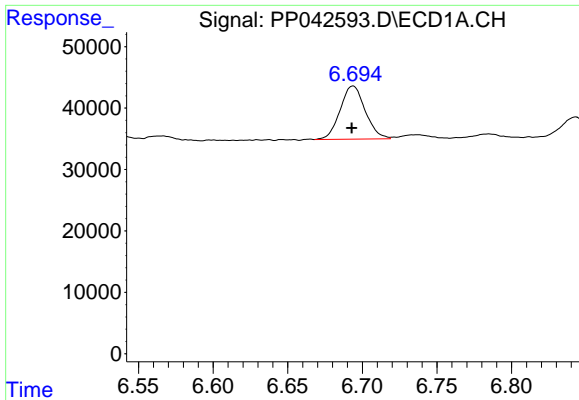
#6 AR-1016-4

R.T.: 0.000 min
 Exp R.T.: 6.378 min
 Response: 0
 Conc: N.D.



#6 AR-1016-4

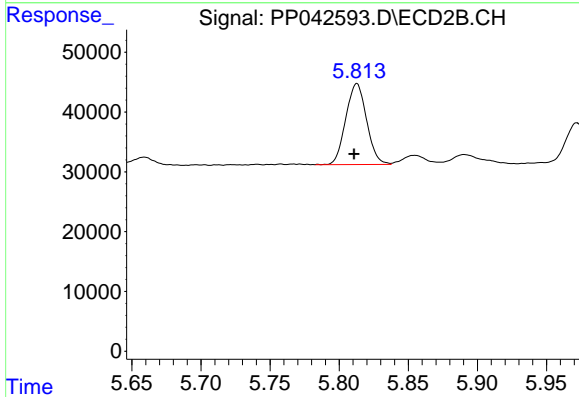
R.T.: 5.579 min
 Delta R.T.: 0.000 min
 Response: 314156
 Conc: 486.59 ng/ml



#7 AR-1016-5

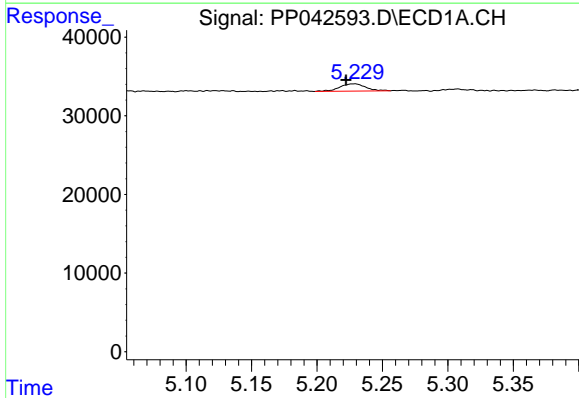
R.T.: 6.694 min
 Delta R.T.: 0.001 min
 Response: 101452
 Conc: 234.87 ng/ml

Instrument :
 ECD_P
 ClientSampleId :



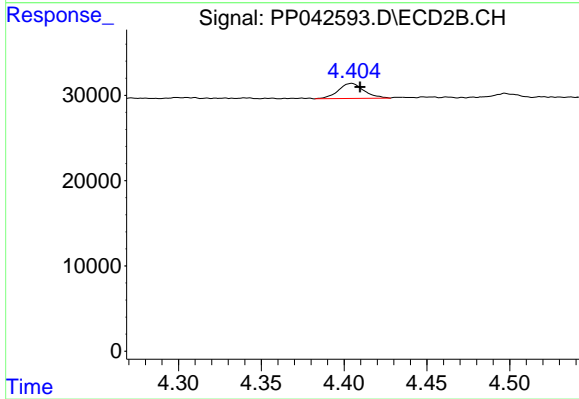
#7 AR-1016-5

R.T.: 5.813 min
 Delta R.T.: 0.002 min
 Response: 142185
 Conc: 173.14 ng/ml



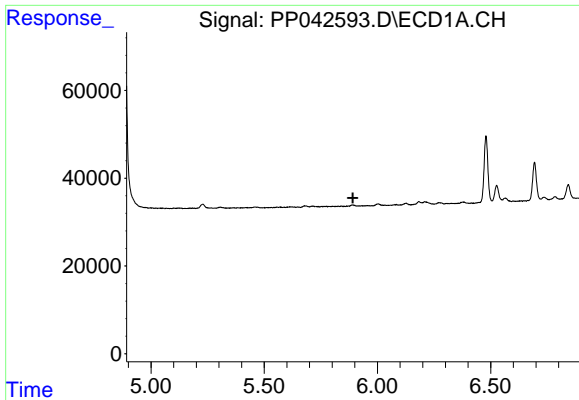
#9 AR-1221-2

R.T.: 5.229 min
 Delta R.T.: 0.007 min
 Response: 12640
 Conc: 79.89 ng/ml



#9 AR-1221-2

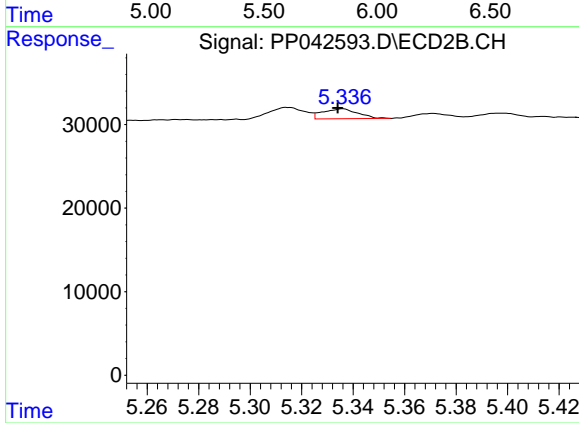
R.T.: 4.405 min
 Delta R.T.: -0.005 min
 Response: 19017
 Conc: 70.82 ng/ml



#12 AR-1232-2

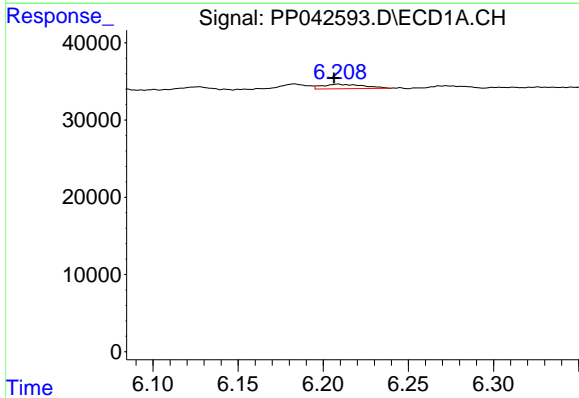
R.T.: 0.000 min
 Exp R.T.: 5.891 min
 Response: 0
 Conc: N.D.

Instrument :
 ECD_P
 ClientSampleId :



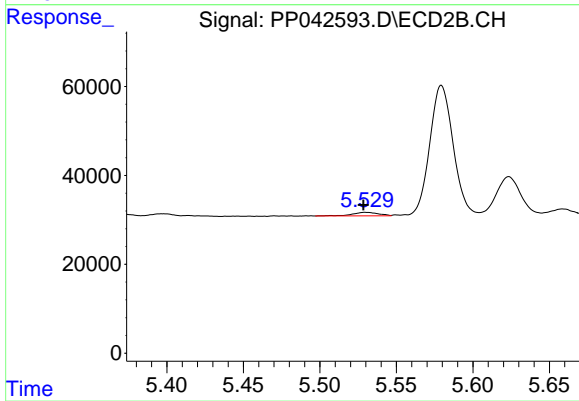
#12 AR-1232-2

R.T.: 5.336 min
 Delta R.T.: 0.002 min
 Response: 11310
 Conc: 19.01 ng/ml



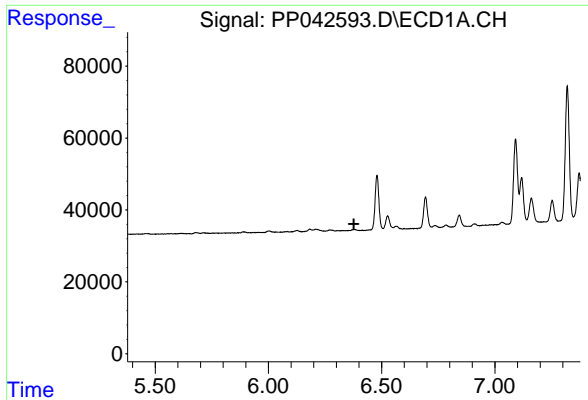
#13 AR-1232-3

R.T.: 6.209 min
 Delta R.T.: 0.002 min
 Response: 9937
 Conc: 27.88 ng/ml



#13 AR-1232-3

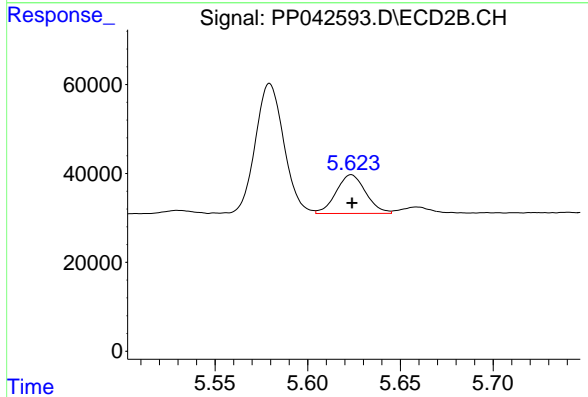
R.T.: 5.529 min
 Delta R.T.: 0.001 min
 Response: 9553
 Conc: 29.23 ng/ml



#14 AR-1232-4

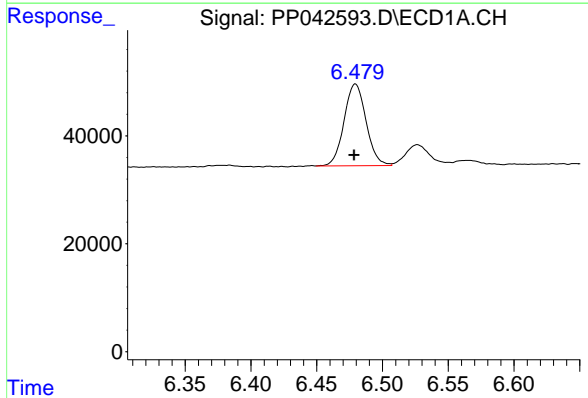
R.T.: 0.000 min
 Exp R.T.: 6.378 min
 Response: 0
 Conc: N.D.

Instrument :
 ECD_P
 ClientSampleId :



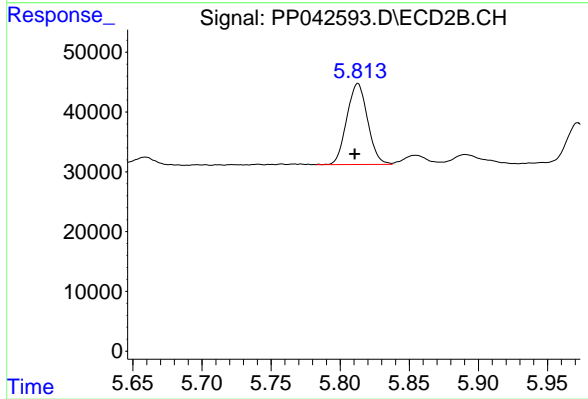
#14 AR-1232-4

R.T.: 5.624 min
 Delta R.T.: 0.000 min
 Response: 96939
 Conc: 329.15 ng/ml



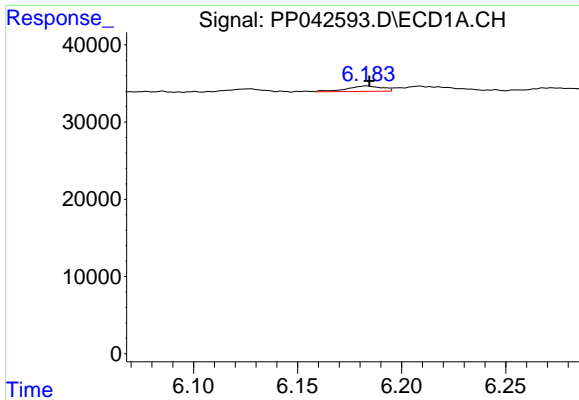
#15 AR-1232-5

R.T.: 6.479 min
 Delta R.T.: 0.001 min
 Response: 176363
 Conc: 1420.20 ng/ml



#15 AR-1232-5

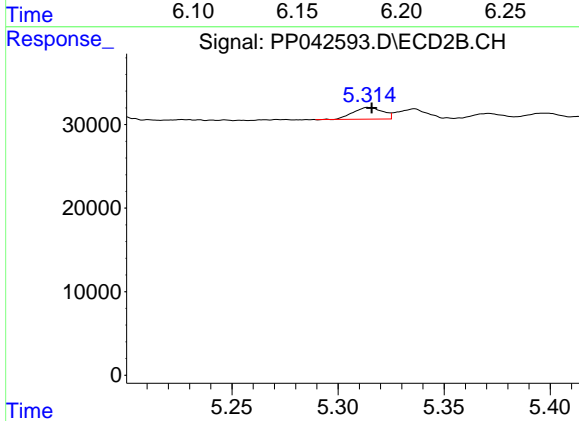
R.T.: 5.813 min
 Delta R.T.: 0.002 min
 Response: 142185
 Conc: 444.25 ng/ml



#16 AR-1242-1

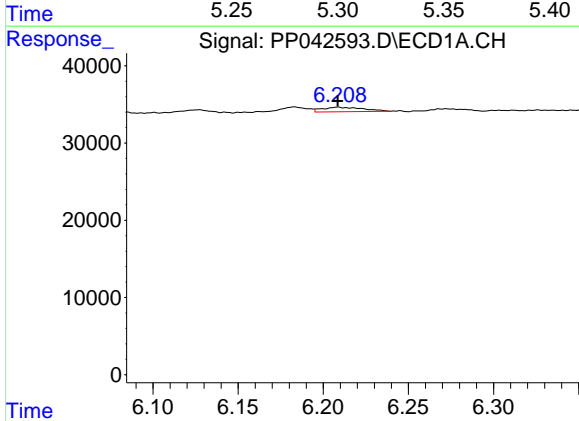
R.T.: 6.183 min
 Delta R.T.: -0.002 min
 Response: 8431
 Conc: 18.28 ng/ml

Instrument :
 ECD_P
 ClientSampleId :



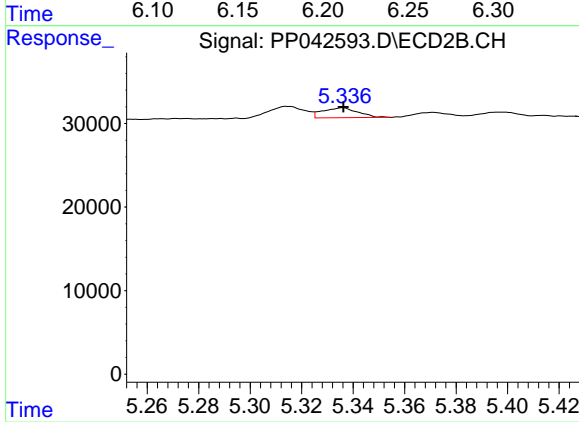
#16 AR-1242-1

R.T.: 5.314 min
 Delta R.T.: -0.002 min
 Response: 13577
 Conc: 16.39 ng/ml



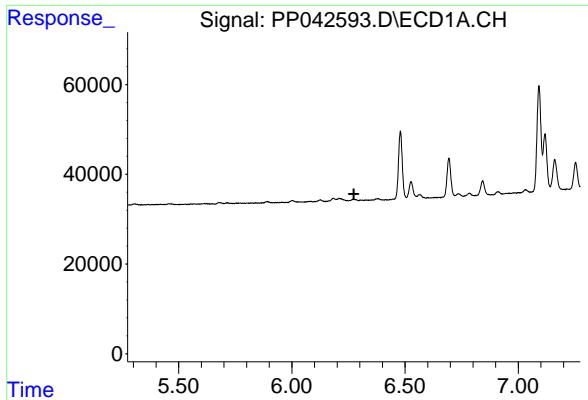
#17 AR-1242-2

R.T.: 6.209 min
 Delta R.T.: 0.000 min
 Response: 9937
 Conc: 14.88 ng/ml



#17 AR-1242-2

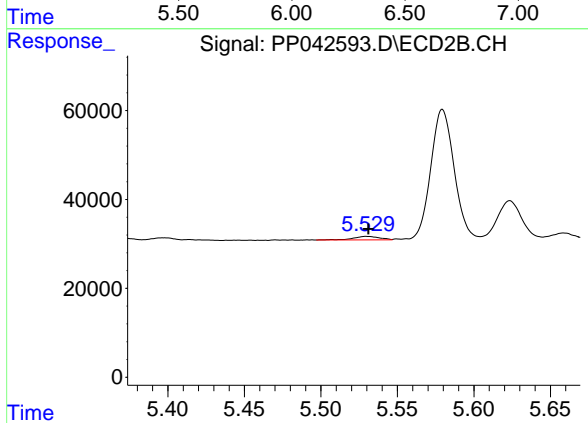
R.T.: 5.336 min
 Delta R.T.: 0.000 min
 Response: 11310
 Conc: 10.11 ng/ml



#18 AR-1242-3

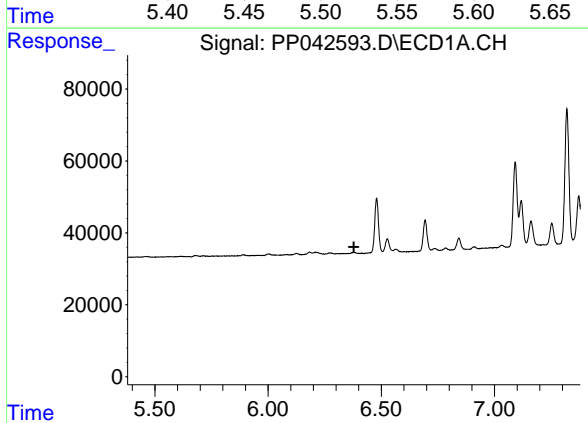
R.T.: 0.000 min
 Exp R.T.: 6.274 min
 Response: 0
 Conc: N.D.

Instrument :
 ECD_P
 ClientSampleId :



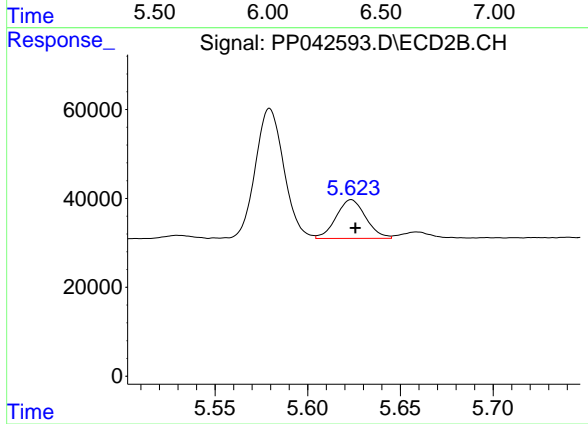
#18 AR-1242-3

R.T.: 5.529 min
 Delta R.T.: -0.002 min
 Response: 9553
 Conc: 14.77 ng/ml



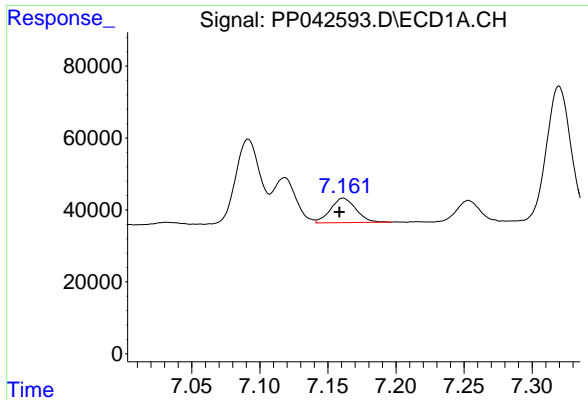
#19 AR-1242-4

R.T.: 0.000 min
 Exp R.T.: 6.379 min
 Response: 0
 Conc: N.D.



#19 AR-1242-4

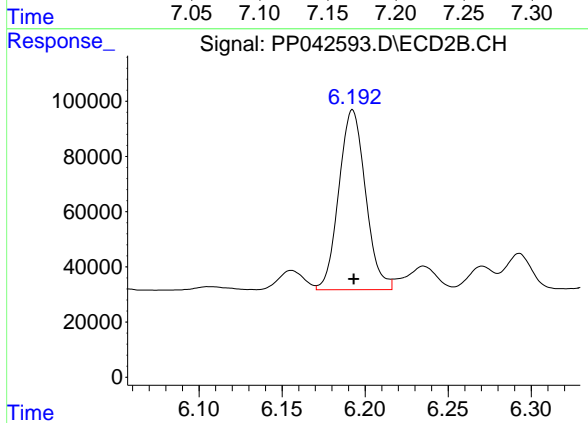
R.T.: 5.624 min
 Delta R.T.: -0.002 min
 Response: 96939
 Conc: 154.70 ng/ml



#20 AR-1242-5

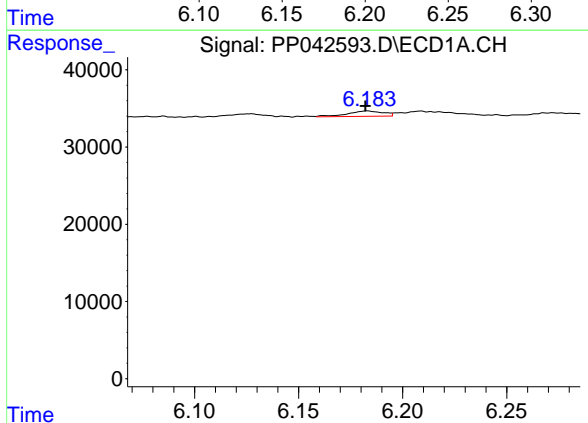
R.T.: 7.161 min
 Delta R.T.: 0.003 min
 Response: 88641
 Conc: 268.98 ng/ml

Instrument :
 ECD_P
 ClientSampleId :



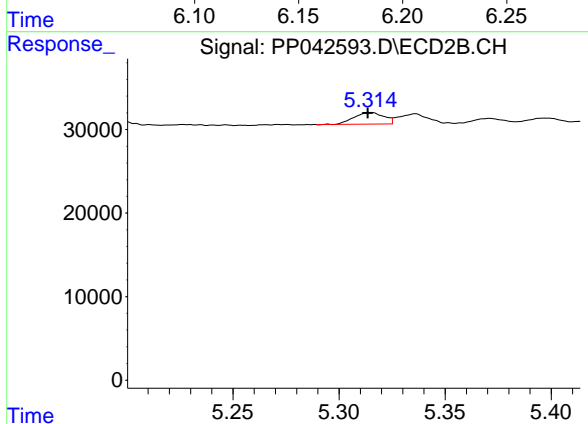
#20 AR-1242-5

R.T.: 6.192 min
 Delta R.T.: 0.000 min
 Response: 729027
 Conc: 993.93 ng/ml



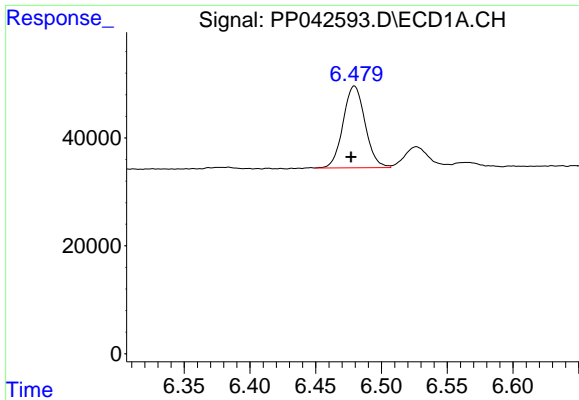
#21 AR-1248-1

R.T.: 6.183 min
 Delta R.T.: 0.000 min
 Response: 8431
 Conc: 24.91 ng/ml



#21 AR-1248-1

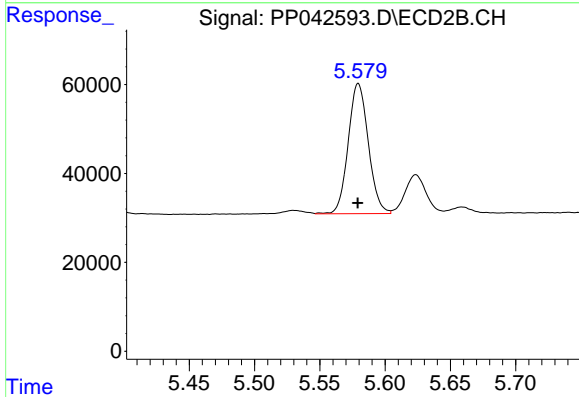
R.T.: 5.314 min
 Delta R.T.: 0.000 min
 Response: 13577
 Conc: 22.31 ng/ml



#22 AR-1248-2

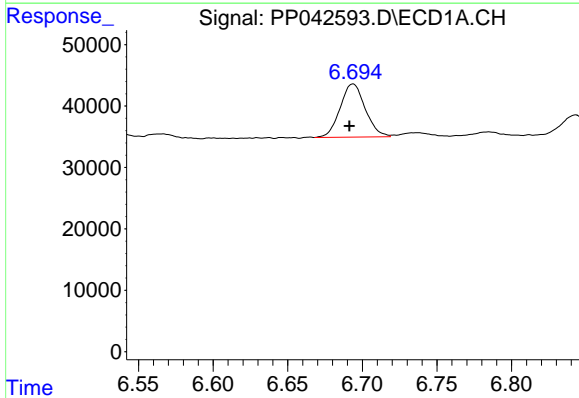
R.T.: 6.479 min
 Delta R.T.: 0.003 min
 Response: 176363
 Conc: 382.52 ng/ml

Instrument :
 ECD_P
 ClientSampleId :



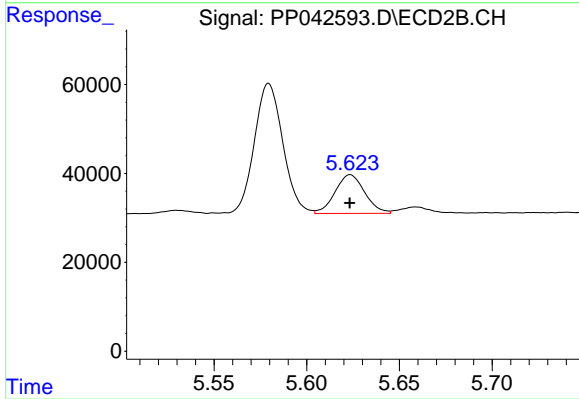
#22 AR-1248-2

R.T.: 5.579 min
 Delta R.T.: 0.000 min
 Response: 314156
 Conc: 368.98 ng/ml



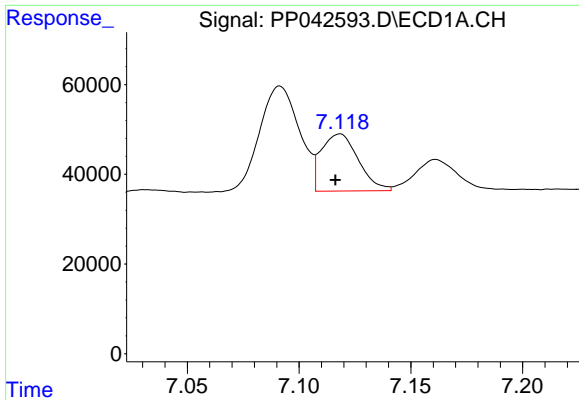
#23 AR-1248-3

R.T.: 6.694 min
 Delta R.T.: 0.002 min
 Response: 101452
 Conc: 178.31 ng/ml



#23 AR-1248-3

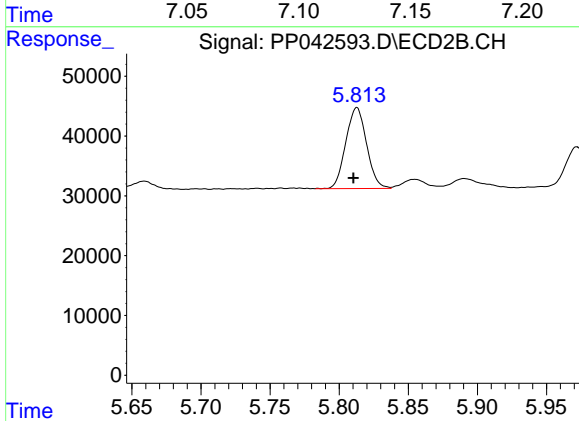
R.T.: 5.624 min
 Delta R.T.: 0.000 min
 Response: 96939
 Conc: 107.30 ng/ml



#24 AR-1248-4

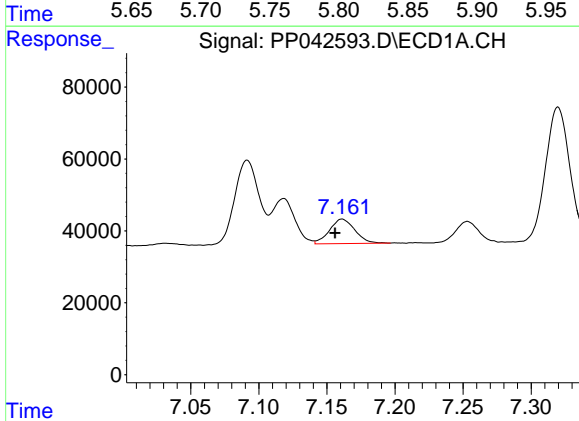
R.T.: 7.118 min
 Delta R.T.: 0.002 min
 Response: 147054
 Conc: 262.96 ng/ml

Instrument :
 ECD_P
 ClientSampleId :



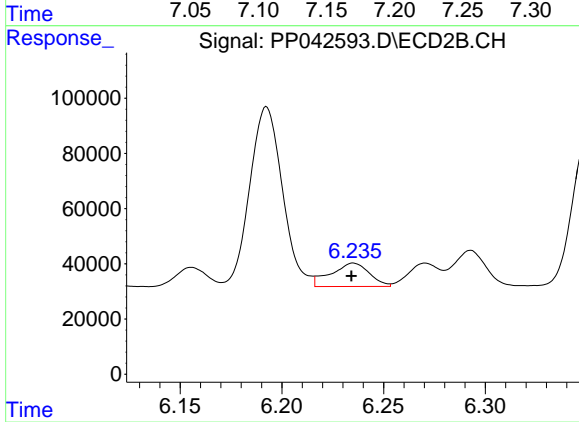
#24 AR-1248-4

R.T.: 5.813 min
 Delta R.T.: 0.003 min
 Response: 142185
 Conc: 135.83 ng/ml



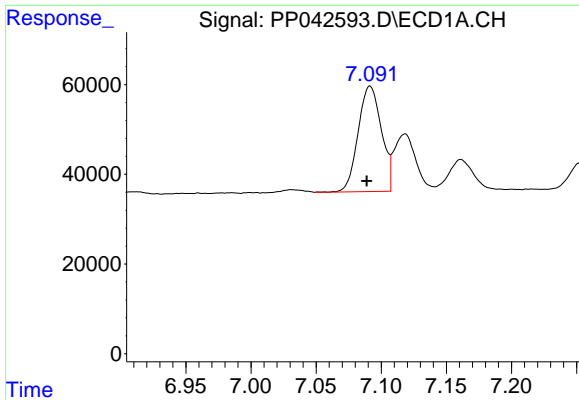
#25 AR-1248-5

R.T.: 7.161 min
 Delta R.T.: 0.005 min
 Response: 88641
 Conc: 161.79 ng/ml



#25 AR-1248-5

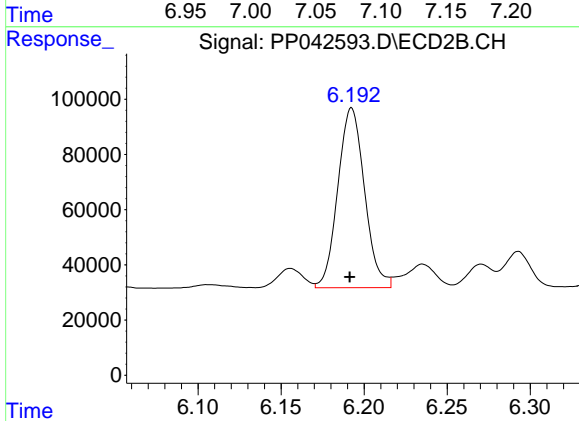
R.T.: 6.235 min
 Delta R.T.: 0.001 min
 Response: 111007
 Conc: 111.88 ng/ml



#26 AR-1254-1

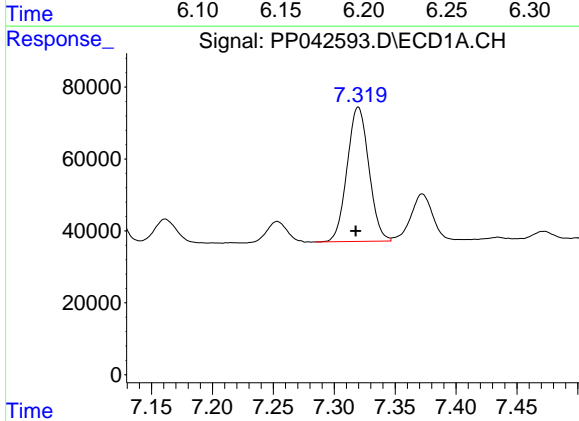
R.T.: 7.091 min
 Delta R.T.: 0.003 min
 Response: 292097
 Conc: 479.48 ng/ml

Instrument :
 ECD_P
 ClientSampleId :



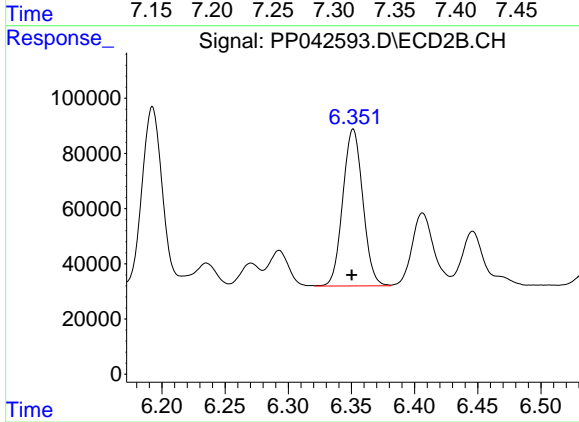
#26 AR-1254-1

R.T.: 6.192 min
 Delta R.T.: 0.001 min
 Response: 729027
 Conc: 473.44 ng/ml



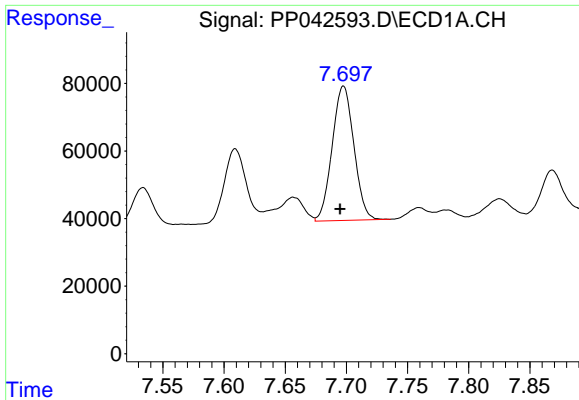
#27 AR-1254-2

R.T.: 7.320 min
 Delta R.T.: 0.002 min
 Response: 464785
 Conc: 506.12 ng/ml



#27 AR-1254-2

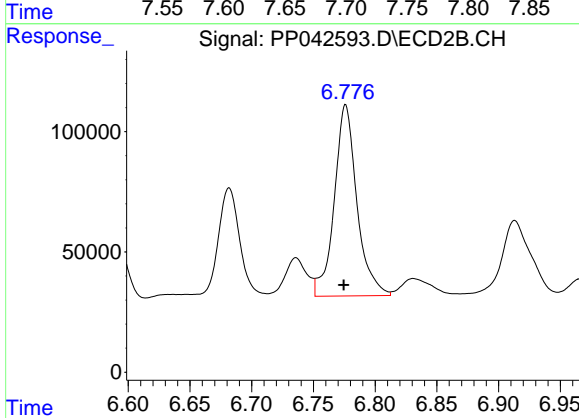
R.T.: 6.351 min
 Delta R.T.: 0.001 min
 Response: 625879
 Conc: 465.66 ng/ml



#28 AR-1254-3

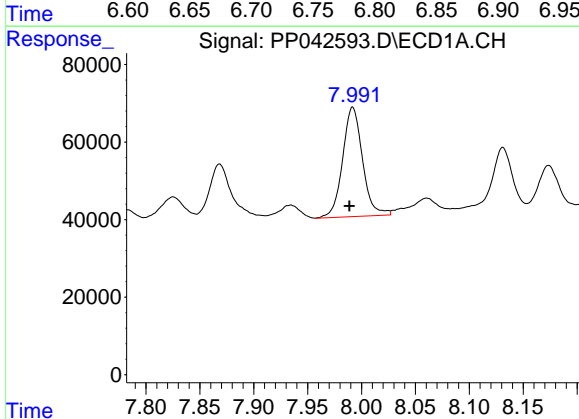
R.T.: 7.698 min
 Delta R.T.: 0.003 min
 Response: 490558
 Conc: 535.51 ng/ml

Instrument :
 ECD_P
 ClientSampleId :



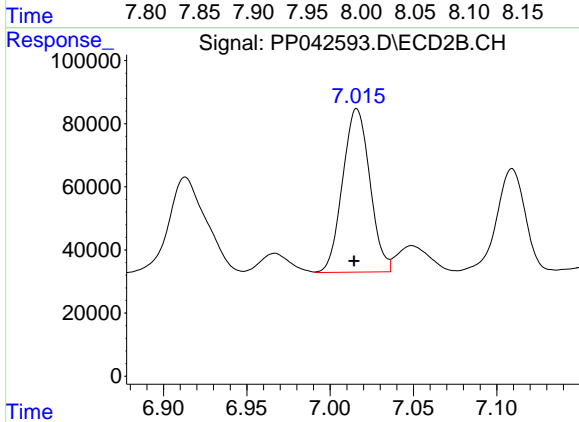
#28 AR-1254-3

R.T.: 6.776 min
 Delta R.T.: 0.002 min
 Response: 1015063
 Conc: 486.00 ng/ml



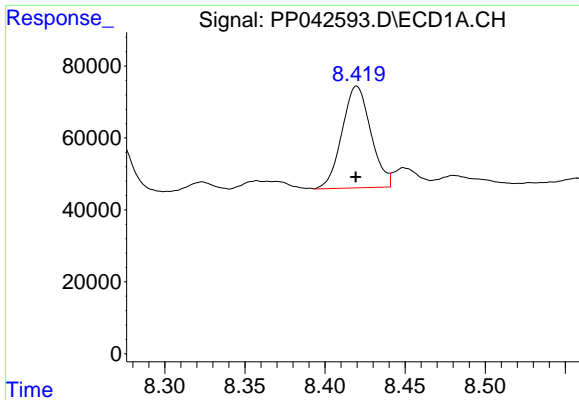
#29 AR-1254-4

R.T.: 7.992 min
 Delta R.T.: 0.003 min
 Response: 361909
 Conc: 604.21 ng/ml



#29 AR-1254-4

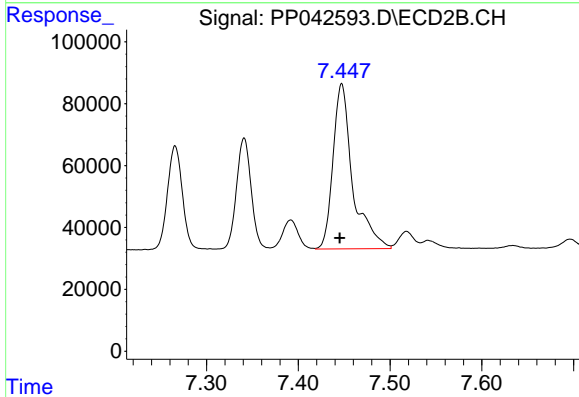
R.T.: 7.016 min
 Delta R.T.: 0.002 min
 Response: 588894
 Conc: 481.19 ng/ml



#30 AR-1254-5

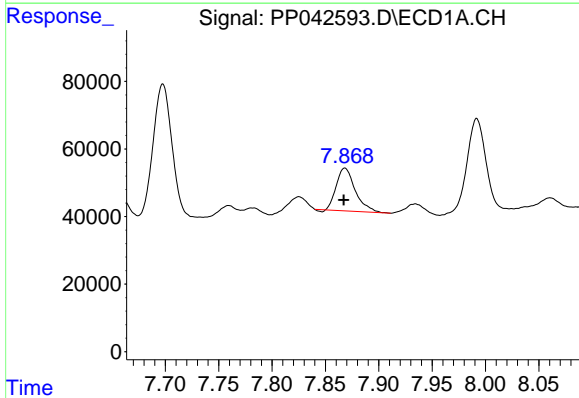
R.T.: 8.420 min
 Delta R.T.: 0.000 min
 Response: 354757
 Conc: 561.11 ng/ml

Instrument :
 ECD_P
 ClientSampleId :



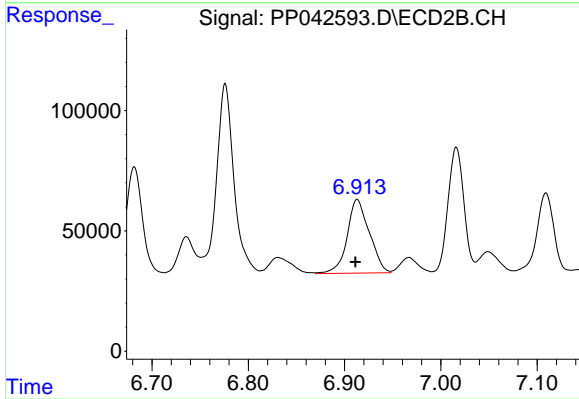
#30 AR-1254-5

R.T.: 7.447 min
 Delta R.T.: 0.002 min
 Response: 795502
 Conc: 484.34 ng/ml



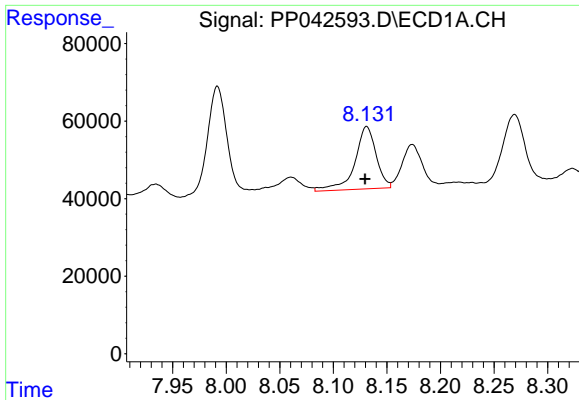
#31 AR-1260-1

R.T.: 7.868 min
 Delta R.T.: 0.001 min
 Response: 155295
 Conc: 255.52 ng/ml



#31 AR-1260-1

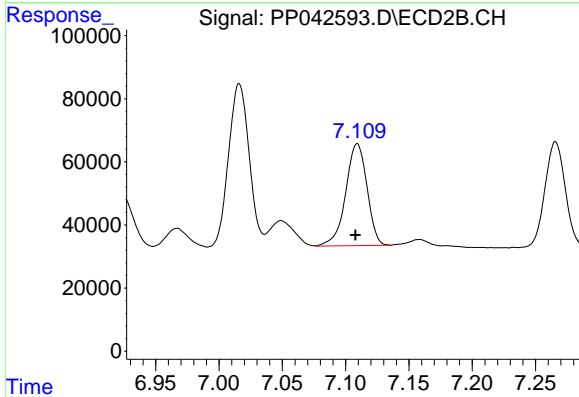
R.T.: 6.913 min
 Delta R.T.: 0.002 min
 Response: 489892
 Conc: 376.50 ng/ml



#32 AR-1260-2

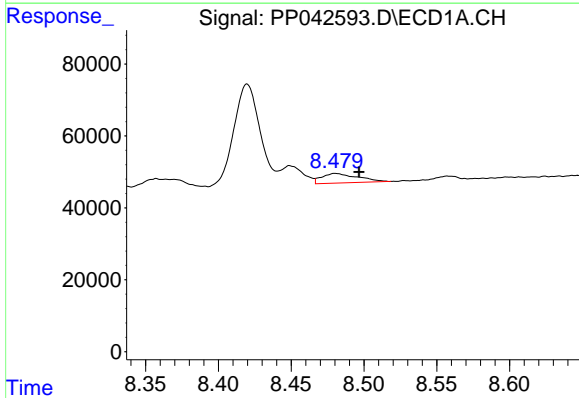
R.T.: 8.131 min
 Delta R.T.: 0.001 min
 Response: 223385
 Conc: 317.58 ng/ml

Instrument :
 ECD_P
 ClientSampleId :



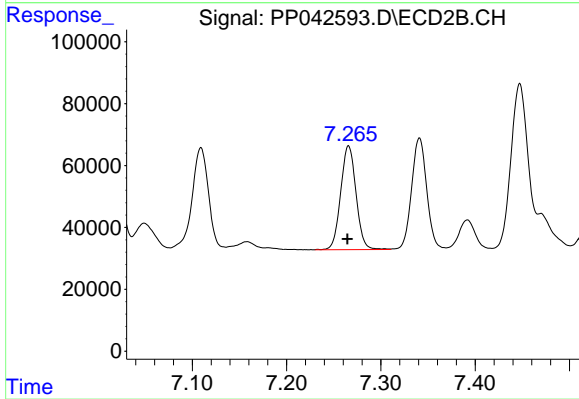
#32 AR-1260-2

R.T.: 7.109 min
 Delta R.T.: 0.002 min
 Response: 378782
 Conc: 249.15 ng/ml



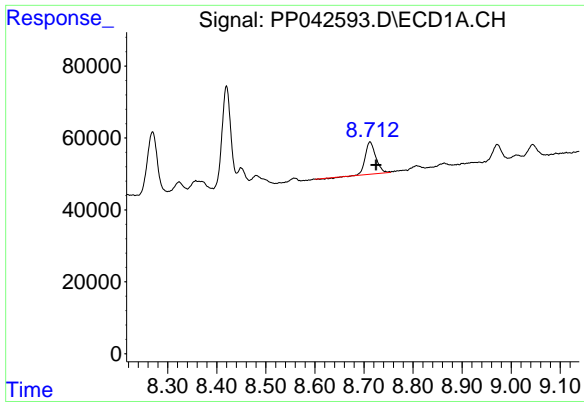
#33 AR-1260-3

R.T.: 8.481 min
 Delta R.T.: -0.016 min
 Response: 45686
 Conc: 82.46 ng/ml



#33 AR-1260-3

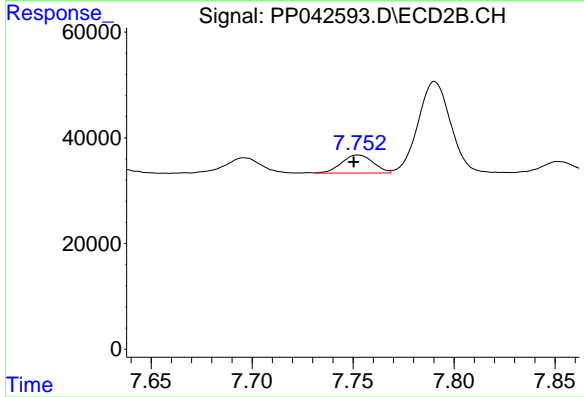
R.T.: 7.266 min
 Delta R.T.: 0.001 min
 Response: 378625
 Conc: 264.83 ng/ml



#34 AR-1260-4

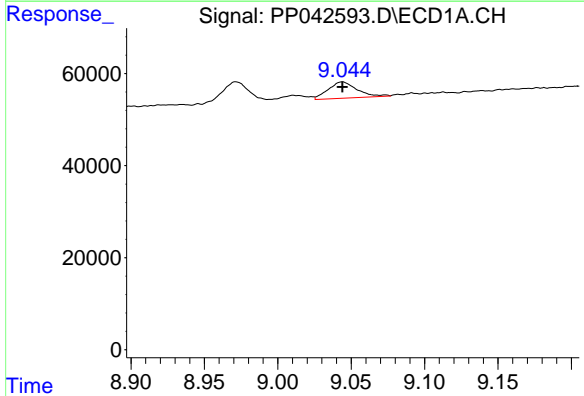
R.T.: 8.712 min
 Delta R.T.: -0.012 min
 Response: 129704
 Conc: 196.60 ng/ml

Instrument :
 ECD_P
 ClientSampleId :



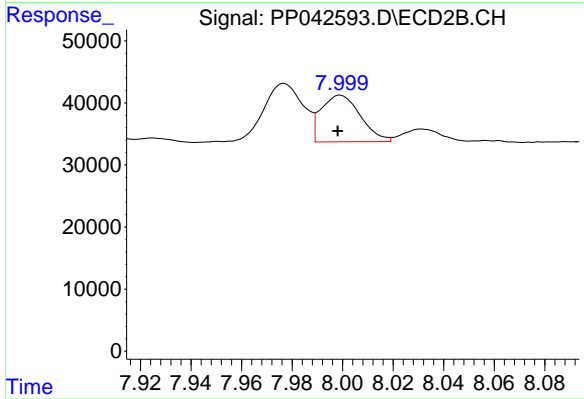
#34 AR-1260-4

R.T.: 7.752 min
 Delta R.T.: 0.002 min
 Response: 36957
 Conc: 33.57 ng/ml



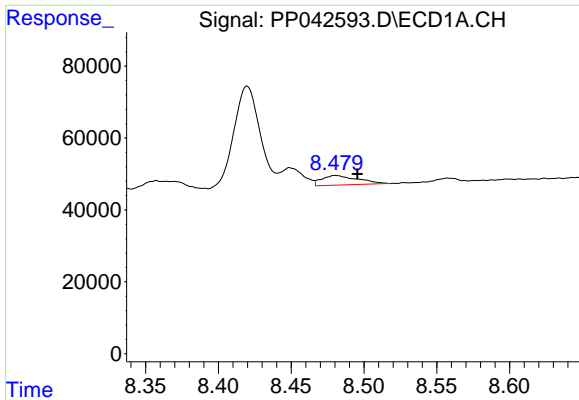
#35 AR-1260-5

R.T.: 9.044 min
 Delta R.T.: 0.000 min
 Response: 48332
 Conc: 40.07 ng/ml



#35 AR-1260-5

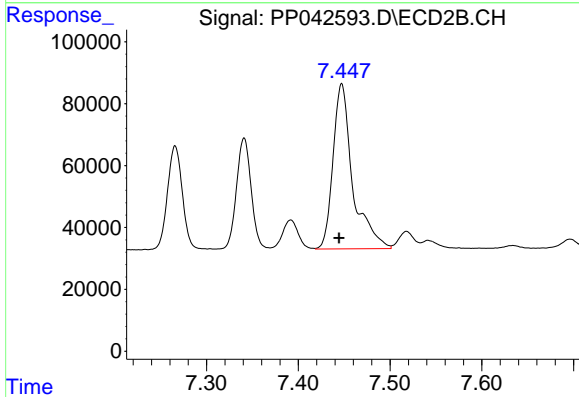
R.T.: 7.999 min
 Delta R.T.: 0.001 min
 Response: 80876
 Conc: 33.51 ng/ml



#36 AR-1262-1

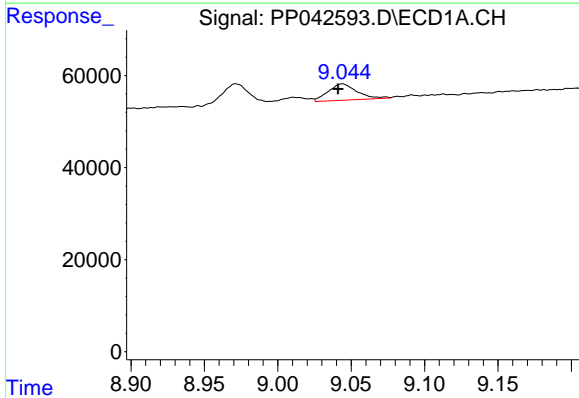
R.T.: 8.481 min
 Delta R.T.: -0.015 min
 Response: 45686
 Conc: 58.36 ng/ml

Instrument :
 ECD_P
 ClientSampleId :



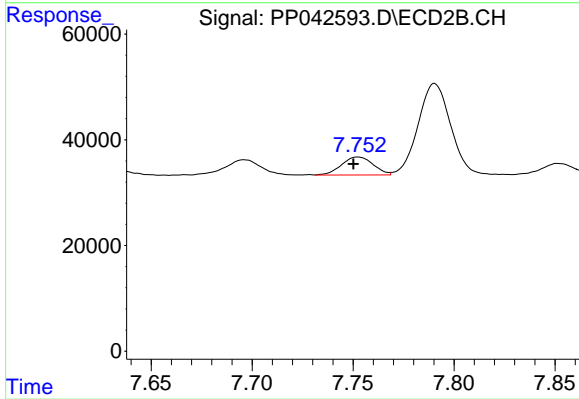
#36 AR-1262-1

R.T.: 7.447 min
 Delta R.T.: 0.003 min
 Response: 795502
 Conc: 916.40 ng/ml



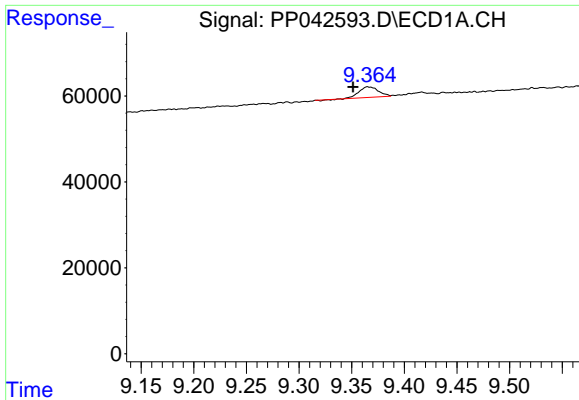
#37 AR-1262-2

R.T.: 9.044 min
 Delta R.T.: 0.003 min
 Response: 48332
 Conc: 36.14 ng/ml



#37 AR-1262-2

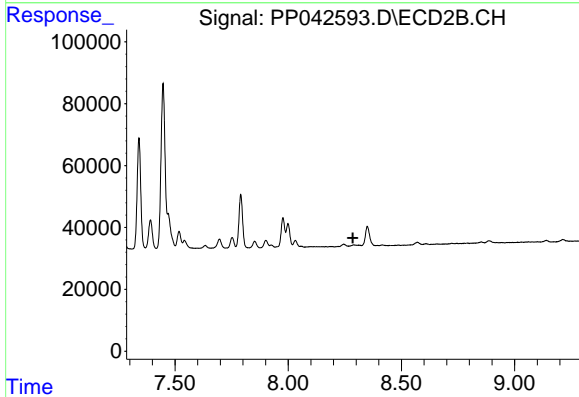
R.T.: 7.752 min
 Delta R.T.: 0.002 min
 Response: 36957
 Conc: 26.66 ng/ml



#38 AR-1262-3

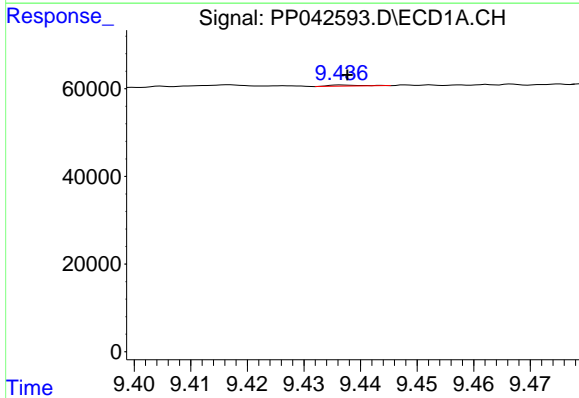
R.T.: 9.366 min
 Delta R.T.: 0.014 min
 Response: 31083
 Conc: 47.16 ng/ml

Instrument :
 ECD_P
 ClientSampleId :



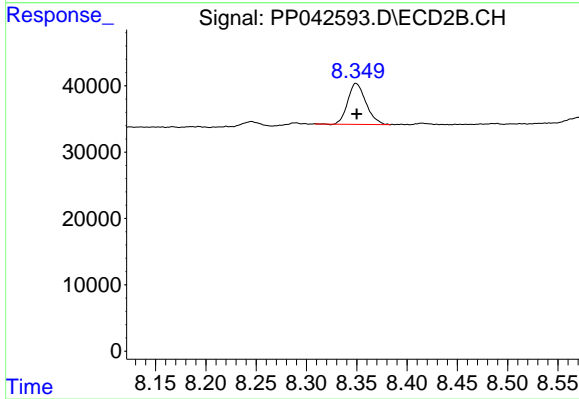
#38 AR-1262-3

R.T.: 0.000 min
 Exp R.T. : 8.286 min
 Response: 0
 Conc: N.D.



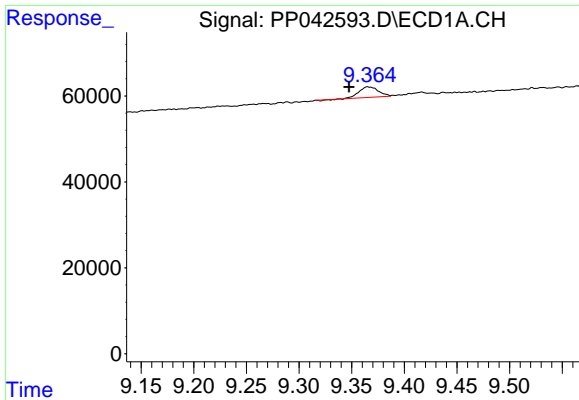
#39 AR-1262-4

R.T.: 9.437 min
 Delta R.T.: 0.000 min
 Response: 964
 Conc: 1.99 ng/ml



#39 AR-1262-4

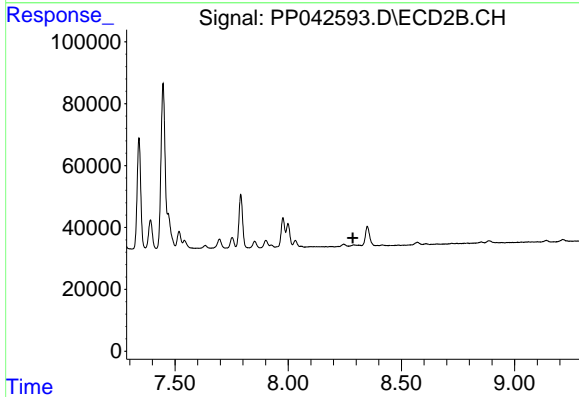
R.T.: 8.349 min
 Delta R.T.: 0.000 min
 Response: 77966
 Conc: 40.45 ng/ml



#41 AR-1268-1

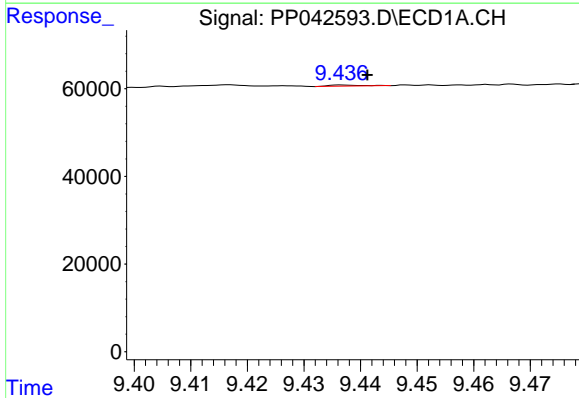
R.T.: 9.366 min
 Delta R.T.: 0.018 min
 Response: 31083
 Conc: 19.00 ng/ml

Instrument :
 ECD_P
 ClientSampleId :



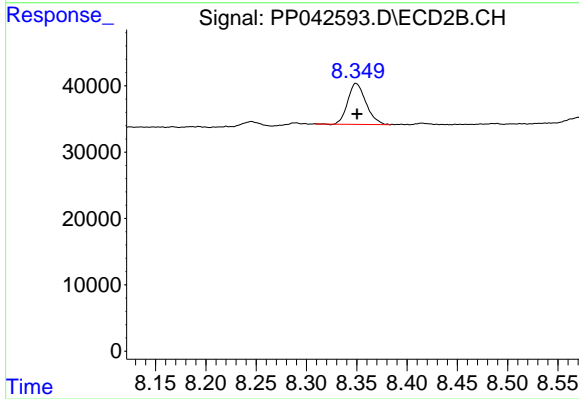
#41 AR-1268-1

R.T.: 0.000 min
 Exp R.T. : 8.286 min
 Response: 0
 Conc: N.D.



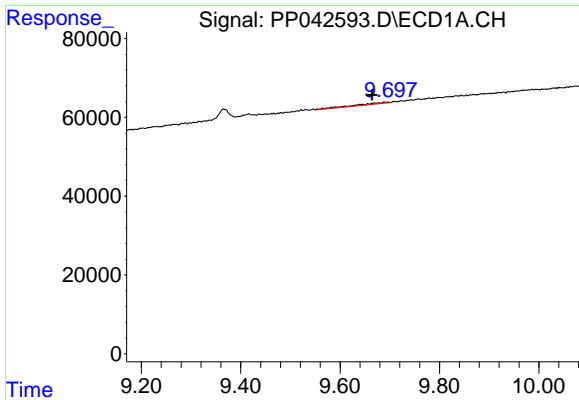
#42 AR-1268-2

R.T.: 9.437 min
 Delta R.T.: -0.004 min
 Response: 964
 Conc: 0.64 ng/ml



#42 AR-1268-2

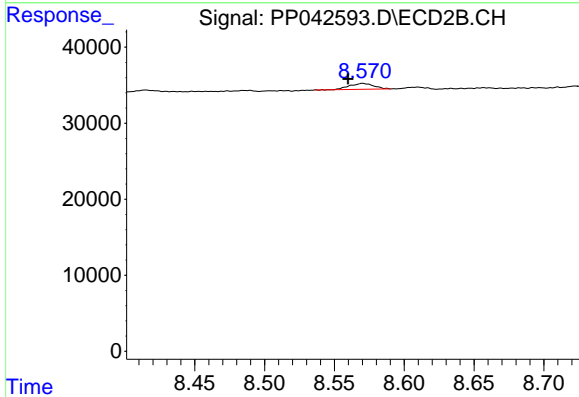
R.T.: 8.349 min
 Delta R.T.: -0.001 min
 Response: 77966
 Conc: 27.54 ng/ml



#43 AR-1268-3

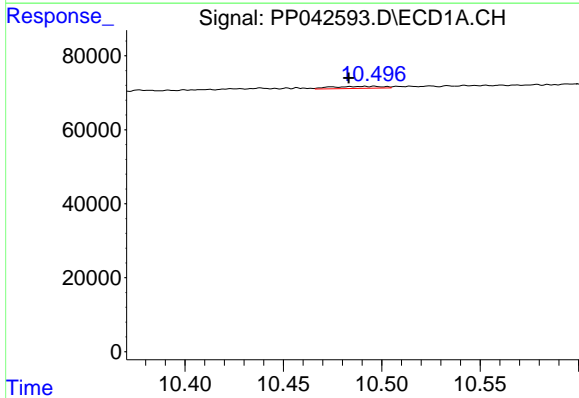
R.T.: 9.690 min
 Delta R.T.: 0.026 min
 Response: 16735
 Conc: 12.43 ng/ml

Instrument :
 ECD_P
 ClientSampleId :



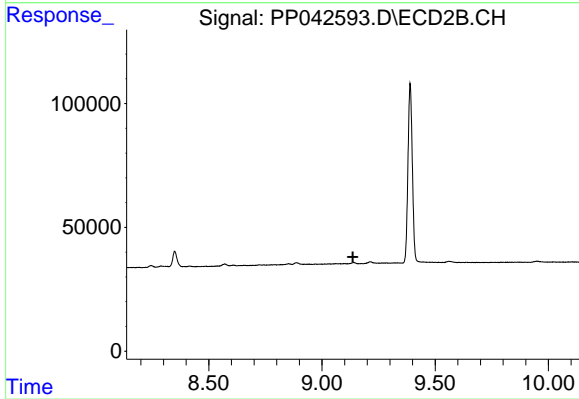
#43 AR-1268-3

R.T.: 8.570 min
 Delta R.T.: 0.011 min
 Response: 9490
 Conc: 3.93 ng/ml



#45 AR-1268-5

R.T.: 10.496 min
 Delta R.T.: 0.013 min
 Response: 9687
 Conc: 2.17 ng/ml



#45 AR-1268-5

R.T.: 0.000 min
 Exp R.T. : 9.137 min
 Response: 0
 Conc: N.D.