

Data Path : Z:\pestpcbsrv\HPCHEM1\ECD\_P\Data\PP010522\  
 Data File : PP042524.D  
 Signal(s) : Signal #1: ECD1A.CH Signal #2: ECD2B.CH  
 Acq On : 05 Jan 2022 9:56  
 Operator : AJ\MA  
 Sample : I.BLK  
 Misc :  
 ALS Vial : 2 Sample Multiplier: 1

Instrument :  
 ECD\_P  
 ClientSampleId :  
 I.BLK

Integration File signal 1: autoint1.e  
 Integration File signal 2: autoint2.e  
 Quant Time: Jan 05 12:53:52 2022  
 Quant Method : Z:\pestpcbsrv\HPCHEM1\ECD\_P\methods\PP010422.M  
 Quant Title : GC EXTRACTABLES  
 QLast Update : Wed Jan 05 12:01:35 2022  
 Response via : Initial Calibration  
 Integrator: ChemStation 6890 Scale Mode: Small noise peaks clipped

Volume Inj. : 2 µl  
 Signal #1 Phase : ZB-MR1 Signal #2 Phase: ZB-MR2  
 Signal #1 Info : 30Mx0.32mmx 0.50µ Signal #2 Info : 30M x 0.32mm x 0.25µm

Compound	RT#1	RT#2	Resp#1	Resp#2	ng/ml	ng/ml
-----						
System Monitoring Compounds						
1) SA Tetrachlo...	4.881	4.048	396044	540338	20.443	20.641
2) SA Decachlor...	10.820	9.389	221373	427844	18.870	21.770

Target Compounds

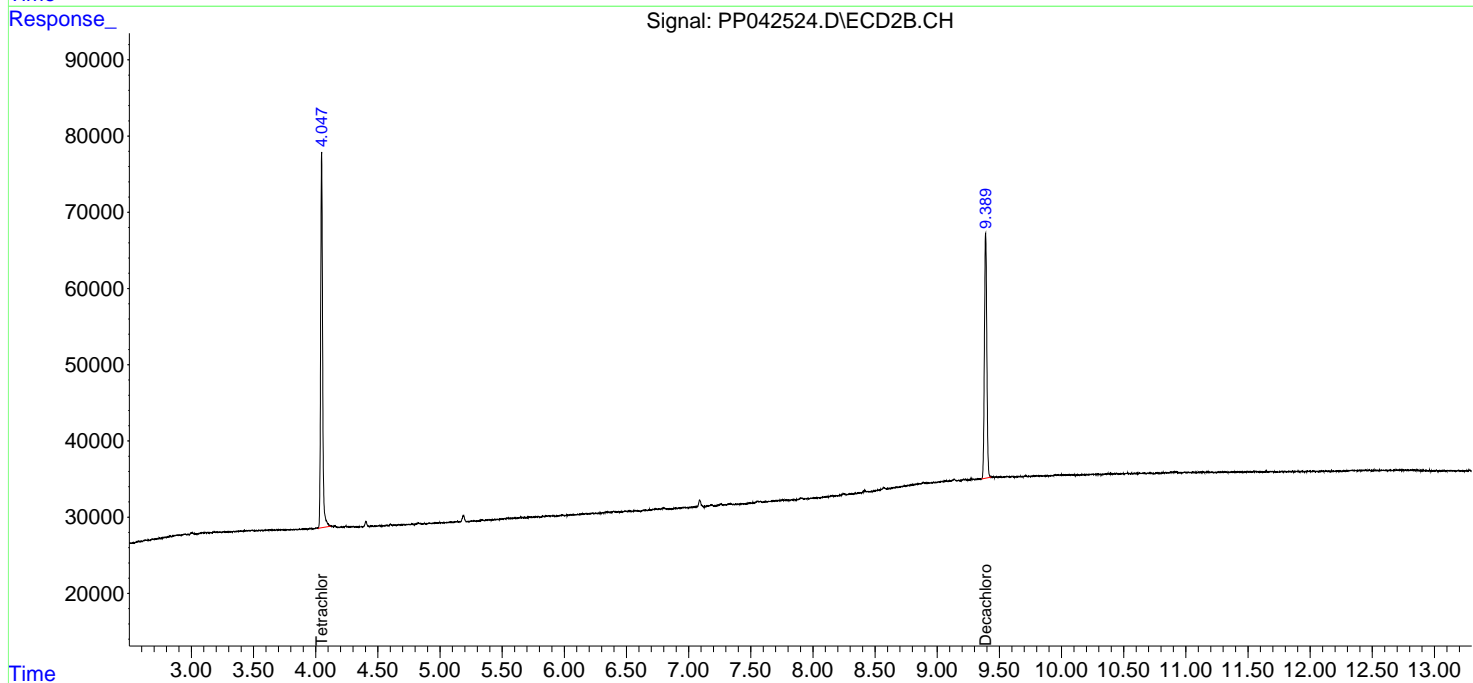
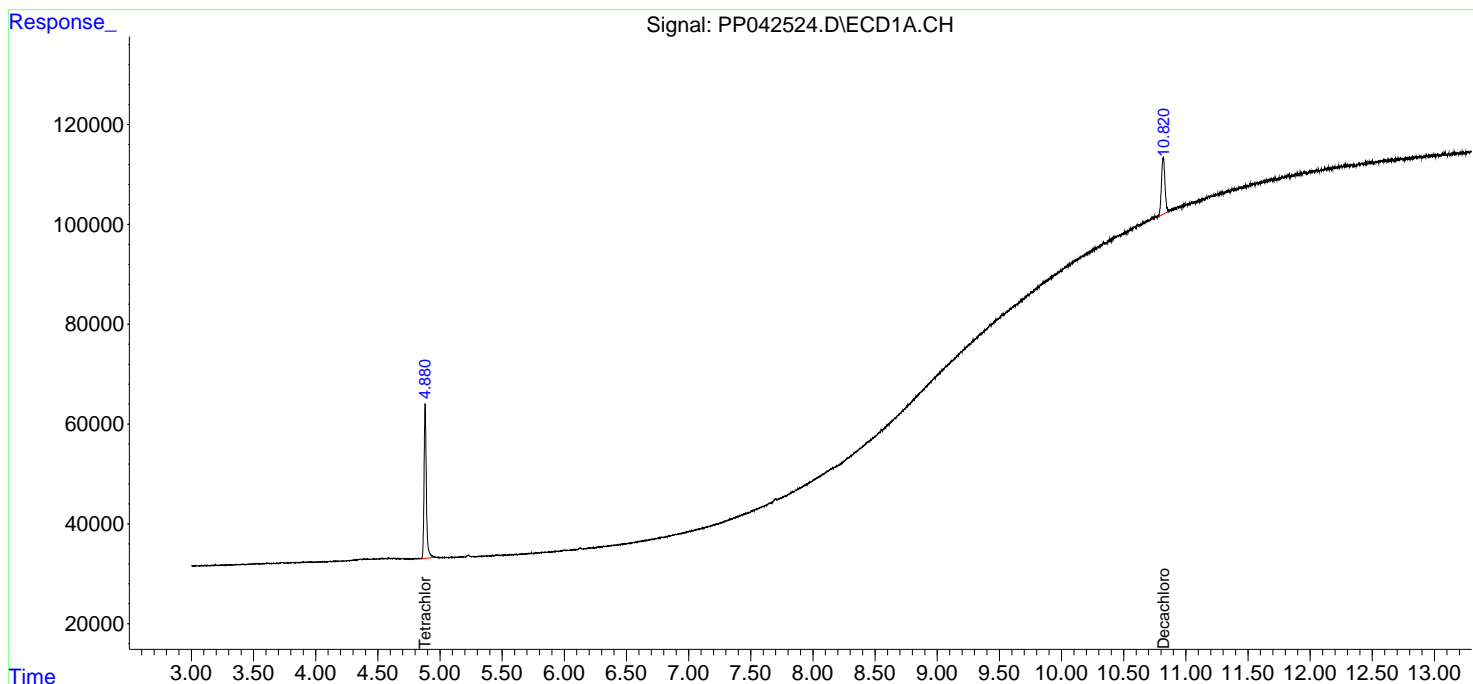
(f)=RT Delta > 1/2 Window (#)=Amounts differ by > 25% (m)=manual int.

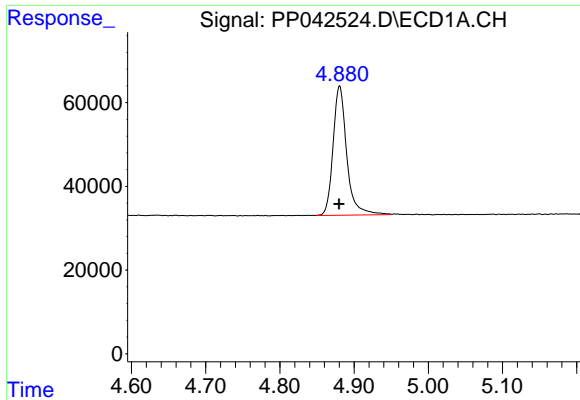
Data Path : Z:\pestpcbsrv\HPCHEM1\ECD\_P\Data\PP010522\  
 Data File : PP042524.D  
 Signal(s) : Signal #1: ECD1A.CH Signal #2: ECD2B.CH  
 Acq On : 05 Jan 2022 9:56  
 Operator : AJ\MA  
 Sample : I.BLK  
 Misc :  
 ALS Vial : 2 Sample Multiplier: 1

Instrument :  
 ECD\_P  
 ClientSampleId :  
 I.BLK

Integration File signal 1: autoint1.e  
 Integration File signal 2: autoint2.e  
 Quant Time: Jan 05 12:53:52 2022  
 Quant Method : Z:\pestpcbsrv\HPCHEM1\ECD\_P\methods\PP010422.M  
 Quant Title : GC EXTRACTABLES  
 QLast Update : Wed Jan 05 12:01:35 2022  
 Response via : Initial Calibration  
 Integrator: ChemStation 6890 Scale Mode: Small noise peaks clipped

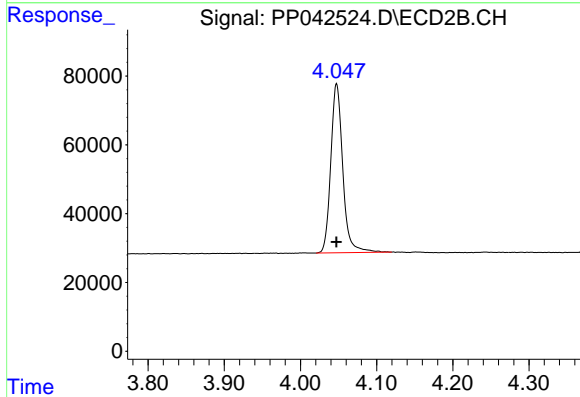
Volume Inj. : 2 µl  
 Signal #1 Phase : ZB-MR1 Signal #2 Phase: ZB-MR2  
 Signal #1 Info : 30Mx0.32mmx 0.50µ Signal #2 Info : 30M x 0.32mm x 0.25µm



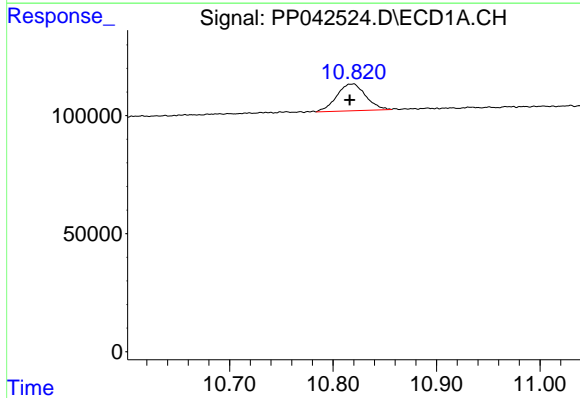


#1 Tetrachloro-m-xylene  
 R.T.: 4.881 min  
 Delta R.T.: 0.000 min  
 Response: 396044  
 Conc: 20.44 ng/ml

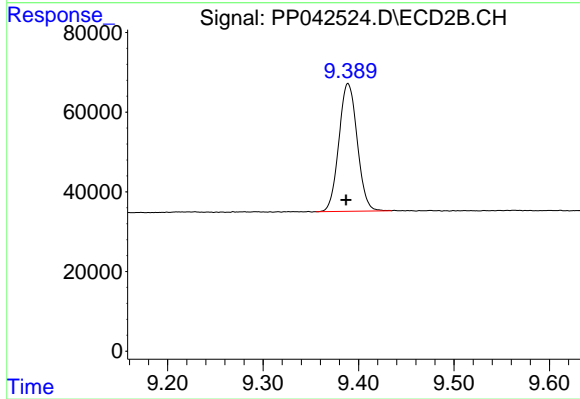
Instrument :  
 ECD\_P  
 ClientSampleId :  
 I.BLK



#1 Tetrachloro-m-xylene  
 R.T.: 4.048 min  
 Delta R.T.: 0.000 min  
 Response: 540338  
 Conc: 20.64 ng/ml



#2 Decachlorobiphenyl  
 R.T.: 10.820 min  
 Delta R.T.: 0.004 min  
 Response: 221373  
 Conc: 18.87 ng/ml



#2 Decachlorobiphenyl  
 R.T.: 9.389 min  
 Delta R.T.: 0.002 min  
 Response: 427844  
 Conc: 21.77 ng/ml