

Data Path : Z:\pestpcbsrv\HPCHEM1\ECD_P\Data\PP010522\
 Data File : PP042529.D
 Signal(s) : Signal #1: ECD1A.CH Signal #2: ECD2B.CH
 Acq On : 05 Jan 2022 11:20
 Operator : AJ\MA
 Sample : AR1242ICCO50
 Misc :
 ALS Vial : 7 Sample Multiplier: 1

Instrument :
 ECD_P
 ClientSampleId :
 AR1242ICCO50

Integration File signal 1: autoint1.e
 Integration File signal 2: autoint2.e
 Quant Time: Jan 05 11:16:26 2022
 Quant Method : Z:\pestpcbsrv\HPCHEM1\ECD_P\methods\PP010422.M
 Quant Title : GC EXTRACTABLES
 QLast Update : Wed Jan 05 10:46:04 2022
 Response via : Initial Calibration
 Integrator: ChemStation 6890 Scale Mode: Small noise peaks clipped

Volume Inj. : 2 µl
 Signal #1 Phase : ZB-MR1 Signal #2 Phase: ZB-MR2
 Signal #1 Info : 30Mx0.32mmx 0.50µ Signal #2 Info : 30M x 0.32mm x 0.25µm

Compound	RT#1	RT#2	Resp#1	Resp#2	ng/ml	ng/ml

System Monitoring Compounds						
1) SA Tetrachlo...	4.881	4.049	88573	131169	4.174	4.757
2) SA Decachlor...	10.822	9.390	57330	108883	4.953	5.312
Target Compounds						
16) L4 AR-1242-1	6.185	5.316	21798	45010	44.837	53.500
17) L4 AR-1242-2	6.209	5.336	30976	59745	44.069	52.755
18) L4 AR-1242-3	6.274	5.531	17351	34922	40.327	53.724 #
19) L4 AR-1242-4	6.379	5.626	15421	33849	43.817	53.345
20) L4 AR-1242-5	7.158	6.193	15869	38032	45.788	50.761

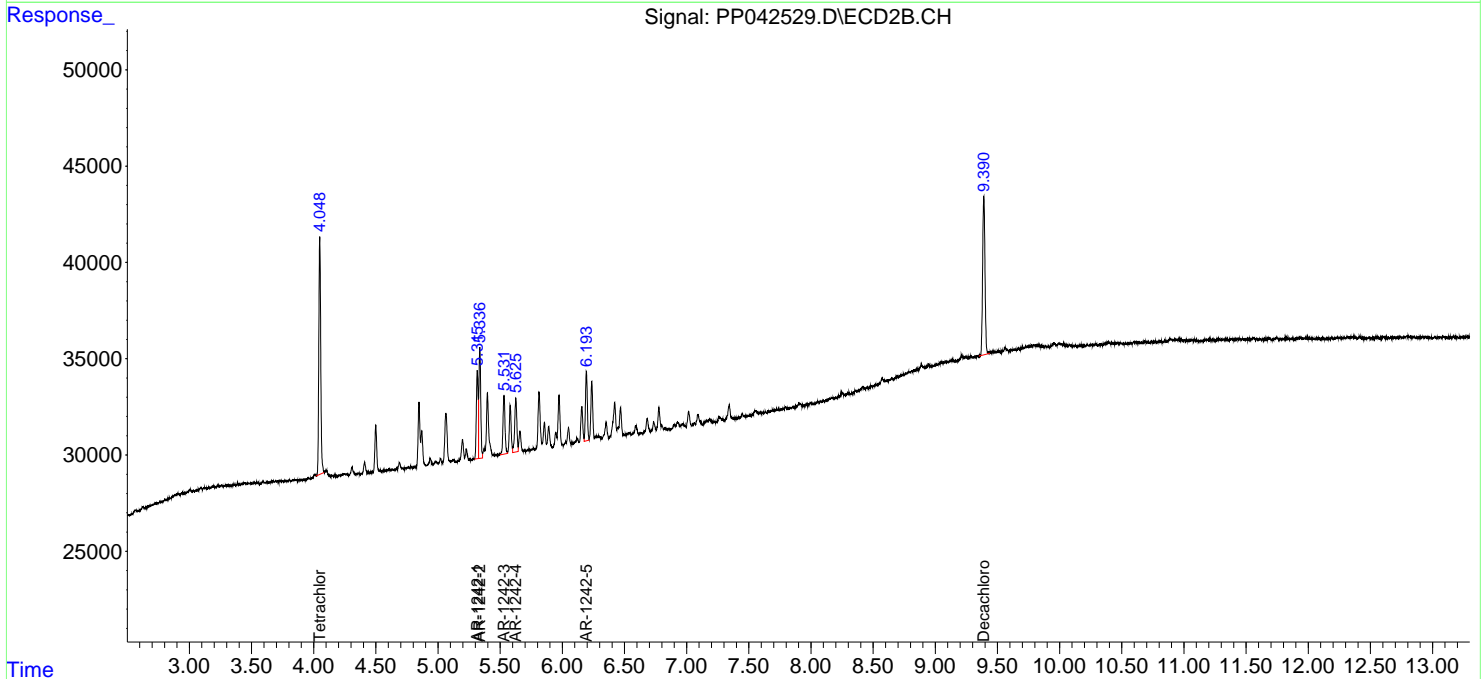
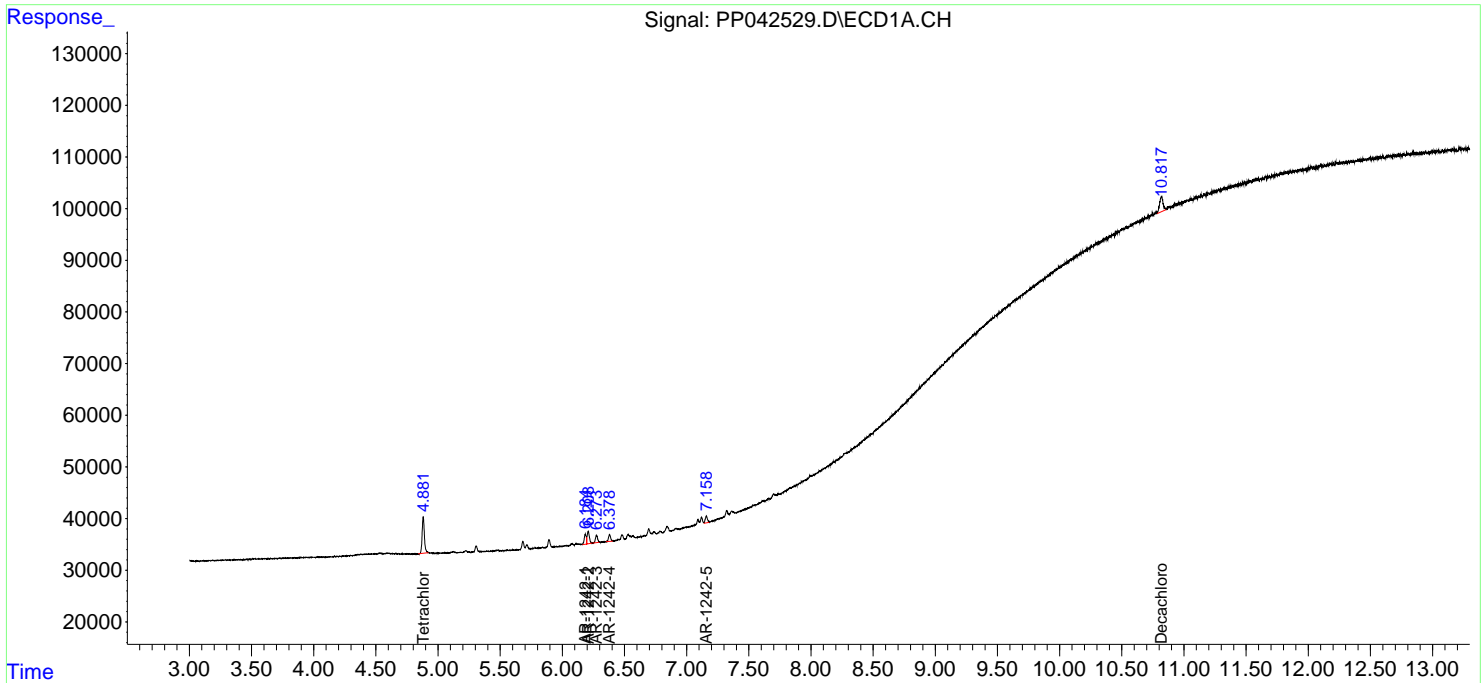
(f)=RT Delta > 1/2 Window (#)=Amounts differ by > 25% (m)=manual int.

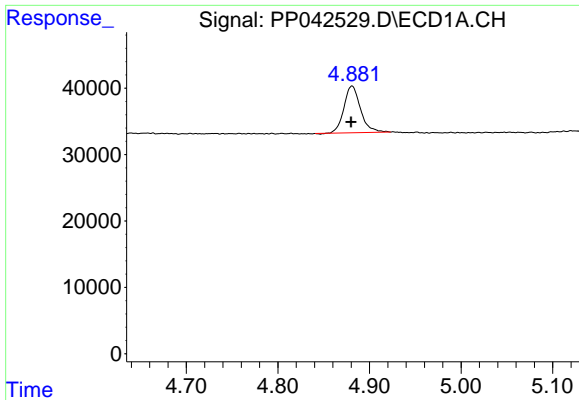
Data Path : Z:\pestpcbsrv\HPCHEM1\ECD_P\Data\PP010522\
 Data File : PP042529.D
 Signal(s) : Signal #1: ECD1A.CH Signal #2: ECD2B.CH
 Acq On : 05 Jan 2022 11:20
 Operator : AJ\MA
 Sample : AR1242IC050
 Misc :
 ALS Vial : 7 Sample Multiplier: 1

Instrument :
 ECD_P
 ClientSampleId :
 AR1242IC050

Integration File signal 1: autoint1.e
 Integration File signal 2: autoint2.e
 Quant Time: Jan 05 11:16:26 2022
 Quant Method : Z:\pestpcbsrv\HPCHEM1\ECD_P\methods\PP010422.M
 Quant Title : GC EXTRACTABLES
 QLast Update : Wed Jan 05 10:46:04 2022
 Response via : Initial Calibration
 Integrator: ChemStation 6890 Scale Mode: Small noise peaks clipped

Volume Inj. : 2 µl
 Signal #1 Phase : ZB-MR1 Signal #2 Phase: ZB-MR2
 Signal #1 Info : 30Mx0.32mmx 0.50µ Signal #2 Info : 30M x 0.32mm x 0.25µm

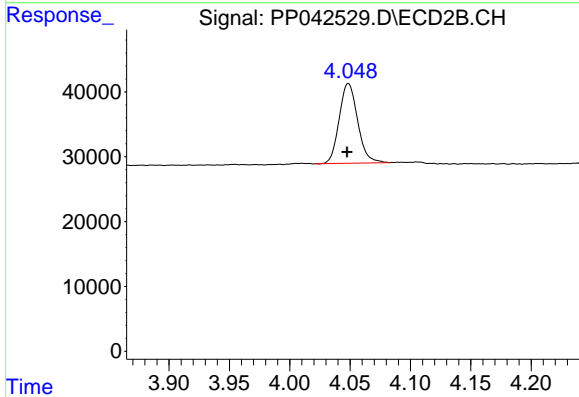




#1 Tetrachloro-m-xylene

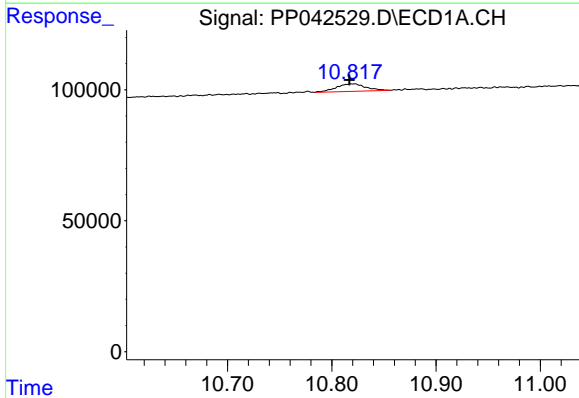
R.T.: 4.881 min
 Delta R.T.: 0.001 min
 Response: 88573
 Conc: 4.17 ng/ml

Instrument :
 ECD_P
 ClientSampleId :
 AR1242ICC050



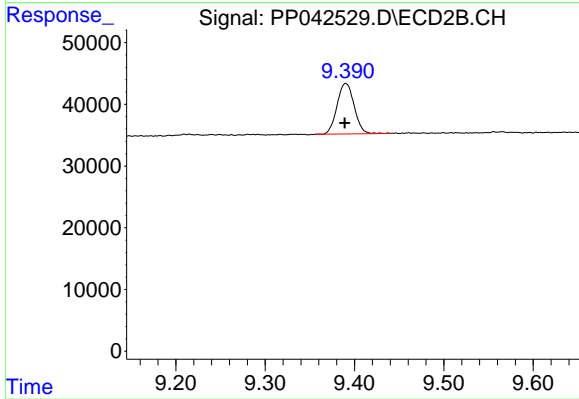
#1 Tetrachloro-m-xylene

R.T.: 4.049 min
 Delta R.T.: 0.001 min
 Response: 131169
 Conc: 4.76 ng/ml



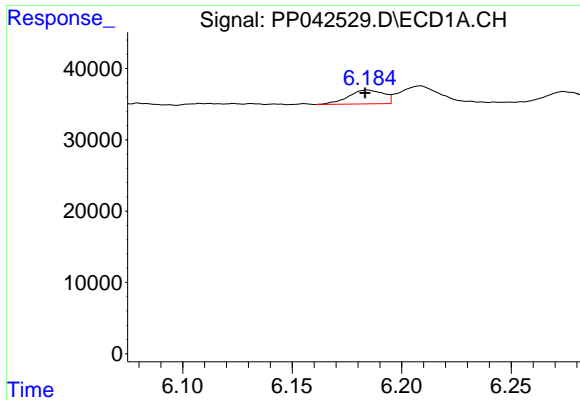
#2 Decachlorobiphenyl

R.T.: 10.822 min
 Delta R.T.: 0.005 min
 Response: 57330
 Conc: 4.95 ng/ml



#2 Decachlorobiphenyl

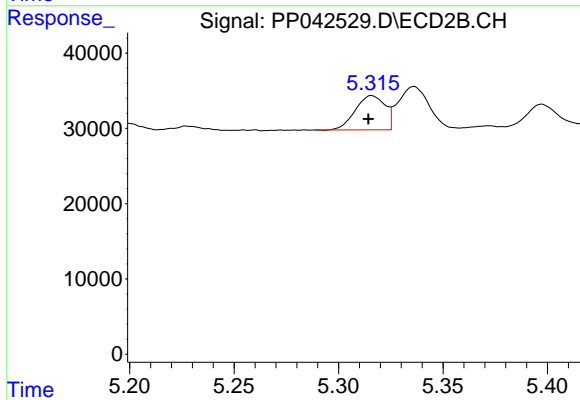
R.T.: 9.390 min
 Delta R.T.: 0.001 min
 Response: 108883
 Conc: 5.31 ng/ml



#16 AR-1242-1

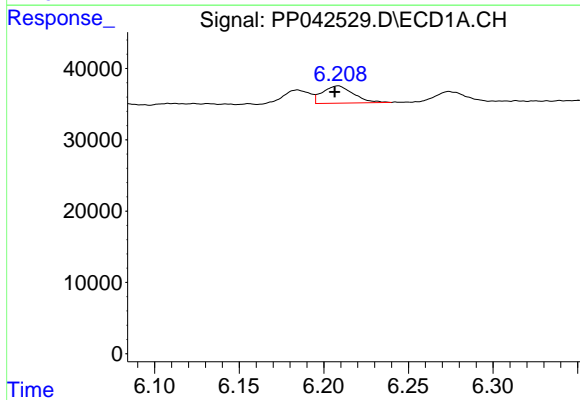
R.T.: 6.185 min
 Delta R.T.: 0.001 min
 Response: 21798
 Conc: 44.84 ng/ml

Instrument :
 ECD_P
 ClientSampleId :
 AR1242ICC050



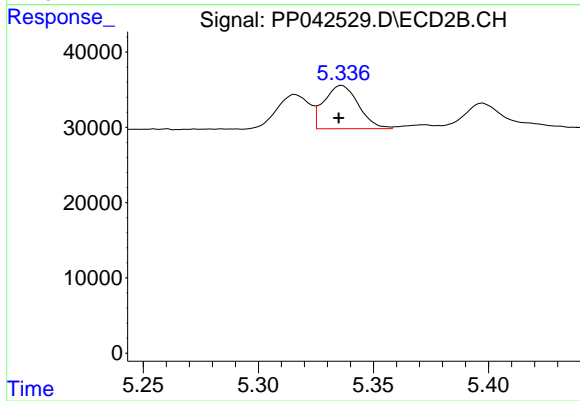
#16 AR-1242-1

R.T.: 5.316 min
 Delta R.T.: 0.001 min
 Response: 45010
 Conc: 53.50 ng/ml



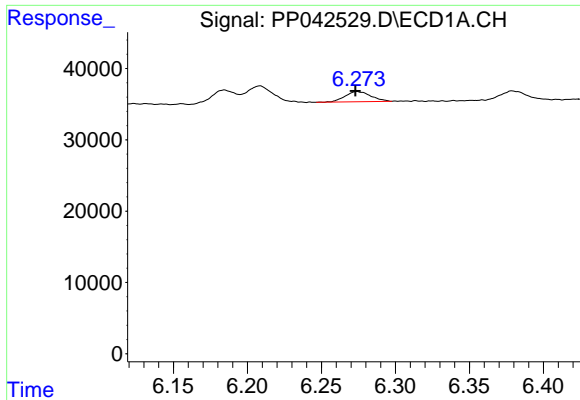
#17 AR-1242-2

R.T.: 6.209 min
 Delta R.T.: 0.002 min
 Response: 30976
 Conc: 44.07 ng/ml



#17 AR-1242-2

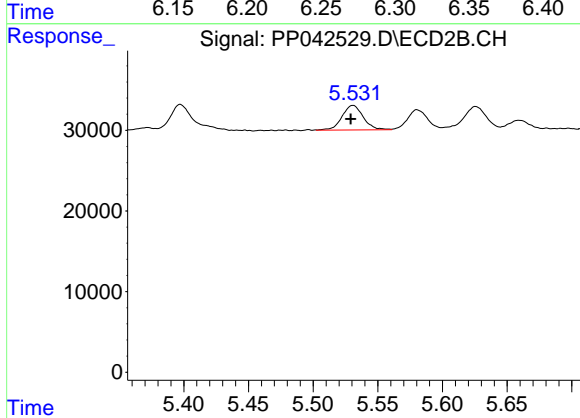
R.T.: 5.336 min
 Delta R.T.: 0.001 min
 Response: 59745
 Conc: 52.76 ng/ml



#18 AR-1242-3

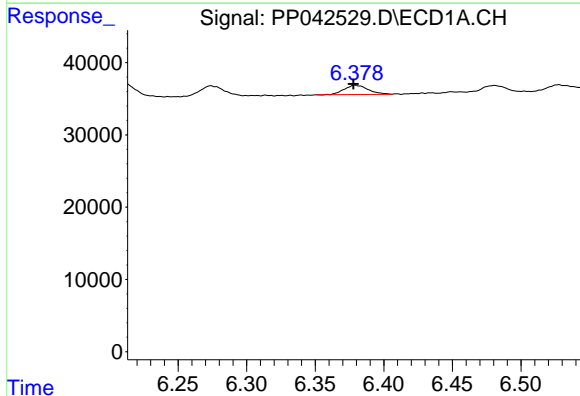
R.T.: 6.274 min
 Delta R.T.: 0.000 min
 Response: 17351
 Conc: 40.33 ng/ml

Instrument :
 ECD_P
 ClientSampleId :
 AR1242ICC050



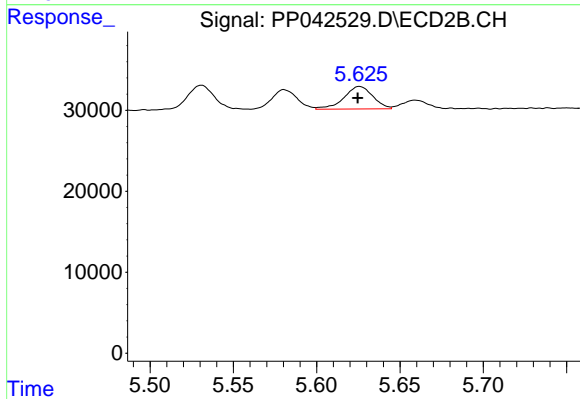
#18 AR-1242-3

R.T.: 5.531 min
 Delta R.T.: 0.002 min
 Response: 34922
 Conc: 53.72 ng/ml



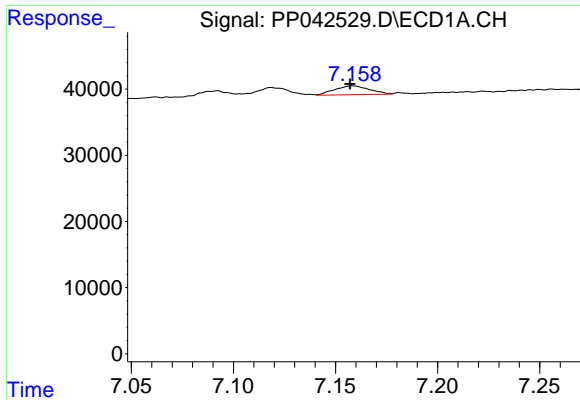
#19 AR-1242-4

R.T.: 6.379 min
 Delta R.T.: 0.001 min
 Response: 15421
 Conc: 43.82 ng/ml



#19 AR-1242-4

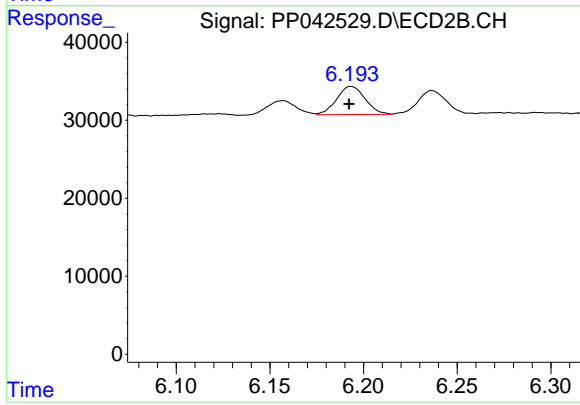
R.T.: 5.626 min
 Delta R.T.: 0.001 min
 Response: 33849
 Conc: 53.35 ng/ml



#20 AR-1242-5

R.T.: 7.158 min
Delta R.T.: 0.001 min
Response: 15869
Conc: 45.79 ng/ml

Instrument :
ECD_P
ClientSampleId :
AR1242ICC050



#20 AR-1242-5

R.T.: 6.193 min
Delta R.T.: 0.000 min
Response: 38032
Conc: 50.76 ng/ml