

Data Path : Z:\pestpcbsrv\HPCHEM1\ECD_P\Data\PP010522\
 Data File : PP042537.D
 Signal(s) : Signal #1: ECD1A.CH Signal #2: ECD2B.CH
 Acq On : 05 Jan 2022 13:33
 Operator : AJ\MA
 Sample : M5337-09
 Misc :
 ALS Vial : 8 Sample Multiplier: 1

Instrument :
 ECD_P
 ClientSampleId :
 WC-1

Integration File signal 1: autoint1.e
 Integration File signal 2: autoint2.e
 Quant Time: Jan 05 13:48:06 2022
 Quant Method : Z:\pestpcbsrv\HPCHEM1\ECD_P\methods\PP010422.M
 Quant Title : GC EXTRACTABLES
 QLast Update : Wed Jan 05 12:01:35 2022
 Response via : Initial Calibration
 Integrator: ChemStation 6890 Scale Mode: Small noise peaks clipped

Volume Inj. : 2 µl
 Signal #1 Phase : ZB-MR1 Signal #2 Phase: ZB-MR2
 Signal #1 Info : 30Mx0.32mmx 0.50µ Signal #2 Info : 30M x 0.32mm x 0.25µm

Compound	RT#1	RT#2	Resp#1	Resp#2	ng/ml	ng/ml

System Monitoring Compounds						
1) SA Tetrachlo...	4.880	4.047	445551	608905	22.998	23.261
2) SA Decachlor...	10.818	9.390	263950	459021	22.499	23.356

Target Compounds

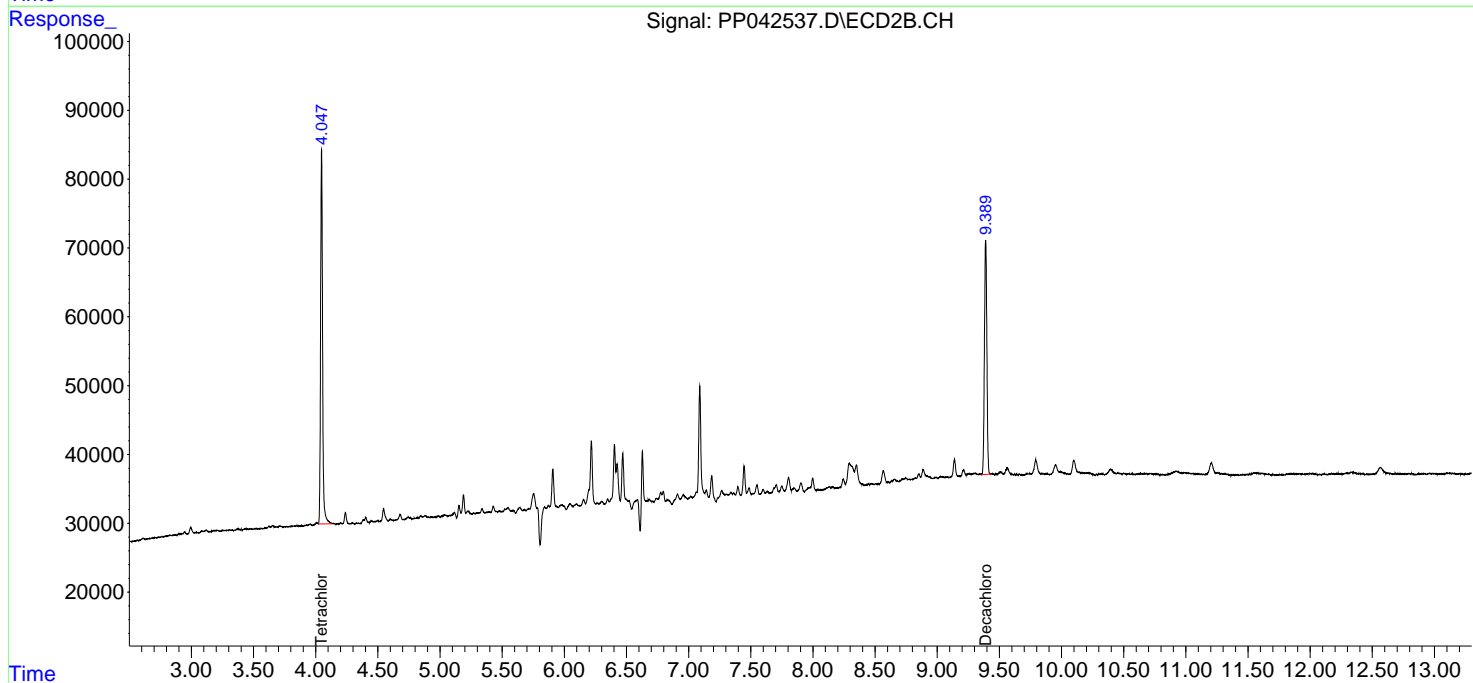
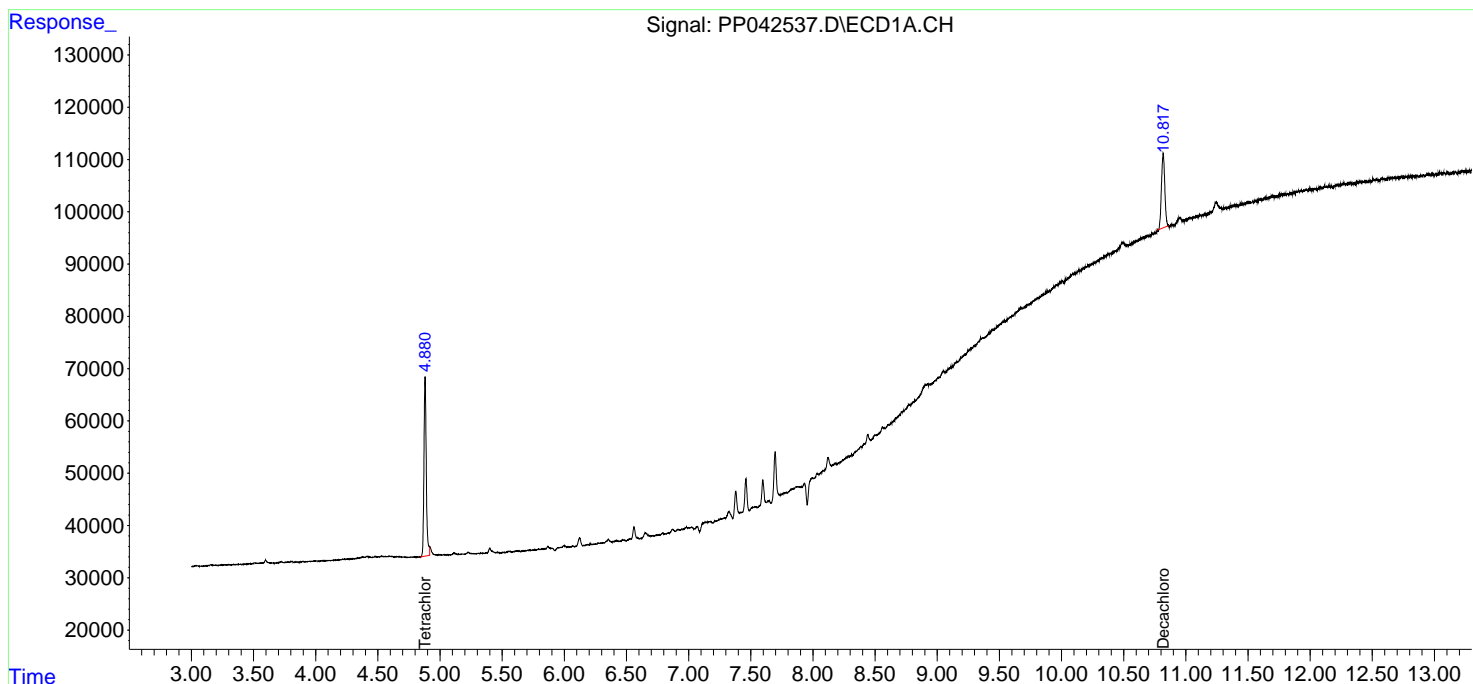
(f)=RT Delta > 1/2 Window (#)=Amounts differ by > 25% (m)=manual int.

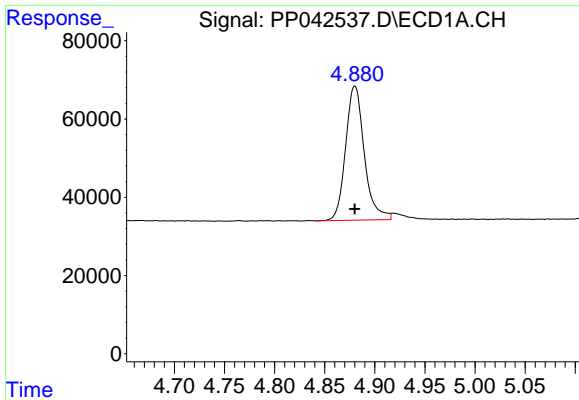
Data Path : Z:\pestpcbsrv\HPCHEM1\ECD_P\Data\PP010522\
 Data File : PP042537.D
 Signal(s) : Signal #1: ECD1A.CH Signal #2: ECD2B.CH
 Acq On : 05 Jan 2022 13:33
 Operator : AJ\MA
 Sample : M5337-09
 Misc :
 ALS Vial : 8 Sample Multiplier: 1

Instrument :
 ECD_P
 ClientSampleId :
 WC-1

Integration File signal 1: autoint1.e
 Integration File signal 2: autoint2.e
 Quant Time: Jan 05 13:48:06 2022
 Quant Method : Z:\pestpcbsrv\HPCHEM1\ECD_P\methods\PP010422.M
 Quant Title : GC EXTRACTABLES
 QLast Update : Wed Jan 05 12:01:35 2022
 Response via : Initial Calibration
 Integrator: ChemStation 6890 Scale Mode: Small noise peaks clipped

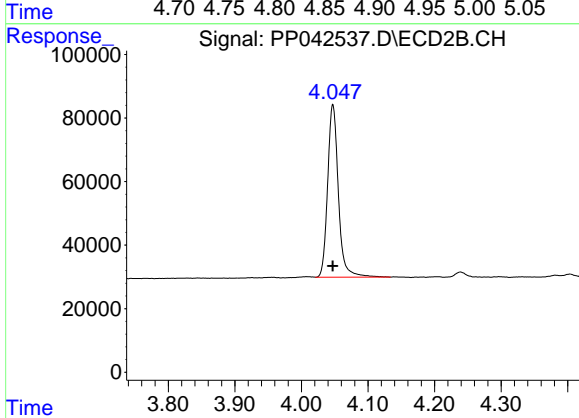
Volume Inj. : 2 µl
 Signal #1 Phase : ZB-MR1 Signal #2 Phase: ZB-MR2
 Signal #1 Info : 30Mx0.32mmx 0.50µm Signal #2 Info : 30M x 0.32mm x 0.25µm



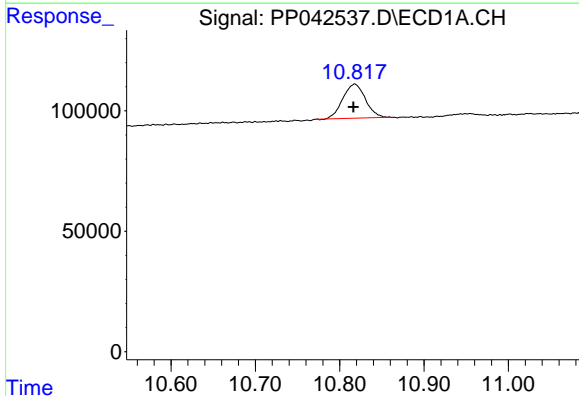


#1 Tetrachloro-m-xylene
 R.T.: 4.880 min
 Delta R.T.: 0.000 min
 Response: 445551
 Conc: 23.00 ng/ml

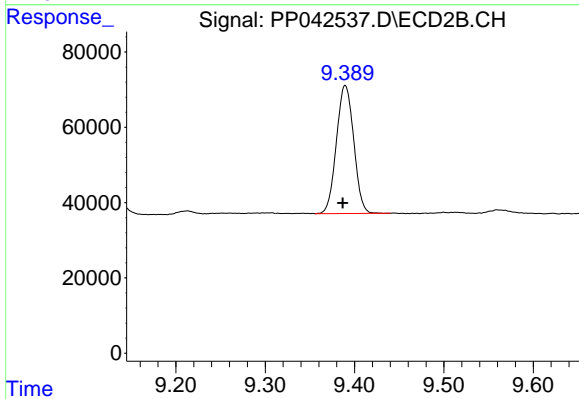
Instrument :
 ECD_P
 ClientSampleId :
 WC-1



#1 Tetrachloro-m-xylene
 R.T.: 4.047 min
 Delta R.T.: 0.000 min
 Response: 608905
 Conc: 23.26 ng/ml



#2 Decachlorobiphenyl
 R.T.: 10.818 min
 Delta R.T.: 0.002 min
 Response: 263950
 Conc: 22.50 ng/ml



#2 Decachlorobiphenyl
 R.T.: 9.390 min
 Delta R.T.: 0.003 min
 Response: 459021
 Conc: 23.36 ng/ml