

Data Path : Z:\pestpcbsrv\HPCHEM1\ECD\_P\Data\PP010522\  
 Data File : PP042570.D  
 Signal(s) : Signal #1: ECD1A.CH Signal #2: ECD2B.CH  
 Acq On : 05 Jan 2022 23:10  
 Operator : AJ\MA  
 Sample : N1005-11  
 Misc :  
 ALS Vial : 31 Sample Multiplier: 1

**Instrument :**  
 ECD\_P  
**ClientSampleId :**  
 RGWD-SB

**Manual Integrations**  
**APPROVED**

Reviewed By :Ankita Jodhani 01/06/2022  
 Supervised By :mohammad ahmed 01/06/2022

Integration File signal 1: autoint1.e  
 Integration File signal 2: autoint2.e  
 Quant Time: Jan 06 02:23:15 2022  
 Quant Method : Z:\pestpcbsrv\HPCHEM1\ECD\_P\methods\PP010422.M  
 Quant Title : GC EXTRACTABLES  
 QLast Update : Wed Jan 05 12:01:35 2022  
 Response via : Initial Calibration  
 Integrator: ChemStation 6890 Scale Mode: Small noise peaks clipped

Volume Inj. : 2 µl  
 Signal #1 Phase : ZB-MR1 Signal #2 Phase: ZB-MR2  
 Signal #1 Info : 30Mx0.32mmx 0.50µ Signal #2 Info : 30M x 0.32mm x 0.25µm

Compound	RT#1	RT#2	Resp#1	Resp#2	ng/ml	ng/ml
-----						
System Monitoring Compounds						
1) SA Tetrachlo...	4.880	4.046	282996	767570	14.608m	29.322 #
2) SA Decachlor...	10.817	9.390	281498	460147	23.995	23.414

Target Compounds

(f)=RT Delta > 1/2 Window (#)=Amounts differ by > 25% (m)=manual int.

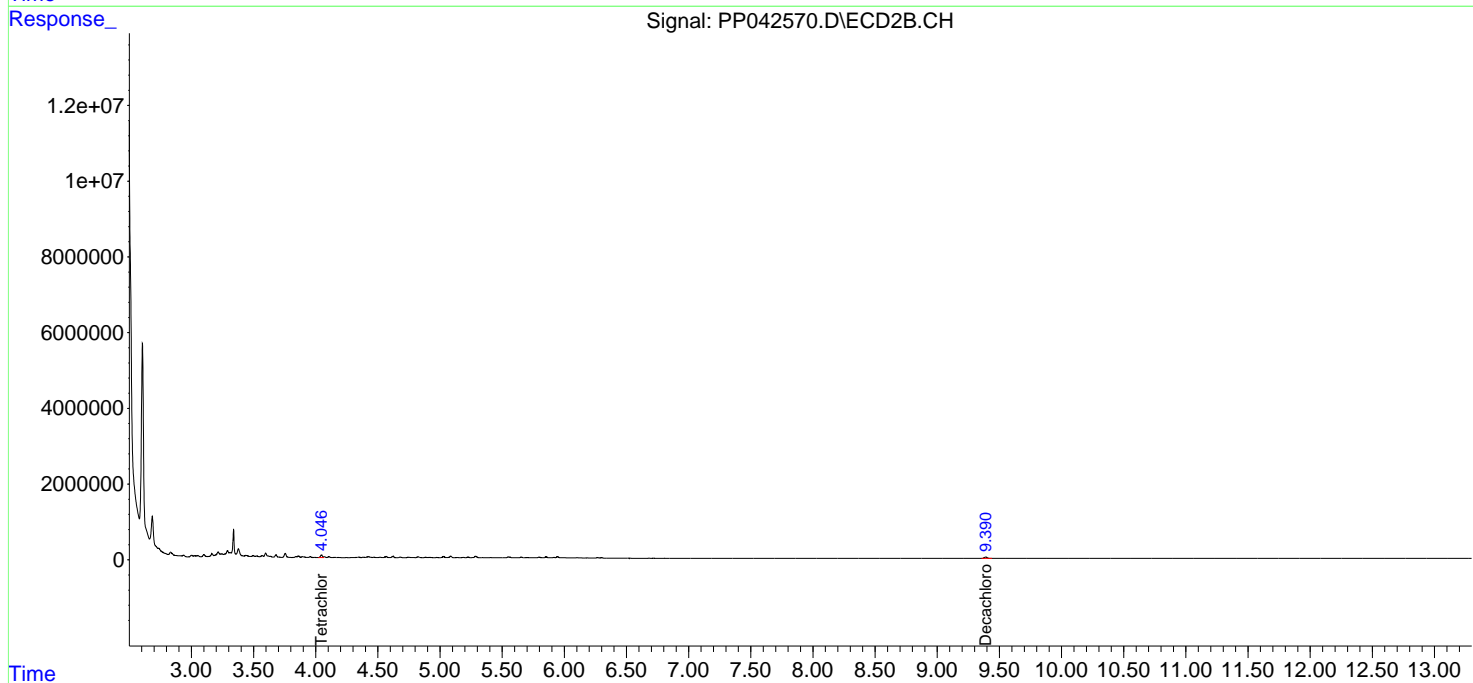
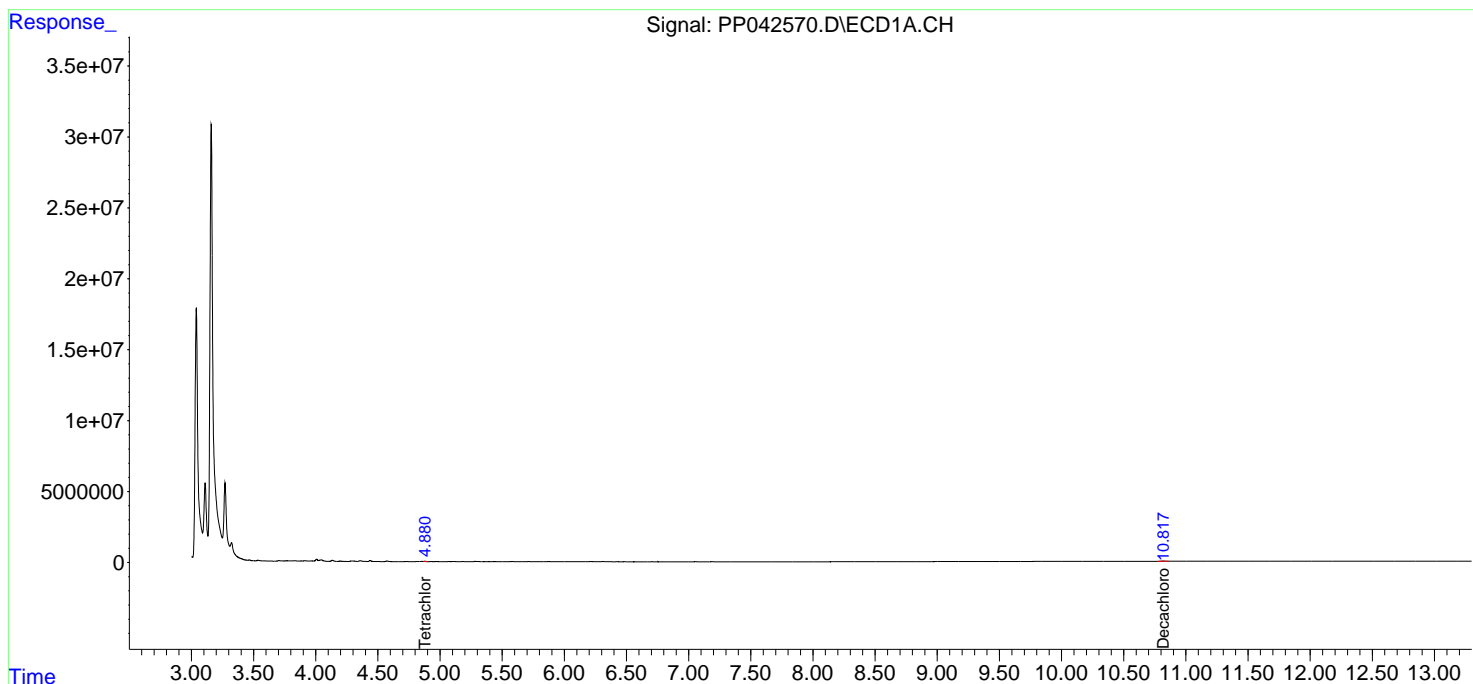
Data Path : Z:\pestpcbsrv\HPCHEM1\ECD\_P\Data\PP010522\  
 Data File : PP042570.D  
 Signal(s) : Signal #1: ECD1A.CH Signal #2: ECD2B.CH  
 Acq On : 05 Jan 2022 23:10  
 Operator : AJ\MA  
 Sample : N1005-11  
 Misc :  
 ALS Vial : 31 Sample Multiplier: 1

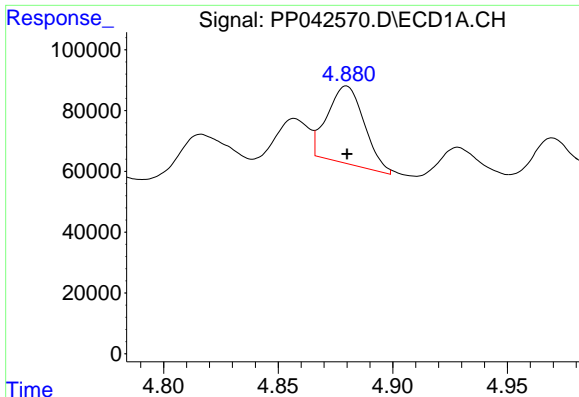
**Instrument :**  
 ECD\_P  
**ClientSampleId :**  
 RGWD-SB

**Manual Integrations**  
**APPROVED**  
 Reviewed By :Ankita Jodhani 01/06/2022  
 Supervised By :mohammad ahmed 01/06/2022

Integration File signal 1: autoint1.e  
 Integration File signal 2: autoint2.e  
 Quant Time: Jan 06 02:23:15 2022  
 Quant Method : Z:\pestpcbsrv\HPCHEM1\ECD\_P\methods\PP010422.M  
 Quant Title : GC EXTRACTABLES  
 QLast Update : Wed Jan 05 12:01:35 2022  
 Response via : Initial Calibration  
 Integrator: ChemStation 6890 Scale Mode: Small noise peaks clipped

Volume Inj. : 2 µl  
 Signal #1 Phase : ZB-MR1 Signal #2 Phase: ZB-MR2  
 Signal #1 Info : 30Mx0.32mmx 0.50µ Signal #2 Info : 30M x 0.32mm x 0.25µm





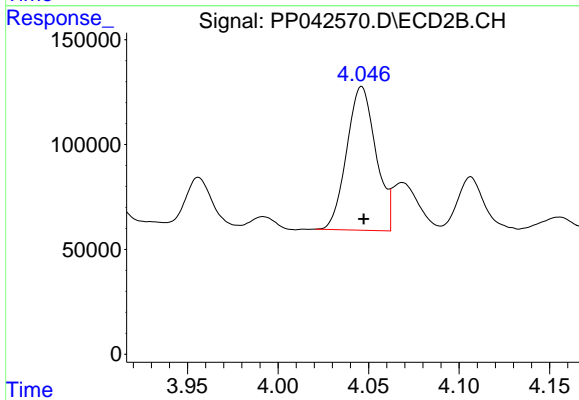
#1 Tetrachloro-m-xylene

R.T.: 4.880 min  
 Delta R.T.: 0.000 min  
 Response: 282996  
 Conc: 14.61 ng/ml

Instrument :  
 ECD\_P  
 ClientSampleId :  
 RGWD-SB

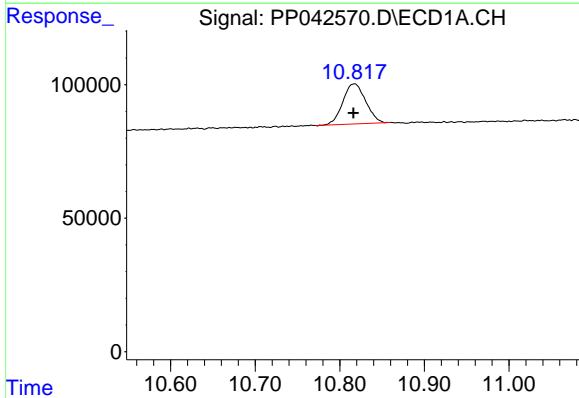
Manual Integrations  
 APPROVED

Reviewed By :Ankita Jodhani 01/06/2022  
 Supervised By :mohammad ahmed 01/06/2022



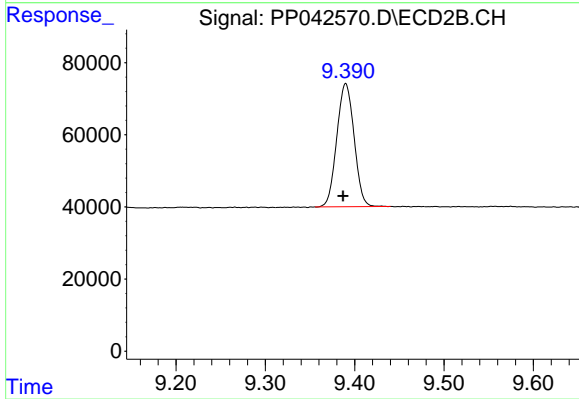
#1 Tetrachloro-m-xylene

R.T.: 4.046 min  
 Delta R.T.: -0.001 min  
 Response: 767570  
 Conc: 29.32 ng/ml



#2 Decachlorobiphenyl

R.T.: 10.817 min  
 Delta R.T.: 0.001 min  
 Response: 281498  
 Conc: 23.99 ng/ml



#2 Decachlorobiphenyl

R.T.: 9.390 min  
 Delta R.T.: 0.003 min  
 Response: 460147  
 Conc: 23.41 ng/ml