

Data Path : Z:\pestpcbsrv\HPCHEM1\ECD_P\Data\PP010522\
 Data File : PP042604.D
 Signal(s) : Signal #1: ECD1A.CH Signal #2: ECD2B.CH
 Acq On : 06 Jan 2022 9:30
 Operator : AJ\MA
 Sample : N1008-06 10X
 Misc :
 ALS Vial : 55 Sample Multiplier: 1

Instrument :
 ECD_P
ClientSampleId :
 SOM-2022-3B

Manual Integrations
APPROVED

Reviewed By :Ankita Jodhani 01/06/2022
 Supervised By :mohammad ahmed 01/10/2022

Integration File signal 1: autoint1.e
 Integration File signal 2: autoint2.e
 Quant Time: Jan 06 13:52:39 2022
 Quant Method : Z:\pestpcbsrv\HPCHEM1\ECD_P\methods\PP010422.M
 Quant Title : GC EXTRACTABLES
 QLast Update : Wed Jan 05 12:01:35 2022
 Response via : Initial Calibration
 Integrator: ChemStation 6890 Scale Mode: Small noise peaks clipped

Volume Inj. : 2 µl
 Signal #1 Phase : ZB-MR1 Signal #2 Phase: ZB-MR2
 Signal #1 Info : 30Mx0.32mmx 0.50µ Signal #2 Info : 30M x 0.32mm x 0.25µm

Compound	RT#1	RT#2	Resp#1	Resp#2	ng/ml	ng/ml

System Monitoring Compounds						
1) SA Tetrachlo...	4.879	4.047	29104	44020	1.502	1.682m
2) SA Decachlor...	10.816	9.390	30255	32930	2.579	1.676m#

Target Compounds

(f)=RT Delta > 1/2 Window (#)=Amounts differ by > 25% (m)=manual int.

Data Path : Z:\pestpcbsrv\HPCHEM1\ECD_P\Data\PP010522\
 Data File : PP042604.D
 Signal(s) : Signal #1: ECD1A.CH Signal #2: ECD2B.CH
 Acq On : 06 Jan 2022 9:30
 Operator : AJ\MA
 Sample : N1008-06 10X
 Misc :
 ALS Vial : 55 Sample Multiplier: 1

Instrument :

ECD_P

ClientSampleId :

SOM-2022-3B

Manual Integrations

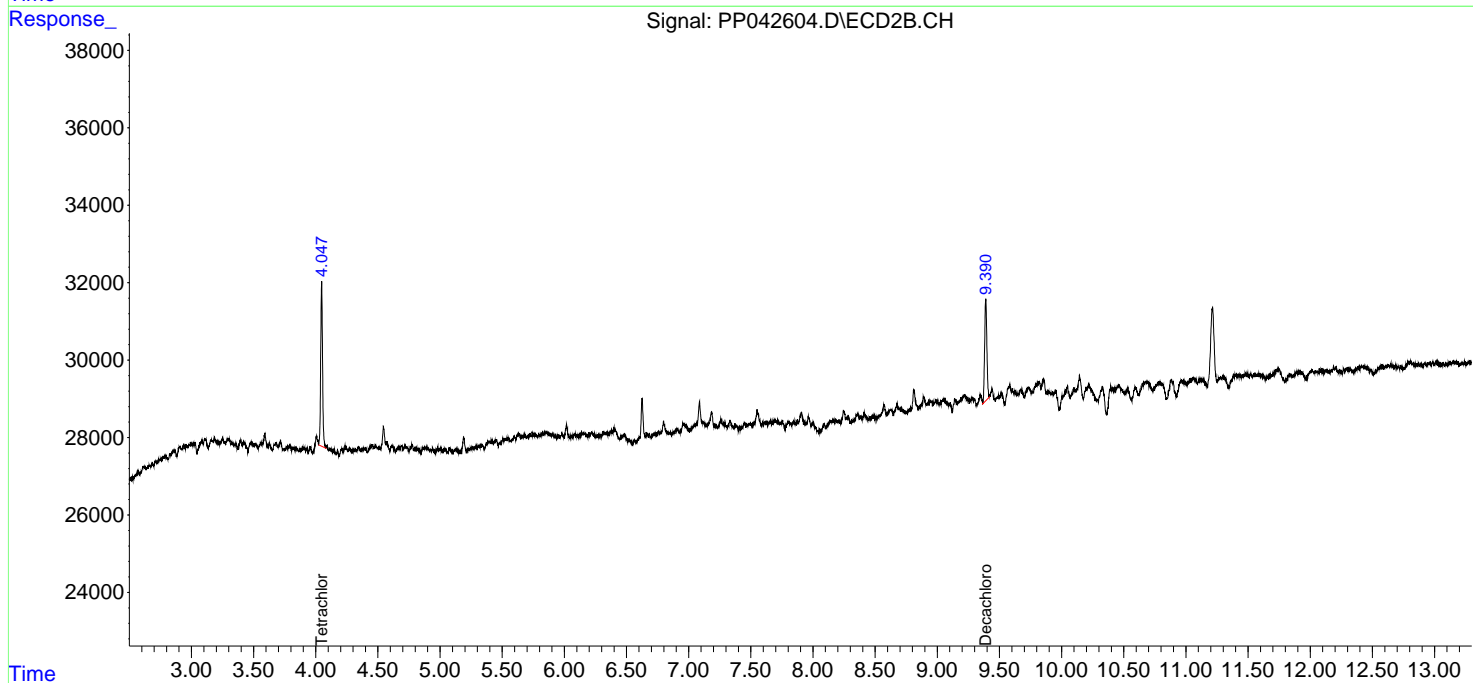
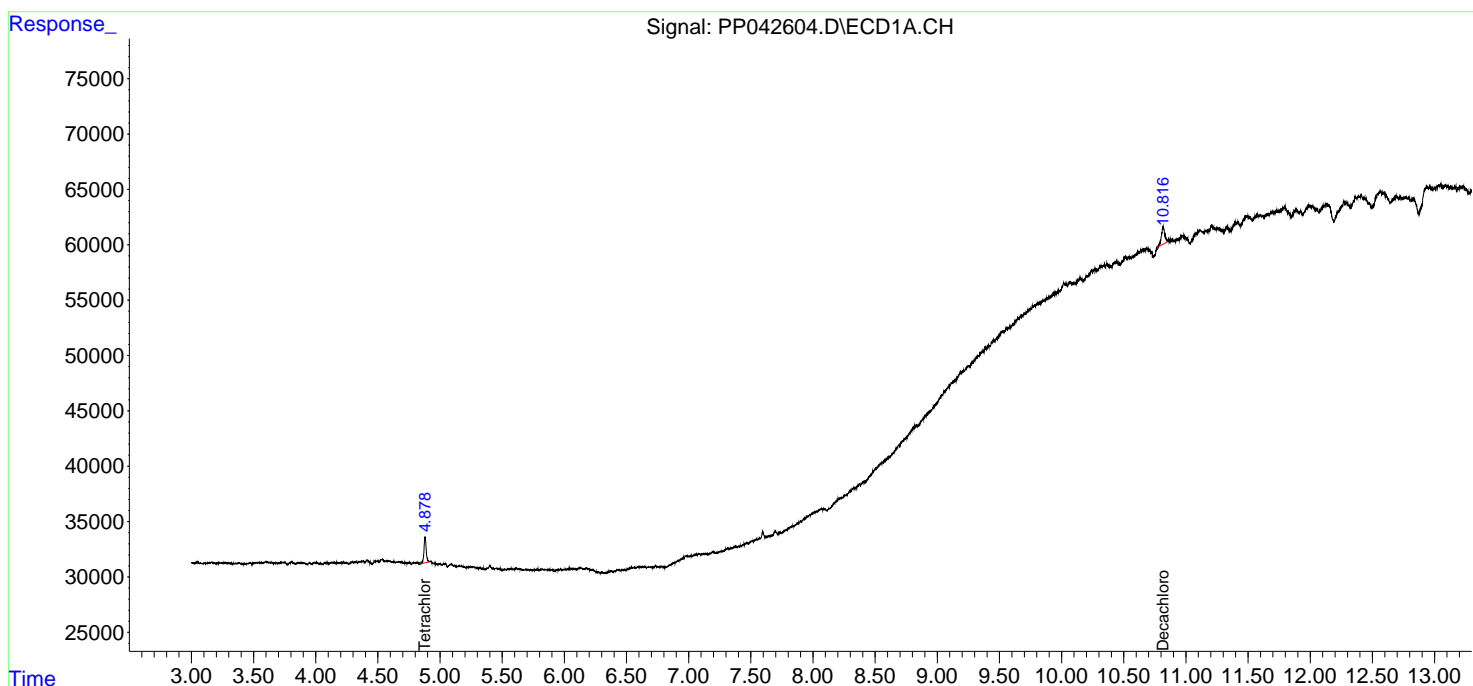
APPROVED

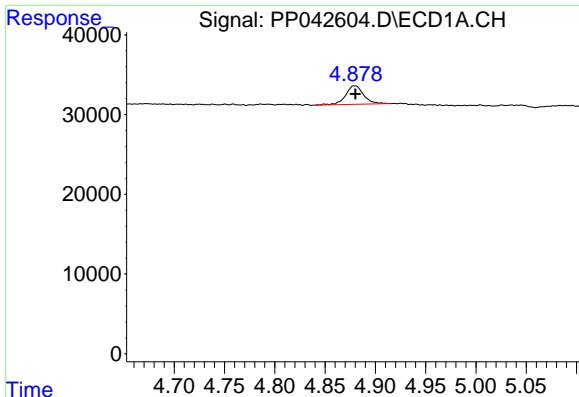
Reviewed By :Ankita Jodhani 01/06/2022

Supervised By :mohammad ahmed 01/10/2022

Integration File signal 1: autoint1.e
 Integration File signal 2: autoint2.e
 Quant Time: Jan 06 13:52:39 2022
 Quant Method : Z:\pestpcbsrv\HPCHEM1\ECD_P\methods\PP010422.M
 Quant Title : GC EXTRACTABLES
 QLast Update : Wed Jan 05 12:01:35 2022
 Response via : Initial Calibration
 Integrator: ChemStation 6890 Scale Mode: Small noise peaks clipped

Volume Inj. : 2 µl
 Signal #1 Phase : ZB-MR1 Signal #2 Phase: ZB-MR2
 Signal #1 Info : 30Mx0.32mmx 0.50µ Signal #2 Info : 30M x 0.32mm x 0.25µm



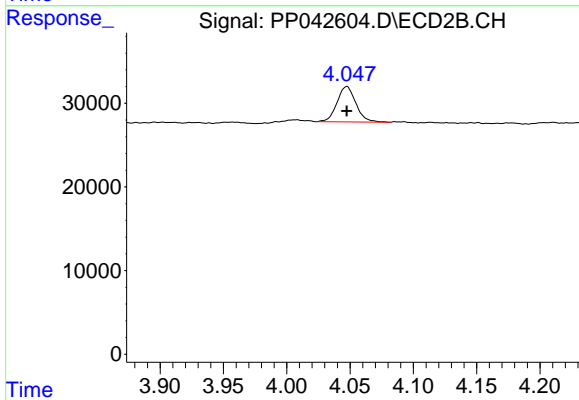


#1 Tetrachloro-m-xylene
 R.T.: 4.879 min
 Delta R.T.: -0.001 min
 Response: 29104
 Conc: 1.50 ng/ml

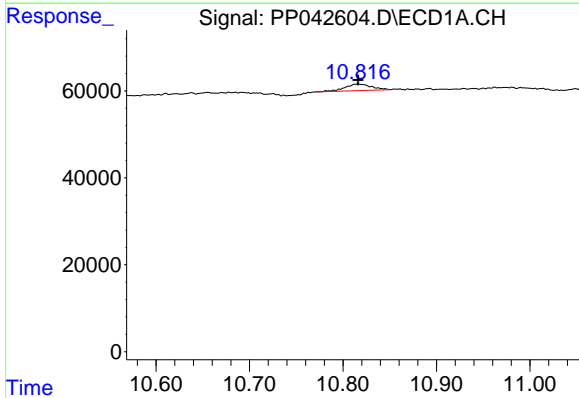
Instrument :
 ECD_P
 ClientSampleId :
 SOM-2022-3B

Manual Integrations
 APPROVED

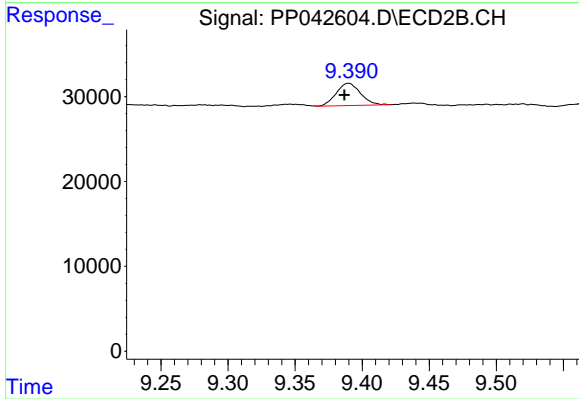
Reviewed By :Ankita Jodhani 01/06/2022
 Supervised By :mohammad ahmed 01/10/2022



#1 Tetrachloro-m-xylene
 R.T.: 4.047 min
 Delta R.T.: 0.000 min
 Response: 44020
 Conc: 1.68 ng/ml m



#2 Decachlorobiphenyl
 R.T.: 10.816 min
 Delta R.T.: 0.000 min
 Response: 30255
 Conc: 2.58 ng/ml



#2 Decachlorobiphenyl
 R.T.: 9.390 min
 Delta R.T.: 0.003 min
 Response: 32930
 Conc: 1.68 ng/ml m