

Data Path : Z:\pestpcbsrv\HPCHEM1\ECD_P\Data\PP010523\
 Data File : PP054288.D
 Signal(s) : Signal #1: ECD1A.ch Signal #2: ECD2B.ch
 Acq On : 05 Jan 2023 11:15
 Operator : YP\AJ
 Sample : 01012-04
 Misc :
 ALS Vial : 13 Sample Multiplier: 1

Instrument :
 ECD_P
ClientSampleId :
 PCB-12322-103-04

Manual Integrations
APPROVED

Reviewed By :Yogesh Patel 01/06/2023
 Supervised By :Ankita Jodhani 01/06/2023

Integration File signal 1: autoint1.e
 Integration File signal 2: autoint2.e
 Quant Time: Jan 06 03:30:57 2023
 Quant Method : Z:\pestpcbsrv\HPCHEM1\ECD_P\methods\PP010423.M
 Quant Title : GC EXTRACTABLES
 QLast Update : Thu Jan 05 03:46:53 2023
 Response via : Initial Calibration
 Integrator: ChemStation

Volume Inj. : 2 µl
 Signal #1 Phase : ZB-MR1 Signal #2 Phase: ZB-MR2
 Signal #1 Info : 30Mx0.32mmx 0.50µ Signal #2 Info : 30M x 0.32mm x 0.25µm

Compound	RT#1	RT#2	Resp#1	Resp#2	ng/ml	ng/ml

System Monitoring Compounds						
1) SA Tetrachlo...	4.337	3.587	49910379	34689225	24.646	21.506
2) SA Decachlor...	10.100	8.612	29620346	30742806	20.624m	21.793

Target Compounds

(f)=RT Delta > 1/2 Window (#)=Amounts differ by > 25% (m)=manual int.

Data Path : Z:\pestpcbsrv\HPCHEM1\ECD_P\Data\PP010523\
 Data File : PP054288.D
 Signal(s) : Signal #1: ECD1A.ch Signal #2: ECD2B.ch
 Acq On : 05 Jan 2023 11:15
 Operator : YP\AJ
 Sample : 01012-04
 Misc :
 ALS Vial : 13 Sample Multiplier: 1

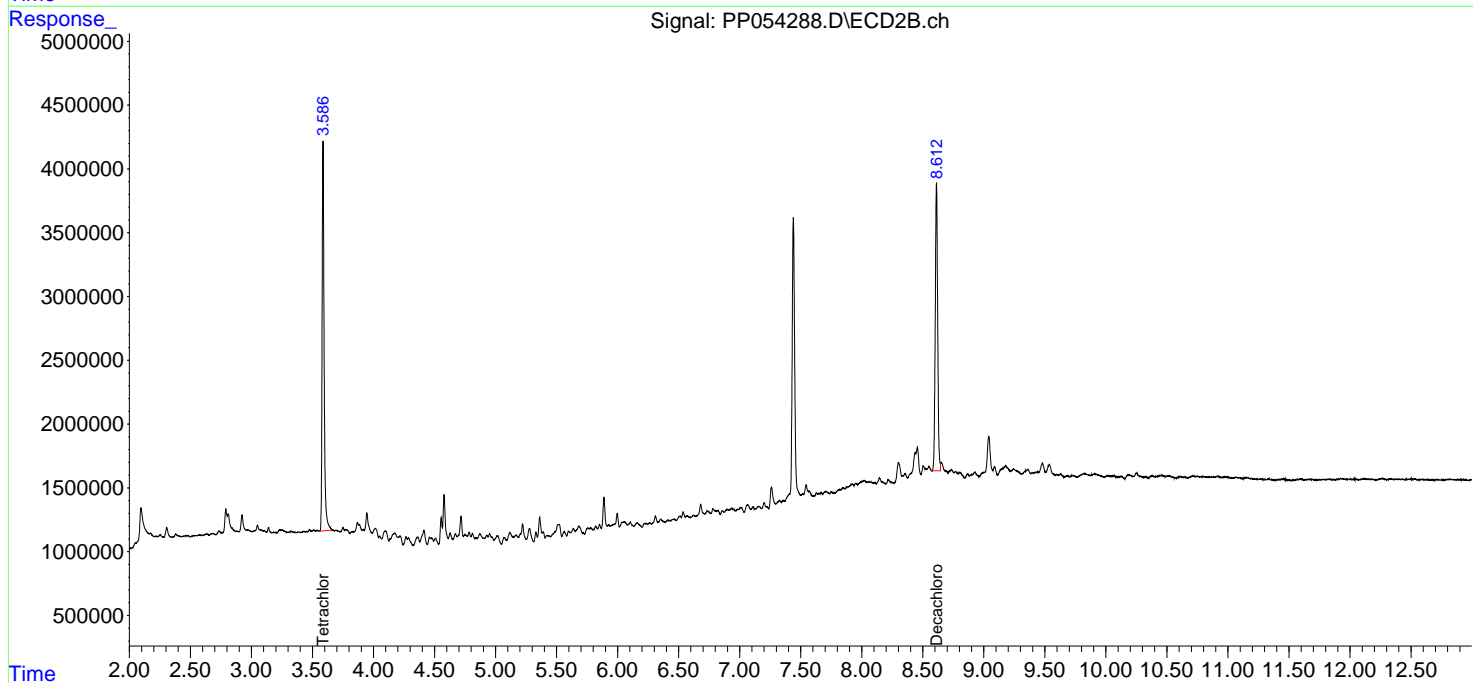
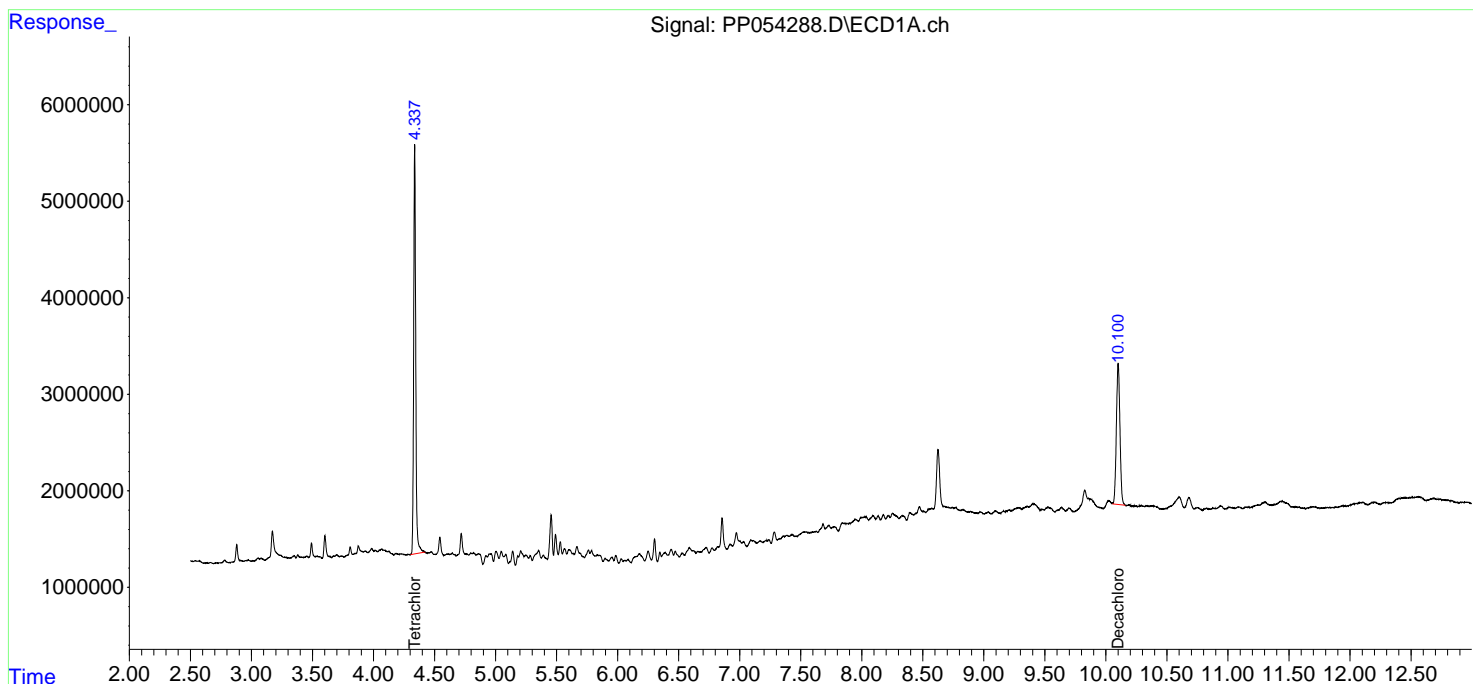
Instrument :
 ECD_P
ClientSampleId :
 PCB-12322-103-04

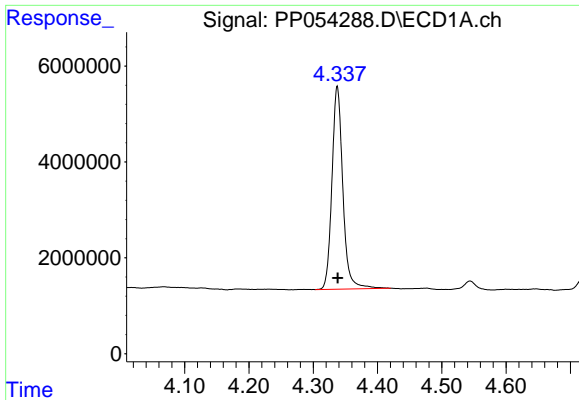
Manual Integrations
APPROVED

Reviewed By :Yogesh Patel 01/06/2023
 Supervised By :Ankita Jodhani 01/06/2023

Integration File signal 1: autoint1.e
 Integration File signal 2: autoint2.e
 Quant Time: Jan 06 03:30:57 2023
 Quant Method : Z:\pestpcbsrv\HPCHEM1\ECD_P\methods\PP010423.M
 Quant Title : GC EXTRACTABLES
 QLast Update : Thu Jan 05 03:46:53 2023
 Response via : Initial Calibration
 Integrator: ChemStation

Volume Inj. : 2 µl
 Signal #1 Phase : ZB-MR1 Signal #2 Phase: ZB-MR2
 Signal #1 Info : 30Mx0.32mmx 0.50µ Signal #2 Info : 30M x 0.32mm x 0.25µm



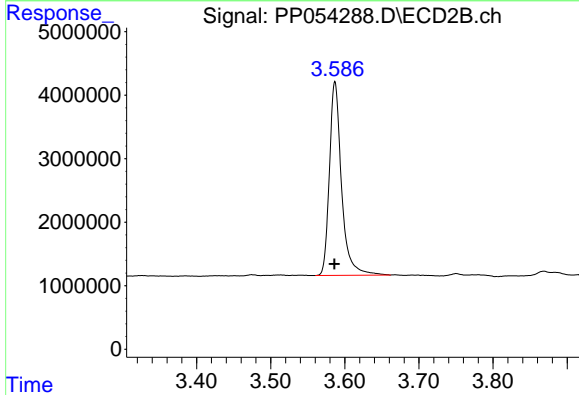


#1 Tetrachloro-m-xylene
 R.T.: 4.337 min
 Delta R.T.: 0.000 min
 Response: 49910379
 Conc: 24.65 ng/ml

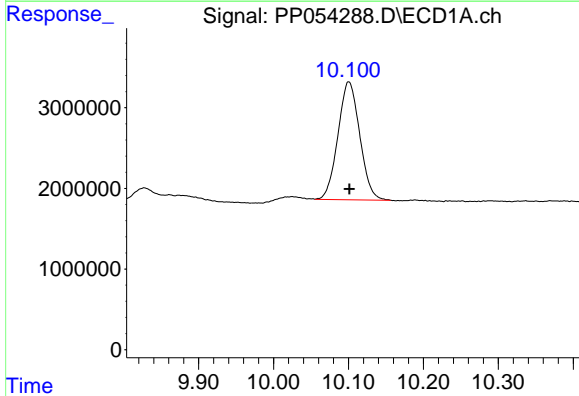
Instrument :
 ECD_P
 ClientSampleId :
 PCB-12322-103-04

Manual Integrations
 APPROVED

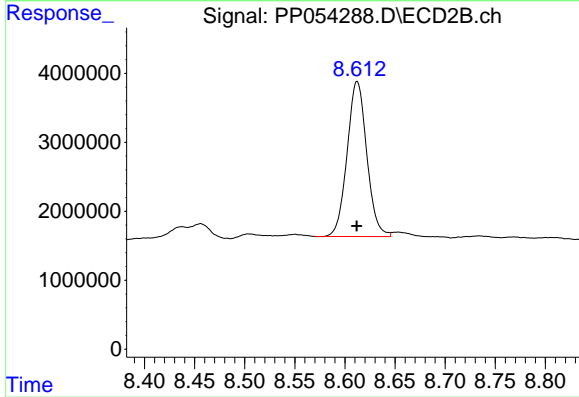
Reviewed By :Yogesh Patel 01/06/2023
 Supervised By :Ankita Jodhani 01/06/2023



#1 Tetrachloro-m-xylene
 R.T.: 3.587 min
 Delta R.T.: 0.000 min
 Response: 34689225
 Conc: 21.51 ng/ml



#2 Decachlorobiphenyl
 R.T.: 10.100 min
 Delta R.T.: -0.002 min
 Response: 29620346
 Conc: 20.62 ng/ml m



#2 Decachlorobiphenyl
 R.T.: 8.612 min
 Delta R.T.: 0.000 min
 Response: 30742806
 Conc: 21.79 ng/ml