

Data Path : Z:\pestpcbsrv\HPCHEM1\ECD\_P\Data\PP010523\  
 Data File : PP054297.D  
 Signal(s) : Signal #1: ECD1A.ch Signal #2: ECD2B.ch  
 Acq On : 06 Jan 2023 01:12  
 Operator : YP\AJ  
 Sample : I.BLK  
 Misc :  
 ALS Vial : 2 Sample Multiplier: 1

Instrument :  
 ECD\_P  
 ClientSampleId :  
 I.BLK

Integration File signal 1: autoint1.e  
 Integration File signal 2: autoint2.e  
 Quant Time: Jan 06 03:41:53 2023  
 Quant Method : Z:\pestpcbsrv\HPCHEM1\ECD\_P\methods\PP010423.M  
 Quant Title : GC EXTRACTABLES  
 QLast Update : Thu Jan 05 03:46:53 2023  
 Response via : Initial Calibration  
 Integrator: ChemStation

Volume Inj. : 2 µl  
 Signal #1 Phase : ZB-MR1 Signal #2 Phase: ZB-MR2  
 Signal #1 Info : 30Mx0.32mmx 0.50µ Signal #2 Info : 30M x 0.32mm x 0.25µm

Compound	RT#1	RT#2	Resp#1	Resp#2	ng/ml	ng/ml
-----						
System Monitoring Compounds						
1) SA Tetrachlo...	4.336	3.585	51020411	36463353	25.194	22.606
2) SA Decachlor...	10.099	8.610	33411232	34589570	23.264	24.520

Target Compounds

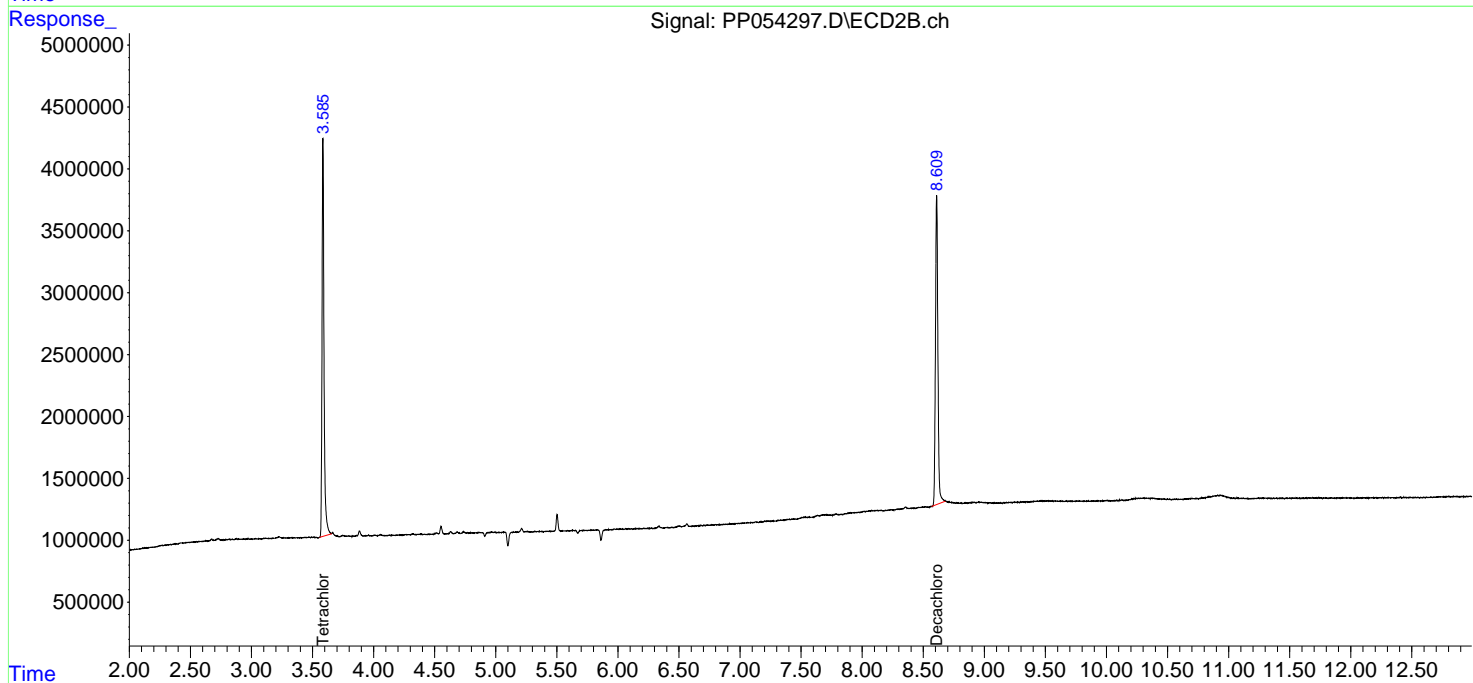
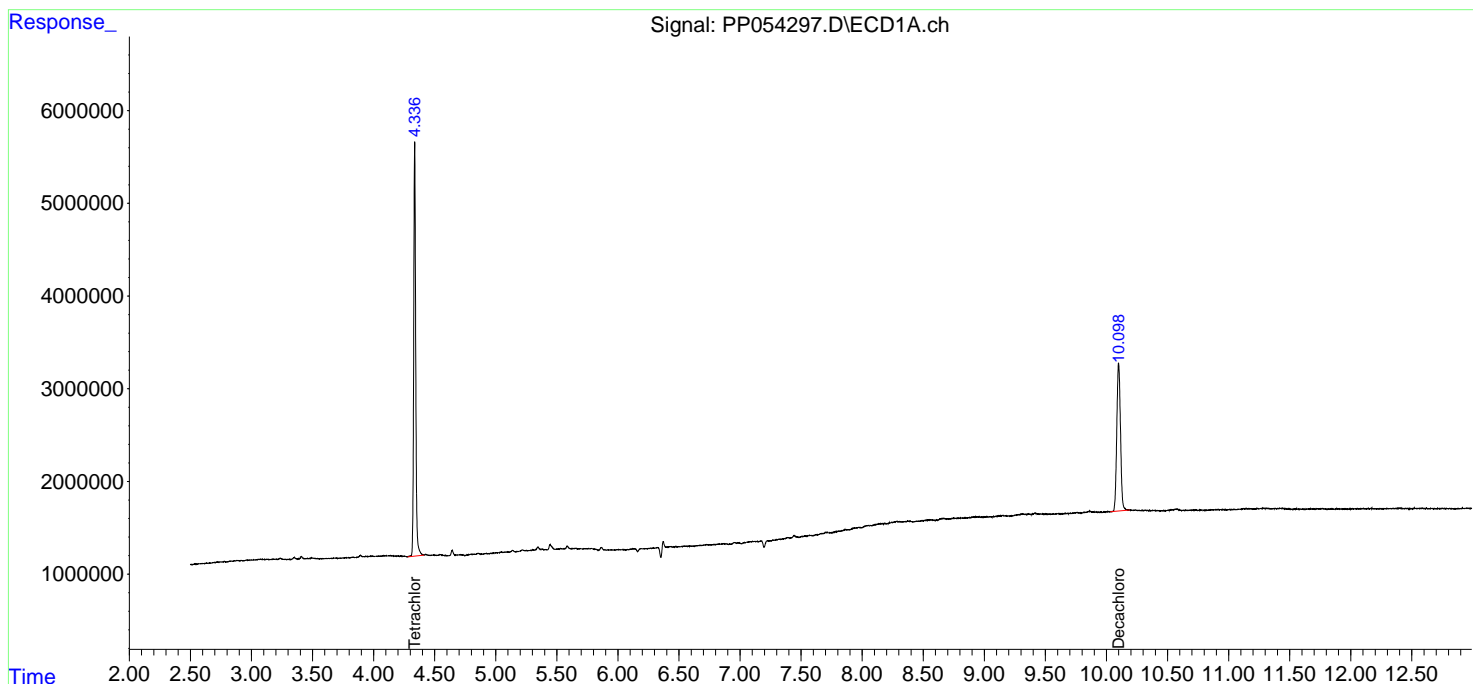
(f)=RT Delta > 1/2 Window (#)=Amounts differ by > 25% (m)=manual int.

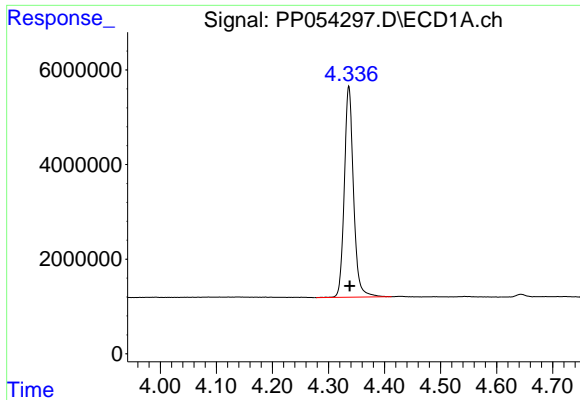
Data Path : Z:\pestpcbsrv\HPCHEM1\ECD\_P\Data\PP010523\  
 Data File : PP054297.D  
 Signal(s) : Signal #1: ECD1A.ch Signal #2: ECD2B.ch  
 Acq On : 06 Jan 2023 01:12  
 Operator : YP\AJ  
 Sample : I.BLK  
 Misc :  
 ALS Vial : 2 Sample Multiplier: 1

Instrument :  
 ECD\_P  
 ClientSampleId :  
 I.BLK

Integration File signal 1: autoint1.e  
 Integration File signal 2: autoint2.e  
 Quant Time: Jan 06 03:41:53 2023  
 Quant Method : Z:\pestpcbsrv\HPCHEM1\ECD\_P\methods\PP010423.M  
 Quant Title : GC EXTRACTABLES  
 QLast Update : Thu Jan 05 03:46:53 2023  
 Response via : Initial Calibration  
 Integrator: ChemStation

Volume Inj. : 2 µl  
 Signal #1 Phase : ZB-MR1 Signal #2 Phase: ZB-MR2  
 Signal #1 Info : 30Mx0.32mmx 0.50µ Signal #2 Info : 30M x 0.32mm x 0.25µm

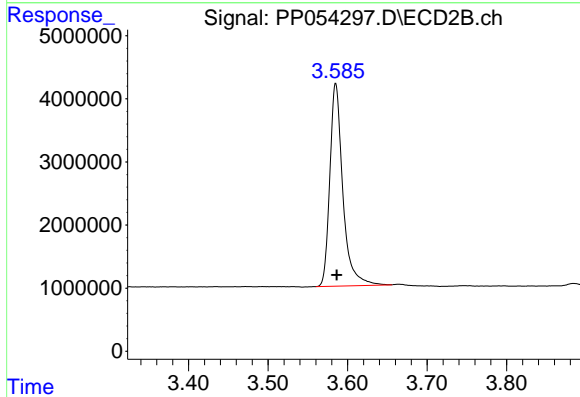




#1 Tetrachloro-m-xylene

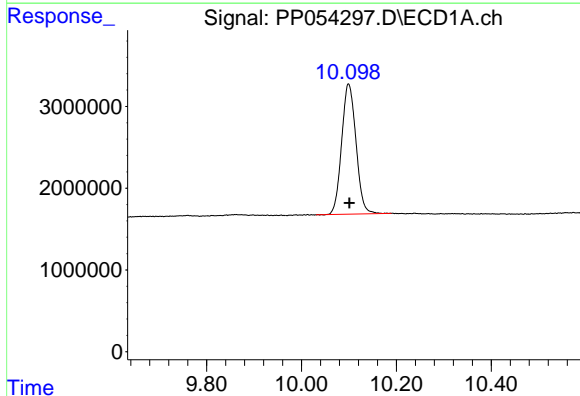
R.T.: 4.336 min  
 Delta R.T.: -0.002 min  
 Response: 51020411  
 Conc: 25.19 ng/ml

Instrument :  
 ECD\_P  
 ClientSampleId :  
 I.BLK



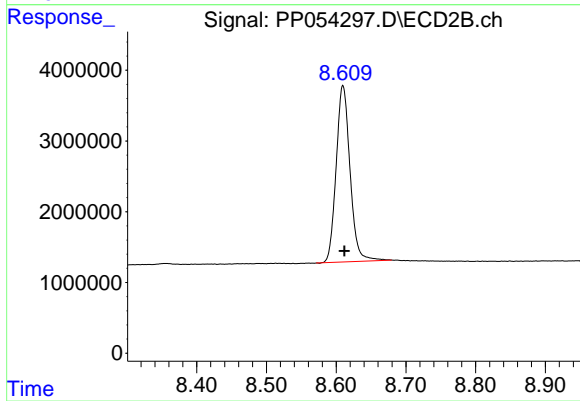
#1 Tetrachloro-m-xylene

R.T.: 3.585 min  
 Delta R.T.: 0.000 min  
 Response: 36463353  
 Conc: 22.61 ng/ml



#2 Decachlorobiphenyl

R.T.: 10.099 min  
 Delta R.T.: -0.002 min  
 Response: 33411232  
 Conc: 23.26 ng/ml



#2 Decachlorobiphenyl

R.T.: 8.610 min  
 Delta R.T.: -0.002 min  
 Response: 34589570  
 Conc: 24.52 ng/ml