

Data Path : Z:\pestpcbsrv\HPCHEM1\ECD_P\Data\PP010524\
 Data File : PP062742.D
 Signal(s) : Signal #1: ECD1A.ch Signal #2: ECD2B.ch
 Acq On : 05 Jan 2024 17:58
 Operator : YP\AJ
 Sample : P1040-02
 Misc :
 ALS Vial : 16 Sample Multiplier: 1

Instrument :
 ECD_P
 ClientSampleId :
 COMP-2

Integration File signal 1: autoint1.e
 Integration File signal 2: autoint2.e
 Quant Time: Jan 05 23:32:58 2024
 Quant Method : Z:\pestpcbsrv\HPCHEM1\ECD_P\methods\PP122123.M
 Quant Title : GC EXTRACTABLES
 QLast Update : Fri Dec 22 03:29:15 2023
 Response via : Initial Calibration
 Integrator: ChemStation

Volume Inj. : 2 µl
 Signal #1 Phase : ZB-MR2 Signal #2 Phase: ZB-MR2
 Signal #1 Info : 30Mx0.32mmx 0.50µ Signal #2 Info : 30M x 0.32mm x 0.25µm

Compound	RT#1	RT#2	Resp#1	Resp#2	ng/ml	ng/ml

System Monitoring Compounds						
1) SA Tetrachlo...	4.395	3.682	52806983	70087668	24.289	23.486
2) SA Decachlor...	10.150	8.783	31721426	45004200	21.998	17.678
Target Compounds						
7) L1 AR-1016-5	0.000	5.239	0	291261	N.D.	3.620 #
8) L2 AR-1221-1	4.602	0.000	1245992	0	45.715	N.D. #
9) L2 AR-1221-2	4.702	3.988	1135501	1398322	55.862	50.623
10) L2 AR-1221-3	4.787f	0.000	512031	0	8.688	N.D. #
11) L3 AR-1232-1	4.787f	0.000	512031	0	10.584	N.D. #
12) L3 AR-1232-2	5.320f	0.000	261083	0	9.846	N.D. #
15) L3 AR-1232-5	0.000	5.239	0	291261	N.D.	8.237 #
20) L4 AR-1242-5	6.494	5.603	118950	397251	2.773	5.499 #
24) L5 AR-1248-4	6.461	5.239	274889	291261	3.609	2.713
25) L5 AR-1248-5	6.494	0.000	118950	0	1.569	N.D. #
26) L6 AR-1254-1	6.435	5.603	398487	397251	4.829	2.502 #
27) L6 AR-1254-2	6.647	5.785f	485213	246297	3.785	1.766 #
28) L6 AR-1254-3	7.010	6.182f	5503869	370581	42.628	1.677 #
29) L6 AR-1254-4	7.296	0.000	884193	0	9.813	N.D. #
30) L6 AR-1254-5	7.741f	6.818	1061658	2494355	10.837	13.000
31) L7 AR-1260-1	0.000	6.298	0	181102	N.D.	1.133 #
32) L7 AR-1260-2	7.432	6.478	427117	208960	3.764	1.141 #
33) L7 AR-1260-3	7.789	0.000	108230	0	1.263	N.D. #
34) L7 AR-1260-4	8.012	7.143f	425313	220510	4.392	1.499 #
35) L7 AR-1260-5	8.346	7.386f	144690	290393	0.812	0.902
37) L8 AR-1262-2	8.346	7.143f	144690	220510	0.713	1.180 #
38) L8 AR-1262-3	8.671f	7.648	492342	379589	3.660	3.480
39) L8 AR-1262-4	8.746	7.702	665328	382356	6.539	1.491 #
41) L9 AR-1268-1	8.671f	7.648	492342	379589	2.179	0.985 #
42) L9 AR-1268-2	8.746	7.702	665328	382356	3.294	1.080 #
43) L9 AR-1268-3	0.000	7.932	0	173189	N.D.	0.553 #
45) L9 AR-1268-5	0.000	8.511	0	1217312	N.D.	1.387 #

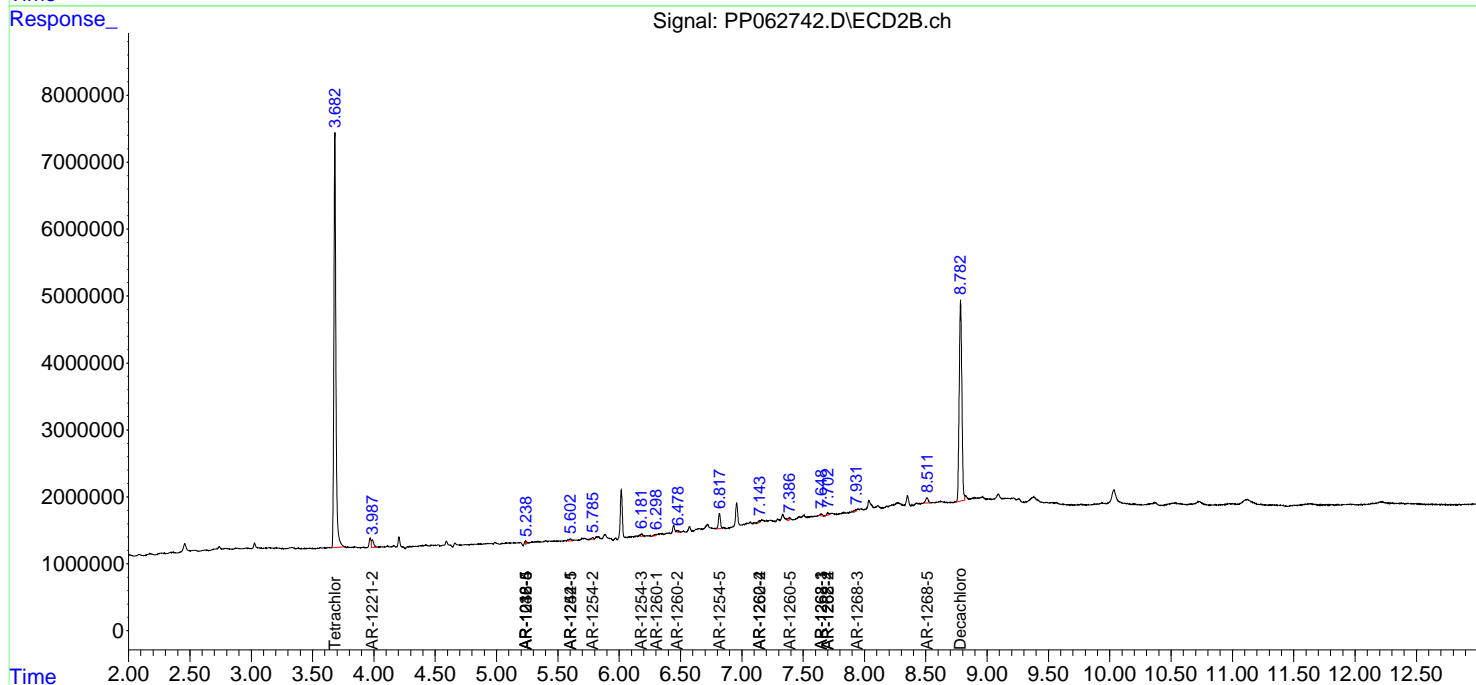
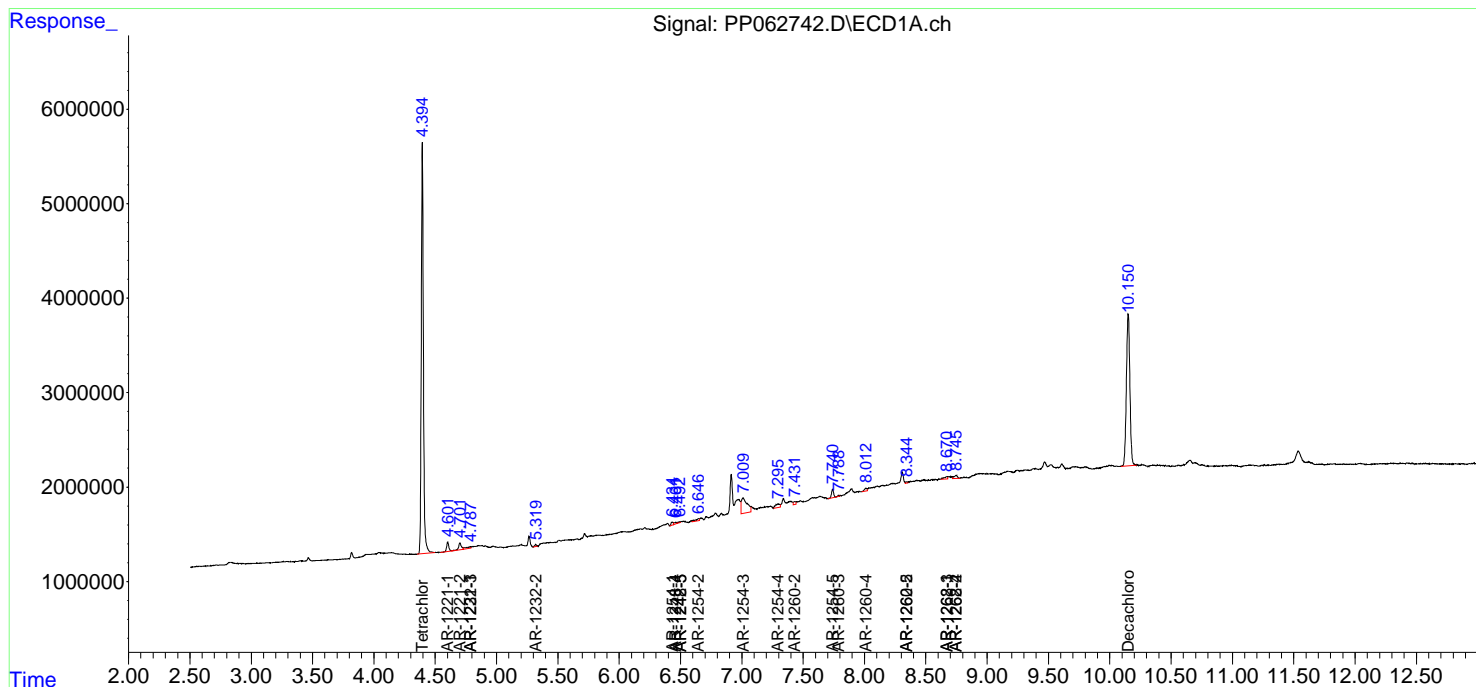
(f)=RT Delta > 1/2 Window (#)=Amounts differ by > 25% (m)=manual int.

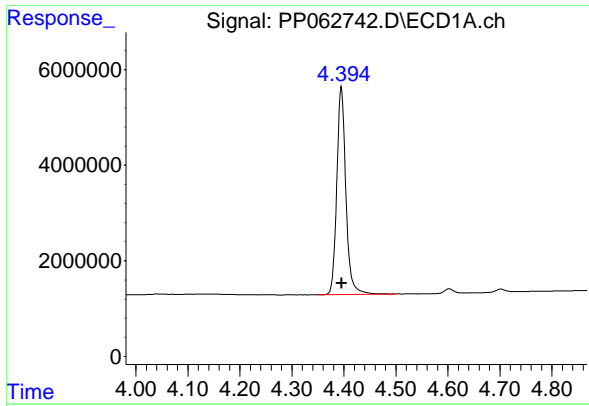
Data Path : Z:\pestpcbsrv\HPCHEM1\ECD_P\Data\PP010524\
 Data File : PP062742.D
 Signal(s) : Signal #1: ECD1A.ch Signal #2: ECD2B.ch
 Acq On : 05 Jan 2024 17:58
 Operator : YP\AJ
 Sample : P1040-02
 Misc :
 ALS Vial : 16 Sample Multiplier: 1

Instrument :
 ECD_P
 ClientSampleId :
 COMP-2

Integration File signal 1: autoint1.e
 Integration File signal 2: autoint2.e
 Quant Time: Jan 05 23:32:58 2024
 Quant Method : Z:\pestpcbsrv\HPCHEM1\ECD_P\methods\PP122123.M
 Quant Title : GC EXTRACTABLES
 QLast Update : Fri Dec 22 03:29:15 2023
 Response via : Initial Calibration
 Integrator: ChemStation

Volume Inj. : 2 µl
 Signal #1 Phase : ZB-MR1 Signal #2 Phase: ZB-MR2
 Signal #1 Info : 30Mx0.32mmx 0.50µ Signal #2 Info : 30M x 0.32mm x 0.25µm

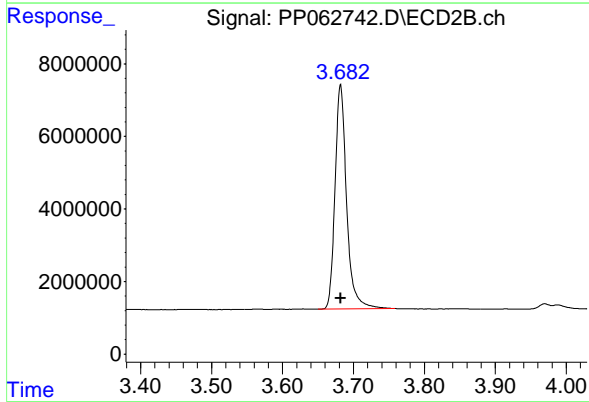




#1 Tetrachloro-m-xylene

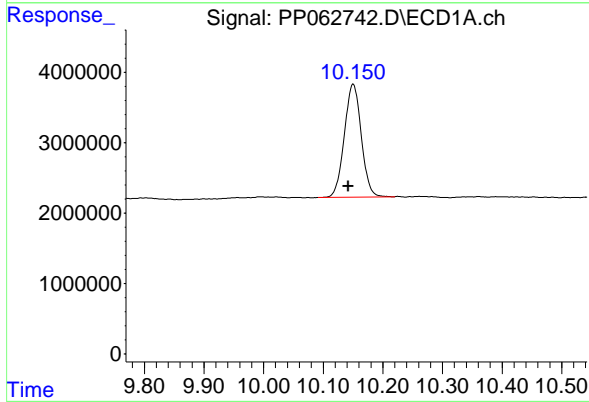
R.T.: 4.395 min
 Delta R.T.: 0.000 min
 Response: 52806983
 Conc: 24.29 ng/ml

Instrument :
 ECD_P
 ClientSampleId :
 COMP-2



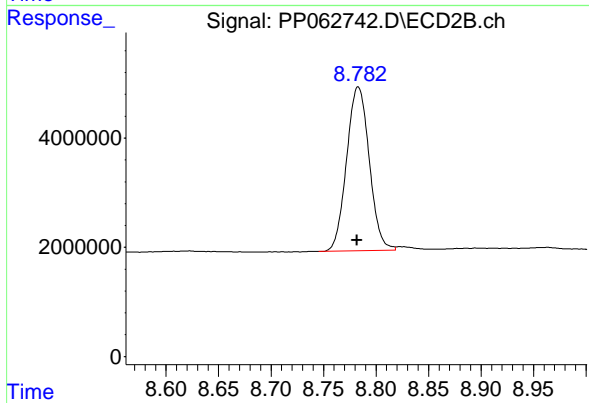
#1 Tetrachloro-m-xylene

R.T.: 3.682 min
 Delta R.T.: 0.000 min
 Response: 70087668
 Conc: 23.49 ng/ml



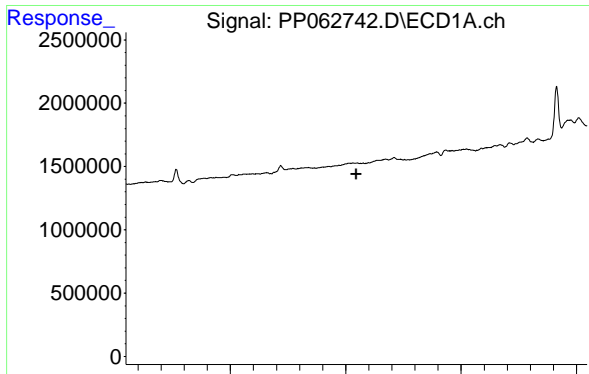
#2 Decachlorobiphenyl

R.T.: 10.150 min
 Delta R.T.: 0.009 min
 Response: 31721426
 Conc: 22.00 ng/ml



#2 Decachlorobiphenyl

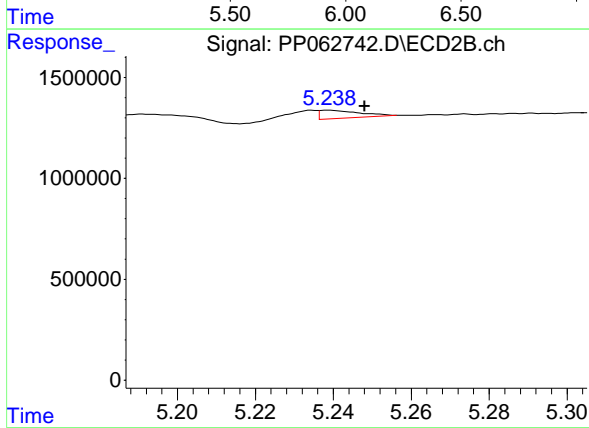
R.T.: 8.783 min
 Delta R.T.: 0.001 min
 Response: 45004200
 Conc: 17.68 ng/ml



#7 AR-1016-5

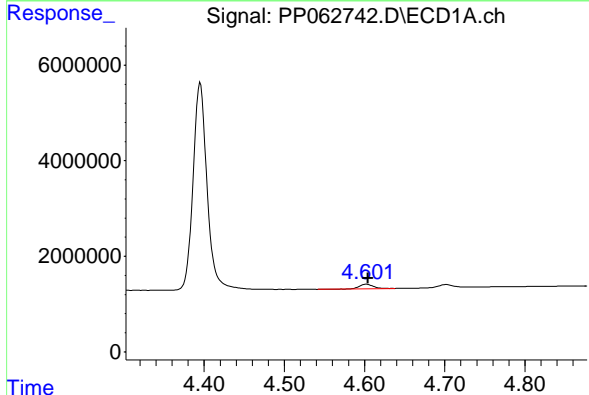
R.T.: 0.000 min
 Exp R.T.: 6.046 min
 Response: 0
 Conc: N.D.

Instrument :
 ECD_P
 ClientSampleId :
 COMP-2



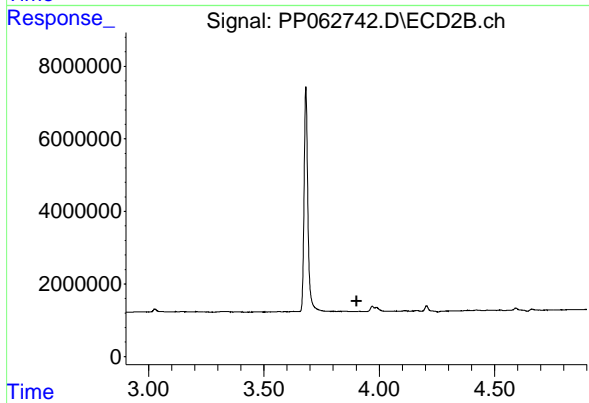
#7 AR-1016-5

R.T.: 5.239 min
 Delta R.T.: -0.009 min
 Response: 291261
 Conc: 3.62 ng/ml



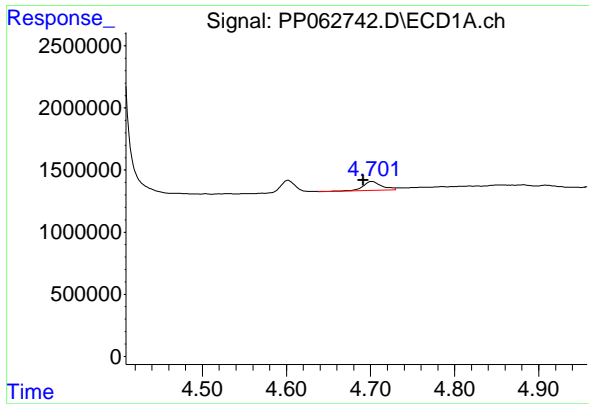
#8 AR-1221-1

R.T.: 4.602 min
 Delta R.T.: -0.002 min
 Response: 1245992
 Conc: 45.71 ng/ml



#8 AR-1221-1

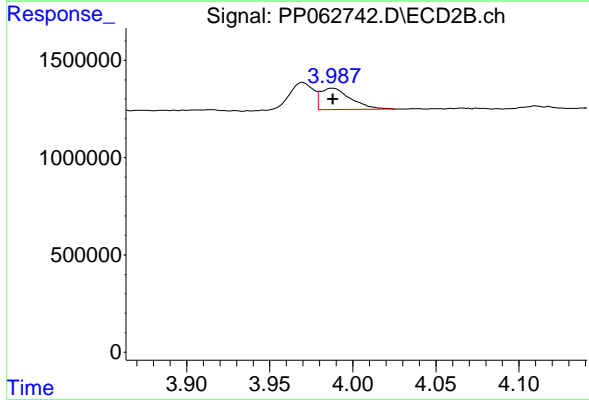
R.T.: 0.000 min
 Exp R.T.: 3.901 min
 Response: 0
 Conc: N.D.



#9 AR-1221-2

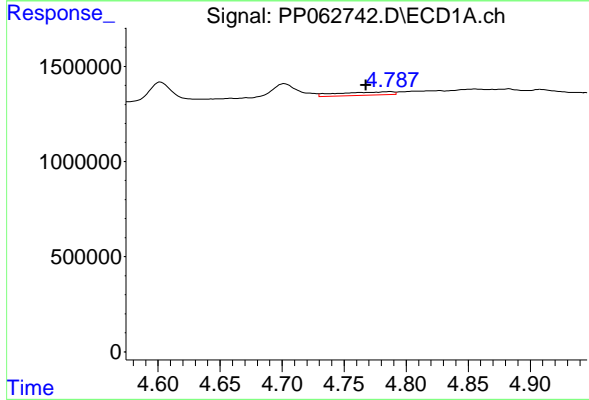
R.T.: 4.702 min
 Delta R.T.: 0.011 min
 Response: 1135501
 Conc: 55.86 ng/ml

Instrument :
 ECD_P
 ClientSampleId :
 COMP-2



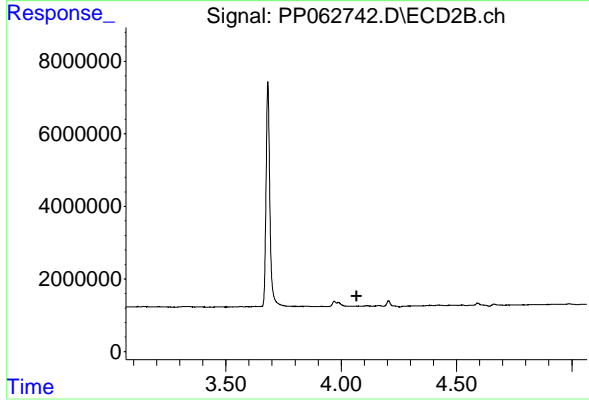
#9 AR-1221-2

R.T.: 3.988 min
 Delta R.T.: 0.000 min
 Response: 1398322
 Conc: 50.62 ng/ml



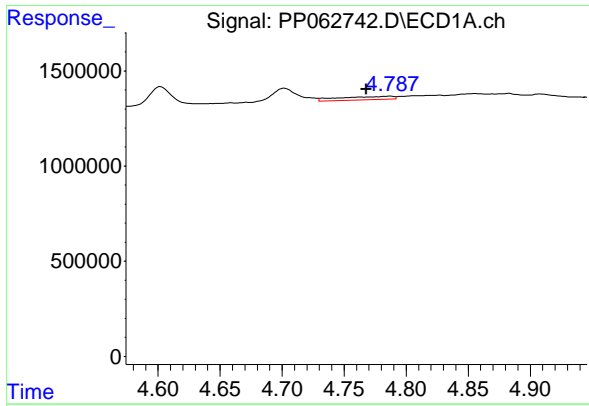
#10 AR-1221-3

R.T.: 4.787 min
 Delta R.T.: 0.019 min
 Response: 512031
 Conc: 8.69 ng/ml



#10 AR-1221-3

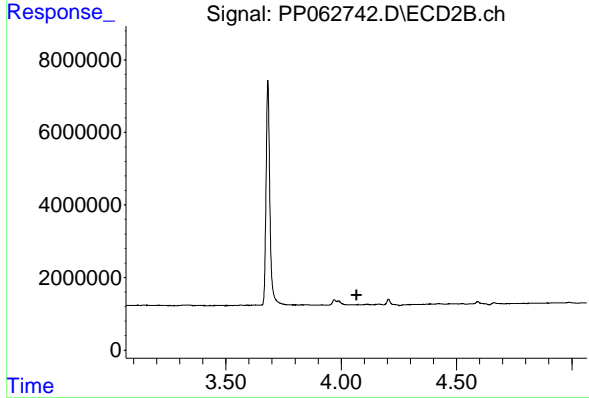
R.T.: 0.000 min
 Exp R.T. : 4.066 min
 Response: 0
 Conc: N.D.



#11 AR-1232-1

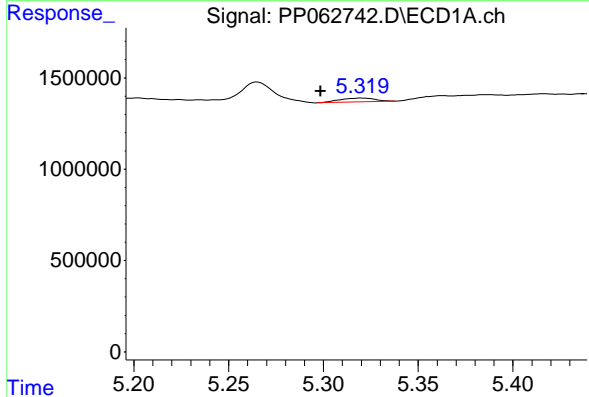
R.T.: 4.787 min
 Delta R.T.: 0.019 min
 Response: 512031
 Conc: 10.58 ng/ml

Instrument :
 ECD_P
 ClientSampleId :
 COMP-2



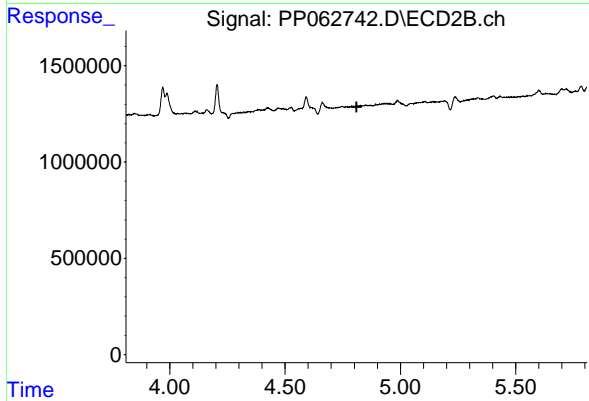
#11 AR-1232-1

R.T.: 0.000 min
 Exp R.T. : 4.066 min
 Response: 0
 Conc: N.D.



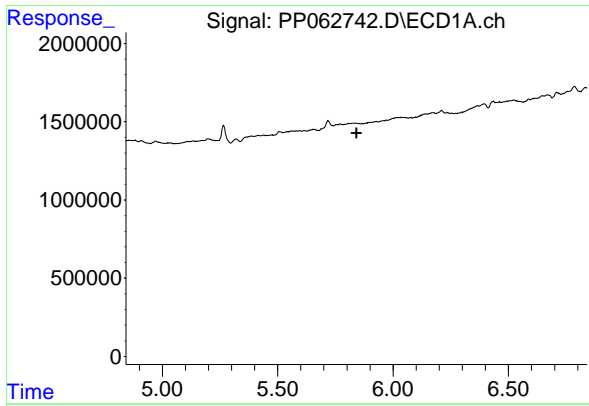
#12 AR-1232-2

R.T.: 5.320 min
 Delta R.T.: 0.022 min
 Response: 261083
 Conc: 9.85 ng/ml



#12 AR-1232-2

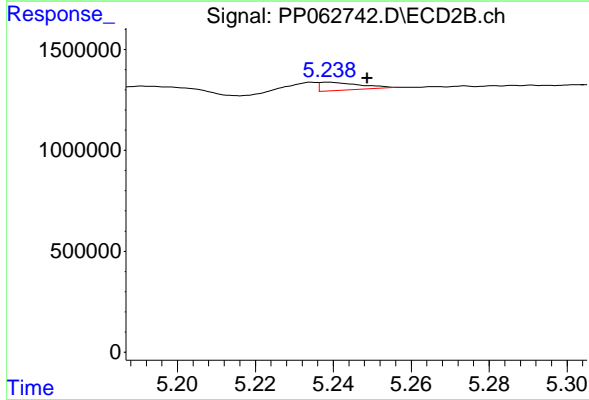
R.T.: 0.000 min
 Exp R.T. : 4.810 min
 Response: 0
 Conc: N.D.



#15 AR-1232-5

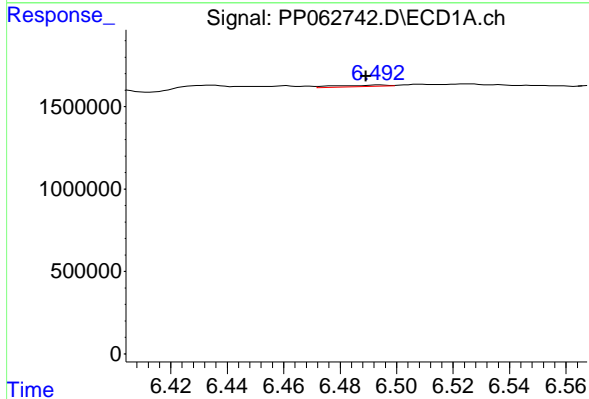
R.T.: 0.000 min
 Exp R.T.: 5.842 min
 Response: 0
 Conc: N.D.

Instrument :
 ECD_P
 ClientSampleId :
 COMP-2



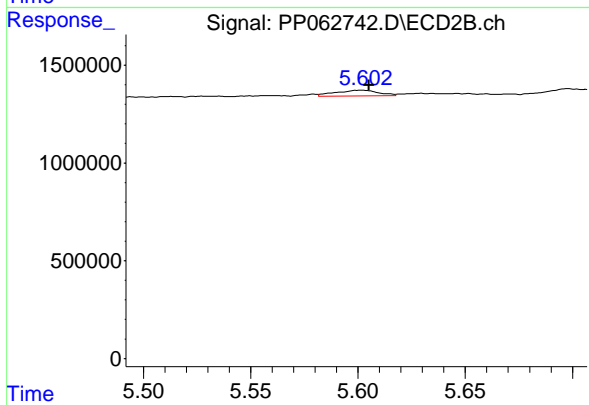
#15 AR-1232-5

R.T.: 5.239 min
 Delta R.T.: -0.010 min
 Response: 291261
 Conc: 8.24 ng/ml



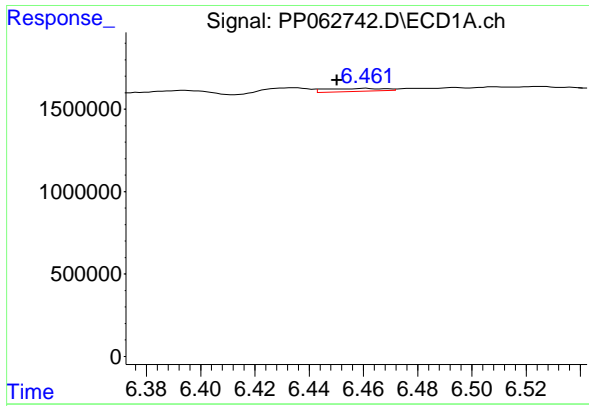
#20 AR-1242-5

R.T.: 6.494 min
 Delta R.T.: 0.004 min
 Response: 118950
 Conc: 2.77 ng/ml



#20 AR-1242-5

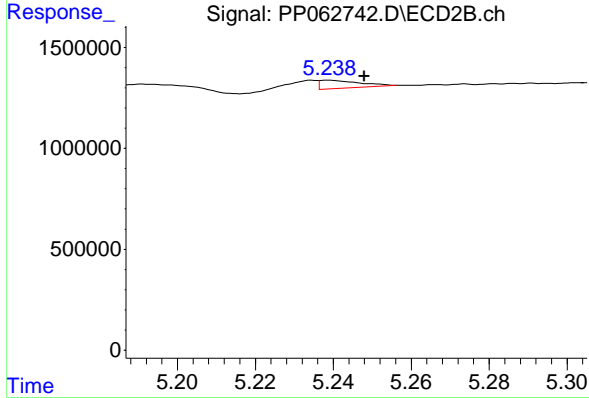
R.T.: 5.603 min
 Delta R.T.: -0.003 min
 Response: 397251
 Conc: 5.50 ng/ml



#24 AR-1248-4

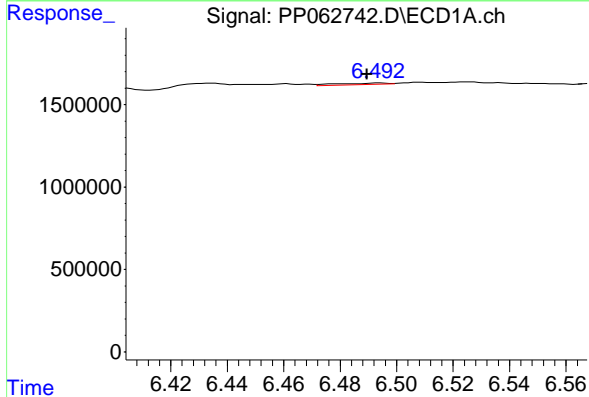
R.T.: 6.461 min
 Delta R.T.: 0.011 min
 Response: 274889
 Conc: 3.61 ng/ml

Instrument :
 ECD_P
 ClientSampleId :
 COMP-2



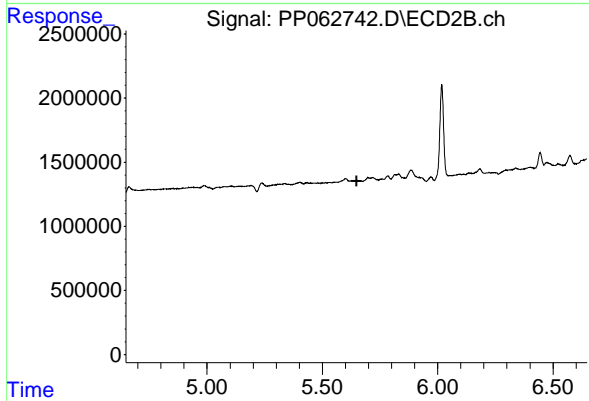
#24 AR-1248-4

R.T.: 5.239 min
 Delta R.T.: -0.009 min
 Response: 291261
 Conc: 2.71 ng/ml



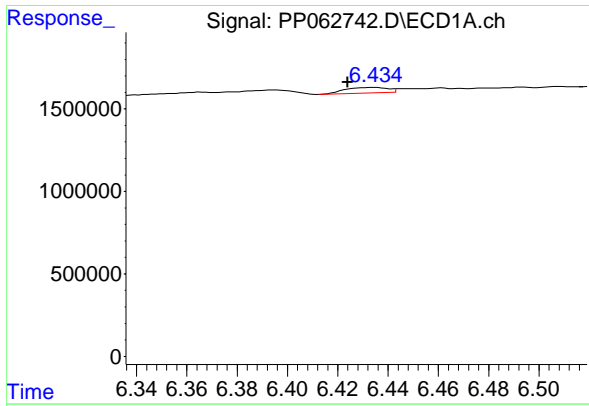
#25 AR-1248-5

R.T.: 6.494 min
 Delta R.T.: 0.004 min
 Response: 118950
 Conc: 1.57 ng/ml



#25 AR-1248-5

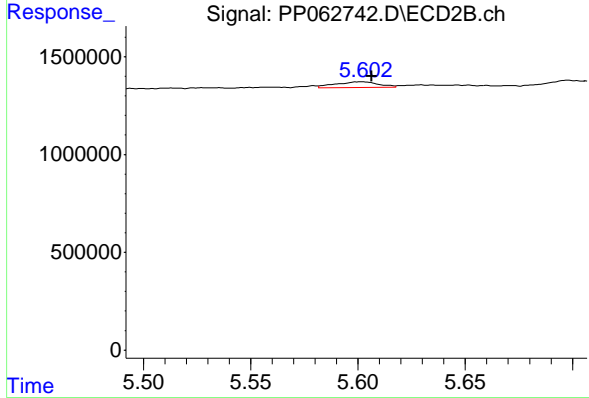
R.T.: 0.000 min
 Exp R.T. : 5.648 min
 Response: 0
 Conc: N.D.



#26 AR-1254-1

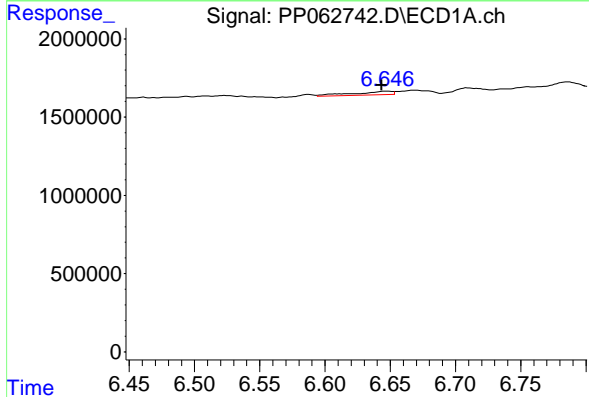
R.T.: 6.435 min
 Delta R.T.: 0.011 min
 Response: 398487
 Conc: 4.83 ng/ml

Instrument :
 ECD_P
 ClientSampleId :
 COMP-2



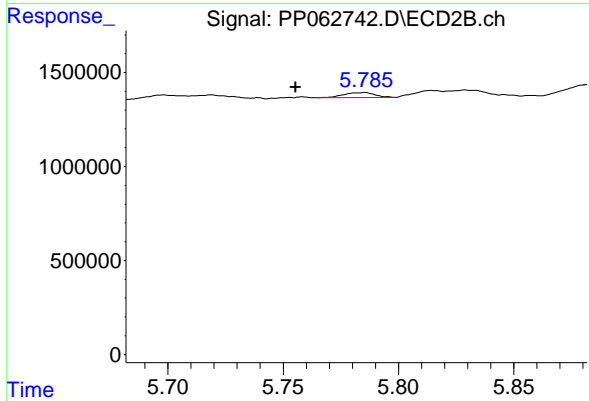
#26 AR-1254-1

R.T.: 5.603 min
 Delta R.T.: -0.004 min
 Response: 397251
 Conc: 2.50 ng/ml



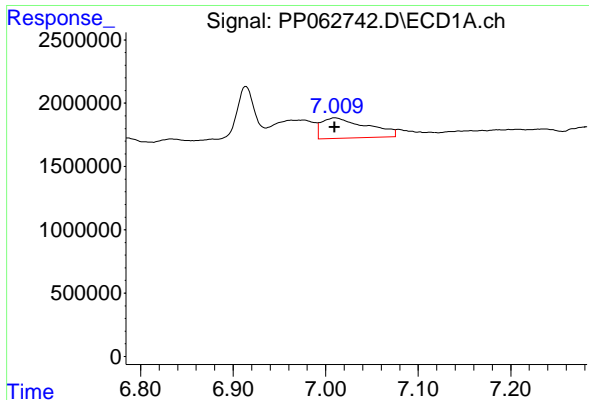
#27 AR-1254-2

R.T.: 6.647 min
 Delta R.T.: 0.003 min
 Response: 485213
 Conc: 3.78 ng/ml



#27 AR-1254-2

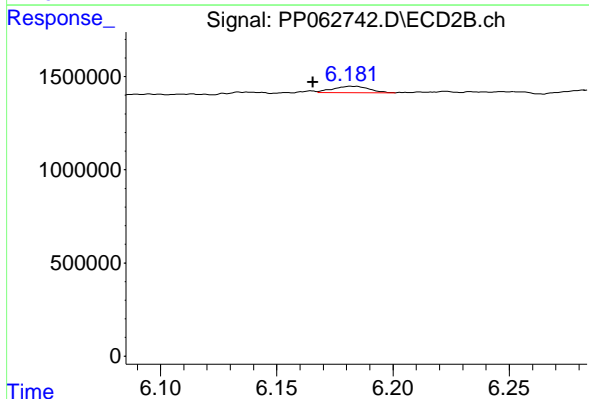
R.T.: 5.785 min
 Delta R.T.: 0.030 min
 Response: 246297
 Conc: 1.77 ng/ml



#28 AR-1254-3

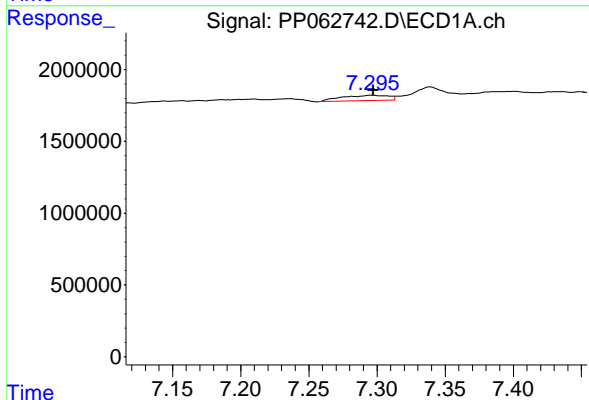
R.T.: 7.010 min
 Delta R.T.: 0.000 min
 Response: 5503869
 Conc: 42.63 ng/ml

Instrument :
 ECD_P
 ClientSampleId :
 COMP-2



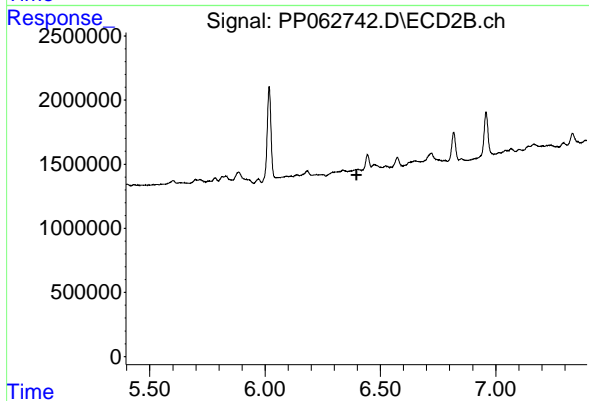
#28 AR-1254-3

R.T.: 6.182 min
 Delta R.T.: 0.016 min
 Response: 370581
 Conc: 1.68 ng/ml



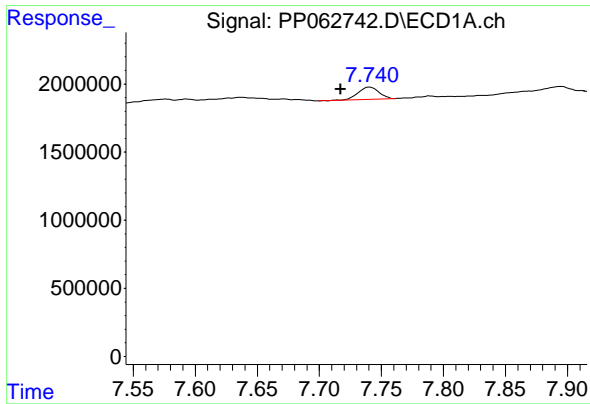
#29 AR-1254-4

R.T.: 7.296 min
 Delta R.T.: 0.000 min
 Response: 884193
 Conc: 9.81 ng/ml



#29 AR-1254-4

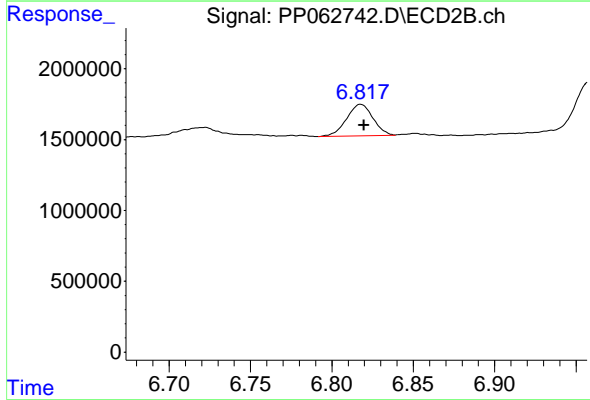
R.T.: 0.000 min
 Exp R.T. : 6.397 min
 Response: 0
 Conc: N.D.



#30 AR-1254-5

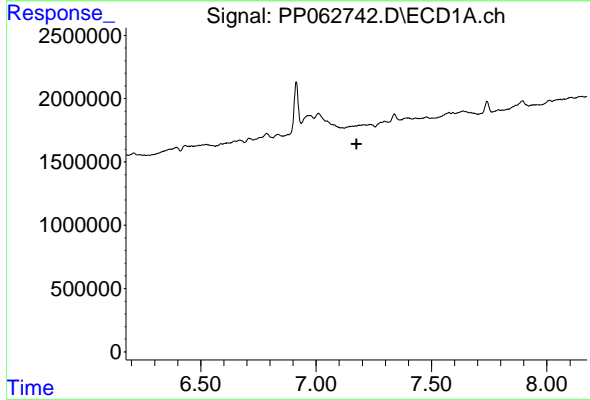
R.T.: 7.741 min
 Delta R.T.: 0.023 min
 Response: 1061658
 Conc: 10.84 ng/ml

Instrument :
 ECD_P
 ClientSampleId :
 COMP-2



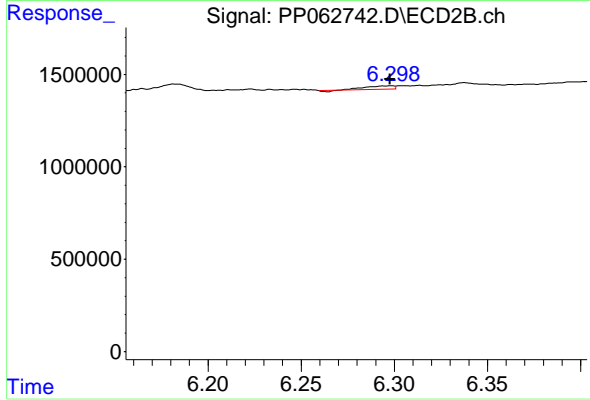
#30 AR-1254-5

R.T.: 6.818 min
 Delta R.T.: -0.002 min
 Response: 2494355
 Conc: 13.00 ng/ml



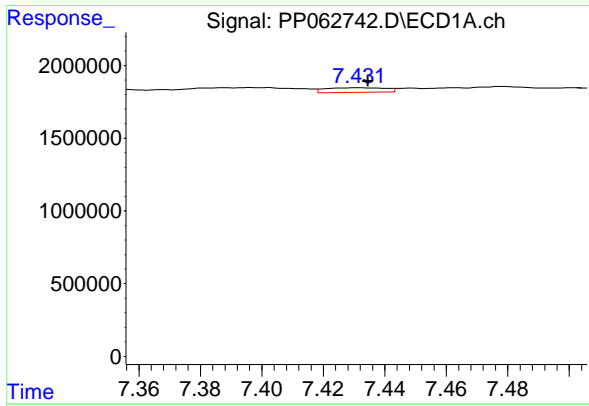
#31 AR-1260-1

R.T.: 0.000 min
 Exp R.T. : 7.176 min
 Response: 0
 Conc: N.D.



#31 AR-1260-1

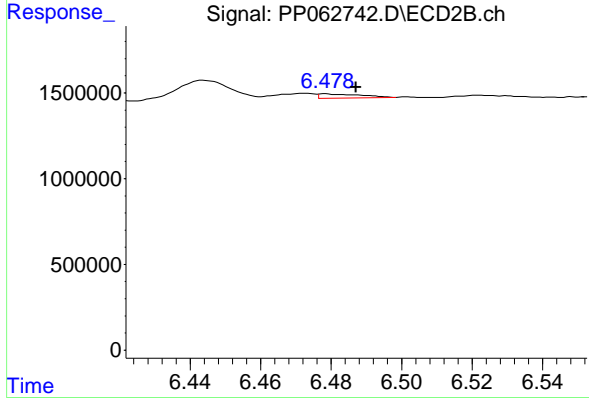
R.T.: 6.298 min
 Delta R.T.: 0.000 min
 Response: 181102
 Conc: 1.13 ng/ml



#32 AR-1260-2

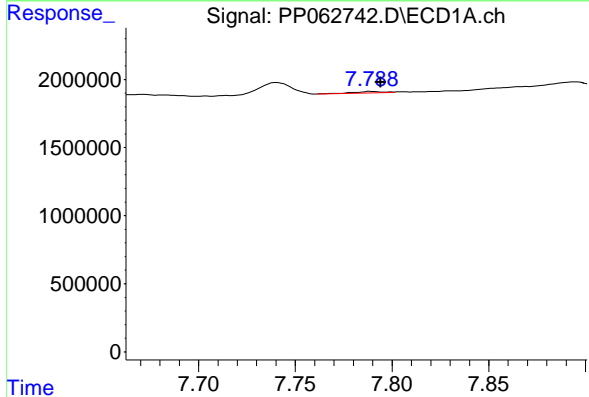
R.T.: 7.432 min
 Delta R.T.: -0.002 min
 Response: 427117
 Conc: 3.76 ng/ml

Instrument :
 ECD_P
 ClientSampleId :
 COMP-2



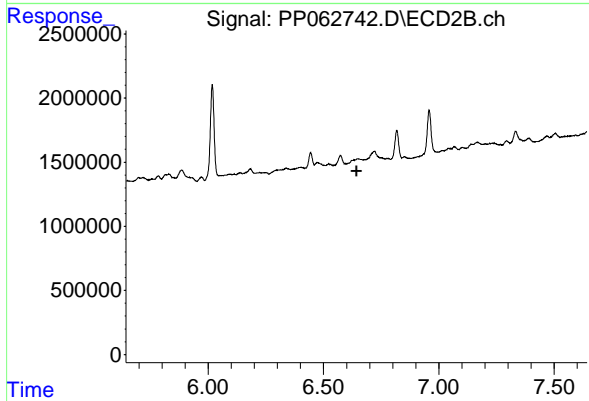
#32 AR-1260-2

R.T.: 6.478 min
 Delta R.T.: -0.009 min
 Response: 208960
 Conc: 1.14 ng/ml



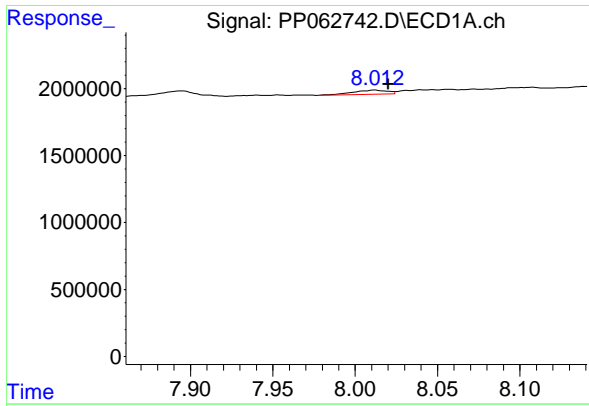
#33 AR-1260-3

R.T.: 7.789 min
 Delta R.T.: -0.005 min
 Response: 108230
 Conc: 1.26 ng/ml



#33 AR-1260-3

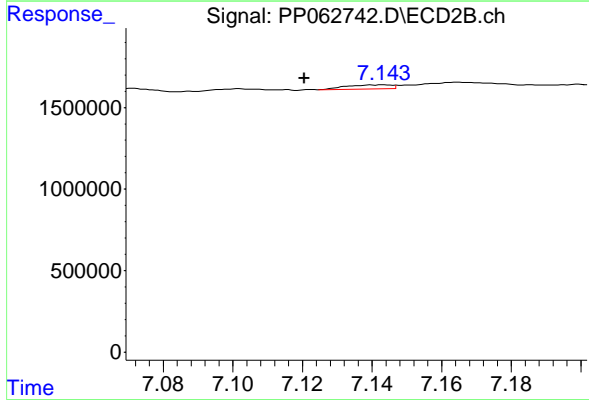
R.T.: 0.000 min
 Exp R.T. : 6.643 min
 Response: 0
 Conc: N.D.



#34 AR-1260-4

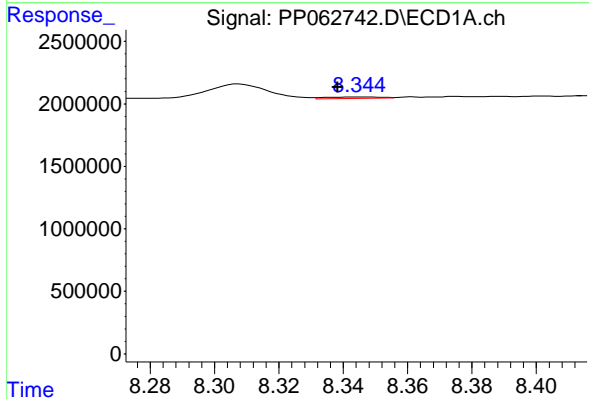
R.T.: 8.012 min
 Delta R.T.: -0.008 min
 Response: 425313
 Conc: 4.39 ng/ml

Instrument :
 ECD_P
 ClientSampleId :
 COMP-2



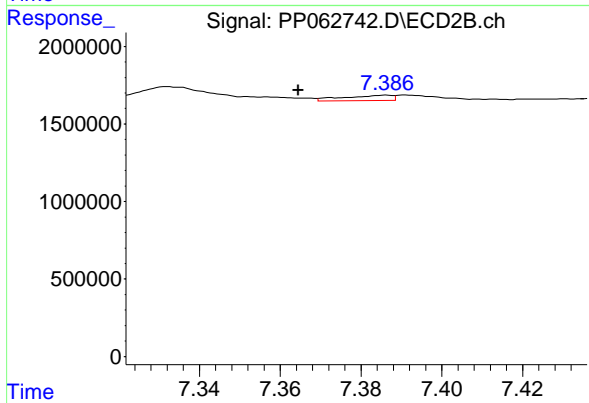
#34 AR-1260-4

R.T.: 7.143 min
 Delta R.T.: 0.023 min
 Response: 220510
 Conc: 1.50 ng/ml



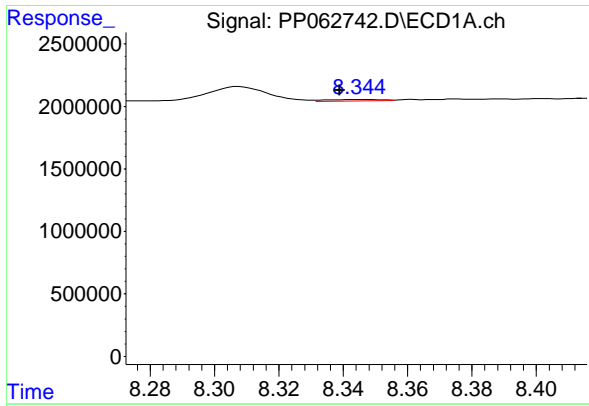
#35 AR-1260-5

R.T.: 8.346 min
 Delta R.T.: 0.008 min
 Response: 144690
 Conc: 0.81 ng/ml



#35 AR-1260-5

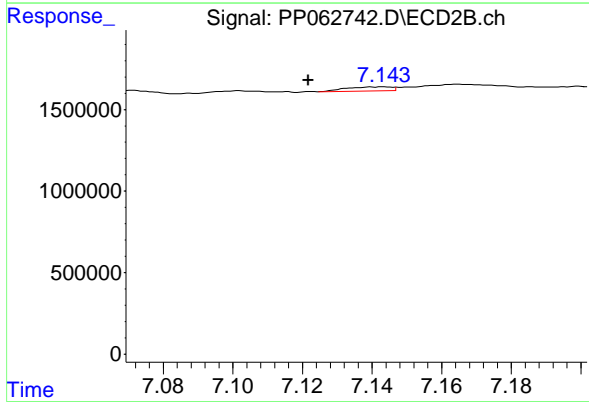
R.T.: 7.386 min
 Delta R.T.: 0.022 min
 Response: 290393
 Conc: 0.90 ng/ml



#37 AR-1262-2

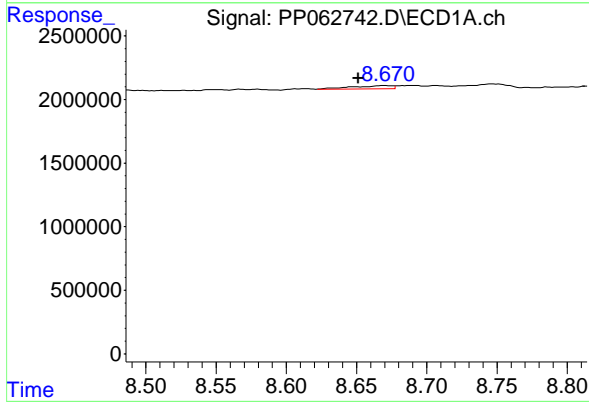
R.T.: 8.346 min
 Delta R.T.: 0.007 min
 Response: 144690
 Conc: 0.71 ng/ml

Instrument :
 ECD_P
 ClientSampleId :
 COMP-2



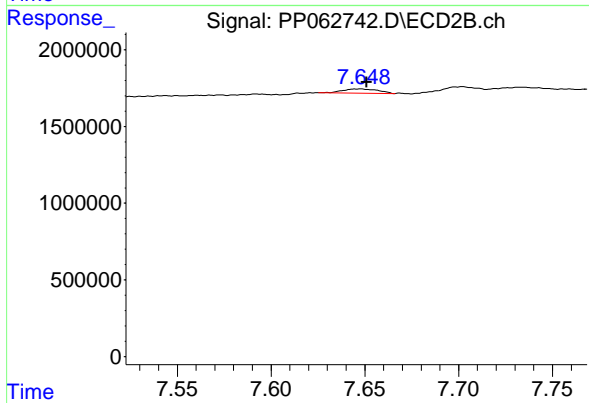
#37 AR-1262-2

R.T.: 7.143 min
 Delta R.T.: 0.022 min
 Response: 220510
 Conc: 1.18 ng/ml



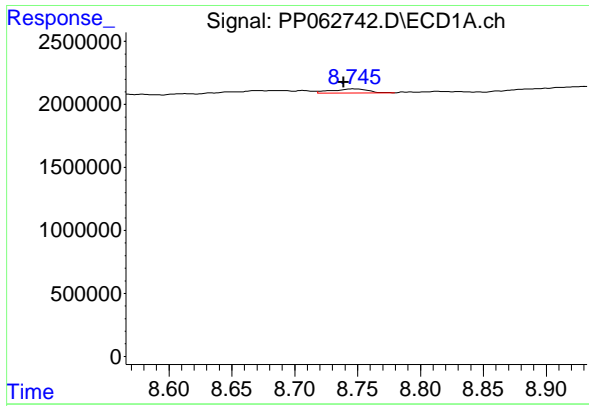
#38 AR-1262-3

R.T.: 8.671 min
 Delta R.T.: 0.019 min
 Response: 492342
 Conc: 3.66 ng/ml



#38 AR-1262-3

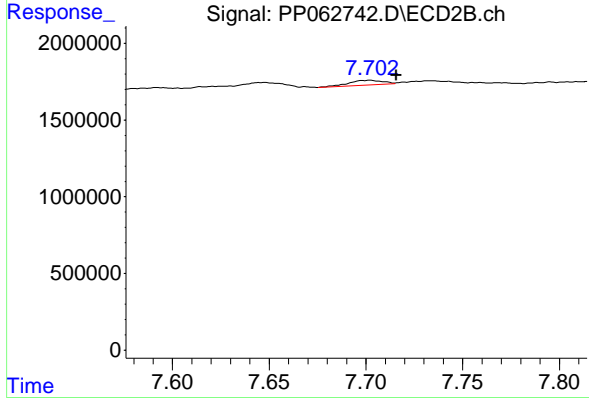
R.T.: 7.648 min
 Delta R.T.: -0.003 min
 Response: 379589
 Conc: 3.48 ng/ml



#39 AR-1262-4

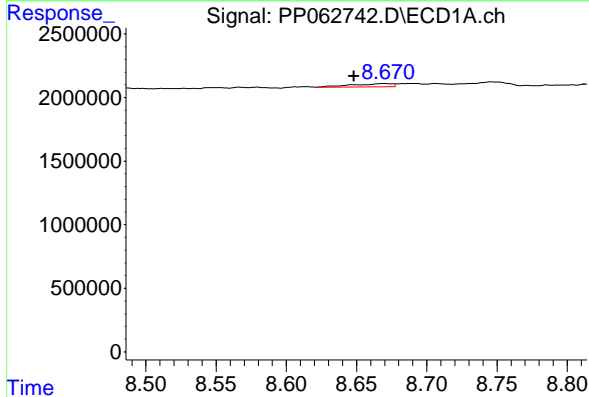
R.T.: 8.746 min
 Delta R.T.: 0.007 min
 Response: 665328
 Conc: 6.54 ng/ml

Instrument :
 ECD_P
 ClientSampleId :
 COMP-2



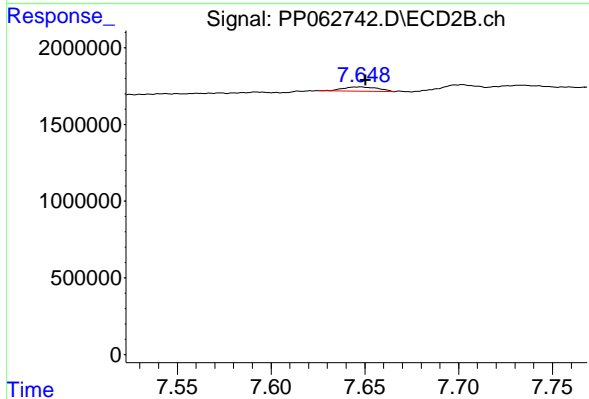
#39 AR-1262-4

R.T.: 7.702 min
 Delta R.T.: -0.013 min
 Response: 382356
 Conc: 1.49 ng/ml



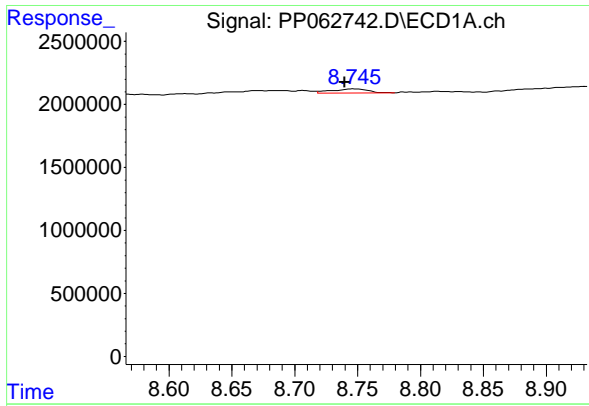
#41 AR-1268-1

R.T.: 8.671 min
 Delta R.T.: 0.023 min
 Response: 492342
 Conc: 2.18 ng/ml



#41 AR-1268-1

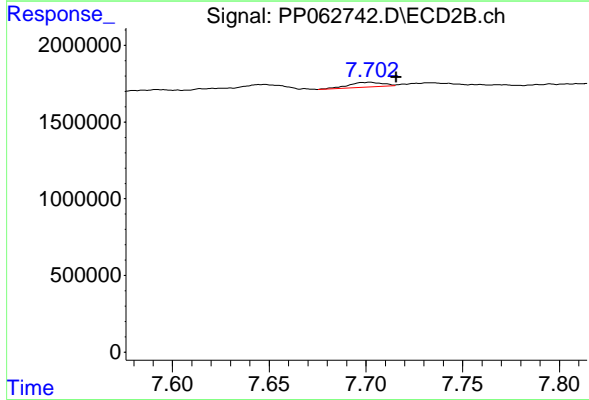
R.T.: 7.648 min
 Delta R.T.: -0.002 min
 Response: 379589
 Conc: 0.98 ng/ml



#42 AR-1268-2

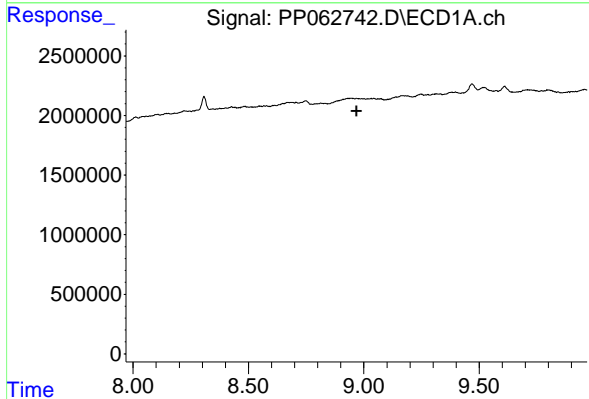
R.T.: 8.746 min
 Delta R.T.: 0.006 min
 Response: 665328
 Conc: 3.29 ng/ml

Instrument :
 ECD_P
 ClientSampleId :
 COMP-2



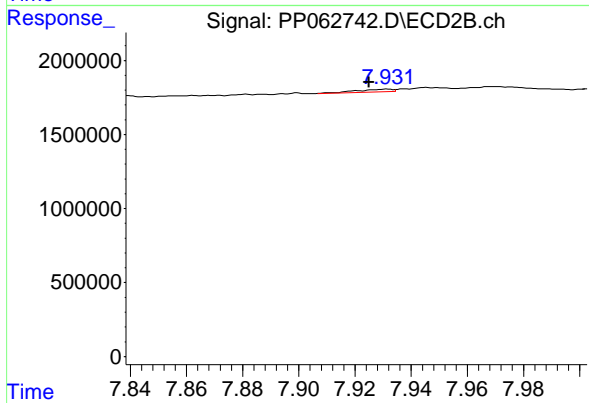
#42 AR-1268-2

R.T.: 7.702 min
 Delta R.T.: -0.013 min
 Response: 382356
 Conc: 1.08 ng/ml



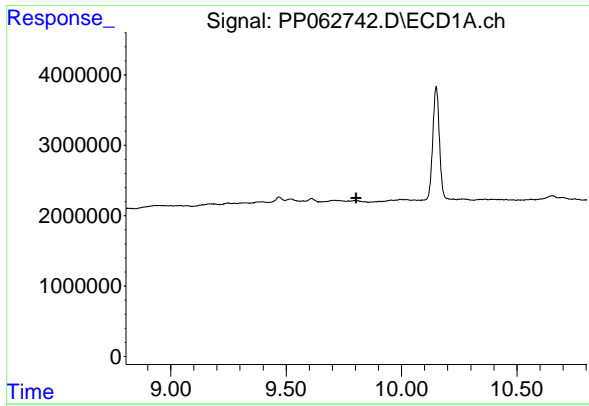
#43 AR-1268-3

R.T.: 0.000 min
 Exp R.T. : 8.968 min
 Response: 0
 Conc: N.D.



#43 AR-1268-3

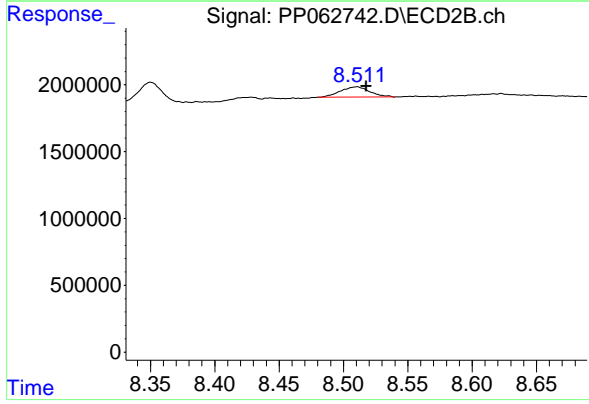
R.T.: 7.932 min
 Delta R.T.: 0.007 min
 Response: 173189
 Conc: 0.55 ng/ml



#45 AR-1268-5

R.T.: 0.000 min
Exp R.T.: 9.804 min
Response: 0
Conc: N.D.

Instrument :
ECD_P
ClientSampleId :
COMP-2



#45 AR-1268-5

R.T.: 8.511 min
Delta R.T.: -0.007 min
Response: 1217312
Conc: 1.39 ng/ml