

Data Path : Z:\pestpcbsrv\HPCHEM1\ECD\_P\Data\PP010622\  
 Data File : PP042669.D  
 Signal(s) : Signal #1: ECD1A.CH Signal #2: ECD2B.CH  
 Acq On : 07 Jan 2022 5:16  
 Operator : AJ\MA  
 Sample : AR1248CCC500  
 Misc :  
 ALS Vial : 5 Sample Multiplier: 1

Instrument :  
 ECD\_P  
 ClientSampleId :

Integration File signal 1: autoint1.e  
 Integration File signal 2: autoint2.e  
 Quant Time: Jan 07 05:36:46 2022  
 Quant Method : Z:\pestpcbsrv\HPCHEM1\ECD\_P\methods\PP010422.M  
 Quant Title : GC EXTRACTABLES  
 QLast Update : Wed Jan 05 12:01:35 2022  
 Response via : Initial Calibration  
 Integrator: ChemStation 6890 Scale Mode: Small noise peaks clipped

Volume Inj. : 2 µl  
 Signal #1 Phase : ZB-MR1 Signal #2 Phase: ZB-MR2  
 Signal #1 Info : 30Mx0.32mmx 0.50µ Signal #2 Info : 30M x 0.32mm x 0.25µm

Compound	RT#1	RT#2	Resp#1	Resp#2	ng/ml	ng/ml
System Monitoring Compounds						
1) SA Tetrachlo...	4.884	4.050	988555	1300604	51.027	49.684
2) SA Decachlor...	10.823	9.392	645233	953757	55.000	48.530
Target Compounds						
3) L1 AR-1016-1	6.187	5.316	174346	292594	292.161	280.009
4) L1 AR-1016-2	6.211	5.336	212304	288966	243.480	204.257
5) L1 AR-1016-3	6.277	5.531	96668	205949	181.525	252.691 #
6) L1 AR-1016-4	6.380	5.580	112143	408264	250.397	632.348 #
7) L1 AR-1016-5	6.697	5.812	289270	475076	669.680	578.494
9) L2 AR-1221-2	5.232	4.407	14700	21445	92.907	79.859
10) L2 AR-1221-3	5.309	4.500	14816	23548	28.576	28.593
11) L3 AR-1232-1	5.309	4.500	14816	23548	35.091	35.492
12) L3 AR-1232-2	5.896	5.336	82427	288966	424.535	485.625
13) L3 AR-1232-3	6.211	5.531	212304	205949	595.688	630.066
14) L3 AR-1232-4	6.380	5.626	112143	435910	632.702	1480.105 #
15) L3 AR-1232-5	6.483	5.812	237970	475076	1916.304	1484.350
16) L4 AR-1242-1	6.187	5.316	174346	292594	378.012	353.221
17) L4 AR-1242-2	6.211	5.336	212304	288966	317.979	258.301
18) L4 AR-1242-3	6.277	5.531	96668	205949	242.498	318.463 #
19) L4 AR-1242-4	6.380	5.626	112143	435910	335.850	695.644 #
20) L4 AR-1242-5	7.162	6.193	289648	679583	878.921	926.525
21) L5 AR-1248-1	6.187	5.316	174346	292594	515.175	480.854
22) L5 AR-1248-2	6.483	5.580	237970	408264	516.140	479.512
23) L5 AR-1248-3	6.697	5.626	289270	435910	508.403	482.508
24) L5 AR-1248-4	7.122	5.812	297603	475076	532.168	453.849
25) L5 AR-1248-5	7.162	6.236	289648	500628	528.668	504.581
26) L6 AR-1254-1	7.093	6.193	230296	679583	378.029	441.335
27) L6 AR-1254-2	7.324	6.352	301675	217506	328.504	161.827 #
28) L6 AR-1254-3	7.701	6.777	171129	317689	186.809	152.104
29) L6 AR-1254-4	7.995	7.016	110321	193766	184.182	158.327
30) L6 AR-1254-5	8.422	7.448	26626	55869	42.113	34.016
31) L7 AR-1260-1	7.871	6.926f	-3087	150534	N.D.	115.691 #
32) L7 AR-1260-2	8.133	7.109	40024	37716	56.901	24.808 #
33) L7 AR-1260-3	0.000	7.265	0	34717	N.D.	24.283 #
34) L7 AR-1260-4	8.716	0.000	16465	0	24.957	N.D. #
35) L7 AR-1260-5	9.053	0.000	8165	0	6.768	N.D. #
36) L8 AR-1262-1	0.000	7.448	0	55869	N.D.	64.360 #
37) L8 AR-1262-2	9.053	0.000	8165	0	6.106	N.D. #
38) L8 AR-1262-3	9.365	0.000	7832	0	11.883	N.D. #
40) L8 AR-1262-5	10.078	0.000	2366	0	4.848	N.D. #
41) L9 AR-1268-1	9.365f	0.000	7832	0	4.787	N.D. #
43) L9 AR-1268-3	9.689f	0.000	10183	0	7.566	N.D. #
44) L9 AR-1268-4	10.078	0.000	2366	0	4.321	N.D. #

Data Path : Z:\pestpcbsrv\HPCHEM1\ECD\_P\Data\PP010622\  
 Data File : PP042669.D  
 Signal(s) : Signal #1: ECD1A.CH Signal #2: ECD2B.CH  
 Acq On : 07 Jan 2022 5:16  
 Operator : AJ\MA  
 Sample : AR1248CCC500  
 Misc :  
 ALS Vial : 5 Sample Multiplier: 1

Instrument :  
 ECD\_P  
 ClientSampleId :

Integration File signal 1: autoint1.e  
 Integration File signal 2: autoint2.e  
 Quant Time: Jan 07 05:36:46 2022  
 Quant Method : Z:\pestpcbsrv\HPCHEM1\ECD\_P\methods\PP010422.M  
 Quant Title : GC EXTRACTABLES  
 QLast Update : Wed Jan 05 12:01:35 2022  
 Response via : Initial Calibration  
 Integrator: ChemStation 6890 Scale Mode: Small noise peaks clipped

Volume Inj. : 2 µl  
 Signal #1 Phase : ZB-MR1 Signal #2 Phase: ZB-MR2  
 Signal #1 Info : 30Mx0.32mmx 0.50µ Signal #2 Info : 30M x 0.32mm x 0.25µm

	Compound	RT#1	RT#2	Resp#1	Resp#2	ng/ml	ng/ml
45)	L9 AR-1268-5	10.500f	0.000	13671	0	3.063	N.D. #

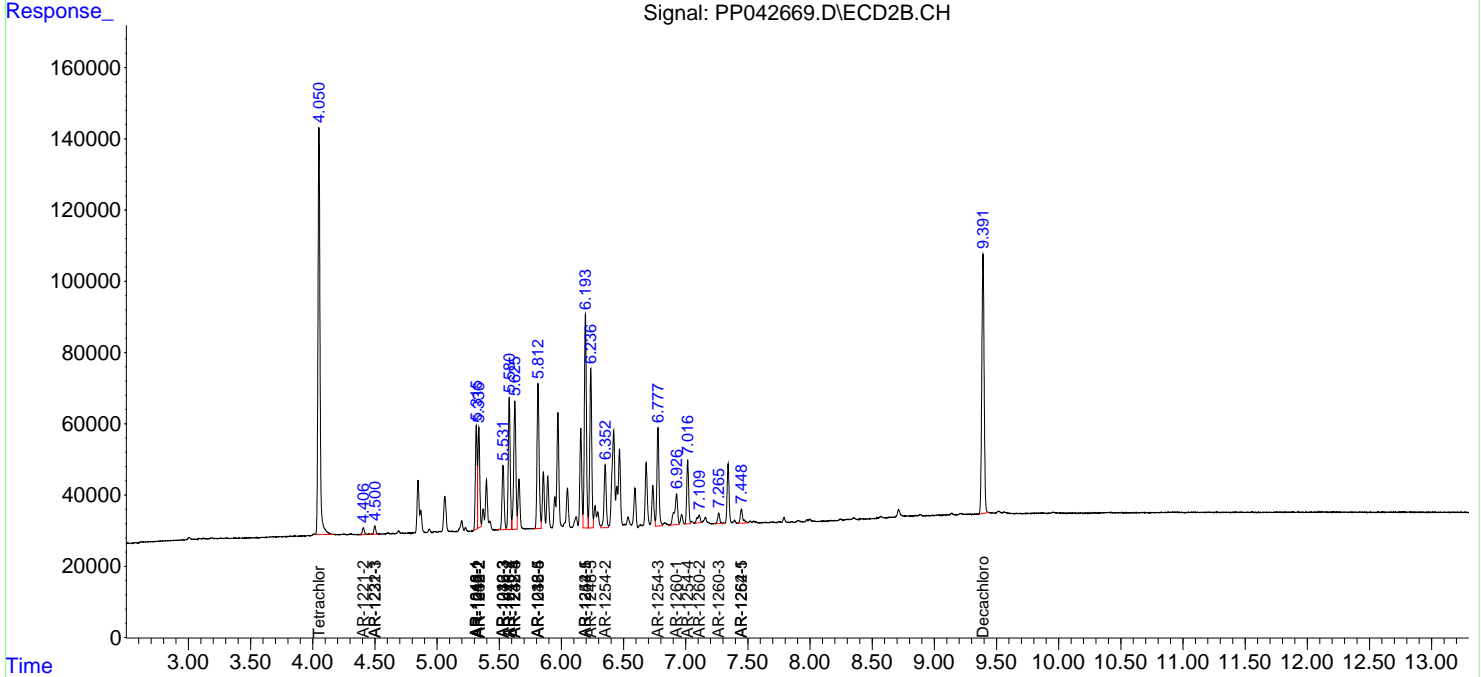
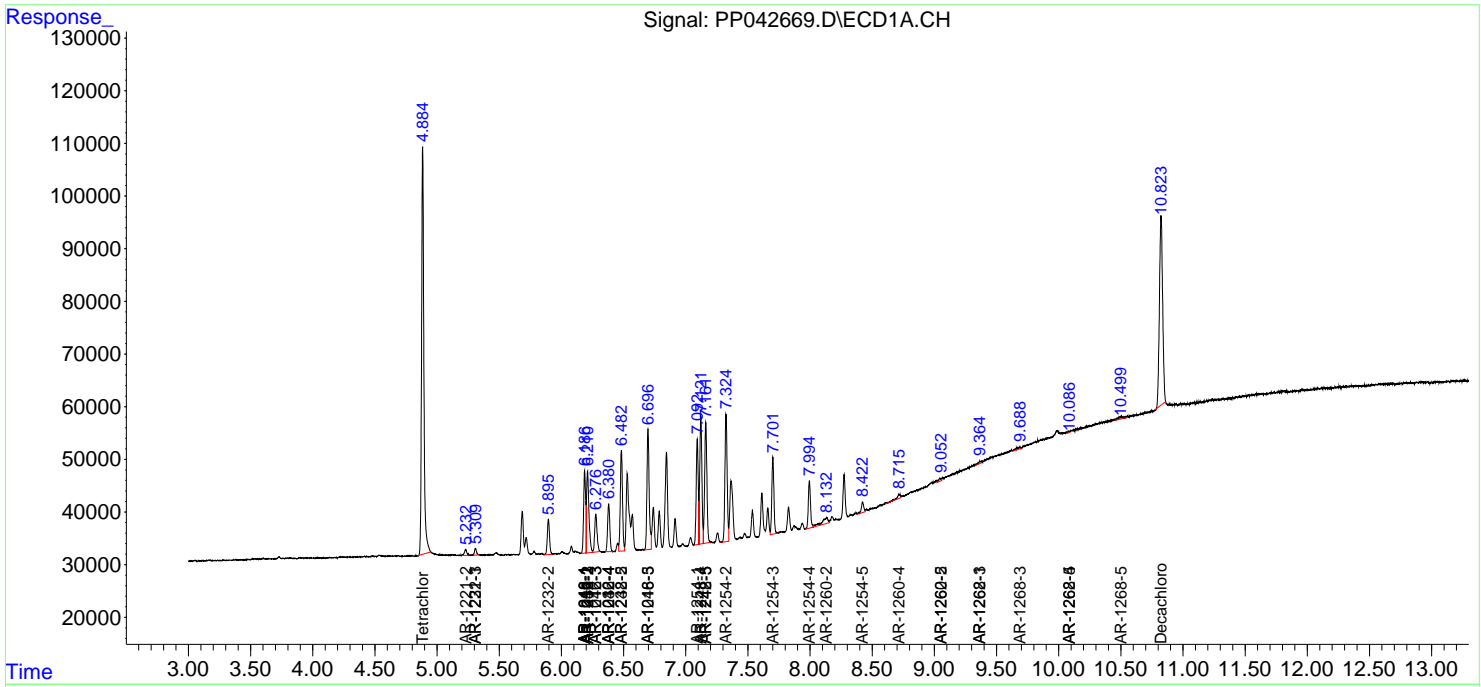
(f)=RT Delta > 1/2 Window (#)=Amounts differ by > 25% (m)=manual int.

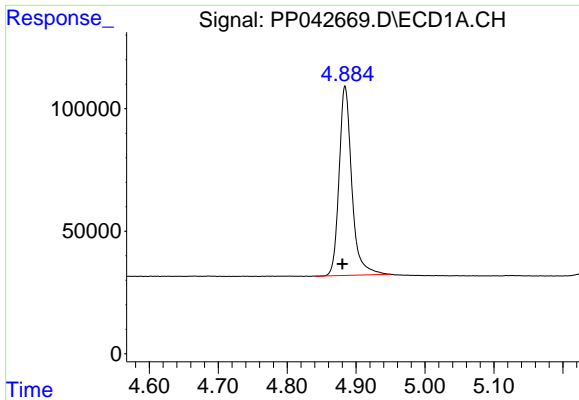
Data Path : Z:\pestpcbsrv\HPCHEM1\ECD\_P\Data\PP010622\  
 Data File : PP042669.D  
 Signal(s) : Signal #1: ECD1A.CH Signal #2: ECD2B.CH  
 Acq On : 07 Jan 2022 5:16  
 Operator : AJ\MA  
 Sample : AR1248CCC500  
 Misc :  
 ALS Vial : 5 Sample Multiplier: 1

Instrument :  
 ECD\_P  
 ClientSampleId :

Integration File signal 1: autoint1.e  
 Integration File signal 2: autoint2.e  
 Quant Time: Jan 07 05:36:46 2022  
 Quant Method : Z:\pestpcbsrv\HPCHEM1\ECD\_P\methods\PP010422.M  
 Quant Title : GC EXTRACTABLES  
 QLast Update : Wed Jan 05 12:01:35 2022  
 Response via : Initial Calibration  
 Integrator: ChemStation 6890 Scale Mode: Small noise peaks clipped

Volume Inj. : 2 µl  
 Signal #1 Phase : ZB-MR1 Signal #2 Phase: ZB-MR2  
 Signal #1 Info : 30Mx0.32mmx 0.50µ Signal #2 Info : 30M x 0.32mm x 0.25µm

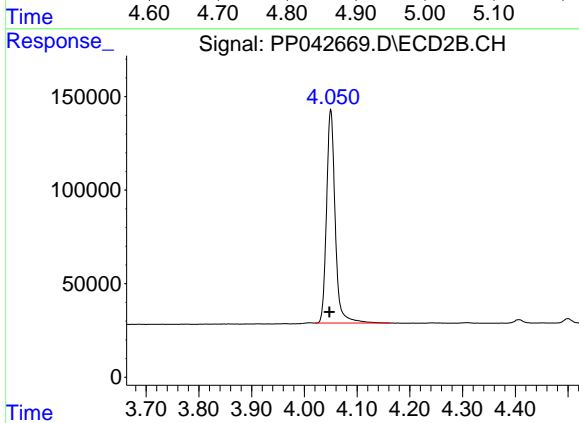




#1 Tetrachloro-m-xylene

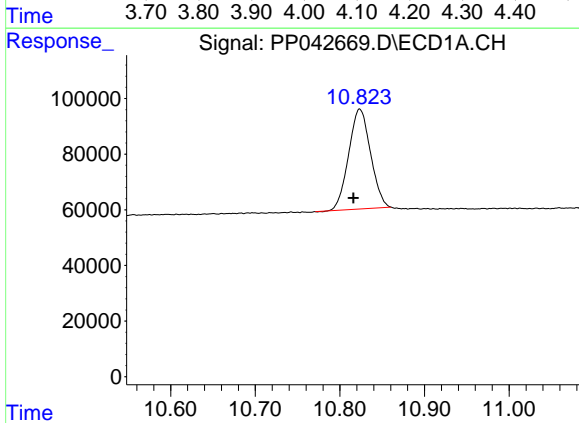
R.T.: 4.884 min  
 Delta R.T.: 0.004 min  
 Response: 988555  
 Conc: 51.03 ng/ml

Instrument :  
 ECD\_P  
 ClientSampleId :



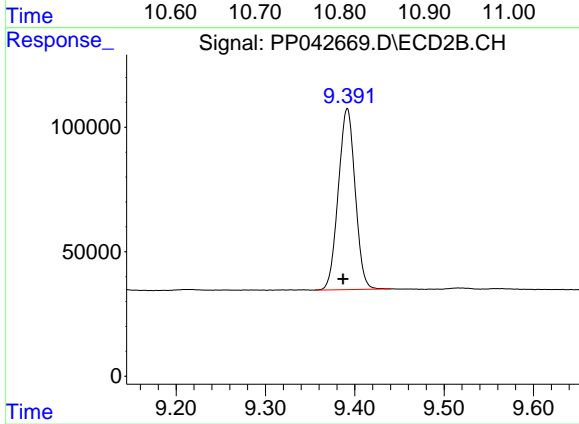
#1 Tetrachloro-m-xylene

R.T.: 4.050 min  
 Delta R.T.: 0.003 min  
 Response: 1300604  
 Conc: 49.68 ng/ml



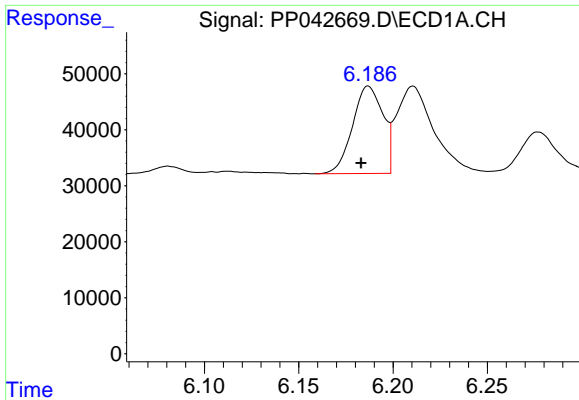
#2 Decachlorobiphenyl

R.T.: 10.823 min  
 Delta R.T.: 0.007 min  
 Response: 645233  
 Conc: 55.00 ng/ml



#2 Decachlorobiphenyl

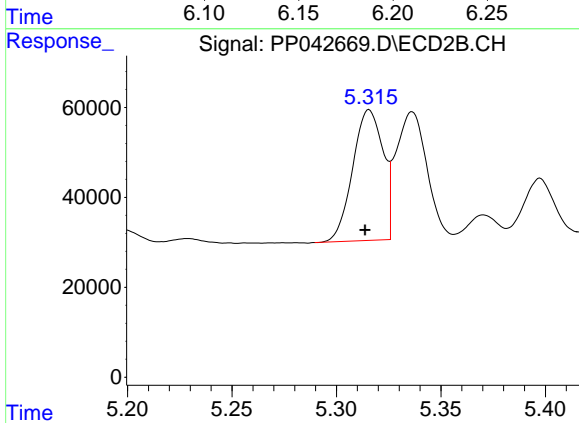
R.T.: 9.392 min  
 Delta R.T.: 0.005 min  
 Response: 953757  
 Conc: 48.53 ng/ml



#3 AR-1016-1

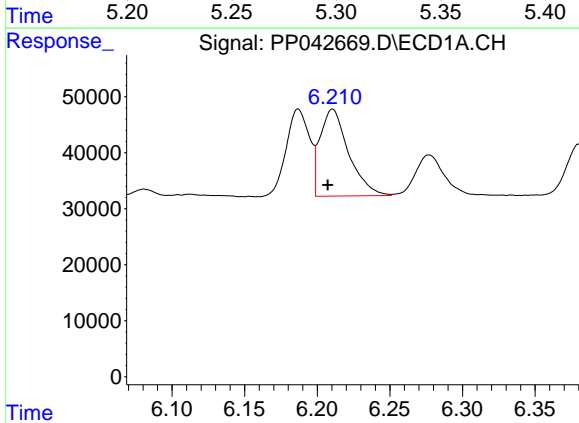
R.T.: 6.187 min  
 Delta R.T.: 0.004 min  
 Response: 174346  
 Conc: 292.16 ng/ml

Instrument :  
 ECD\_P  
 ClientSampleId :



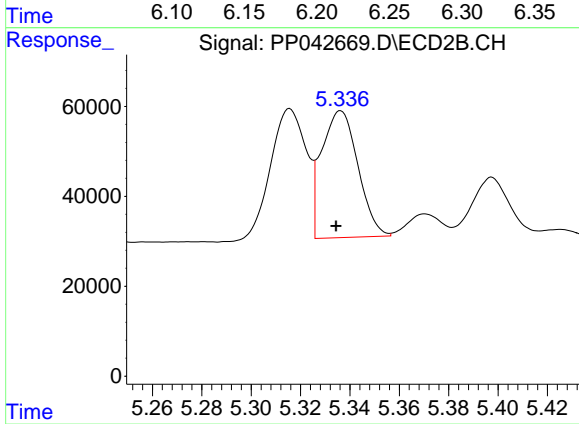
#3 AR-1016-1

R.T.: 5.316 min  
 Delta R.T.: 0.002 min  
 Response: 292594  
 Conc: 280.01 ng/ml



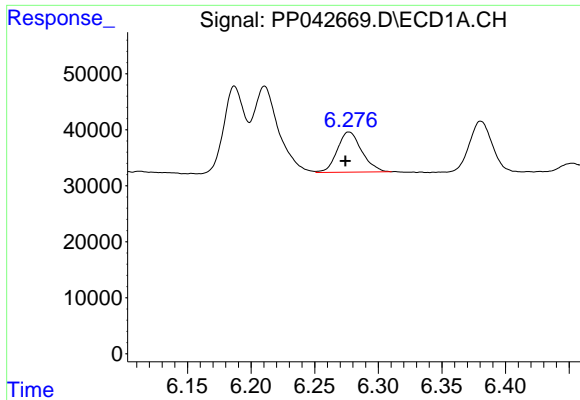
#4 AR-1016-2

R.T.: 6.211 min  
 Delta R.T.: 0.004 min  
 Response: 212304  
 Conc: 243.48 ng/ml



#4 AR-1016-2

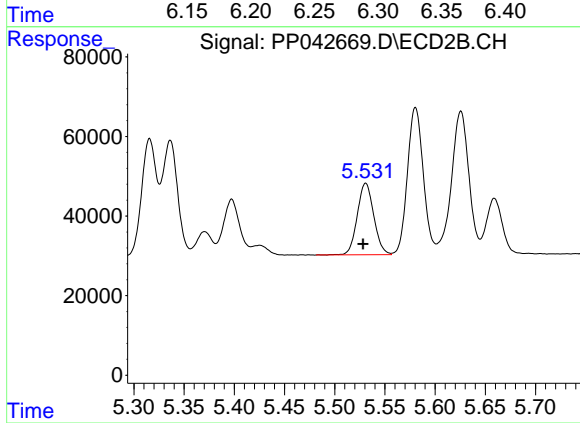
R.T.: 5.336 min  
 Delta R.T.: 0.002 min  
 Response: 288966  
 Conc: 204.26 ng/ml



#5 AR-1016-3

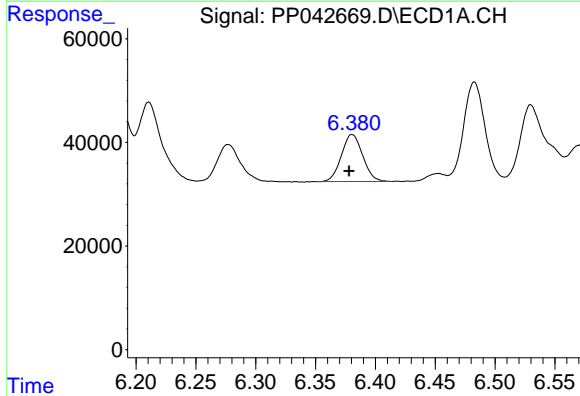
R.T.: 6.277 min  
 Delta R.T.: 0.003 min  
 Response: 96668  
 Conc: 181.53 ng/ml

Instrument :  
 ECD\_P  
 ClientSampleId :



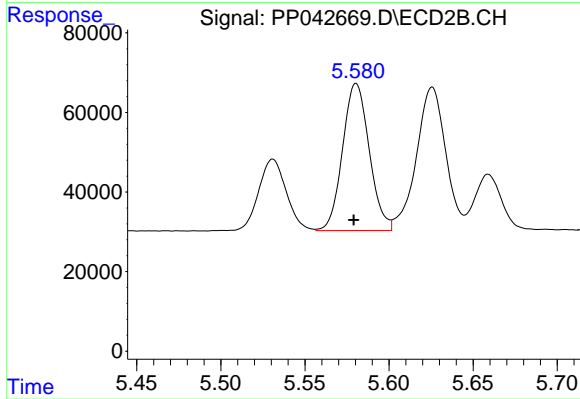
#5 AR-1016-3

R.T.: 5.531 min  
 Delta R.T.: 0.003 min  
 Response: 205949  
 Conc: 252.69 ng/ml



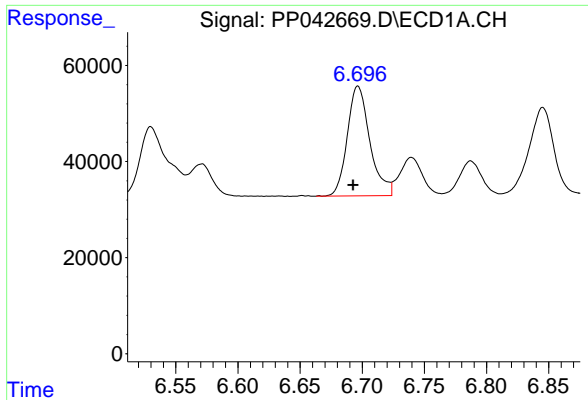
#6 AR-1016-4

R.T.: 6.380 min  
 Delta R.T.: 0.002 min  
 Response: 112143  
 Conc: 250.40 ng/ml



#6 AR-1016-4

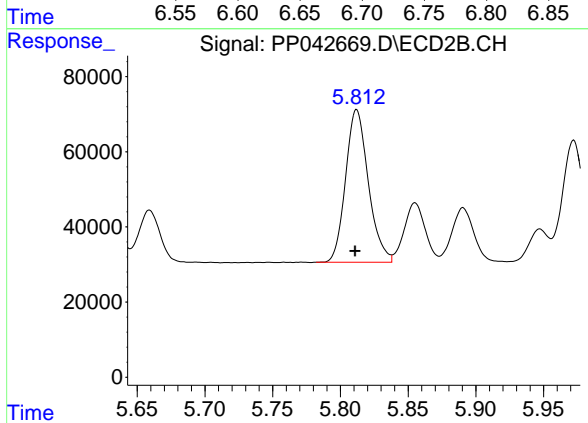
R.T.: 5.580 min  
 Delta R.T.: 0.001 min  
 Response: 408264  
 Conc: 632.35 ng/ml



#7 AR-1016-5

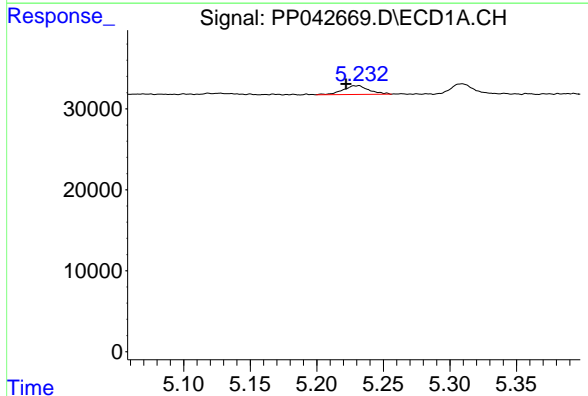
R.T.: 6.697 min  
 Delta R.T.: 0.004 min  
 Response: 289270  
 Conc: 669.68 ng/ml

Instrument :  
 ECD\_P  
 ClientSampleId :



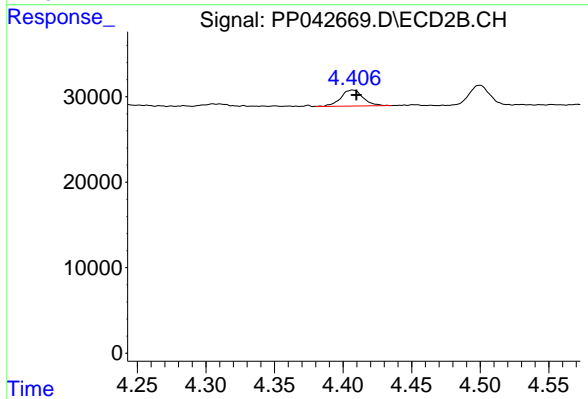
#7 AR-1016-5

R.T.: 5.812 min  
 Delta R.T.: 0.001 min  
 Response: 475076  
 Conc: 578.49 ng/ml



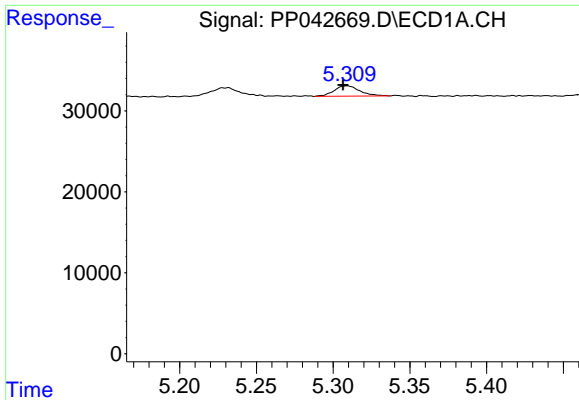
#9 AR-1221-2

R.T.: 5.232 min  
 Delta R.T.: 0.010 min  
 Response: 14700  
 Conc: 92.91 ng/ml



#9 AR-1221-2

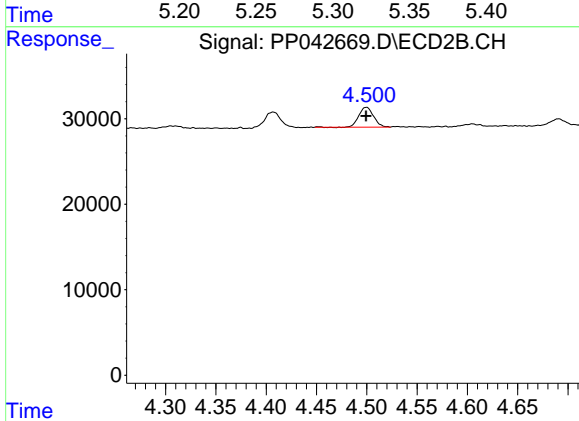
R.T.: 4.407 min  
 Delta R.T.: -0.003 min  
 Response: 21445  
 Conc: 79.86 ng/ml



#10 AR-1221-3

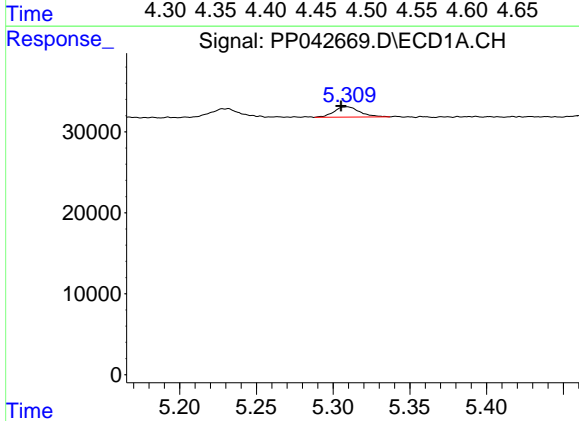
R.T.: 5.309 min  
 Delta R.T.: 0.003 min  
 Response: 14816  
 Conc: 28.58 ng/ml

Instrument :  
 ECD\_P  
 ClientSampleId :



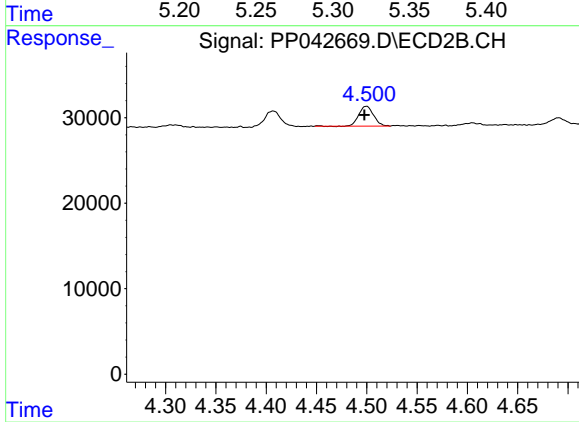
#10 AR-1221-3

R.T.: 4.500 min  
 Delta R.T.: 0.000 min  
 Response: 23548  
 Conc: 28.59 ng/ml



#11 AR-1232-1

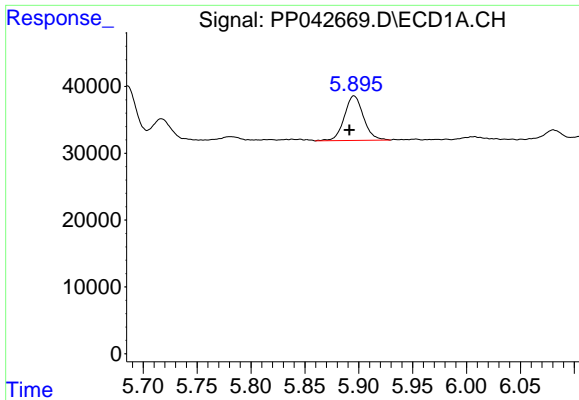
R.T.: 5.309 min  
 Delta R.T.: 0.004 min  
 Response: 14816  
 Conc: 35.09 ng/ml



#11 AR-1232-1

R.T.: 4.500 min  
 Delta R.T.: 0.002 min  
 Response: 23548  
 Conc: 35.49 ng/ml

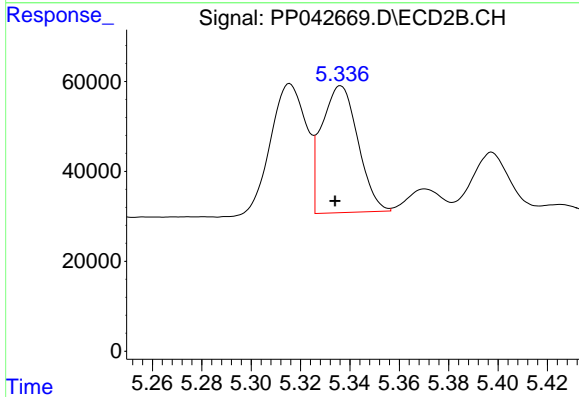




#12 AR-1232-2

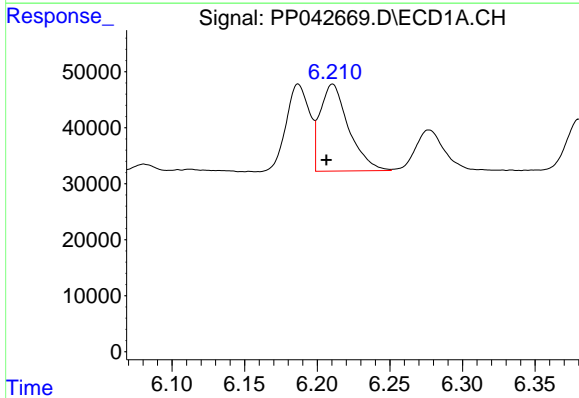
R.T.: 5.896 min  
 Delta R.T.: 0.004 min  
 Response: 82427  
 Conc: 424.54 ng/ml

Instrument :  
 ECD\_P  
 ClientSampleId :



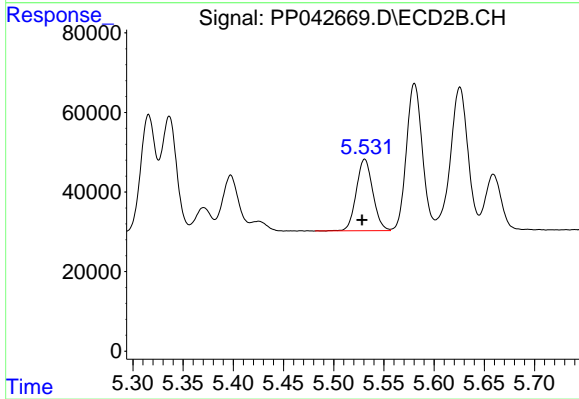
#12 AR-1232-2

R.T.: 5.336 min  
 Delta R.T.: 0.002 min  
 Response: 288966  
 Conc: 485.62 ng/ml



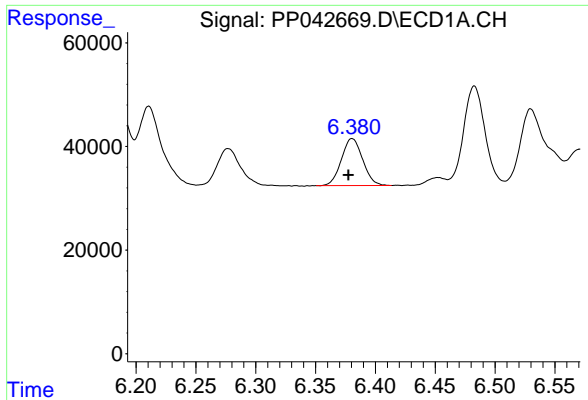
#13 AR-1232-3

R.T.: 6.211 min  
 Delta R.T.: 0.004 min  
 Response: 212304  
 Conc: 595.69 ng/ml



#13 AR-1232-3

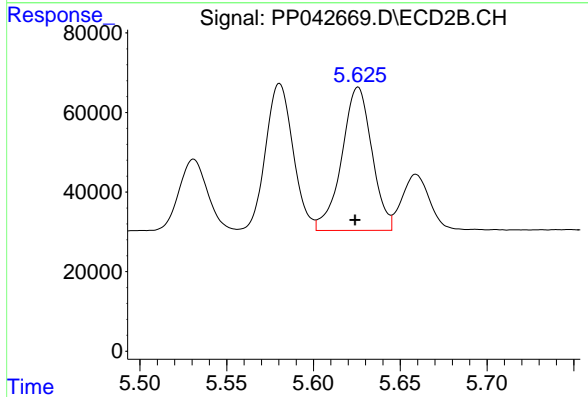
R.T.: 5.531 min  
 Delta R.T.: 0.003 min  
 Response: 205949  
 Conc: 630.07 ng/ml



#14 AR-1232-4

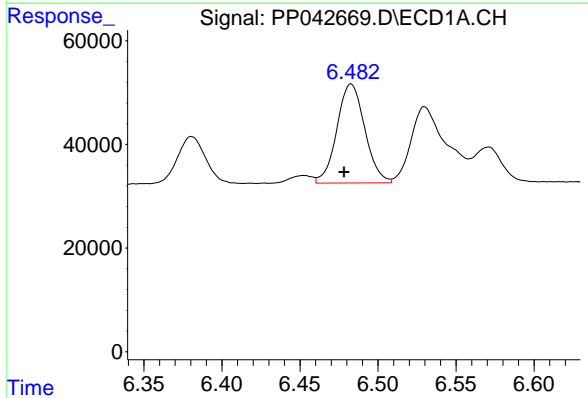
R.T.: 6.380 min  
 Delta R.T.: 0.003 min  
 Response: 112143  
 Conc: 632.70 ng/ml

Instrument :  
 ECD\_P  
 ClientSampleId :



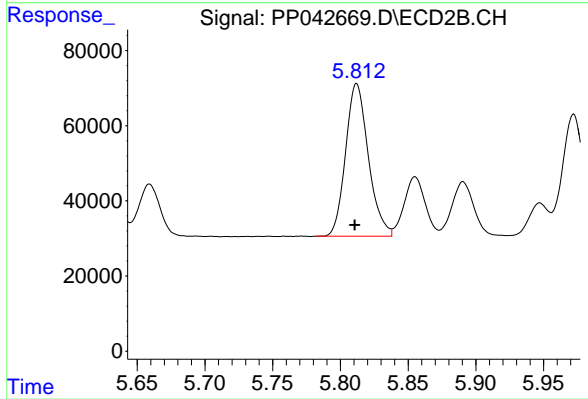
#14 AR-1232-4

R.T.: 5.626 min  
 Delta R.T.: 0.002 min  
 Response: 435910  
 Conc: 1480.10 ng/ml



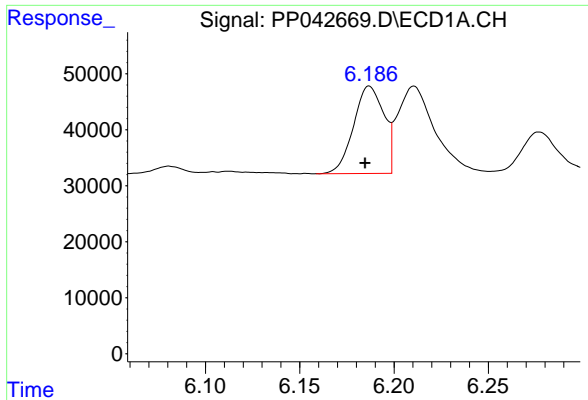
#15 AR-1232-5

R.T.: 6.483 min  
 Delta R.T.: 0.004 min  
 Response: 237970  
 Conc: 1916.30 ng/ml



#15 AR-1232-5

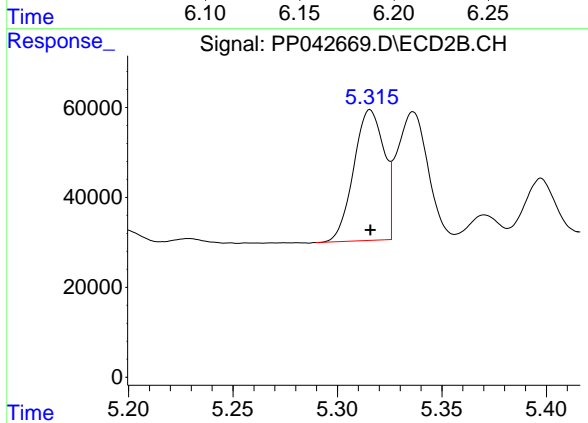
R.T.: 5.812 min  
 Delta R.T.: 0.002 min  
 Response: 475076  
 Conc: 1484.35 ng/ml



#16 AR-1242-1

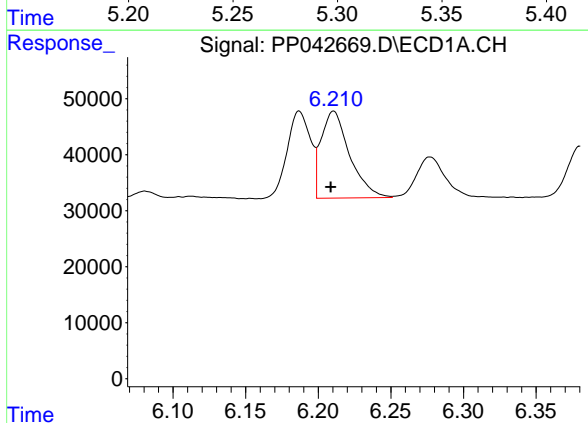
R.T.: 6.187 min  
 Delta R.T.: 0.002 min  
 Response: 174346  
 Conc: 378.01 ng/ml

Instrument :  
 ECD\_P  
 ClientSampleId :



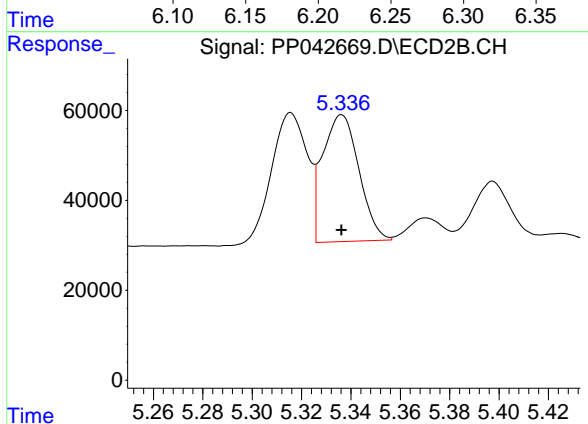
#16 AR-1242-1

R.T.: 5.316 min  
 Delta R.T.: 0.000 min  
 Response: 292594  
 Conc: 353.22 ng/ml



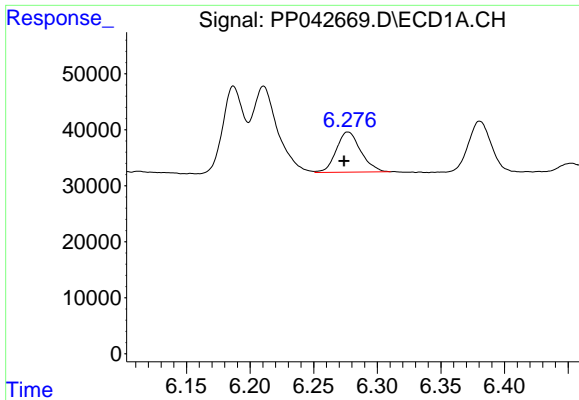
#17 AR-1242-2

R.T.: 6.211 min  
 Delta R.T.: 0.002 min  
 Response: 212304  
 Conc: 317.98 ng/ml



#17 AR-1242-2

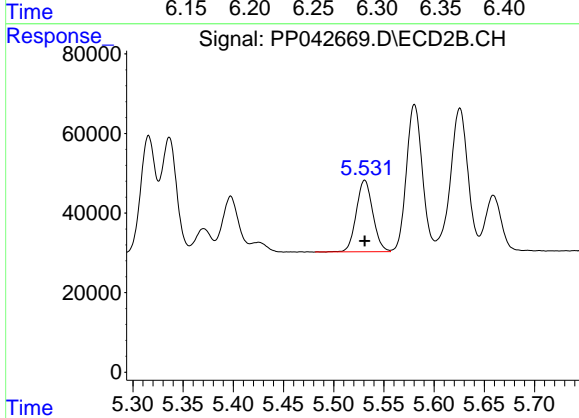
R.T.: 5.336 min  
 Delta R.T.: 0.000 min  
 Response: 288966  
 Conc: 258.30 ng/ml



#18 AR-1242-3

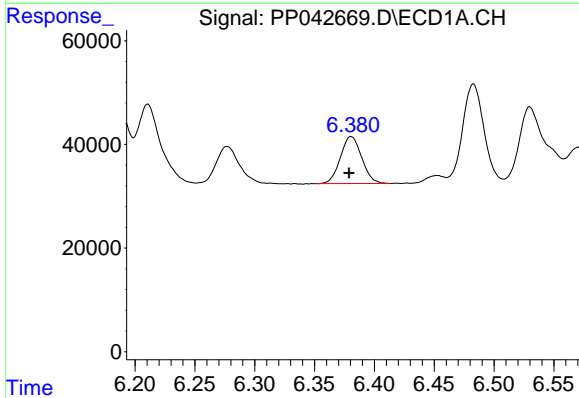
R.T.: 6.277 min  
 Delta R.T.: 0.003 min  
 Response: 96668  
 Conc: 242.50 ng/ml

Instrument :  
 ECD\_P  
 ClientSampleId :



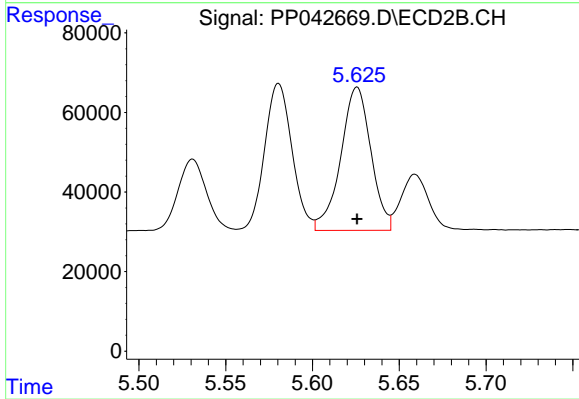
#18 AR-1242-3

R.T.: 5.531 min  
 Delta R.T.: 0.000 min  
 Response: 205949  
 Conc: 318.46 ng/ml



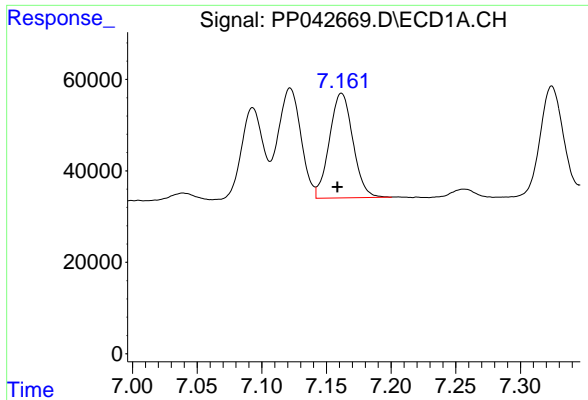
#19 AR-1242-4

R.T.: 6.380 min  
 Delta R.T.: 0.002 min  
 Response: 112143  
 Conc: 335.85 ng/ml



#19 AR-1242-4

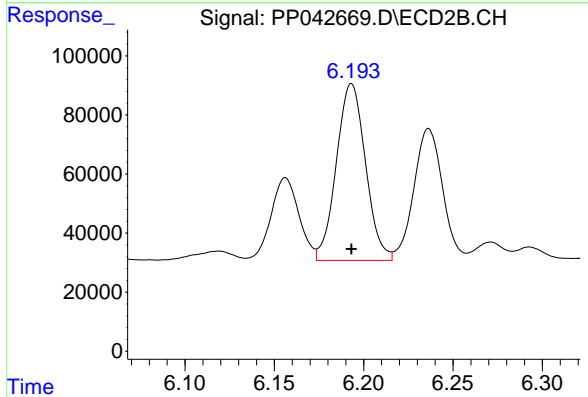
R.T.: 5.626 min  
 Delta R.T.: 0.000 min  
 Response: 435910  
 Conc: 695.64 ng/ml



#20 AR-1242-5

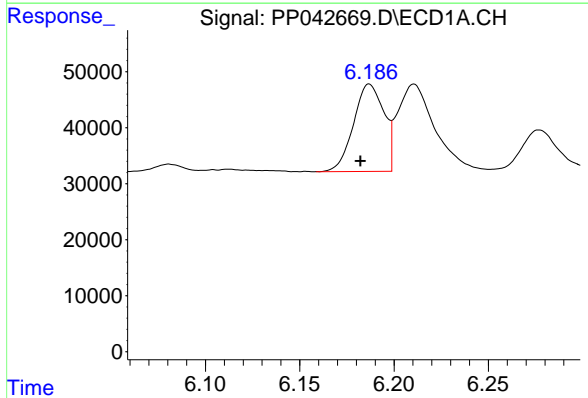
R.T.: 7.162 min  
 Delta R.T.: 0.003 min  
 Response: 289648  
 Conc: 878.92 ng/ml

Instrument :  
 ECD\_P  
 ClientSampleId :



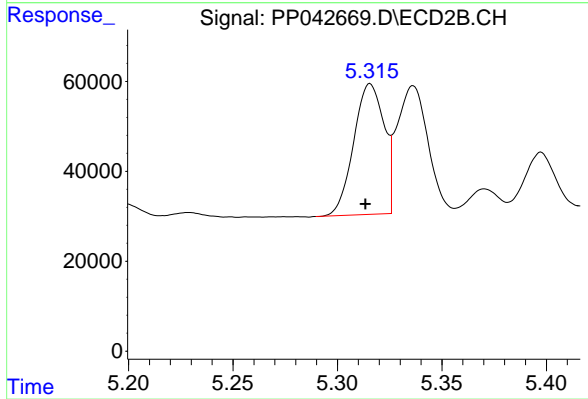
#20 AR-1242-5

R.T.: 6.193 min  
 Delta R.T.: 0.000 min  
 Response: 679583  
 Conc: 926.53 ng/ml



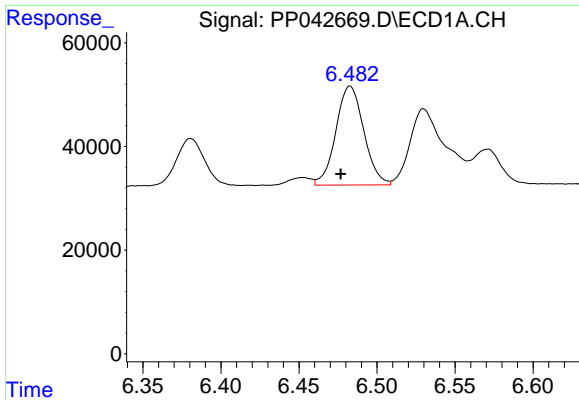
#21 AR-1248-1

R.T.: 6.187 min  
 Delta R.T.: 0.005 min  
 Response: 174346  
 Conc: 515.17 ng/ml



#21 AR-1248-1

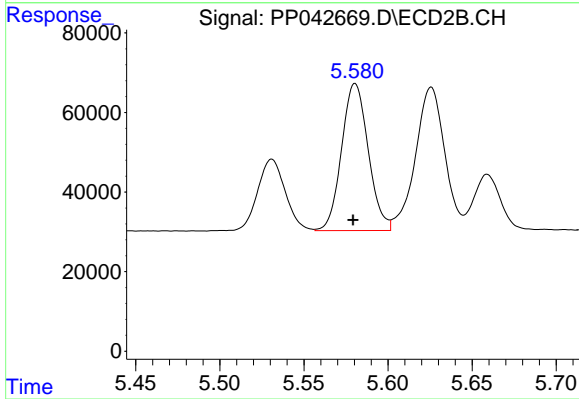
R.T.: 5.316 min  
 Delta R.T.: 0.002 min  
 Response: 292594  
 Conc: 480.85 ng/ml



#22 AR-1248-2

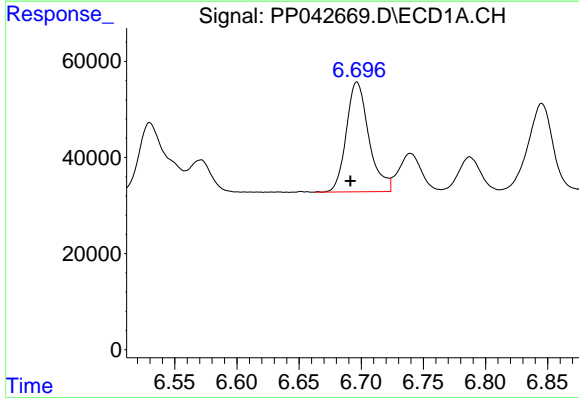
R.T.: 6.483 min  
 Delta R.T.: 0.006 min  
 Response: 237970  
 Conc: 516.14 ng/ml

Instrument :  
 ECD\_P  
 ClientSampleId :



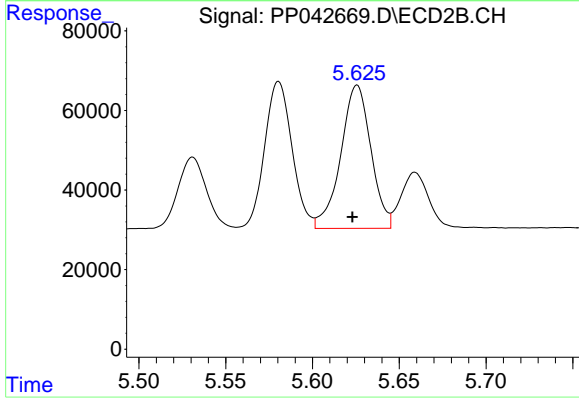
#22 AR-1248-2

R.T.: 5.580 min  
 Delta R.T.: 0.001 min  
 Response: 408264  
 Conc: 479.51 ng/ml



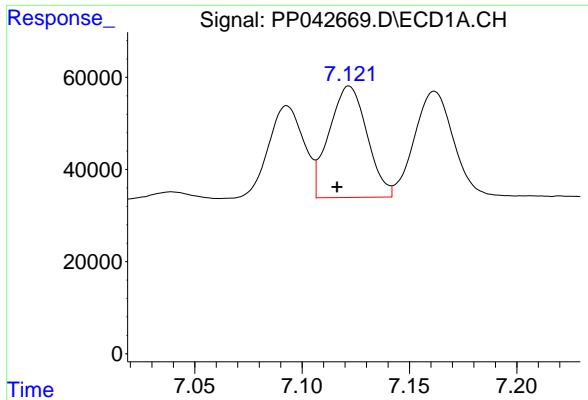
#23 AR-1248-3

R.T.: 6.697 min  
 Delta R.T.: 0.005 min  
 Response: 289270  
 Conc: 508.40 ng/ml



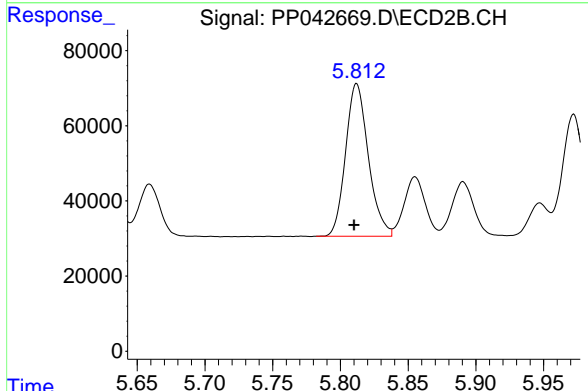
#23 AR-1248-3

R.T.: 5.626 min  
 Delta R.T.: 0.003 min  
 Response: 435910  
 Conc: 482.51 ng/ml

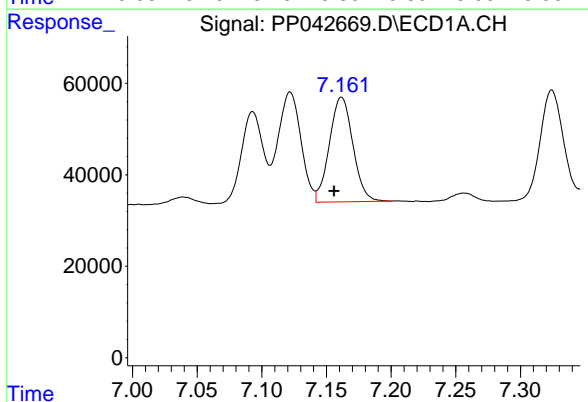


#24 AR-1248-4  
 R.T.: 7.122 min  
 Delta R.T.: 0.006 min  
 Response: 297603  
 Conc: 532.17 ng/ml

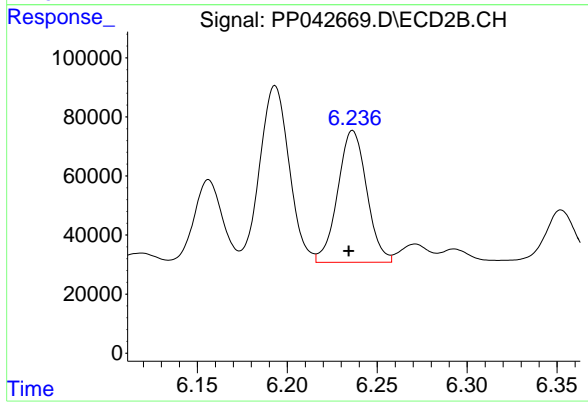
Instrument :  
 ECD\_P  
 ClientSampleId :



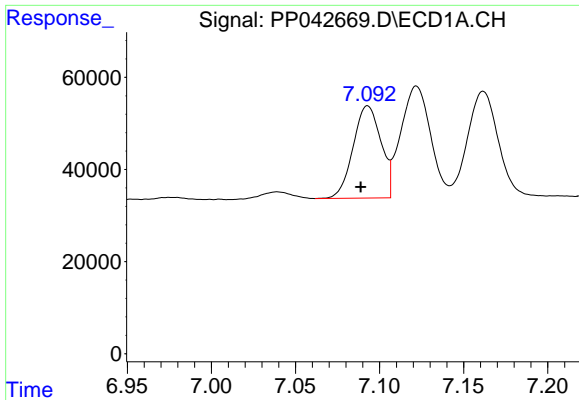
#24 AR-1248-4  
 R.T.: 5.812 min  
 Delta R.T.: 0.002 min  
 Response: 475076  
 Conc: 453.85 ng/ml



#25 AR-1248-5  
 R.T.: 7.162 min  
 Delta R.T.: 0.006 min  
 Response: 289648  
 Conc: 528.67 ng/ml



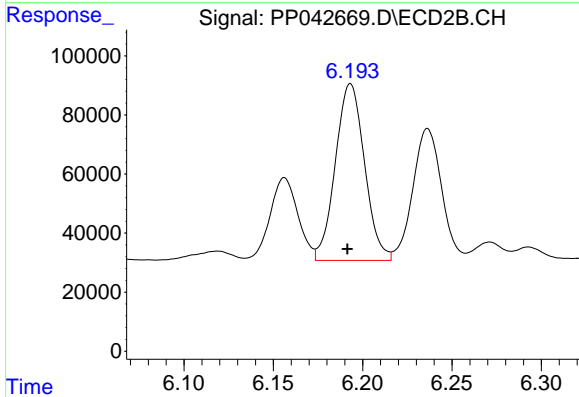
#25 AR-1248-5  
 R.T.: 6.236 min  
 Delta R.T.: 0.002 min  
 Response: 500628  
 Conc: 504.58 ng/ml



#26 AR-1254-1

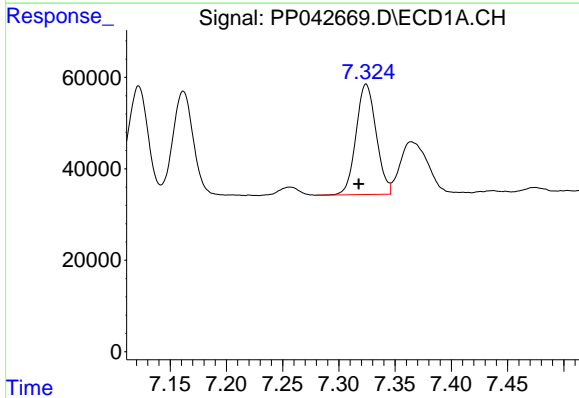
R.T.: 7.093 min  
 Delta R.T.: 0.004 min  
 Response: 230296  
 Conc: 378.03 ng/ml

Instrument :  
 ECD\_P  
 ClientSampleId :



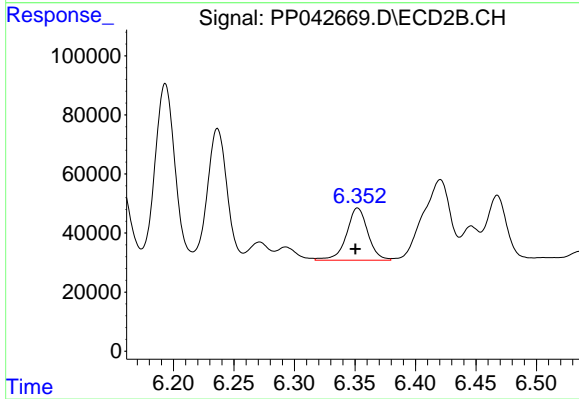
#26 AR-1254-1

R.T.: 6.193 min  
 Delta R.T.: 0.002 min  
 Response: 679583  
 Conc: 441.34 ng/ml



#27 AR-1254-2

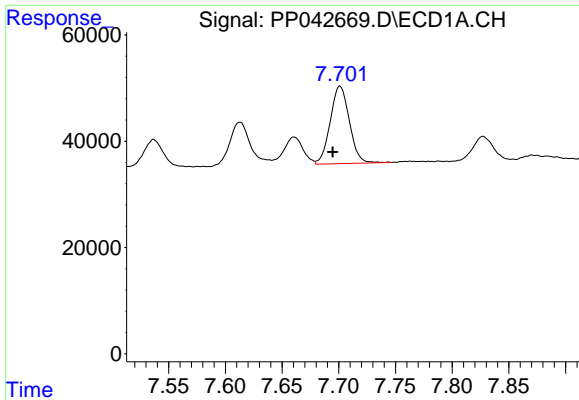
R.T.: 7.324 min  
 Delta R.T.: 0.007 min  
 Response: 301675  
 Conc: 328.50 ng/ml



#27 AR-1254-2

R.T.: 6.352 min  
 Delta R.T.: 0.002 min  
 Response: 217506  
 Conc: 161.83 ng/ml

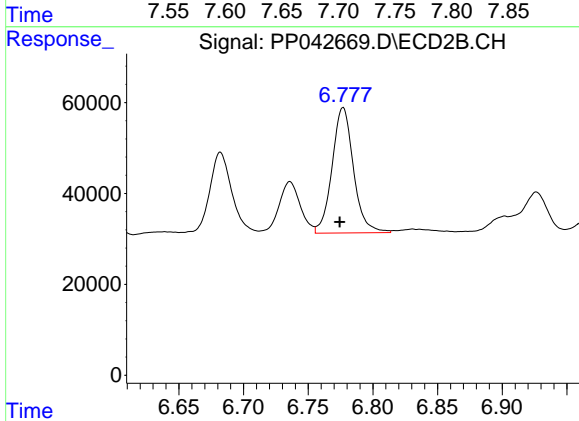




#28 AR-1254-3

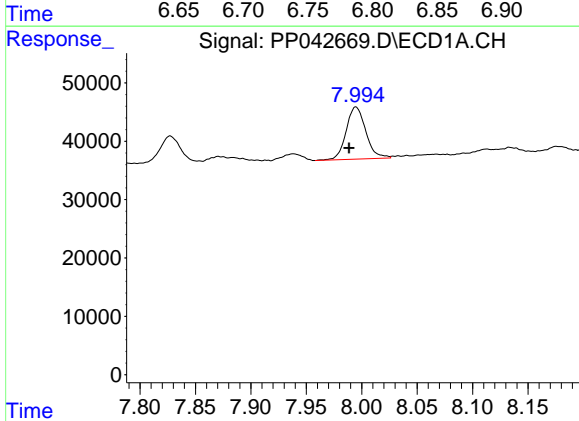
R.T.: 7.701 min  
 Delta R.T.: 0.006 min  
 Response: 171129  
 Conc: 186.81 ng/ml

Instrument :  
 ECD\_P  
 ClientSampleId :



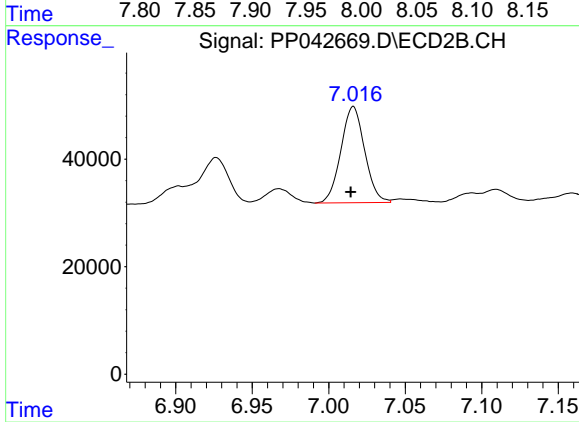
#28 AR-1254-3

R.T.: 6.777 min  
 Delta R.T.: 0.003 min  
 Response: 317689  
 Conc: 152.10 ng/ml



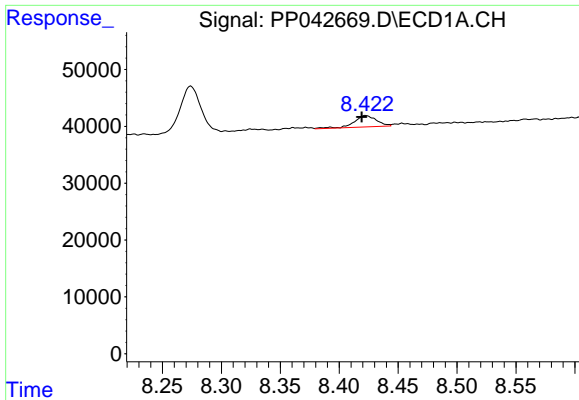
#29 AR-1254-4

R.T.: 7.995 min  
 Delta R.T.: 0.006 min  
 Response: 110321  
 Conc: 184.18 ng/ml



#29 AR-1254-4

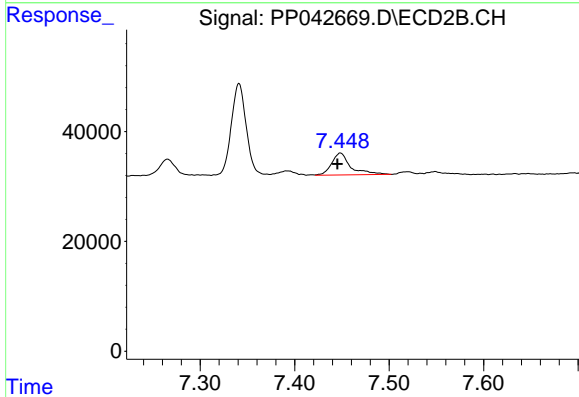
R.T.: 7.016 min  
 Delta R.T.: 0.002 min  
 Response: 193766  
 Conc: 158.33 ng/ml



#30 AR-1254-5

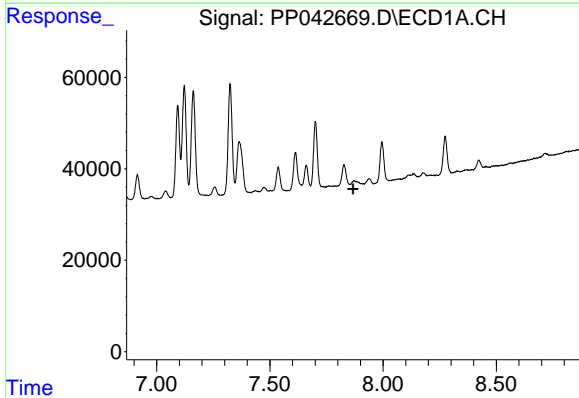
R.T.: 8.422 min  
 Delta R.T.: 0.003 min  
 Response: 26626  
 Conc: 42.11 ng/ml

Instrument :  
 ECD\_P  
 ClientSampleId :



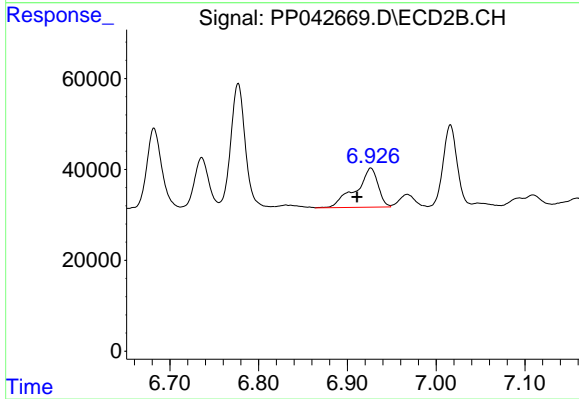
#30 AR-1254-5

R.T.: 7.448 min  
 Delta R.T.: 0.003 min  
 Response: 55869  
 Conc: 34.02 ng/ml



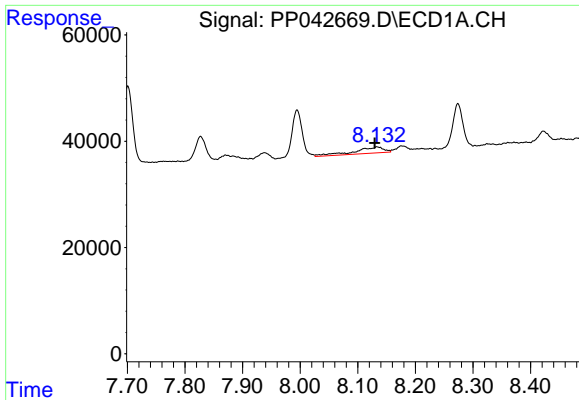
#31 AR-1260-1

R.T.: 7.871 min  
 Delta R.T.: 0.004 min  
 Response: -3087  
 Conc: N.D.



#31 AR-1260-1

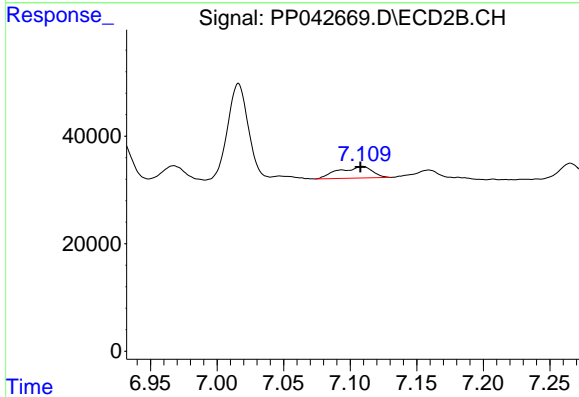
R.T.: 6.926 min  
 Delta R.T.: 0.015 min  
 Response: 150534  
 Conc: 115.69 ng/ml



#32 AR-1260-2

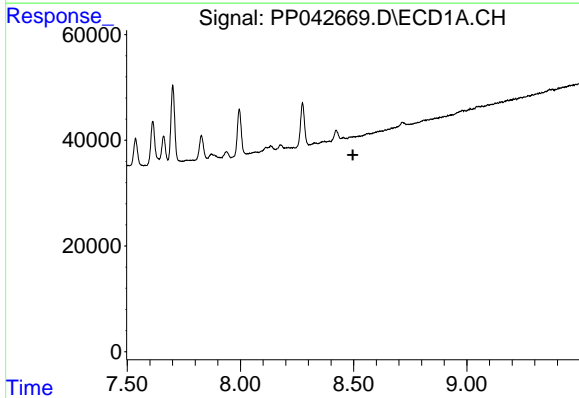
R.T.: 8.133 min  
 Delta R.T.: 0.004 min  
 Response: 40024  
 Conc: 56.90 ng/ml

Instrument :  
 ECD\_P  
 ClientSampleId :



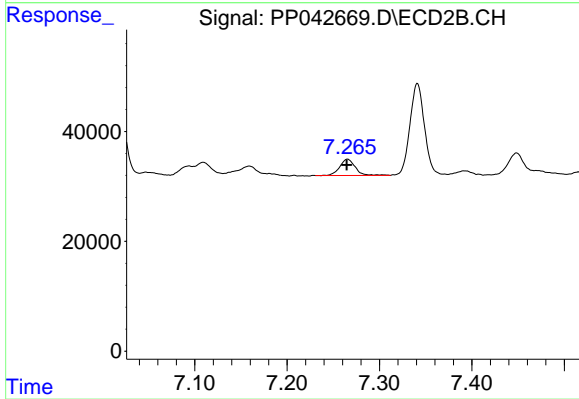
#32 AR-1260-2

R.T.: 7.109 min  
 Delta R.T.: 0.002 min  
 Response: 37716  
 Conc: 24.81 ng/ml



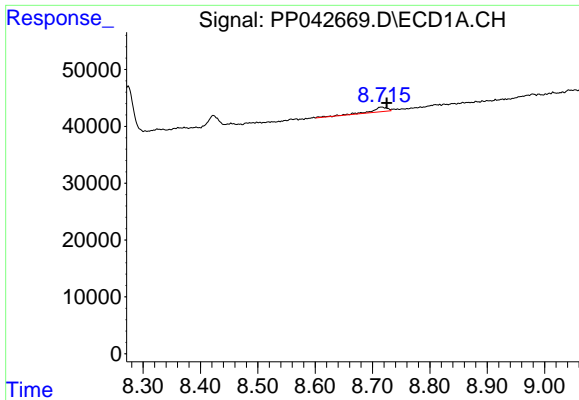
#33 AR-1260-3

R.T.: 0.000 min  
 Exp R.T. : 8.497 min  
 Response: 0  
 Conc: N.D.



#33 AR-1260-3

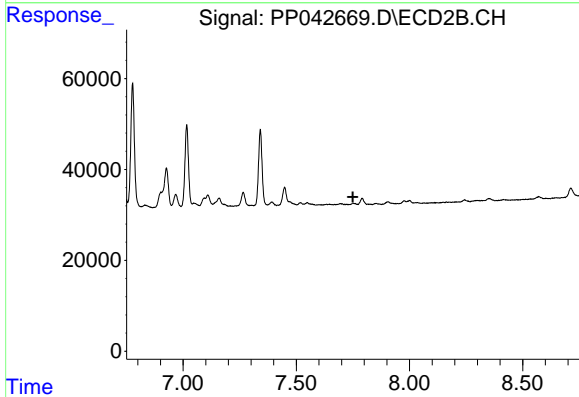
R.T.: 7.265 min  
 Delta R.T.: 0.000 min  
 Response: 34717  
 Conc: 24.28 ng/ml



#34 AR-1260-4

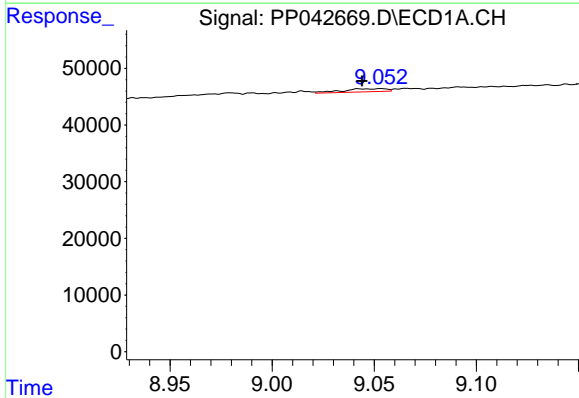
R.T.: 8.716 min  
 Delta R.T.: -0.009 min  
 Response: 16465  
 Conc: 24.96 ng/ml

Instrument :  
 ECD\_P  
 ClientSampleId :



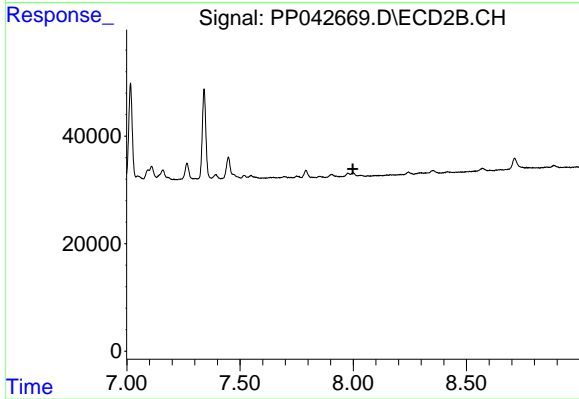
#34 AR-1260-4

R.T.: 0.000 min  
 Exp R.T. : 7.750 min  
 Response: 0  
 Conc: N.D.



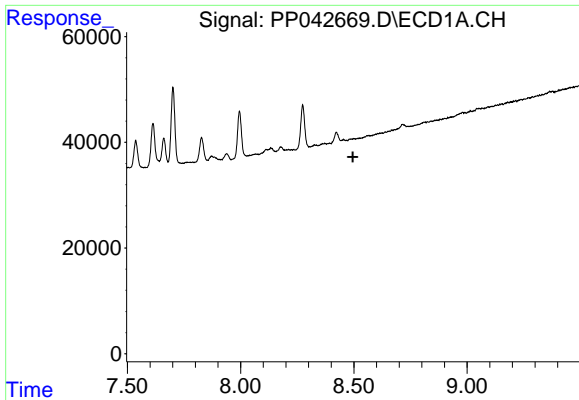
#35 AR-1260-5

R.T.: 9.053 min  
 Delta R.T.: 0.009 min  
 Response: 8165  
 Conc: 6.77 ng/ml



#35 AR-1260-5

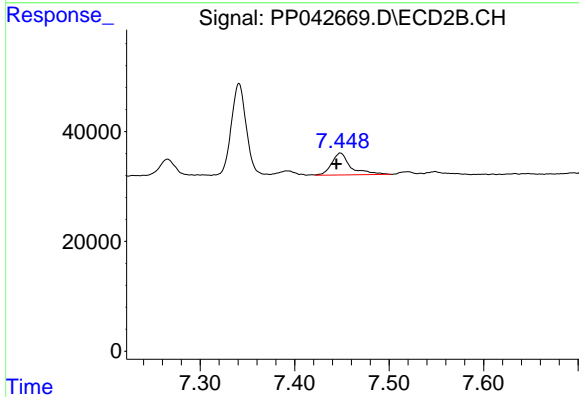
R.T.: 0.000 min  
 Exp R.T. : 7.998 min  
 Response: 0  
 Conc: N.D.



#36 AR-1262-1

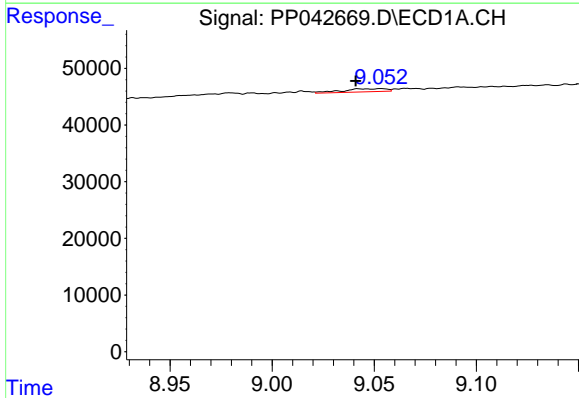
R.T.: 0.000 min  
 Exp R.T.: 8.495 min  
 Response: 0  
 Conc: N.D.

Instrument :  
 ECD\_P  
 ClientSampleId :



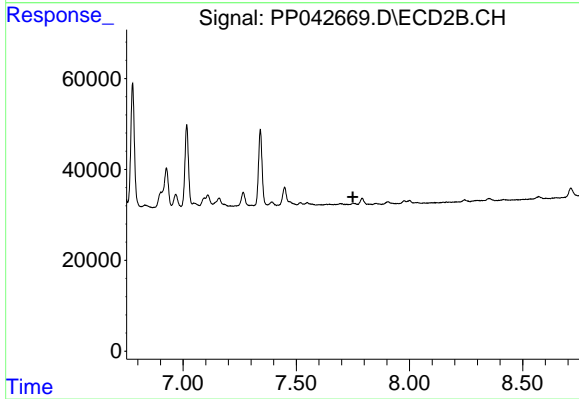
#36 AR-1262-1

R.T.: 7.448 min  
 Delta R.T.: 0.004 min  
 Response: 55869  
 Conc: 64.36 ng/ml



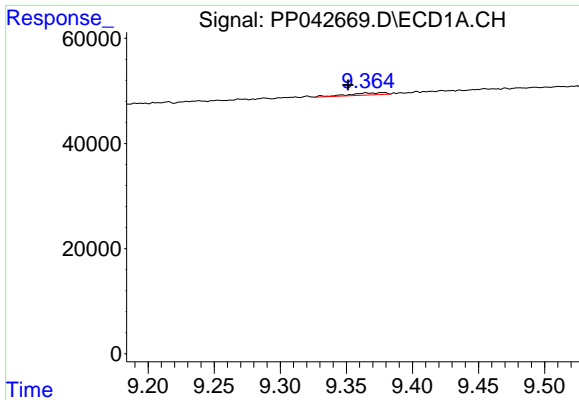
#37 AR-1262-2

R.T.: 9.053 min  
 Delta R.T.: 0.012 min  
 Response: 8165  
 Conc: 6.11 ng/ml



#37 AR-1262-2

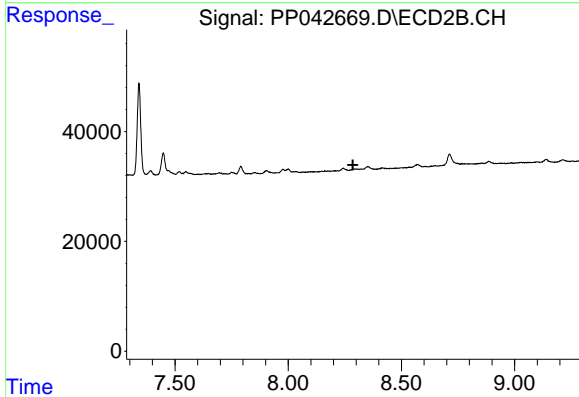
R.T.: 0.000 min  
 Exp R.T.: 7.750 min  
 Response: 0  
 Conc: N.D.



#38 AR-1262-3

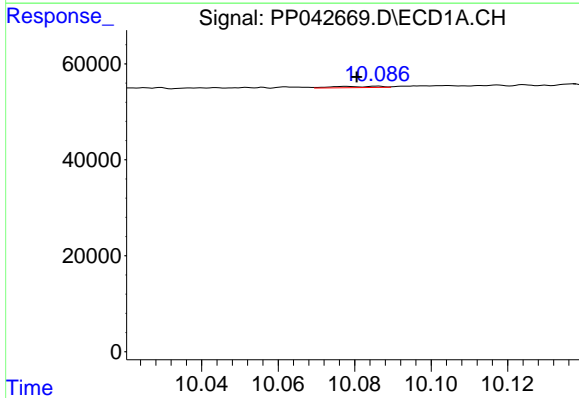
R.T.: 9.365 min  
 Delta R.T.: 0.014 min  
 Response: 7832  
 Conc: 11.88 ng/ml

Instrument :  
 ECD\_P  
 ClientSampleId :



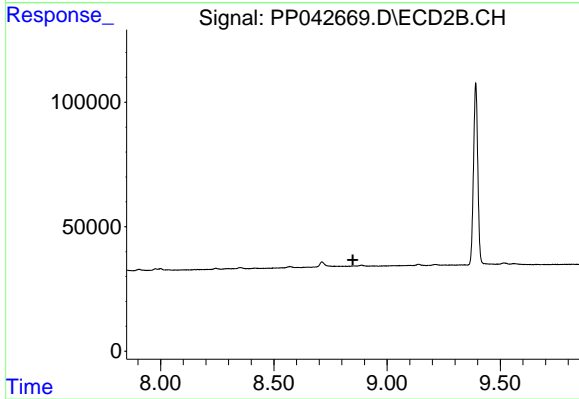
#38 AR-1262-3

R.T.: 0.000 min  
 Exp R.T. : 8.286 min  
 Response: 0  
 Conc: N.D.



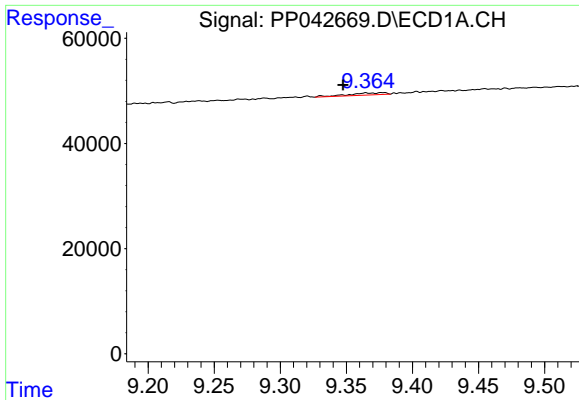
#40 AR-1262-5

R.T.: 10.078 min  
 Delta R.T.: -0.003 min  
 Response: 2366  
 Conc: 4.85 ng/ml



#40 AR-1262-5

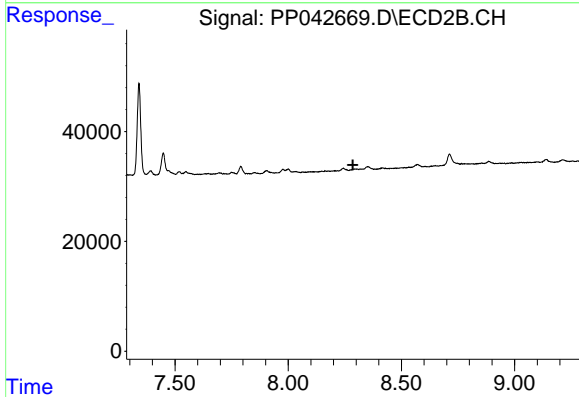
R.T.: 0.000 min  
 Exp R.T. : 8.849 min  
 Response: 0  
 Conc: N.D.



#41 AR-1268-1

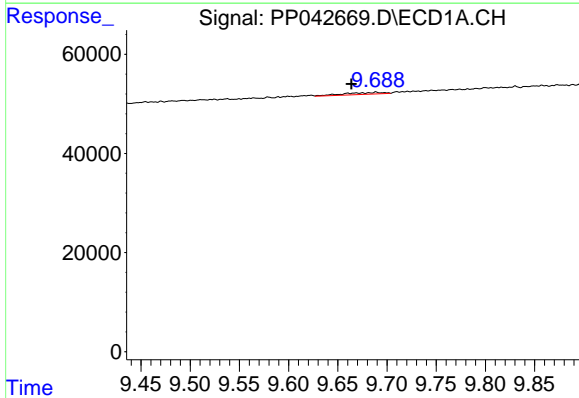
R.T.: 9.365 min  
 Delta R.T.: 0.017 min  
 Response: 7832  
 Conc: 4.79 ng/ml

Instrument :  
 ECD\_P  
 ClientSampleId :



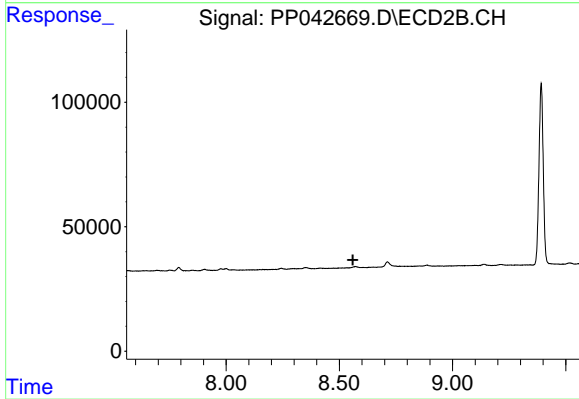
#41 AR-1268-1

R.T.: 0.000 min  
 Exp R.T. : 8.286 min  
 Response: 0  
 Conc: N.D.



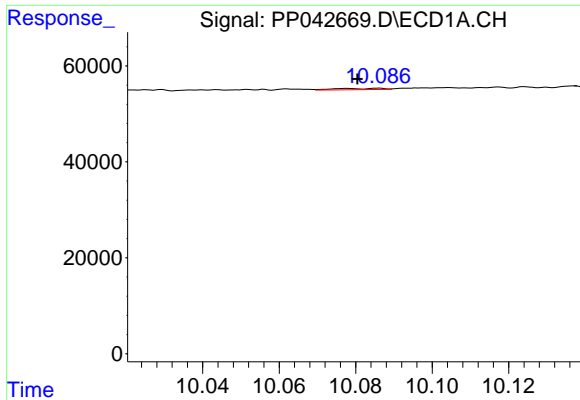
#43 AR-1268-3

R.T.: 9.689 min  
 Delta R.T.: 0.025 min  
 Response: 10183  
 Conc: 7.57 ng/ml



#43 AR-1268-3

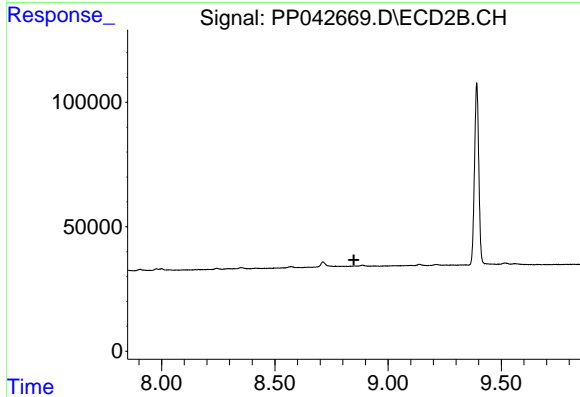
R.T.: 0.000 min  
 Exp R.T. : 8.560 min  
 Response: 0  
 Conc: N.D.



#44 AR-1268-4

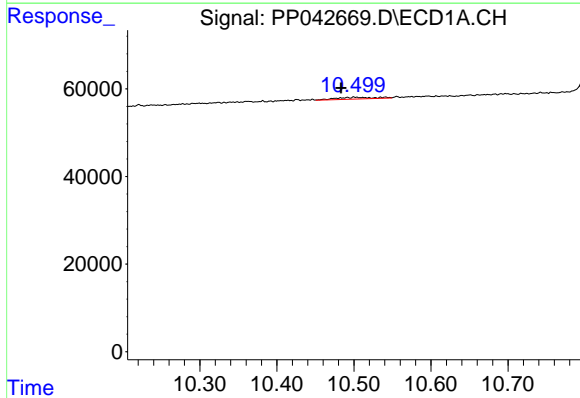
R.T.: 10.078 min  
 Delta R.T.: -0.003 min  
 Response: 2366  
 Conc: 4.32 ng/ml

Instrument :  
 ECD\_P  
 ClientSampleId :



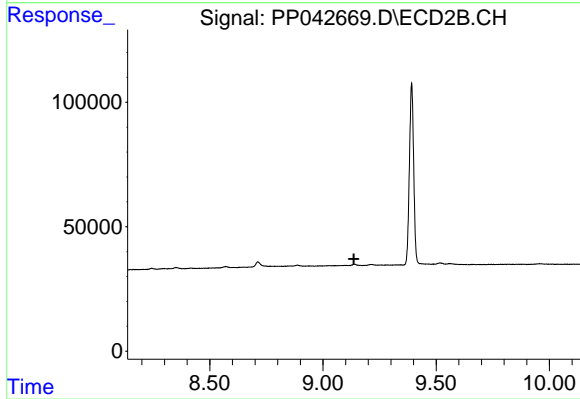
#44 AR-1268-4

R.T.: 0.000 min  
 Exp R.T. : 8.849 min  
 Response: 0  
 Conc: N.D.



#45 AR-1268-5

R.T.: 10.500 min  
 Delta R.T.: 0.017 min  
 Response: 13671  
 Conc: 3.06 ng/ml



#45 AR-1268-5

R.T.: 0.000 min  
 Exp R.T. : 9.137 min  
 Response: 0  
 Conc: N.D.