

Data Path : Z:\pestpcbsrv\HPCHEM1\ECD_P\Data\PP010625\
 Data File : PP068924.D
 Signal(s) : Signal #1: ECD1A.ch Signal #2: ECD2B.ch
 Acq On : 06 Jan 2025 22:24
 Operator : YP\AJ
 Sample : AR1242ICC500
 Misc :
 ALS Vial : 12 Sample Multiplier: 1

Instrument :
 ECD_P
ClientSampleId :
 AR1242ICC500

Integration File signal 1: autoint1.e
 Integration File signal 2: autoint2.e
 Quant Time: Jan 07 10:45:03 2025
 Quant Method : Z:\pestpcbsrv\HPCHEM1\ECD_P\methods\PP010625.M
 Quant Title : GC EXTRACTABLES
 QLast Update : Tue Jan 07 10:44:41 2025
 Response via : Initial Calibration
 Integrator: ChemStation

Volume Inj. : 2 µl
 Signal #1 Phase : ZB-MR1 Signal #2 Phase: ZB-MR2
 Signal #1 Info : 30Mx0.32mmx 0.50µ Signal #2 Info : 30M x 0.32mm x 0.25µm

Compound	RT#1	RT#2	Resp#1	Resp#2	ng/ml	ng/ml

System Monitoring Compounds						
1) SA Tetrachlo...	4.673	3.983	73398222	50976357	50.000	50.000
2) SA Decachlor...	10.525	9.112	57760515	58094858	50.000	50.000
Target Compounds						
16) L4 AR-1242-1	5.834	5.084	19132993	14710650	500.000	500.000
17) L4 AR-1242-2	5.855	5.104	29142640	21126749	500.000	500.000
18) L4 AR-1242-3	5.919	5.284	17807278	11743047	500.000	500.000
19) L4 AR-1242-4	6.017	5.367	14505985	12345115	500.000	500.000
20) L4 AR-1242-5	6.751	5.896	15730164	14641014	500.000	500.000

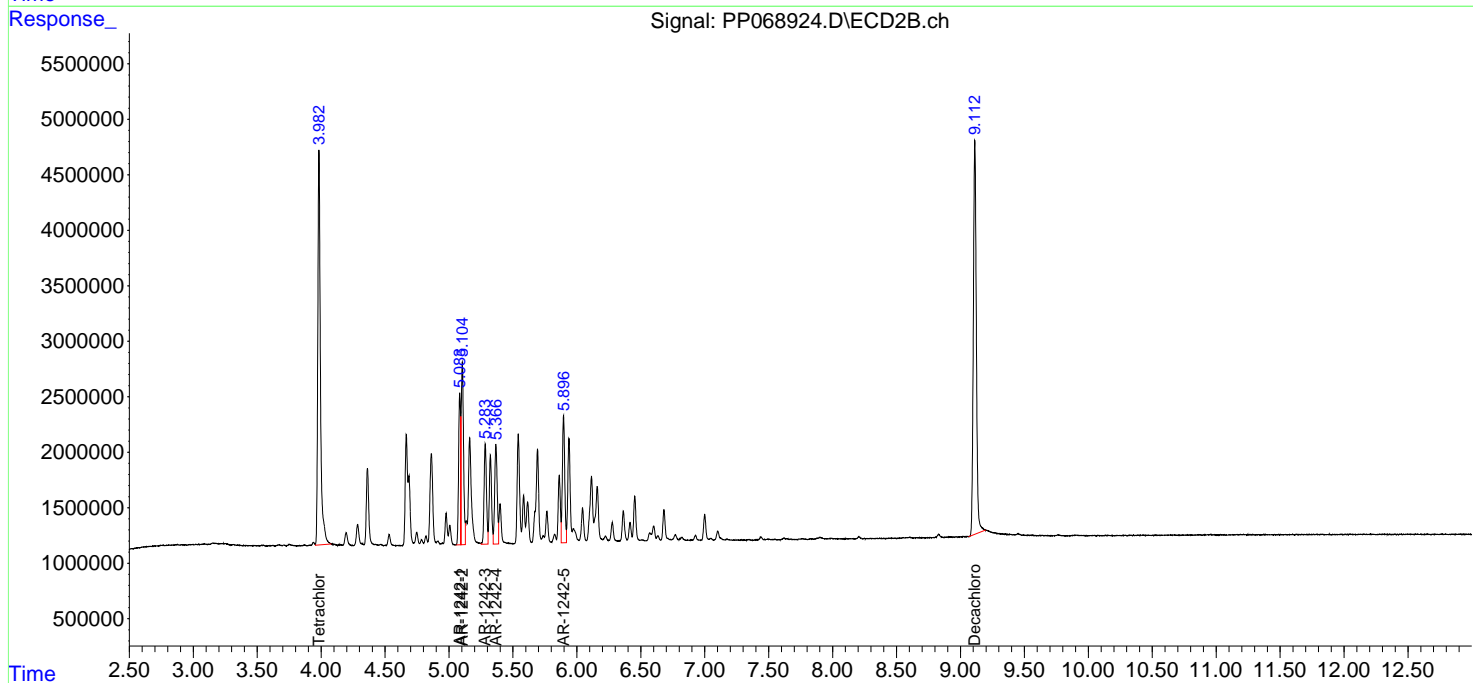
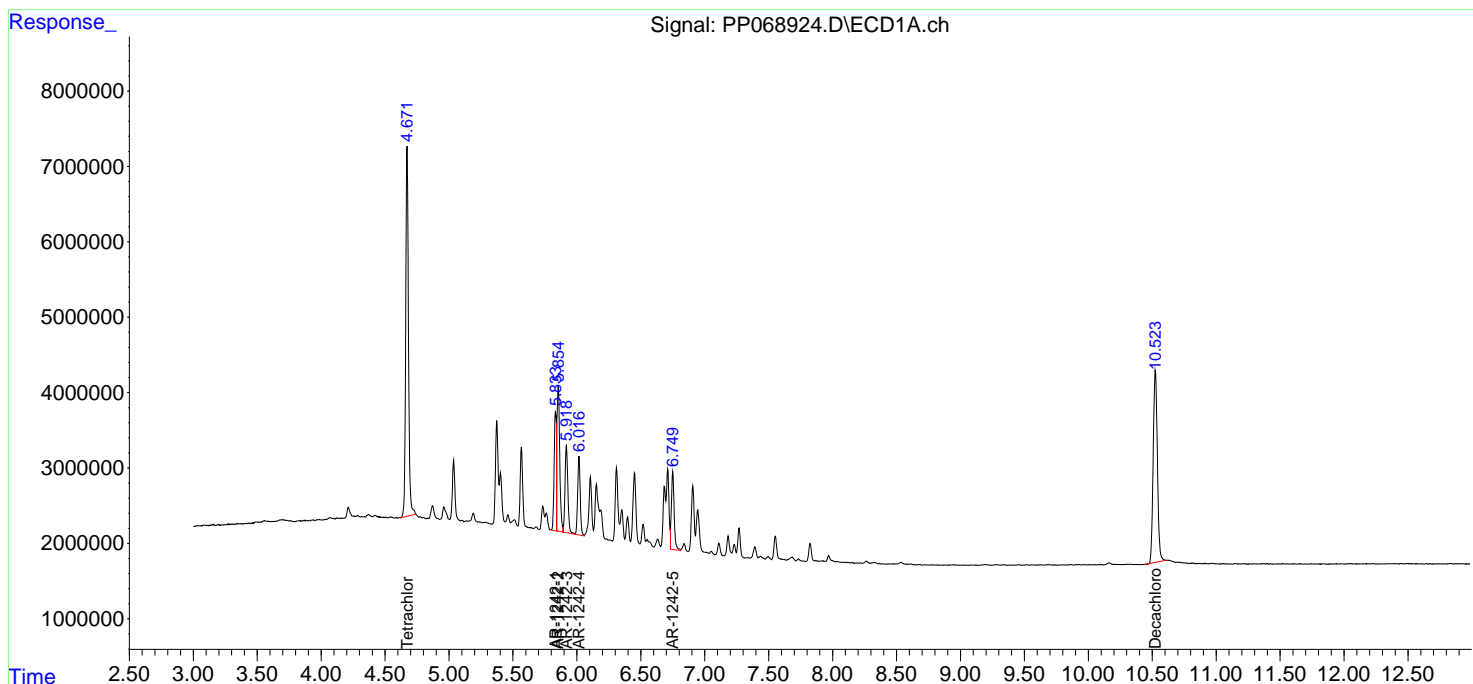
(f)=RT Delta > 1/2 Window (#)=Amounts differ by > 25% (m)=manual int.

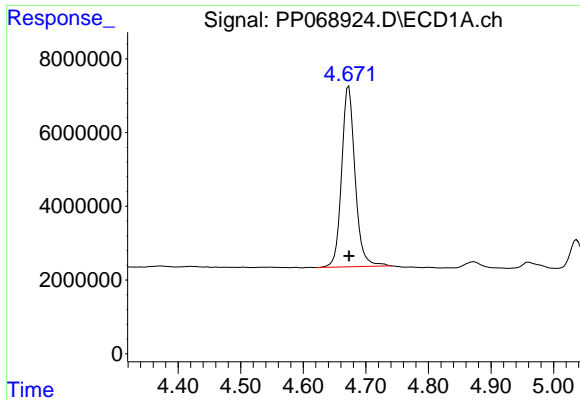
Data Path : Z:\pestpcbsrv\HPCHEM1\ECD_P\Data\PP010625\
 Data File : PP068924.D
 Signal(s) : Signal #1: ECD1A.ch Signal #2: ECD2B.ch
 Acq On : 06 Jan 2025 22:24
 Operator : YP\AJ
 Sample : AR1242ICC500
 Misc :
 ALS Vial : 12 Sample Multiplier: 1

Instrument :
 ECD_P
 ClientSampleId :
 AR1242ICC500

Integration File signal 1: autoint1.e
 Integration File signal 2: autoint2.e
 Quant Time: Jan 07 10:45:03 2025
 Quant Method : Z:\pestpcbsrv\HPCHEM1\ECD_P\methods\PP010625.M
 Quant Title : GC EXTRACTABLES
 QLast Update : Tue Jan 07 10:44:41 2025
 Response via : Initial Calibration
 Integrator: ChemStation

Volume Inj. : 2 µl
 Signal #1 Phase : ZB-MR1 Signal #2 Phase: ZB-MR2
 Signal #1 Info : 30Mx0.32mmx 0.50µ Signal #2 Info : 30M x 0.32mm x 0.25µm

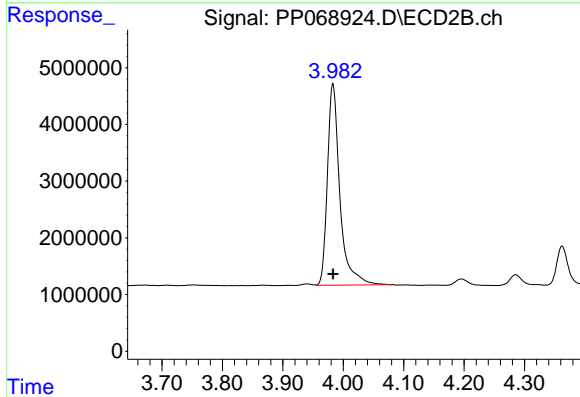




#1 Tetrachloro-m-xylene

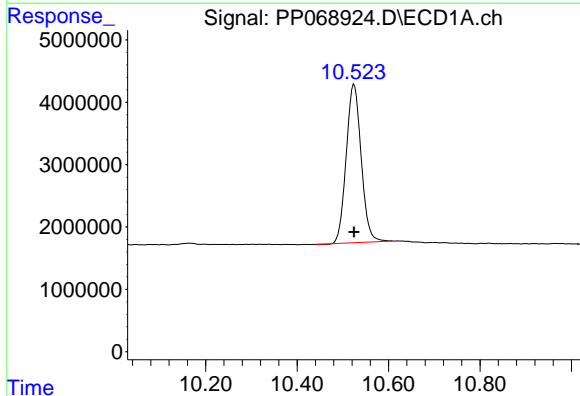
R.T.: 4.673 min
 Delta R.T.: 0.000 min
 Response: 73398222
 Conc: 50.00 ng/ml

Instrument :
 ECD_P
 ClientSampleId :
 AR1242ICC500



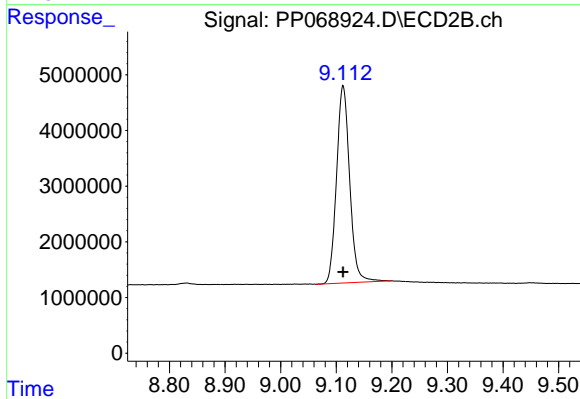
#1 Tetrachloro-m-xylene

R.T.: 3.983 min
 Delta R.T.: 0.000 min
 Response: 50976357
 Conc: 50.00 ng/ml



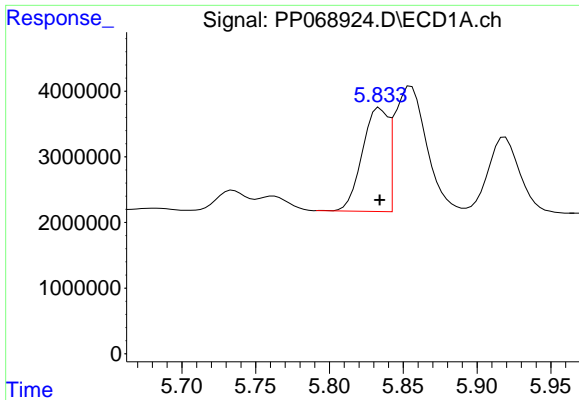
#2 Decachlorobiphenyl

R.T.: 10.525 min
 Delta R.T.: 0.000 min
 Response: 57760515
 Conc: 50.00 ng/ml



#2 Decachlorobiphenyl

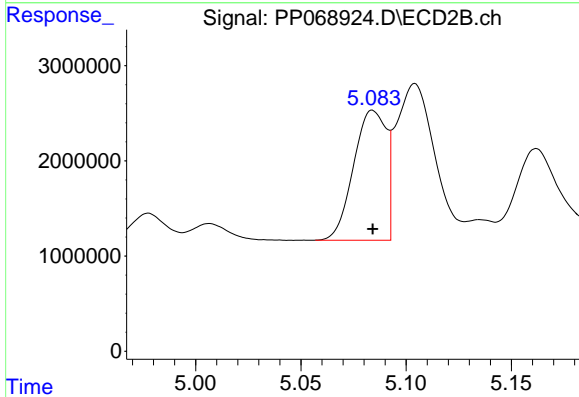
R.T.: 9.112 min
 Delta R.T.: 0.000 min
 Response: 58094858
 Conc: 50.00 ng/ml



#16 AR-1242-1

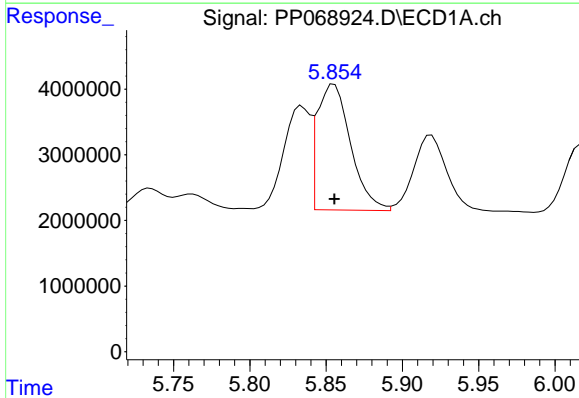
R.T.: 5.834 min
 Delta R.T.: 0.000 min
 Response: 19132993
 Conc: 500.00 ng/ml

Instrument :
 ECD_P
 ClientSampleId :
 AR1242ICC500



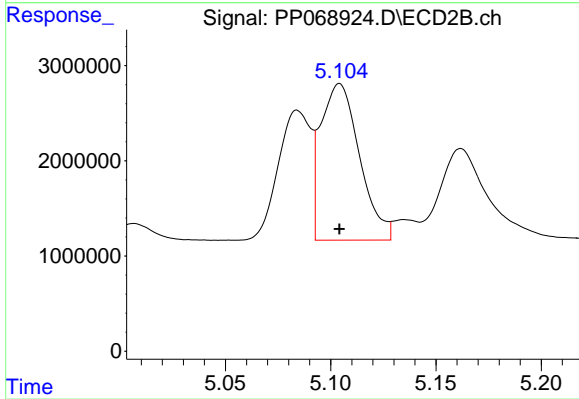
#16 AR-1242-1

R.T.: 5.084 min
 Delta R.T.: 0.000 min
 Response: 14710650
 Conc: 500.00 ng/ml



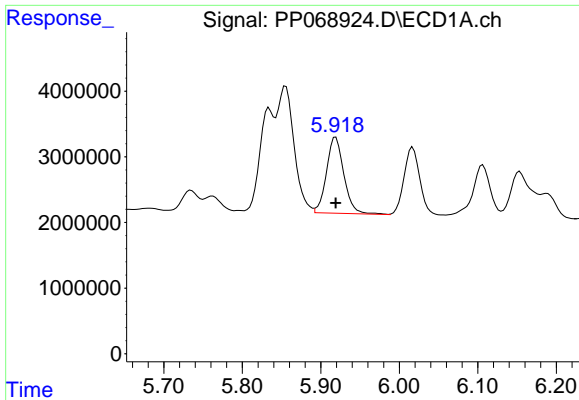
#17 AR-1242-2

R.T.: 5.855 min
 Delta R.T.: 0.000 min
 Response: 29142640
 Conc: 500.00 ng/ml



#17 AR-1242-2

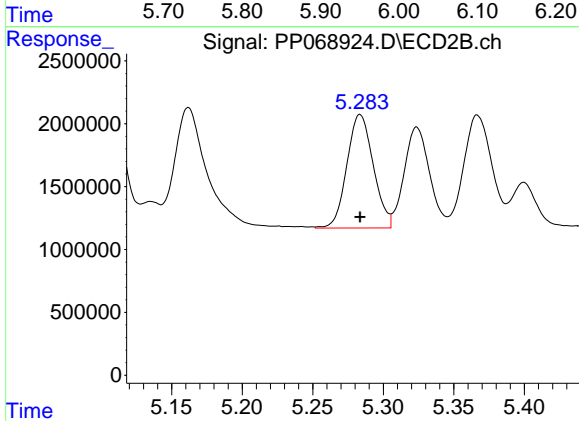
R.T.: 5.104 min
 Delta R.T.: 0.000 min
 Response: 21126749
 Conc: 500.00 ng/ml



#18 AR-1242-3

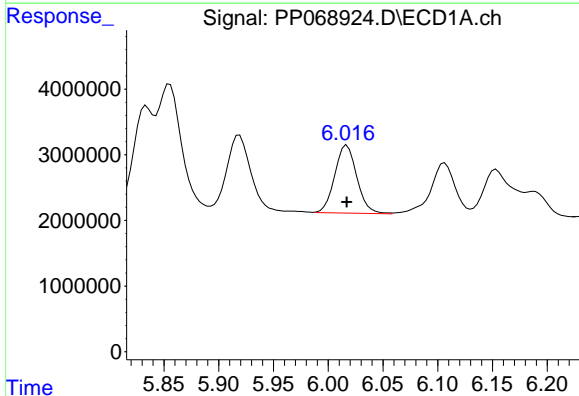
R.T.: 5.919 min
 Delta R.T.: 0.000 min
 Response: 17807278
 Conc: 500.00 ng/ml

Instrument :
 ECD_P
 ClientSampleId :
 AR1242ICC500



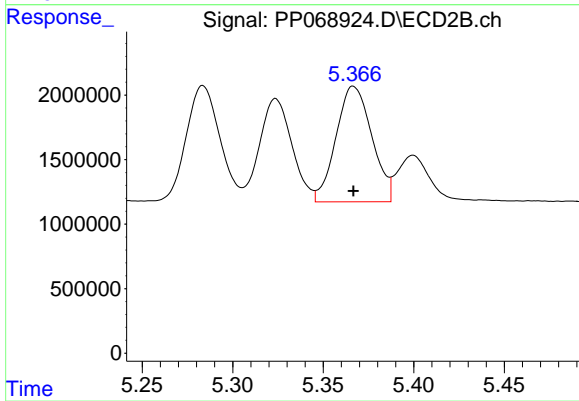
#18 AR-1242-3

R.T.: 5.284 min
 Delta R.T.: 0.000 min
 Response: 11743047
 Conc: 500.00 ng/ml



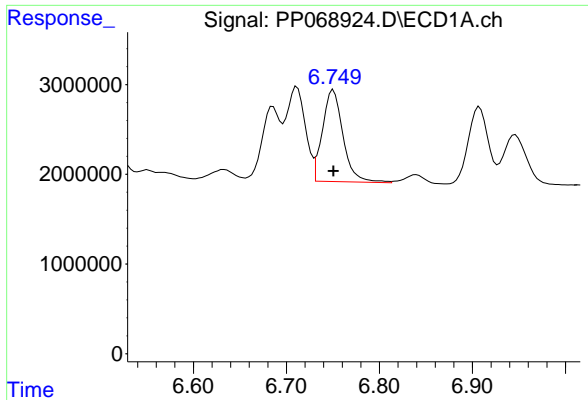
#19 AR-1242-4

R.T.: 6.017 min
 Delta R.T.: 0.000 min
 Response: 14505985
 Conc: 500.00 ng/ml



#19 AR-1242-4

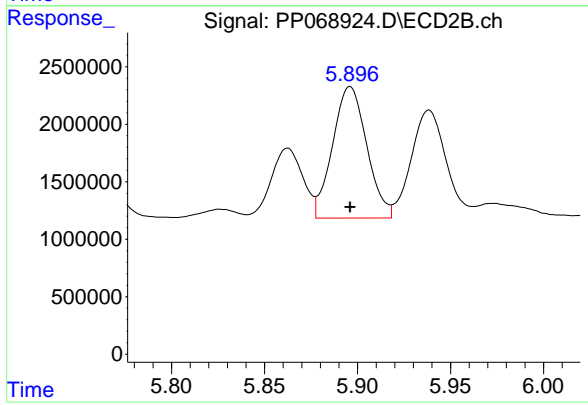
R.T.: 5.367 min
 Delta R.T.: 0.000 min
 Response: 12345115
 Conc: 500.00 ng/ml



#20 AR-1242-5

R.T.: 6.751 min
Delta R.T.: 0.000 min
Response: 15730164
Conc: 500.00 ng/ml

Instrument :
ECD_P
ClientSampleId :
AR1242ICC500



#20 AR-1242-5

R.T.: 5.896 min
Delta R.T.: 0.000 min
Response: 14641014
Conc: 500.00 ng/ml