

Data Path : Z:\pestpcbsrv\HPCHEM1\ECD_P\Data\PP010719\
 Data File : PP028688.D
 Signal(s) : Signal #1: ECD1A.CH Signal #2: ECD2B.CH
 Acq On : 07 Jan 2019 20:24
 Operator : EI\MA
 Sample : K1012-02
 Misc : hexane
 ALS Vial : 17 Sample Multiplier: 1

Instrument :
 ECD_P
 ClientSampleId :

Integration File signal 1: autoint1.e
 Integration File signal 2: autoint2.e
 Quant Time: Jan 08 02:24:27 2019
 Quant Method : Z:\pestpcbsrv\HPCHEM1\ECD_P\methods\PP010319.M
 Quant Title : 8080.M
 QLast Update : Fri Jan 04 01:40:06 2019
 Response via : Initial Calibration
 Integrator: ChemStation 6890 Scale Mode: Large solvent peaks clipped

Volume Inj. : 2 µl
 Signal #1 Phase : ZB-CLPesticides-1 Signal #2 Phase: ZB-CLPesticides-2
 Signal #1 Info : 30M x 0.32mm x0.5 Signal #2 Info : 30M x 0.32mm x 0.25µm

Compound	RT#1	RT#2	Resp#1	Resp#2	ng/ml	ng/ml

System Monitoring Compounds						
4) S 2,4-DCAA	12.137	12.248	93838580	140.8E6	364.981	322.490
Target Compounds						
1) T Dalapon	3.324	2.994	57820047	41467488	94.552	70.935
6) T MCPP	12.833	0.000	9207229	0	21.210	N.D. #
7) T MCPA	13.078	0.000	97828279	0	122.483	N.D. #
8) T DICHLORPROP	0.000	13.694	0	8011583	N.D.	18.449 #
11) T 2,4,5-TP ...	0.000	15.350	0	15633147	N.D.	6.329 #

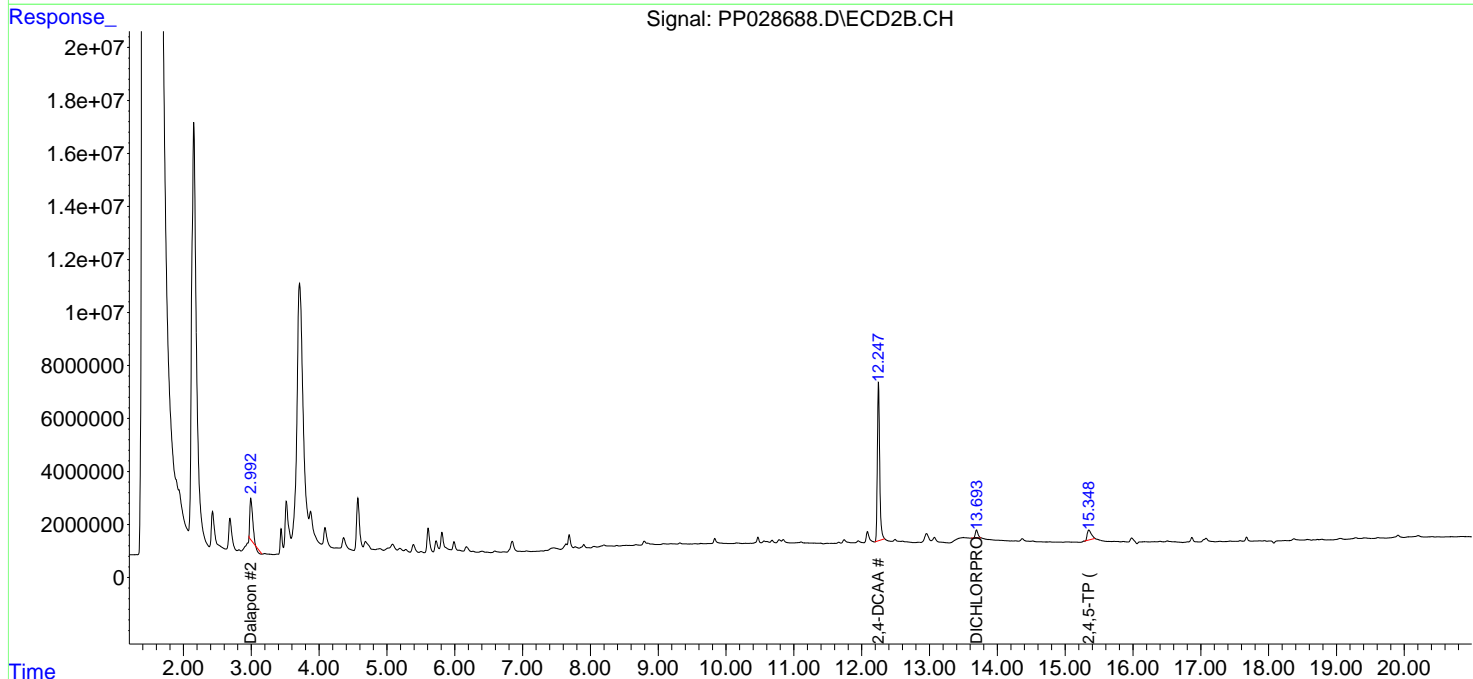
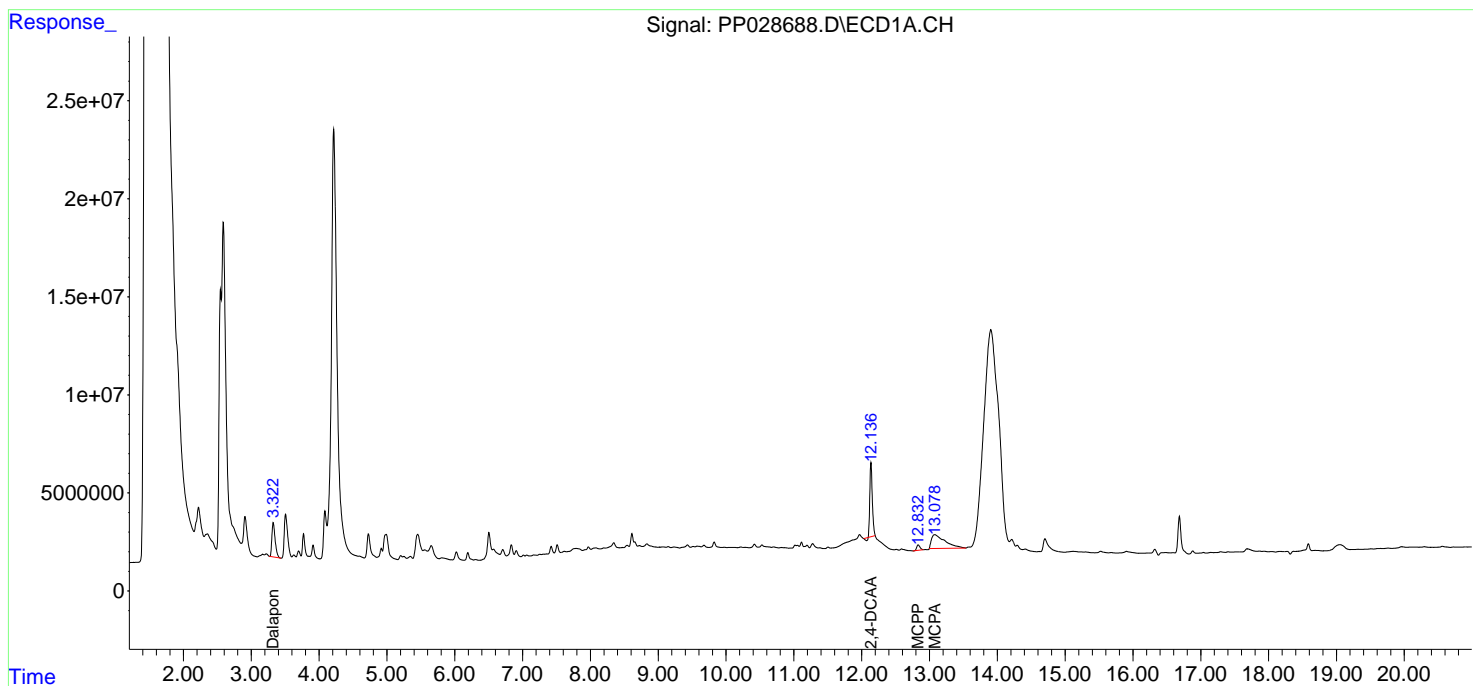
(f)=RT Delta > 1/2 Window (#)=Amounts differ by > 25% (m)=manual int.

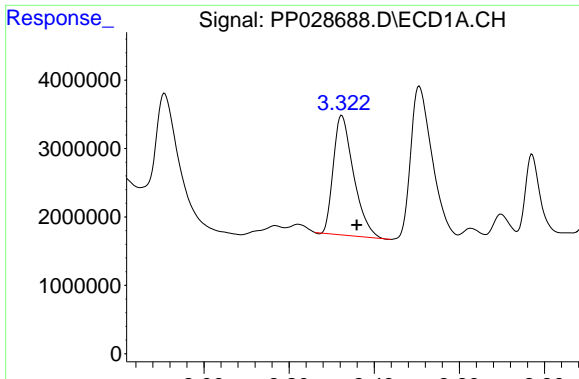
Data Path : Z:\pestpcbsrv\HPCHEM1\ECD_P\Data\PP010719\
 Data File : PP028688.D
 Signal(s) : Signal #1: ECD1A.CH Signal #2: ECD2B.CH
 Acq On : 07 Jan 2019 20:24
 Operator : EI\MA
 Sample : K1012-02
 Misc : hexane
 ALS Vial : 17 Sample Multiplier: 1

Instrument :
 ECD_P
 ClientSampled :

Integration File signal 1: autoint1.e
 Integration File signal 2: autoint2.e
 Quant Time: Jan 08 02:24:27 2019
 Quant Method : Z:\pestpcbsrv\HPCHEM1\ECD_P\methods\PP010319.M
 Quant Title : 8080.M
 QLast Update : Fri Jan 04 01:40:06 2019
 Response via : Initial Calibration
 Integrator: ChemStation 6890 Scale Mode: Large solvent peaks clipped

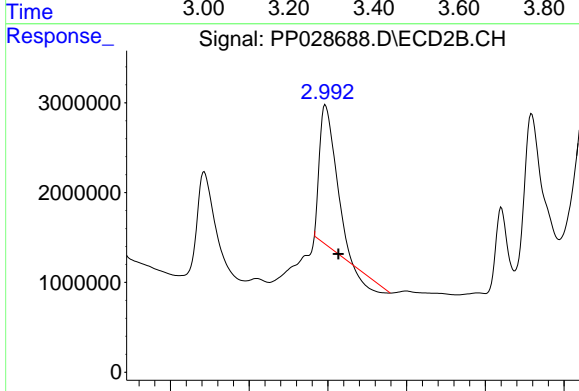
Volume Inj. : 2 µl
 Signal #1 Phase : ZB-CLPesticides-1 Signal #2 Phase: ZB-CLPesticides-2
 Signal #1 Info : 30M x 0.32mm x0.5 Signal #2 Info : 30M x 0.32mm x 0.25µm



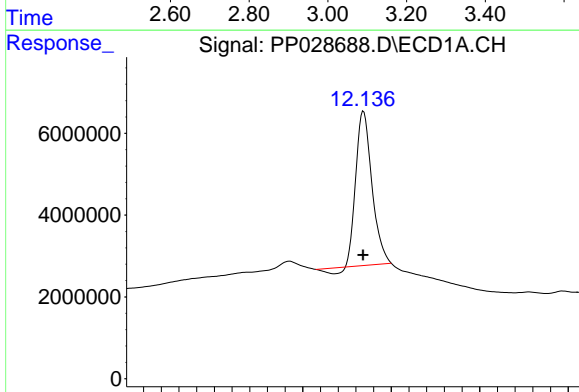


#1 Dalapon
 R.T.: 3.324 min
 Delta R.T.: -0.035 min
 Response: 57820047
 Conc: 94.55 ng/ml

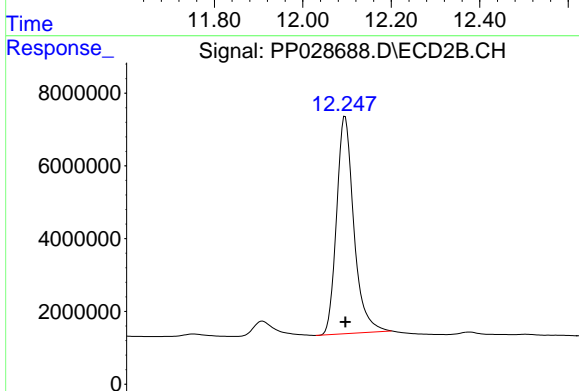
Instrument :
 ECD_P
 ClientSampled :



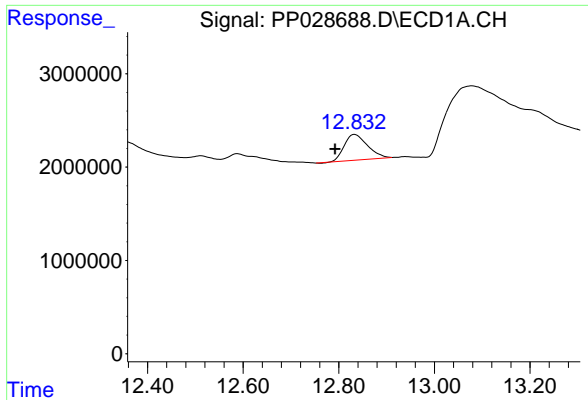
#1 Dalapon
 R.T.: 2.994 min
 Delta R.T.: -0.033 min
 Response: 41467488
 Conc: 70.93 ng/ml



#4 2,4-DCAA
 R.T.: 12.137 min
 Delta R.T.: 0.001 min
 Response: 93838580
 Conc: 364.98 ng/ml

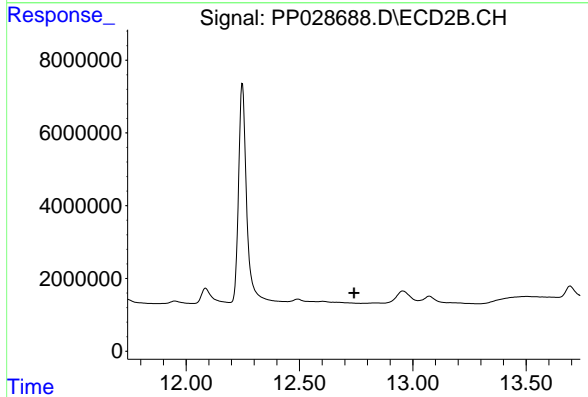


#4 2,4-DCAA
 R.T.: 12.248 min
 Delta R.T.: 0.000 min
 Response: 140792921
 Conc: 322.49 ng/ml

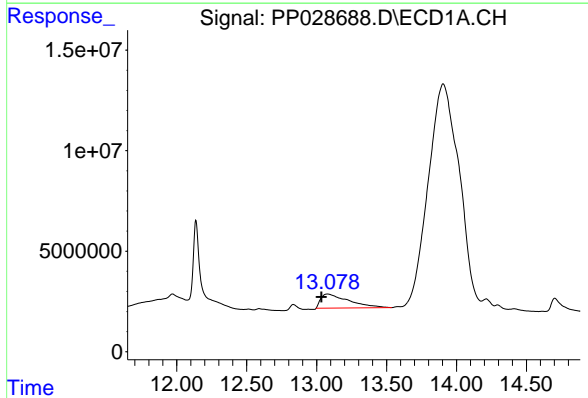


#6 MCPP
 R.T.: 12.833 min
 Delta R.T.: 0.041 min
 Response: 9207229
 Conc: 21.21 ug/ml

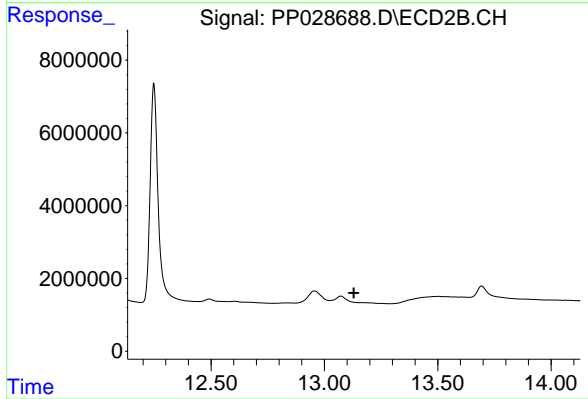
Instrument :
 ECD_P
 ClientSampleId :



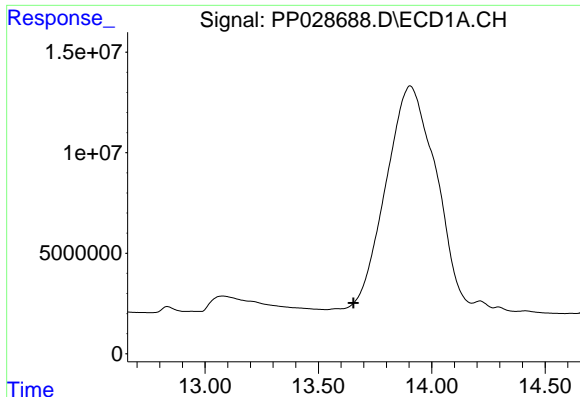
#6 MCPP
 R.T.: 0.000 min
 Exp R.T. : 12.741 min
 Response: 0
 Conc: N.D.



#7 MCPA
 R.T.: 13.078 min
 Delta R.T.: 0.043 min
 Response: 97828279
 Conc: 122.48 ug/ml



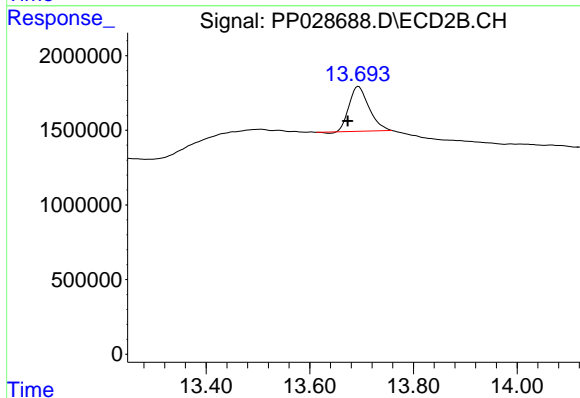
#7 MCPA
 R.T.: 0.000 min
 Exp R.T. : 13.129 min
 Response: 0
 Conc: N.D.



#8 DICHLORPROP

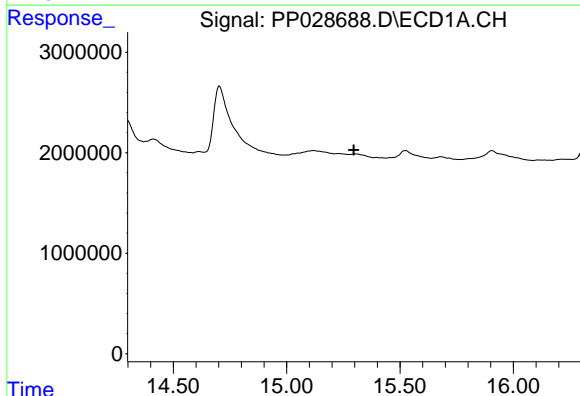
R.T.: 0.000 min
 Exp R.T. : 13.655 min
 Response: 0
 Conc: N.D.

Instrument :
 ECD_P
 ClientSampleId :



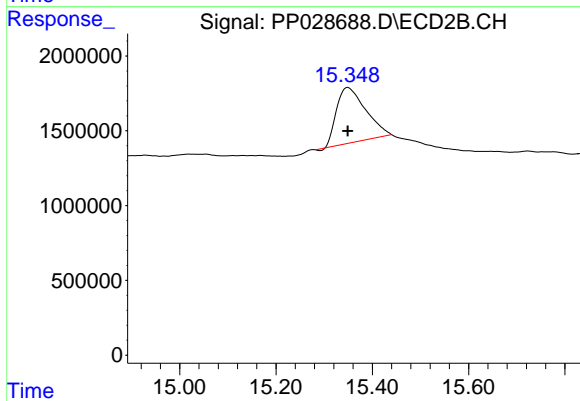
#8 DICHLORPROP

R.T.: 13.694 min
 Delta R.T.: 0.021 min
 Response: 8011583
 Conc: 18.45 ng/ml



#11 2,4,5-TP (SILVEX)

R.T.: 0.000 min
 Exp R.T. : 15.296 min
 Response: 0
 Conc: N.D.



#11 2,4,5-TP (SILVEX)

R.T.: 15.350 min
 Delta R.T.: 0.001 min
 Response: 15633147
 Conc: 6.33 ng/ml