

Data Path : Z:\pestpcbsrv\HPCHEM1\ECD_P\Data\PP010719\
 Data File : PP028693.D
 Signal(s) : Signal #1: ECD1A.CH Signal #2: ECD2B.CH
 Acq On : 07 Jan 2019 22:31
 Operator : EI\MA
 Sample : I.BLK
 Misc : hexane
 ALS Vial : 2 Sample Multiplier: 1

Instrument :
 ECD_P
 ClientSampleId :

Integration File signal 1: autoint1.e
 Integration File signal 2: autoint2.e
 Quant Time: Jan 08 02:25:28 2019
 Quant Method : Z:\pestpcbsrv\HPCHEM1\ECD_P\methods\PP010319.M
 Quant Title : 8080.M
 QLast Update : Fri Jan 04 01:40:06 2019
 Response via : Initial Calibration
 Integrator: ChemStation 6890 Scale Mode: Large solvent peaks clipped

Volume Inj. : 2 µl
 Signal #1 Phase : ZB-CLPesticides-1 Signal #2 Phase: ZB-CLPesticides-2
 Signal #1 Info : 30M x 0.32mm x0.5 Signal #2 Info : 30M x 0.32mm x 0.25µm

Compound	RT#1	RT#2	Resp#1	Resp#2	ng/ml	ng/ml

System Monitoring Compounds						
4) S 2,4-DCAA	12.139	12.251	89406260	163.5E6	347.742	374.519

Target Compounds

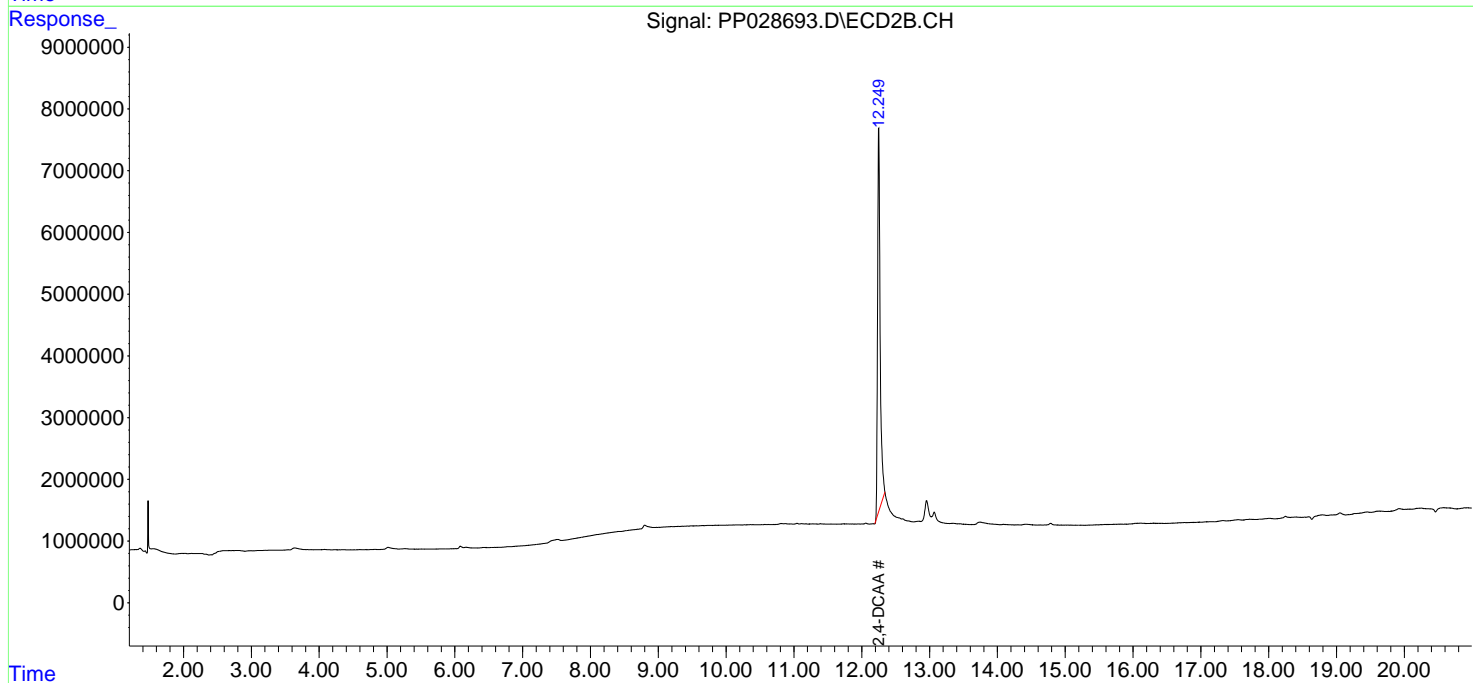
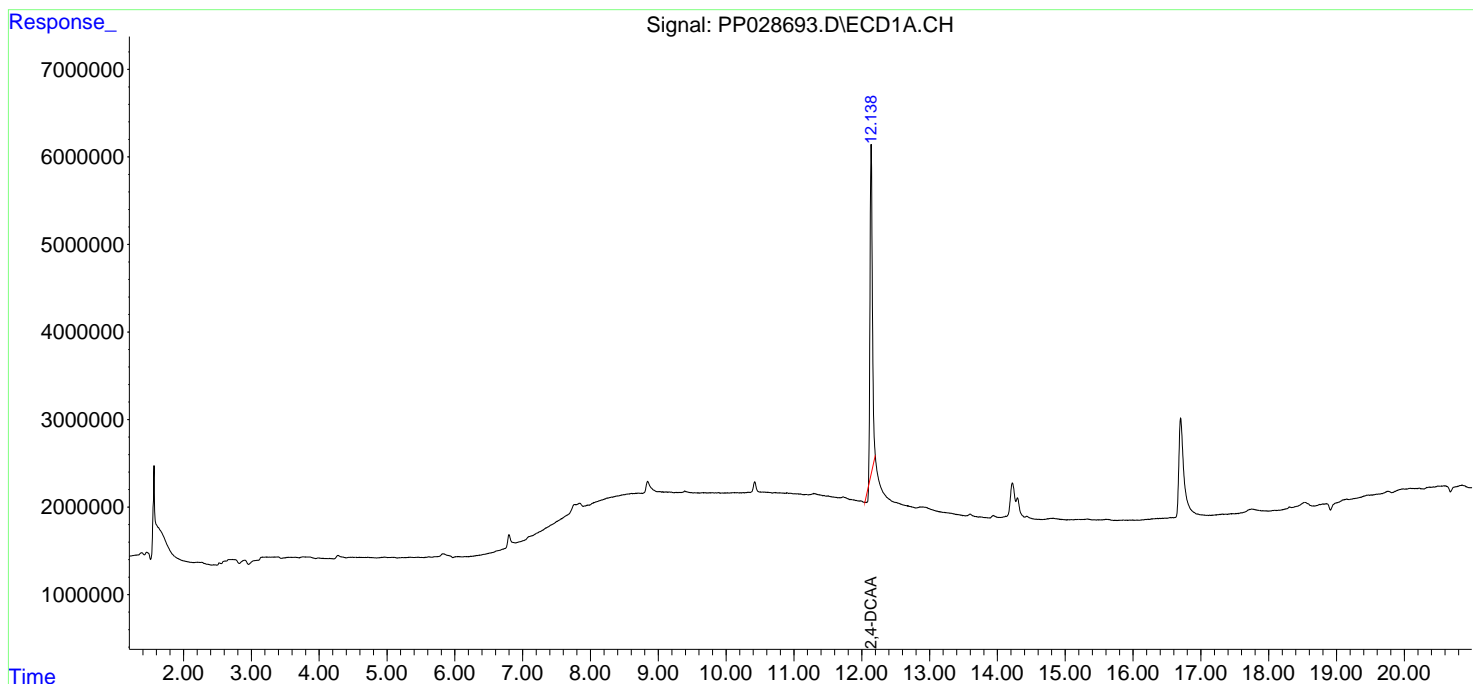
(f)=RT Delta > 1/2 Window (#)=Amounts differ by > 25% (m)=manual int.

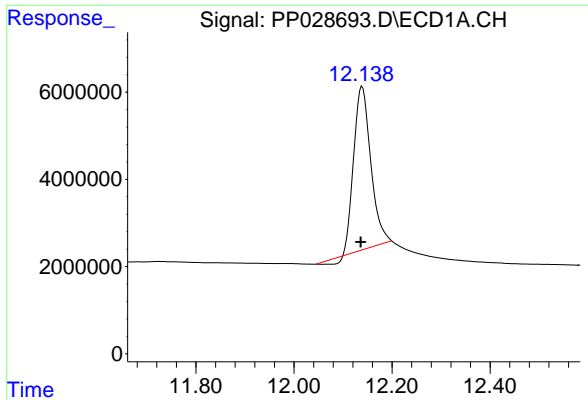
Data Path : Z:\pestpcbsrv\HPCHEM1\ECD_P\Data\PP010719\
 Data File : PP028693.D
 Signal(s) : Signal #1: ECD1A.CH Signal #2: ECD2B.CH
 Acq On : 07 Jan 2019 22:31
 Operator : EI\MA
 Sample : I.BLK
 Misc : hexane
 ALS Vial : 2 Sample Multiplier: 1

Instrument :
 ECD_P
 ClientSampled :

Integration File signal 1: autoint1.e
 Integration File signal 2: autoint2.e
 Quant Time: Jan 08 02:25:28 2019
 Quant Method : Z:\pestpcbsrv\HPCHEM1\ECD_P\methods\PP010319.M
 Quant Title : 8080.M
 QLast Update : Fri Jan 04 01:40:06 2019
 Response via : Initial Calibration
 Integrator: ChemStation 6890 Scale Mode: Large solvent peaks clipped

Volume Inj. : 2 µl
 Signal #1 Phase : ZB-CLPesticides-1 Signal #2 Phase: ZB-CLPesticides-2
 Signal #1 Info : 30M x 0.32mm x0.5 Signal #2 Info : 30M x 0.32mm x 0.25µm

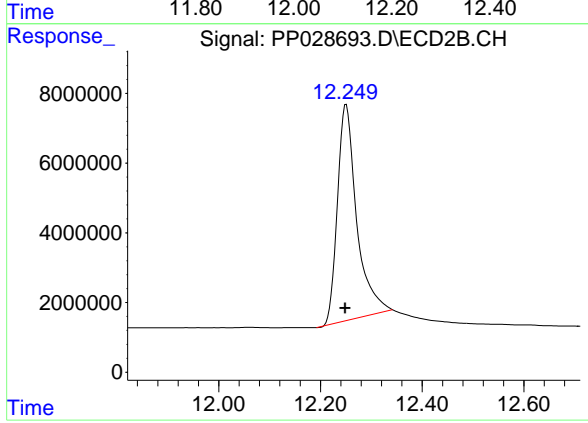




#4 2,4-DCAA

R.T.: 12.139 min
Delta R.T.: 0.003 min
Response: 89406260
Conc: 347.74 ng/ml

Instrument :
ECD_P
ClientSampleId :



#4 2,4-DCAA

R.T.: 12.251 min
Delta R.T.: 0.002 min
Response: 163507803
Conc: 374.52 ng/ml