

Data Path : Z:\pestpcbsrv\HPCHEM1\ECD_P\Data\PP010722\
 Data File : PP042773.D
 Signal(s) : Signal #1: ECD1A.CH Signal #2: ECD2B.CH
 Acq On : 08 Jan 2022 12:08
 Operator : AJ\MA
 Sample : I.BLK
 Misc :
 ALS Vial : 2 Sample Multiplier: 1

Instrument :
 ECD_P
ClientSampleId :
 I.BLK

Manual Integrations
APPROVED

Reviewed By :Ankita Jodhani 01/10/2022
 Supervised By :mohammad ahmed 01/10/2022

Integration File signal 1: autoint1.e
 Integration File signal 2: autoint2.e
 Quant Time: Jan 09 19:43:36 2022
 Quant Method : Z:\pestpcbsrv\HPCHEM1\ECD_P\methods\PP010422.M
 Quant Title : GC EXTRACTABLES
 QLast Update : Wed Jan 05 12:01:35 2022
 Response via : Initial Calibration
 Integrator: ChemStation 6890 Scale Mode: Small noise peaks clipped

Volume Inj. : 2 µl
 Signal #1 Phase : ZB-MR1 Signal #2 Phase: ZB-MR2
 Signal #1 Info : 30Mx0.32mmx 0.50µ Signal #2 Info : 30M x 0.32mm x 0.25µm

Compound	RT#1	RT#2	Resp#1	Resp#2	ng/ml	ng/ml

System Monitoring Compounds						
1) SA Tetrachlo...	4.880	4.049	406617	449291	20.988	17.163
2) SA Decachlor...	10.808	9.380	299330	414394	25.515	21.086m

Target Compounds

(f)=RT Delta > 1/2 Window (#)=Amounts differ by > 25% (m)=manual int.

Data Path : Z:\pestpcbsrv\HPCHEM1\ECD_P\Data\PP010722\
 Data File : PP042773.D
 Signal(s) : Signal #1: ECD1A.CH Signal #2: ECD2B.CH
 Acq On : 08 Jan 2022 12:08
 Operator : AJ\MA
 Sample : I.BLK
 Misc :
 ALS Vial : 2 Sample Multiplier: 1

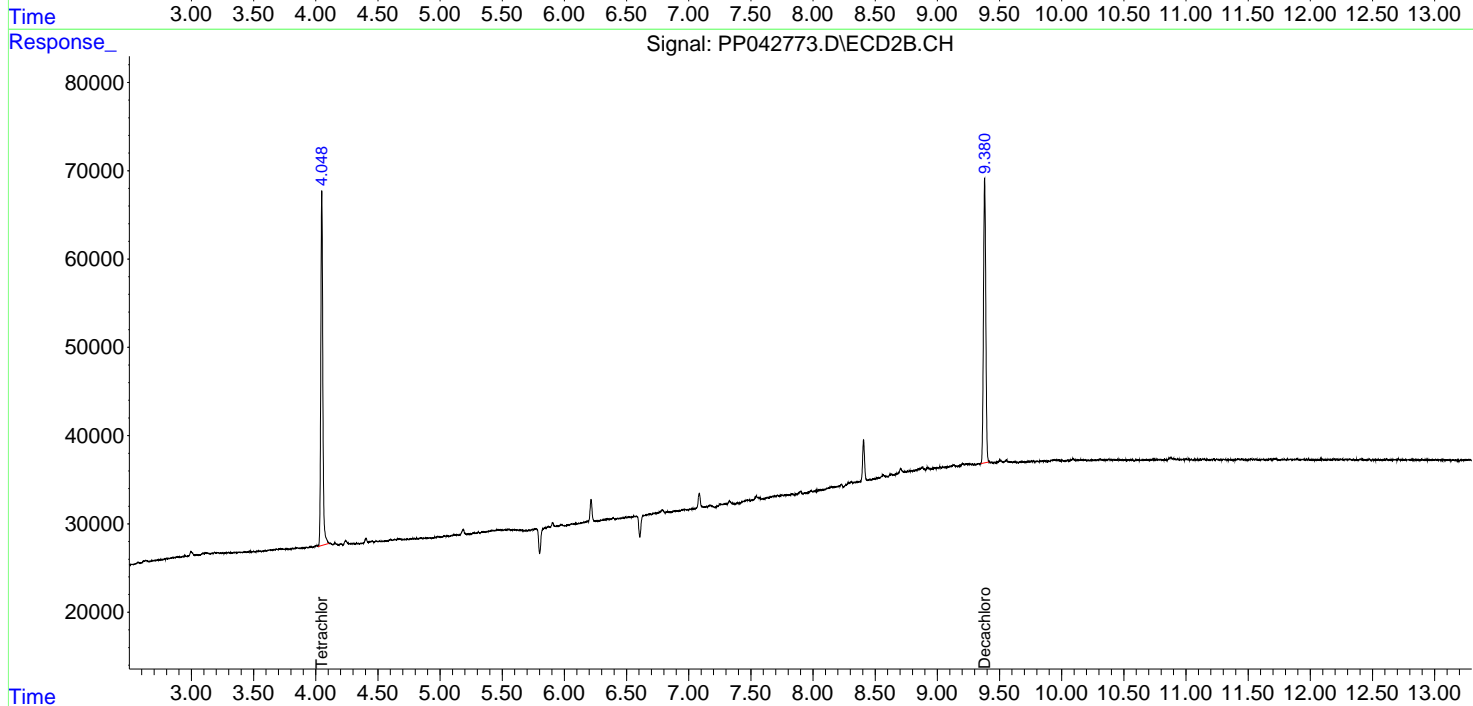
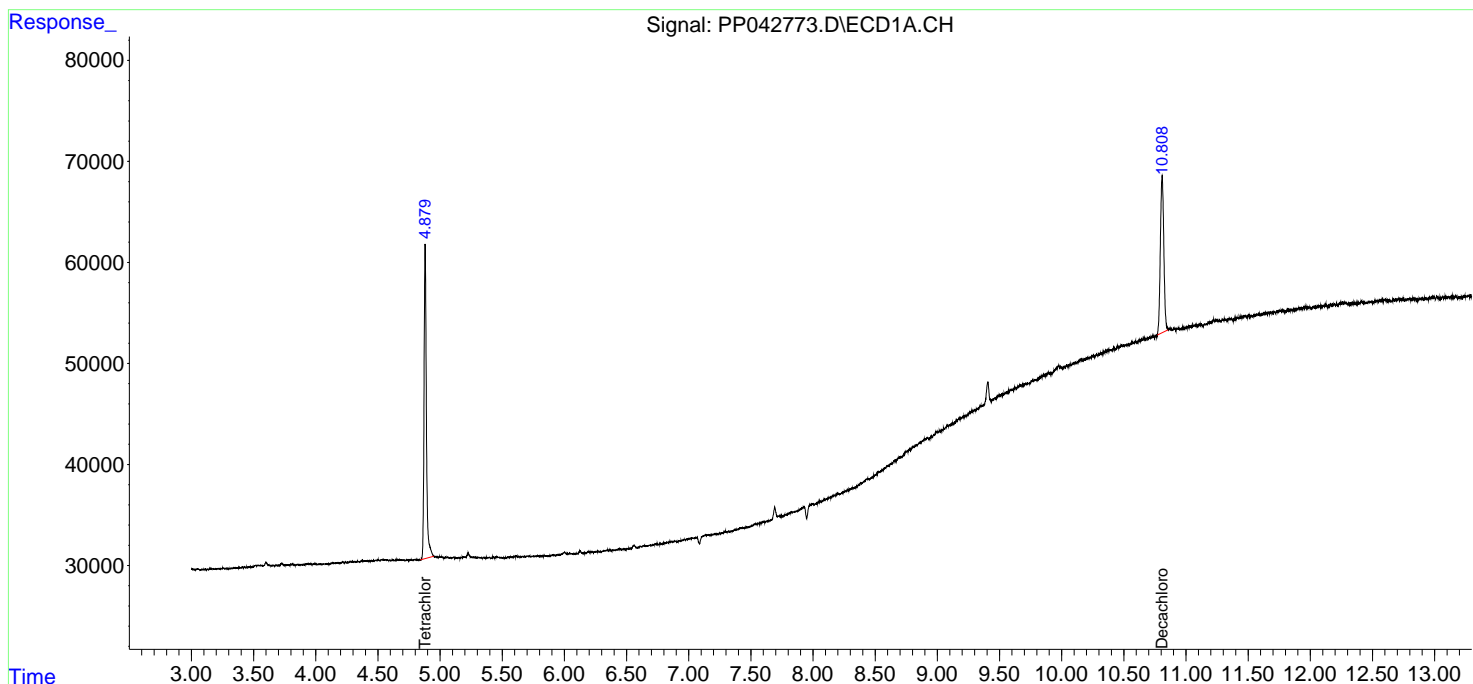
Instrument :
 ECD_P
ClientSampleId :
 I.BLK

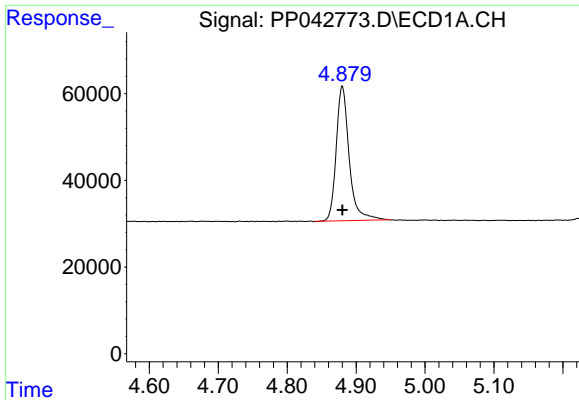
Manual Integrations
APPROVED

Reviewed By :Ankita Jodhani 01/10/2022
 Supervised By :mohammad ahmed 01/10/2022

Integration File signal 1: autoint1.e
 Integration File signal 2: autoint2.e
 Quant Time: Jan 09 19:43:36 2022
 Quant Method : Z:\pestpcbsrv\HPCHEM1\ECD_P\methods\PP010422.M
 Quant Title : GC EXTRACTABLES
 QLast Update : Wed Jan 05 12:01:35 2022
 Response via : Initial Calibration
 Integrator: ChemStation 6890 Scale Mode: Small noise peaks clipped

Volume Inj. : 2 µl
 Signal #1 Phase : ZB-MR1 Signal #2 Phase: ZB-MR2
 Signal #1 Info : 30Mx0.32mmx 0.50µ Signal #2 Info : 30M x 0.32mm x 0.25µm





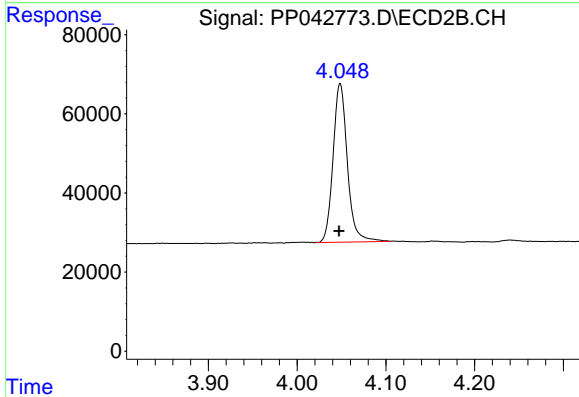
#1 Tetrachloro-m-xylene

R.T.: 4.880 min
 Delta R.T.: 0.000 min
 Response: 406617
 Conc: 20.99 ng/ml

Instrument : ECD_P
 ClientSampleId : I.BLK

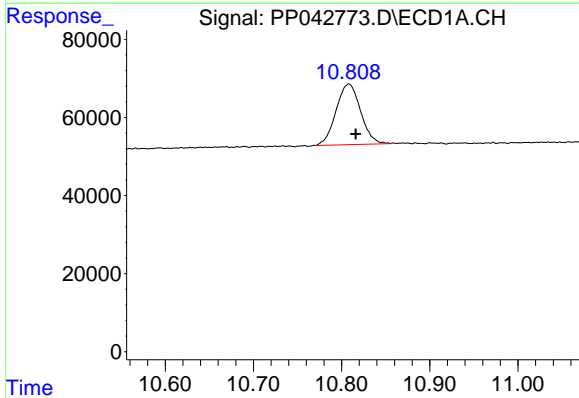
Manual Integrations
 APPROVED

Reviewed By :Ankita Jodhani 01/10/2022
 Supervised By :mohammad ahmed 01/10/2022



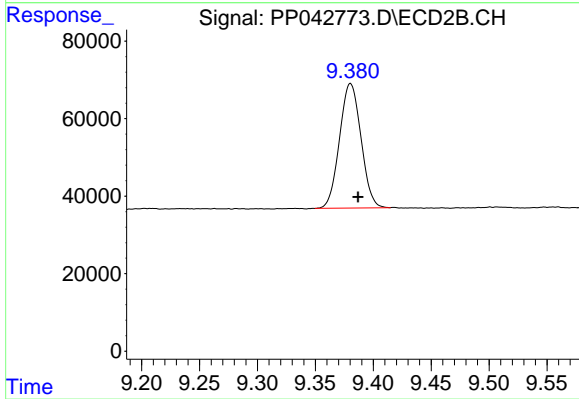
#1 Tetrachloro-m-xylene

R.T.: 4.049 min
 Delta R.T.: 0.001 min
 Response: 449291
 Conc: 17.16 ng/ml



#2 Decachlorobiphenyl

R.T.: 10.808 min
 Delta R.T.: -0.008 min
 Response: 299330
 Conc: 25.51 ng/ml



#2 Decachlorobiphenyl

R.T.: 9.380 min
 Delta R.T.: -0.007 min
 Response: 414394
 Conc: 21.09 ng/ml m