

Data Path : Z:\pestpcbsrv\HPCHEM1\ECD_P\Data\PP010725\
 Data File : PP068966.D
 Signal(s) : Signal #1: ECD1A.ch Signal #2: ECD2B.ch
 Acq On : 07 Jan 2025 15:19
 Operator : YP\AJ
 Sample : AR1248CCC500
 Misc :
 ALS Vial : 5 Sample Multiplier: 1

Instrument :
 ECD_P
ClientSampleId :
 AR1248CCC500

Integration File signal 1: autoint1.e
 Integration File signal 2: autoint2.e
 Quant Time: Jan 07 16:59:47 2025
 Quant Method : Z:\pestpcbsrv\HPCHEM1\ECD_P\methods\PP010625.M
 Quant Title : GC EXTRACTABLES
 QLast Update : Tue Jan 07 11:05:55 2025
 Response via : Initial Calibration
 Integrator: ChemStation

Volume Inj. : 2 µl
 Signal #1 Phase : ZB-MR1 Signal #2 Phase: ZB-MR2
 Signal #1 Info : 30Mx0.32mmx 0.50µ Signal #2 Info : 30M x 0.32mm x 0.25µm

Compound	RT#1	RT#2	Resp#1	Resp#2	ng/ml	ng/ml

System Monitoring Compounds						
1) SA Tetrachlo...	4.671	3.980	71954783	47679616	51.718	48.844
2) SA Decachlor...	10.519	9.106	54340556	53616344	48.672	44.631
Target Compounds						
21) L5 AR-1248-1	5.831	5.081	13707438	11247104	465.801	489.023
22) L5 AR-1248-2	6.104	5.320	19984274	16266066	463.448	476.429
23) L5 AR-1248-3	6.309	5.364	22060273	16772389	467.602	474.697
24) L5 AR-1248-4	6.709	5.538	24731182	19097650	460.537	463.966
25) L5 AR-1248-5	6.748	5.935	24198103	17765598	465.194	459.223

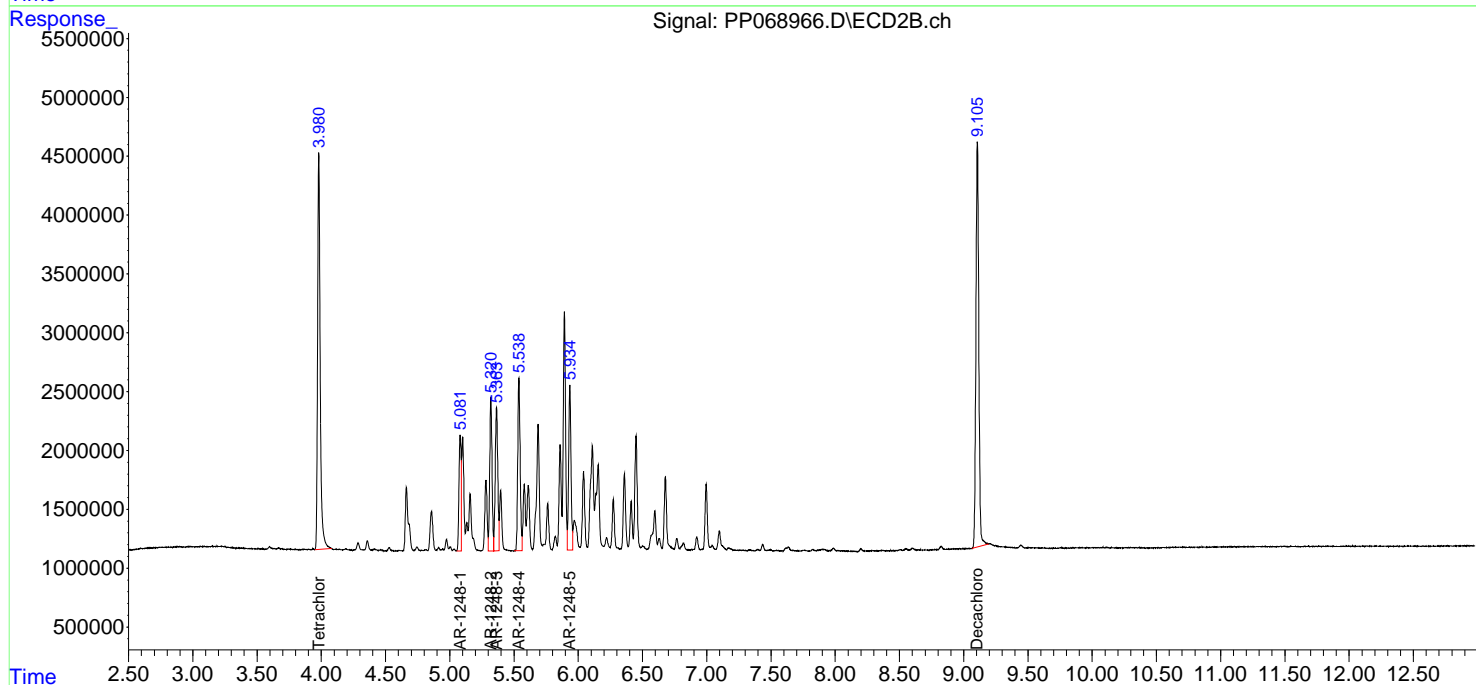
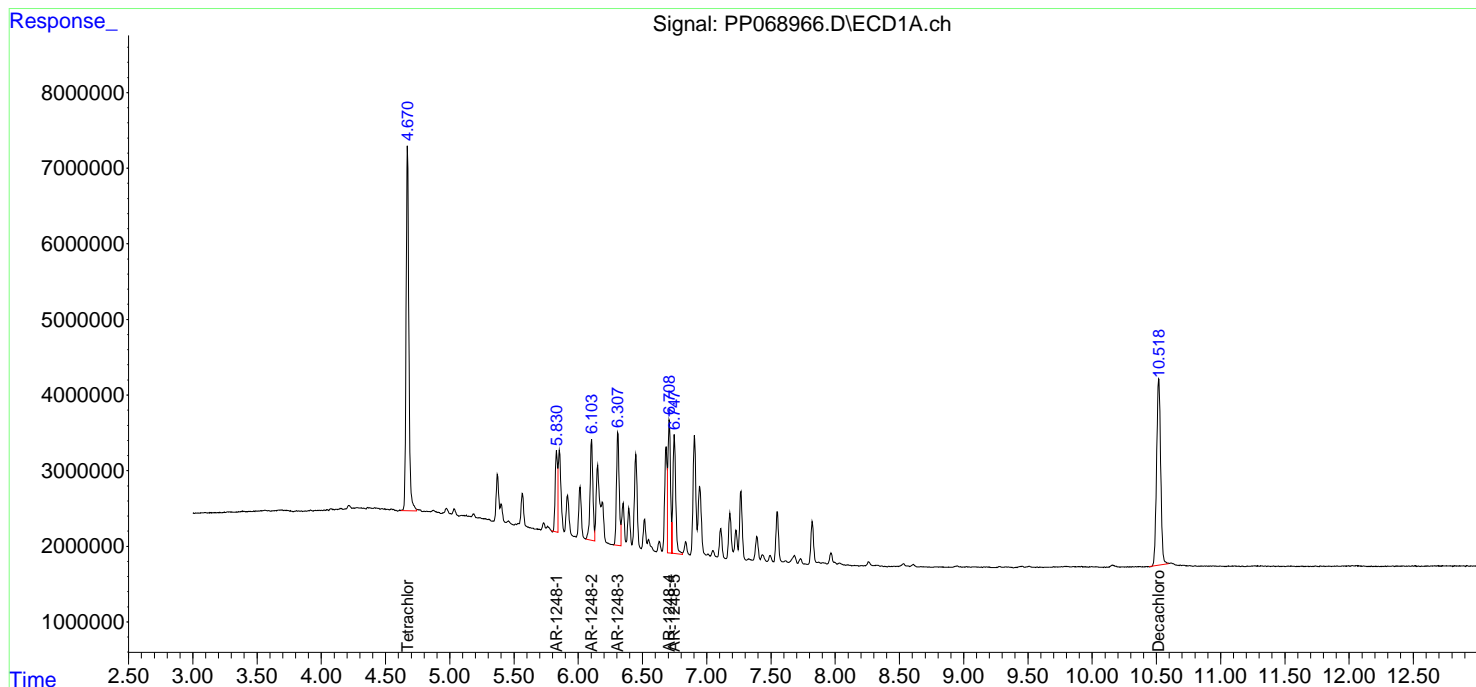
(f)=RT Delta > 1/2 Window (#)=Amounts differ by > 25% (m)=manual int.

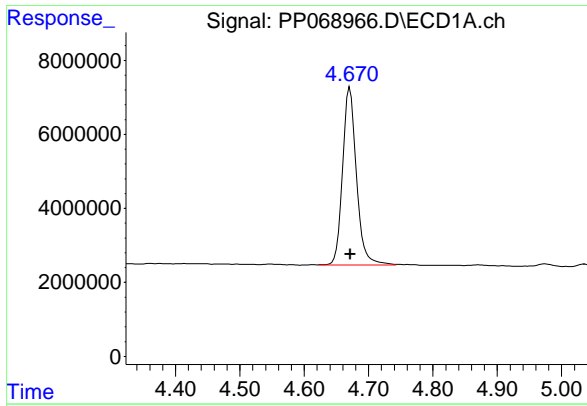
Data Path : Z:\pestpcbsrv\HPCHEM1\ECD_P\Data\PP010725\
 Data File : PP068966.D
 Signal(s) : Signal #1: ECD1A.ch Signal #2: ECD2B.ch
 Acq On : 07 Jan 2025 15:19
 Operator : YP\AJ
 Sample : AR1248CCC500
 Misc :
 ALS Vial : 5 Sample Multiplier: 1

Instrument :
 ECD_P
 ClientSampleId :
 AR1248CCC500

Integration File signal 1: autoint1.e
 Integration File signal 2: autoint2.e
 Quant Time: Jan 07 16:59:47 2025
 Quant Method : Z:\pestpcbsrv\HPCHEM1\ECD_P\methods\PP010625.M
 Quant Title : GC EXTRACTABLES
 QLast Update : Tue Jan 07 11:05:55 2025
 Response via : Initial Calibration
 Integrator: ChemStation

Volume Inj. : 2 µl
 Signal #1 Phase : ZB-MR1 Signal #2 Phase: ZB-MR2
 Signal #1 Info : 30Mx0.32mmx 0.50µm Signal #2 Info : 30M x 0.32mm x 0.25µm

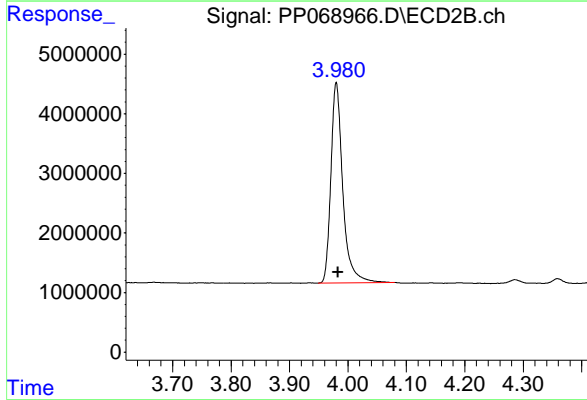




#1 Tetrachloro-m-xylene

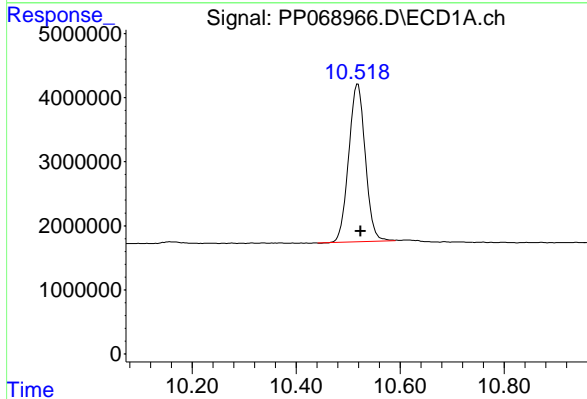
R.T.: 4.671 min
 Delta R.T.: -0.001 min
 Response: 71954783
 Conc: 51.72 ng/ml

Instrument :
 ECD_P
 ClientSampleId :
 AR1248CCC500



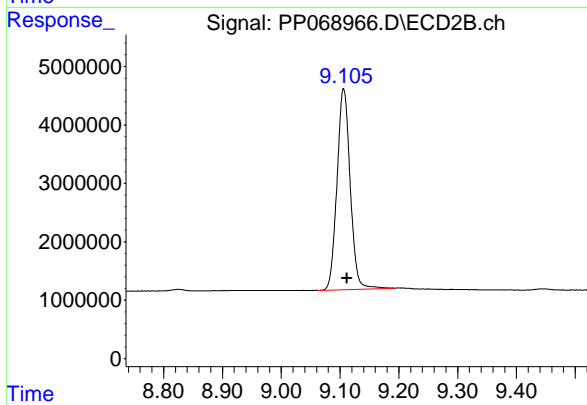
#1 Tetrachloro-m-xylene

R.T.: 3.980 min
 Delta R.T.: -0.003 min
 Response: 47679616
 Conc: 48.84 ng/ml



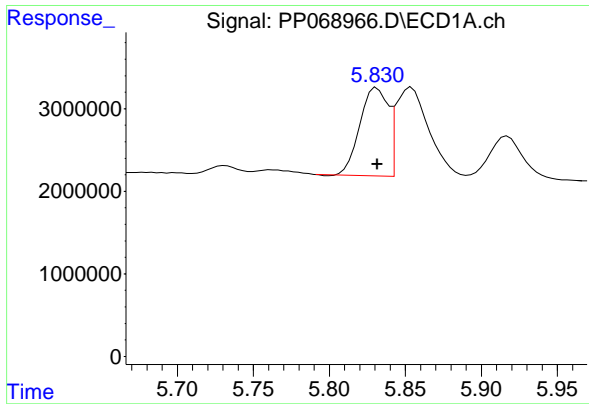
#2 Decachlorobiphenyl

R.T.: 10.519 min
 Delta R.T.: -0.005 min
 Response: 54340556
 Conc: 48.67 ng/ml



#2 Decachlorobiphenyl

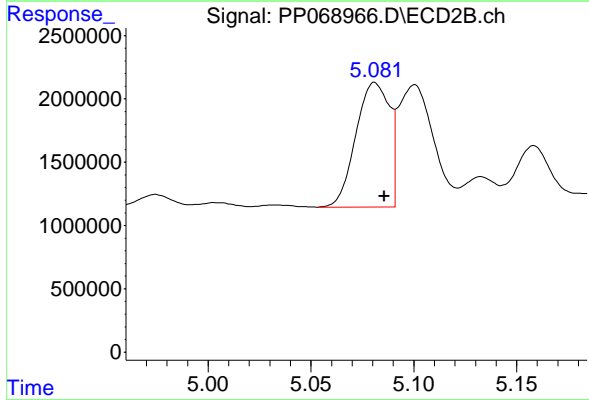
R.T.: 9.106 min
 Delta R.T.: -0.005 min
 Response: 53616344
 Conc: 44.63 ng/ml



#21 AR-1248-1

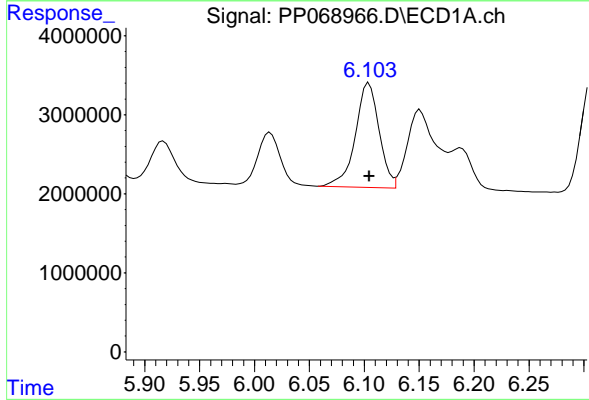
R.T.: 5.831 min
 Delta R.T.: 0.000 min
 Response: 13707438
 Conc: 465.80 ng/ml

Instrument :
 ECD_P
 ClientSampleId :
 AR1248CCC500



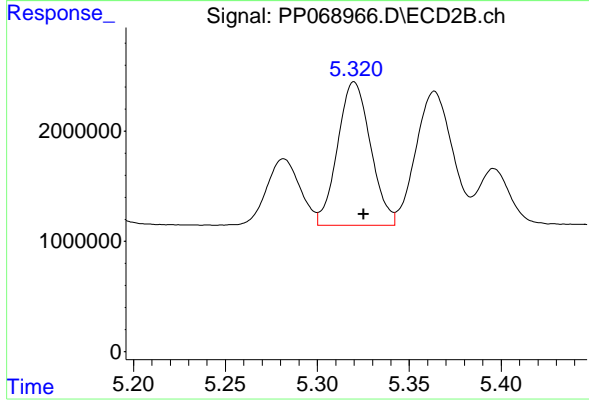
#21 AR-1248-1

R.T.: 5.081 min
 Delta R.T.: -0.005 min
 Response: 11247104
 Conc: 489.02 ng/ml



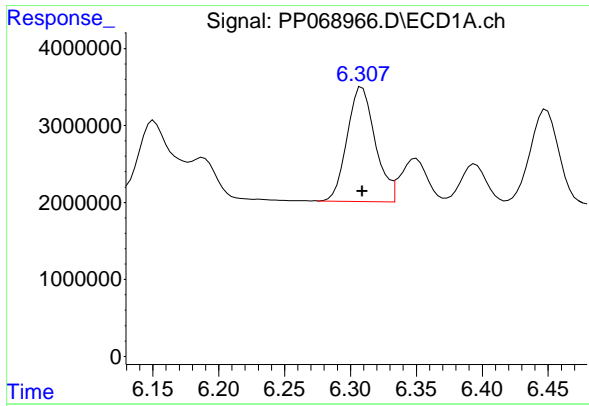
#22 AR-1248-2

R.T.: 6.104 min
 Delta R.T.: 0.000 min
 Response: 19984274
 Conc: 463.45 ng/ml



#22 AR-1248-2

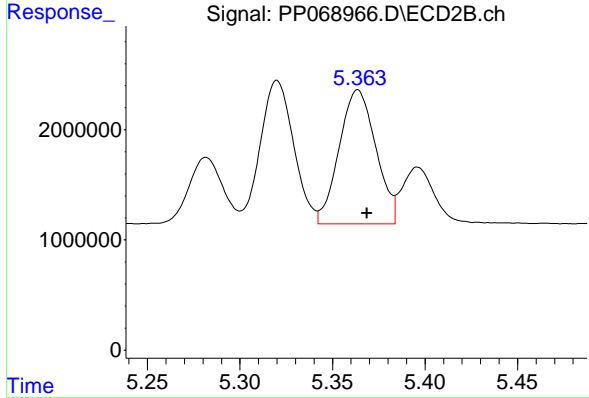
R.T.: 5.320 min
 Delta R.T.: -0.005 min
 Response: 16266066
 Conc: 476.43 ng/ml



#23 AR-1248-3

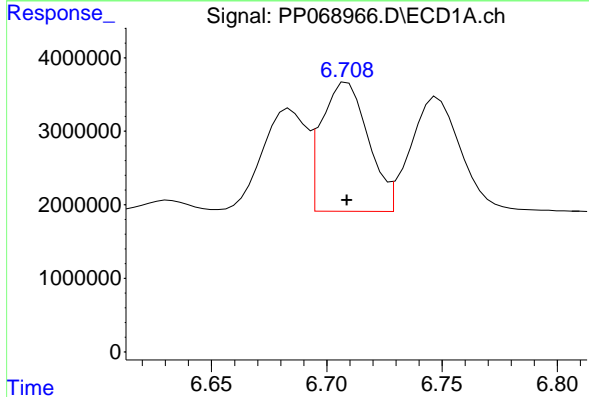
R.T.: 6.309 min
 Delta R.T.: 0.000 min
 Response: 22060273
 Conc: 467.60 ng/ml

Instrument :
 ECD_P
 ClientSampleId :
 AR1248CCC500



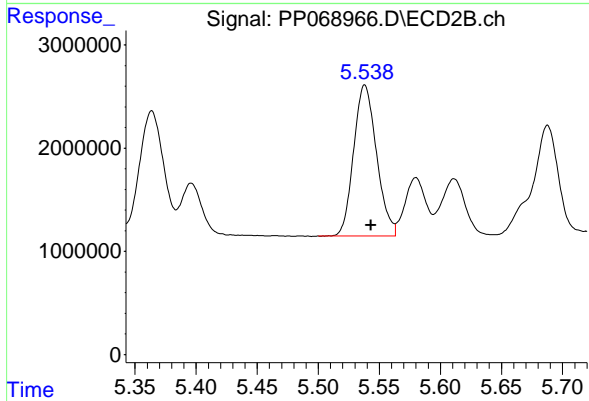
#23 AR-1248-3

R.T.: 5.364 min
 Delta R.T.: -0.005 min
 Response: 16772389
 Conc: 474.70 ng/ml



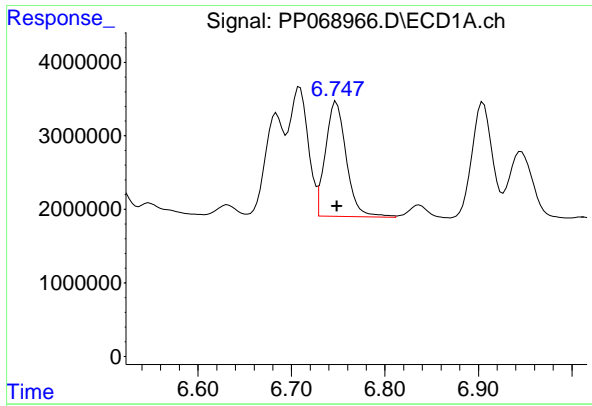
#24 AR-1248-4

R.T.: 6.709 min
 Delta R.T.: 0.000 min
 Response: 24731182
 Conc: 460.54 ng/ml



#24 AR-1248-4

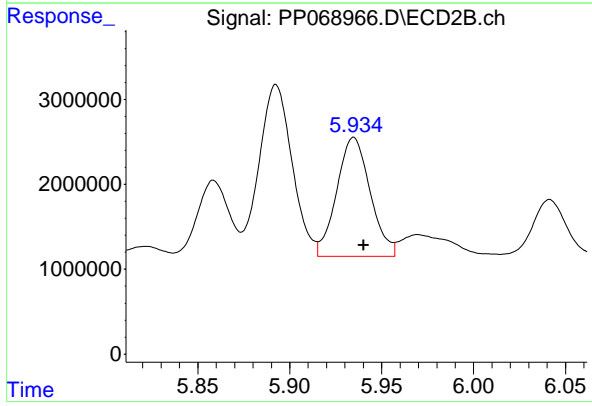
R.T.: 5.538 min
 Delta R.T.: -0.005 min
 Response: 19097650
 Conc: 463.97 ng/ml



#25 AR-1248-5

R.T.: 6.748 min
 Delta R.T.: 0.000 min
 Response: 24198103
 Conc: 465.19 ng/ml

Instrument :
 ECD_P
 ClientSampleId :
 AR1248CCC500



#25 AR-1248-5

R.T.: 5.935 min
 Delta R.T.: -0.005 min
 Response: 17765598
 Conc: 459.22 ng/ml