

Data Path : Z:\pestpcbsrv\HPCHEM1\ECD_P\Data\PP010824\
 Data File : PP062783.D
 Signal(s) : Signal #1: ECD1A.ch Signal #2: ECD2B.ch
 Acq On : 08 Jan 2024 18:42
 Operator : YP\AJ
 Sample : AR1660CCC500
 Misc :
 ALS Vial : 3 Sample Multiplier: 1

Instrument :
 ECD_P
 ClientSampleId :

Integration File signal 1: autoint1.e
 Integration File signal 2: autoint2.e
 Quant Time: Jan 08 20:51:22 2024
 Quant Method : Z:\pestpcbsrv\HPCHEM1\ECD_P\methods\PP122123.M
 Quant Title : GC EXTRACTABLES
 QLast Update : Fri Dec 22 03:29:15 2023
 Response via : Initial Calibration
 Integrator: ChemStation

Volume Inj. : 2 µl
 Signal #1 Phase : ZB-MR1 Signal #2 Phase: ZB-MR2
 Signal #1 Info : 30Mx0.32mmx 0.50µ Signal #2 Info : 30M x 0.32mm x 0.25µm

Compound	RT#1	RT#2	Resp#1	Resp#2	ng/ml	ng/ml

System Monitoring Compounds						
1) SA Tetrachlo...	4.395	3.681	121.9E6	156.0E6	56.082	52.291
2) SA Decachlor...	10.146	8.779	80424628	112.9E6	55.773	44.358
Target Compounds						
3) L1 AR-1016-1	5.566	4.788	37871022	50698167	555.683	539.921
4) L1 AR-1016-2	5.589	4.807	55800394	72266358	549.874	539.581
5) L1 AR-1016-3	5.651	4.986	34405894	39175218	545.992	536.311
6) L1 AR-1016-4	5.749	5.029	27509384	29792645	536.664	489.065
7) L1 AR-1016-5	6.045	5.246	28126605	43773815	530.922	544.070
8) L2 AR-1221-1	4.600	3.898	4305825	5804433	157.978	159.957
9) L2 AR-1221-2	4.691	3.986	6663120	8557175	327.798	309.794
10) L2 AR-1221-3	4.767	4.064	22108725	28434753	375.141	356.298
11) L3 AR-1232-1	4.767	4.064	22108725	28434753	457.017	439.623
12) L3 AR-1232-2	5.297	4.807	29260618	72266358	1103.514	1147.288
13) L3 AR-1232-3	5.589	4.986	55800394	39175218	1185.339	1150.006
14) L3 AR-1232-4	5.749	5.071	27509384	38593978	1142.840	1182.822
15) L3 AR-1232-5	5.841	5.246	23145642	43773815	1157.796	1237.929
16) L4 AR-1242-1	5.566	4.788	37871022	50698167	675.703	659.772
17) L4 AR-1242-2	5.589	4.807	55800394	72266358	675.942	670.791
18) L4 AR-1242-3	5.651	4.986	34405894	39175218	672.243	664.964
19) L4 AR-1242-4	5.749	5.071	27509384	38593978	656.880	626.678
20) L4 AR-1242-5	6.489	5.604	7844727	40452047	182.882	560.003 #
21) L5 AR-1248-1	5.566	4.788	37871022	50698167	877.588	873.832
22) L5 AR-1248-2	5.841	5.029	23145642	29792645	341.036	341.944
23) L5 AR-1248-3	6.045	5.071	28126605	38593978	381.634	422.727
24) L5 AR-1248-4	6.450	5.246	9066715	43773815	119.033	407.745 #
25) L5 AR-1248-5	6.489	5.645	7844727	11364633	103.469	114.499
26) L6 AR-1254-1	6.425	5.604	22401428	40452047	271.458	254.811
27) L6 AR-1254-2	6.643	5.753	20414277	29003111	159.239	207.955 #
28) L6 AR-1254-3	7.011	6.178	10180539	52952547	78.850	239.611 #
29) L6 AR-1254-4	7.298	6.393	7592415	4335053	84.259	33.526 #
30) L6 AR-1254-5	7.717	6.817	56694195	95398064	578.708	497.180
31) L7 AR-1260-1	7.176	6.295	48722524	76456418	492.138	478.298
32) L7 AR-1260-2	7.434	6.485	53181204	90230858	468.719	492.830
33) L7 AR-1260-3	7.795	6.641	37833919	84599112	441.558	470.362
34) L7 AR-1260-4	8.021	7.118	41361591	68539752	427.114	465.810
35) L7 AR-1260-5	8.340	7.362	76815613	154.4E6	430.967	479.309
36) L8 AR-1262-1	7.854	6.909	19727620	38326435	362.669	431.390
37) L8 AR-1262-2	8.340	7.118	76815613	68539752	378.789	366.863
38) L8 AR-1262-3	8.662	7.648	51367117	31654504	381.816	290.218
39) L8 AR-1262-4	8.739	7.712	15021285	106.7E6	147.639	416.015 #
40) L8 AR-1262-5	9.394	8.215	22724621	34708865	351.264	304.633
41) L9 AR-1268-1	8.662	7.648	51367117	31654504	227.377	82.138 #

Data Path : Z:\pestpcbsrv\HPCHEM1\ECD_P\Data\PP010824\
 Data File : PP062783.D
 Signal(s) : Signal #1: ECD1A.ch Signal #2: ECD2B.ch
 Acq On : 08 Jan 2024 18:42
 Operator : YP\AJ
 Sample : AR1660CCC500
 Misc :
 ALS Vial : 3 Sample Multiplier: 1

Instrument :
 ECD_P
 ClientSampleId :

Integration File signal 1: autoint1.e
 Integration File signal 2: autoint2.e
 Quant Time: Jan 08 20:51:22 2024
 Quant Method : Z:\pestpcbsrv\HPCHEM1\ECD_P\methods\PP122123.M
 Quant Title : GC EXTRACTABLES
 QLast Update : Fri Dec 22 03:29:15 2023
 Response via : Initial Calibration
 Integrator: ChemStation

Volume Inj. : 2 µl
 Signal #1 Phase : ZB-MR1 Signal #2 Phase: ZB-MR2
 Signal #1 Info : 30Mx0.32mmx 0.50µ Signal #2 Info : 30M x 0.32mm x 0.25µm

	Compound	RT#1	RT#2	Resp#1	Resp#2	ng/ml	ng/ml
42)	L9 AR-1268-2	8.739	7.712	15021285	106.7E6	74.367	301.506 #
43)	L9 AR-1268-3	8.969	7.922	1145242	1886277	6.697	6.020
44)	L9 AR-1268-4	9.394	8.215	22724621	34708865	335.690	277.920
45)	L9 AR-1268-5	9.809	8.514	6327164	9974336	12.430	11.367

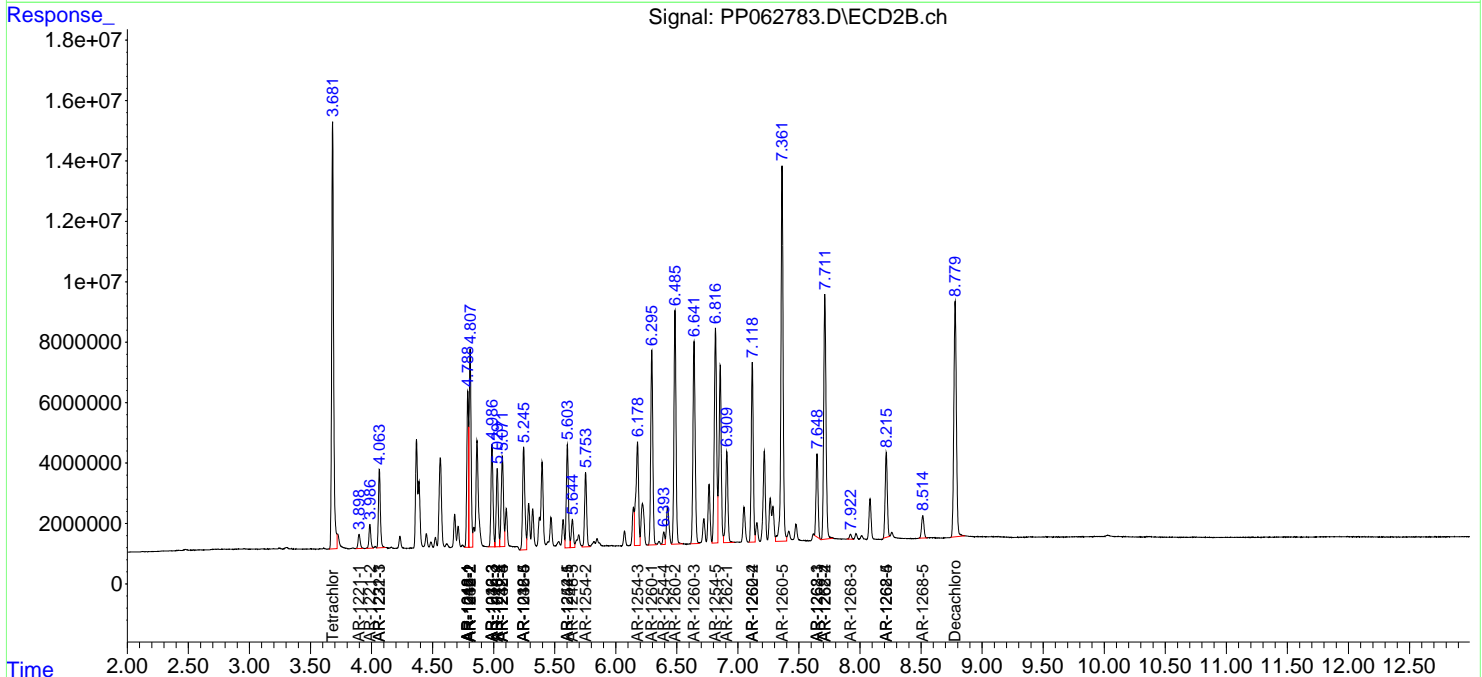
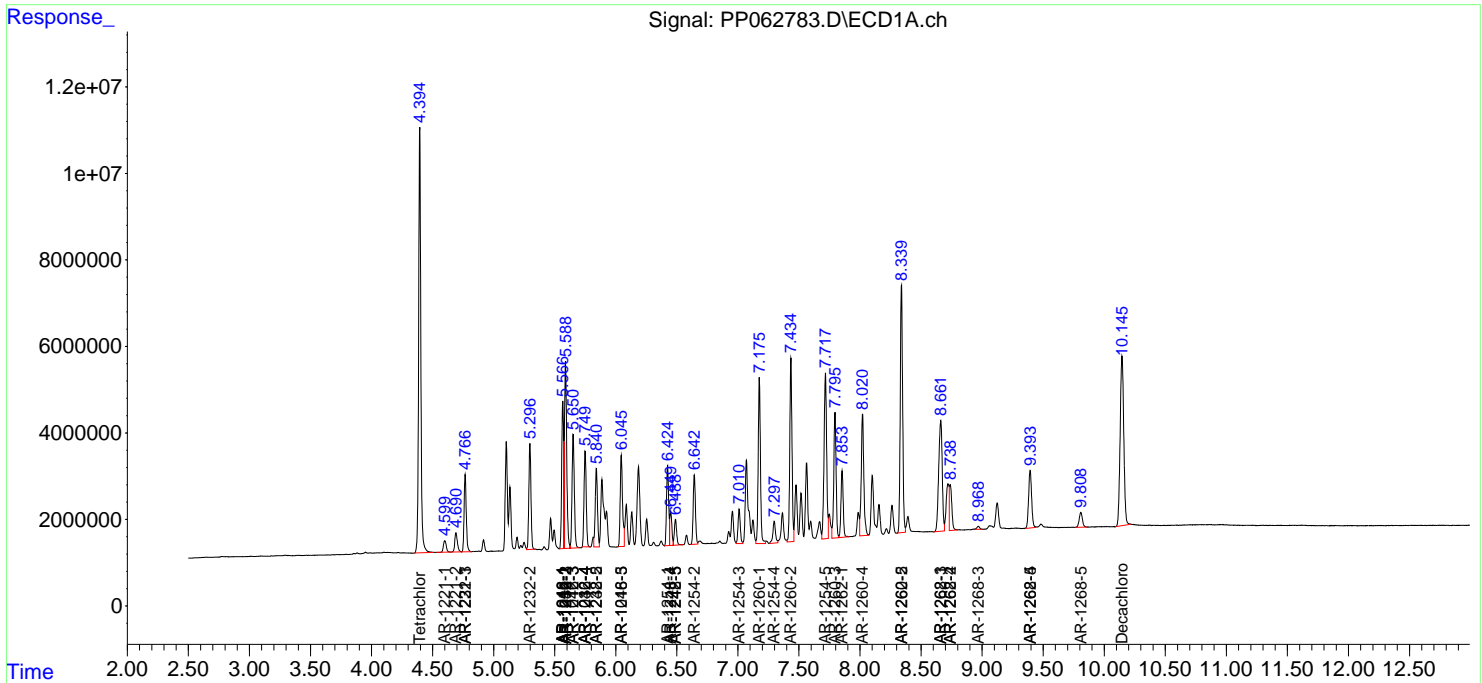
(f)=RT Delta > 1/2 Window (#)=Amounts differ by > 25% (m)=manual int.

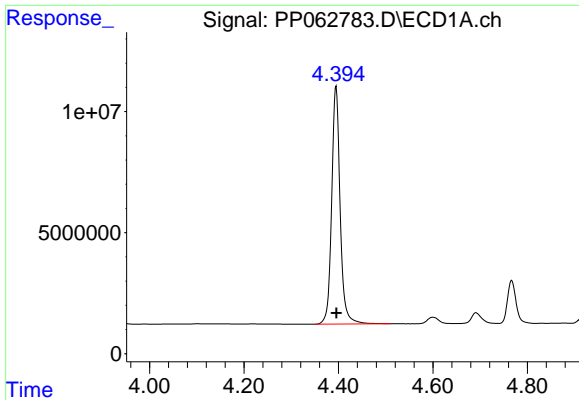
Data Path : Z:\pestpcbsrv\HPCHEM1\ECD_P\Data\PP010824\
 Data File : PP062783.D
 Signal(s) : Signal #1: ECD1A.ch Signal #2: ECD2B.ch
 Acq On : 08 Jan 2024 18:42
 Operator : YP\AJ
 Sample : AR1660CCC500
 Misc :
 ALS Vial : 3 Sample Multiplier: 1

Instrument :
 ECD_P
 ClientSampleId :

Integration File signal 1: autoint1.e
 Integration File signal 2: autoint2.e
 Quant Time: Jan 08 20:51:22 2024
 Quant Method : Z:\pestpcbsrv\HPCHEM1\ECD_P\methods\PP122123.M
 Quant Title : GC EXTRACTABLES
 QLast Update : Fri Dec 22 03:29:15 2023
 Response via : Initial Calibration
 Integrator: ChemStation

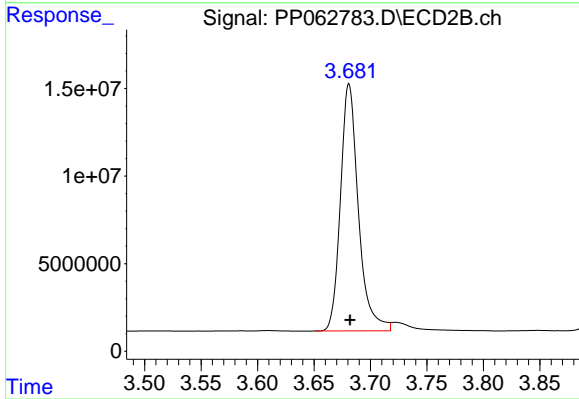
Volume Inj. : 2 µl
 Signal #1 Phase : ZB-MR1 Signal #2 Phase: ZB-MR2
 Signal #1 Info : 30Mx0.32mmx 0.50µ Signal #2 Info : 30M x 0.32mm x 0.25µm



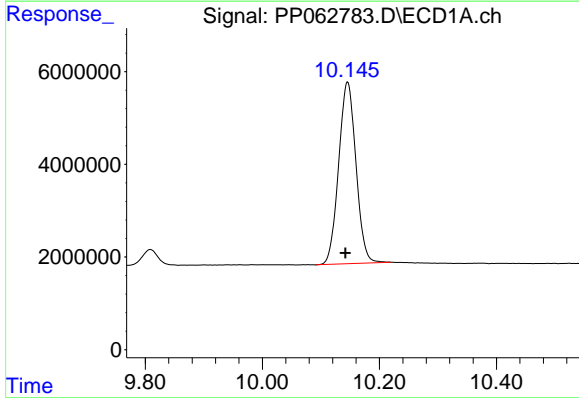


#1 Tetrachloro-m-xylene
 R.T.: 4.395 min
 Delta R.T.: -0.001 min
 Response: 121926090
 Conc: 56.08 ng/ml

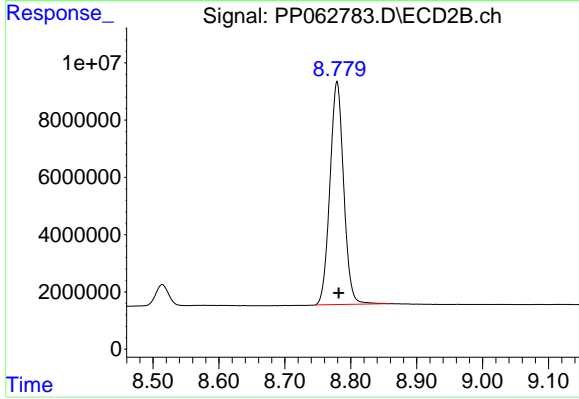
Instrument :
 ECD_P
 ClientSampleId :



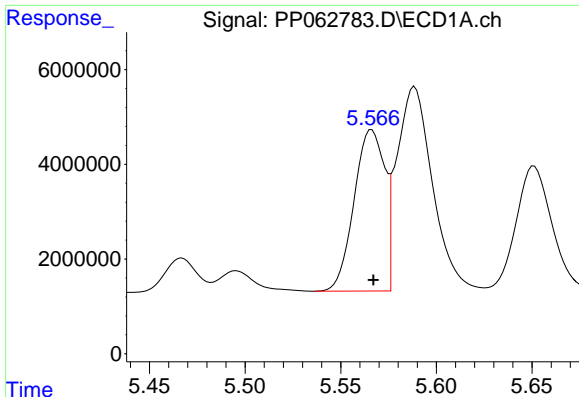
#1 Tetrachloro-m-xylene
 R.T.: 3.681 min
 Delta R.T.: 0.000 min
 Response: 156046618
 Conc: 52.29 ng/ml



#2 Decachlorobiphenyl
 R.T.: 10.146 min
 Delta R.T.: 0.004 min
 Response: 80424628
 Conc: 55.77 ng/ml



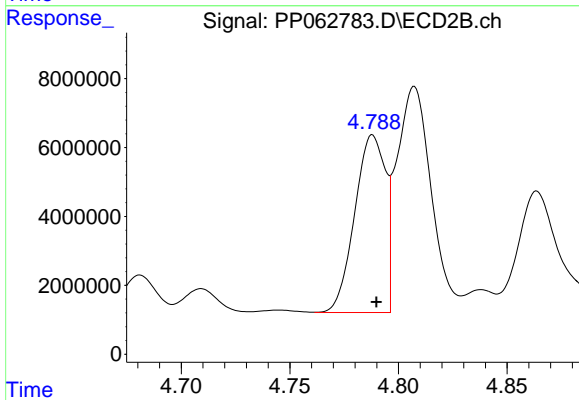
#2 Decachlorobiphenyl
 R.T.: 8.779 min
 Delta R.T.: -0.003 min
 Response: 112923480
 Conc: 44.36 ng/ml



#3 AR-1016-1

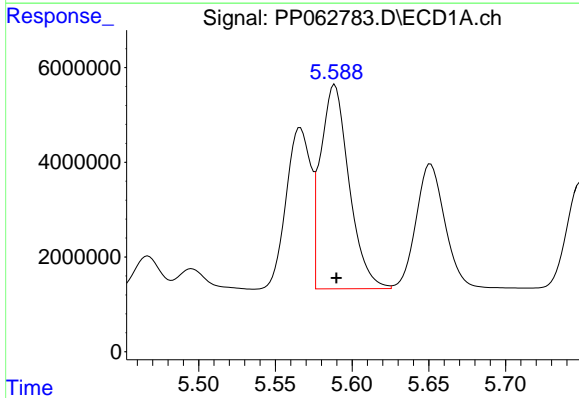
R.T.: 5.566 min
 Delta R.T.: 0.000 min
 Response: 37871022
 Conc: 555.68 ng/ml

Instrument :
 ECD_P
 ClientSampleId :



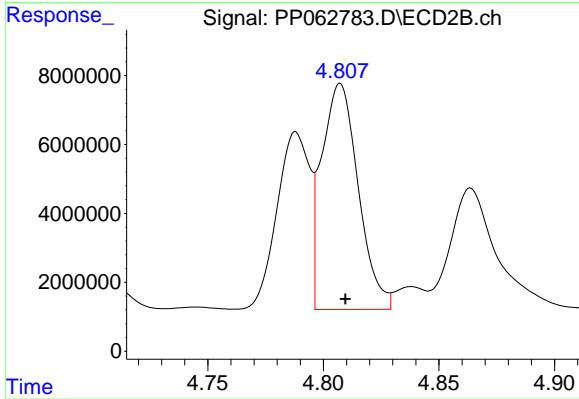
#3 AR-1016-1

R.T.: 4.788 min
 Delta R.T.: -0.002 min
 Response: 50698167
 Conc: 539.92 ng/ml



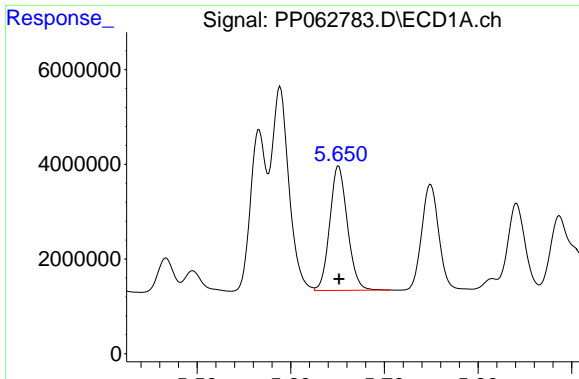
#4 AR-1016-2

R.T.: 5.589 min
 Delta R.T.: -0.001 min
 Response: 55800394
 Conc: 549.87 ng/ml



#4 AR-1016-2

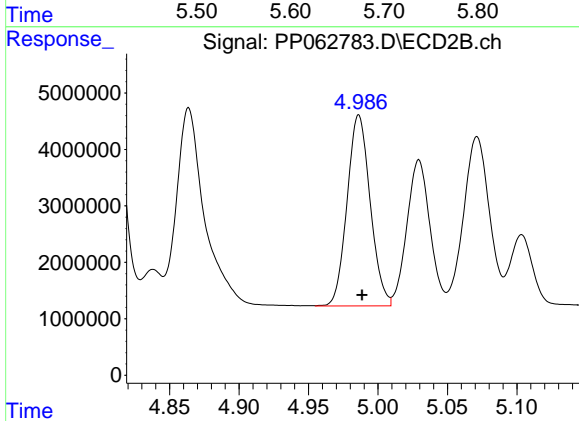
R.T.: 4.807 min
 Delta R.T.: -0.002 min
 Response: 72266358
 Conc: 539.58 ng/ml



#5 AR-1016-3

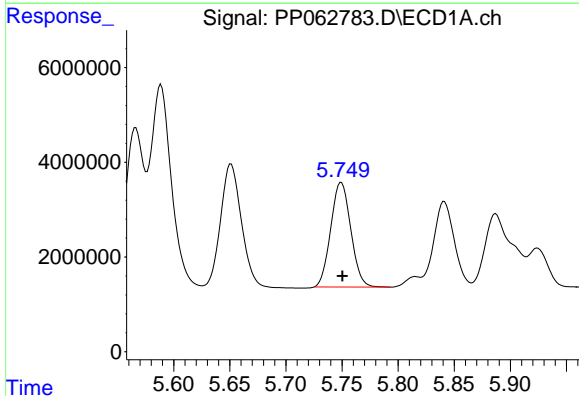
R.T.: 5.651 min
 Delta R.T.: 0.000 min
 Response: 34405894
 Conc: 545.99 ng/ml

Instrument :
 ECD_P
 ClientSampleId :



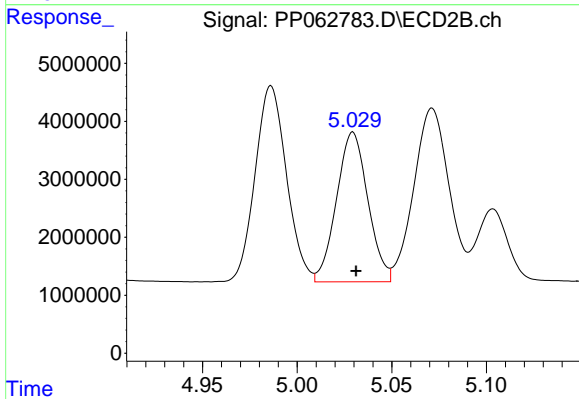
#5 AR-1016-3

R.T.: 4.986 min
 Delta R.T.: -0.002 min
 Response: 39175218
 Conc: 536.31 ng/ml



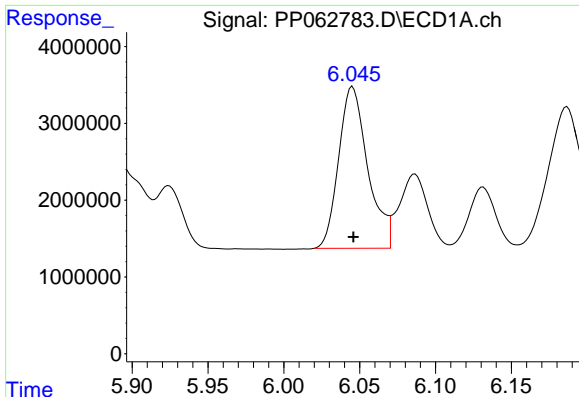
#6 AR-1016-4

R.T.: 5.749 min
 Delta R.T.: 0.000 min
 Response: 27509384
 Conc: 536.66 ng/ml



#6 AR-1016-4

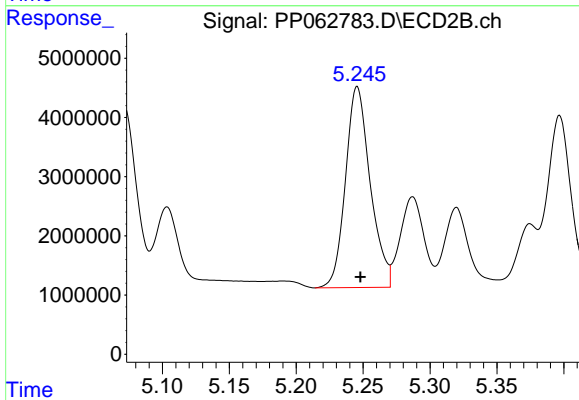
R.T.: 5.029 min
 Delta R.T.: -0.002 min
 Response: 29792645
 Conc: 489.06 ng/ml



#7 AR-1016-5

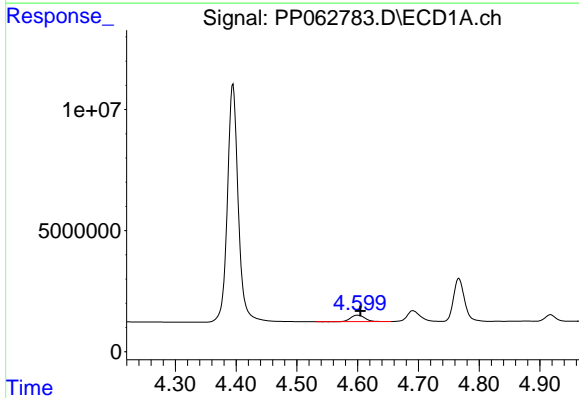
R.T.: 6.045 min
 Delta R.T.: 0.000 min
 Response: 28126605
 Conc: 530.92 ng/ml

Instrument :
 ECD_P
 ClientSampleId :



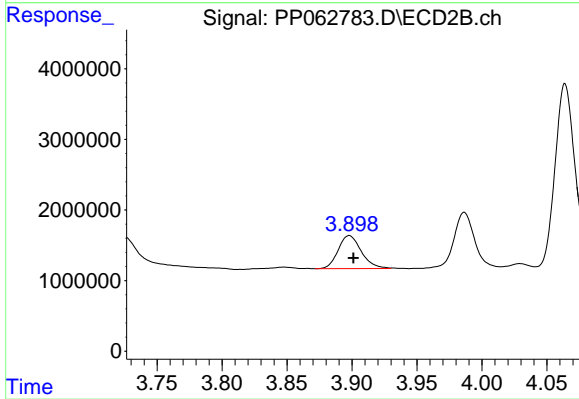
#7 AR-1016-5

R.T.: 5.246 min
 Delta R.T.: -0.002 min
 Response: 43773815
 Conc: 544.07 ng/ml



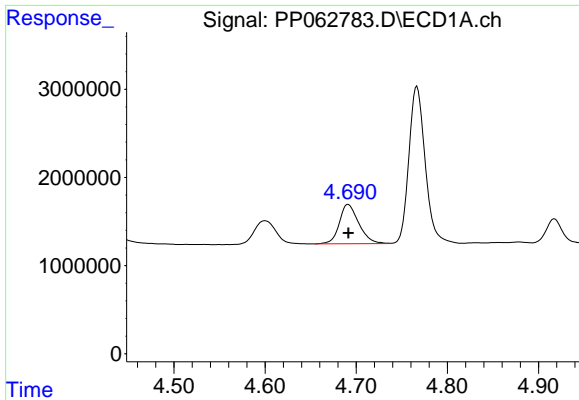
#8 AR-1221-1

R.T.: 4.600 min
 Delta R.T.: -0.004 min
 Response: 4305825
 Conc: 157.98 ng/ml



#8 AR-1221-1

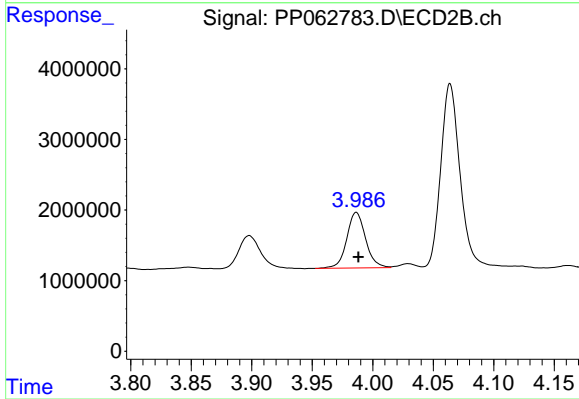
R.T.: 3.898 min
 Delta R.T.: -0.003 min
 Response: 5804433
 Conc: 159.96 ng/ml



#9 AR-1221-2

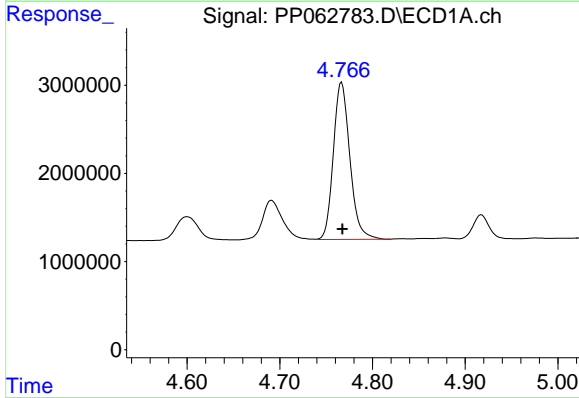
R.T.: 4.691 min
 Delta R.T.: 0.000 min
 Response: 6663120
 Conc: 327.80 ng/ml

Instrument :
 ECD_P
 ClientSampleId :



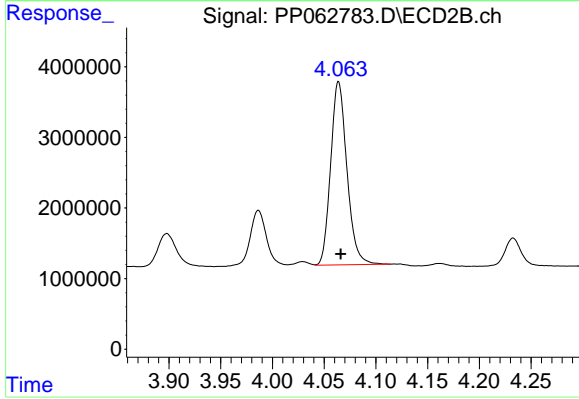
#9 AR-1221-2

R.T.: 3.986 min
 Delta R.T.: -0.002 min
 Response: 8557175
 Conc: 309.79 ng/ml



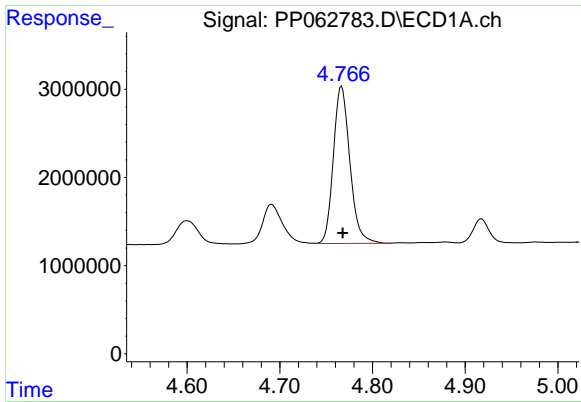
#10 AR-1221-3

R.T.: 4.767 min
 Delta R.T.: 0.000 min
 Response: 22108725
 Conc: 375.14 ng/ml



#10 AR-1221-3

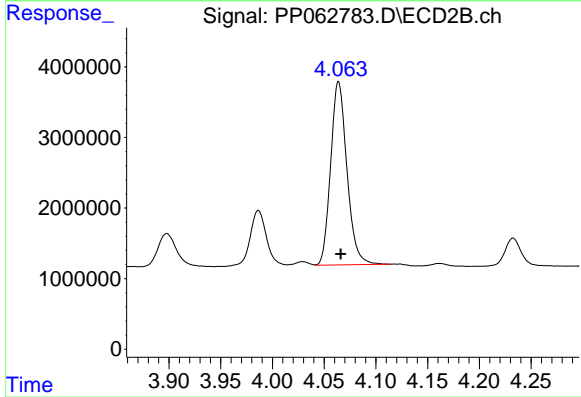
R.T.: 4.064 min
 Delta R.T.: -0.002 min
 Response: 28434753
 Conc: 356.30 ng/ml



#11 AR-1232-1

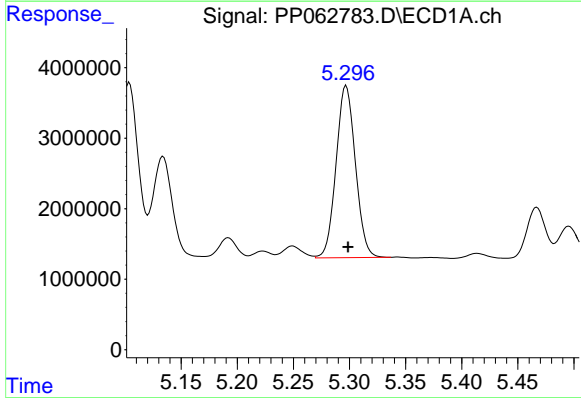
R.T.: 4.767 min
 Delta R.T.: -0.001 min
 Response: 22108725
 Conc: 457.02 ng/ml

Instrument :
 ECD_P
 ClientSampleId :



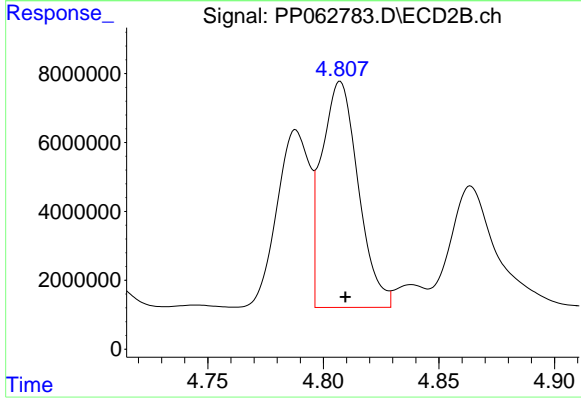
#11 AR-1232-1

R.T.: 4.064 min
 Delta R.T.: -0.002 min
 Response: 28434753
 Conc: 439.62 ng/ml



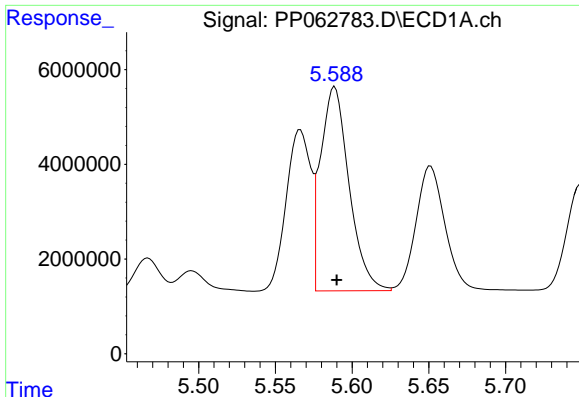
#12 AR-1232-2

R.T.: 5.297 min
 Delta R.T.: -0.002 min
 Response: 29260618
 Conc: 1103.51 ng/ml



#12 AR-1232-2

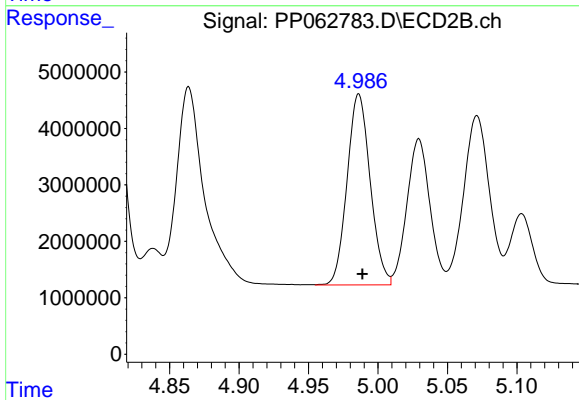
R.T.: 4.807 min
 Delta R.T.: -0.002 min
 Response: 72266358
 Conc: 1147.29 ng/ml



#13 AR-1232-3

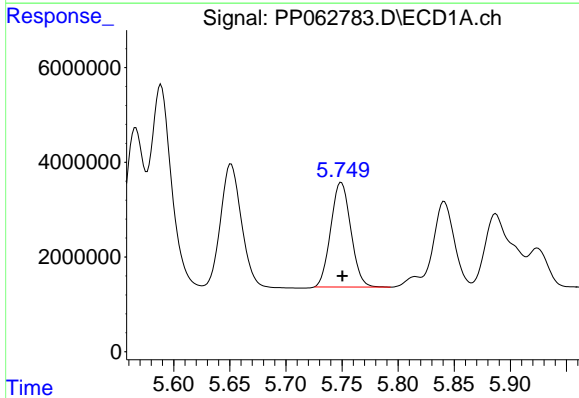
R.T.: 5.589 min
 Delta R.T.: -0.001 min
 Response: 55800394
 Conc: 1185.34 ng/ml

Instrument :
 ECD_P
 ClientSampleId :



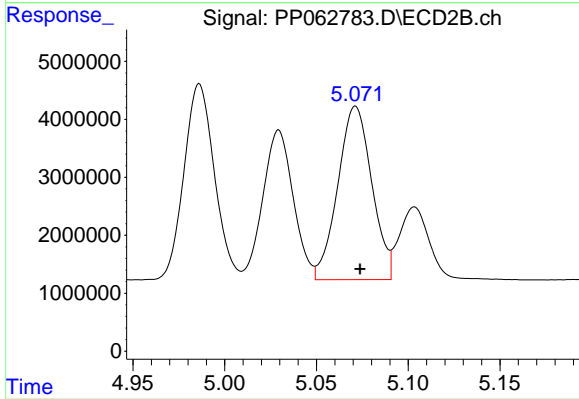
#13 AR-1232-3

R.T.: 4.986 min
 Delta R.T.: -0.003 min
 Response: 39175218
 Conc: 1150.01 ng/ml



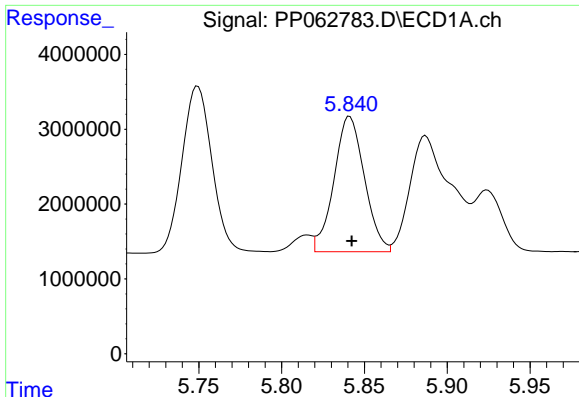
#14 AR-1232-4

R.T.: 5.749 min
 Delta R.T.: -0.001 min
 Response: 27509384
 Conc: 1142.84 ng/ml



#14 AR-1232-4

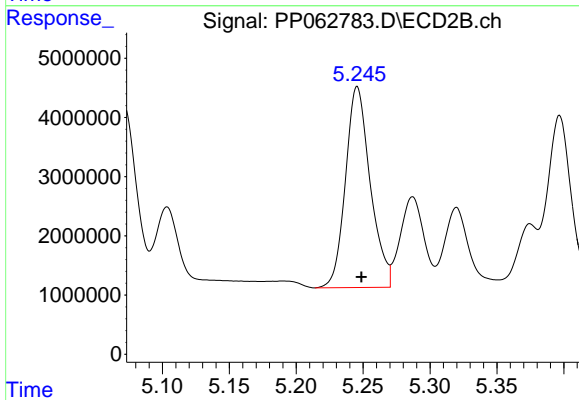
R.T.: 5.071 min
 Delta R.T.: -0.003 min
 Response: 38593978
 Conc: 1182.82 ng/ml



#15 AR-1232-5

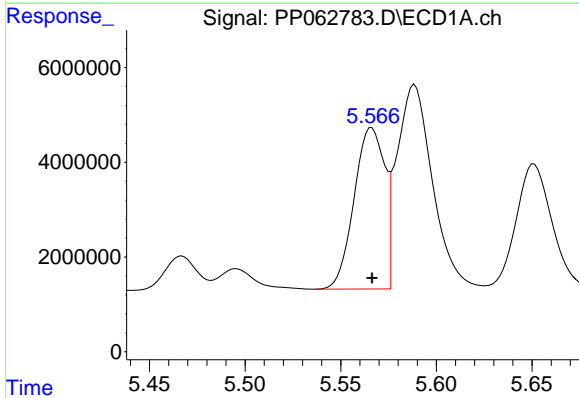
R.T.: 5.841 min
 Delta R.T.: -0.001 min
 Response: 23145642
 Conc: 1157.80 ng/ml

Instrument :
 ECD_P
 ClientSampleId :



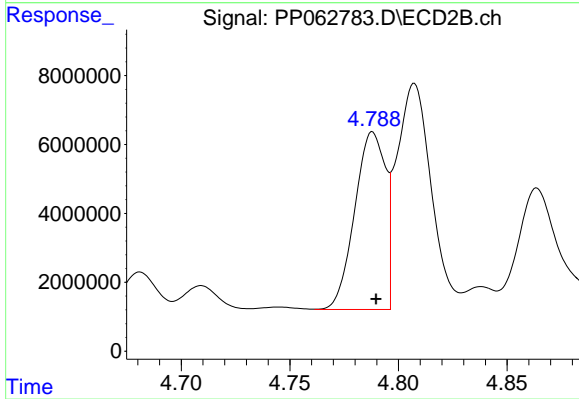
#15 AR-1232-5

R.T.: 5.246 min
 Delta R.T.: -0.003 min
 Response: 43773815
 Conc: 1237.93 ng/ml



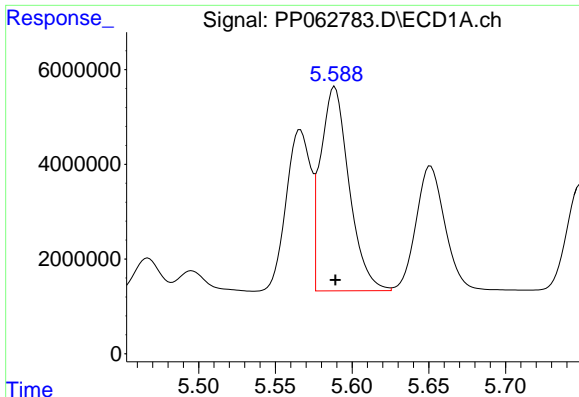
#16 AR-1242-1

R.T.: 5.566 min
 Delta R.T.: 0.000 min
 Response: 37871022
 Conc: 675.70 ng/ml



#16 AR-1242-1

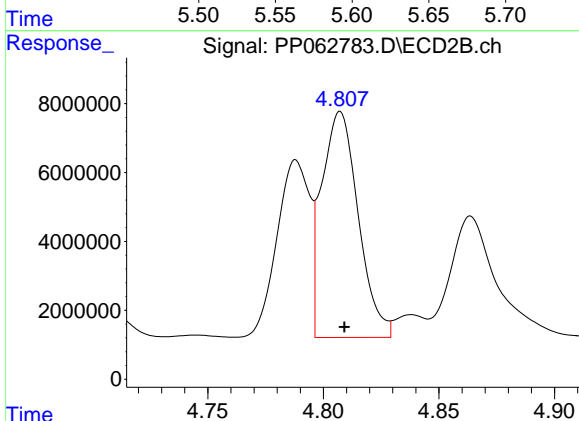
R.T.: 4.788 min
 Delta R.T.: -0.002 min
 Response: 50698167
 Conc: 659.77 ng/ml



#17 AR-1242-2

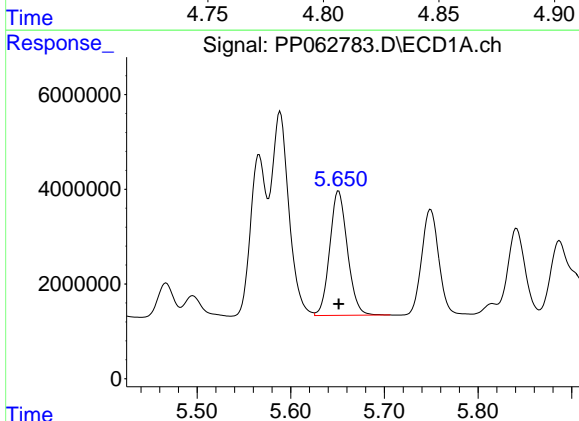
R.T.: 5.589 min
 Delta R.T.: 0.000 min
 Response: 55800394
 Conc: 675.94 ng/ml

Instrument :
 ECD_P
 ClientSampleId :



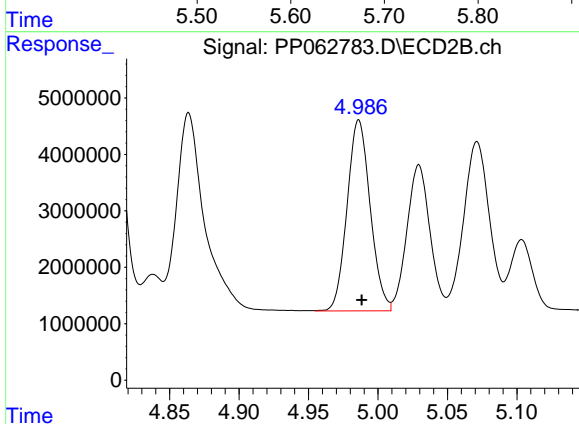
#17 AR-1242-2

R.T.: 4.807 min
 Delta R.T.: -0.002 min
 Response: 72266358
 Conc: 670.79 ng/ml



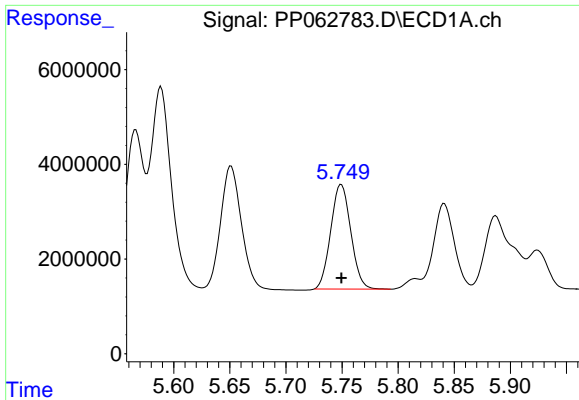
#18 AR-1242-3

R.T.: 5.651 min
 Delta R.T.: 0.000 min
 Response: 34405894
 Conc: 672.24 ng/ml



#18 AR-1242-3

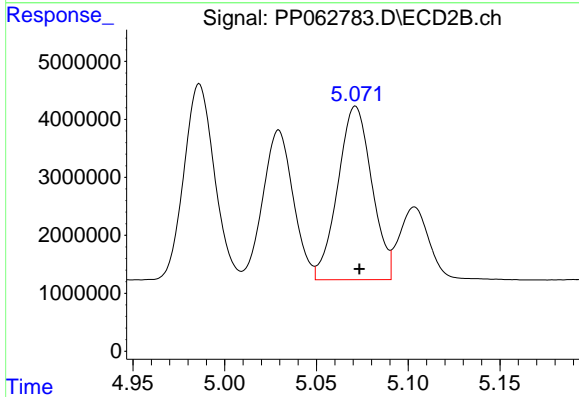
R.T.: 4.986 min
 Delta R.T.: -0.002 min
 Response: 39175218
 Conc: 664.96 ng/ml



#19 AR-1242-4

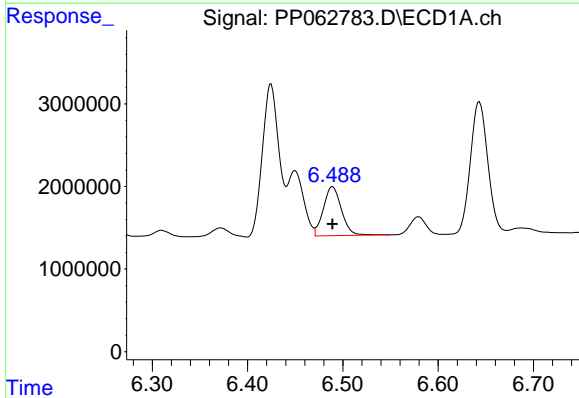
R.T.: 5.749 min
 Delta R.T.: 0.000 min
 Response: 27509384
 Conc: 656.88 ng/ml

Instrument :
 ECD_P
 ClientSampleId :



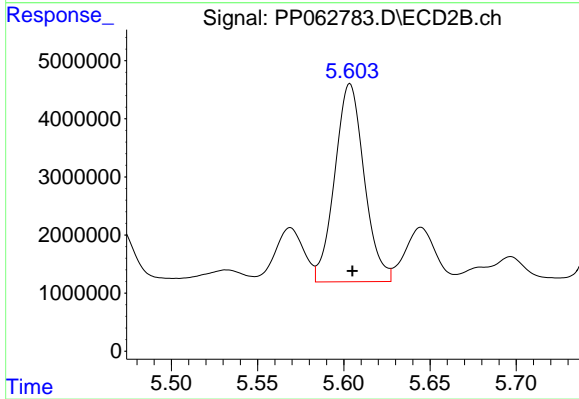
#19 AR-1242-4

R.T.: 5.071 min
 Delta R.T.: -0.002 min
 Response: 38593978
 Conc: 626.68 ng/ml



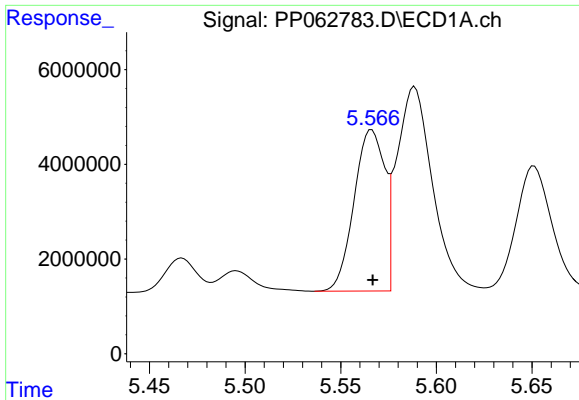
#20 AR-1242-5

R.T.: 6.489 min
 Delta R.T.: 0.000 min
 Response: 7844727
 Conc: 182.88 ng/ml



#20 AR-1242-5

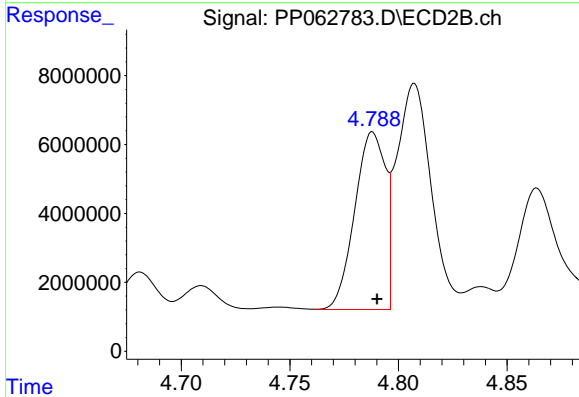
R.T.: 5.604 min
 Delta R.T.: -0.002 min
 Response: 40452047
 Conc: 560.00 ng/ml



#21 AR-1248-1

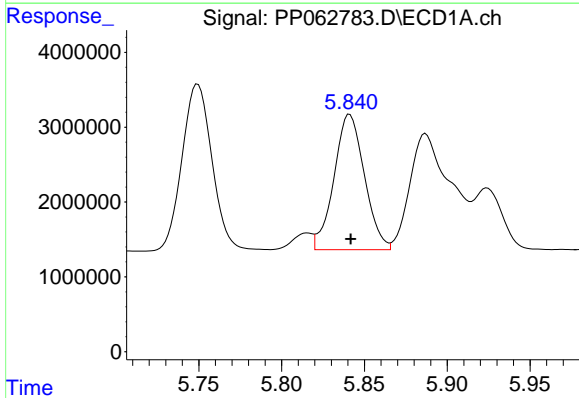
R.T.: 5.566 min
 Delta R.T.: 0.000 min
 Response: 37871022
 Conc: 877.59 ng/ml

Instrument :
 ECD_P
 ClientSampleId :



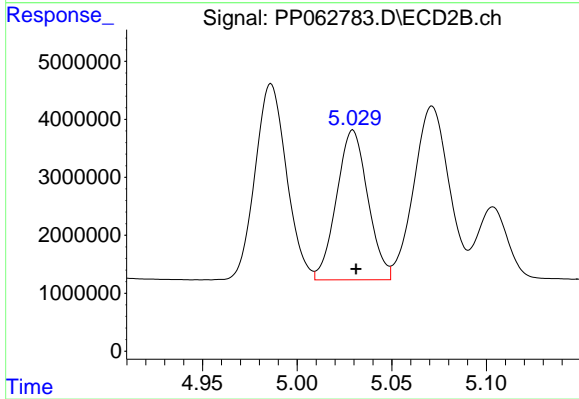
#21 AR-1248-1

R.T.: 4.788 min
 Delta R.T.: -0.002 min
 Response: 50698167
 Conc: 873.83 ng/ml



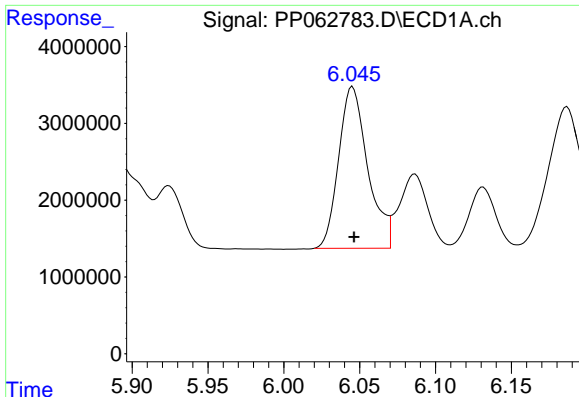
#22 AR-1248-2

R.T.: 5.841 min
 Delta R.T.: 0.000 min
 Response: 23145642
 Conc: 341.04 ng/ml



#22 AR-1248-2

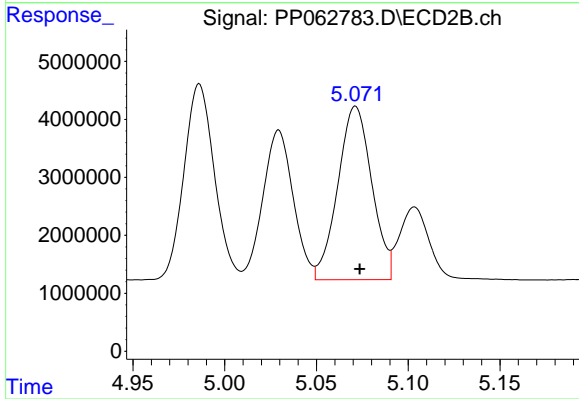
R.T.: 5.029 min
 Delta R.T.: -0.002 min
 Response: 29792645
 Conc: 341.94 ng/ml



#23 AR-1248-3

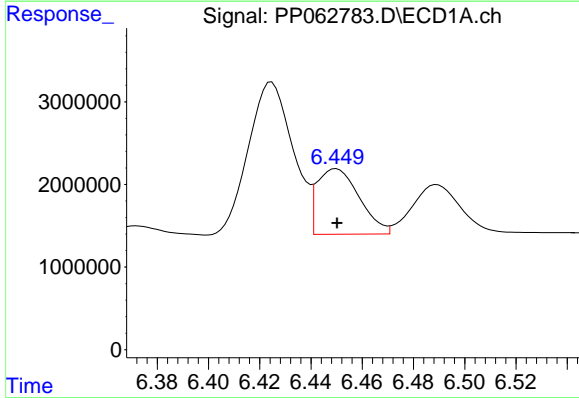
R.T.: 6.045 min
 Delta R.T.: 0.000 min
 Response: 28126605
 Conc: 381.63 ng/ml

Instrument :
 ECD_P
 ClientSampleId :



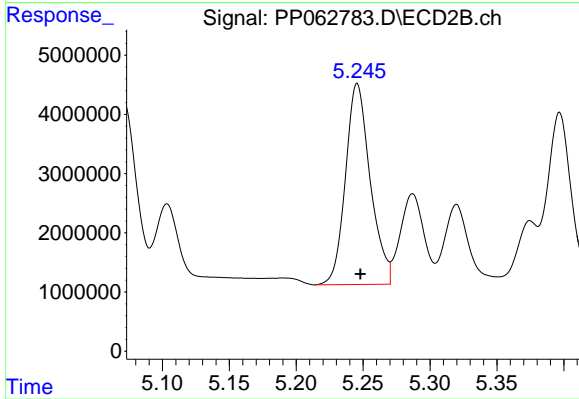
#23 AR-1248-3

R.T.: 5.071 min
 Delta R.T.: -0.002 min
 Response: 38593978
 Conc: 422.73 ng/ml



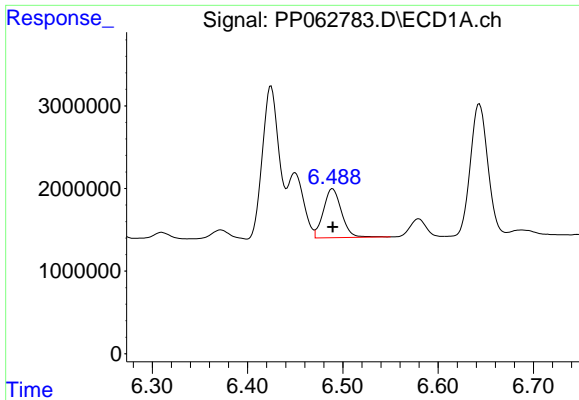
#24 AR-1248-4

R.T.: 6.450 min
 Delta R.T.: 0.000 min
 Response: 9066715
 Conc: 119.03 ng/ml



#24 AR-1248-4

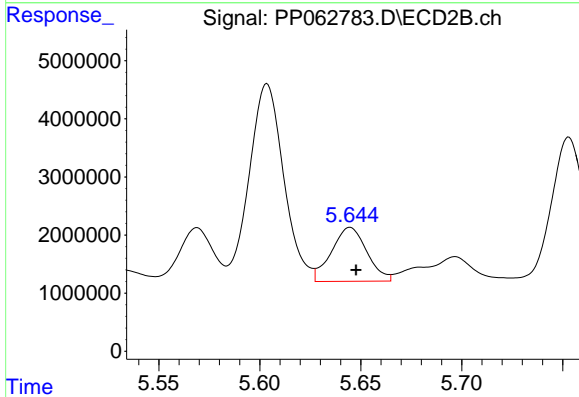
R.T.: 5.246 min
 Delta R.T.: -0.002 min
 Response: 43773815
 Conc: 407.74 ng/ml



#25 AR-1248-5

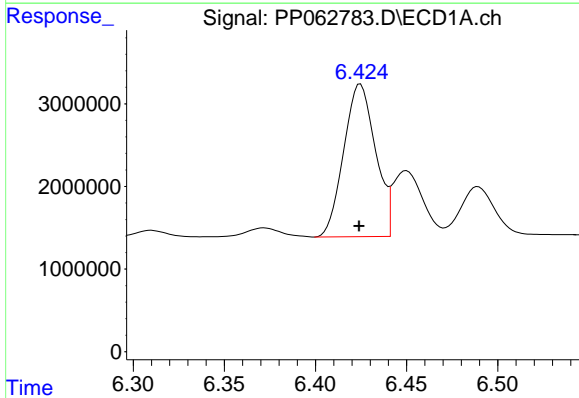
R.T.: 6.489 min
 Delta R.T.: 0.000 min
 Response: 7844727
 Conc: 103.47 ng/ml

Instrument :
 ECD_P
 ClientSampleId :



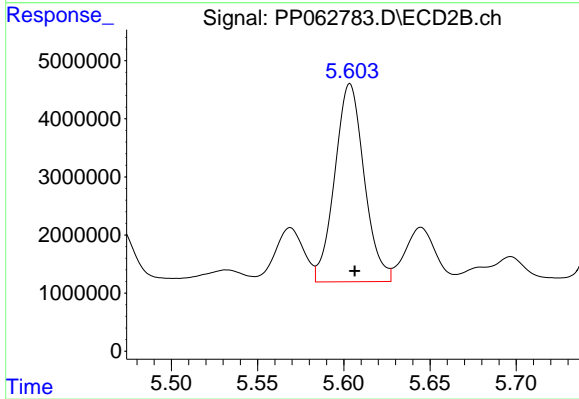
#25 AR-1248-5

R.T.: 5.645 min
 Delta R.T.: -0.003 min
 Response: 11364633
 Conc: 114.50 ng/ml



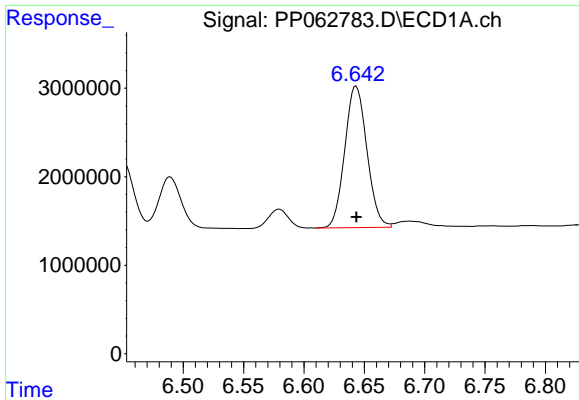
#26 AR-1254-1

R.T.: 6.425 min
 Delta R.T.: 0.000 min
 Response: 22401428
 Conc: 271.46 ng/ml



#26 AR-1254-1

R.T.: 5.604 min
 Delta R.T.: -0.003 min
 Response: 40452047
 Conc: 254.81 ng/ml

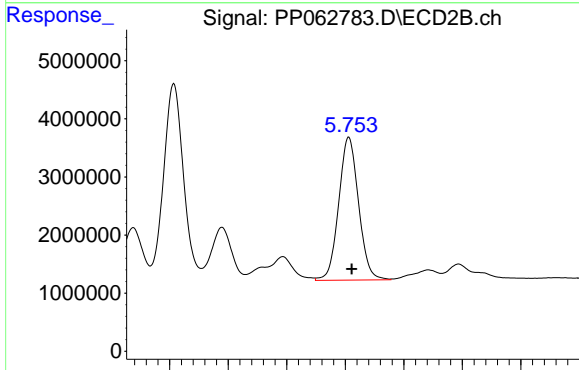


#27 AR-1254-2

R.T.: 6.643 min
 Delta R.T.: 0.000 min
 Response: 20414277
 Conc: 159.24 ng/ml

Instrument :
 ECD_P
 ClientSampleId :

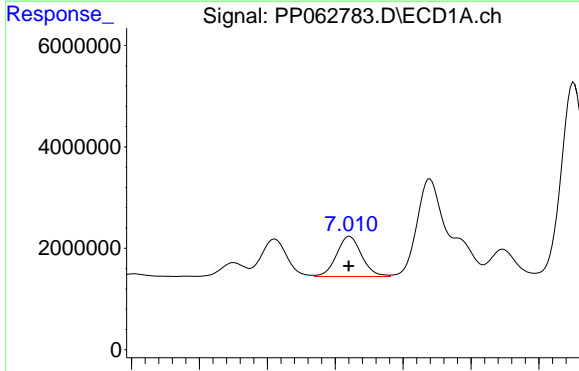
Time 6.50 6.55 6.60 6.65 6.70 6.75 6.80



#27 AR-1254-2

R.T.: 5.753 min
 Delta R.T.: -0.002 min
 Response: 29003111
 Conc: 207.96 ng/ml

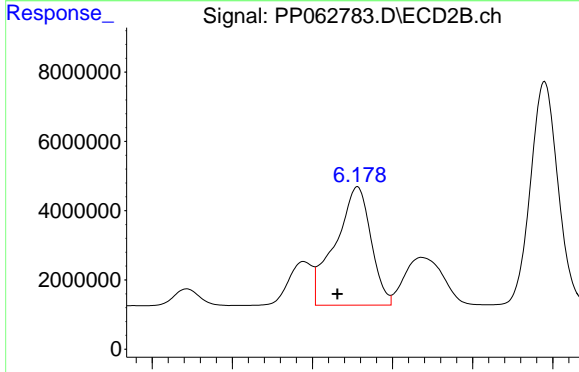
Time 5.60 5.65 5.70 5.75 5.80 5.85 5.90



#28 AR-1254-3

R.T.: 7.011 min
 Delta R.T.: 0.000 min
 Response: 10180539
 Conc: 78.85 ng/ml

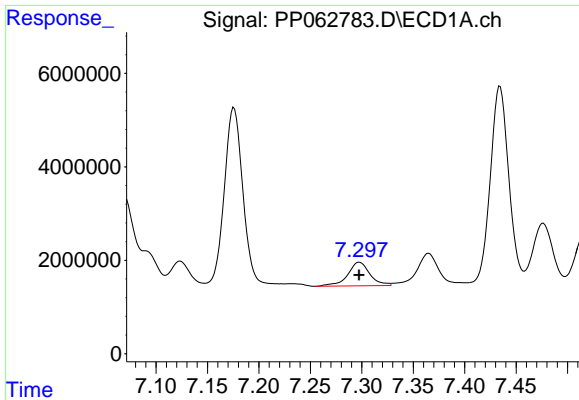
Time 6.85 6.90 6.95 7.00 7.05 7.10 7.15



#28 AR-1254-3

R.T.: 6.178 min
 Delta R.T.: 0.013 min
 Response: 52952547
 Conc: 239.61 ng/ml

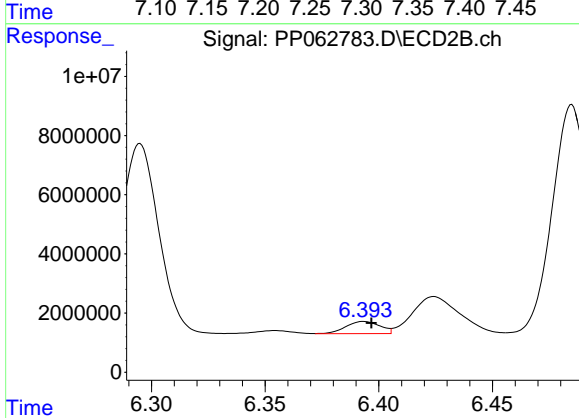
Time 6.05 6.10 6.15 6.20 6.25 6.30



#29 AR-1254-4

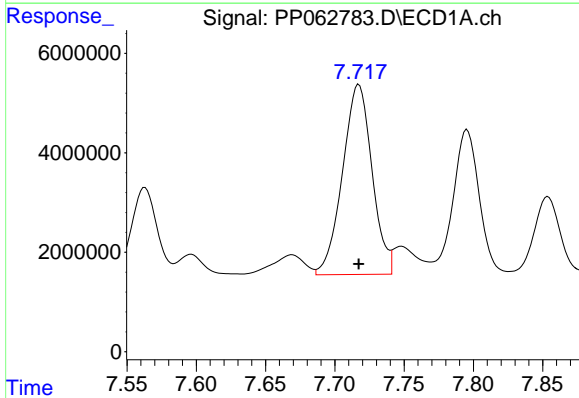
R.T.: 7.298 min
 Delta R.T.: 0.000 min
 Response: 7592415
 Conc: 84.26 ng/ml

Instrument :
 ECD_P
 ClientSampleId :



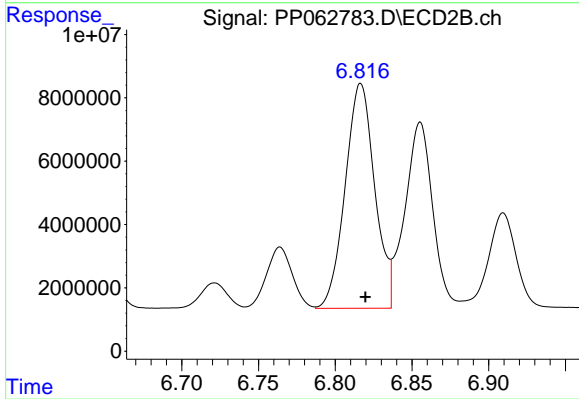
#29 AR-1254-4

R.T.: 6.393 min
 Delta R.T.: -0.003 min
 Response: 4335053
 Conc: 33.53 ng/ml



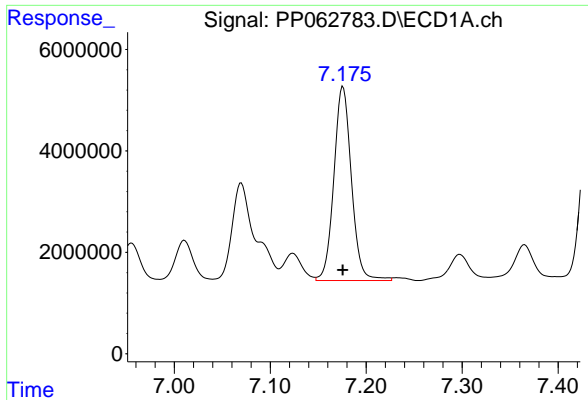
#30 AR-1254-5

R.T.: 7.717 min
 Delta R.T.: 0.000 min
 Response: 56694195
 Conc: 578.71 ng/ml



#30 AR-1254-5

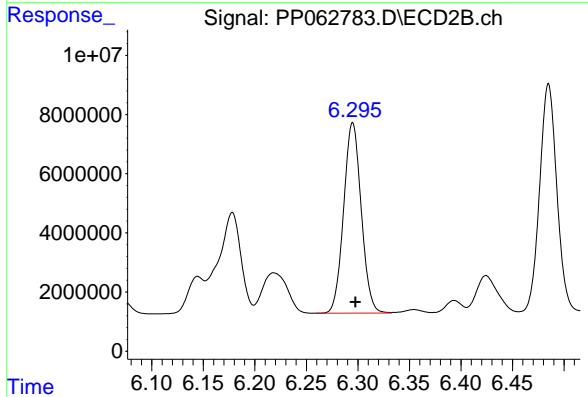
R.T.: 6.817 min
 Delta R.T.: -0.003 min
 Response: 95398064
 Conc: 497.18 ng/ml



#31 AR-1260-1

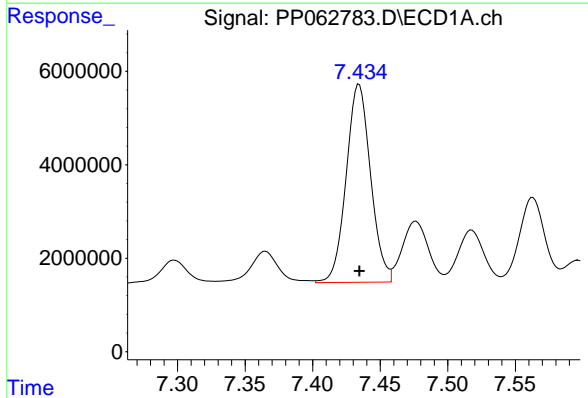
R.T.: 7.176 min
 Delta R.T.: 0.000 min
 Response: 48722524
 Conc: 492.14 ng/ml

Instrument :
 ECD_P
 ClientSampleId :



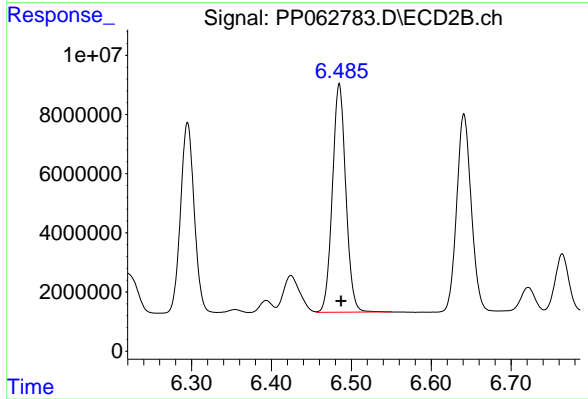
#31 AR-1260-1

R.T.: 6.295 min
 Delta R.T.: -0.003 min
 Response: 76456418
 Conc: 478.30 ng/ml



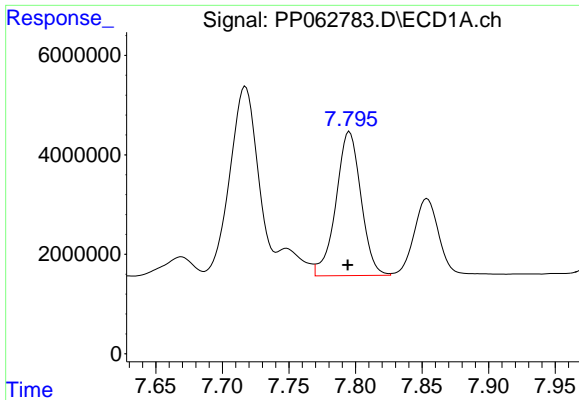
#32 AR-1260-2

R.T.: 7.434 min
 Delta R.T.: 0.000 min
 Response: 53181204
 Conc: 468.72 ng/ml



#32 AR-1260-2

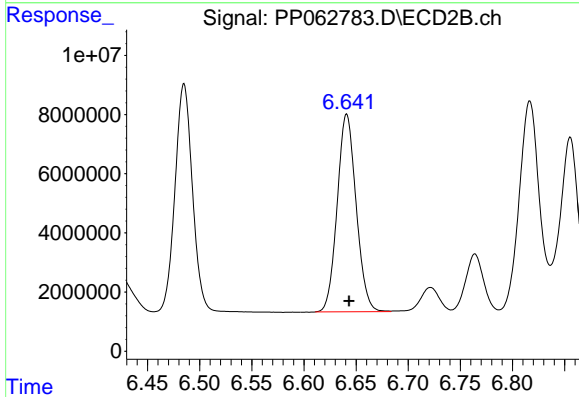
R.T.: 6.485 min
 Delta R.T.: -0.002 min
 Response: 90230858
 Conc: 492.83 ng/ml



#33 AR-1260-3

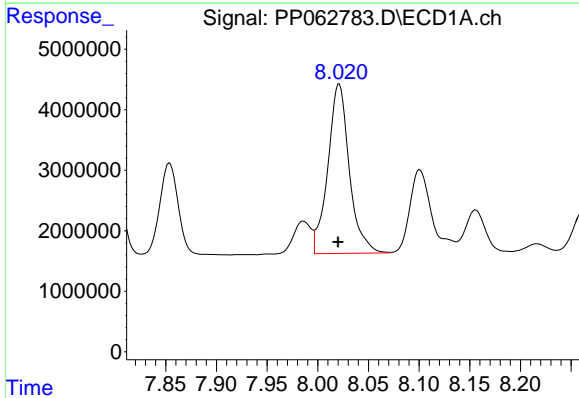
R.T.: 7.795 min
 Delta R.T.: 0.001 min
 Response: 37833919
 Conc: 441.56 ng/ml

Instrument :
 ECD_P
 ClientSampleId :



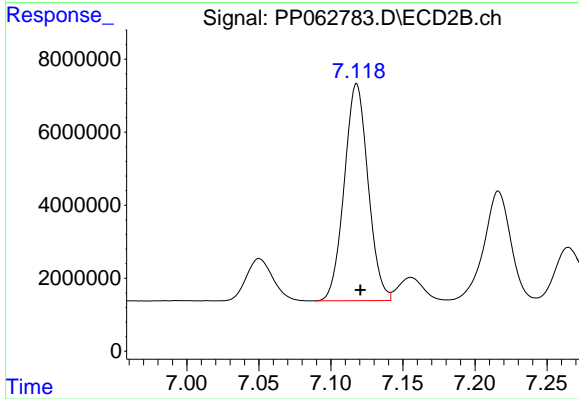
#33 AR-1260-3

R.T.: 6.641 min
 Delta R.T.: -0.002 min
 Response: 84599112
 Conc: 470.36 ng/ml



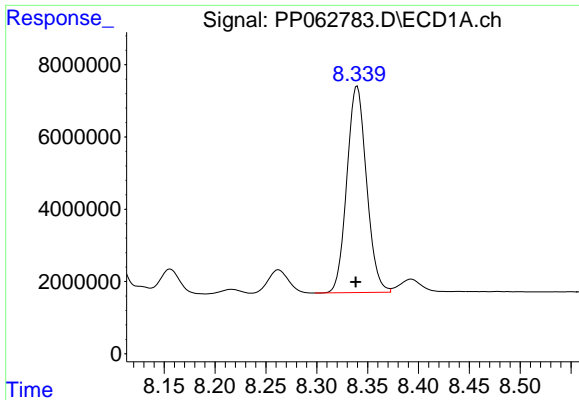
#34 AR-1260-4

R.T.: 8.021 min
 Delta R.T.: 0.001 min
 Response: 41361591
 Conc: 427.11 ng/ml



#34 AR-1260-4

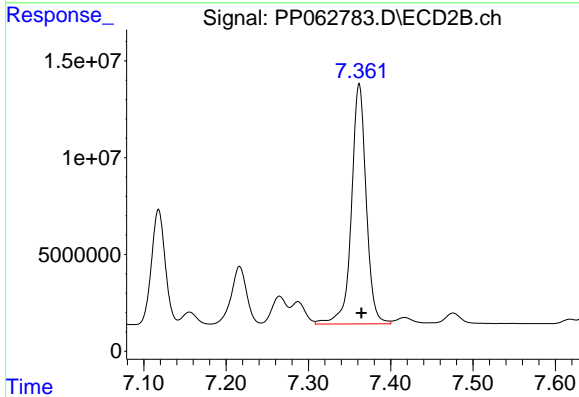
R.T.: 7.118 min
 Delta R.T.: -0.003 min
 Response: 68539752
 Conc: 465.81 ng/ml



#35 AR-1260-5

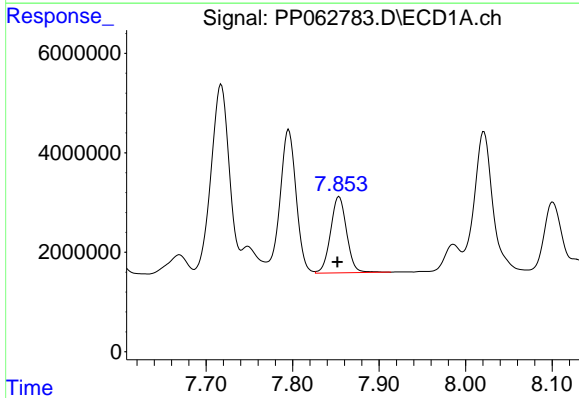
R.T.: 8.340 min
 Delta R.T.: 0.001 min
 Response: 76815613
 Conc: 430.97 ng/ml

Instrument :
 ECD_P
 ClientSampleId :



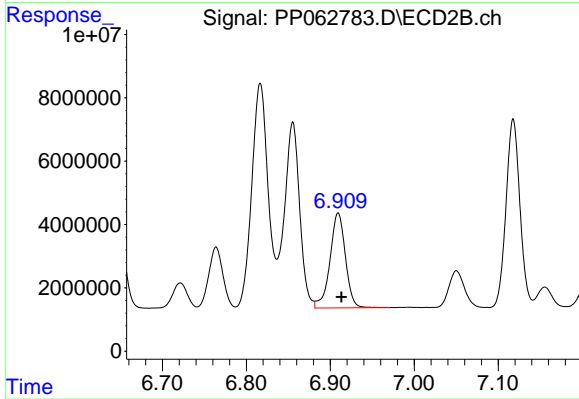
#35 AR-1260-5

R.T.: 7.362 min
 Delta R.T.: -0.003 min
 Response: 154395118
 Conc: 479.31 ng/ml



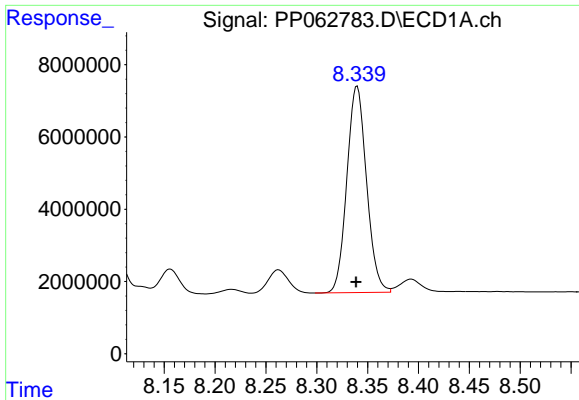
#36 AR-1262-1

R.T.: 7.854 min
 Delta R.T.: 0.002 min
 Response: 19727620
 Conc: 362.67 ng/ml



#36 AR-1262-1

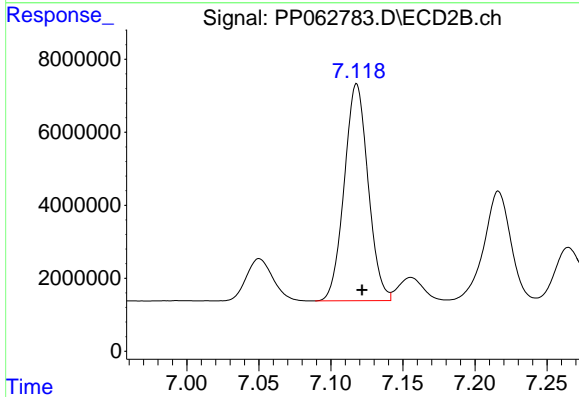
R.T.: 6.909 min
 Delta R.T.: -0.004 min
 Response: 38326435
 Conc: 431.39 ng/ml



#37 AR-1262-2

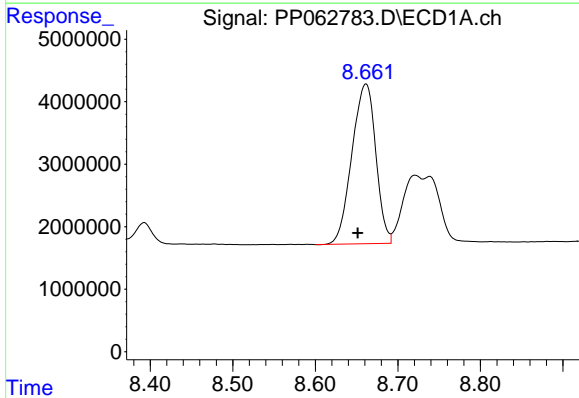
R.T.: 8.340 min
 Delta R.T.: 0.000 min
 Response: 76815613
 Conc: 378.79 ng/ml

Instrument :
 ECD_P
 ClientSampleId :



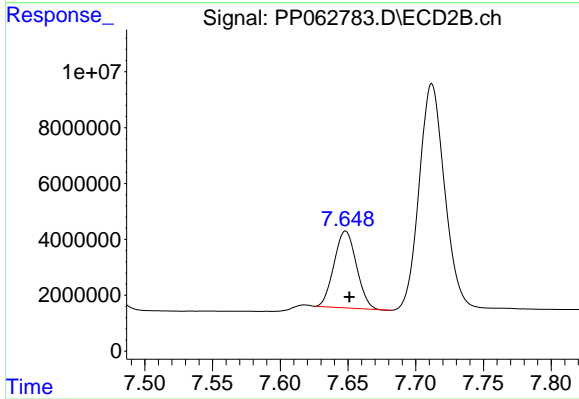
#37 AR-1262-2

R.T.: 7.118 min
 Delta R.T.: -0.004 min
 Response: 68539752
 Conc: 366.86 ng/ml



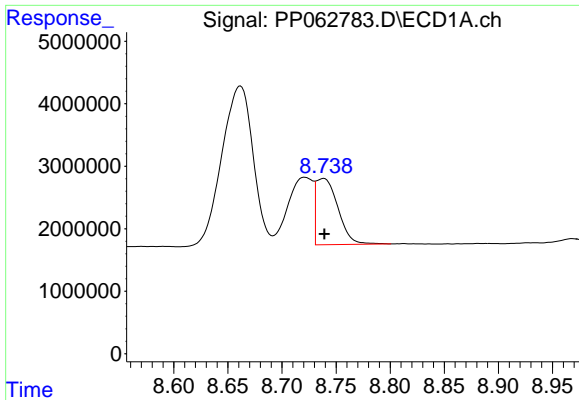
#38 AR-1262-3

R.T.: 8.662 min
 Delta R.T.: 0.010 min
 Response: 51367117
 Conc: 381.82 ng/ml



#38 AR-1262-3

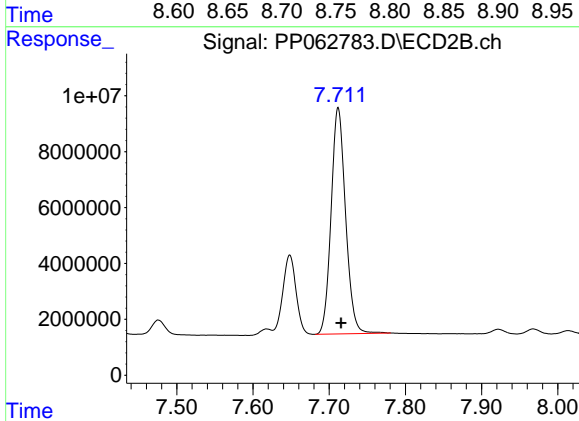
R.T.: 7.648 min
 Delta R.T.: -0.003 min
 Response: 31654504
 Conc: 290.22 ng/ml



#39 AR-1262-4

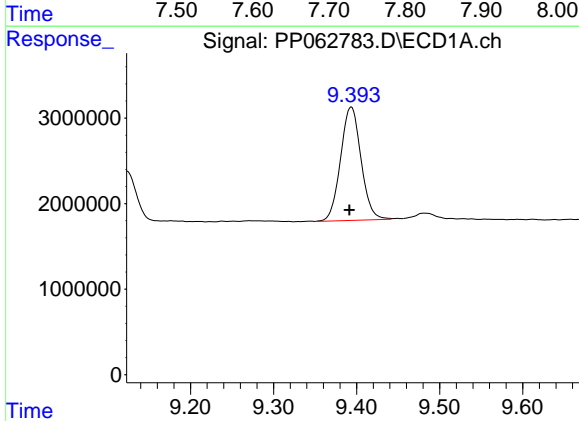
R.T.: 8.739 min
 Delta R.T.: 0.000 min
 Response: 15021285
 Conc: 147.64 ng/ml

Instrument :
 ECD_P
 ClientSampleId :



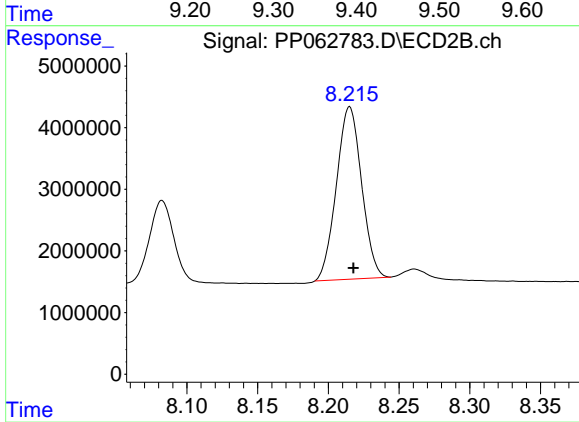
#39 AR-1262-4

R.T.: 7.712 min
 Delta R.T.: -0.004 min
 Response: 106700368
 Conc: 416.01 ng/ml



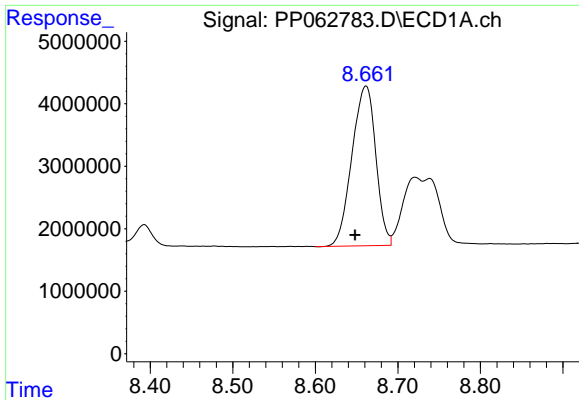
#40 AR-1262-5

R.T.: 9.394 min
 Delta R.T.: 0.002 min
 Response: 22724621
 Conc: 351.26 ng/ml



#40 AR-1262-5

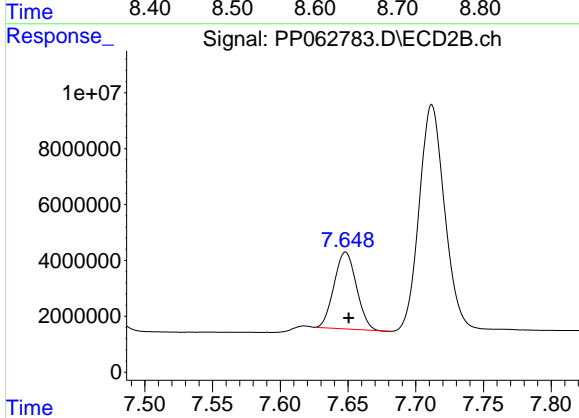
R.T.: 8.215 min
 Delta R.T.: -0.003 min
 Response: 34708865
 Conc: 304.63 ng/ml



#41 AR-1268-1

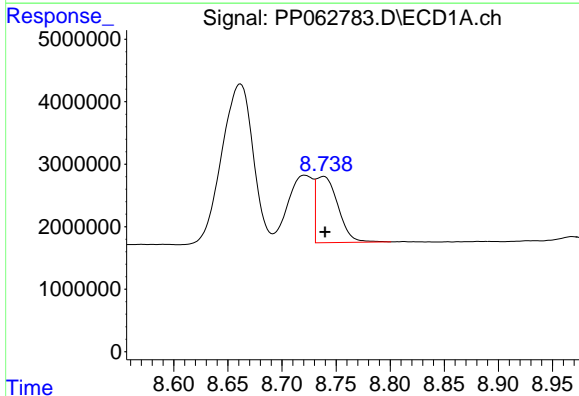
R.T.: 8.662 min
 Delta R.T.: 0.014 min
 Response: 51367117
 Conc: 227.38 ng/ml

Instrument :
 ECD_P
 ClientSampleId :



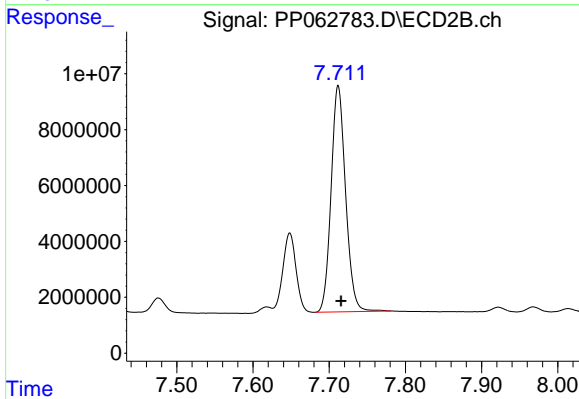
#41 AR-1268-1

R.T.: 7.648 min
 Delta R.T.: -0.002 min
 Response: 31654504
 Conc: 82.14 ng/ml



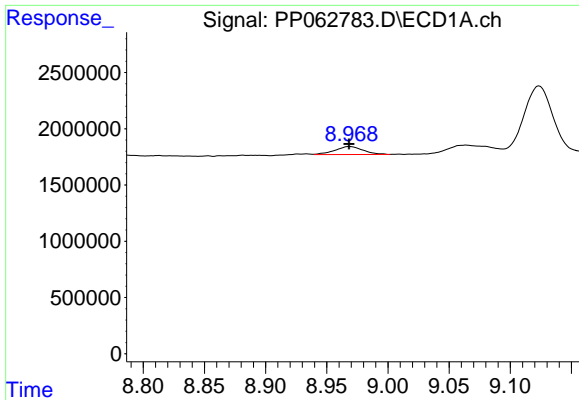
#42 AR-1268-2

R.T.: 8.739 min
 Delta R.T.: 0.000 min
 Response: 15021285
 Conc: 74.37 ng/ml



#42 AR-1268-2

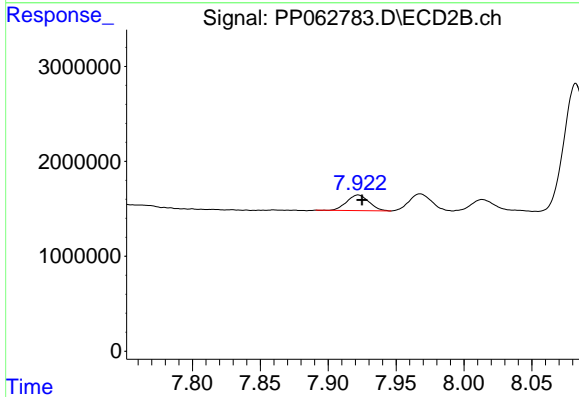
R.T.: 7.712 min
 Delta R.T.: -0.004 min
 Response: 106700368
 Conc: 301.51 ng/ml



#43 AR-1268-3

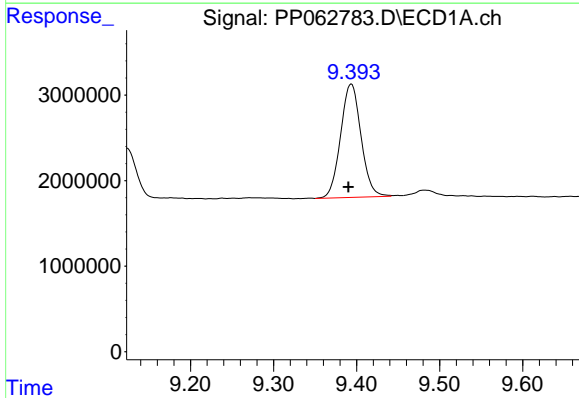
R.T.: 8.969 min
 Delta R.T.: 0.000 min
 Response: 1145242
 Conc: 6.70 ng/ml

Instrument :
 ECD_P
 ClientSampleId :



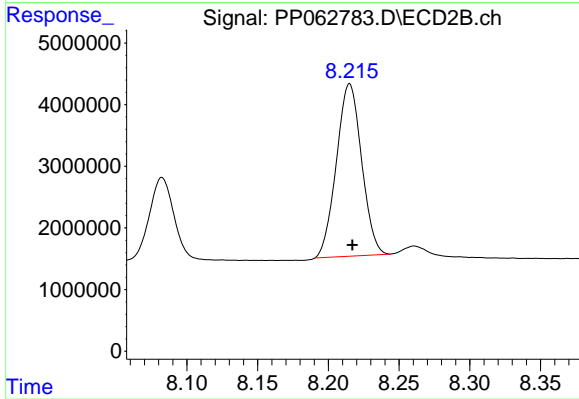
#43 AR-1268-3

R.T.: 7.922 min
 Delta R.T.: -0.003 min
 Response: 1886277
 Conc: 6.02 ng/ml



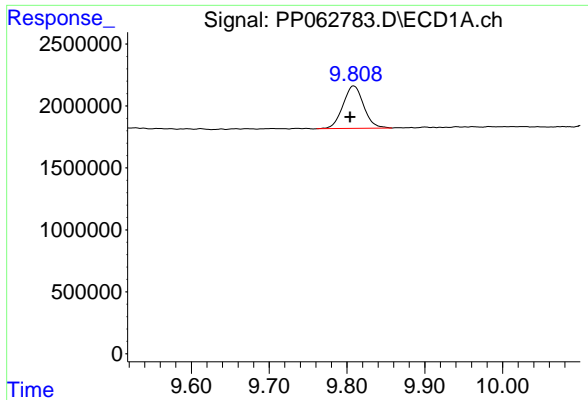
#44 AR-1268-4

R.T.: 9.394 min
 Delta R.T.: 0.003 min
 Response: 22724621
 Conc: 335.69 ng/ml



#44 AR-1268-4

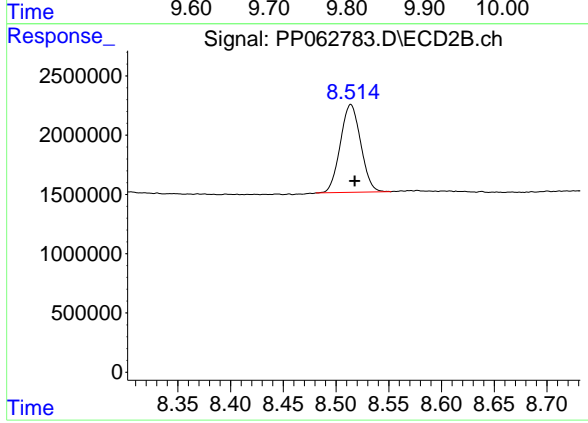
R.T.: 8.215 min
 Delta R.T.: -0.002 min
 Response: 34708865
 Conc: 277.92 ng/ml



#45 AR-1268-5

R.T.: 9.809 min
Delta R.T.: 0.004 min
Response: 6327164
Conc: 12.43 ng/ml

Instrument :
ECD_P
ClientSampleId :



#45 AR-1268-5

R.T.: 8.514 min
Delta R.T.: -0.004 min
Response: 9974336
Conc: 11.37 ng/ml