

Data Path : Z:\pestpcbsrv\HPCHEM1\ECD_P\Data\PP010825\
 Data File : PP069017.D
 Signal(s) : Signal #1: ECD1A.ch Signal #2: ECD2B.ch
 Acq On : 08 Jan 2025 17:30
 Operator : YP\AJ
 Sample : I.BLK
 Misc :
 ALS Vial : 2 Sample Multiplier: 1

Instrument :
 ECD_P
 ClientSampleId :
 I.BLK

Integration File signal 1: autoint1.e
 Integration File signal 2: autoint2.e
 Quant Time: Jan 09 00:15:19 2025
 Quant Method : Z:\pestpcbsrv\HPCHEM1\ECD_P\methods\PP010625.M
 Quant Title : GC EXTRACTABLES
 QLast Update : Tue Jan 07 11:05:55 2025
 Response via : Initial Calibration
 Integrator: ChemStation

Volume Inj. : 2 µl
 Signal #1 Phase : ZB-MR1 Signal #2 Phase: ZB-MR2
 Signal #1 Info : 30Mx0.32mmx 0.50µ Signal #2 Info : 30M x 0.32mm x 0.25µm

Compound	RT#1	RT#2	Resp#1	Resp#2	ng/ml	ng/ml

System Monitoring Compounds						
1) SA Tetrachlo...	4.669	3.981	30525854	20744974	21.941	21.251
2) SA Decachlor...	10.517	9.107	23951390	25846841	21.453	21.516

Target Compounds

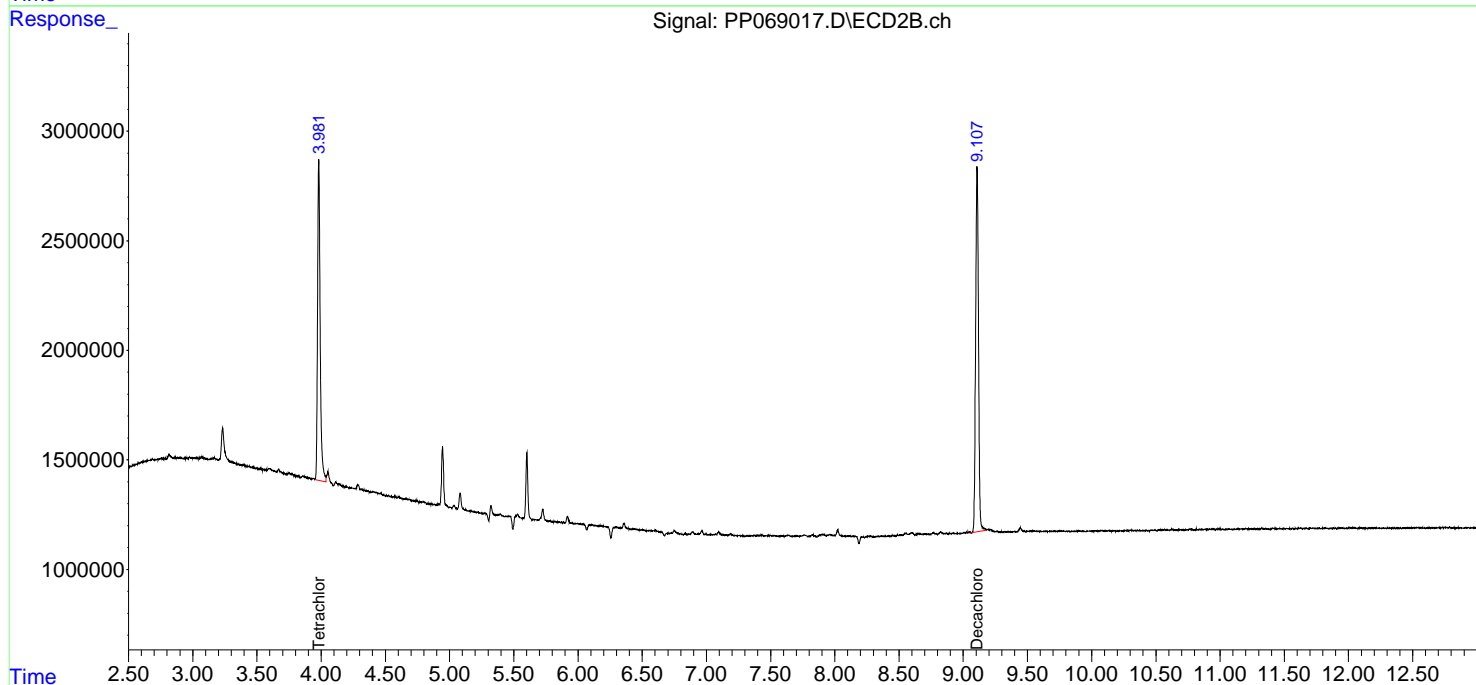
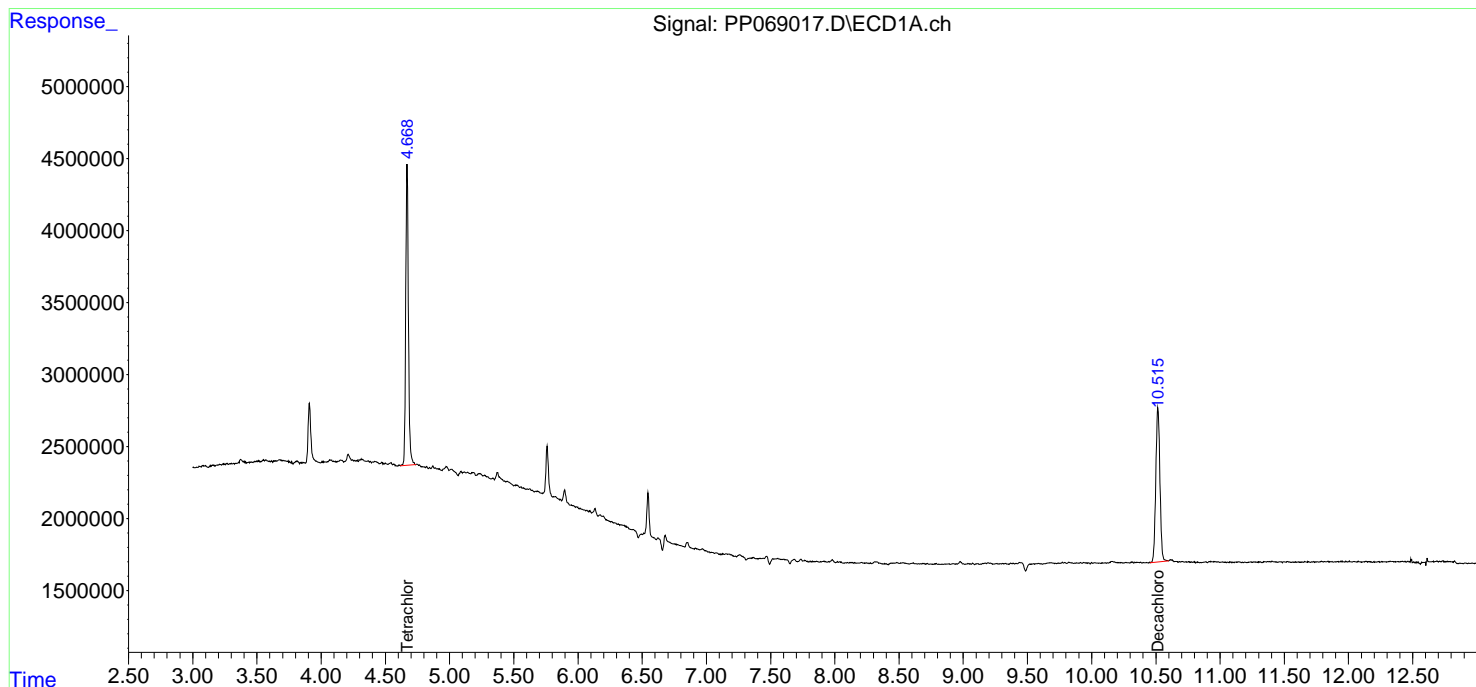
(f)=RT Delta > 1/2 Window (#)=Amounts differ by > 25% (m)=manual int.

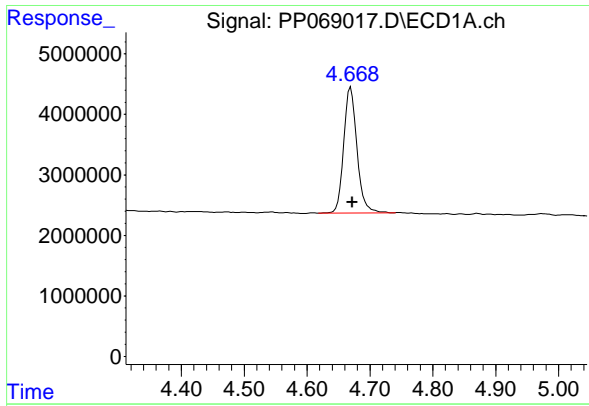
Data Path : Z:\pestpcbsrv\HPCHEM1\ECD_P\Data\PP010825\
 Data File : PP069017.D
 Signal(s) : Signal #1: ECD1A.ch Signal #2: ECD2B.ch
 Acq On : 08 Jan 2025 17:30
 Operator : YP\AJ
 Sample : I.BLK
 Misc :
 ALS Vial : 2 Sample Multiplier: 1

Instrument :
 ECD_P
 ClientSampleId :
 I.BLK

Integration File signal 1: autoint1.e
 Integration File signal 2: autoint2.e
 Quant Time: Jan 09 00:15:19 2025
 Quant Method : Z:\pestpcbsrv\HPCHEM1\ECD_P\methods\PP010625.M
 Quant Title : GC EXTRACTABLES
 QLast Update : Tue Jan 07 11:05:55 2025
 Response via : Initial Calibration
 Integrator: ChemStation

Volume Inj. : 2 µl
 Signal #1 Phase : ZB-MR1 Signal #2 Phase: ZB-MR2
 Signal #1 Info : 30Mx0.32mmx 0.50µm Signal #2 Info : 30M x 0.32mm x 0.25µm

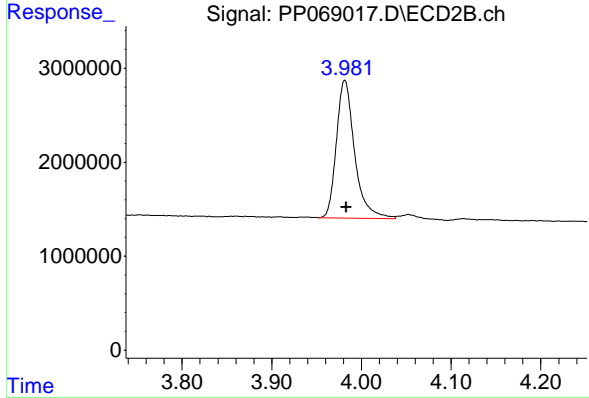




#1 Tetrachloro-m-xylene

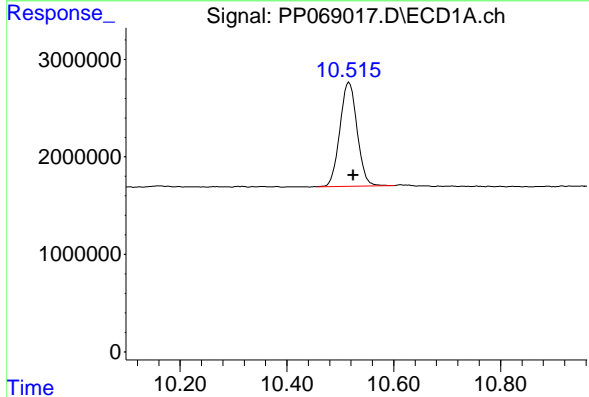
R.T.: 4.669 min
 Delta R.T.: -0.003 min
 Response: 30525854
 Conc: 21.94 ng/ml

Instrument :
 ECD_P
 ClientSampleId :
 I.BLK



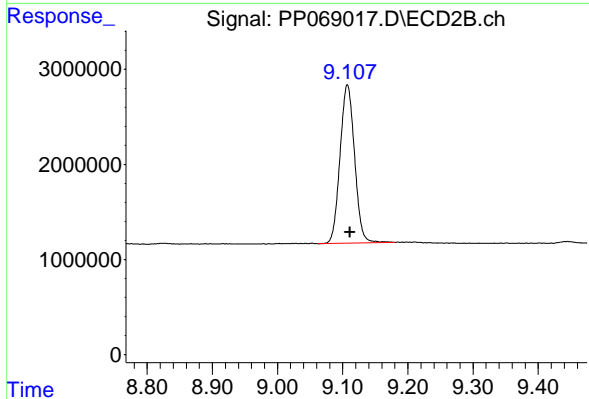
#1 Tetrachloro-m-xylene

R.T.: 3.981 min
 Delta R.T.: -0.002 min
 Response: 20744974
 Conc: 21.25 ng/ml



#2 Decachlorobiphenyl

R.T.: 10.517 min
 Delta R.T.: -0.008 min
 Response: 23951390
 Conc: 21.45 ng/ml



#2 Decachlorobiphenyl

R.T.: 9.107 min
 Delta R.T.: -0.004 min
 Response: 25846841
 Conc: 21.52 ng/ml