

Data Path : Z:\pestpcbsrv\HPCHEM1\ECD_P\Data\PP011019\
 Data File : PP028732.D
 Signal(s) : Signal #1: ECD1A.CH Signal #2: ECD2B.CH
 Acq On : 10 Jan 2019 12:18
 Operator : EI\MA
 Sample : PB116264BL
 Misc : hexane
 ALS Vial : 4 Sample Multiplier: 1

Instrument :
 ECD_P
 ClientSampleId :

Integration File signal 1: autoint1.e
 Integration File signal 2: autoint2.e
 Quant Time: Jan 10 23:34:47 2019
 Quant Method : Z:\pestpcbsrv\HPCHEM1\ECD_P\methods\PP010319.M
 Quant Title : 8080.M
 QLast Update : Fri Jan 04 01:40:06 2019
 Response via : Initial Calibration
 Integrator: ChemStation 6890 Scale Mode: Large solvent peaks clipped

Volume Inj. : 2 µl
 Signal #1 Phase : ZB-CLPesticides-1 Signal #2 Phase: ZB-CLPesticides-2
 Signal #1 Info : 30M x 0.32mm x0.5 Signal #2 Info : 30M x 0.32mm x 0.25µm

Compound	RT#1	RT#2	Resp#1	Resp#2	ng/ml	ng/ml

System Monitoring Compounds						
4) S 2,4-DCAA	12.140	12.245	113.9E6	186.8E6	442.871	427.943
Target Compounds						
1) T Dalapon	3.324	0.000	14596309	0	23.869	N.D. #
6) T MCPP	12.837	0.000	19434363	0	40.206	N.D. #
8) T DICHLORPROP	0.000	13.694	0	14730006	N.D.	33.920 #
13) T 2,4-DB	16.488	0.000	13515734	0	150.751	N.D. #

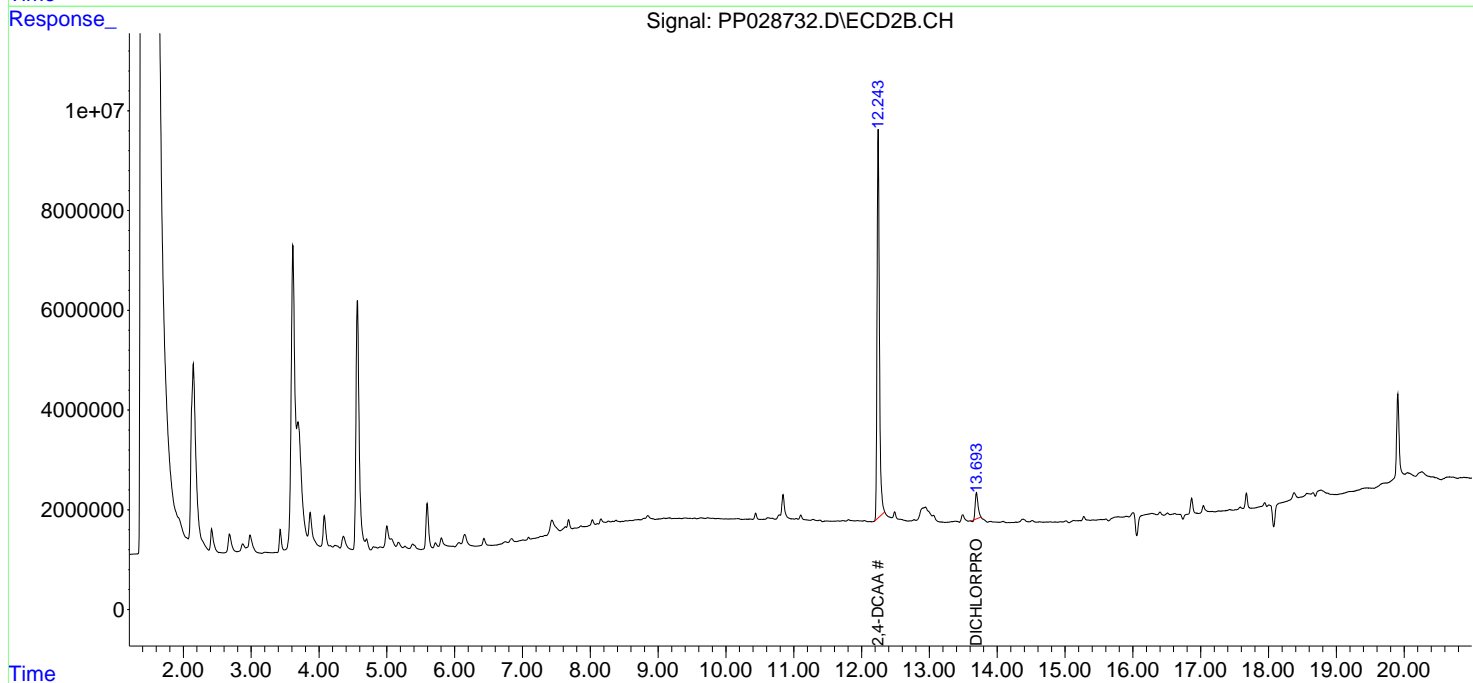
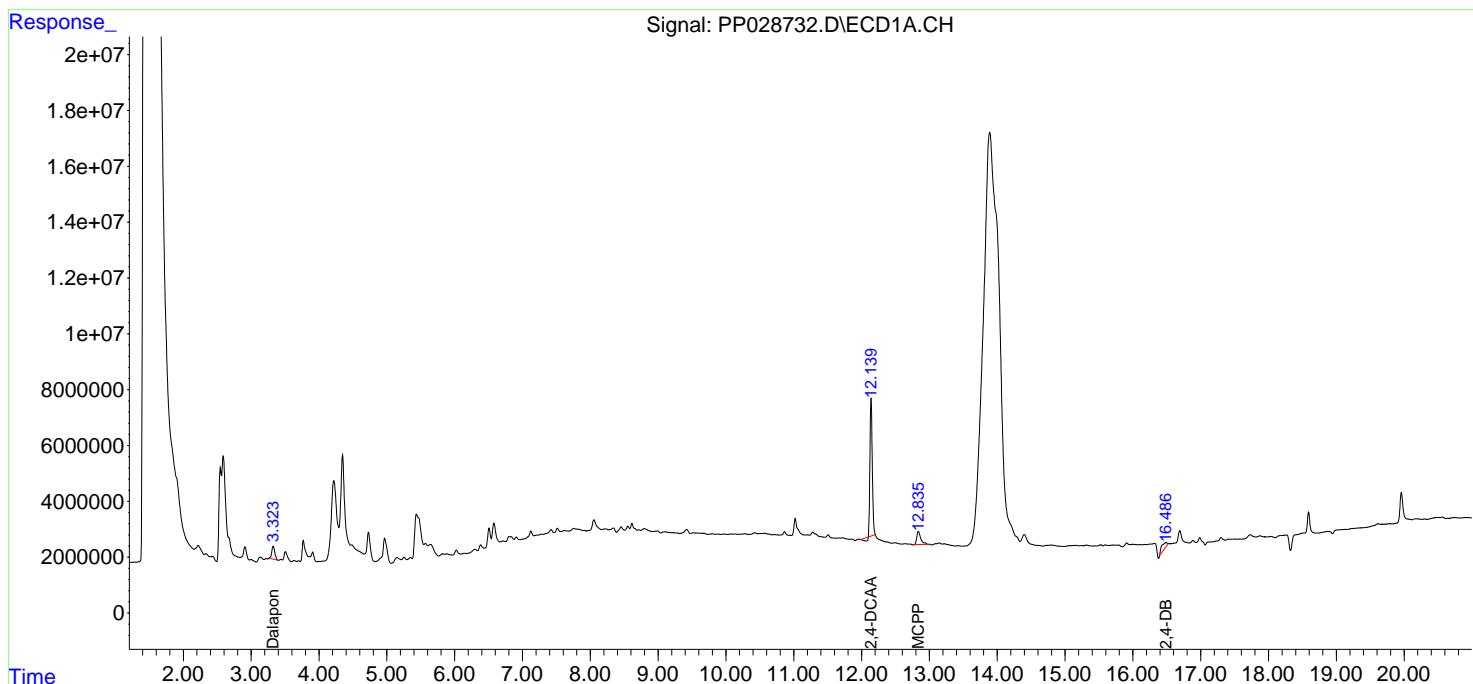
(f)=RT Delta > 1/2 Window (#)=Amounts differ by > 25% (m)=manual int.

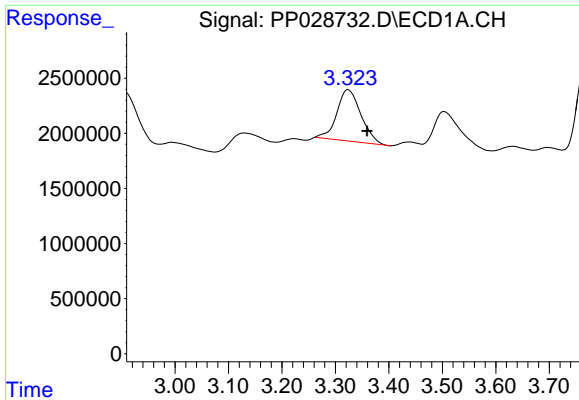
Data Path : Z:\pestpcbsrv\HPCHEM1\ECD_P\Data\PP011019\
 Data File : PP028732.D
 Signal(s) : Signal #1: ECD1A.CH Signal #2: ECD2B.CH
 Acq On : 10 Jan 2019 12:18
 Operator : EI\MA
 Sample : PB116264BL
 Misc : hexane
 ALS Vial : 4 Sample Multiplier: 1

Instrument :
 ECD_P
 ClientSampled :

Integration File signal 1: autoint1.e
 Integration File signal 2: autoint2.e
 Quant Time: Jan 10 23:34:47 2019
 Quant Method : Z:\pestpcbsrv\HPCHEM1\ECD_P\methods\PP010319.M
 Quant Title : 8080.M
 QLast Update : Fri Jan 04 01:40:06 2019
 Response via : Initial Calibration
 Integrator: ChemStation 6890 Scale Mode: Large solvent peaks clipped

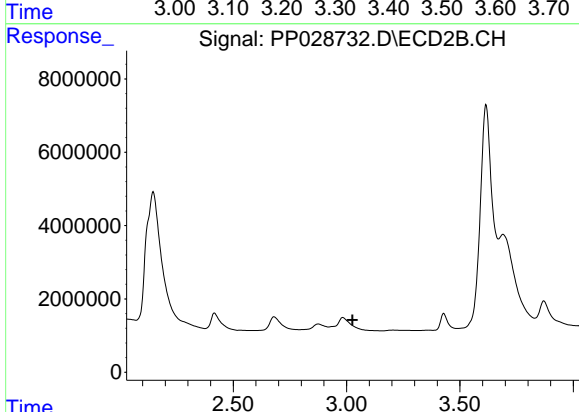
Volume Inj. : 2 µl
 Signal #1 Phase : ZB-CLPesticides-1 Signal #2 Phase: ZB-CLPesticides-2
 Signal #1 Info : 30M x 0.32mm x0.5 Signal #2 Info : 30M x 0.32mm x 0.25µm



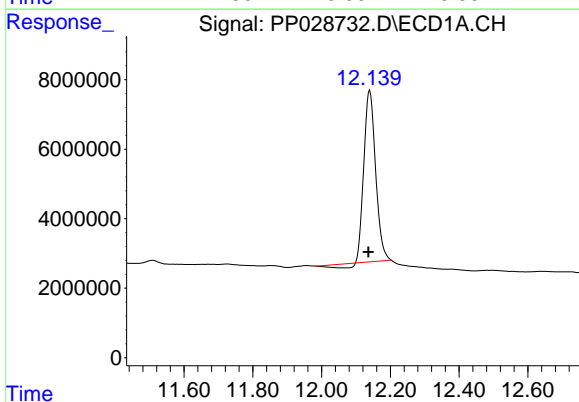


#1 Dalapon
 R.T.: 3.324 min
 Delta R.T.: -0.035 min
 Response: 14596309
 Conc: 23.87 ng/ml

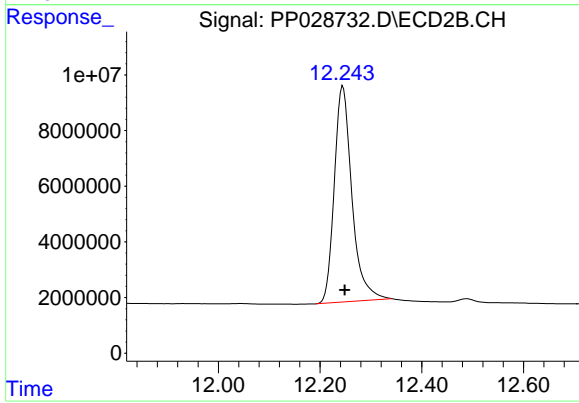
Instrument :
 ECD_P
 ClientSampleId :



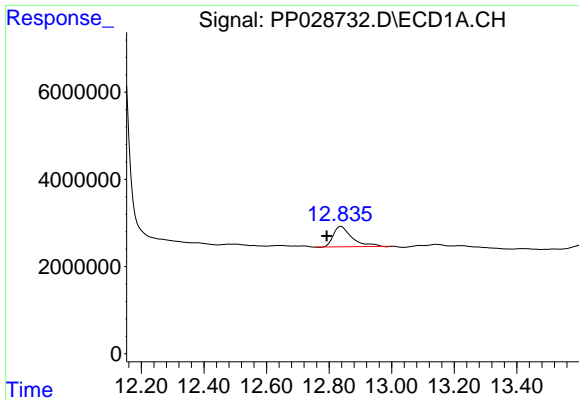
#1 Dalapon
 R.T.: 0.000 min
 Exp R.T. : 3.027 min
 Response: 0
 Conc: N.D.



#4 2,4-DCAA
 R.T.: 12.140 min
 Delta R.T.: 0.004 min
 Response: 113864327
 Conc: 442.87 ng/ml

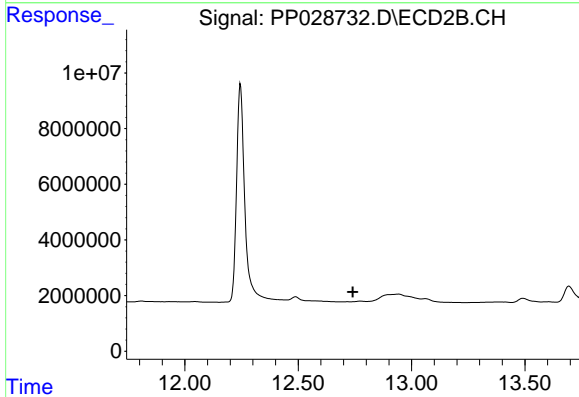


#4 2,4-DCAA
 R.T.: 12.245 min
 Delta R.T.: -0.004 min
 Response: 186831997
 Conc: 427.94 ng/ml

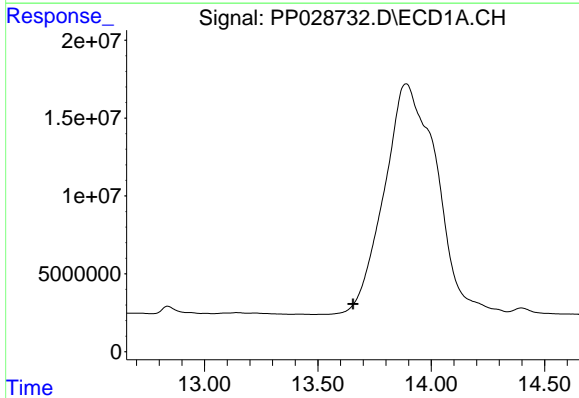


#6 MCPP
R.T.: 12.837 min
Delta R.T.: 0.045 min
Response: 19434363
Conc: 40.21 ug/ml

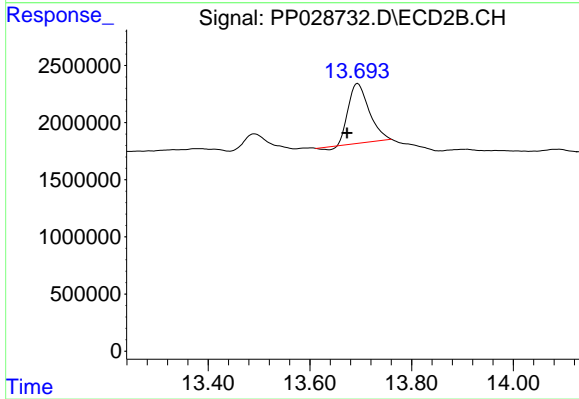
Instrument :
ECD_P
ClientSampled :



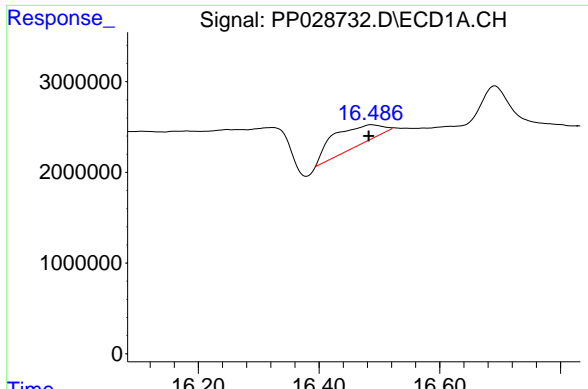
#6 MCPP
R.T.: 0.000 min
Exp R.T. : 12.741 min
Response: 0
Conc: N.D.



#8 DICHLORPROP
R.T.: 0.000 min
Exp R.T. : 13.655 min
Response: 0
Conc: N.D.



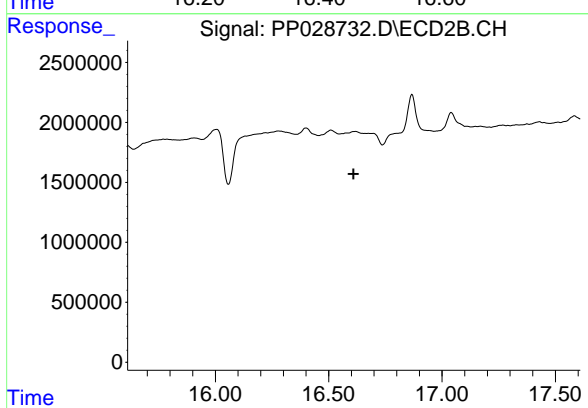
#8 DICHLORPROP
R.T.: 13.694 min
Delta R.T.: 0.021 min
Response: 14730006
Conc: 33.92 ng/ml



#13 2,4-DB

R.T.: 16.488 min
Delta R.T.: 0.006 min
Response: 13515734
Conc: 150.75 ng/ml

Instrument :
ECD_P
ClientSampleId :



#13 2,4-DB

R.T.: 0.000 min
Exp R.T. : 16.610 min
Response: 0
Conc: N.D.