

Data Path : Z:\pestpcbsrv\HPCHEM1\ECD_P\Data\PP011019\
 Data File : PP028743.D
 Signal(s) : Signal #1: ECD1A.CH Signal #2: ECD2B.CH
 Acq On : 10 Jan 2019 17:14
 Operator : EI\MA
 Sample : K1006-12
 Misc : hexane
 ALS Vial : 15 Sample Multiplier: 1

Instrument :
 ECD_P
 ClientSampleId :

Integration File signal 1: autoint1.e
 Integration File signal 2: autoint2.e
 Quant Time: Jan 10 23:37:31 2019
 Quant Method : Z:\pestpcbsrv\HPCHEM1\ECD_P\methods\PP010319.M
 Quant Title : 8080.M
 QLast Update : Fri Jan 04 01:40:06 2019
 Response via : Initial Calibration
 Integrator: ChemStation 6890 Scale Mode: Large solvent peaks clipped

Volume Inj. : 2 µl
 Signal #1 Phase : ZB-CLPesticides-1 Signal #2 Phase: ZB-CLPesticides-2
 Signal #1 Info : 30M x 0.32mm x0.5 Signal #2 Info : 30M x 0.32mm x 0.25µm

	Compound	RT#1	RT#2	Resp#1	Resp#2	ng/ml	ng/ml

System Monitoring Compounds							
4) S	2,4-DCAA	12.137	12.247	105.9E6	156.6E6	411.748	358.657
Target Compounds							
1) T	Dalapon	3.321	2.994	25317623	26021732	41.401	44.513
2) T	3,5-DICHL...	10.615	0.000	50178450	0	100.411	N.D. #
6) T	MCPD	12.827	0.000	16064521	0	33.947	N.D. #
8) T	DICHLORPROP	0.000	13.688	0	12752274	N.D.	29.366 #
13) T	2,4-DB	16.485	0.000	6148385	0	114.803	N.D. #

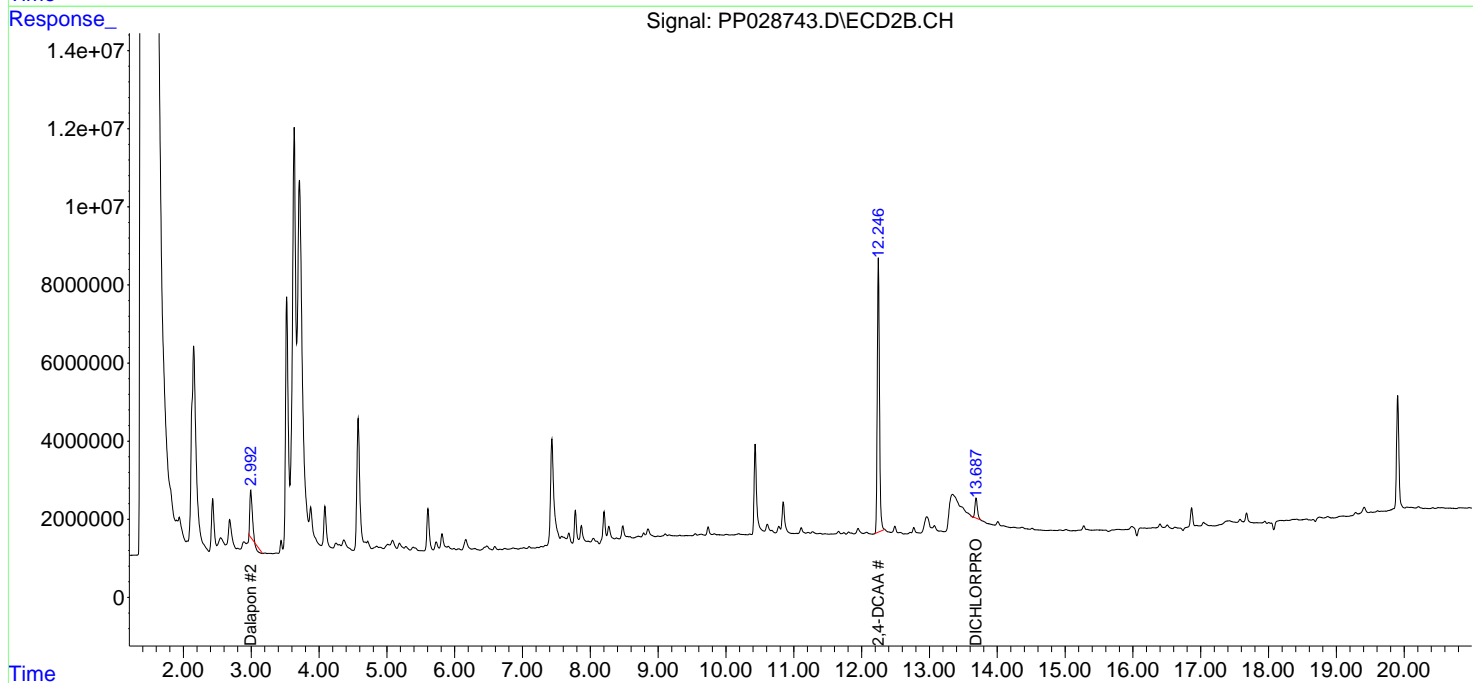
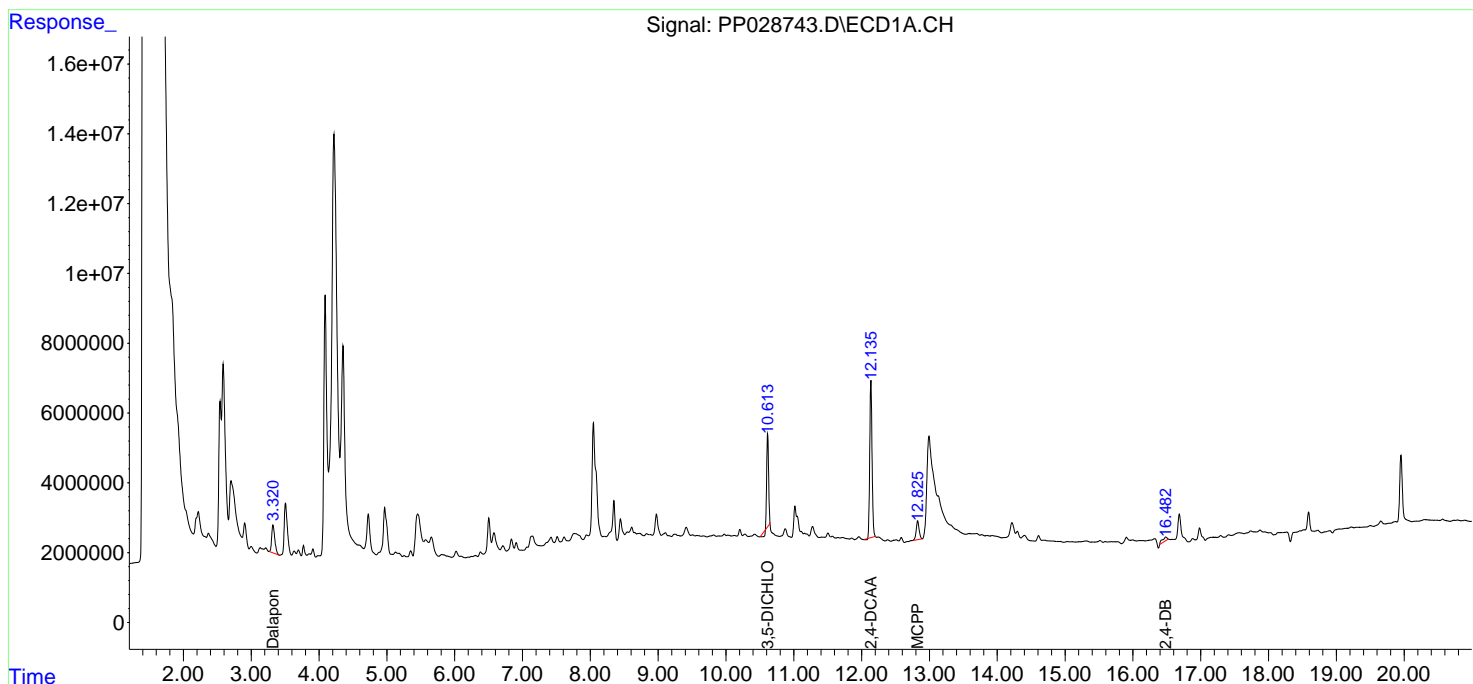
(f)=RT Delta > 1/2 Window (#)=Amounts differ by > 25% (m)=manual int.

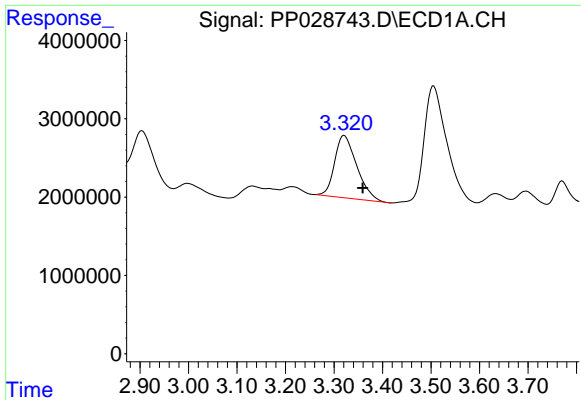
Data Path : Z:\pestpcbsrv\HPCHEM1\ECD_P\Data\PP011019\
 Data File : PP028743.D
 Signal(s) : Signal #1: ECD1A.CH Signal #2: ECD2B.CH
 Acq On : 10 Jan 2019 17:14
 Operator : EI\MA
 Sample : K1006-12
 Misc : hexane
 ALS Vial : 15 Sample Multiplier: 1

Instrument :
 ECD_P
 ClientSampled :

Integration File signal 1: autoint1.e
 Integration File signal 2: autoint2.e
 Quant Time: Jan 10 23:37:31 2019
 Quant Method : Z:\pestpcbsrv\HPCHEM1\ECD_P\methods\PP010319.M
 Quant Title : 8080.M
 QLast Update : Fri Jan 04 01:40:06 2019
 Response via : Initial Calibration
 Integrator: ChemStation 6890 Scale Mode: Large solvent peaks clipped

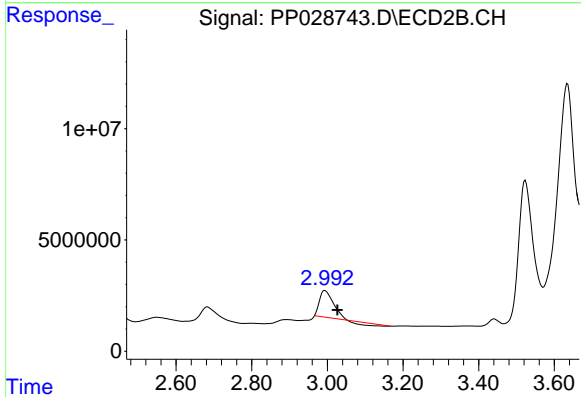
Volume Inj. : 2 µl
 Signal #1 Phase : ZB-CLPesticides-1 Signal #2 Phase: ZB-CLPesticides-2
 Signal #1 Info : 30M x 0.32mm x0.5 Signal #2 Info : 30M x 0.32mm x 0.25µm



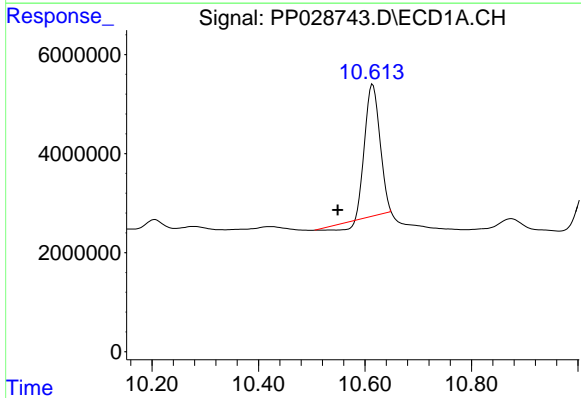


#1 Dalapon
 R.T.: 3.321 min
 Delta R.T.: -0.038 min
 Response: 25317623
 Conc: 41.40 ng/ml

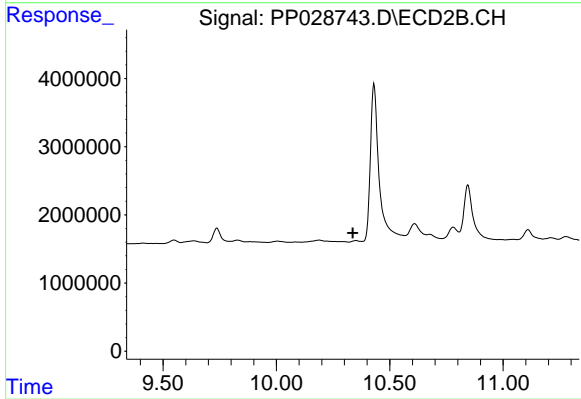
Instrument :
 ECD_P
 ClientSampleId :



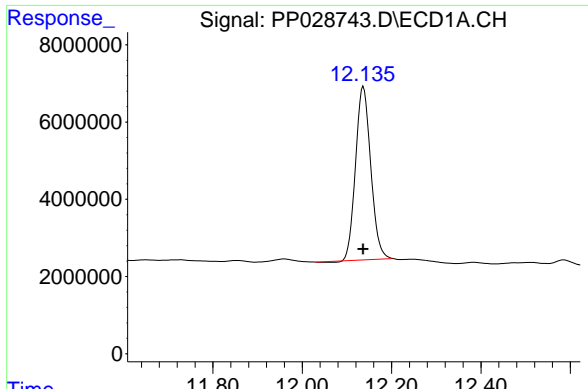
#1 Dalapon
 R.T.: 2.994 min
 Delta R.T.: -0.033 min
 Response: 26021732
 Conc: 44.51 ng/ml



#2 3,5-DICHLOROBENZOIC ACID
 R.T.: 10.615 min
 Delta R.T.: 0.066 min
 Response: 50178450
 Conc: 100.41 ng/ml

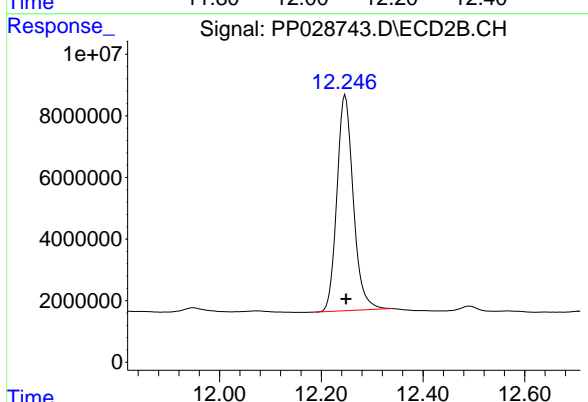


#2 3,5-DICHLOROBENZOIC ACID
 R.T.: 0.000 min
 Exp R.T. : 10.337 min
 Response: 0
 Conc: N.D.

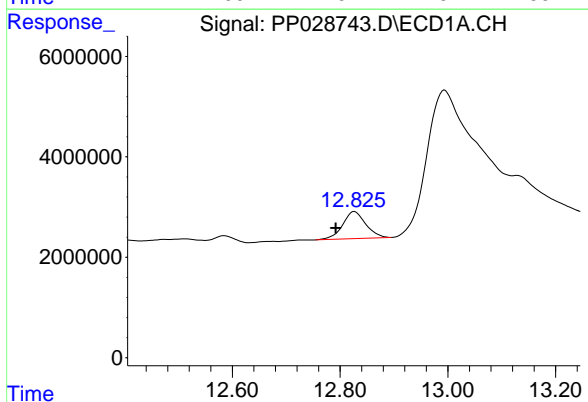


#4 2,4-DCAA
 R.T.: 12.137 min
 Delta R.T.: 0.000 min
 Response: 105862447
 Conc: 411.75 ng/ml

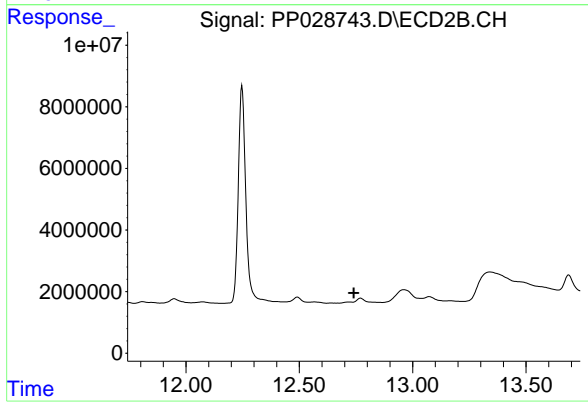
Instrument :
 ECD_P
 ClientSampled :



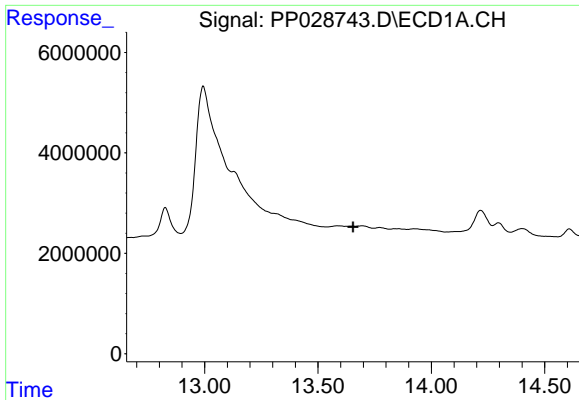
#4 2,4-DCAA
 R.T.: 12.247 min
 Delta R.T.: -0.001 min
 Response: 156582811
 Conc: 358.66 ng/ml



#6 MCPP
 R.T.: 12.827 min
 Delta R.T.: 0.035 min
 Response: 16064521
 Conc: 33.95 ug/ml



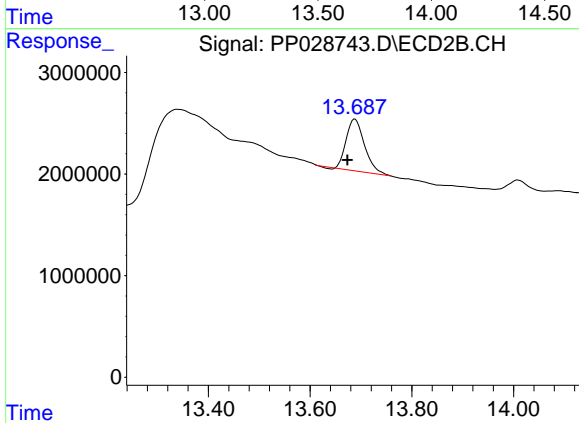
#6 MCPP
 R.T.: 0.000 min
 Exp R.T. : 12.741 min
 Response: 0
 Conc: N.D.



#8 DICHLORPROP

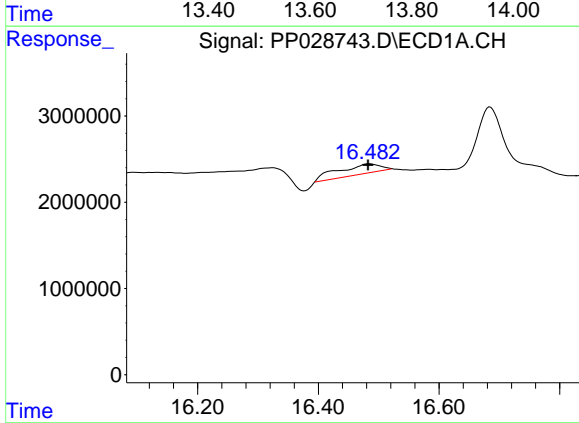
R.T.: 0.000 min
 Exp R.T.: 13.655 min
 Response: 0
 Conc: N.D.

Instrument :
 ECD_P
 ClientSampleId :



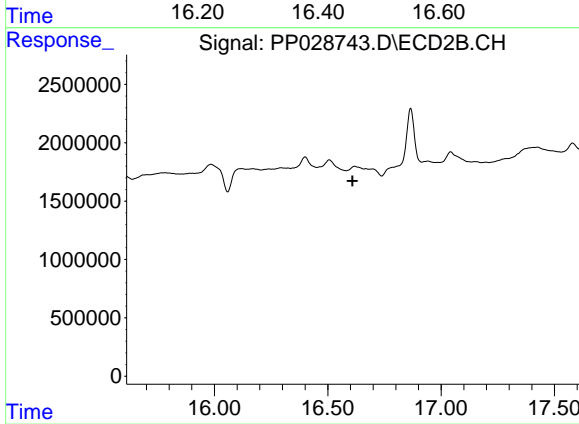
#8 DICHLORPROP

R.T.: 13.688 min
 Delta R.T.: 0.015 min
 Response: 12752274
 Conc: 29.37 ng/ml



#13 2,4-DB

R.T.: 16.485 min
 Delta R.T.: 0.003 min
 Response: 6148385
 Conc: 114.80 ng/ml



#13 2,4-DB

R.T.: 0.000 min
 Exp R.T.: 16.610 min
 Response: 0
 Conc: N.D.