

Data Path : Z:\pestpcbsrv\HPCHEM1\ECD_P\Data\PP011023\
 Data File : PP054375.D
 Signal(s) : Signal #1: ECD1A.ch Signal #2: ECD2B.ch
 Acq On : 10 Jan 2023 09:37
 Operator : YP\AJ
 Sample : AR1248CCC500
 Misc :
 ALS Vial : 5 Sample Multiplier: 1

Instrument :
 ECD_P
 ClientSampleId :

Integration File signal 1: autoint1.e
 Integration File signal 2: autoint2.e
 Quant Time: Jan 11 02:14:41 2023
 Quant Method : Z:\pestpcbsrv\HPCHEM1\ECD_P\methods\PP010423.M
 Quant Title : GC EXTRACTABLES
 QLast Update : Thu Jan 05 03:46:53 2023
 Response via : Initial Calibration
 Integrator: ChemStation

Volume Inj. : 2 µl
 Signal #1 Phase : ZB-MR1 Signal #2 Phase: ZB-MR2
 Signal #1 Info : 30Mx0.32mmx 0.50µ Signal #2 Info : 30M x 0.32mm x 0.25µm

Compound	RT#1	RT#2	Resp#1	Resp#2	ng/ml	ng/ml
System Monitoring Compounds						
1) SA Tetrachlo...	4.336	3.585	111.2E6	81241258	54.928	50.367
2) SA Decachlor...	10.097	8.607	65822085	75279371	45.831	53.365
Target Compounds						
3) L1 AR-1016-1	5.507	4.671	22036614	15691562	298.208	301.573
4) L1 AR-1016-2	5.530	4.690	26692550	16760922	250.120	234.017
5) L1 AR-1016-3	5.592	4.867	14061980	10840973	205.545	276.359 #
6) L1 AR-1016-4	5.690	4.908	13063054	21868774	250.901	635.464 #
7) L1 AR-1016-5	5.987	5.122	26313198	27084930	581.164	616.024
8) L2 AR-1221-1	4.541	3.798	697693	444146	29.017	23.244
9) L2 AR-1221-2	4.641	3.884	2201517	1590376	124.260	107.860
10) L2 AR-1221-3	4.708	3.960	3567052	2610434	66.181	58.773
11) L3 AR-1232-1	4.708	3.960	3567052	2610434	79.300	70.138
12) L3 AR-1232-2	5.238	4.690	12703351	16760922	486.825	312.731 #
13) L3 AR-1232-3	5.530	4.867	26692550	10840973	580.281	652.968
14) L3 AR-1232-4	5.690	4.950	13063054	22814196	583.369	1359.991 #
15) L3 AR-1232-5	5.782	5.122	25491951	27084930	1432.451	1500.144
16) L4 AR-1242-1	5.507	4.671	22036614	15691562	371.129	371.684
17) L4 AR-1242-2	5.530	4.690	26692550	16760922	312.217	287.897
18) L4 AR-1242-3	5.592	4.867	14061980	10840973	257.367	338.982 #
19) L4 AR-1242-4	5.690	4.950	13063054	22814196	311.685	653.996 #
20) L4 AR-1242-5	6.431	5.475	25313358	34258673	771.175	910.549
21) L5 AR-1248-1	5.507	4.671	22036614	15691562	490.830	482.394
22) L5 AR-1248-2	5.782	4.908	25491951	21868774	401.209	442.831
23) L5 AR-1248-3	5.987	4.950	26313198	22814196	443.918	442.090
24) L5 AR-1248-4	6.392	5.122	26761689	27084930	461.983	458.943
25) L5 AR-1248-5	6.431	5.516	25313358	22812278	456.219	459.975
26) L6 AR-1254-1	6.365	5.475	21043333	34258673	338.671	399.491
27) L6 AR-1254-2	6.588	5.624	26955119	11451122	287.226	154.140 #
28) L6 AR-1254-3	6.953	6.029	14860691	16670862	156.550	143.625
29) L6 AR-1254-4	7.241	6.257	9362785	10358598	138.023	164.551
30) L6 AR-1254-5	7.661	6.677	2769115	3077444	36.427	32.185
31) L7 AR-1260-1	7.118	6.174	1857309	8025930	23.826	94.744 #
32) L7 AR-1260-2	7.376	6.348	2510257	1820006	28.026	19.030 #
33) L7 AR-1260-3	7.737	6.501	787677	2123315	11.527	23.230 #
34) L7 AR-1260-4	7.953	6.975	1815272	484164	22.785	6.387 #
35) L7 AR-1260-5	8.281	7.219	1095386	904070	7.638	5.707 #
36) L8 AR-1262-1	7.737	6.768	787677	192326	9.363	4.711 #
37) L8 AR-1262-2	8.281	6.975	1095386	484164	7.740	5.592 #
38) L8 AR-1262-3	8.603	7.504	429269	232864	4.145	3.488
39) L8 AR-1262-4	8.679	7.567	721740	719776	14.256	6.151 #
40) L8 AR-1262-5	9.340	8.061	643827	317624	11.461	5.766 #
41) L9 AR-1268-1	8.603	7.504	429269	232864	2.202	1.147 #

Data Path : Z:\pestpcbsrv\HPCHEM1\ECD_P\Data\PP011023\
 Data File : PP054375.D
 Signal(s) : Signal #1: ECD1A.ch Signal #2: ECD2B.ch
 Acq On : 10 Jan 2023 09:37
 Operator : YP\AJ
 Sample : AR1248CCC500
 Misc :
 ALS Vial : 5 Sample Multiplier: 1

Instrument :
 ECD_P
 ClientSampleId :

Integration File signal 1: autoint1.e
 Integration File signal 2: autoint2.e
 Quant Time: Jan 11 02:14:41 2023
 Quant Method : Z:\pestpcbsrv\HPCHEM1\ECD_P\methods\PP010423.M
 Quant Title : GC EXTRACTABLES
 QLast Update : Thu Jan 05 03:46:53 2023
 Response via : Initial Calibration
 Integrator: ChemStation

Volume Inj. : 2 µl
 Signal #1 Phase : ZB-MR1 Signal #2 Phase: ZB-MR2
 Signal #1 Info : 30Mx0.32mmx 0.50µ Signal #2 Info : 30M x 0.32mm x 0.25µm

	Compound	RT#1	RT#2	Resp#1	Resp#2	ng/ml	ng/ml
42)	L9 AR-1268-2	8.679	7.567	721740	719776	4.090	3.907
43)	L9 AR-1268-3	8.913	7.776	149106	178735	0.961	1.046
44)	L9 AR-1268-4	9.340	8.061	643827	317624	9.410	5.027 #
45)	L9 AR-1268-5	9.754	8.353	581473	674504	1.141	1.378

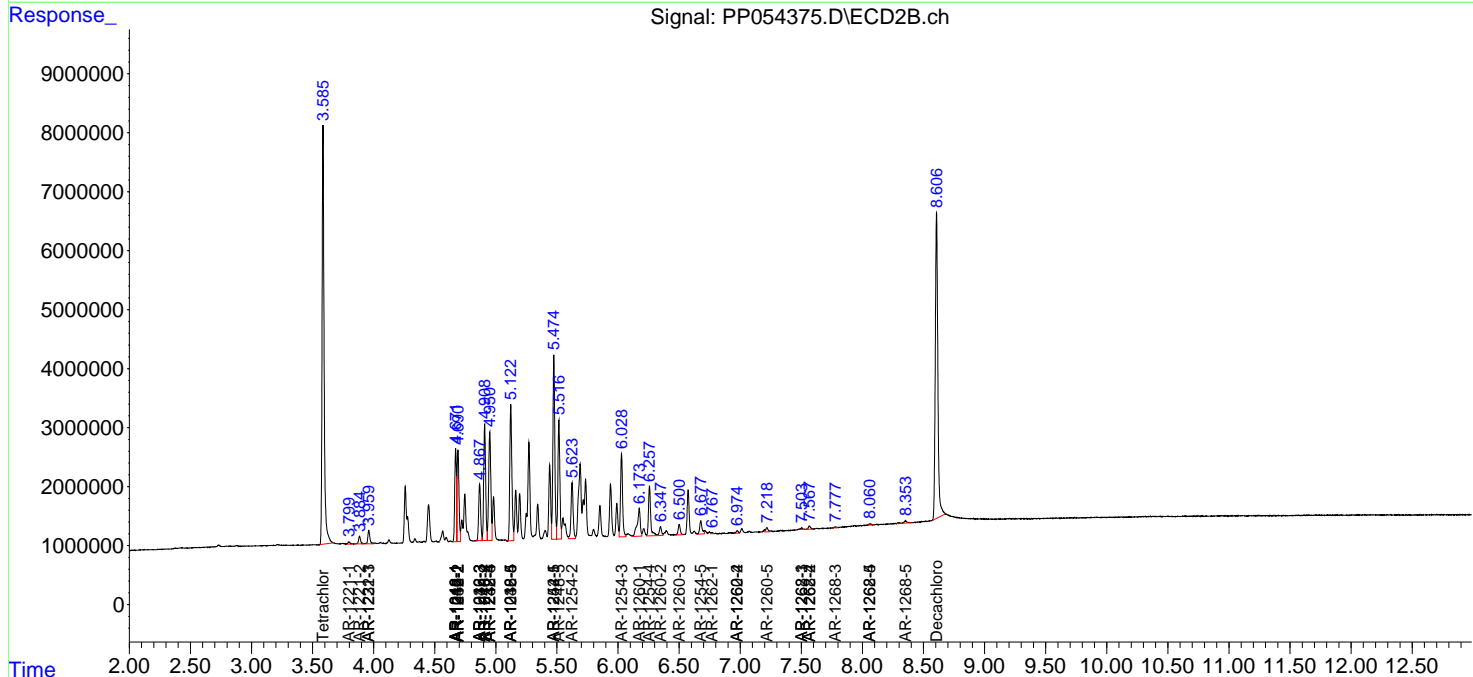
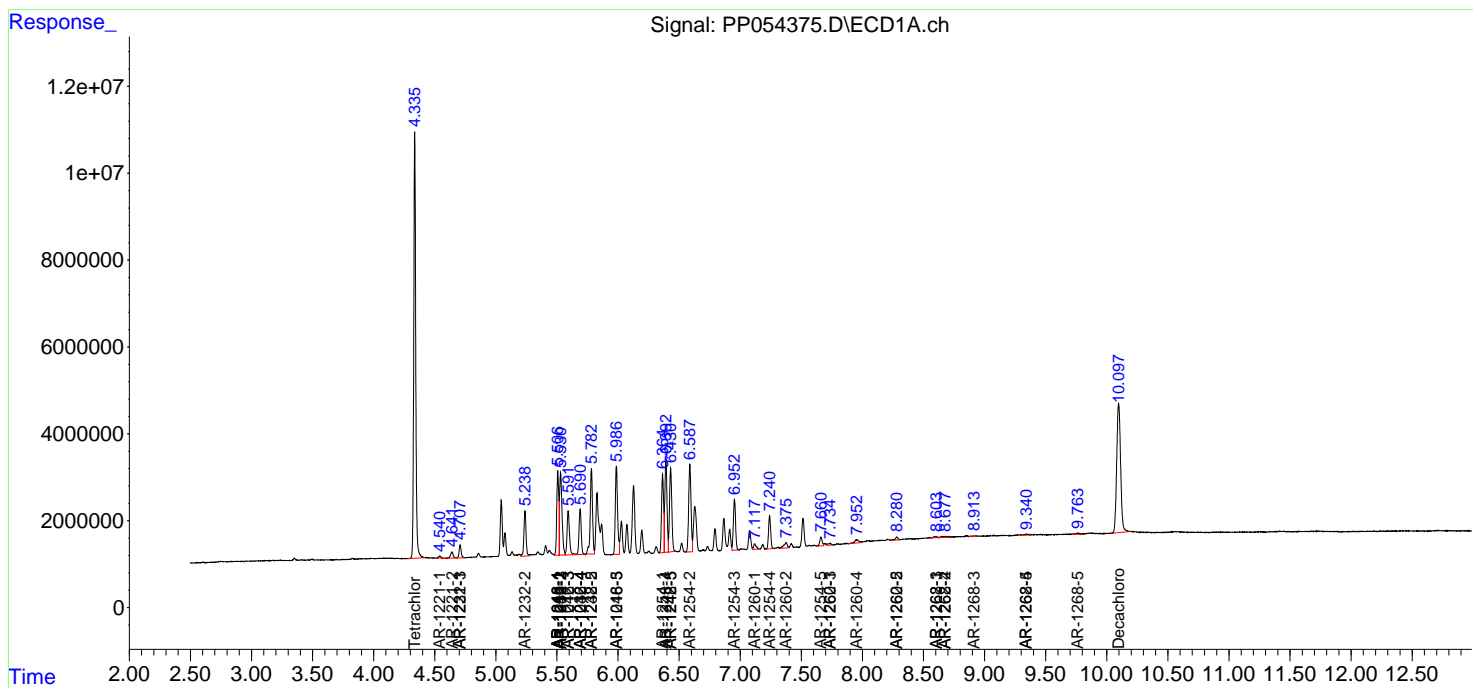
(f)=RT Delta > 1/2 Window (#)=Amounts differ by > 25% (m)=manual int.

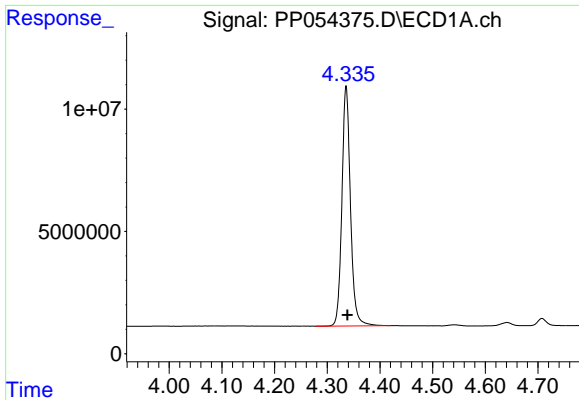
Data Path : Z:\pestpcbsrv\HPCHEM1\ECD_P\Data\PP011023\
 Data File : PP054375.D
 Signal(s) : Signal #1: ECD1A.ch Signal #2: ECD2B.ch
 Acq On : 10 Jan 2023 09:37
 Operator : YP\AJ
 Sample : AR1248CCC500
 Misc :
 ALS Vial : 5 Sample Multiplier: 1

Instrument :
 ECD_P
 ClientSampleId :

Integration File signal 1: autoint1.e
 Integration File signal 2: autoint2.e
 Quant Time: Jan 11 02:14:41 2023
 Quant Method : Z:\pestpcbsrv\HPCHEM1\ECD_P\methods\PP010423.M
 Quant Title : GC EXTRACTABLES
 QLast Update : Thu Jan 05 03:46:53 2023
 Response via : Initial Calibration
 Integrator: ChemStation

Volume Inj. : 2 µl
 Signal #1 Phase : ZB-MR1 Signal #2 Phase: ZB-MR2
 Signal #1 Info : 30Mx0.32mmx 0.50µ Signal #2 Info : 30M x 0.32mm x 0.25µm

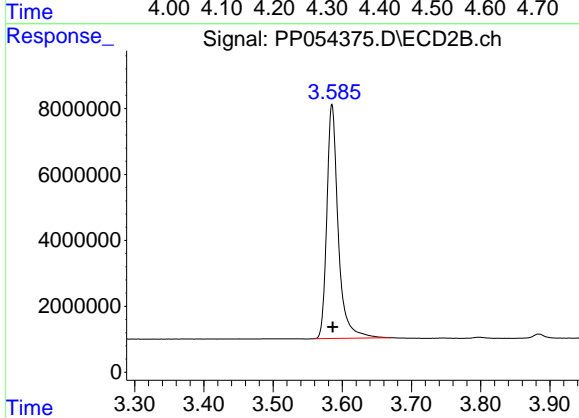




#1 Tetrachloro-m-xylene

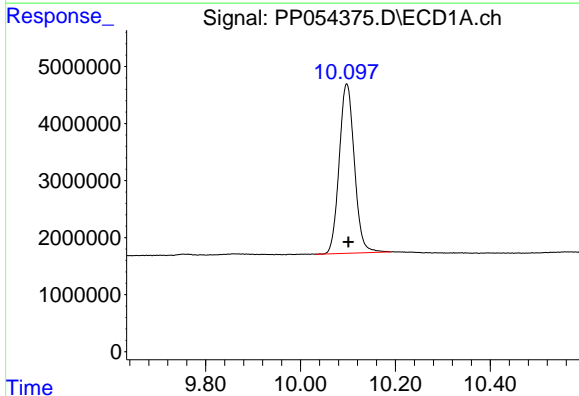
R.T.: 4.336 min
Delta R.T.: -0.002 min
Response: 111232891
Conc: 54.93 ng/ml

Instrument :
ECD_P
ClientSampleId :



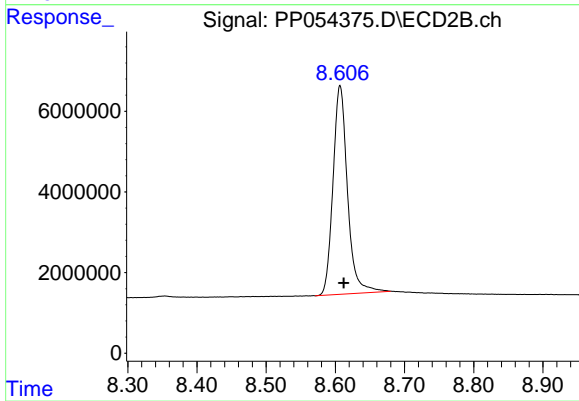
#1 Tetrachloro-m-xylene

R.T.: 3.585 min
Delta R.T.: 0.000 min
Response: 81241258
Conc: 50.37 ng/ml



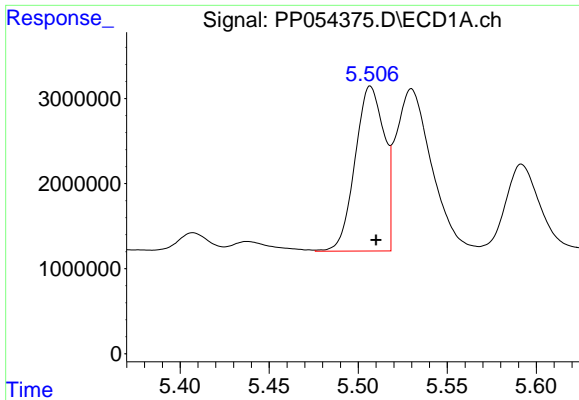
#2 Decachlorobiphenyl

R.T.: 10.097 min
Delta R.T.: -0.004 min
Response: 65822085
Conc: 45.83 ng/ml



#2 Decachlorobiphenyl

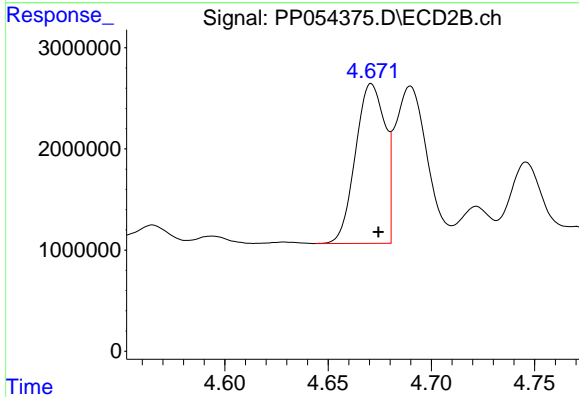
R.T.: 8.607 min
Delta R.T.: -0.005 min
Response: 75279371
Conc: 53.36 ng/ml



#3 AR-1016-1

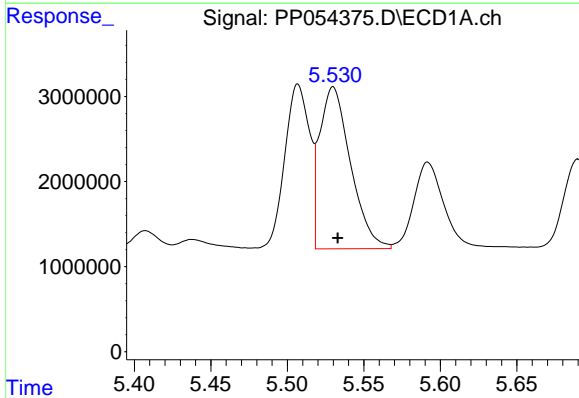
R.T.: 5.507 min
 Delta R.T.: -0.003 min
 Response: 22036614
 Conc: 298.21 ng/ml

Instrument :
 ECD_P
 ClientSampleId :



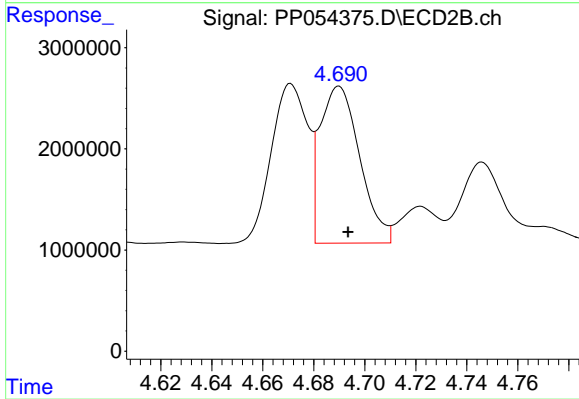
#3 AR-1016-1

R.T.: 4.671 min
 Delta R.T.: -0.003 min
 Response: 15691562
 Conc: 301.57 ng/ml



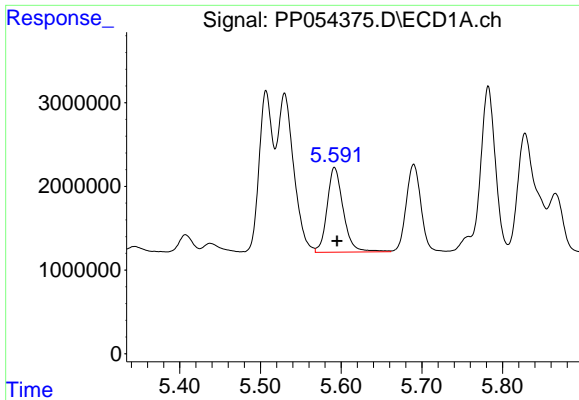
#4 AR-1016-2

R.T.: 5.530 min
 Delta R.T.: -0.003 min
 Response: 26692550
 Conc: 250.12 ng/ml



#4 AR-1016-2

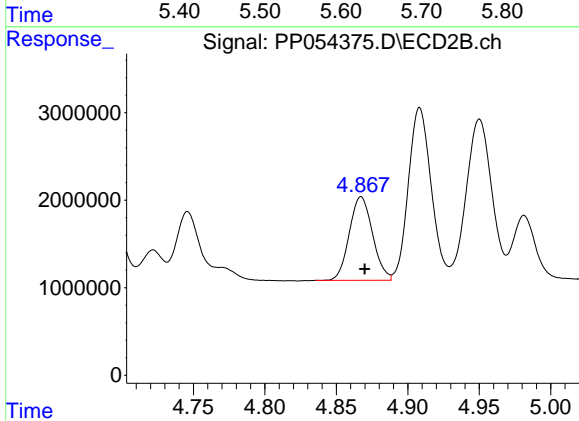
R.T.: 4.690 min
 Delta R.T.: -0.004 min
 Response: 16760922
 Conc: 234.02 ng/ml



#5 AR-1016-3

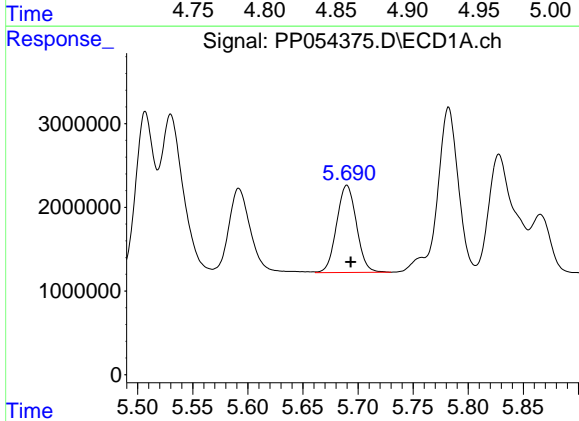
R.T.: 5.592 min
 Delta R.T.: -0.003 min
 Response: 14061980
 Conc: 205.54 ng/ml

Instrument :
 ECD_P
 ClientSampleId :



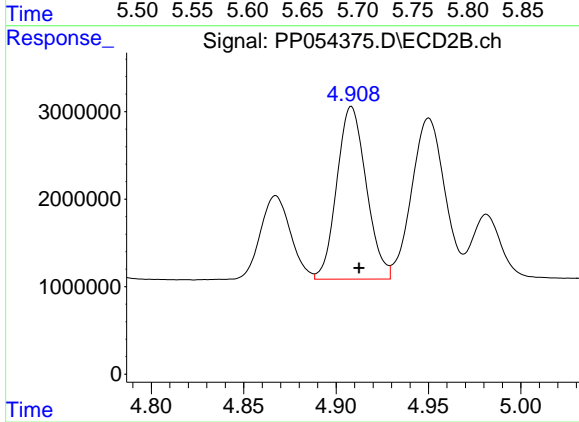
#5 AR-1016-3

R.T.: 4.867 min
 Delta R.T.: -0.003 min
 Response: 10840973
 Conc: 276.36 ng/ml



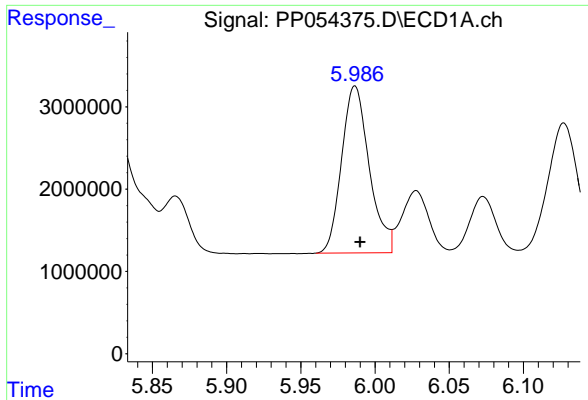
#6 AR-1016-4

R.T.: 5.690 min
 Delta R.T.: -0.004 min
 Response: 13063054
 Conc: 250.90 ng/ml



#6 AR-1016-4

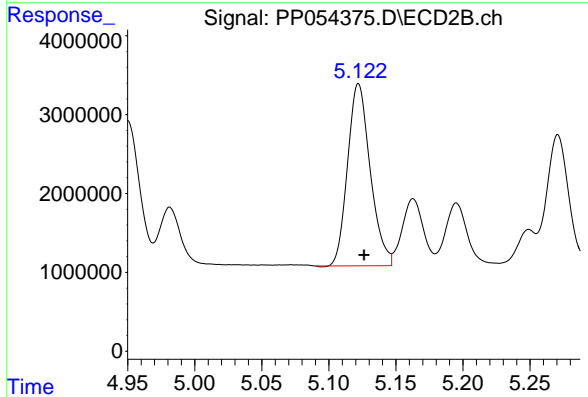
R.T.: 4.908 min
 Delta R.T.: -0.004 min
 Response: 21868774
 Conc: 635.46 ng/ml



#7 AR-1016-5

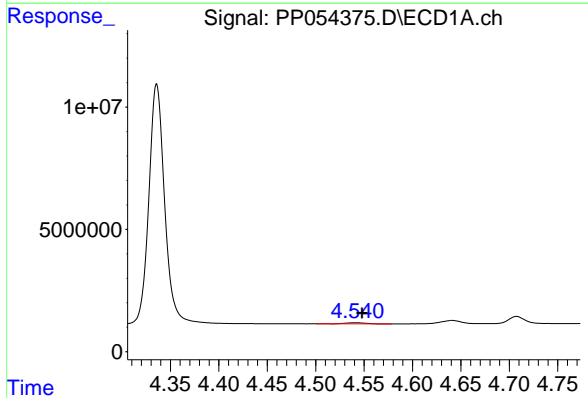
R.T.: 5.987 min
 Delta R.T.: -0.003 min
 Response: 26313198
 Conc: 581.16 ng/ml

Instrument :
 ECD_P
 ClientSampleId :



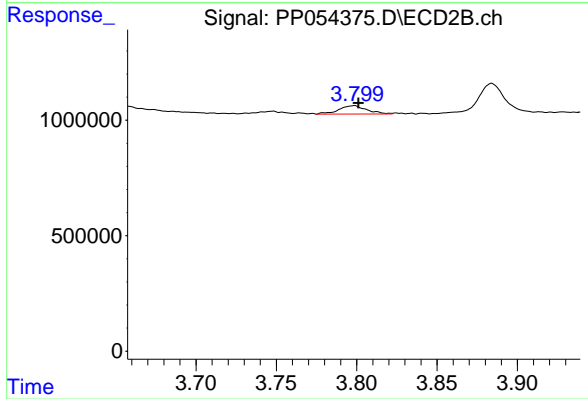
#7 AR-1016-5

R.T.: 5.122 min
 Delta R.T.: -0.004 min
 Response: 27084930
 Conc: 616.02 ng/ml



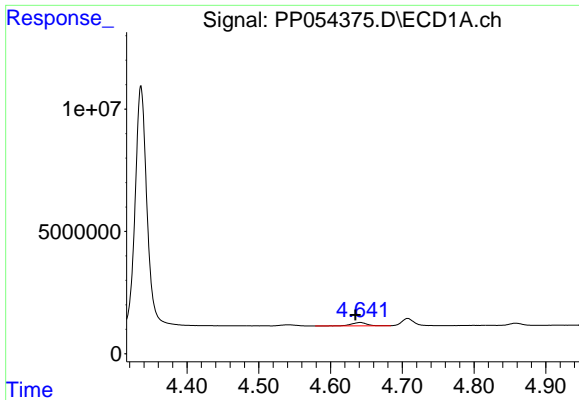
#8 AR-1221-1

R.T.: 4.541 min
 Delta R.T.: -0.007 min
 Response: 697693
 Conc: 29.02 ng/ml



#8 AR-1221-1

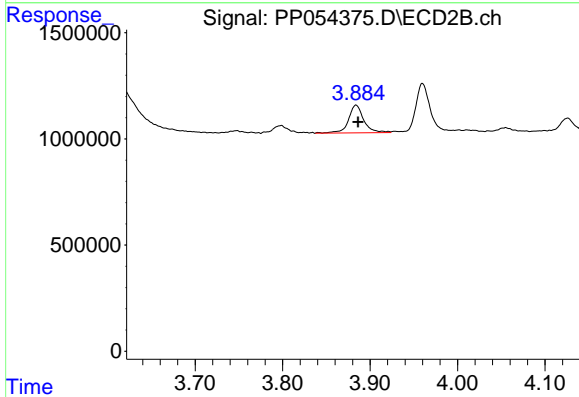
R.T.: 3.798 min
 Delta R.T.: -0.003 min
 Response: 444146
 Conc: 23.24 ng/ml



#9 AR-1221-2

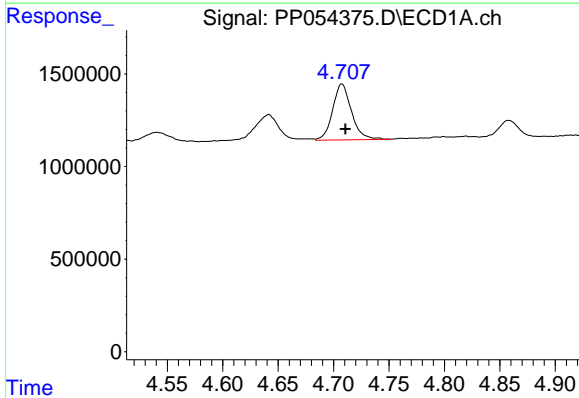
R.T.: 4.641 min
 Delta R.T.: 0.007 min
 Response: 2201517
 Conc: 124.26 ng/ml

Instrument :
 ECD_P
 ClientSampleId :



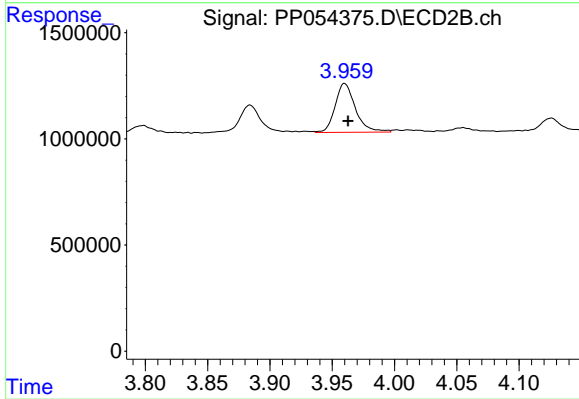
#9 AR-1221-2

R.T.: 3.884 min
 Delta R.T.: -0.002 min
 Response: 1590376
 Conc: 107.86 ng/ml



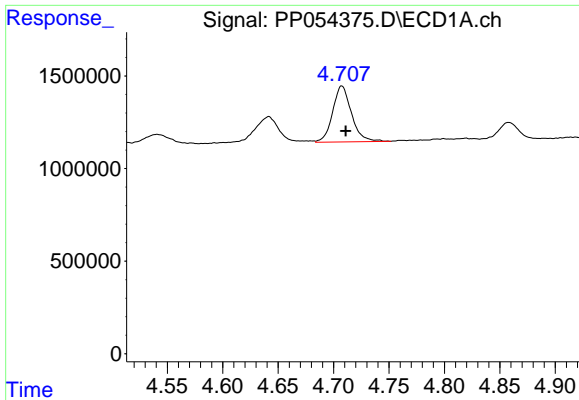
#10 AR-1221-3

R.T.: 4.708 min
 Delta R.T.: -0.003 min
 Response: 3567052
 Conc: 66.18 ng/ml



#10 AR-1221-3

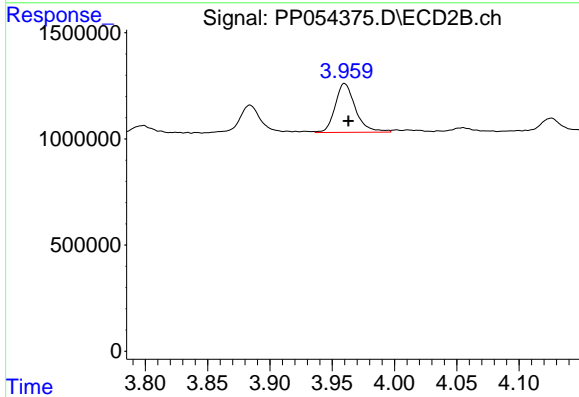
R.T.: 3.960 min
 Delta R.T.: -0.003 min
 Response: 2610434
 Conc: 58.77 ng/ml



#11 AR-1232-1

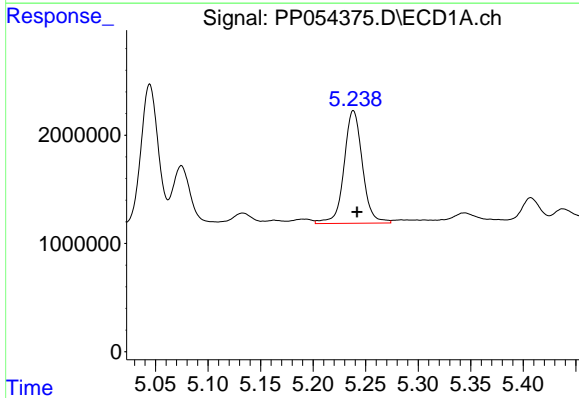
R.T.: 4.708 min
 Delta R.T.: -0.003 min
 Response: 3567052
 Conc: 79.30 ng/ml

Instrument :
 ECD_P
 ClientSampleId :



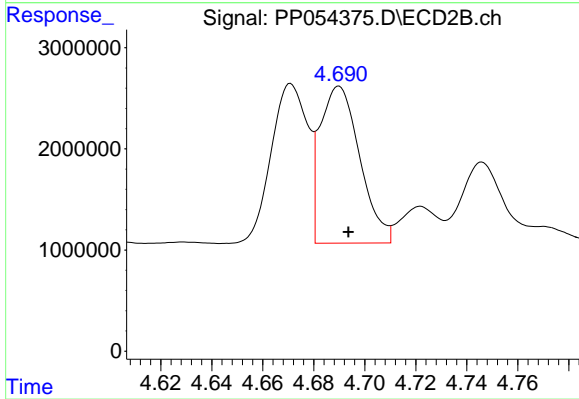
#11 AR-1232-1

R.T.: 3.960 min
 Delta R.T.: -0.003 min
 Response: 2610434
 Conc: 70.14 ng/ml



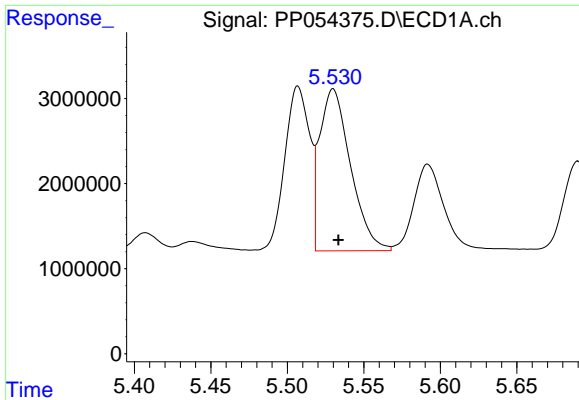
#12 AR-1232-2

R.T.: 5.238 min
 Delta R.T.: -0.003 min
 Response: 12703351
 Conc: 486.83 ng/ml



#12 AR-1232-2

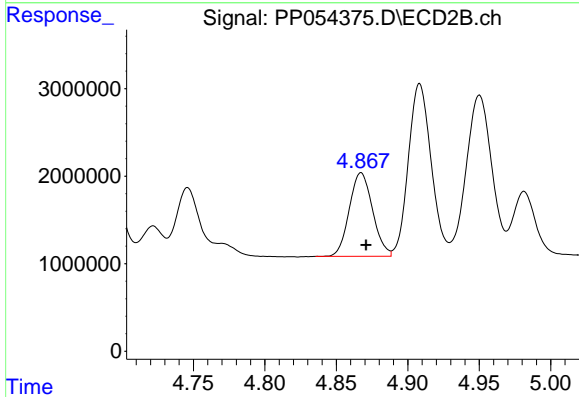
R.T.: 4.690 min
 Delta R.T.: -0.004 min
 Response: 16760922
 Conc: 312.73 ng/ml



#13 AR-1232-3

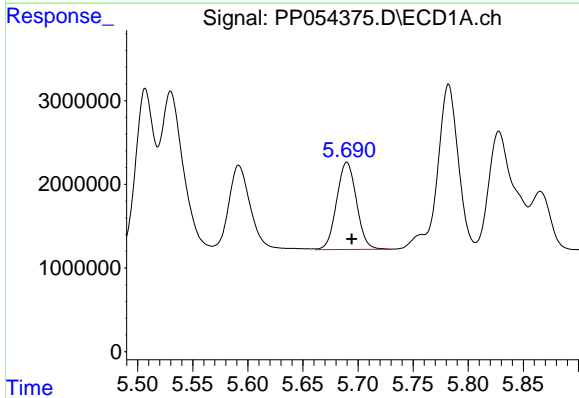
R.T.: 5.530 min
 Delta R.T.: -0.004 min
 Response: 26692550
 Conc: 580.28 ng/ml

Instrument :
 ECD_P
 ClientSampleId :



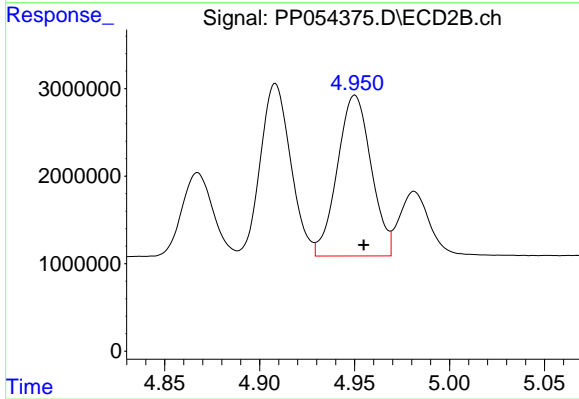
#13 AR-1232-3

R.T.: 4.867 min
 Delta R.T.: -0.003 min
 Response: 10840973
 Conc: 652.97 ng/ml



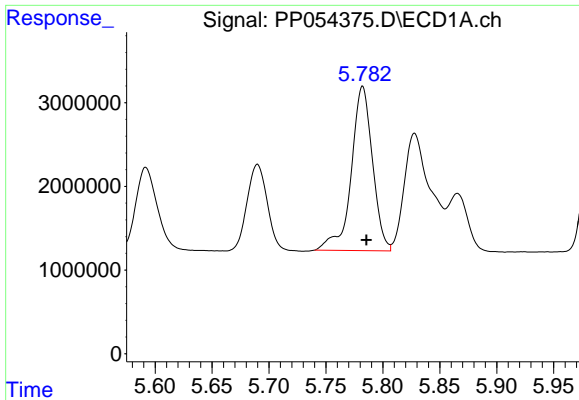
#14 AR-1232-4

R.T.: 5.690 min
 Delta R.T.: -0.004 min
 Response: 13063054
 Conc: 583.37 ng/ml



#14 AR-1232-4

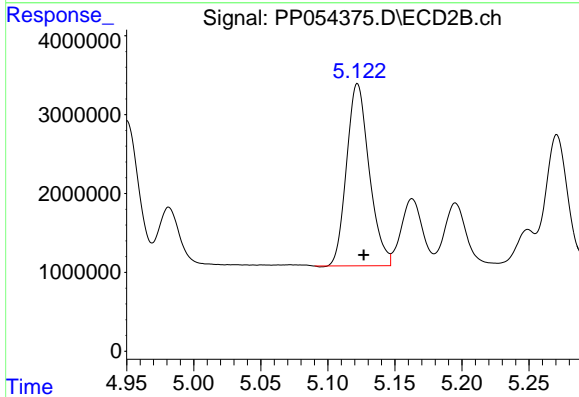
R.T.: 4.950 min
 Delta R.T.: -0.005 min
 Response: 22814196
 Conc: 1359.99 ng/ml



#15 AR-1232-5

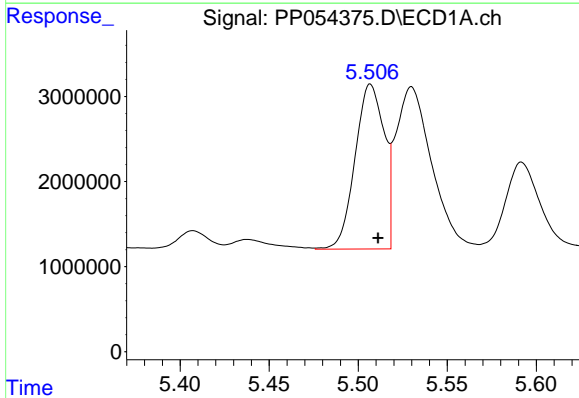
R.T.: 5.782 min
 Delta R.T.: -0.003 min
 Response: 25491951
 Conc: 1432.45 ng/ml

Instrument :
 ECD_P
 ClientSampleId :



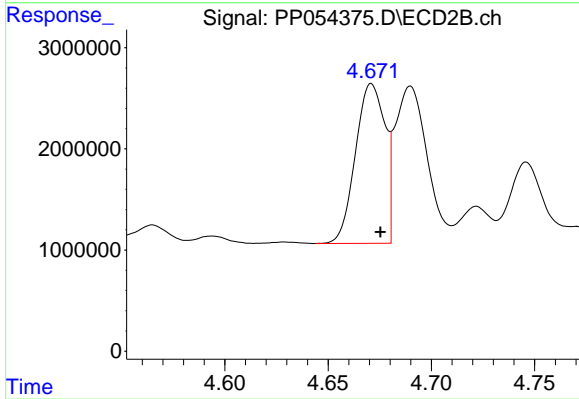
#15 AR-1232-5

R.T.: 5.122 min
 Delta R.T.: -0.005 min
 Response: 27084930
 Conc: 1500.14 ng/ml



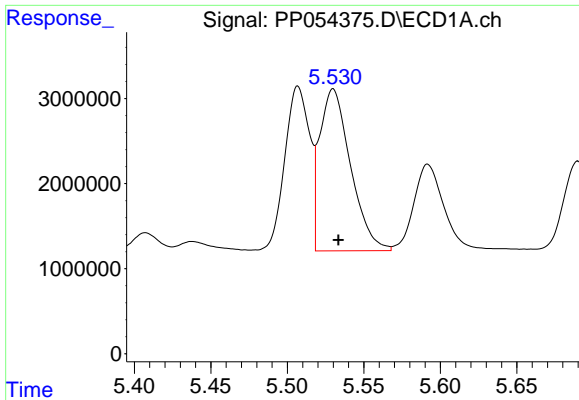
#16 AR-1242-1

R.T.: 5.507 min
 Delta R.T.: -0.004 min
 Response: 22036614
 Conc: 371.13 ng/ml



#16 AR-1242-1

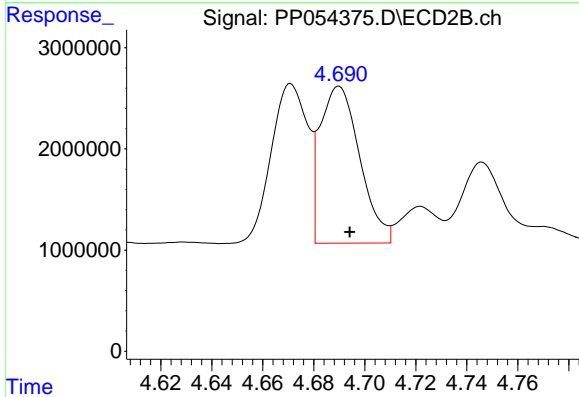
R.T.: 4.671 min
 Delta R.T.: -0.004 min
 Response: 15691562
 Conc: 371.68 ng/ml



#17 AR-1242-2

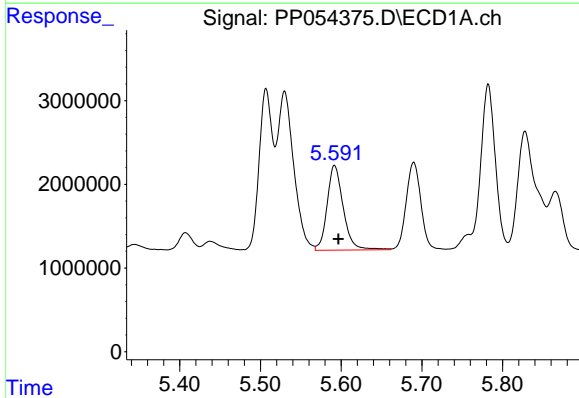
R.T.: 5.530 min
 Delta R.T.: -0.004 min
 Response: 26692550
 Conc: 312.22 ng/ml

Instrument :
 ECD_P
 ClientSampleId :



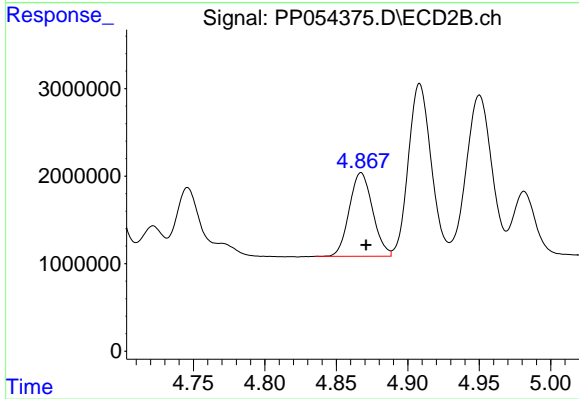
#17 AR-1242-2

R.T.: 4.690 min
 Delta R.T.: -0.004 min
 Response: 16760922
 Conc: 287.90 ng/ml



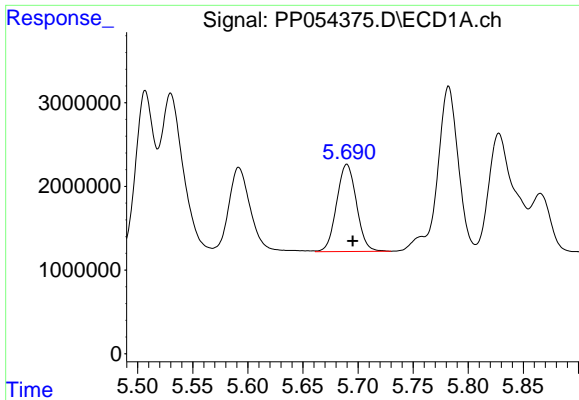
#18 AR-1242-3

R.T.: 5.592 min
 Delta R.T.: -0.005 min
 Response: 14061980
 Conc: 257.37 ng/ml



#18 AR-1242-3

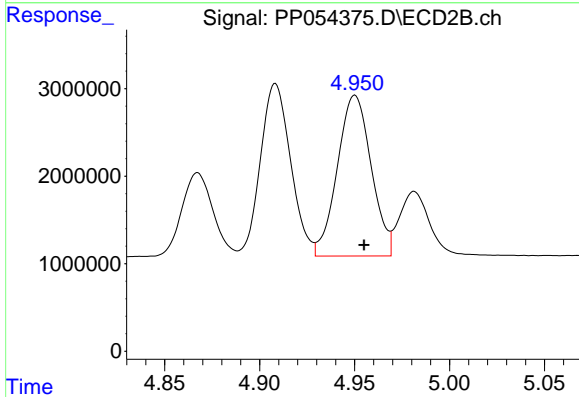
R.T.: 4.867 min
 Delta R.T.: -0.003 min
 Response: 10840973
 Conc: 338.98 ng/ml



#19 AR-1242-4

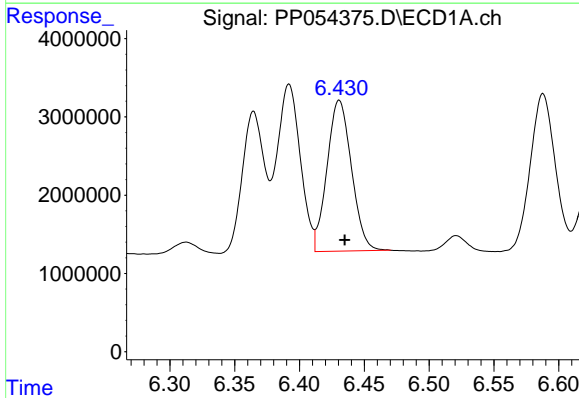
R.T.: 5.690 min
 Delta R.T.: -0.005 min
 Response: 13063054
 Conc: 311.68 ng/ml

Instrument :
 ECD_P
 ClientSampleId :



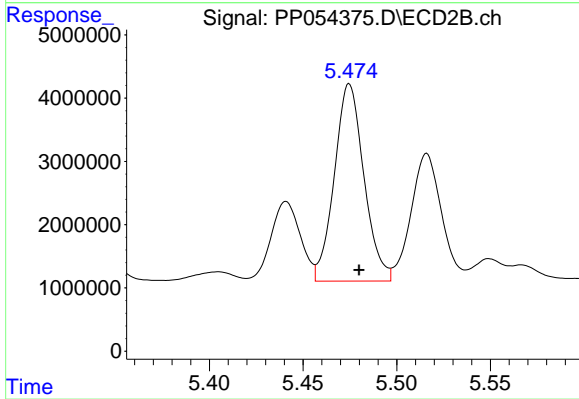
#19 AR-1242-4

R.T.: 4.950 min
 Delta R.T.: -0.005 min
 Response: 22814196
 Conc: 654.00 ng/ml



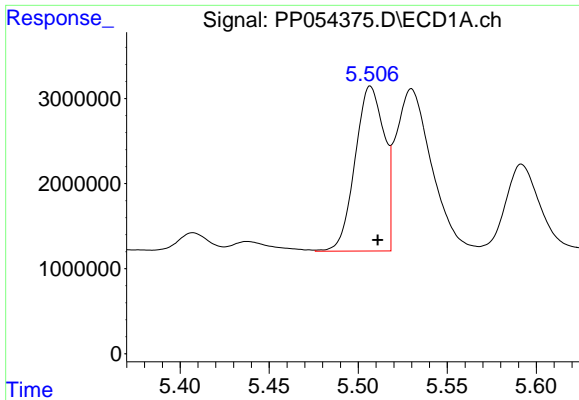
#20 AR-1242-5

R.T.: 6.431 min
 Delta R.T.: -0.004 min
 Response: 25313358
 Conc: 771.17 ng/ml



#20 AR-1242-5

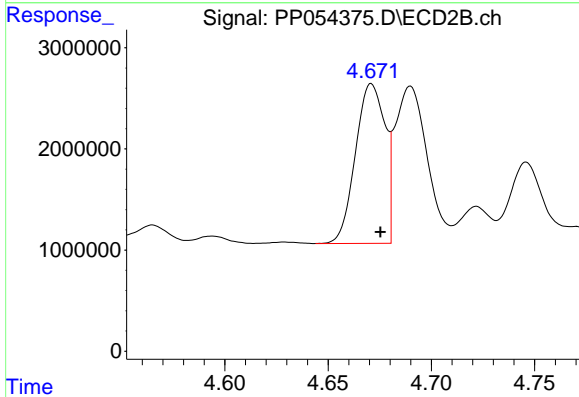
R.T.: 5.475 min
 Delta R.T.: -0.005 min
 Response: 34258673
 Conc: 910.55 ng/ml



#21 AR-1248-1

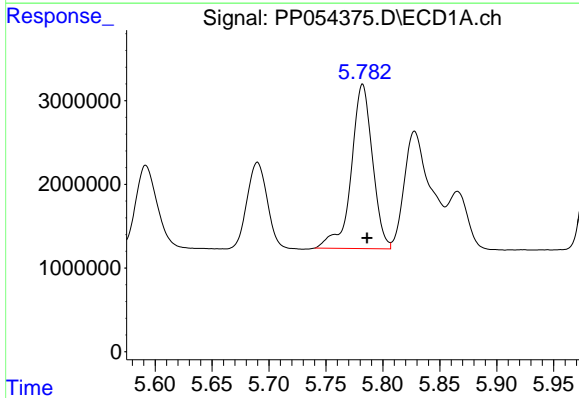
R.T.: 5.507 min
 Delta R.T.: -0.004 min
 Response: 22036614
 Conc: 490.83 ng/ml

Instrument :
 ECD_P
 ClientSampleId :



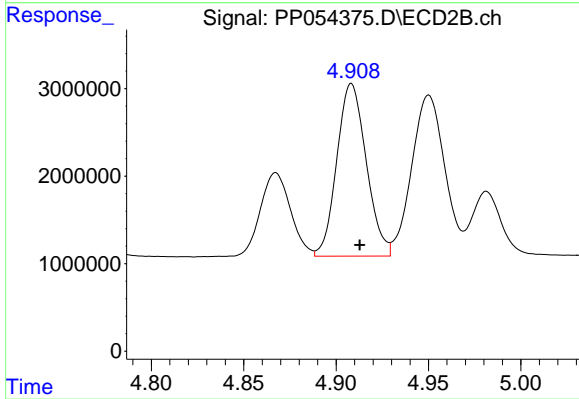
#21 AR-1248-1

R.T.: 4.671 min
 Delta R.T.: -0.004 min
 Response: 15691562
 Conc: 482.39 ng/ml



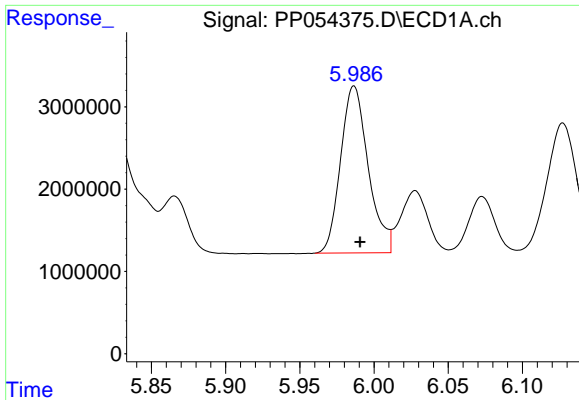
#22 AR-1248-2

R.T.: 5.782 min
 Delta R.T.: -0.004 min
 Response: 25491951
 Conc: 401.21 ng/ml



#22 AR-1248-2

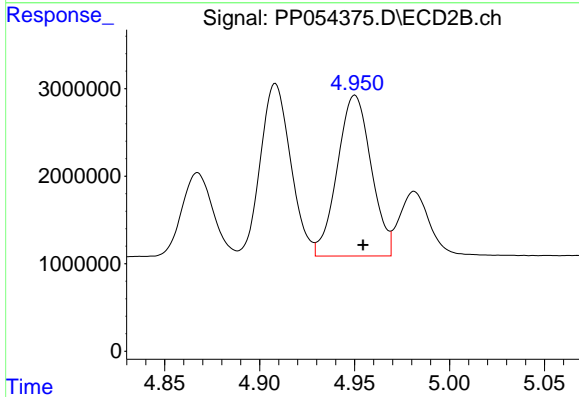
R.T.: 4.908 min
 Delta R.T.: -0.004 min
 Response: 21868774
 Conc: 442.83 ng/ml



#23 AR-1248-3

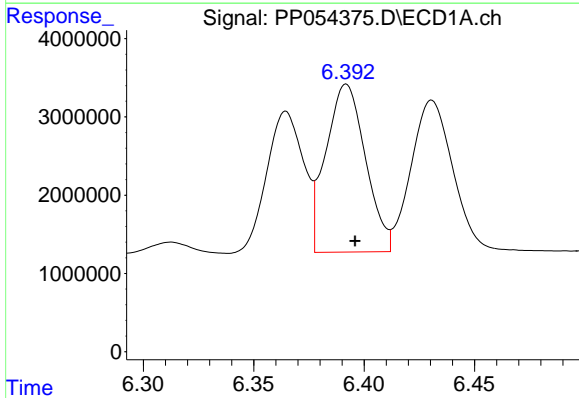
R.T.: 5.987 min
 Delta R.T.: -0.004 min
 Response: 26313198
 Conc: 443.92 ng/ml

Instrument :
 ECD_P
 ClientSampleId :



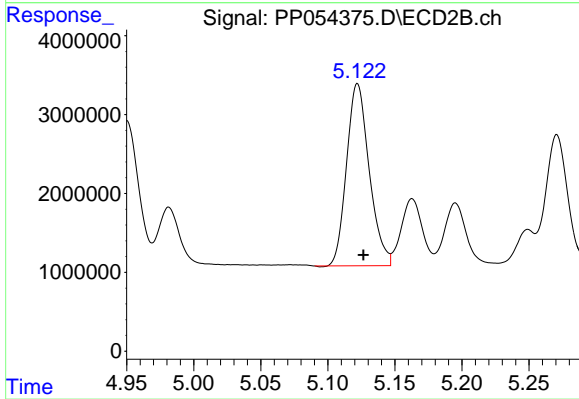
#23 AR-1248-3

R.T.: 4.950 min
 Delta R.T.: -0.004 min
 Response: 22814196
 Conc: 442.09 ng/ml



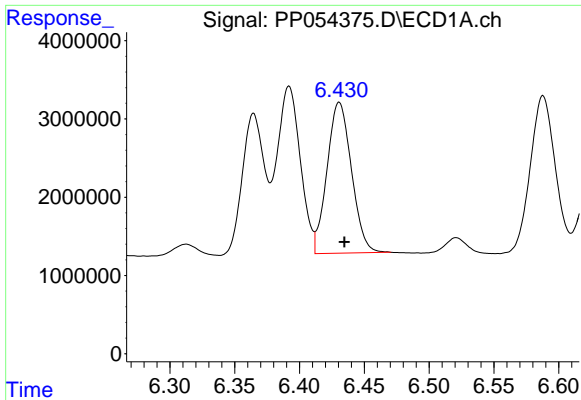
#24 AR-1248-4

R.T.: 6.392 min
 Delta R.T.: -0.004 min
 Response: 26761689
 Conc: 461.98 ng/ml



#24 AR-1248-4

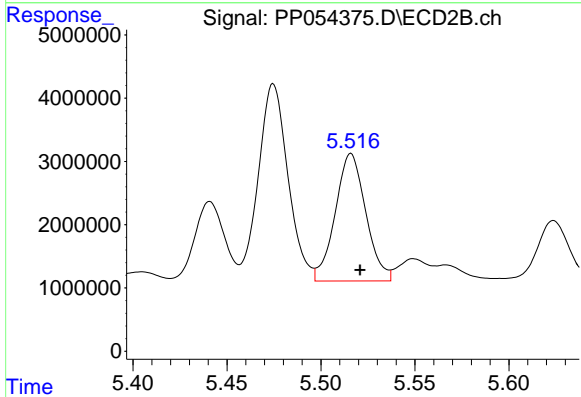
R.T.: 5.122 min
 Delta R.T.: -0.004 min
 Response: 27084930
 Conc: 458.94 ng/ml



#25 AR-1248-5

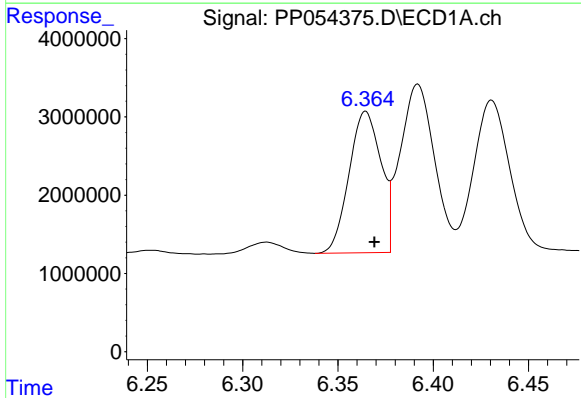
R.T.: 6.431 min
 Delta R.T.: -0.004 min
 Response: 25313358
 Conc: 456.22 ng/ml

Instrument :
 ECD_P
 ClientSampleId :



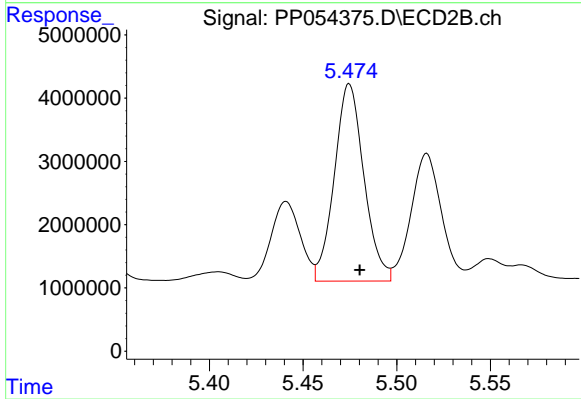
#25 AR-1248-5

R.T.: 5.516 min
 Delta R.T.: -0.005 min
 Response: 22812278
 Conc: 459.98 ng/ml



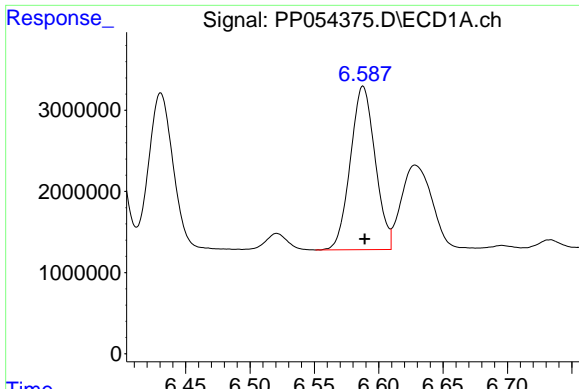
#26 AR-1254-1

R.T.: 6.365 min
 Delta R.T.: -0.005 min
 Response: 21043333
 Conc: 338.67 ng/ml



#26 AR-1254-1

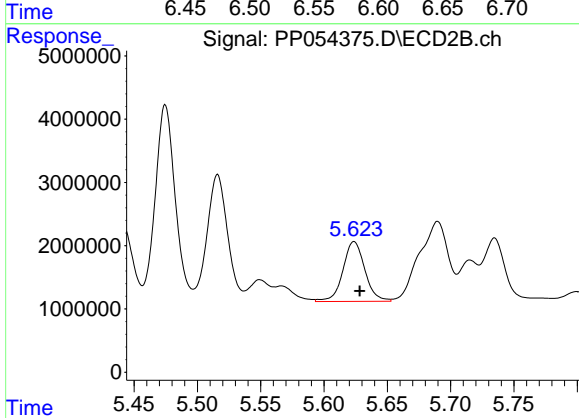
R.T.: 5.475 min
 Delta R.T.: -0.005 min
 Response: 34258673
 Conc: 399.49 ng/ml



#27 AR-1254-2

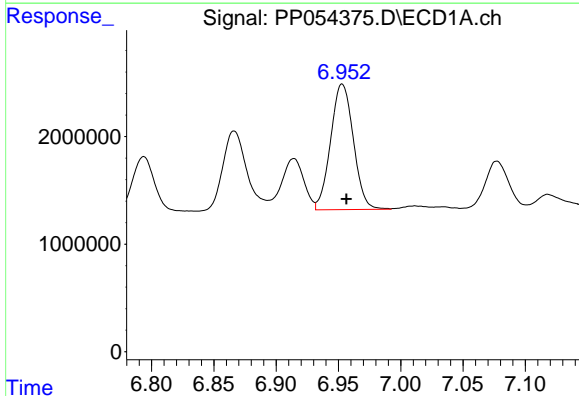
R.T.: 6.588 min
 Delta R.T.: -0.001 min
 Response: 26955119
 Conc: 287.23 ng/ml

Instrument :
 ECD_P
 ClientSampleId :



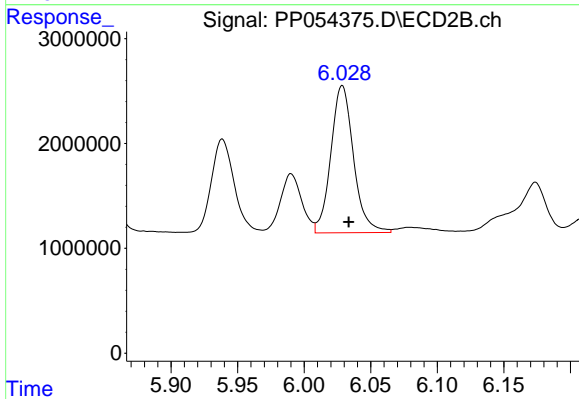
#27 AR-1254-2

R.T.: 5.624 min
 Delta R.T.: -0.004 min
 Response: 11451122
 Conc: 154.14 ng/ml



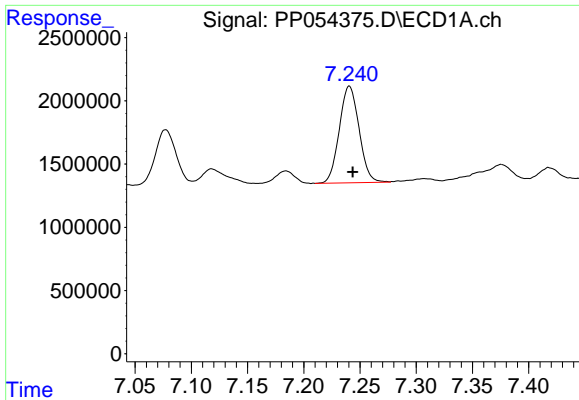
#28 AR-1254-3

R.T.: 6.953 min
 Delta R.T.: -0.003 min
 Response: 14860691
 Conc: 156.55 ng/ml



#28 AR-1254-3

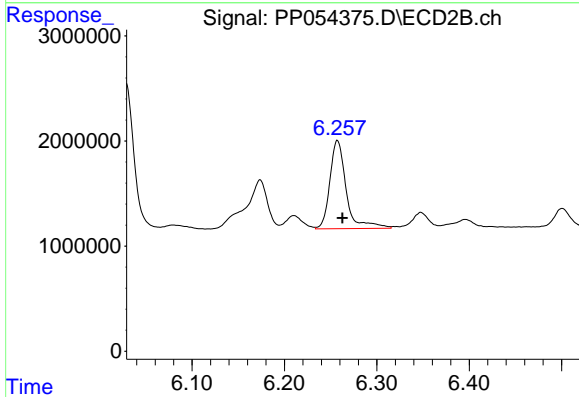
R.T.: 6.029 min
 Delta R.T.: -0.005 min
 Response: 16670862
 Conc: 143.63 ng/ml



#29 AR-1254-4

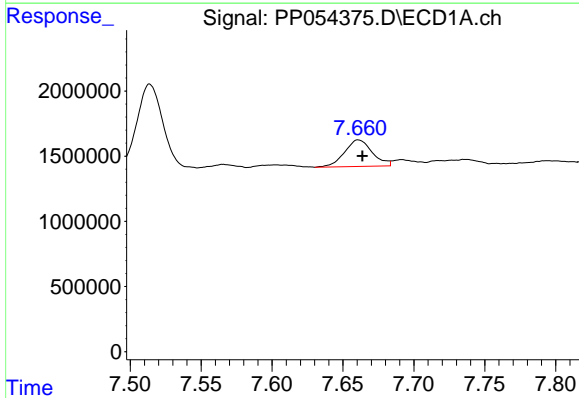
R.T.: 7.241 min
 Delta R.T.: -0.003 min
 Response: 9362785
 Conc: 138.02 ng/ml

Instrument :
 ECD_P
 ClientSampleId :



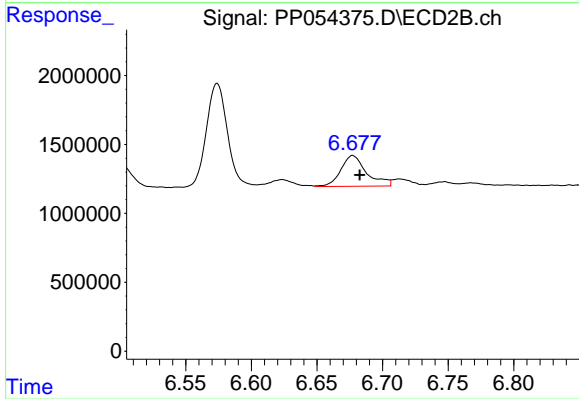
#29 AR-1254-4

R.T.: 6.257 min
 Delta R.T.: -0.005 min
 Response: 10358598
 Conc: 164.55 ng/ml



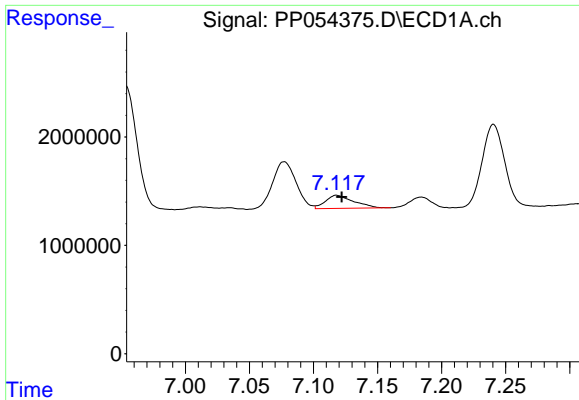
#30 AR-1254-5

R.T.: 7.661 min
 Delta R.T.: -0.003 min
 Response: 2769115
 Conc: 36.43 ng/ml



#30 AR-1254-5

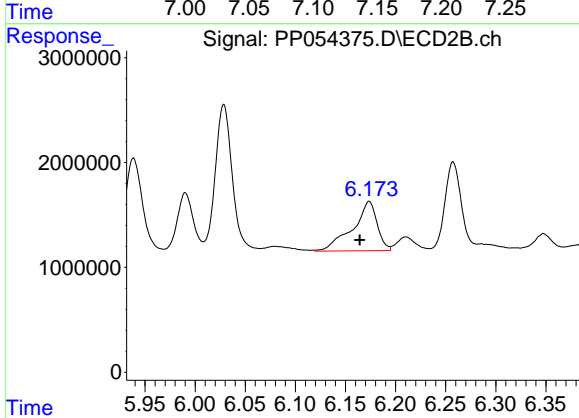
R.T.: 6.677 min
 Delta R.T.: -0.005 min
 Response: 3077444
 Conc: 32.18 ng/ml



#31 AR-1260-1

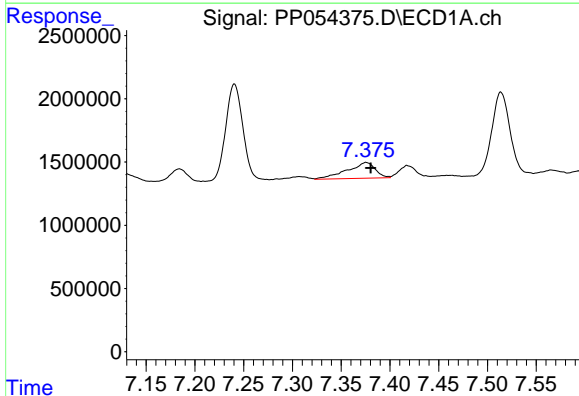
R.T.: 7.118 min
 Delta R.T.: -0.004 min
 Response: 1857309
 Conc: 23.83 ng/ml

Instrument :
 ECD_P
 ClientSampleId :



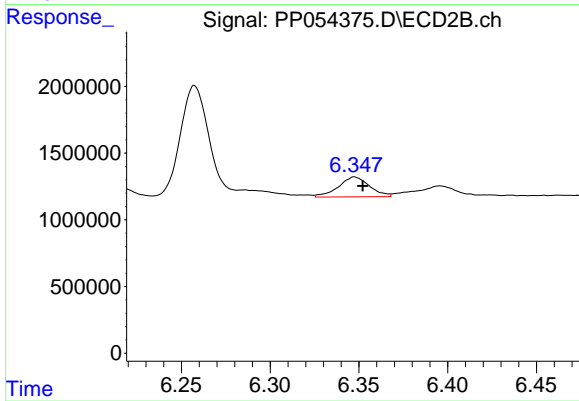
#31 AR-1260-1

R.T.: 6.174 min
 Delta R.T.: 0.010 min
 Response: 8025930
 Conc: 94.74 ng/ml



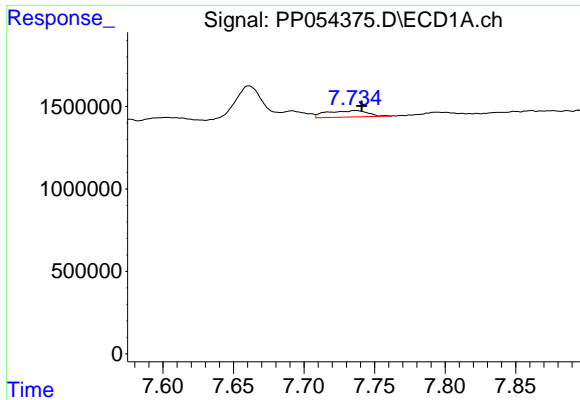
#32 AR-1260-2

R.T.: 7.376 min
 Delta R.T.: -0.005 min
 Response: 2510257
 Conc: 28.03 ng/ml



#32 AR-1260-2

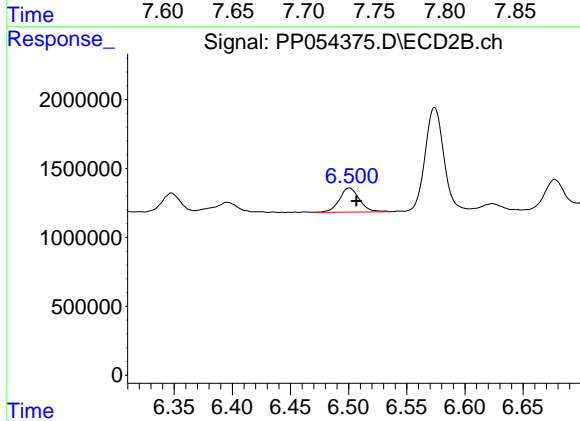
R.T.: 6.348 min
 Delta R.T.: -0.005 min
 Response: 1820006
 Conc: 19.03 ng/ml



#33 AR-1260-3

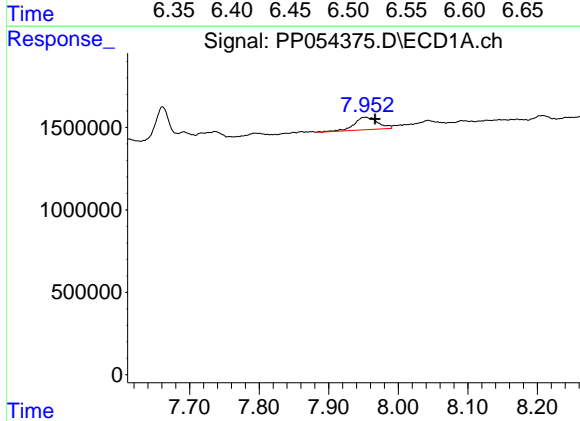
R.T.: 7.737 min
 Delta R.T.: -0.004 min
 Response: 787677
 Conc: 11.53 ng/ml

Instrument :
 ECD_P
 ClientSampleId :



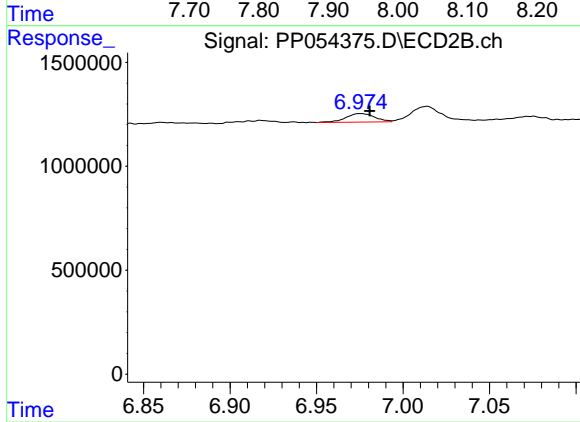
#33 AR-1260-3

R.T.: 6.501 min
 Delta R.T.: -0.006 min
 Response: 2123315
 Conc: 23.23 ng/ml



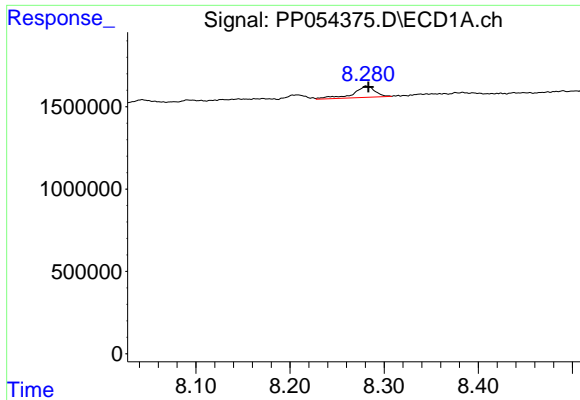
#34 AR-1260-4

R.T.: 7.953 min
 Delta R.T.: -0.014 min
 Response: 1815272
 Conc: 22.78 ng/ml



#34 AR-1260-4

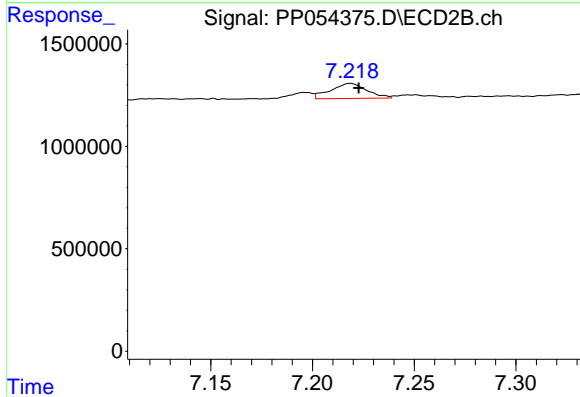
R.T.: 6.975 min
 Delta R.T.: -0.005 min
 Response: 484164
 Conc: 6.39 ng/ml



#35 AR-1260-5

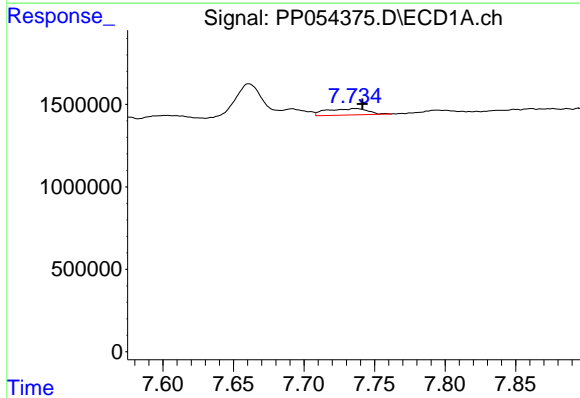
R.T.: 8.281 min
 Delta R.T.: -0.002 min
 Response: 1095386
 Conc: 7.64 ng/ml

Instrument :
 ECD_P
 ClientSampleId :



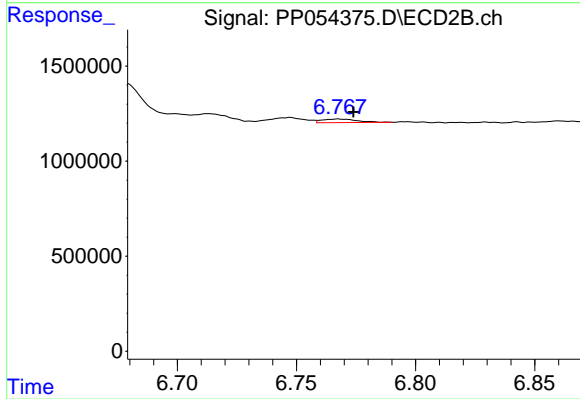
#35 AR-1260-5

R.T.: 7.219 min
 Delta R.T.: -0.004 min
 Response: 904070
 Conc: 5.71 ng/ml



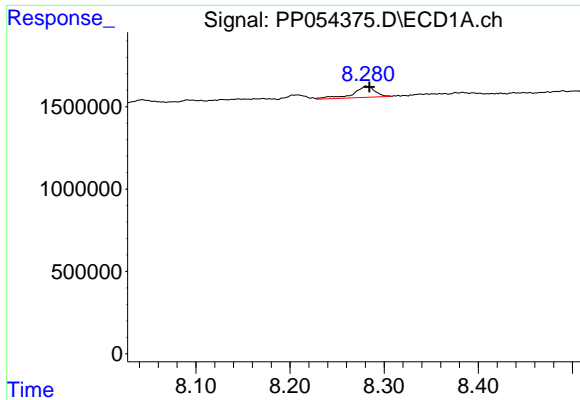
#36 AR-1262-1

R.T.: 7.737 min
 Delta R.T.: -0.005 min
 Response: 787677
 Conc: 9.36 ng/ml



#36 AR-1262-1

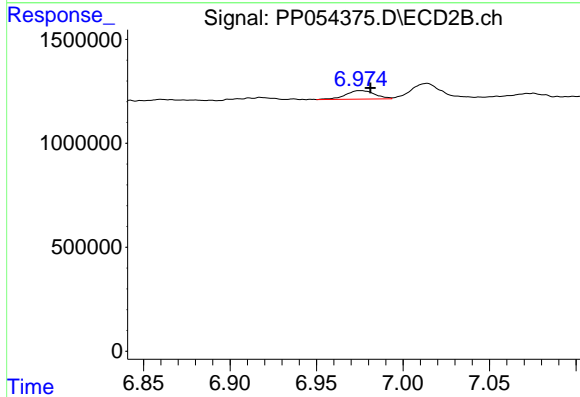
R.T.: 6.768 min
 Delta R.T.: -0.006 min
 Response: 192326
 Conc: 4.71 ng/ml



#37 AR-1262-2

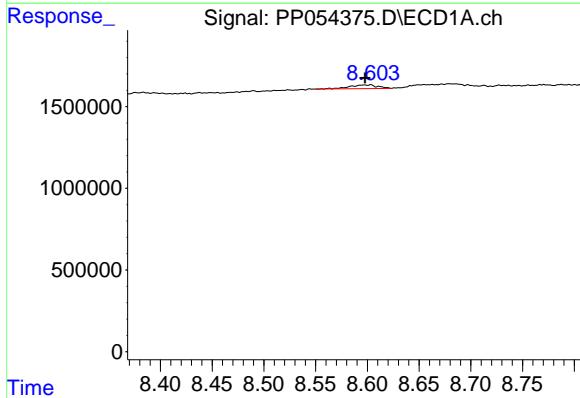
R.T.: 8.281 min
 Delta R.T.: -0.003 min
 Response: 1095386
 Conc: 7.74 ng/ml

Instrument :
 ECD_P
 ClientSampleId :



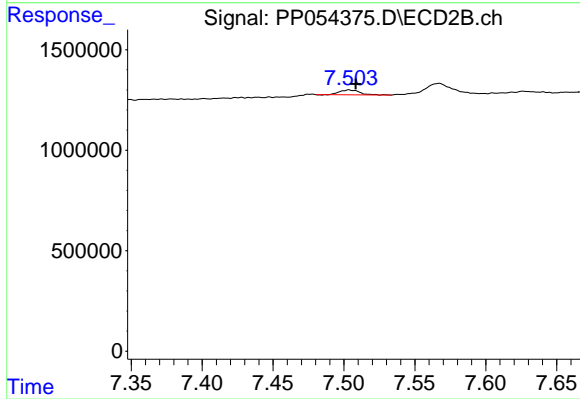
#37 AR-1262-2

R.T.: 6.975 min
 Delta R.T.: -0.006 min
 Response: 484164
 Conc: 5.59 ng/ml



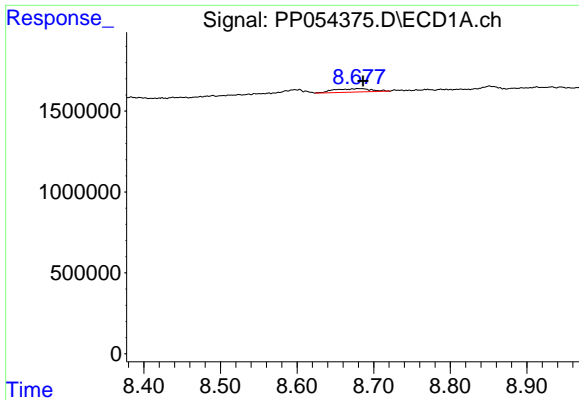
#38 AR-1262-3

R.T.: 8.603 min
 Delta R.T.: 0.005 min
 Response: 429269
 Conc: 4.15 ng/ml



#38 AR-1262-3

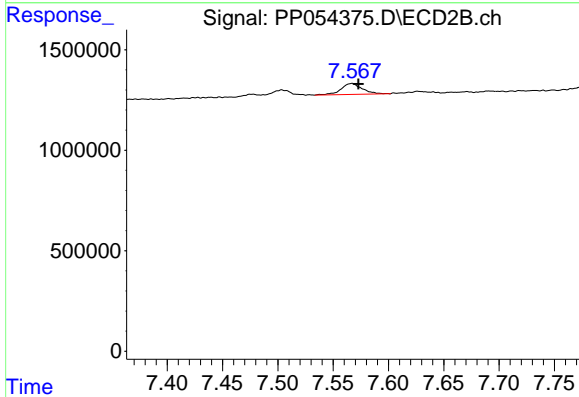
R.T.: 7.504 min
 Delta R.T.: -0.005 min
 Response: 232864
 Conc: 3.49 ng/ml



#39 AR-1262-4

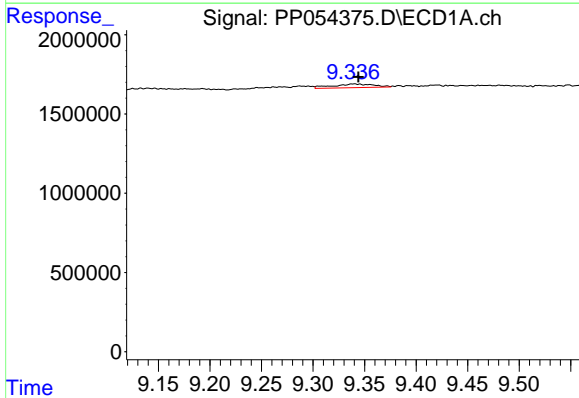
R.T.: 8.679 min
 Delta R.T.: -0.007 min
 Response: 721740
 Conc: 14.26 ng/ml

Instrument :
 ECD_P
 ClientSampleId :



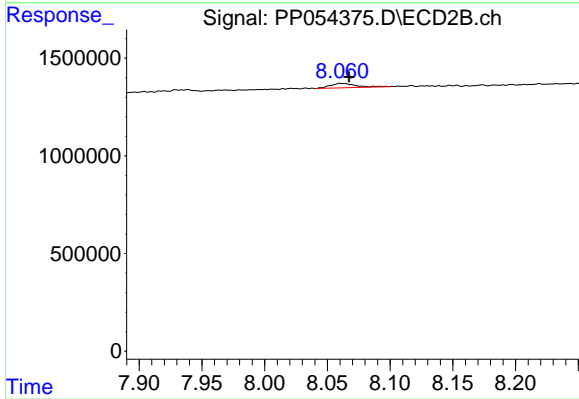
#39 AR-1262-4

R.T.: 7.567 min
 Delta R.T.: -0.006 min
 Response: 719776
 Conc: 6.15 ng/ml



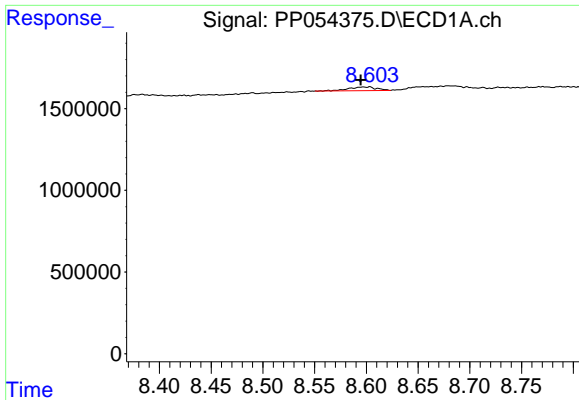
#40 AR-1262-5

R.T.: 9.340 min
 Delta R.T.: -0.004 min
 Response: 643827
 Conc: 11.46 ng/ml



#40 AR-1262-5

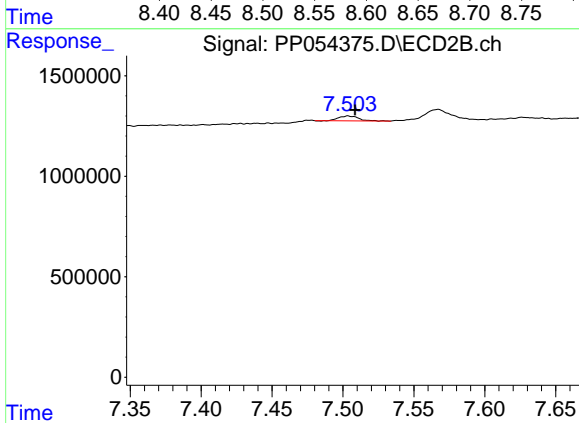
R.T.: 8.061 min
 Delta R.T.: -0.006 min
 Response: 317624
 Conc: 5.77 ng/ml



#41 AR-1268-1

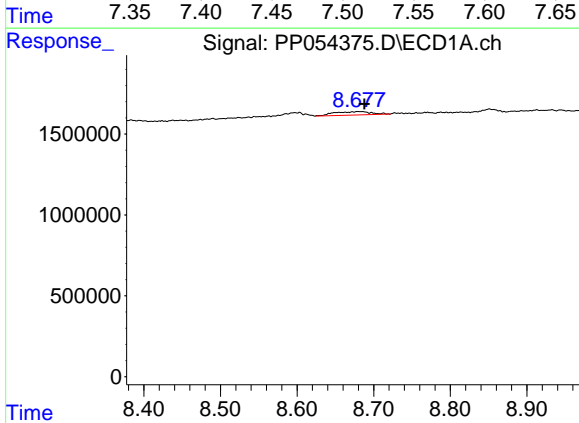
R.T.: 8.603 min
 Delta R.T.: 0.009 min
 Response: 429269
 Conc: 2.20 ng/ml

Instrument :
 ECD_P
 ClientSampleId :



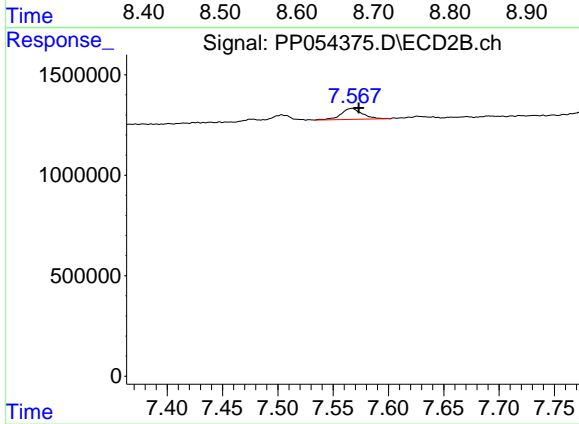
#41 AR-1268-1

R.T.: 7.504 min
 Delta R.T.: -0.005 min
 Response: 232864
 Conc: 1.15 ng/ml



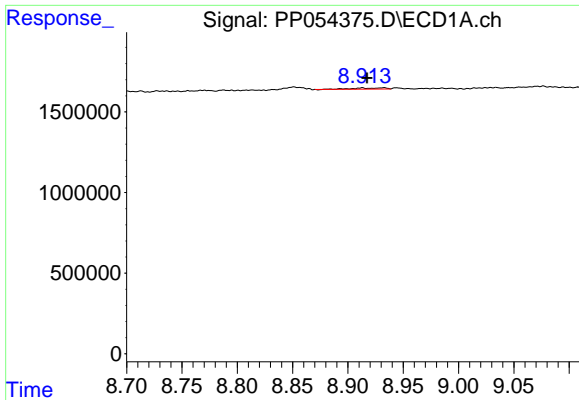
#42 AR-1268-2

R.T.: 8.679 min
 Delta R.T.: -0.008 min
 Response: 721740
 Conc: 4.09 ng/ml



#42 AR-1268-2

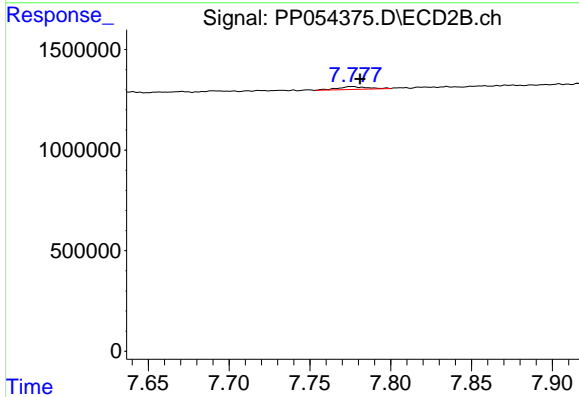
R.T.: 7.567 min
 Delta R.T.: -0.006 min
 Response: 719776
 Conc: 3.91 ng/ml



#43 AR-1268-3

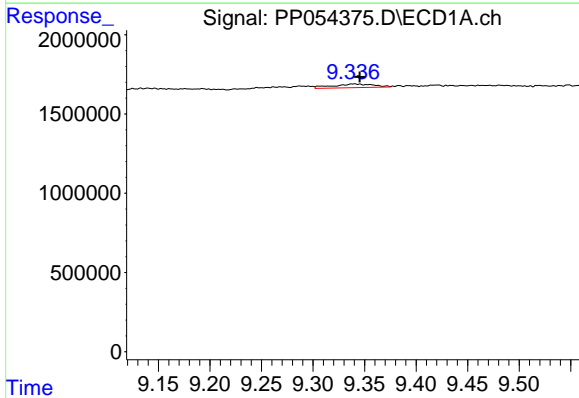
R.T.: 8.913 min
 Delta R.T.: -0.004 min
 Response: 149106
 Conc: 0.96 ng/ml

Instrument :
 ECD_P
 ClientSampleId :



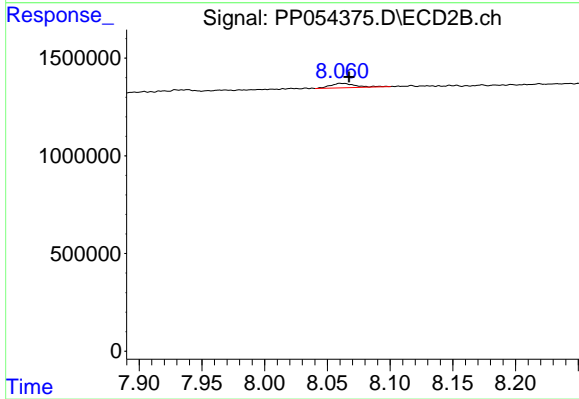
#43 AR-1268-3

R.T.: 7.776 min
 Delta R.T.: -0.005 min
 Response: 178735
 Conc: 1.05 ng/ml



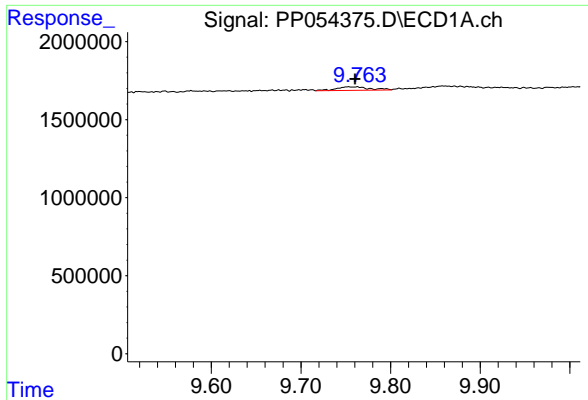
#44 AR-1268-4

R.T.: 9.340 min
 Delta R.T.: -0.005 min
 Response: 643827
 Conc: 9.41 ng/ml



#44 AR-1268-4

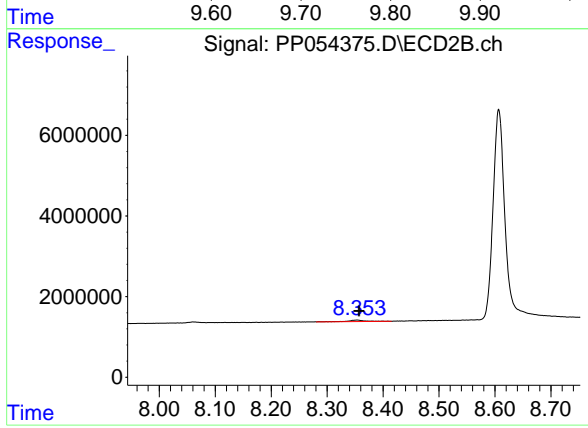
R.T.: 8.061 min
 Delta R.T.: -0.006 min
 Response: 317624
 Conc: 5.03 ng/ml



#45 AR-1268-5

R.T.: 9.754 min
 Delta R.T.: -0.007 min
 Response: 581473
 Conc: 1.14 ng/ml

Instrument :
 ECD_P
 ClientSampleId :



#45 AR-1268-5

R.T.: 8.353 min
 Delta R.T.: -0.004 min
 Response: 674504
 Conc: 1.38 ng/ml