

Data Path : Z:\pestpcbsrv\HPCHEM1\ECD_P\Data\PP011024\
 Data File : PP062795.D
 Signal(s) : Signal #1: ECD1A.ch Signal #2: ECD2B.ch
 Acq On : 10 Jan 2024 18:36
 Operator : YP\AJ
 Sample : AR1660ICC250
 Misc :
 ALS Vial : 6 Sample Multiplier: 1

Instrument :
 ECD_P
ClientSampleId :
 AR1660ICC250

Integration File signal 1: autoint1.e
 Integration File signal 2: autoint2.e
 Quant Time: Jan 11 00:59:37 2024
 Quant Method : Z:\pestpcbsrv\HPCHEM1\ECD_P\methods\PP011024.M
 Quant Title : GC EXTRACTABLES
 QLast Update : Thu Jan 11 00:49:05 2024
 Response via : Initial Calibration
 Integrator: ChemStation

Volume Inj. : 2 µl
 Signal #1 Phase : ZB-MR1 Signal #2 Phase: ZB-MR2
 Signal #1 Info : 30Mx0.32mmx 0.50µ Signal #2 Info : 30M x 0.32mm x 0.25µm

Compound	RT#1	RT#2	Resp#1	Resp#2	ng/ml	ng/ml

System Monitoring Compounds						
1) SA Tetrachlo...	4.396	3.682	67357843	91027002	25.499	25.668
2) SA Decachlor...	10.159	8.788	41482812	62186231	26.442	26.932
Target Compounds						
3) L1 AR-1016-1	5.571	4.790	21337413	28430264	266.949	270.101
4) L1 AR-1016-2	5.593	4.810	31707719	39555610	265.959	266.082
5) L1 AR-1016-3	5.655	4.989	19666435	22107811	269.668	271.384
6) L1 AR-1016-4	5.754	5.032	16350947	18520119	269.482	278.392
7) L1 AR-1016-5	6.050	5.250	16826032	24387865	273.158	275.986
31) L7 AR-1260-1	7.183	6.300	27343804	44904467	267.938	271.309
32) L7 AR-1260-2	7.441	6.490	29913357	51540167	271.179	272.010
33) L7 AR-1260-3	7.803	6.646	23313512	48978498	278.847	268.503
34) L7 AR-1260-4	8.029	7.124	23558877	39549576	268.968	271.171
35) L7 AR-1260-5	8.349	7.368	42273788	82353345	264.997	260.250

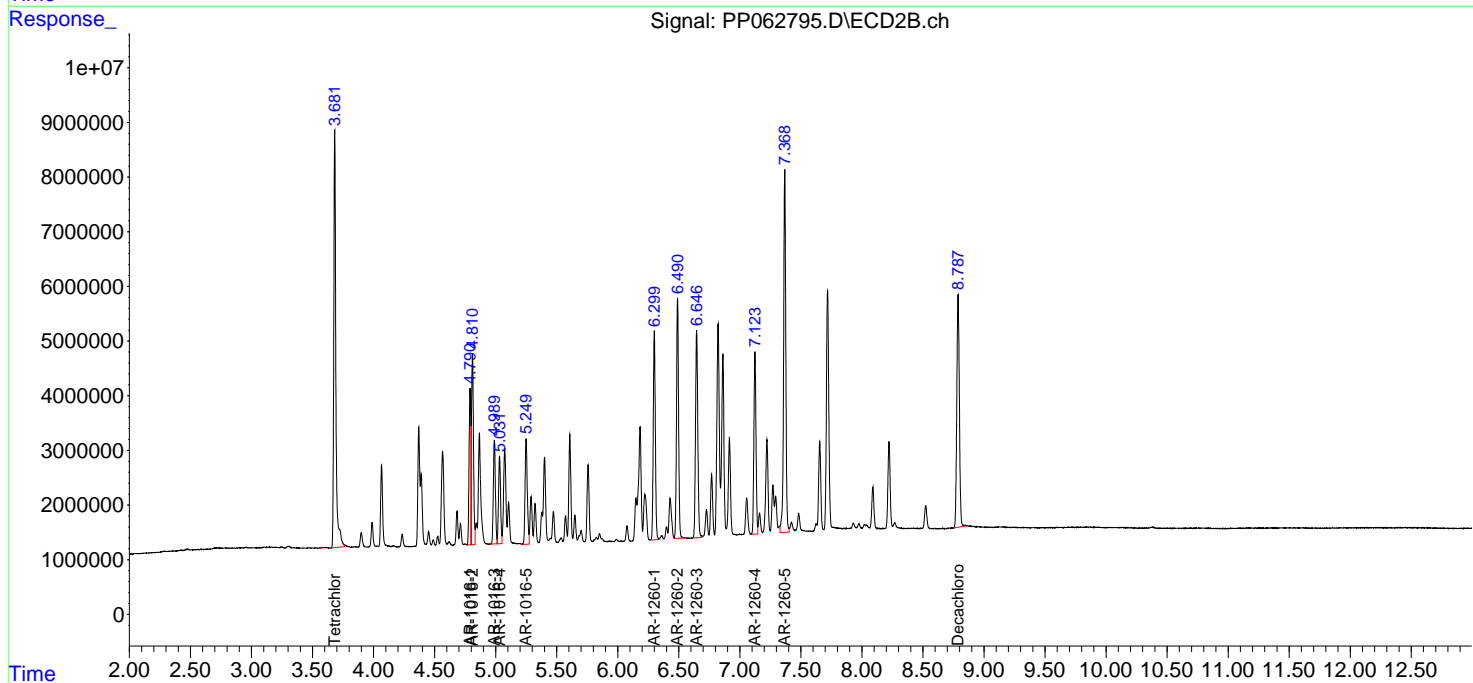
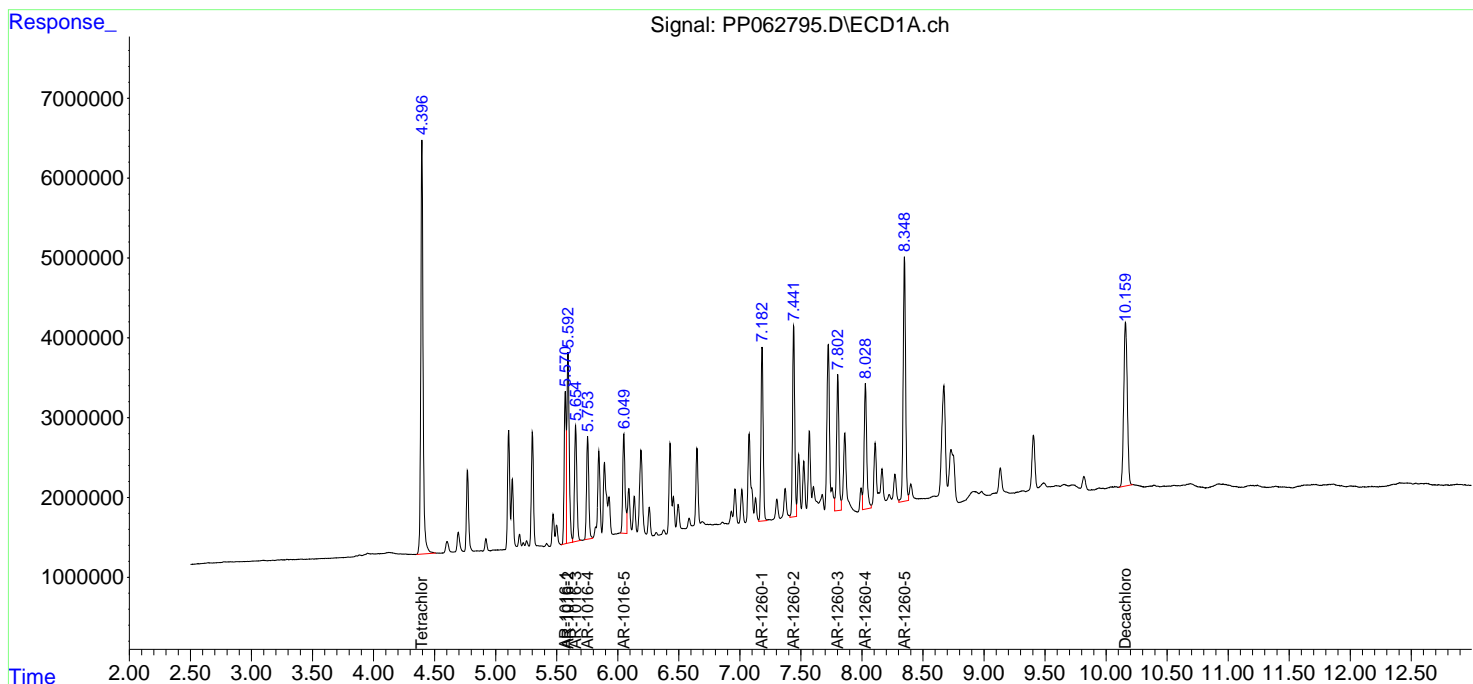
(f)=RT Delta > 1/2 Window (#)=Amounts differ by > 25% (m)=manual int.

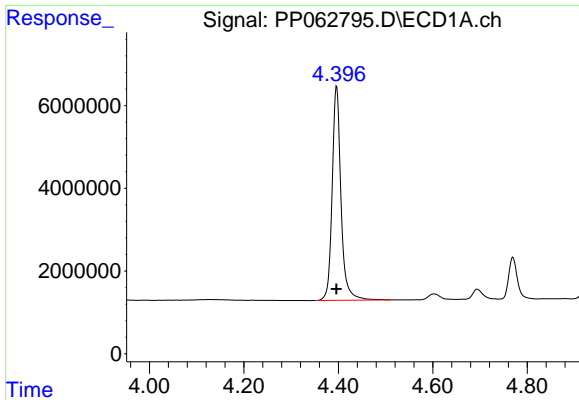
Data Path : Z:\pestpcbsrv\HPCHEM1\ECD_P\Data\PP011024\
 Data File : PP062795.D
 Signal(s) : Signal #1: ECD1A.ch Signal #2: ECD2B.ch
 Acq On : 10 Jan 2024 18:36
 Operator : YP\AJ
 Sample : AR1660ICC250
 Misc :
 ALS Vial : 6 Sample Multiplier: 1

Instrument :
 ECD_P
 ClientSampleId :
 AR1660ICC250

Integration File signal 1: autoint1.e
 Integration File signal 2: autoint2.e
 Quant Time: Jan 11 00:59:37 2024
 Quant Method : Z:\pestpcbsrv\HPCHEM1\ECD_P\methods\PP011024.M
 Quant Title : GC EXTRACTABLES
 QLast Update : Thu Jan 11 00:49:05 2024
 Response via : Initial Calibration
 Integrator: ChemStation

Volume Inj. : 2 µl
 Signal #1 Phase : ZB-MR1 Signal #2 Phase: ZB-MR2
 Signal #1 Info : 30Mx0.32mmx 0.50µ Signal #2 Info : 30M x 0.32mm x 0.25µm

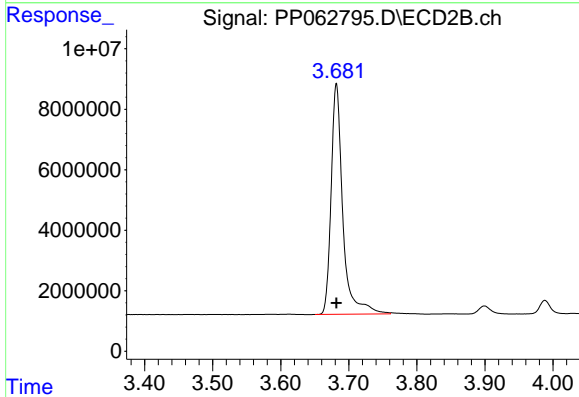




#1 Tetrachloro-m-xylene

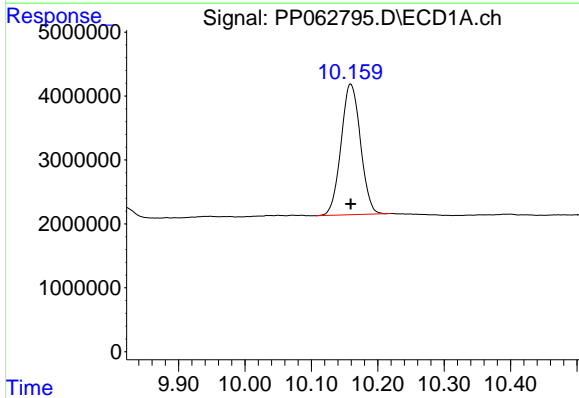
R.T.: 4.396 min
 Delta R.T.: 0.000 min
 Response: 67357843
 Conc: 25.50 ng/ml

Instrument :
 ECD_P
 ClientSampleId :
 AR1660ICC250



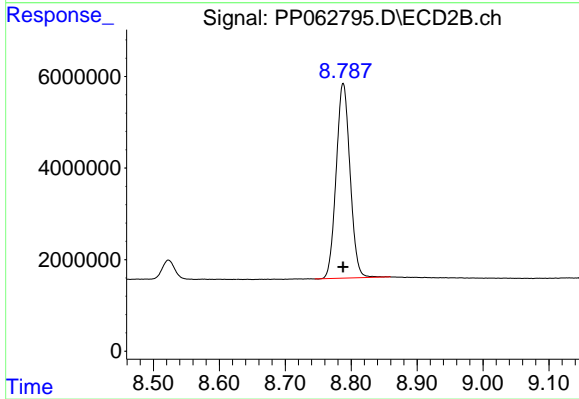
#1 Tetrachloro-m-xylene

R.T.: 3.682 min
 Delta R.T.: 0.000 min
 Response: 91027002
 Conc: 25.67 ng/ml



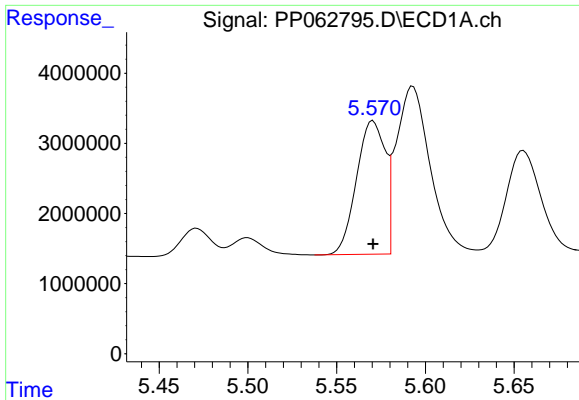
#2 Decachlorobiphenyl

R.T.: 10.159 min
 Delta R.T.: 0.000 min
 Response: 41482812
 Conc: 26.44 ng/ml



#2 Decachlorobiphenyl

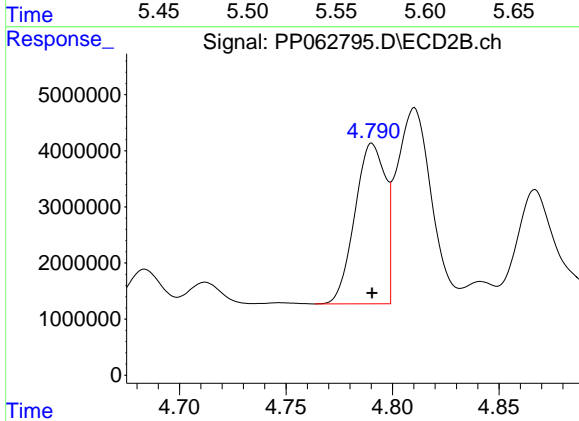
R.T.: 8.788 min
 Delta R.T.: 0.000 min
 Response: 62186231
 Conc: 26.93 ng/ml



#3 AR-1016-1

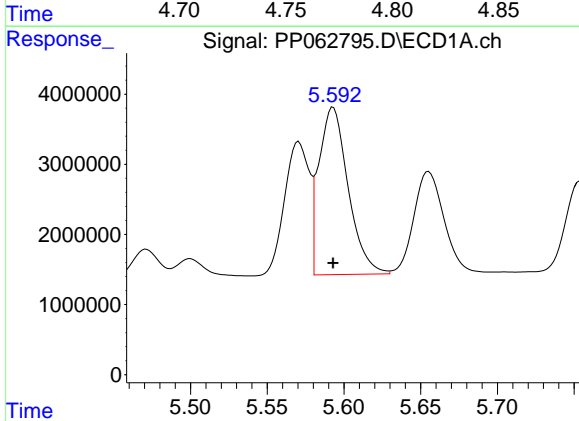
R.T.: 5.571 min
 Delta R.T.: 0.000 min
 Response: 21337413
 Conc: 266.95 ng/ml

Instrument :
 ECD_P
 ClientSampleId :
 AR1660ICC250



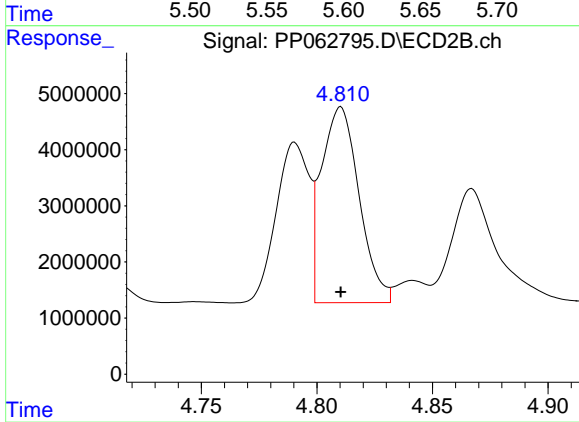
#3 AR-1016-1

R.T.: 4.790 min
 Delta R.T.: 0.000 min
 Response: 28430264
 Conc: 270.10 ng/ml



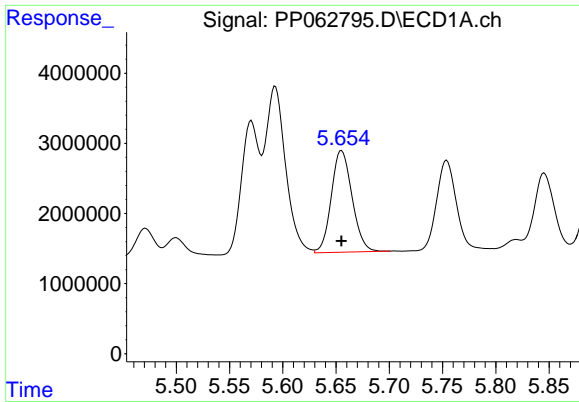
#4 AR-1016-2

R.T.: 5.593 min
 Delta R.T.: 0.000 min
 Response: 31707719
 Conc: 265.96 ng/ml



#4 AR-1016-2

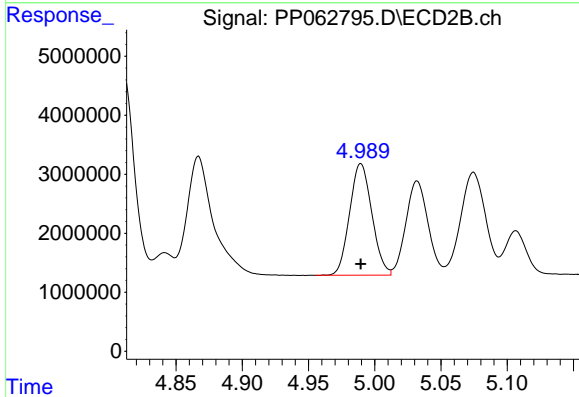
R.T.: 4.810 min
 Delta R.T.: 0.000 min
 Response: 39555610
 Conc: 266.08 ng/ml



#5 AR-1016-3

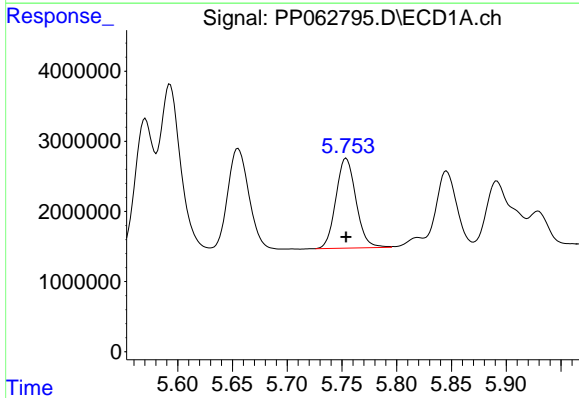
R.T.: 5.655 min
 Delta R.T.: 0.000 min
 Response: 19666435
 Conc: 269.67 ng/ml

Instrument :
 ECD_P
 ClientSampleId :
 AR1660ICC250



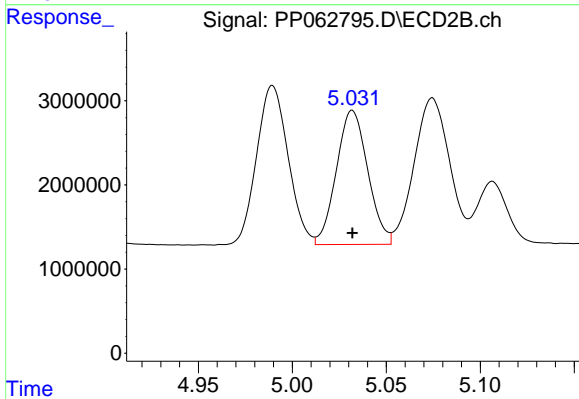
#5 AR-1016-3

R.T.: 4.989 min
 Delta R.T.: 0.000 min
 Response: 22107811
 Conc: 271.38 ng/ml



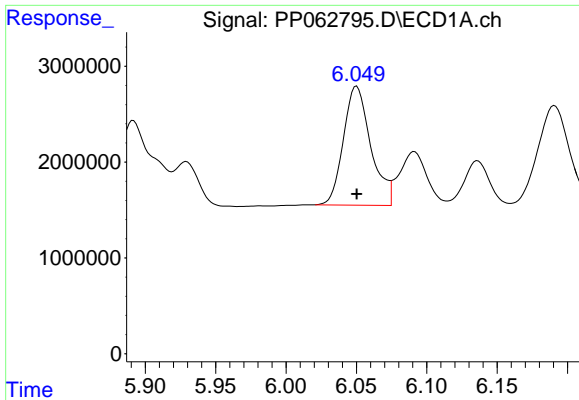
#6 AR-1016-4

R.T.: 5.754 min
 Delta R.T.: 0.000 min
 Response: 16350947
 Conc: 269.48 ng/ml



#6 AR-1016-4

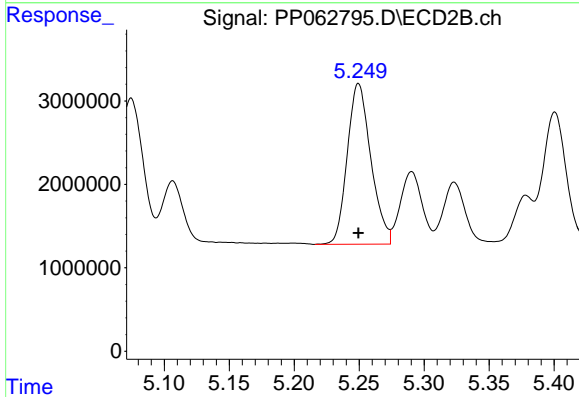
R.T.: 5.032 min
 Delta R.T.: 0.000 min
 Response: 18520119
 Conc: 278.39 ng/ml



#7 AR-1016-5

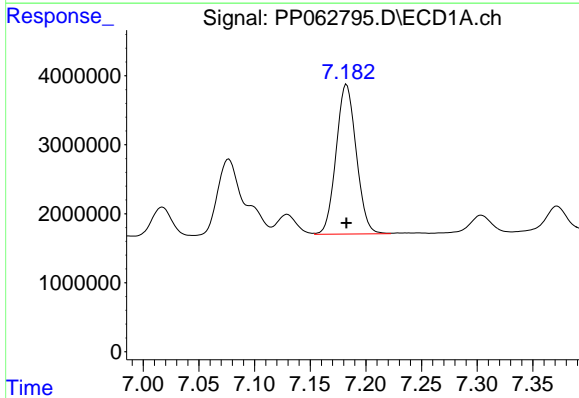
R.T.: 6.050 min
 Delta R.T.: 0.000 min
 Response: 16826032
 Conc: 273.16 ng/ml

Instrument :
 ECD_P
 ClientSampleId :
 AR1660ICC250



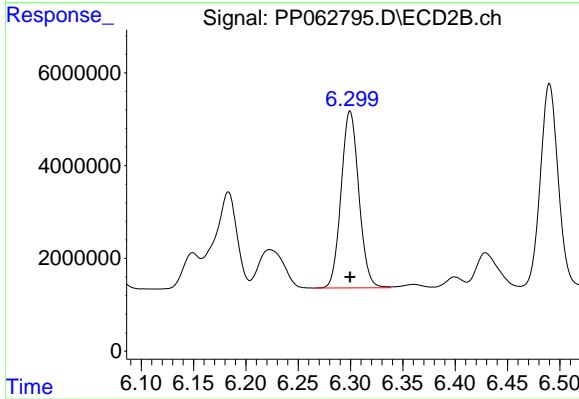
#7 AR-1016-5

R.T.: 5.250 min
 Delta R.T.: 0.000 min
 Response: 24387865
 Conc: 275.99 ng/ml



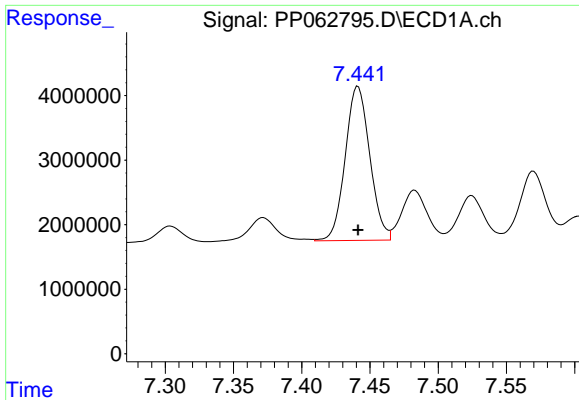
#31 AR-1260-1

R.T.: 7.183 min
 Delta R.T.: 0.000 min
 Response: 27343804
 Conc: 267.94 ng/ml



#31 AR-1260-1

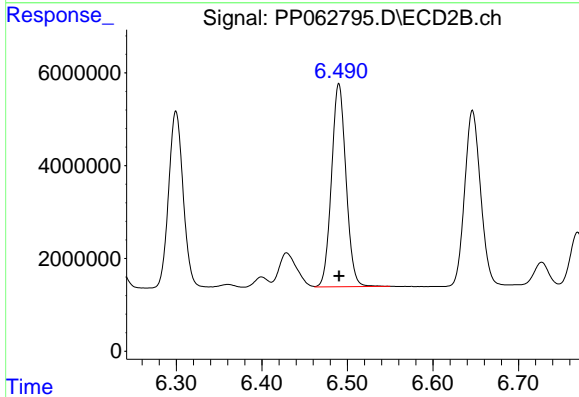
R.T.: 6.300 min
 Delta R.T.: 0.000 min
 Response: 44904467
 Conc: 271.31 ng/ml



#32 AR-1260-2

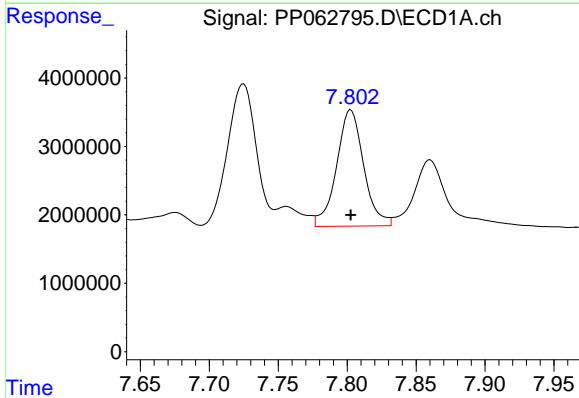
R.T.: 7.441 min
 Delta R.T.: 0.000 min
 Response: 29913357
 Conc: 271.18 ng/ml

Instrument :
 ECD_P
 ClientSampleId :
 AR1660ICC250



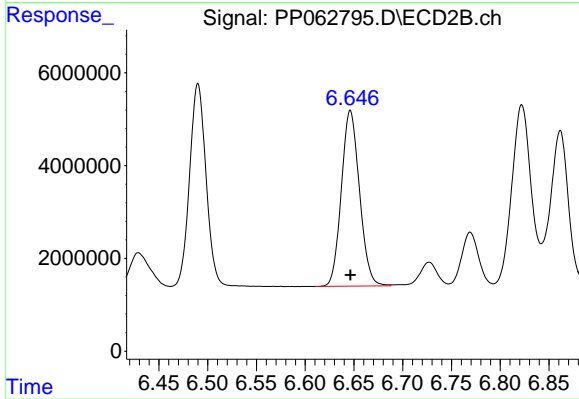
#32 AR-1260-2

R.T.: 6.490 min
 Delta R.T.: 0.000 min
 Response: 51540167
 Conc: 272.01 ng/ml



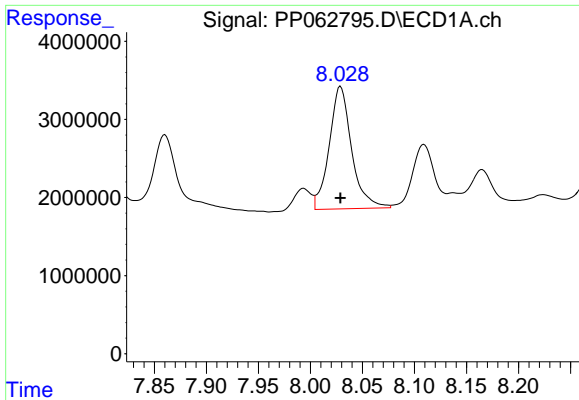
#33 AR-1260-3

R.T.: 7.803 min
 Delta R.T.: 0.000 min
 Response: 23313512
 Conc: 278.85 ng/ml



#33 AR-1260-3

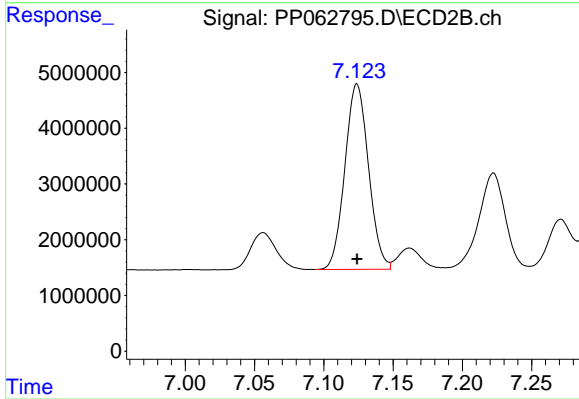
R.T.: 6.646 min
 Delta R.T.: 0.000 min
 Response: 48978498
 Conc: 268.50 ng/ml



#34 AR-1260-4

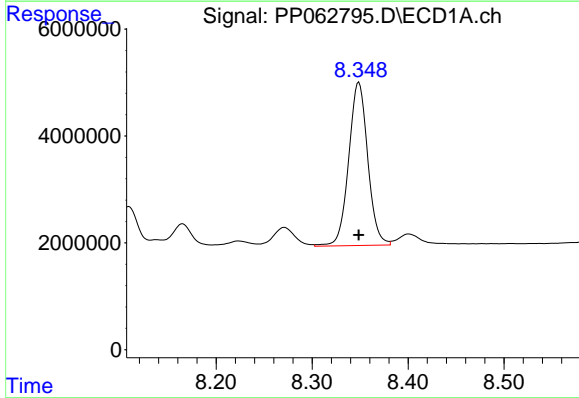
R.T.: 8.029 min
 Delta R.T.: 0.000 min
 Response: 23558877
 Conc: 268.97 ng/ml

Instrument :
 ECD_P
 ClientSampleId :
 AR1660ICC250



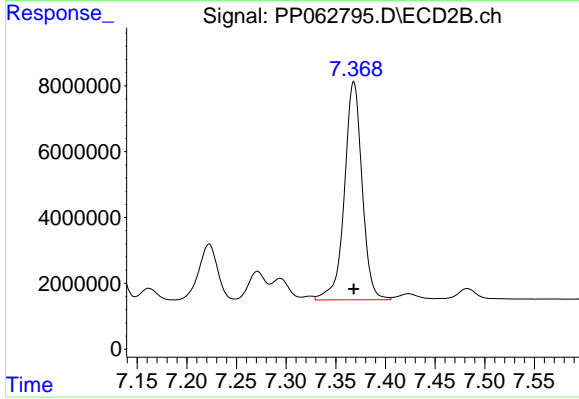
#34 AR-1260-4

R.T.: 7.124 min
 Delta R.T.: 0.000 min
 Response: 39549576
 Conc: 271.17 ng/ml



#35 AR-1260-5

R.T.: 8.349 min
 Delta R.T.: 0.000 min
 Response: 42273788
 Conc: 265.00 ng/ml



#35 AR-1260-5

R.T.: 7.368 min
 Delta R.T.: 0.000 min
 Response: 82353345
 Conc: 260.25 ng/ml