

Data Path : Z:\pestpcbsrv\HPCHEM1\ECD_P\Data\PP011024\
 Data File : PP062817.D
 Signal(s) : Signal #1: ECD1A.ch Signal #2: ECD2B.ch
 Acq On : 11 Jan 2024 00:35
 Operator : YP\AJ
 Sample : AR1268ICC500
 Misc :
 ALS Vial : 28 Sample Multiplier: 1

Instrument :
 ECD_P
ClientSampleId :
 AR1268ICC500

Integration File signal 1: autoint1.e
 Integration File signal 2: autoint2.e
 Quant Time: Jan 11 02:00:49 2024
 Quant Method : Z:\pestpcbsrv\HPCHEM1\ECD_P\methods\PP011024.M
 Quant Title : GC EXTRACTABLES
 QLast Update : Thu Jan 11 02:00:33 2024
 Response via : Initial Calibration
 Integrator: ChemStation

Volume Inj. : 2 µl
 Signal #1 Phase : ZB-MR1 Signal #2 Phase: ZB-MR2
 Signal #1 Info : 30Mx0.32mmx 0.50µ Signal #2 Info : 30M x 0.32mm x 0.25µm

Compound	RT#1	RT#2	Resp#1	Resp#2	ng/ml	ng/ml

System Monitoring Compounds						
1) SA Tetrachlo...	4.396	3.681	131.2E6	176.8E6	50.000	50.000
2) SA Decachlor...	10.157	8.787	140.7E6	203.9E6	50.000	50.000
Target Compounds						
41) L9 AR-1268-1	8.656	7.653	111.9E6	192.0E6	500.000	500.000
42) L9 AR-1268-2	8.750	7.718	101.0E6	176.3E6	500.000	500.000
43) L9 AR-1268-3	8.978	7.928	90026034	154.8E6	500.000	500.000
44) L9 AR-1268-4	9.403	8.221	38262469	59991899	500.000	500.000
45) L9 AR-1268-5	9.819	8.521	274.9E6	421.1E6	500.000	500.000

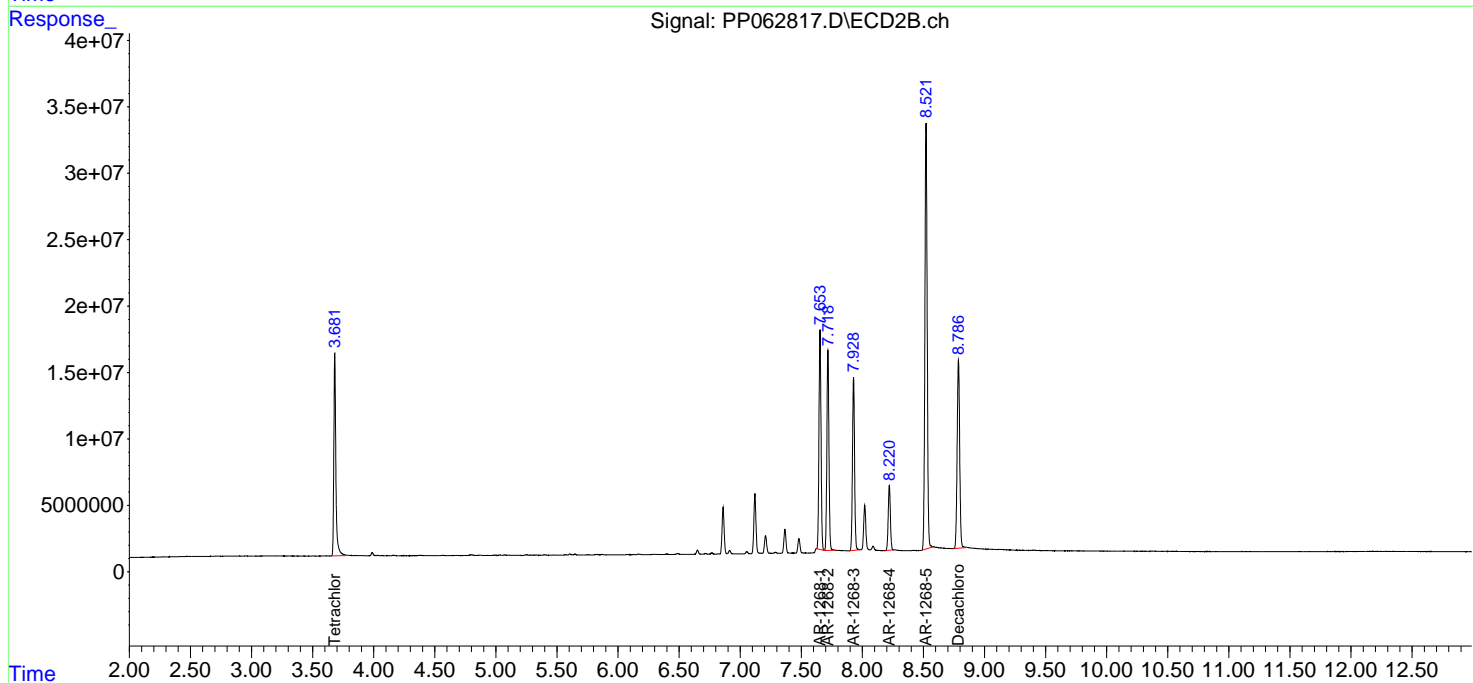
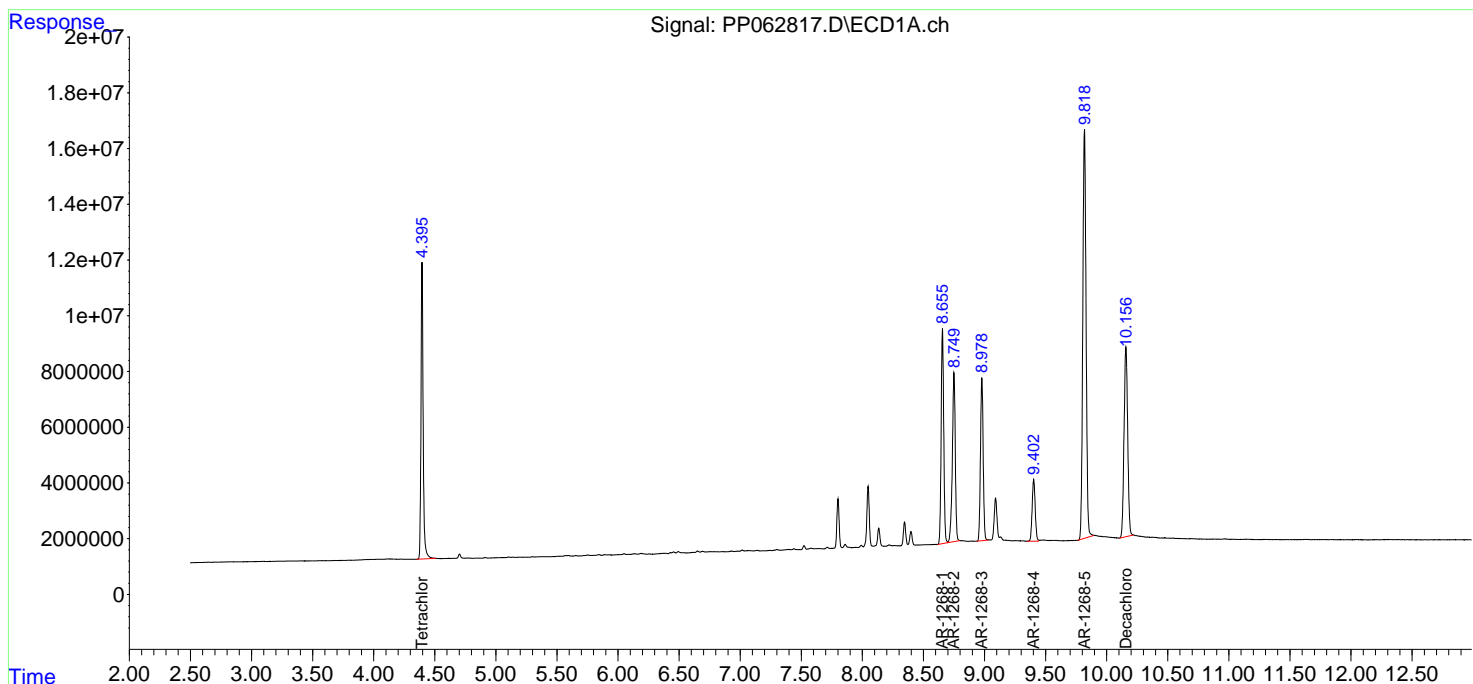
(f)=RT Delta > 1/2 Window (#)=Amounts differ by > 25% (m)=manual int.

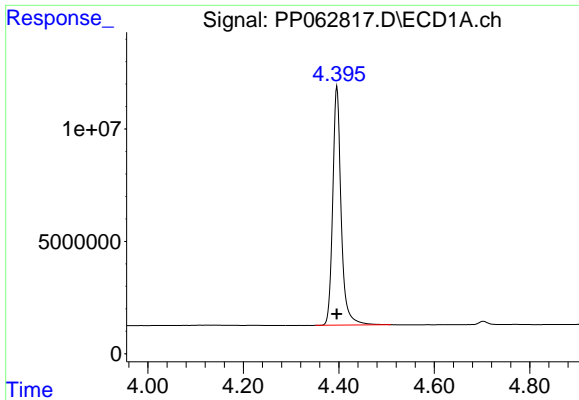
Data Path : Z:\pestpcbsrv\HPCHEM1\ECD_P\Data\PP011024\
 Data File : PP062817.D
 Signal(s) : Signal #1: ECD1A.ch Signal #2: ECD2B.ch
 Acq On : 11 Jan 2024 00:35
 Operator : YP\AJ
 Sample : AR1268ICC500
 Misc :
 ALS Vial : 28 Sample Multiplier: 1

Instrument :
 ECD_P
 ClientSampleId :
 AR1268ICC500

Integration File signal 1: autoint1.e
 Integration File signal 2: autoint2.e
 Quant Time: Jan 11 02:00:49 2024
 Quant Method : Z:\pestpcbsrv\HPCHEM1\ECD_P\methods\PP011024.M
 Quant Title : GC EXTRACTABLES
 QLast Update : Thu Jan 11 02:00:33 2024
 Response via : Initial Calibration
 Integrator: ChemStation

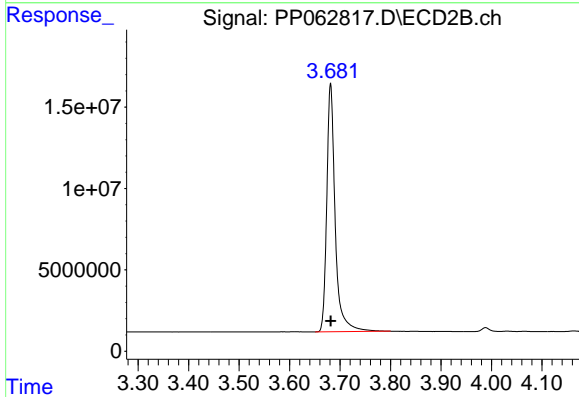
Volume Inj. : 2 µl
 Signal #1 Phase : ZB-MR1 Signal #2 Phase: ZB-MR2
 Signal #1 Info : 30Mx0.32mmx 0.50µ Signal #2 Info : 30M x 0.32mm x 0.25µm



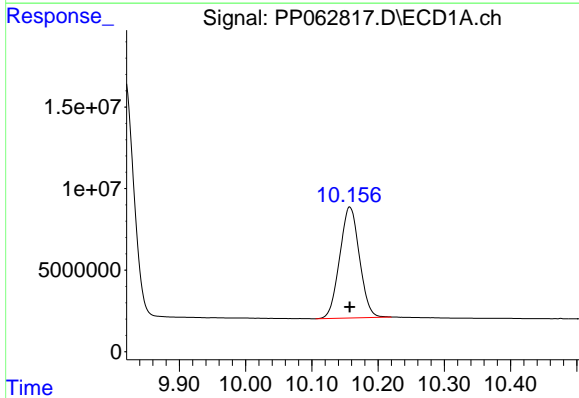


#1 Tetrachloro-m-xylene
 R.T.: 4.396 min
 Delta R.T.: 0.000 min
 Response: 131220198
 Conc: 50.00 ng/ml

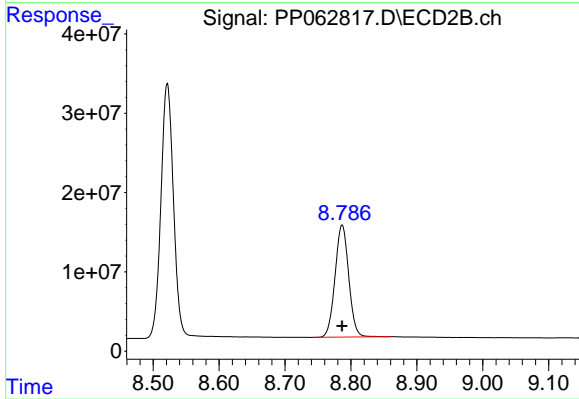
Instrument :
 ECD_P
 ClientSampleId :
 AR1268ICC500



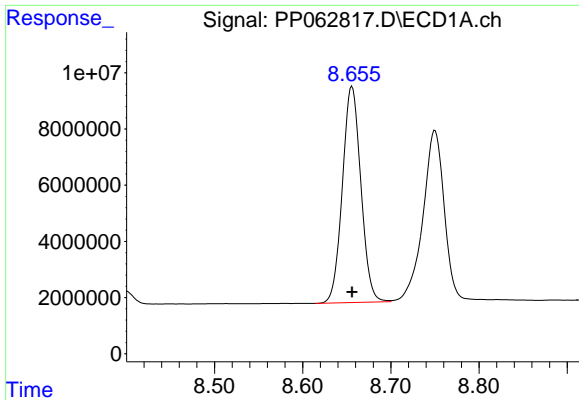
#1 Tetrachloro-m-xylene
 R.T.: 3.681 min
 Delta R.T.: 0.000 min
 Response: 176812478
 Conc: 50.00 ng/ml



#2 Decachlorobiphenyl
 R.T.: 10.157 min
 Delta R.T.: 0.000 min
 Response: 140733939
 Conc: 50.00 ng/ml



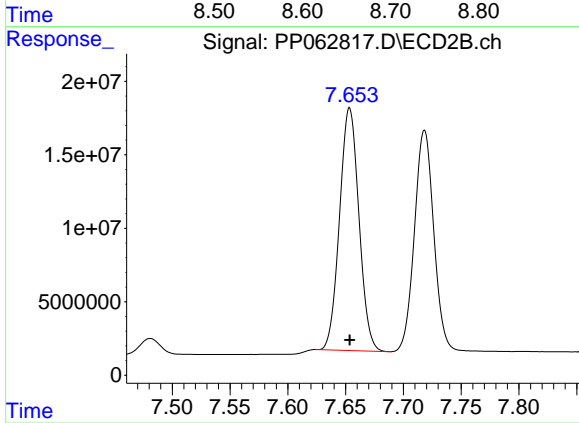
#2 Decachlorobiphenyl
 R.T.: 8.787 min
 Delta R.T.: 0.000 min
 Response: 203878017
 Conc: 50.00 ng/ml



#41 AR-1268-1

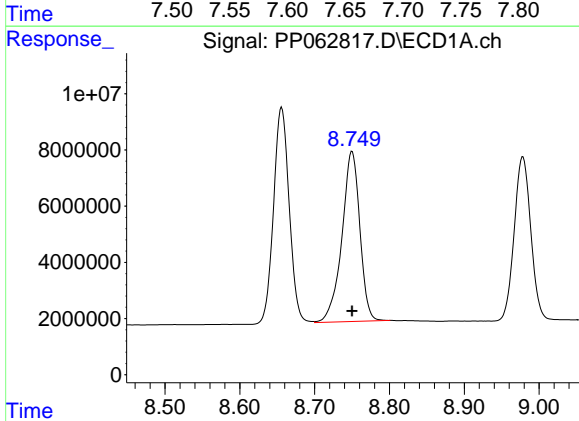
R.T.: 8.656 min
Delta R.T.: 0.000 min
Response: 111916317
Conc: 500.00 ng/ml

Instrument :
ECD_P
ClientSampleId :
AR1268ICC500



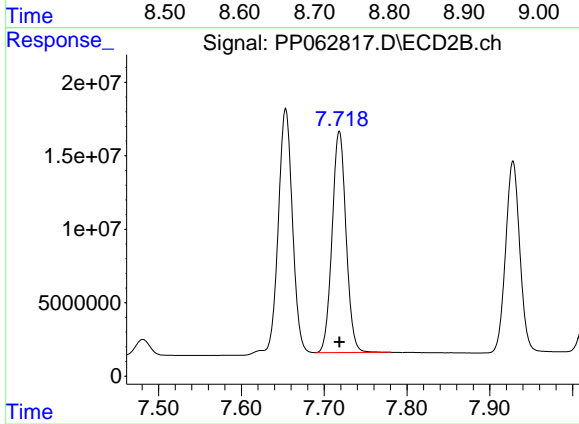
#41 AR-1268-1

R.T.: 7.653 min
Delta R.T.: 0.000 min
Response: 191976367
Conc: 500.00 ng/ml



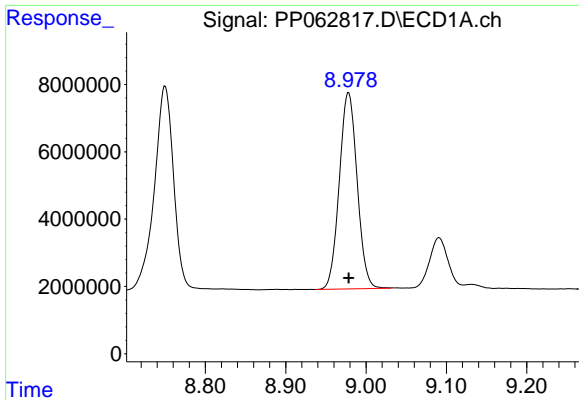
#42 AR-1268-2

R.T.: 8.750 min
Delta R.T.: 0.000 min
Response: 100980192
Conc: 500.00 ng/ml



#42 AR-1268-2

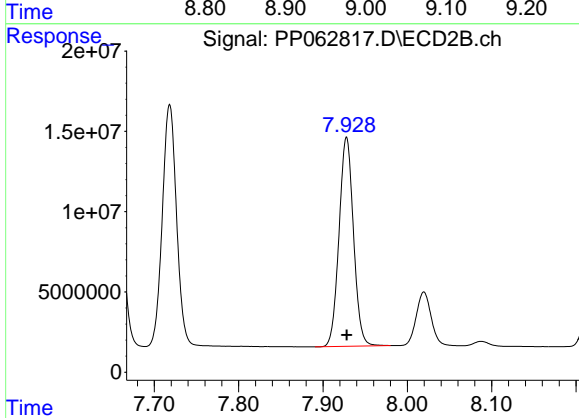
R.T.: 7.718 min
Delta R.T.: 0.000 min
Response: 176260723
Conc: 500.00 ng/ml



#43 AR-1268-3

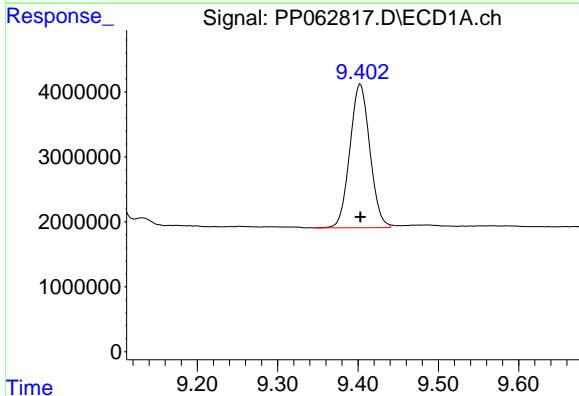
R.T.: 8.978 min
Delta R.T.: 0.000 min
Response: 90026034
Conc: 500.00 ng/ml

Instrument :
ECD_P
ClientSampleId :
AR1268ICC500



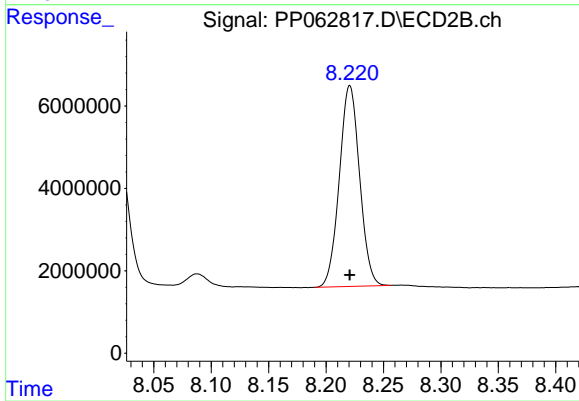
#43 AR-1268-3

R.T.: 7.928 min
Delta R.T.: 0.000 min
Response: 154752525
Conc: 500.00 ng/ml



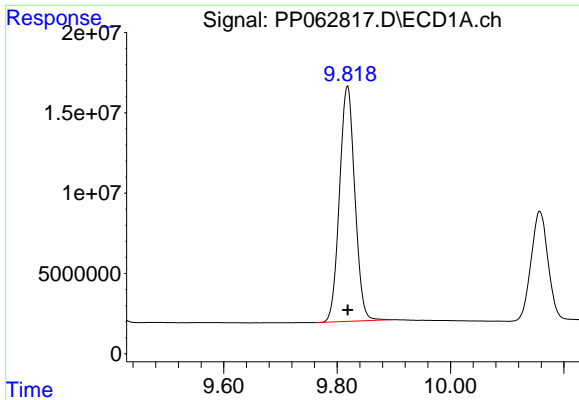
#44 AR-1268-4

R.T.: 9.403 min
Delta R.T.: 0.000 min
Response: 38262469
Conc: 500.00 ng/ml



#44 AR-1268-4

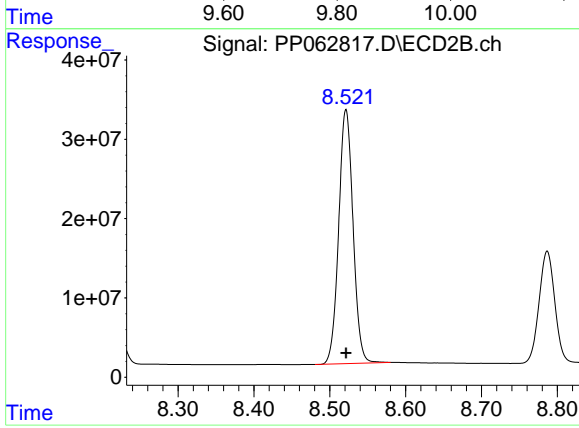
R.T.: 8.221 min
Delta R.T.: 0.000 min
Response: 59991899
Conc: 500.00 ng/ml



#45 AR-1268-5

R.T.: 9.819 min
 Delta R.T.: 0.000 min
 Response: 274944414
 Conc: 500.00 ng/ml

Instrument :
 ECD_P
 ClientSampleId :
 AR1268ICC500



#45 AR-1268-5

R.T.: 8.521 min
 Delta R.T.: 0.000 min
 Response: 421111114
 Conc: 500.00 ng/ml