

Data Path : Z:\pestpcbsrv\HPCHEM1\ECD\_P\Data\PP011119\  
 Data File : PP028772.D  
 Signal(s) : Signal #1: ECD1A.CH Signal #2: ECD2B.CH  
 Acq On : 11 Jan 2019 19:01  
 Operator : EI\MA  
 Sample : K1083-03MS  
 Misc : hexane  
 ALS Vial : 19 Sample Multiplier: 1

Instrument :  
 ECD\_P  
 ClientSampleId :

Integration File signal 1: autoint1.e  
 Integration File signal 2: autoint2.e  
 Quant Time: Jan 12 03:42:32 2019  
 Quant Method : Z:\pestpcbsrv\HPCHEM1\ECD\_P\methods\PP010319.M  
 Quant Title : 8080.M  
 QLast Update : Fri Jan 04 01:40:06 2019  
 Response via : Initial Calibration  
 Integrator: ChemStation 6890 Scale Mode: Large solvent peaks clipped

Volume Inj. : 2 µl  
 Signal #1 Phase : ZB-CLPesticides-1 Signal #2 Phase: ZB-CLPesticides-2  
 Signal #1 Info : 30M x 0.32mm x0.5 Signal #2 Info : 30M x 0.32mm x 0.25µm

	Compound	RT#1	RT#2	Resp#1	Resp#2	ng/ml	ng/ml
-----							
System Monitoring Compounds							
4) S	2,4-DCAA	12.138	12.249	79096084	115.6E6	307.641	264.894
Target Compounds							
1) T	Dalapon	3.363	3.031	225.6E6	219.5E6	368.933	375.503
2) T	3,5-DICHL...	10.549	10.338	164.7E6	187.0E6	329.653	362.829
5) T	DICAMBA	12.460	12.560	532.1E6	632.4E6	339.894	366.193
6) T	MCPP	12.806	12.749	36774887	58359947	72.415	63.098
7) T	MCPA	13.043	13.138	162.7E6	84804789	203.326	57.947 #
8) T	DICHLORPROP	13.657	13.675	175.3E6	238.2E6	541.822	548.634
9) T	2,4-D	14.007	14.160	220.2E6	322.3E6	717.311	660.789
10) T	Pentachlo...	14.430	14.777	2225.1E6	2036.0E6	283.413	313.133
11) T	2,4,5-TP ...	15.289	15.339	1474.3E6	2601.0E6	518.745	1052.971 #
12) T	2,4,5-T	15.679	15.988	1399.7E6	691.0E6	554.967	318.538 #
13) T	2,4-DB	16.443	16.586	131.4E6	163.6E6	725.721	671.124
14) T	DINOSEB	17.936	16.981	485.7E6	414.8E6	221.930	236.373
15) T	Picloram	17.699	18.362	1606.8E6	1500.3E6	384.045	393.028
16) T	DCPA	18.299	18.242	1190.3E6	1035.3E6	288.306	317.008
-----							

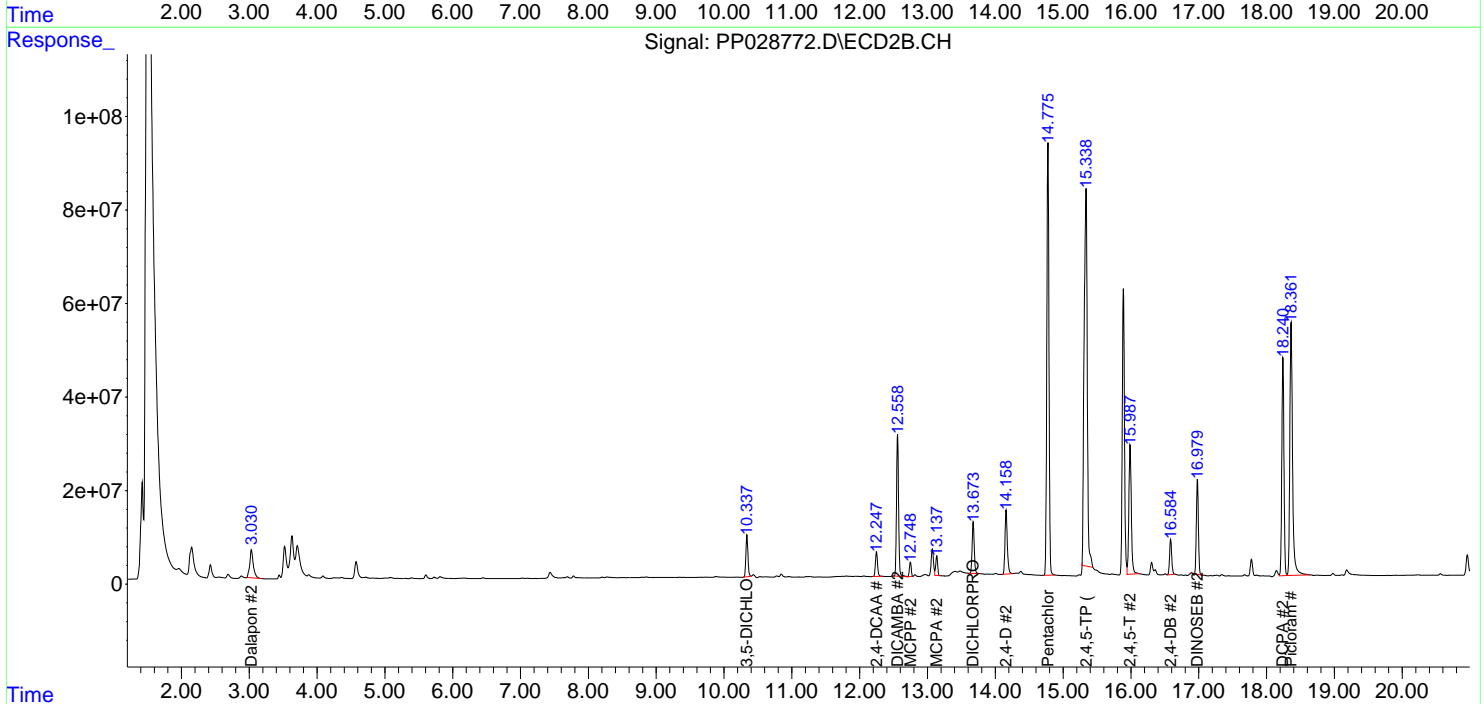
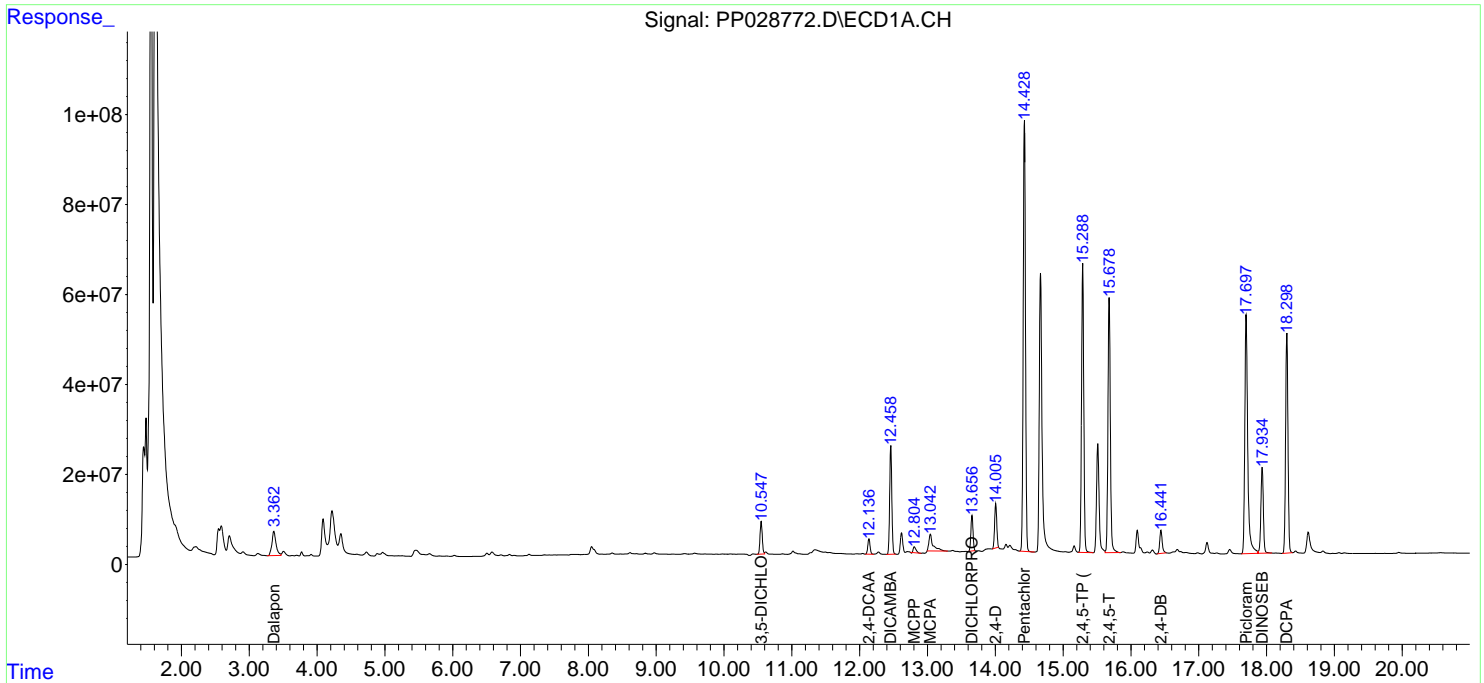
(f)=RT Delta > 1/2 Window (#)=Amounts differ by > 25% (m)=manual int.

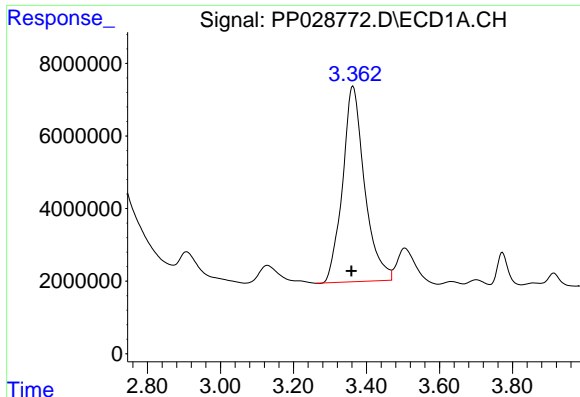
Data Path : Z:\pestpcbsrv\HPCHEM1\ECD\_P\Data\PP011119\  
 Data File : PP028772.D  
 Signal(s) : Signal #1: ECD1A.CH Signal #2: ECD2B.CH  
 Acq On : 11 Jan 2019 19:01  
 Operator : EI\MA  
 Sample : K1083-03MS  
 Misc : hexane  
 ALS Vial : 19 Sample Multiplier: 1

Instrument :  
 ECD\_P  
 ClientSampled :

Integration File signal 1: autoint1.e  
 Integration File signal 2: autoint2.e  
 Quant Time: Jan 12 03:42:32 2019  
 Quant Method : Z:\pestpcbsrv\HPCHEM1\ECD\_P\methods\PP010319.M  
 Quant Title : 8080.M  
 QLast Update : Fri Jan 04 01:40:06 2019  
 Response via : Initial Calibration  
 Integrator: ChemStation 6890 Scale Mode: Large solvent peaks clipped

Volume Inj. : 2 µl  
 Signal #1 Phase : ZB-CLPesticides-1 Signal #2 Phase: ZB-CLPesticides-2  
 Signal #1 Info : 30M x 0.32mm x0.5 Signal #2 Info : 30M x 0.32mm x 0.25µm

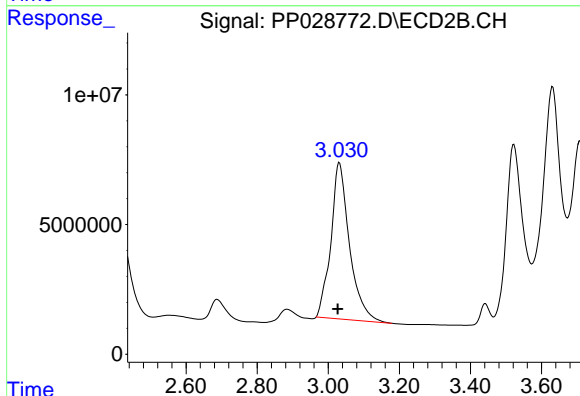




#1 Dalapon

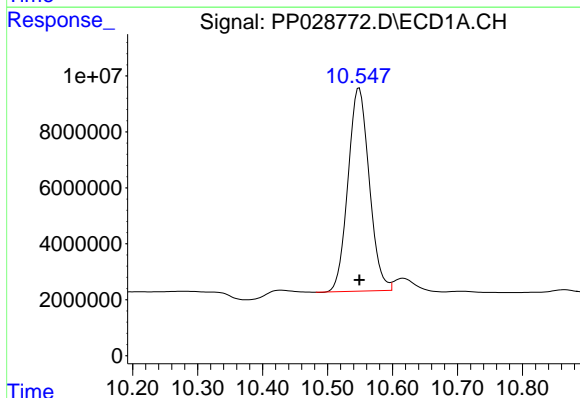
R.T.: 3.363 min  
Delta R.T.: 0.004 min  
Response: 225608452  
Conc: 368.93 ng/ml

Instrument :  
ECD\_P  
ClientSampleId :



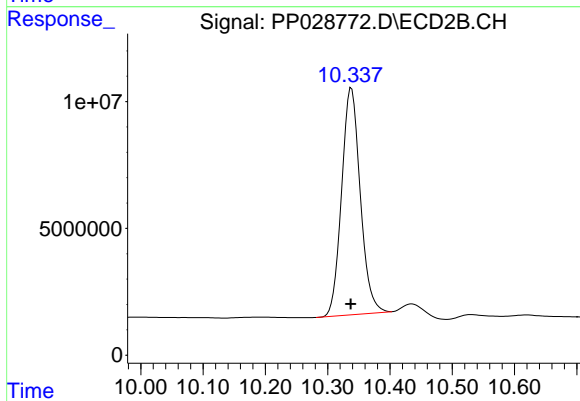
#1 Dalapon

R.T.: 3.031 min  
Delta R.T.: 0.005 min  
Response: 219514809  
Conc: 375.50 ng/ml



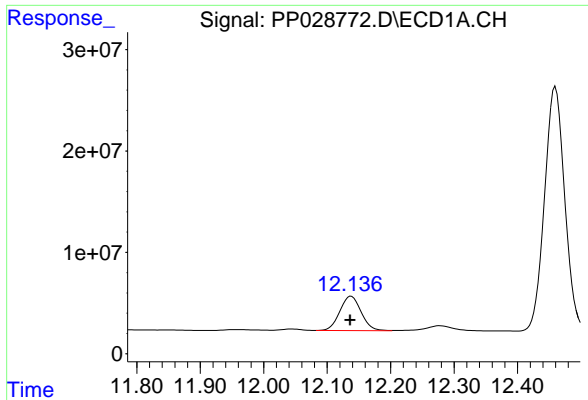
#2 3,5-DICHLOROBENZOIC ACID

R.T.: 10.549 min  
Delta R.T.: 0.000 min  
Response: 164738311  
Conc: 329.65 ng/ml



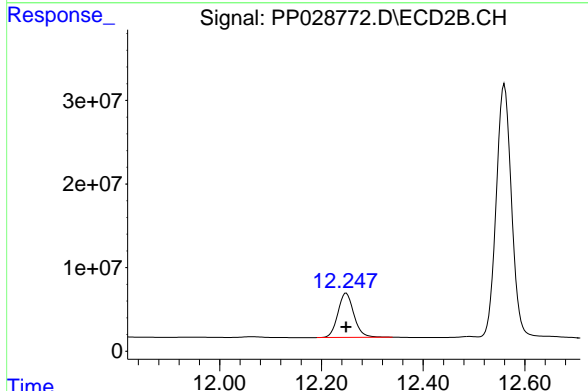
#2 3,5-DICHLOROBENZOIC ACID

R.T.: 10.338 min  
Delta R.T.: 0.001 min  
Response: 186960660  
Conc: 362.83 ng/ml

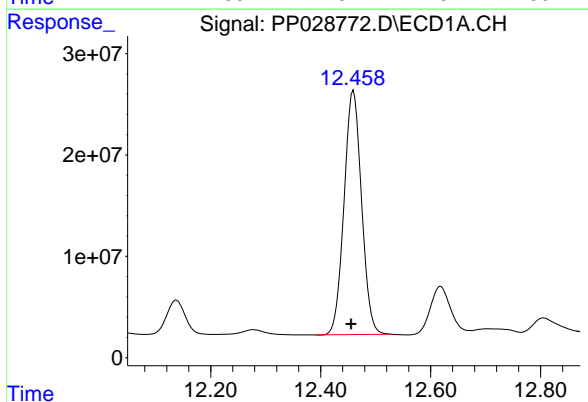


#4 2,4-DCAA  
 R.T.: 12.138 min  
 Delta R.T.: 0.002 min  
 Response: 79096084  
 Conc: 307.64 ng/ml

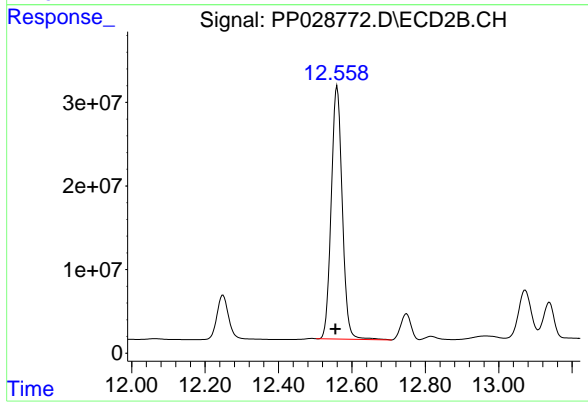
Instrument :  
 ECD\_P  
 ClientSampled :



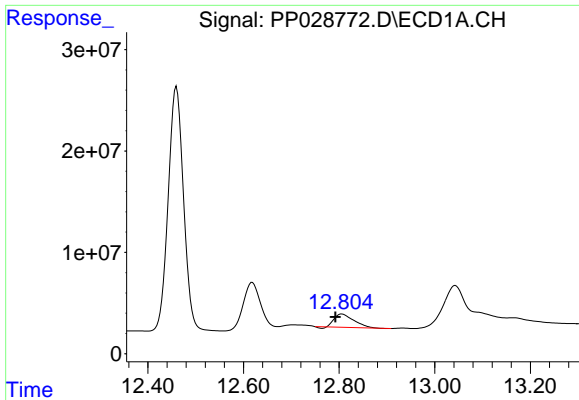
#4 2,4-DCAA  
 R.T.: 12.249 min  
 Delta R.T.: 0.000 min  
 Response: 115647896  
 Conc: 264.89 ng/ml



#5 DICAMBA  
 R.T.: 12.460 min  
 Delta R.T.: 0.004 min  
 Response: 532111727  
 Conc: 339.89 ng/ml

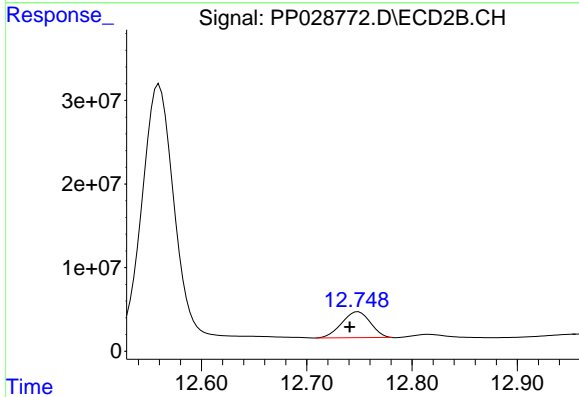


#5 DICAMBA  
 R.T.: 12.560 min  
 Delta R.T.: 0.005 min  
 Response: 632421592  
 Conc: 366.19 ng/ml

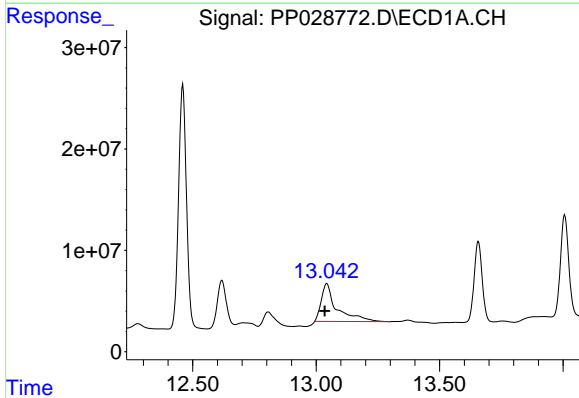


#6 MCPP  
 R.T.: 12.806 min  
 Delta R.T.: 0.014 min  
 Response: 36774887  
 Conc: 72.41 ug/ml

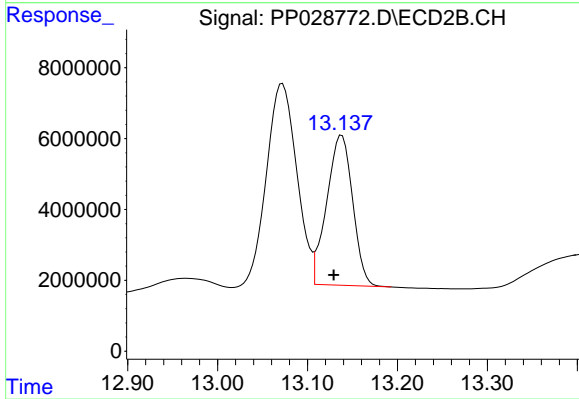
Instrument :  
 ECD\_P  
 ClientSampleId :



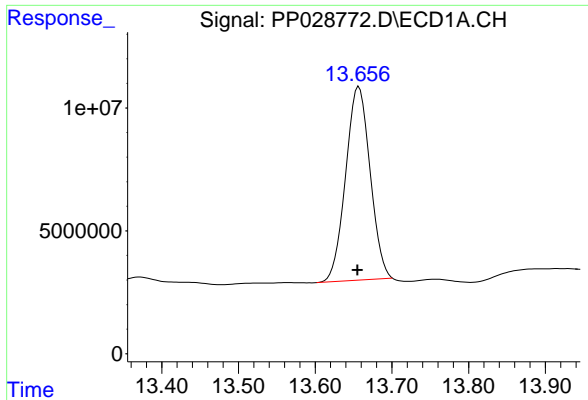
#6 MCPP  
 R.T.: 12.749 min  
 Delta R.T.: 0.008 min  
 Response: 58359947  
 Conc: 63.10 ug/ml



#7 MCPA  
 R.T.: 13.043 min  
 Delta R.T.: 0.008 min  
 Response: 162667059  
 Conc: 203.33 ug/ml



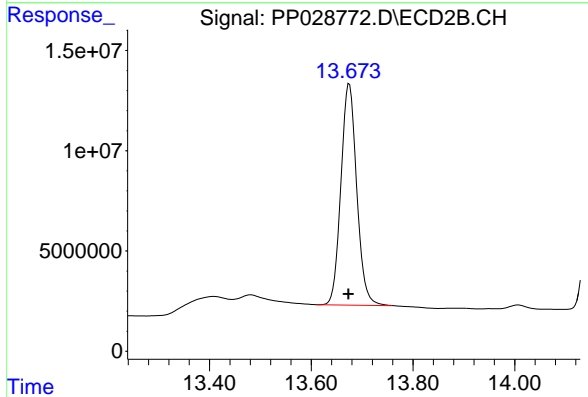
#7 MCPA  
 R.T.: 13.138 min  
 Delta R.T.: 0.009 min  
 Response: 84804789  
 Conc: 57.95 ug/ml



#8 DICHLORPROP

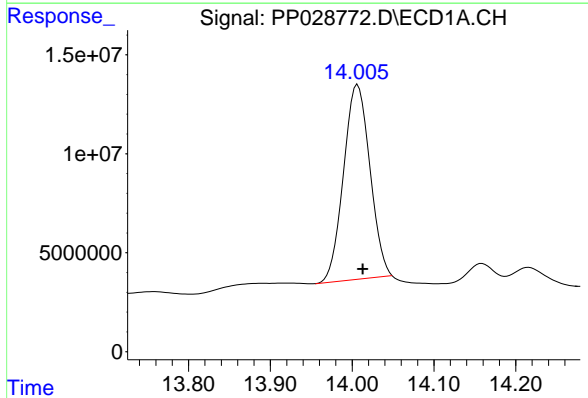
R.T.: 13.657 min  
 Delta R.T.: 0.002 min  
 Response: 175285275  
 Conc: 541.82 ng/ml

Instrument :  
 ECD\_P  
 ClientSampled :



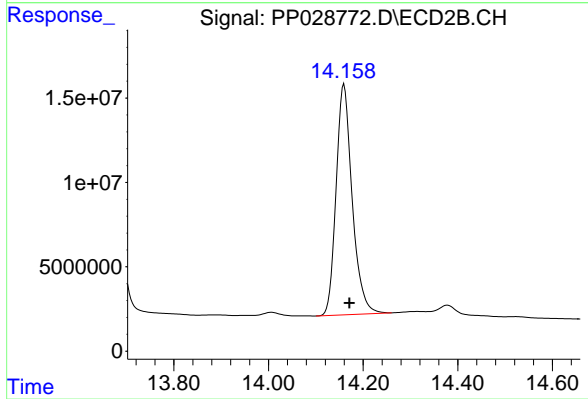
#8 DICHLORPROP

R.T.: 13.675 min  
 Delta R.T.: 0.002 min  
 Response: 238247998  
 Conc: 548.63 ng/ml



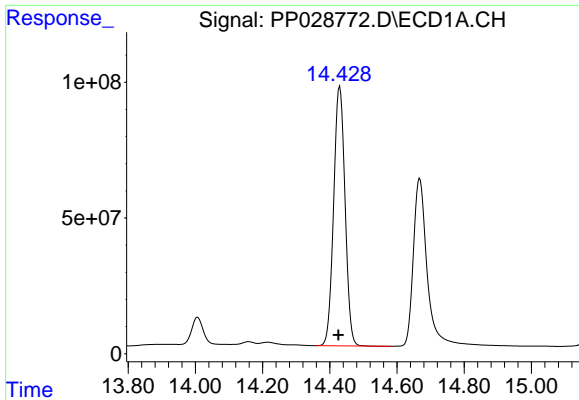
#9 2,4-D

R.T.: 14.007 min  
 Delta R.T.: -0.006 min  
 Response: 220172085  
 Conc: 717.31 ng/ml



#9 2,4-D

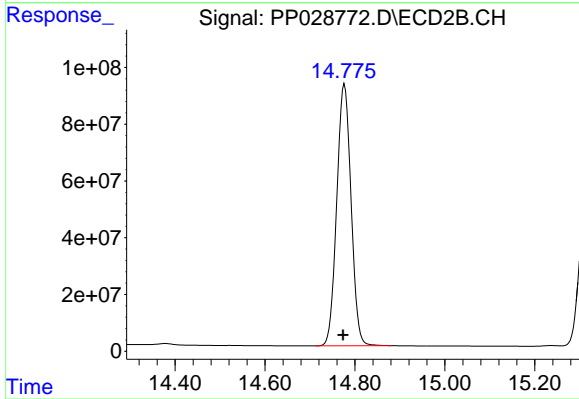
R.T.: 14.160 min  
 Delta R.T.: -0.011 min  
 Response: 322317344  
 Conc: 660.79 ng/ml



#10 Pentachlorophenol

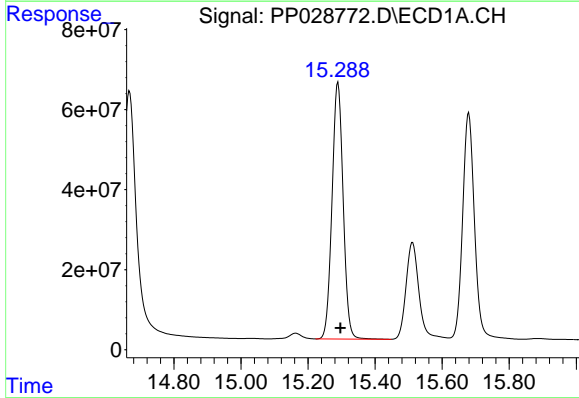
R.T.: 14.430 min  
 Delta R.T.: 0.004 min  
 Response: 2225143660  
 Conc: 283.41 ng/ml

Instrument :  
 ECD\_P  
 ClientSampled :



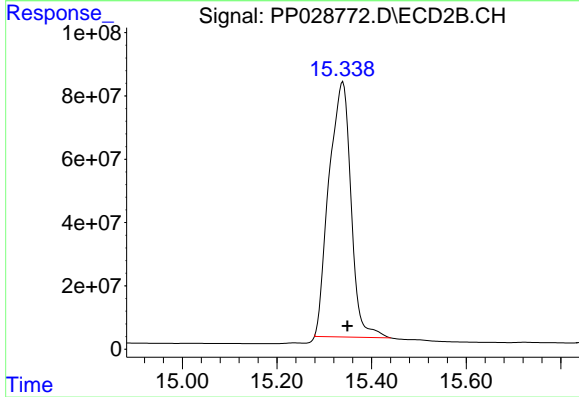
#10 Pentachlorophenol

R.T.: 14.777 min  
 Delta R.T.: 0.003 min  
 Response: 2036000791  
 Conc: 313.13 ng/ml



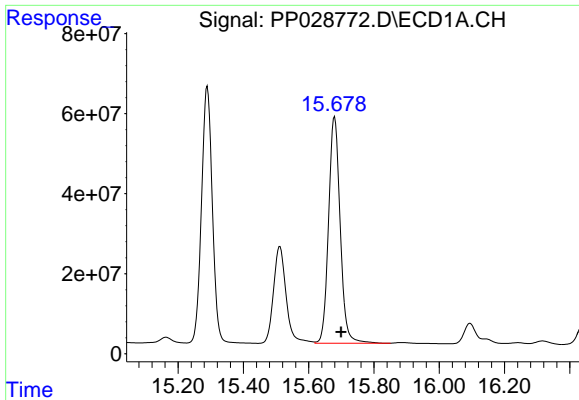
#11 2,4,5-TP (SILVEX)

R.T.: 15.289 min  
 Delta R.T.: -0.007 min  
 Response: 1474258738  
 Conc: 518.75 ng/ml



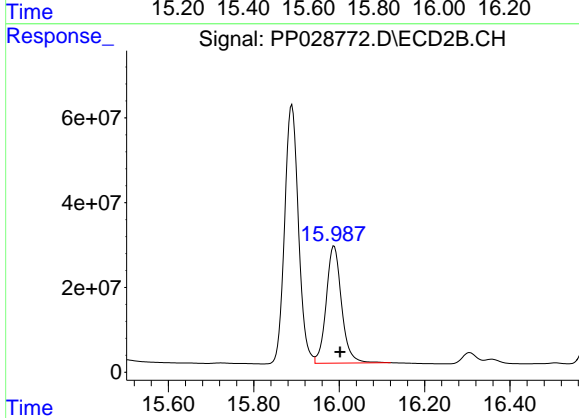
#11 2,4,5-TP (SILVEX)

R.T.: 15.339 min  
 Delta R.T.: -0.010 min  
 Response: 2600977846  
 Conc: 1052.97 ng/ml

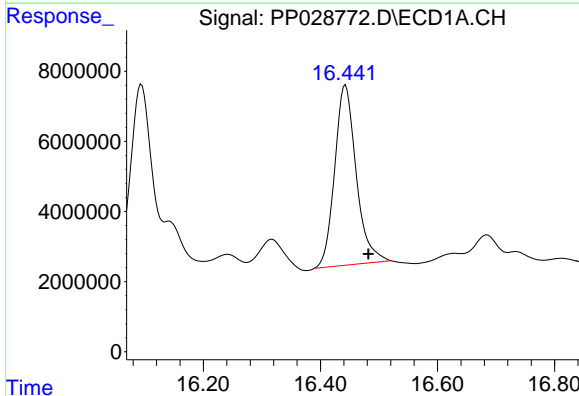


#12 2,4,5-T  
 R.T.: 15.679 min  
 Delta R.T.: -0.020 min  
 Response: 1399691212  
 Conc: 554.97 ng/ml

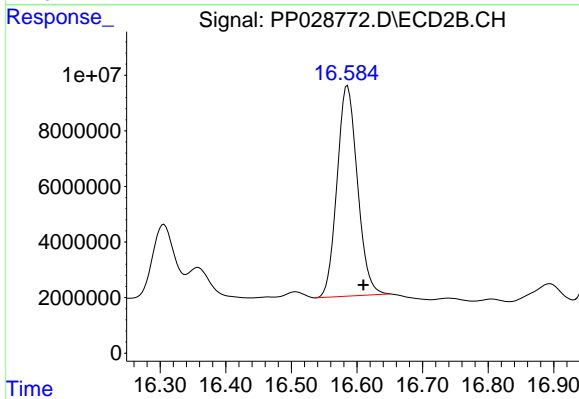
Instrument :  
 ECD\_P  
 ClientSampleId :



#12 2,4,5-T  
 R.T.: 15.988 min  
 Delta R.T.: -0.014 min  
 Response: 690994038  
 Conc: 318.54 ng/ml

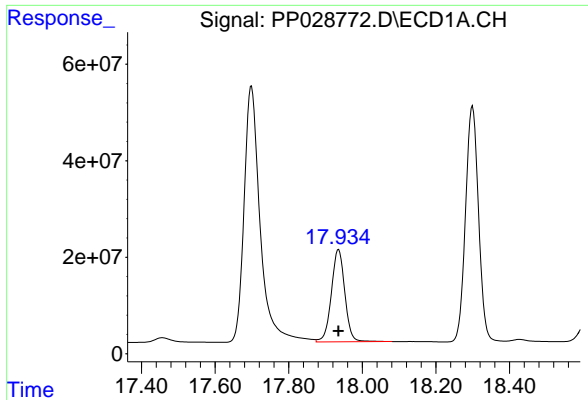


#13 2,4-DB  
 R.T.: 16.443 min  
 Delta R.T.: -0.039 min  
 Response: 131350384  
 Conc: 725.72 ng/ml



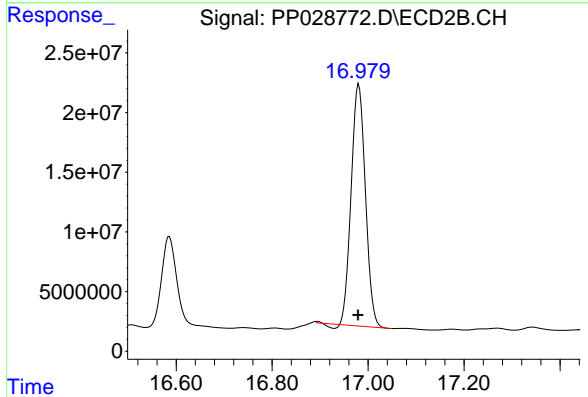
#13 2,4-DB  
 R.T.: 16.586 min  
 Delta R.T.: -0.024 min  
 Response: 163640426  
 Conc: 671.12 ng/ml



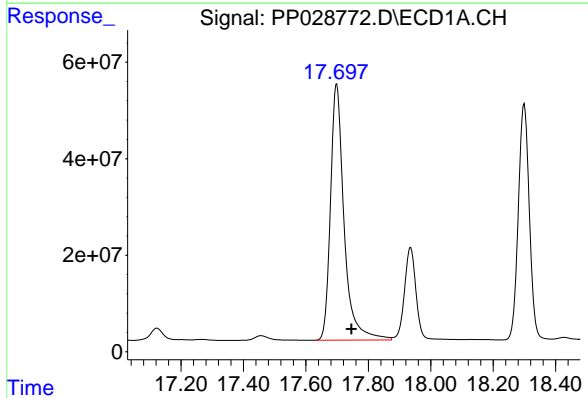


#14 DINOSEB  
 R.T.: 17.936 min  
 Delta R.T.: 0.000 min  
 Response: 485689749  
 Conc: 221.93 ng/ml

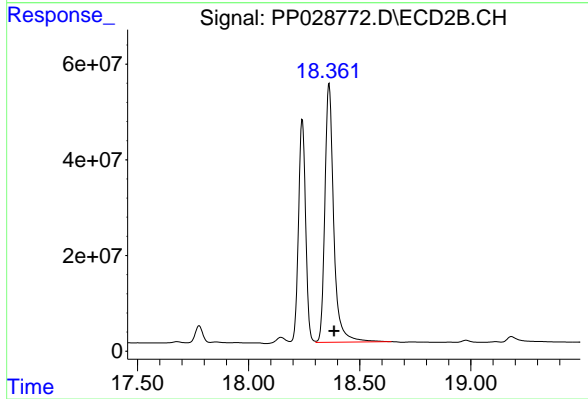
Instrument :  
 ECD\_P  
 ClientSampled :



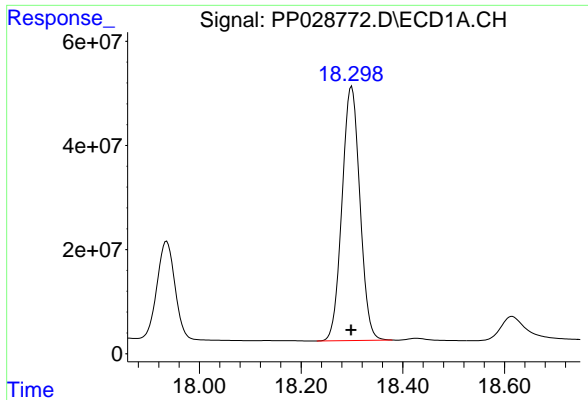
#14 DINOSEB  
 R.T.: 16.981 min  
 Delta R.T.: 0.001 min  
 Response: 414802086  
 Conc: 236.37 ng/ml



#15 Picloram  
 R.T.: 17.699 min  
 Delta R.T.: -0.047 min  
 Response: 1606800137  
 Conc: 384.05 ng/ml



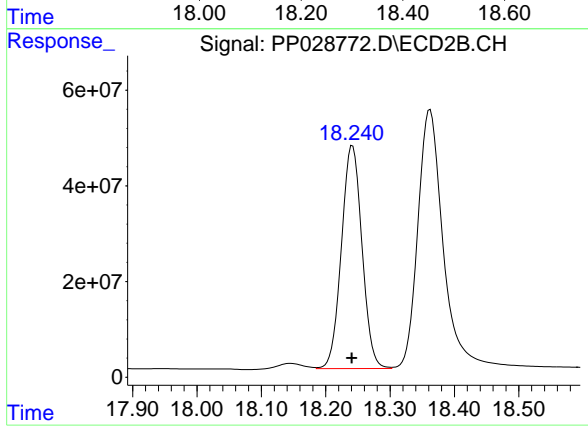
#15 Picloram  
 R.T.: 18.362 min  
 Delta R.T.: -0.022 min  
 Response: 1500309722  
 Conc: 393.03 ng/ml



#16 DCPA

R.T.: 18.299 min  
Delta R.T.: 0.001 min  
Response: 1190327504  
Conc: 288.31 ng/ml

Instrument :  
ECD\_P  
ClientSampleId :



#16 DCPA

R.T.: 18.242 min  
Delta R.T.: 0.002 min  
Response: 1035306569  
Conc: 317.01 ng/ml