

Data Path : Z:\pestpcbsrv\HPCHEM1\ECD_P\Data\PP011123\
 Data File : PP054480.D
 Signal(s) : Signal #1: ECD1A.ch Signal #2: ECD2B.ch
 Acq On : 12 Jan 2023 01:33
 Operator : YP\AJ
 Sample : AR1254CCC500
 Misc :
 ALS Vial : 6 Sample Multiplier: 1

Instrument :
 ECD_P
ClientSampleId :
 AR1254CCC500

Integration File signal 1: autoint1.e
 Integration File signal 2: autoint2.e
 Quant Time: Jan 12 05:00:46 2023
 Quant Method : Z:\pestpcbsrv\HPCHEM1\ECD_P\methods\PP010423.M
 Quant Title : GC EXTRACTABLES
 QLast Update : Thu Jan 05 03:46:53 2023
 Response via : Initial Calibration
 Integrator: ChemStation

Volume Inj. : 2 µl
 Signal #1 Phase : ZB-MR1 Signal #2 Phase: ZB-MR2
 Signal #1 Info : 30Mx0.32mmx 0.50µ Signal #2 Info : 30M x 0.32mm x 0.25µm

Compound	RT#1	RT#2	Resp#1	Resp#2	ng/ml	ng/ml

System Monitoring Compounds						
1) SA Tetrachlo...	4.335	3.585	103.9E6	76889536	51.324	47.669
2) SA Decachlor...	10.093	8.604	61799008	72794046	43.030	51.603
Target Compounds						
26) L6 AR-1254-1	6.364	5.474	28849592	42713375	464.305	498.082
27) L6 AR-1254-2	6.584	5.622	44687940	37536996	476.182	505.274
28) L6 AR-1254-3	6.951	6.026	45302708	58737549	477.242	506.044
29) L6 AR-1254-4	7.238	6.256	32045950	32158108	472.412	510.845
30) L6 AR-1254-5	7.659	6.676	34656912	49774766	455.900	520.560

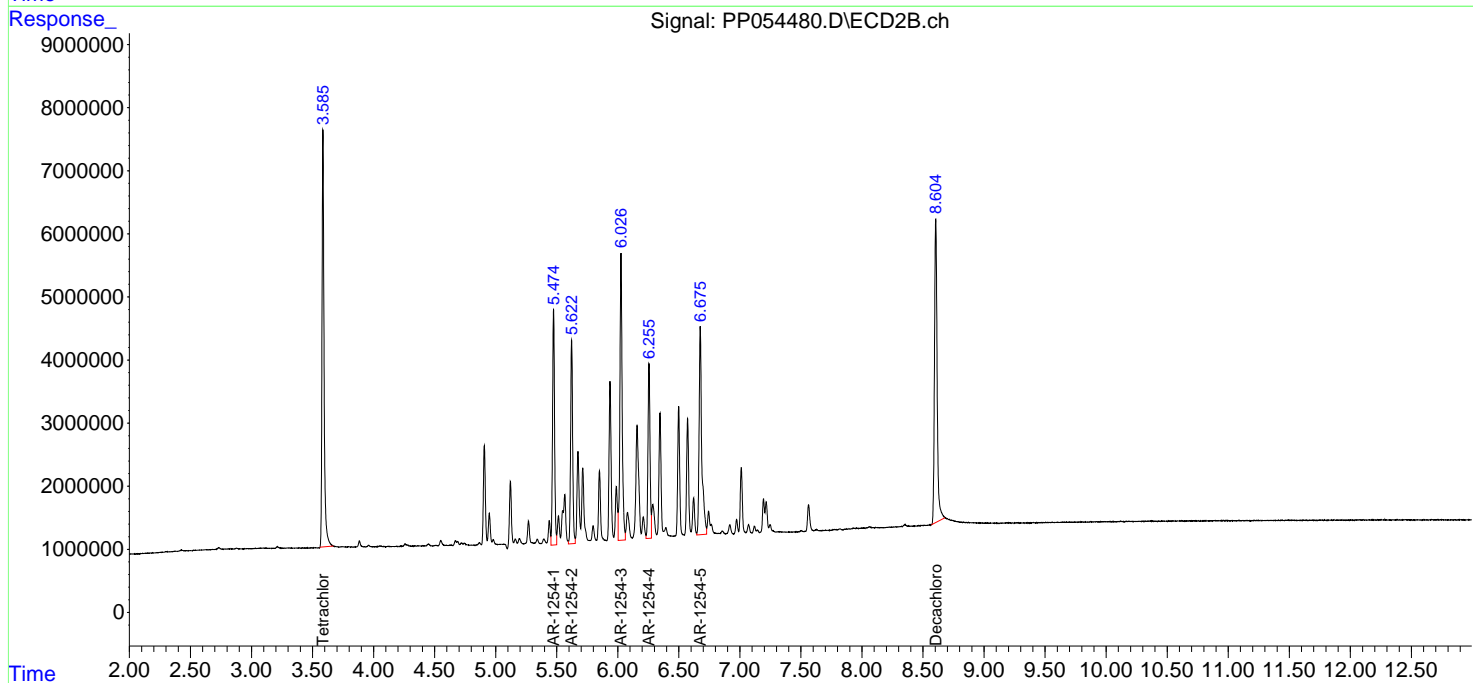
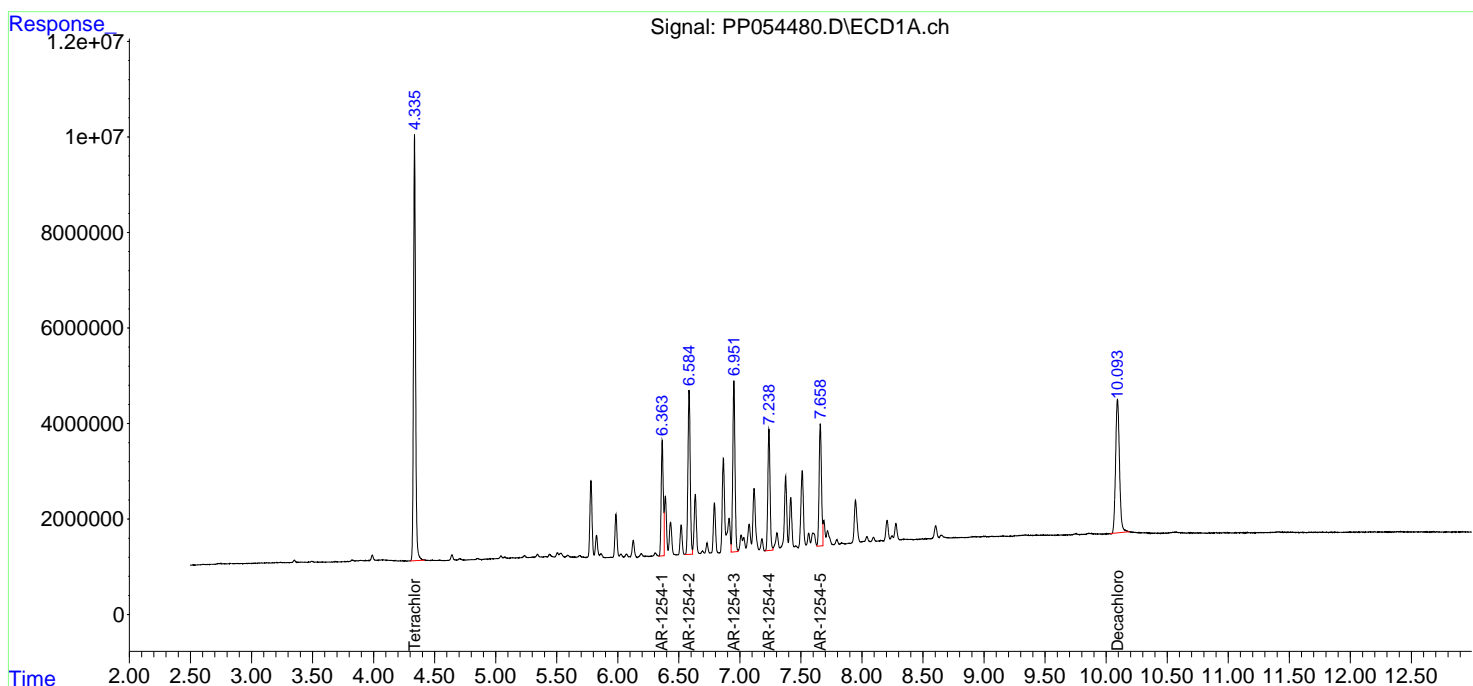
(f)=RT Delta > 1/2 Window (#)=Amounts differ by > 25% (m)=manual int.

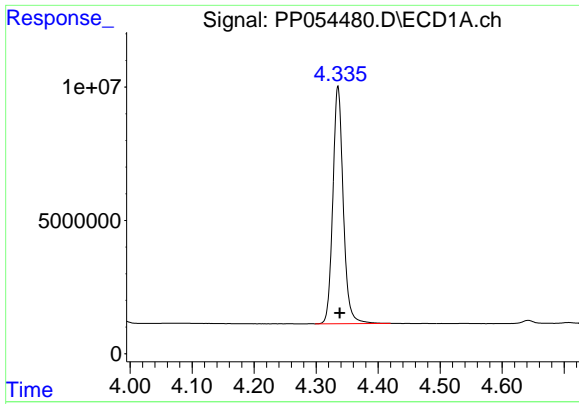
Data Path : Z:\pestpcbsrv\HPCHEM1\ECD_P\Data\PP011123\
 Data File : PP054480.D
 Signal(s) : Signal #1: ECD1A.ch Signal #2: ECD2B.ch
 Acq On : 12 Jan 2023 01:33
 Operator : YP\AJ
 Sample : AR1254CCC500
 Misc :
 ALS Vial : 6 Sample Multiplier: 1

Instrument :
 ECD_P
 ClientSampleId :
 AR1254CCC500

Integration File signal 1: autoint1.e
 Integration File signal 2: autoint2.e
 Quant Time: Jan 12 05:00:46 2023
 Quant Method : Z:\pestpcbsrv\HPCHEM1\ECD_P\methods\PP010423.M
 Quant Title : GC EXTRACTABLES
 QLast Update : Thu Jan 05 03:46:53 2023
 Response via : Initial Calibration
 Integrator: ChemStation

Volume Inj. : 2 µl
 Signal #1 Phase : ZB-MR1 Signal #2 Phase: ZB-MR2
 Signal #1 Info : 30Mx0.32mmx 0.50µ Signal #2 Info : 30M x 0.32mm x 0.25µm

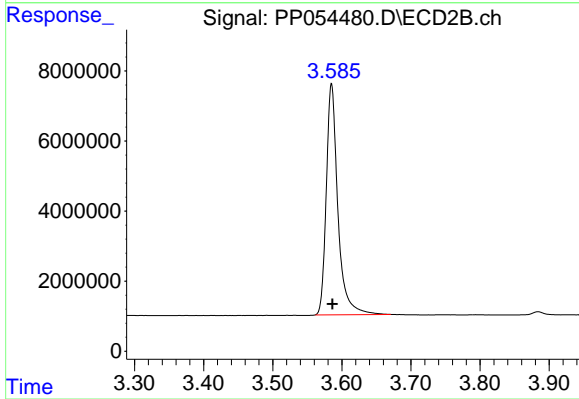




#1 Tetrachloro-m-xylene

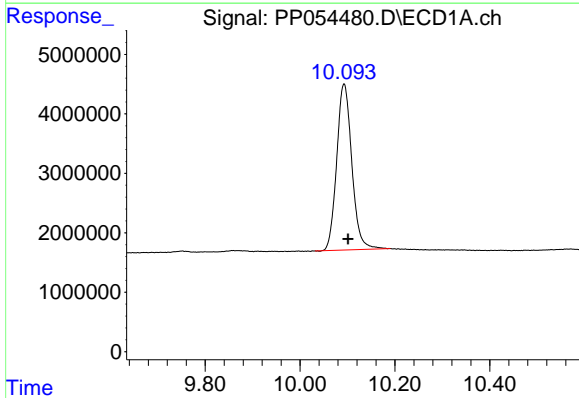
R.T.: 4.335 min
Delta R.T.: -0.003 min
Response: 103935188
Conc: 51.32 ng/ml

Instrument :
ECD_P
ClientSampleId :
AR1254CCC500



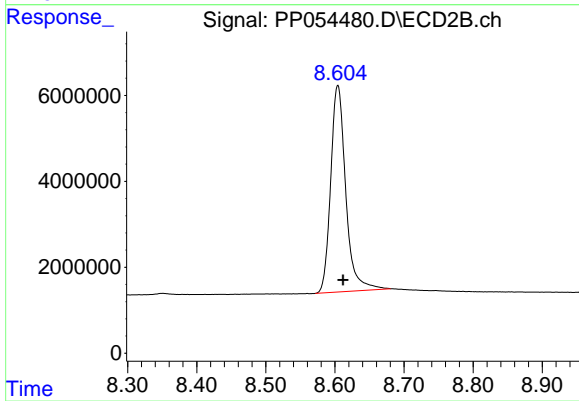
#1 Tetrachloro-m-xylene

R.T.: 3.585 min
Delta R.T.: -0.001 min
Response: 76889536
Conc: 47.67 ng/ml



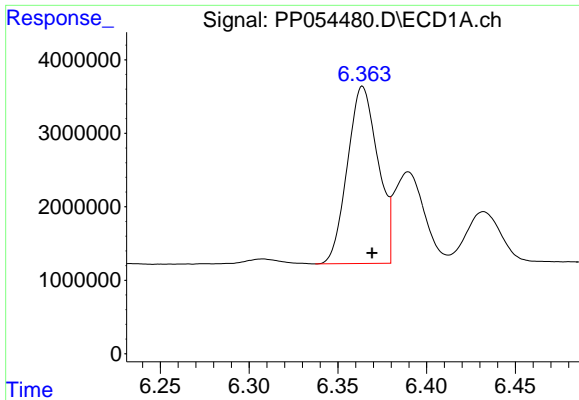
#2 Decachlorobiphenyl

R.T.: 10.093 min
Delta R.T.: -0.008 min
Response: 61799008
Conc: 43.03 ng/ml



#2 Decachlorobiphenyl

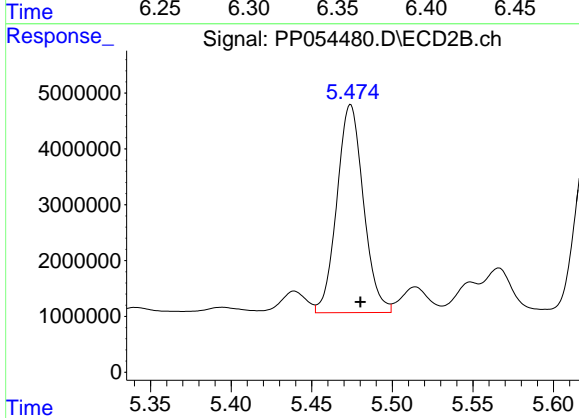
R.T.: 8.604 min
Delta R.T.: -0.008 min
Response: 72794046
Conc: 51.60 ng/ml



#26 AR-1254-1

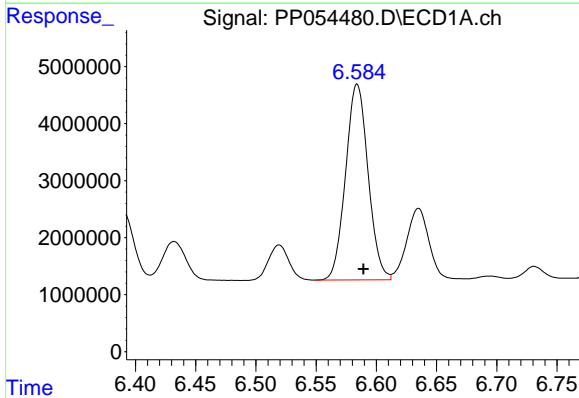
R.T.: 6.364 min
 Delta R.T.: -0.005 min
 Response: 28849592
 Conc: 464.31 ng/ml

Instrument :
 ECD_P
 ClientSampleId :
 AR1254CCC500



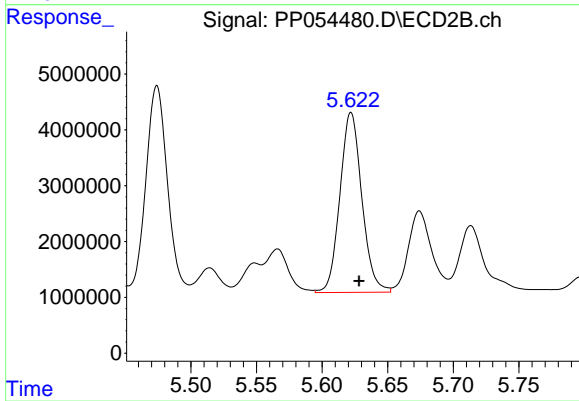
#26 AR-1254-1

R.T.: 5.474 min
 Delta R.T.: -0.006 min
 Response: 42713375
 Conc: 498.08 ng/ml



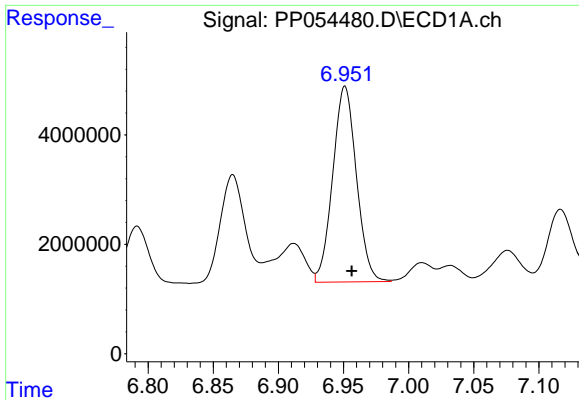
#27 AR-1254-2

R.T.: 6.584 min
 Delta R.T.: -0.005 min
 Response: 44687940
 Conc: 476.18 ng/ml



#27 AR-1254-2

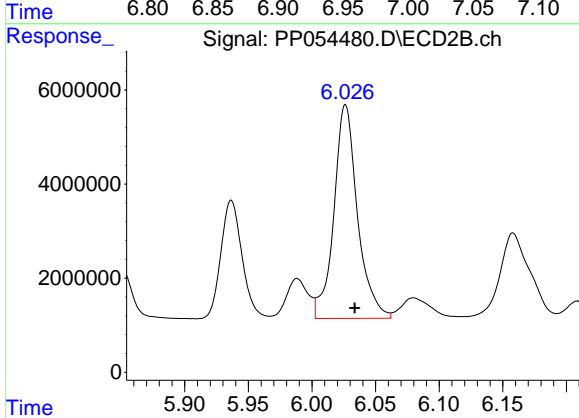
R.T.: 5.622 min
 Delta R.T.: -0.006 min
 Response: 37536996
 Conc: 505.27 ng/ml



#28 AR-1254-3

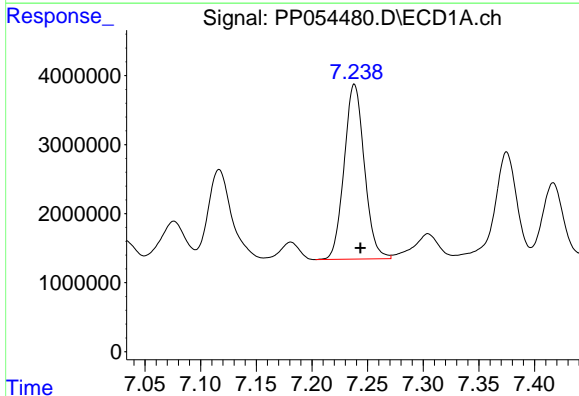
R.T.: 6.951 min
 Delta R.T.: -0.005 min
 Response: 45302708
 Conc: 477.24 ng/ml

Instrument :
 ECD_P
 ClientSampleId :
 AR1254CCC500



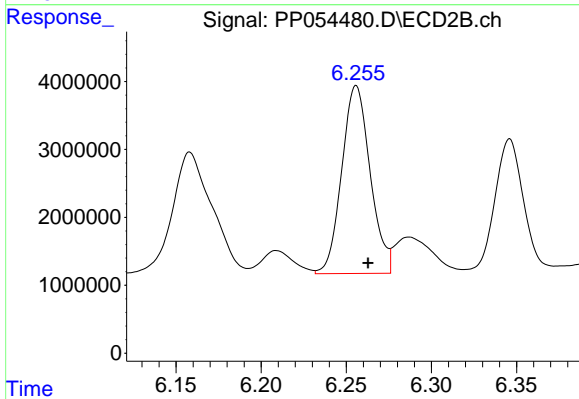
#28 AR-1254-3

R.T.: 6.026 min
 Delta R.T.: -0.007 min
 Response: 58737549
 Conc: 506.04 ng/ml



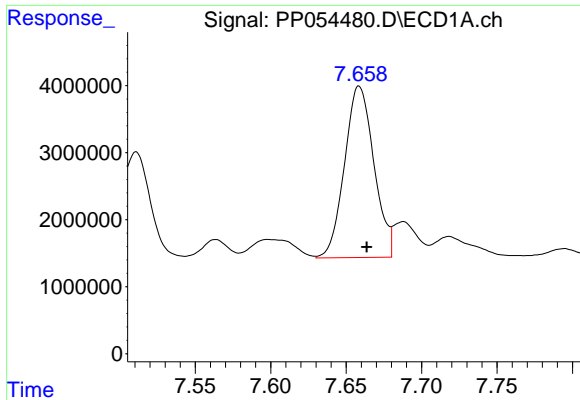
#29 AR-1254-4

R.T.: 7.238 min
 Delta R.T.: -0.006 min
 Response: 32045950
 Conc: 472.41 ng/ml



#29 AR-1254-4

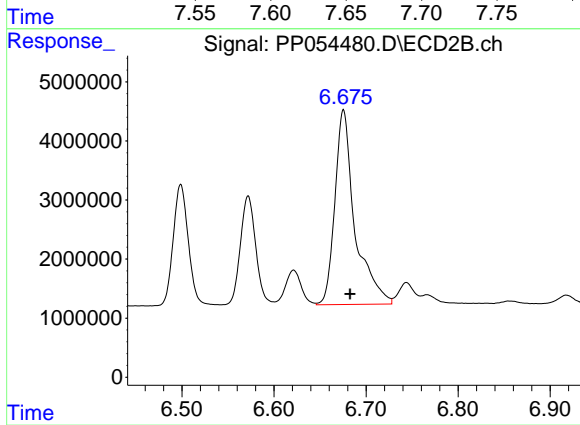
R.T.: 6.256 min
 Delta R.T.: -0.007 min
 Response: 32158108
 Conc: 510.84 ng/ml



#30 AR-1254-5

R.T.: 7.659 min
Delta R.T.: -0.005 min
Response: 34656912
Conc: 455.90 ng/ml

Instrument :
ECD_P
ClientSampleId :
AR1254CCC500



#30 AR-1254-5

R.T.: 6.676 min
Delta R.T.: -0.007 min
Response: 49774766
Conc: 520.56 ng/ml