

Data Path : Z:\pestpcbsrv\HPCHEM1\ECD\_P\Data\PP011124\  
 Data File : PP062836.D  
 Signal(s) : Signal #1: ECD1A.ch Signal #2: ECD2B.ch  
 Acq On : 11 Jan 2024 10:55  
 Operator : YP\AJ  
 Sample : PB158312BS  
 Misc :  
 ALS Vial : 12 Sample Multiplier: 1

Instrument :  
 ECD\_P  
 ClientSampleId :  
 PB158312BS

Integration File signal 1: autoint1.e  
 Integration File signal 2: autoint2.e  
 Quant Time: Jan 11 12:39:45 2024  
 Quant Method : Z:\pestpcbsrv\HPCHEM1\ECD\_P\methods\PP011024.M  
 Quant Title : GC EXTRACTABLES  
 QLast Update : Thu Jan 11 02:58:31 2024  
 Response via : Initial Calibration  
 Integrator: ChemStation

Volume Inj. : 2 µl  
 Signal #1 Phase : ZB-MR1 Signal #2 Phase: ZB-MR2  
 Signal #1 Info : 30Mx0.32mmx 0.50µ Signal #2 Info : 30M x 0.32mm x 0.25µm

Compound	RT#1	RT#2	Resp#1	Resp#2	ng/ml	ng/ml
-----						
System Monitoring Compounds						
1) SA Tetrachlo...	4.395	3.681	52557720	67203266	20.267	19.261
2) SA Decachlor...	10.156	8.785	37180100	49758006	23.510	21.324
Target Compounds						
3) L1 AR-1016-1	5.568	4.789	35082137	46701953	439.066	435.564
4) L1 AR-1016-2	5.591	4.809	50662699	64330343	426.947	430.199
5) L1 AR-1016-3	5.653	4.988	31470205	34943765	435.289	426.931
6) L1 AR-1016-4	5.752	5.030	25501451	28819600	415.835	428.099
7) L1 AR-1016-5	6.048	5.248	25823869	36675554	416.489	408.028
31) L7 AR-1260-1	7.180	6.298	42636101	65940828	412.724	390.925
32) L7 AR-1260-2	7.438	6.488	45954122	75219755	406.890	386.934
33) L7 AR-1260-3	7.800	6.644	29287584	72155948	344.438	389.933
34) L7 AR-1260-4	8.025	7.122	34800118	51896773	405.004	349.599
35) L7 AR-1260-5	8.345	7.366	62388739	119.1E6	392.718	375.956

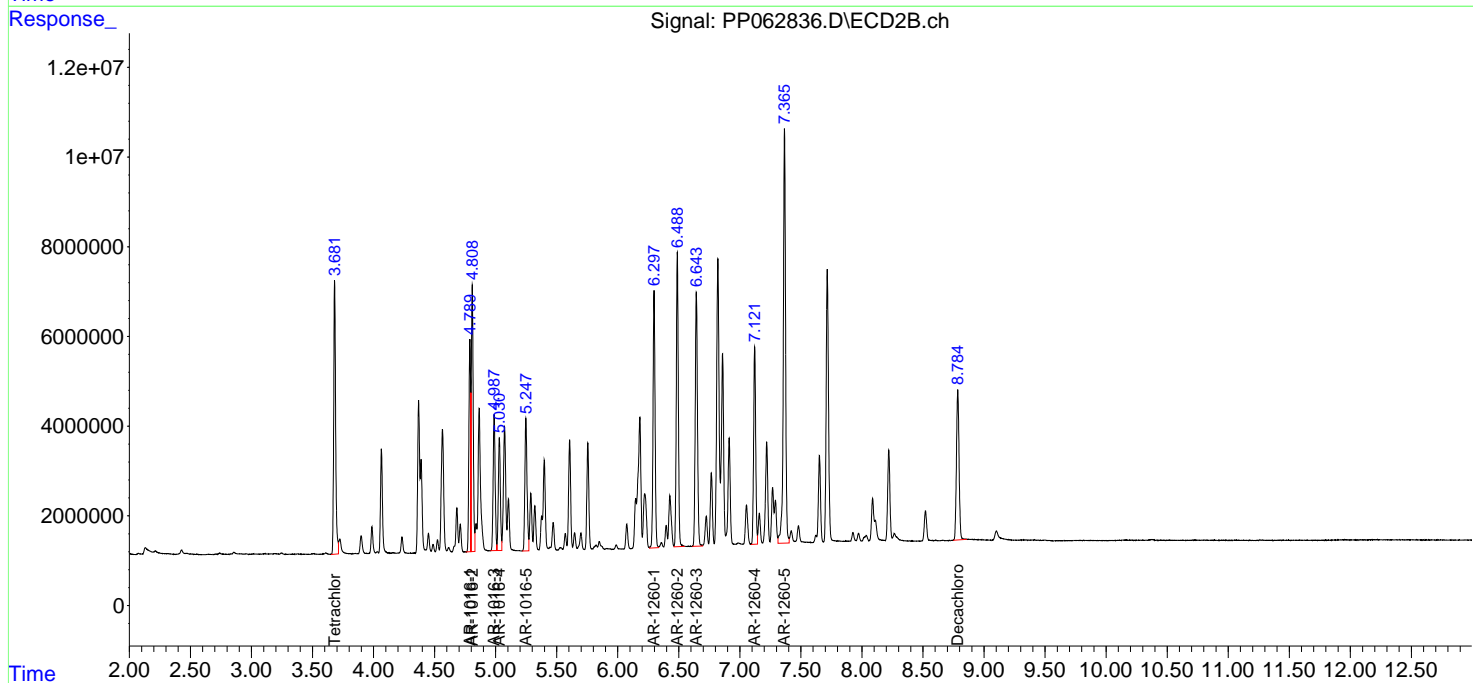
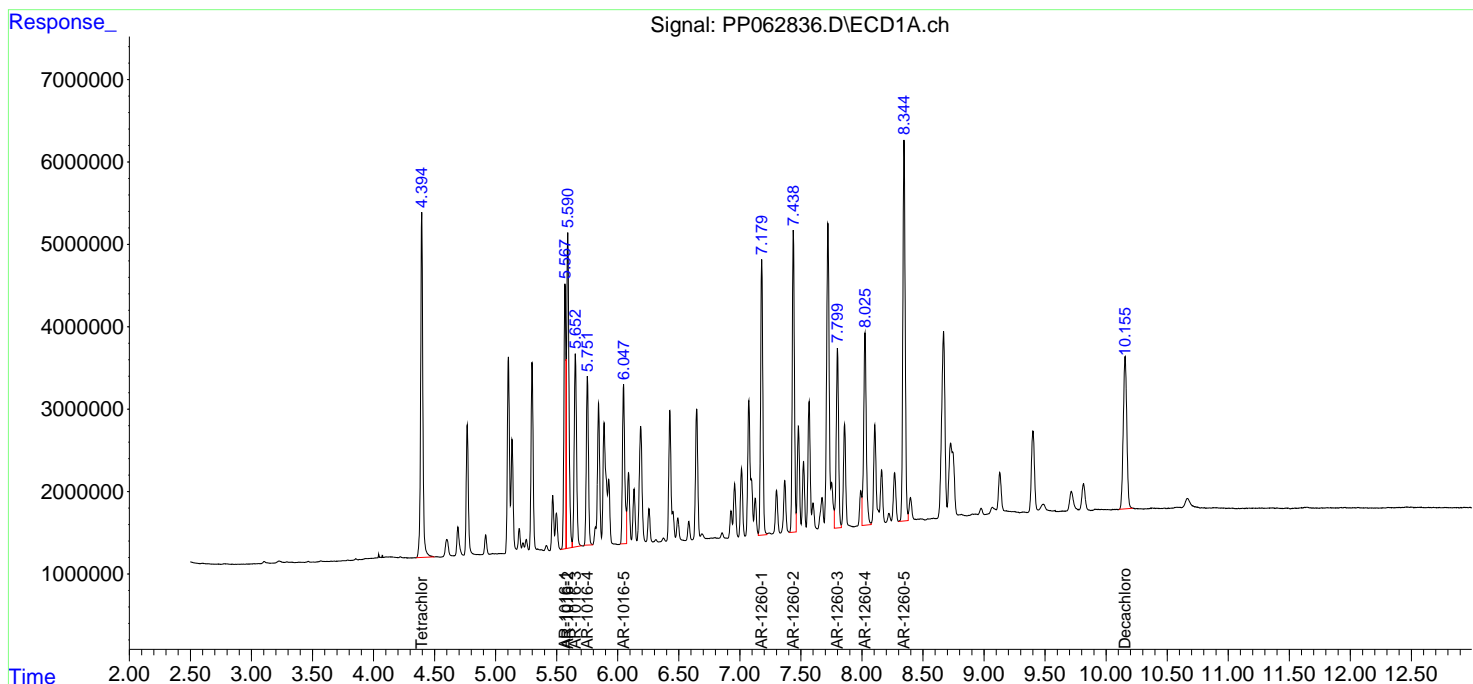
(f)=RT Delta > 1/2 Window (#)=Amounts differ by > 25% (m)=manual int.

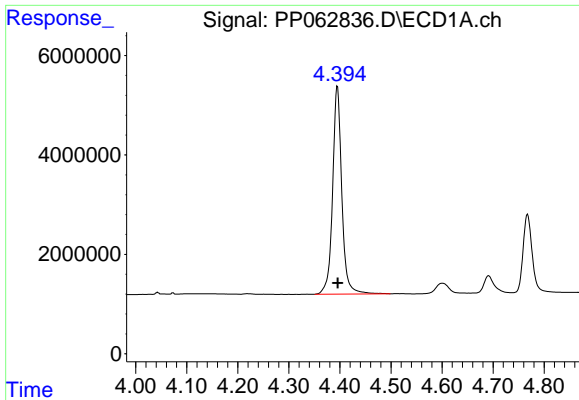
Data Path : Z:\pestpcbsrv\HPCHEM1\ECD\_P\Data\PP011124\  
 Data File : PP062836.D  
 Signal(s) : Signal #1: ECD1A.ch Signal #2: ECD2B.ch  
 Acq On : 11 Jan 2024 10:55  
 Operator : YP\AJ  
 Sample : PB158312BS  
 Misc :  
 ALS Vial : 12 Sample Multiplier: 1

Instrument :  
 ECD\_P  
 ClientSampleId :  
 PB158312BS

Integration File signal 1: autoint1.e  
 Integration File signal 2: autoint2.e  
 Quant Time: Jan 11 12:39:45 2024  
 Quant Method : Z:\pestpcbsrv\HPCHEM1\ECD\_P\methods\PP011024.M  
 Quant Title : GC EXTRACTABLES  
 QLast Update : Thu Jan 11 02:58:31 2024  
 Response via : Initial Calibration  
 Integrator: ChemStation

Volume Inj. : 2 µl  
 Signal #1 Phase : ZB-MR1 Signal #2 Phase: ZB-MR2  
 Signal #1 Info : 30Mx0.32mmx 0.50µ Signal #2 Info : 30M x 0.32mm x 0.25µm

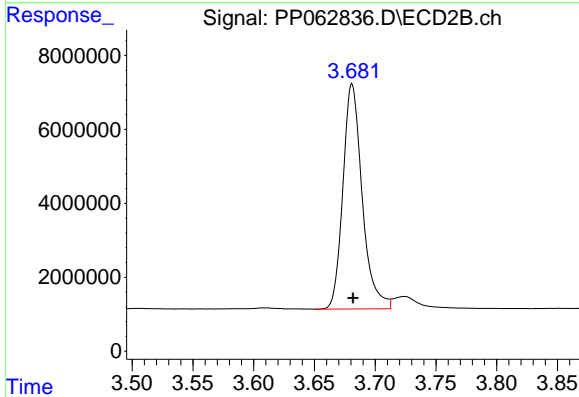




#1 Tetrachloro-m-xylene

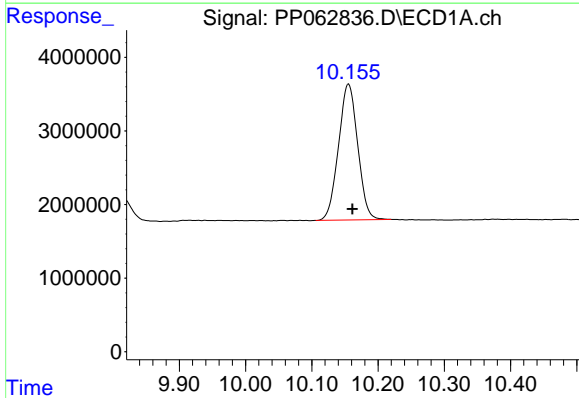
R.T.: 4.395 min  
 Delta R.T.: 0.000 min  
 Response: 52557720  
 Conc: 20.27 ng/ml

Instrument :  
 ECD\_P  
 ClientSampleId :  
 PB158312BS



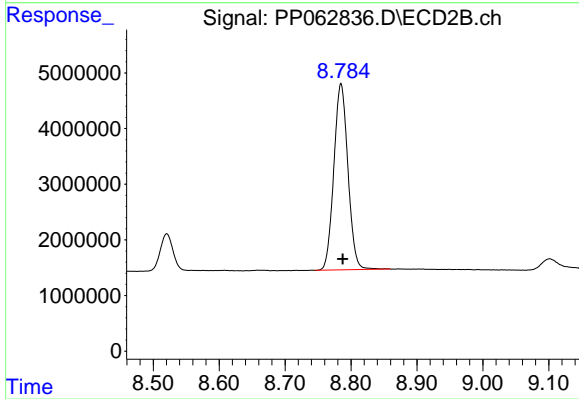
#1 Tetrachloro-m-xylene

R.T.: 3.681 min  
 Delta R.T.: 0.000 min  
 Response: 67203266  
 Conc: 19.26 ng/ml



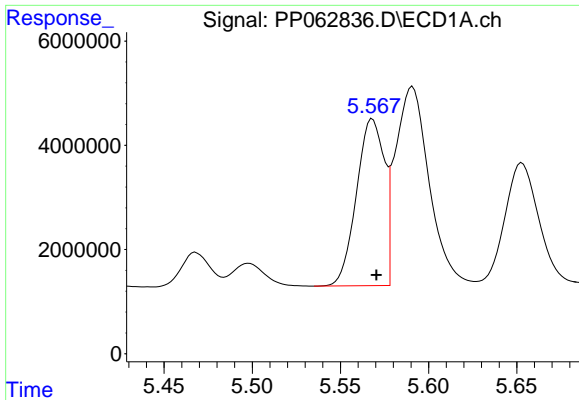
#2 Decachlorobiphenyl

R.T.: 10.156 min  
 Delta R.T.: -0.006 min  
 Response: 37180100  
 Conc: 23.51 ng/ml



#2 Decachlorobiphenyl

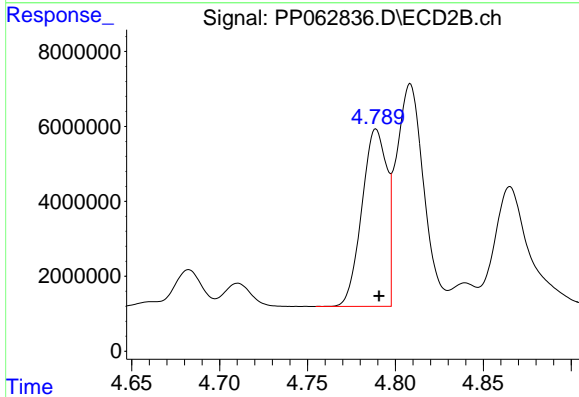
R.T.: 8.785 min  
 Delta R.T.: -0.003 min  
 Response: 49758006  
 Conc: 21.32 ng/ml



#3 AR-1016-1

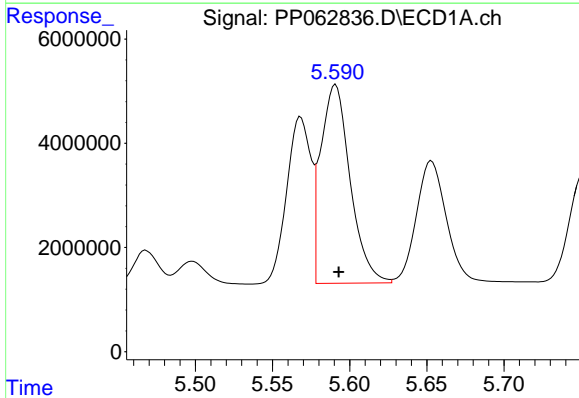
R.T.: 5.568 min  
 Delta R.T.: -0.002 min  
 Response: 35082137  
 Conc: 439.07 ng/ml

Instrument :  
 ECD\_P  
 ClientSampleId :  
 PB158312BS



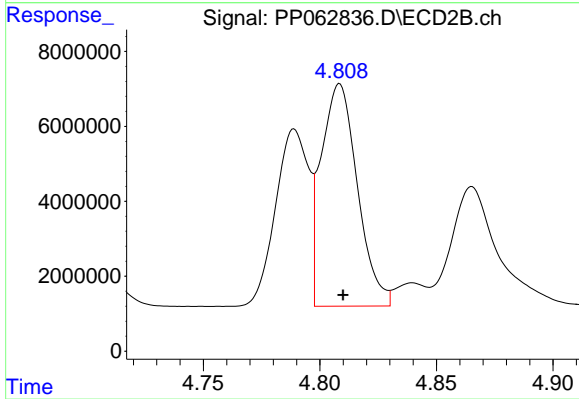
#3 AR-1016-1

R.T.: 4.789 min  
 Delta R.T.: -0.002 min  
 Response: 46701953  
 Conc: 435.56 ng/ml



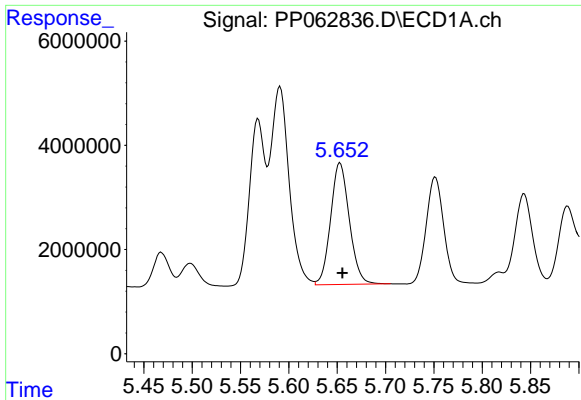
#4 AR-1016-2

R.T.: 5.591 min  
 Delta R.T.: -0.002 min  
 Response: 50662699  
 Conc: 426.95 ng/ml



#4 AR-1016-2

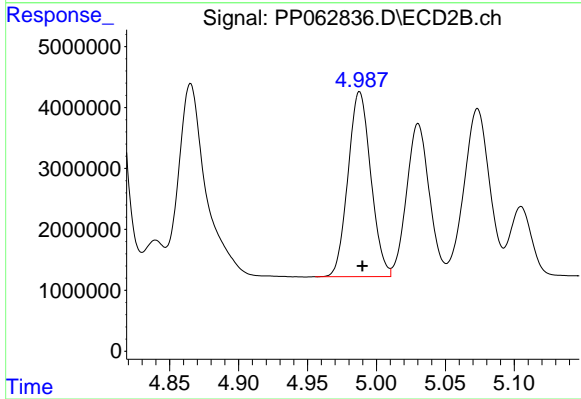
R.T.: 4.809 min  
 Delta R.T.: -0.001 min  
 Response: 64330343  
 Conc: 430.20 ng/ml



#5 AR-1016-3

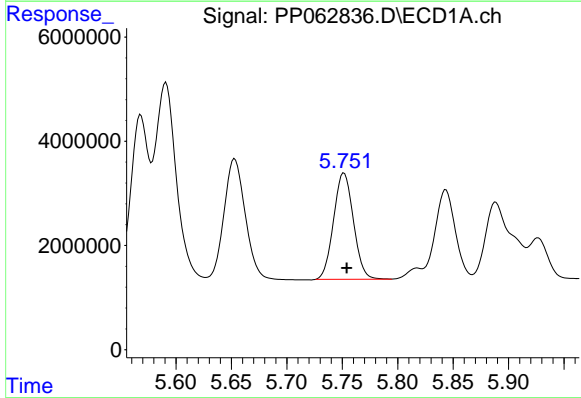
R.T.: 5.653 min  
 Delta R.T.: -0.002 min  
 Response: 31470205  
 Conc: 435.29 ng/ml

Instrument :  
 ECD\_P  
 ClientSampleId :  
 PB158312BS



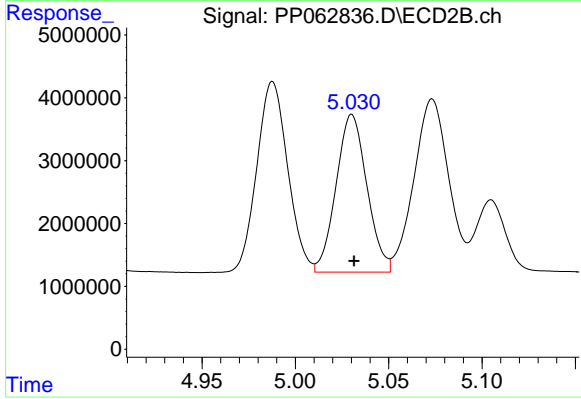
#5 AR-1016-3

R.T.: 4.988 min  
 Delta R.T.: -0.002 min  
 Response: 34943765  
 Conc: 426.93 ng/ml



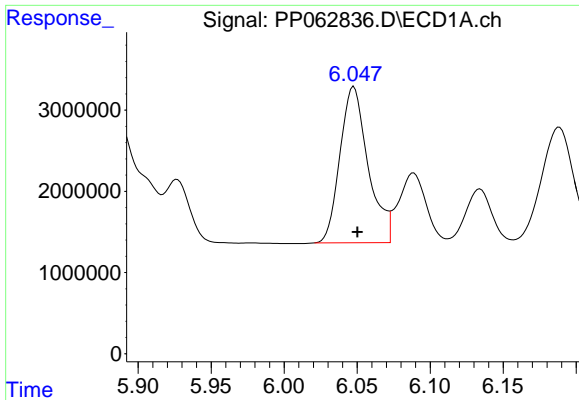
#6 AR-1016-4

R.T.: 5.752 min  
 Delta R.T.: -0.002 min  
 Response: 25501451  
 Conc: 415.83 ng/ml



#6 AR-1016-4

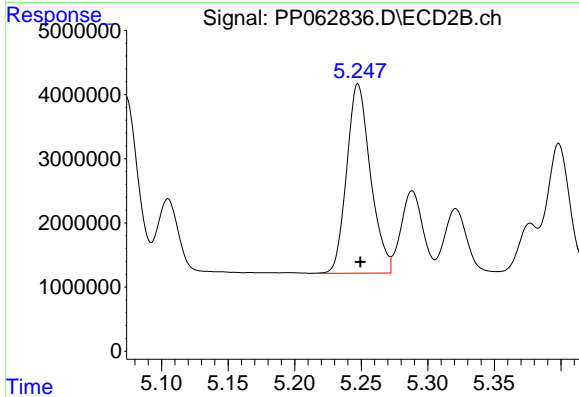
R.T.: 5.030 min  
 Delta R.T.: -0.001 min  
 Response: 28819600  
 Conc: 428.10 ng/ml



#7 AR-1016-5

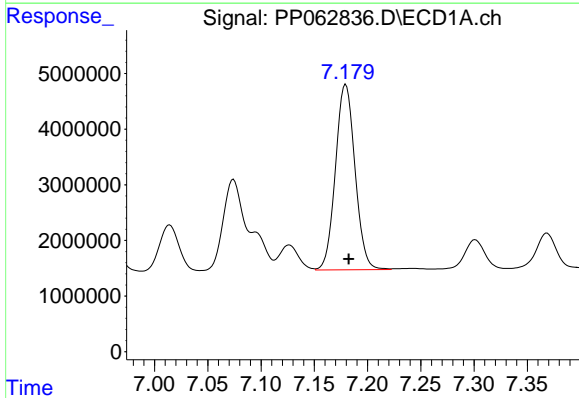
R.T.: 6.048 min  
 Delta R.T.: -0.002 min  
 Response: 25823869  
 Conc: 416.49 ng/ml

Instrument :  
 ECD\_P  
 ClientSampleId :  
 PB158312BS



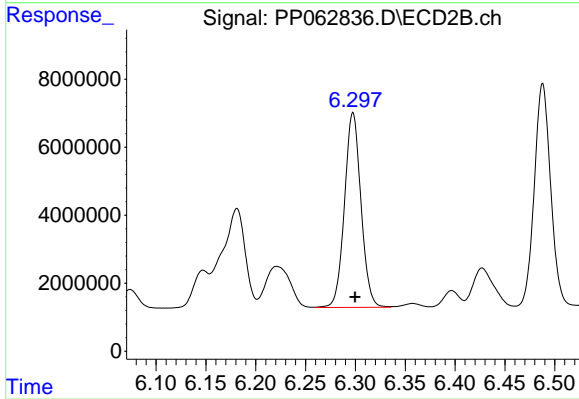
#7 AR-1016-5

R.T.: 5.248 min  
 Delta R.T.: -0.002 min  
 Response: 36675554  
 Conc: 408.03 ng/ml



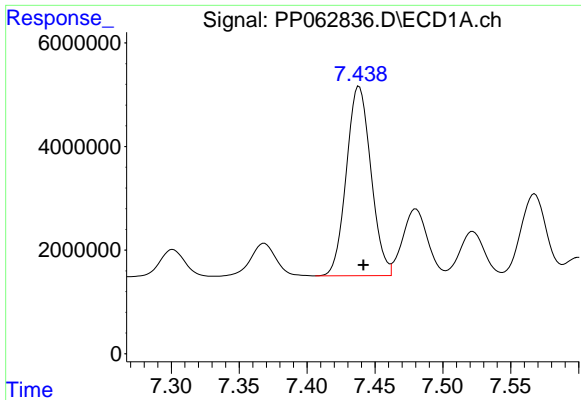
#31 AR-1260-1

R.T.: 7.180 min  
 Delta R.T.: -0.003 min  
 Response: 42636101  
 Conc: 412.72 ng/ml



#31 AR-1260-1

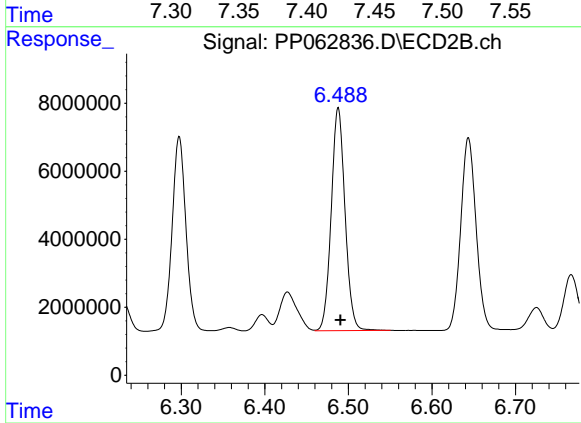
R.T.: 6.298 min  
 Delta R.T.: -0.002 min  
 Response: 65940828  
 Conc: 390.92 ng/ml



#32 AR-1260-2

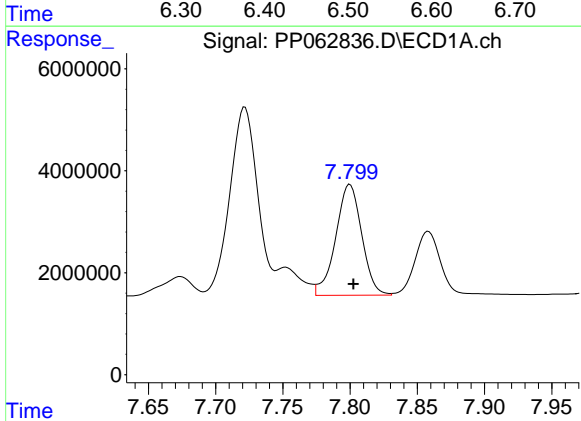
R.T.: 7.438 min  
Delta R.T.: -0.003 min  
Response: 45954122  
Conc: 406.89 ng/ml

Instrument :  
ECD\_P  
ClientSampleId :  
PB158312BS



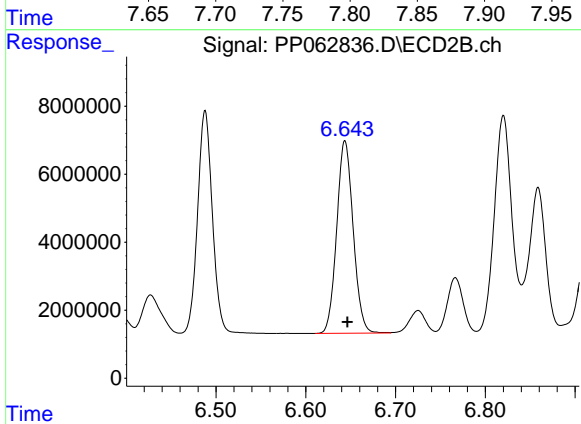
#32 AR-1260-2

R.T.: 6.488 min  
Delta R.T.: -0.002 min  
Response: 75219755  
Conc: 386.93 ng/ml



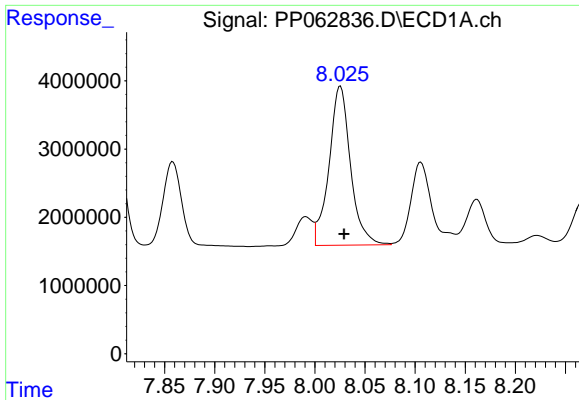
#33 AR-1260-3

R.T.: 7.800 min  
Delta R.T.: -0.003 min  
Response: 29287584  
Conc: 344.44 ng/ml



#33 AR-1260-3

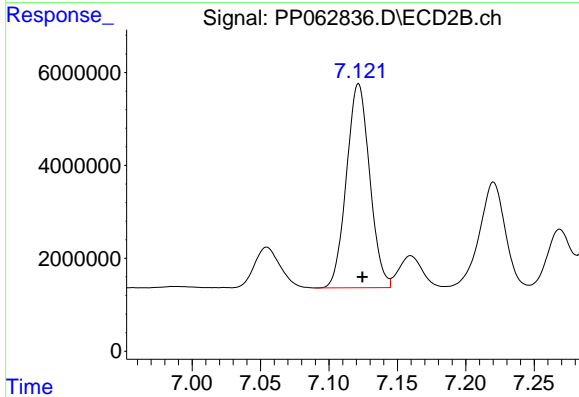
R.T.: 6.644 min  
Delta R.T.: -0.003 min  
Response: 72155948  
Conc: 389.93 ng/ml



#34 AR-1260-4

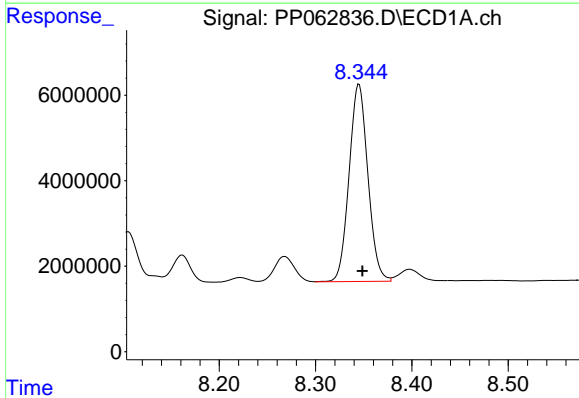
R.T.: 8.025 min  
 Delta R.T.: -0.004 min  
 Response: 34800118  
 Conc: 405.00 ng/ml

Instrument :  
 ECD\_P  
 ClientSampleId :  
 PB158312BS



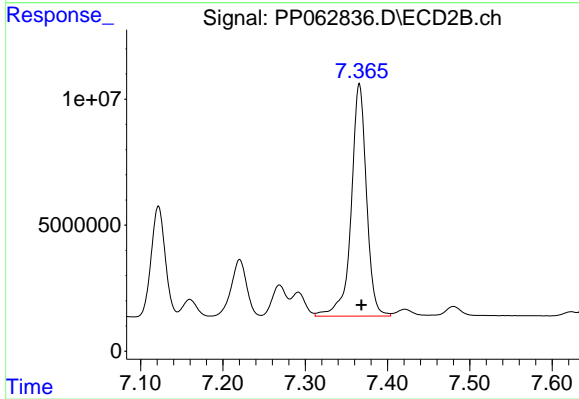
#34 AR-1260-4

R.T.: 7.122 min  
 Delta R.T.: -0.003 min  
 Response: 51896773  
 Conc: 349.60 ng/ml



#35 AR-1260-5

R.T.: 8.345 min  
 Delta R.T.: -0.004 min  
 Response: 62388739  
 Conc: 392.72 ng/ml



#35 AR-1260-5

R.T.: 7.366 min  
 Delta R.T.: -0.003 min  
 Response: 119122735  
 Conc: 375.96 ng/ml