

Data Path : Z:\pestpcbsrv\HPCHEM1\ECD_P\Data\PP011124\
 Data File : PP062845.D
 Signal(s) : Signal #1: ECD1A.ch Signal #2: ECD2B.ch
 Acq On : 11 Jan 2024 13:21
 Operator : YP\AJ
 Sample : I.BLK
 Misc :
 ALS Vial : 2 Sample Multiplier: 1

Instrument :
 ECD_P
 ClientSampleId :
 I.BLK

Integration File signal 1: autoint1.e
 Integration File signal 2: autoint2.e
 Quant Time: Jan 11 13:46:30 2024
 Quant Method : Z:\pestpcbsrv\HPCHEM1\ECD_P\methods\PP011024.M
 Quant Title : GC EXTRACTABLES
 QLast Update : Thu Jan 11 02:58:31 2024
 Response via : Initial Calibration
 Integrator: ChemStation

Volume Inj. : 2 µl
 Signal #1 Phase : ZB-MR1 Signal #2 Phase: ZB-MR2
 Signal #1 Info : 30Mx0.32mmx 0.50µ Signal #2 Info : 30M x 0.32mm x 0.25µm

Compound	RT#1	RT#2	Resp#1	Resp#2	ng/ml	ng/ml

System Monitoring Compounds						
1) SA Tetrachlo...	4.394	3.680	45789160	61473091	17.657	17.618
2) SA Decachlor...	10.155	8.784	33424159	46887052	21.135	20.094

Target Compounds

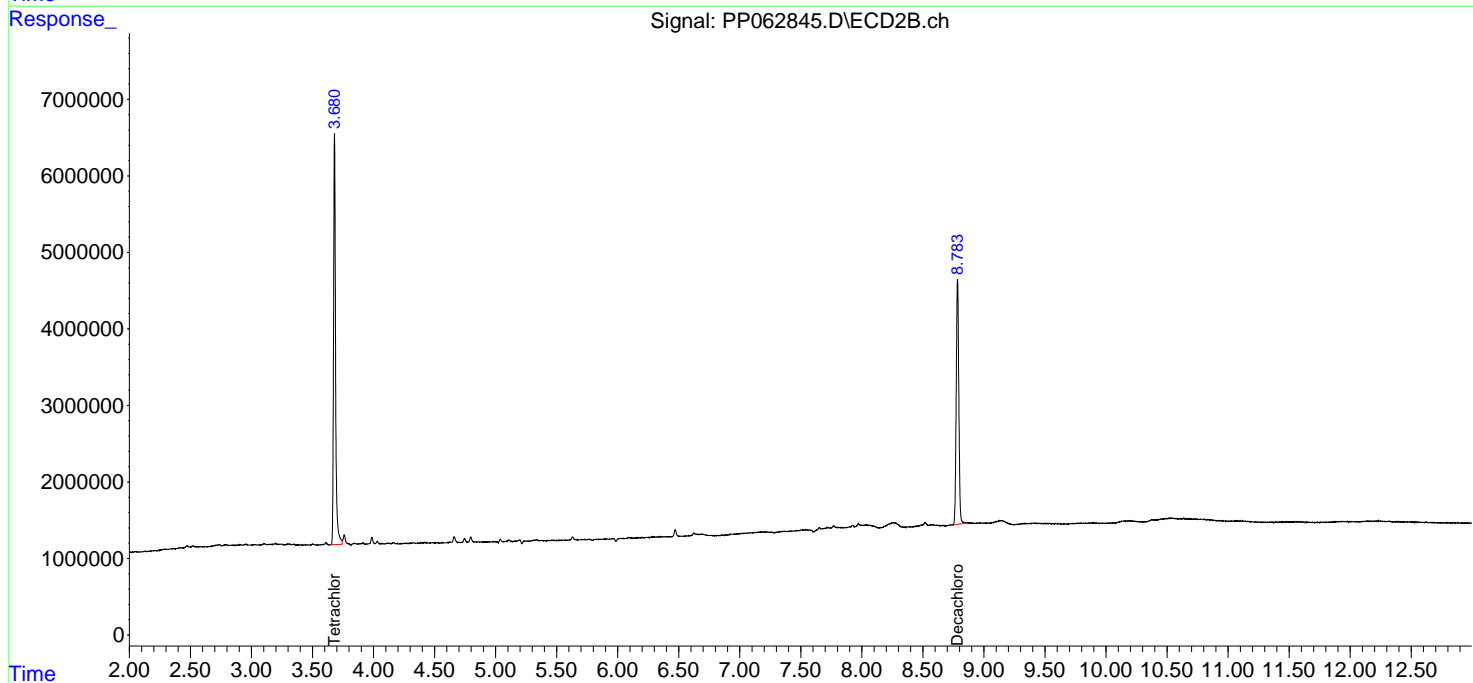
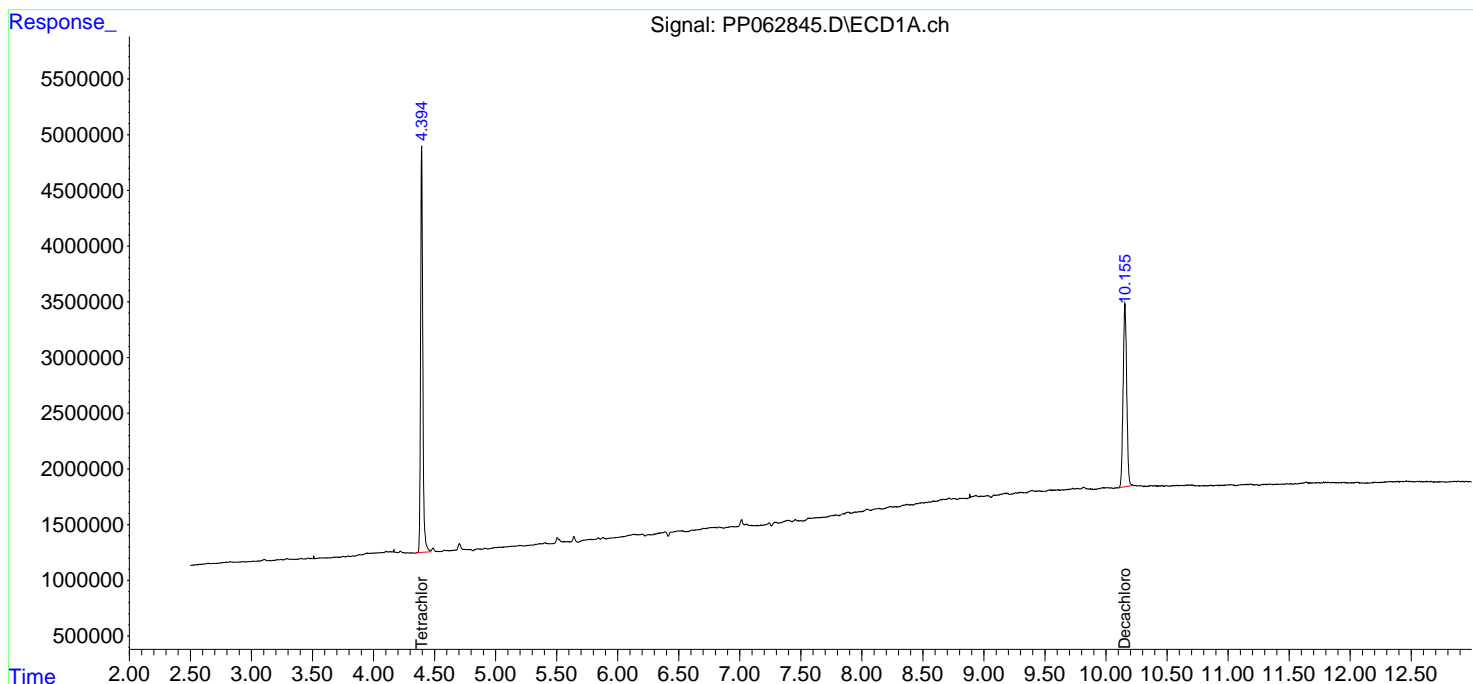
(f)=RT Delta > 1/2 Window (#)=Amounts differ by > 25% (m)=manual int.

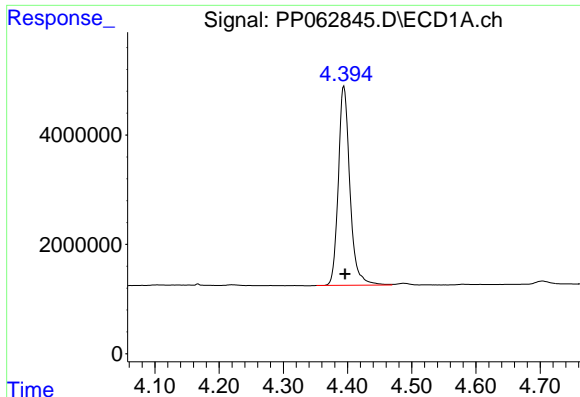
Data Path : Z:\pestpcbsrv\HPCHEM1\ECD_P\Data\PP011124\
 Data File : PP062845.D
 Signal(s) : Signal #1: ECD1A.ch Signal #2: ECD2B.ch
 Acq On : 11 Jan 2024 13:21
 Operator : YP\AJ
 Sample : I.BLK
 Misc :
 ALS Vial : 2 Sample Multiplier: 1

Instrument :
 ECD_P
 ClientSampleId :
 I.BLK

Integration File signal 1: autoint1.e
 Integration File signal 2: autoint2.e
 Quant Time: Jan 11 13:46:30 2024
 Quant Method : Z:\pestpcbsrv\HPCHEM1\ECD_P\methods\PP011024.M
 Quant Title : GC EXTRACTABLES
 QLast Update : Thu Jan 11 02:58:31 2024
 Response via : Initial Calibration
 Integrator: ChemStation

Volume Inj. : 2 µl
 Signal #1 Phase : ZB-MR1 Signal #2 Phase: ZB-MR2
 Signal #1 Info : 30Mx0.32mmx 0.50µ Signal #2 Info : 30M x 0.32mm x 0.25µm

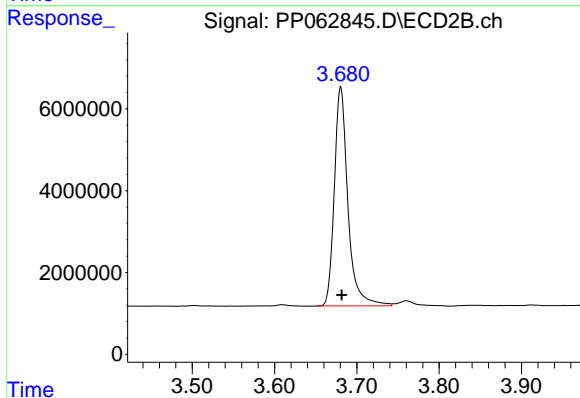




#1 Tetrachloro-m-xylene

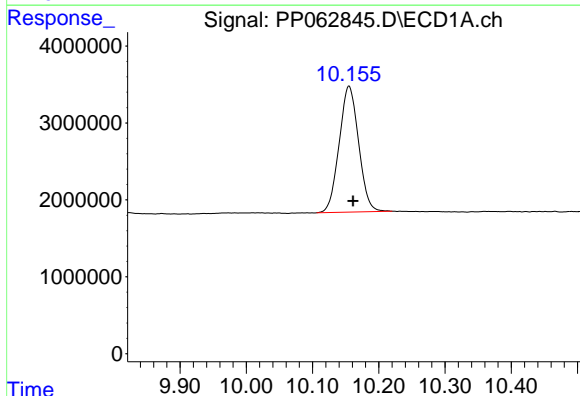
R.T.: 4.394 min
 Delta R.T.: -0.002 min
 Response: 45789160
 Conc: 17.66 ng/ml

Instrument :
 ECD_P
 ClientSampleId :
 I.BLK



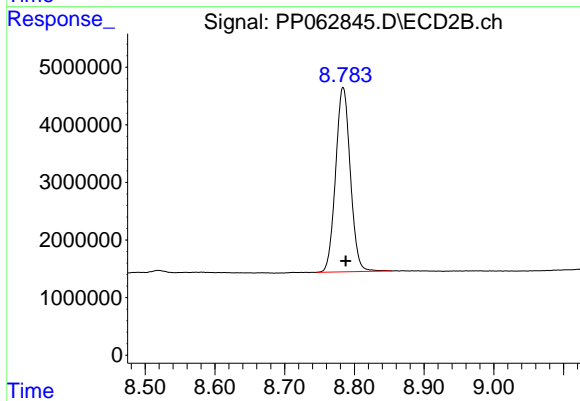
#1 Tetrachloro-m-xylene

R.T.: 3.680 min
 Delta R.T.: -0.001 min
 Response: 61473091
 Conc: 17.62 ng/ml



#2 Decachlorobiphenyl

R.T.: 10.155 min
 Delta R.T.: -0.006 min
 Response: 33424159
 Conc: 21.14 ng/ml



#2 Decachlorobiphenyl

R.T.: 8.784 min
 Delta R.T.: -0.004 min
 Response: 46887052
 Conc: 20.09 ng/ml