

Data Path : Z:\pestpcbsrv\HPCHEM1\ECD\_P\Data\PP011222\  
 Data File : PP042813.D  
 Signal(s) : Signal #1: ECD1A.CH Signal #2: ECD2B.CH  
 Acq On : 12 Jan 2022 15:14  
 Operator : AJ\MA  
 Sample : AR1660ICC050  
 Misc :  
 ALS Vial : 7 Sample Multiplier: 1

**Instrument :**  
 ECD\_P  
**ClientSampleId :**  
 AR1660ICC050

**Manual Integrations**  
**APPROVED**

Reviewed By :Ankita Jodhani 01/13/2022  
 Supervised By :mohammad ahmed 01/13/2022

Integration File signal 1: autoint1.e  
 Integration File signal 2: autoint2.e  
 Quant Time: Jan 12 15:13:19 2022  
 Quant Method : Z:\pestpcbsrv\HPCHEM1\ECD\_P\methods\PP011222.M  
 Quant Title : GC EXTRACTABLES  
 QLast Update : Wed Jan 12 14:35:19 2022  
 Response via : Initial Calibration  
 Integrator: ChemStation 6890 Scale Mode: Small noise peaks clipped

Volume Inj. : 2 µl  
 Signal #1 Phase : ZB-MR2 Signal #2 Phase: ZB-MR2  
 Signal #1 Info : 30Mx0.32mmx 0.50µ Signal #2 Info : 30M x 0.32mm x 0.25µm

Compound	RT#1	RT#2	Resp#1	Resp#2	ng/ml	ng/ml
-----						
System Monitoring Compounds						
1) SA Tetrachlo...	4.873	4.043	110344	130310	4.591	5.229
2) SA Decachlor...	10.802	9.379	79852	106065	5.512	5.914
Target Compounds						
3) L1 AR-1016-1	6.177	5.308	37920	55926	48.020	54.825
4) L1 AR-1016-2	6.201	5.328	63154	76052	52.870	53.068
5) L1 AR-1016-3	6.264	5.523	36524	45101	54.884	56.778
6) L1 AR-1016-4	6.371	5.573	32659	35781	52.143	57.927
7) L1 AR-1016-5	6.685	5.805	32011	37598	54.885	49.240
31) L7 AR-1260-1	7.857	6.905	57392	71387	59.848	54.525m
32) L7 AR-1260-2	8.123	7.102	61936	90557	60.839	56.670m
33) L7 AR-1260-3	8.489	7.259	43900	86249	58.471	59.719
34) L7 AR-1260-4	8.715	7.743	43088	60247	48.039	50.072m
35) L7 AR-1260-5	9.033	7.991	91056	136680	53.369	54.039
-----						

(f)=RT Delta > 1/2 Window (#)=Amounts differ by > 25% (m)=manual int.

Data Path : Z:\pestpcbsrv\HPCHEM1\ECD\_P\Data\PP011222\  
 Data File : PP042813.D  
 Signal(s) : Signal #1: ECD1A.CH Signal #2: ECD2B.CH  
 Acq On : 12 Jan 2022 15:14  
 Operator : AJ\MA  
 Sample : AR1660ICC050  
 Misc :  
 ALS Vial : 7 Sample Multiplier: 1

**Instrument :**

ECD\_P

**ClientSampleId :**

AR1660ICC050

**Manual Integrations**

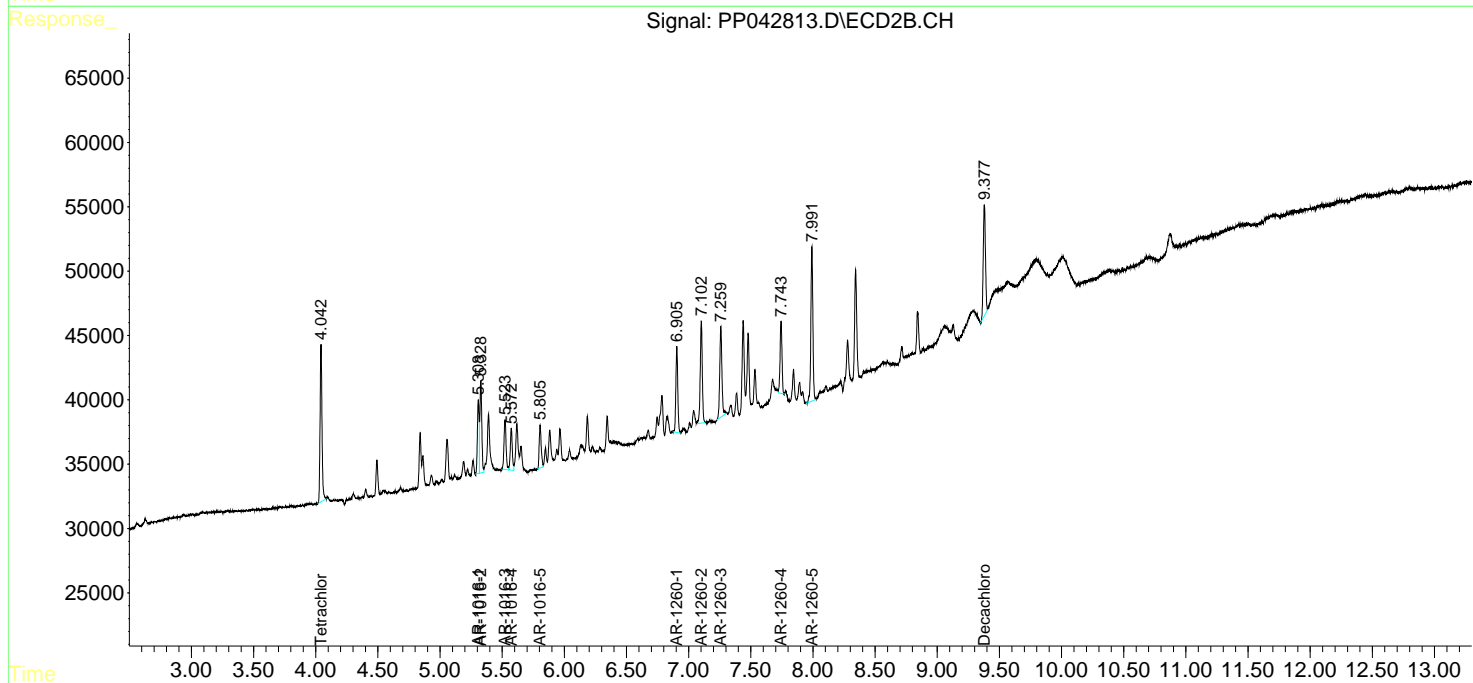
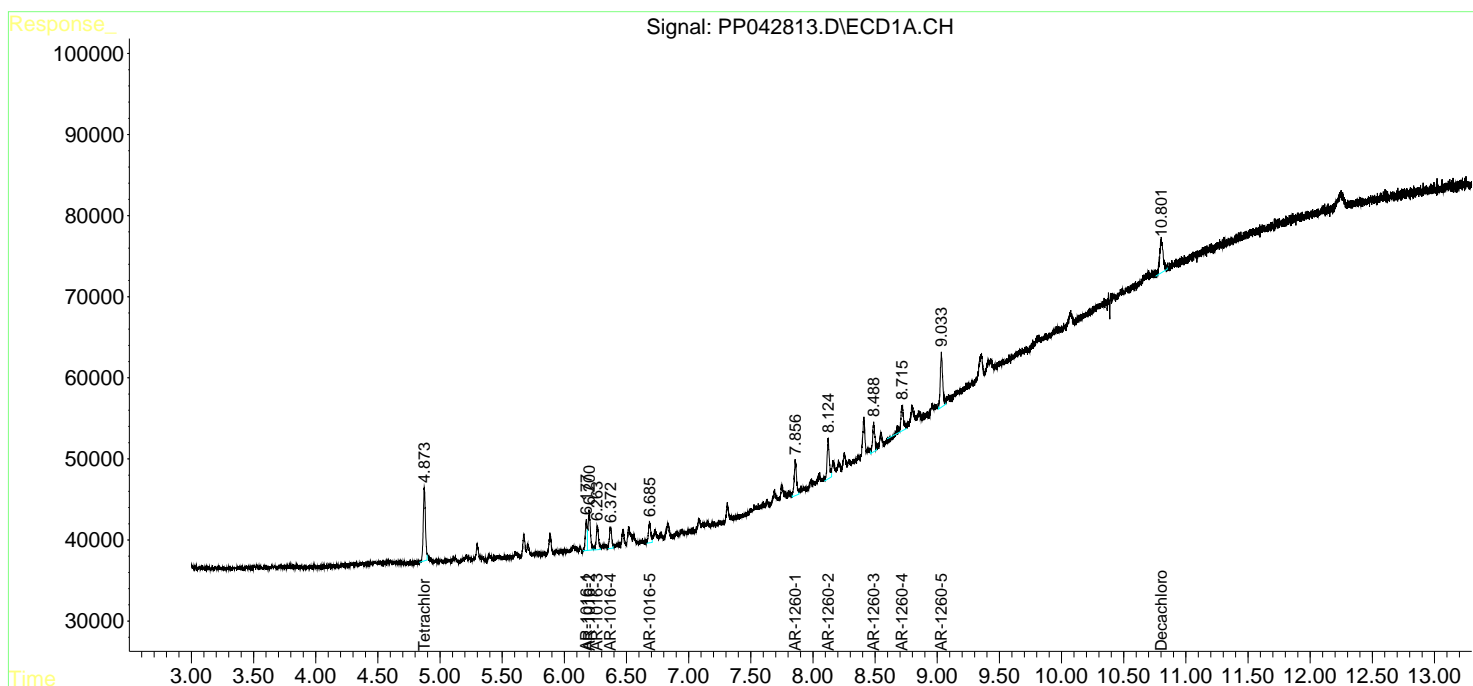
**APPROVED**

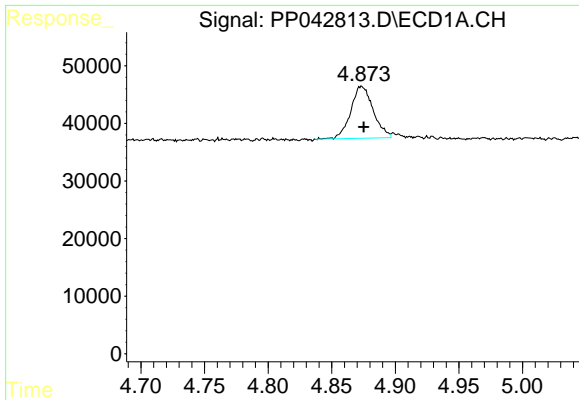
Reviewed By :Ankita Jodhani 01/13/2022

Supervised By :mohammad ahmed 01/13/2022

Integration File signal 1: autoint1.e  
 Integration File signal 2: autoint2.e  
 Quant Time: Jan 12 15:13:19 2022  
 Quant Method : Z:\pestpcbsrv\HPCHEM1\ECD\_P\methods\PP011222.M  
 Quant Title : GC EXTRACTABLES  
 QLast Update : Wed Jan 12 14:35:19 2022  
 Response via : Initial Calibration  
 Integrator: ChemStation 6890 Scale Mode: Small noise peaks clipped

Volume Inj. : 2 µl  
 Signal #1 Phase : ZB-MR1 Signal #2 Phase: ZB-MR2  
 Signal #1 Info : 30Mx0.32mmx 0.50µ Signal #2 Info : 30M x 0.32mm x 0.25µm



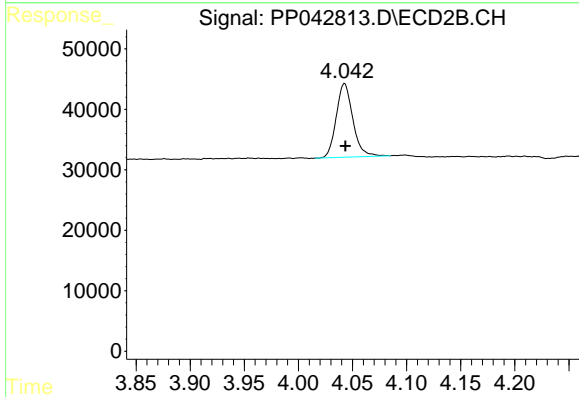


#1 Tetrachloro-m-xylene  
 R.T.: 4.873 min  
 Delta R.T.: -0.002 min  
 Response: 110344  
 Conc: 4.59 ng/ml

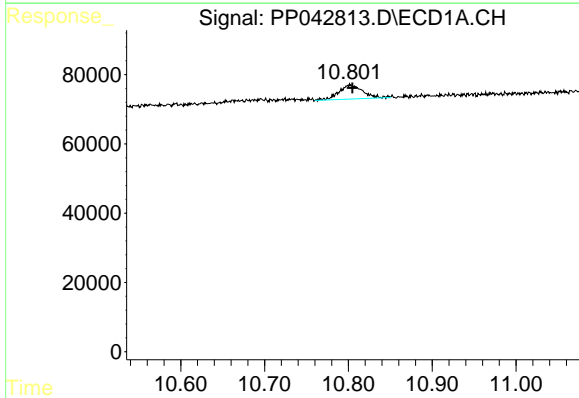
Instrument :  
 ECD\_P  
 ClientSampleId :  
 AR1660ICC050

Manual Integrations  
**APPROVED**

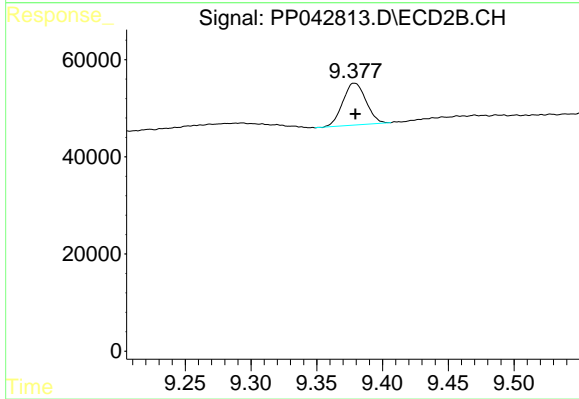
Reviewed By :Ankita Jodhani 01/13/2022  
 Supervised By :mohammad ahmed 01/13/2022



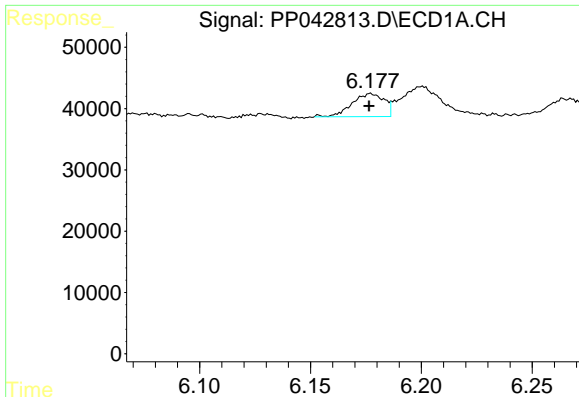
#1 Tetrachloro-m-xylene  
 R.T.: 4.043 min  
 Delta R.T.: 0.000 min  
 Response: 130310  
 Conc: 5.23 ng/ml



#2 Decachlorobiphenyl  
 R.T.: 10.802 min  
 Delta R.T.: -0.003 min  
 Response: 79852  
 Conc: 5.51 ng/ml



#2 Decachlorobiphenyl  
 R.T.: 9.379 min  
 Delta R.T.: 0.000 min  
 Response: 106065  
 Conc: 5.91 ng/ml



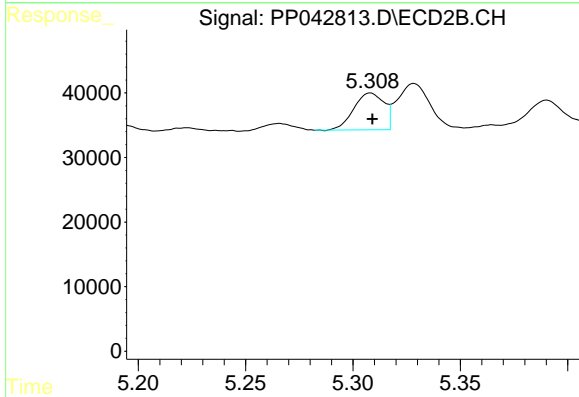
#3 AR-1016-1

R.T.: 6.177 min  
 Delta R.T.: 0.000 min  
 Response: 37920  
 Conc: 48.02 ng/ml

Instrument :  
 ECD\_P  
 ClientSampleId :  
 AR1660ICC050

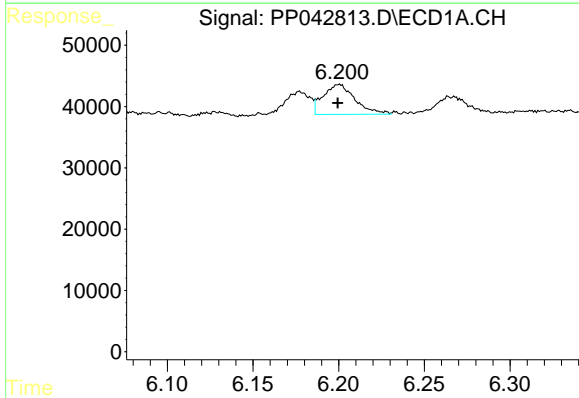
Manual Integrations  
 APPROVED

Reviewed By :Ankita Jodhani 01/13/2022  
 Supervised By :mohammad ahmed 01/13/2022



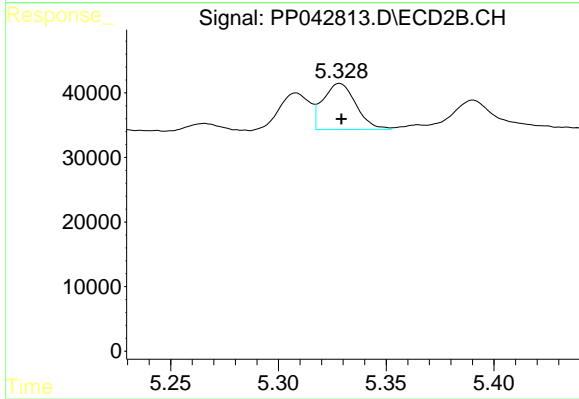
#3 AR-1016-1

R.T.: 5.308 min  
 Delta R.T.: 0.000 min  
 Response: 55926  
 Conc: 54.83 ng/ml



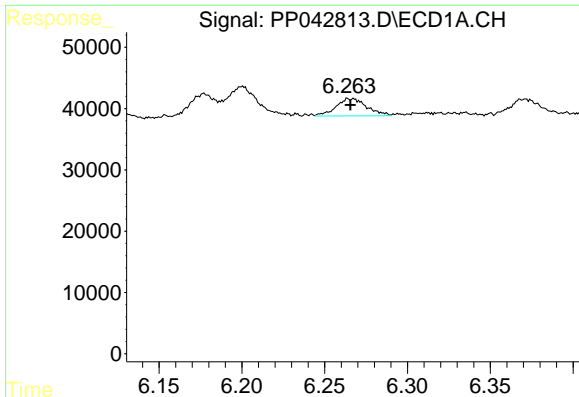
#4 AR-1016-2

R.T.: 6.201 min  
 Delta R.T.: 0.001 min  
 Response: 63154  
 Conc: 52.87 ng/ml



#4 AR-1016-2

R.T.: 5.328 min  
 Delta R.T.: 0.000 min  
 Response: 76052  
 Conc: 53.07 ng/ml



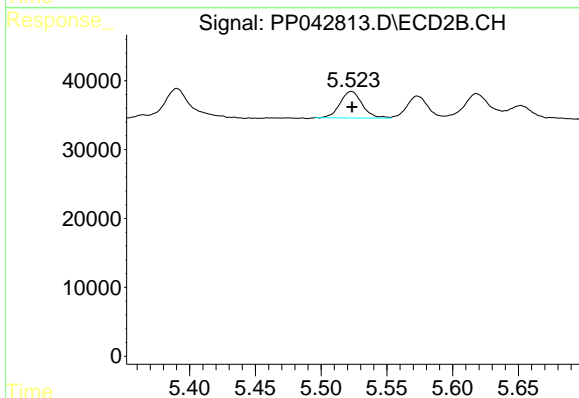
#5 AR-1016-3

R.T.: 6.264 min  
 Delta R.T.: -0.002 min  
 Response: 36524  
 Conc: 54.88 ng/ml

Instrument :  
 ECD\_P  
 ClientSampleId :  
 AR1660ICC050

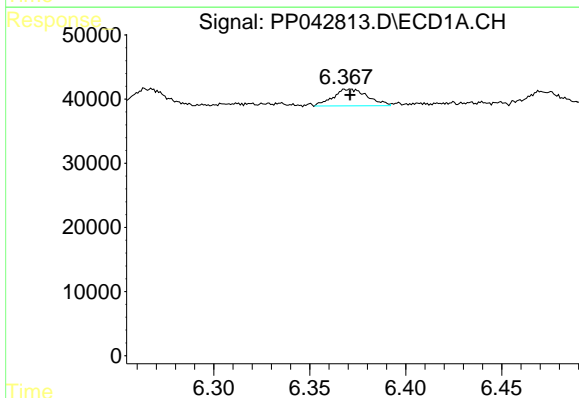
Manual Integrations  
 APPROVED

Reviewed By :Ankita Jodhani 01/13/2022  
 Supervised By :mohammad ahmed 01/13/2022



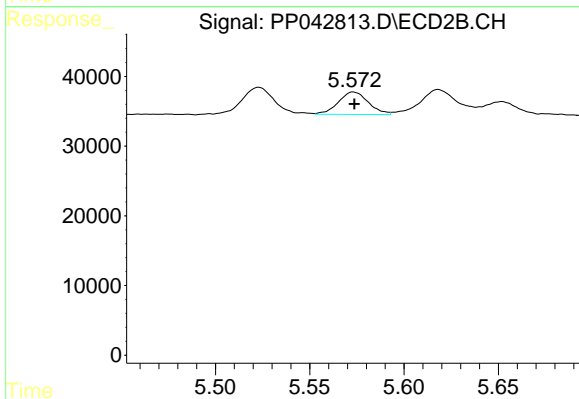
#5 AR-1016-3

R.T.: 5.523 min  
 Delta R.T.: 0.000 min  
 Response: 45101  
 Conc: 56.78 ng/ml



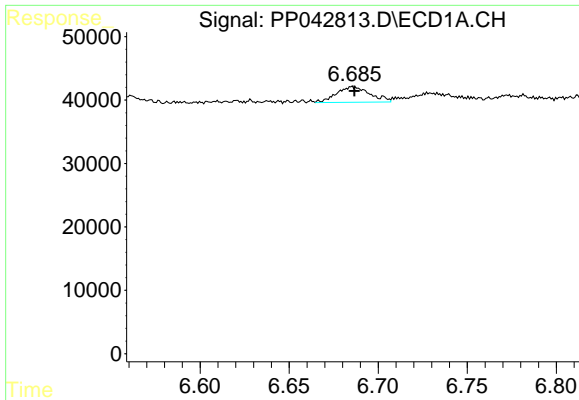
#6 AR-1016-4

R.T.: 6.371 min  
 Delta R.T.: 0.000 min  
 Response: 32659  
 Conc: 52.14 ng/ml



#6 AR-1016-4

R.T.: 5.573 min  
 Delta R.T.: 0.000 min  
 Response: 35781  
 Conc: 57.93 ng/ml



#7 AR-1016-5

R.T.: 6.685 min  
 Delta R.T.: -0.001 min  
 Response: 32011  
 Conc: 54.89 ng/ml

Instrument :

ECD\_P

ClientSampleId :

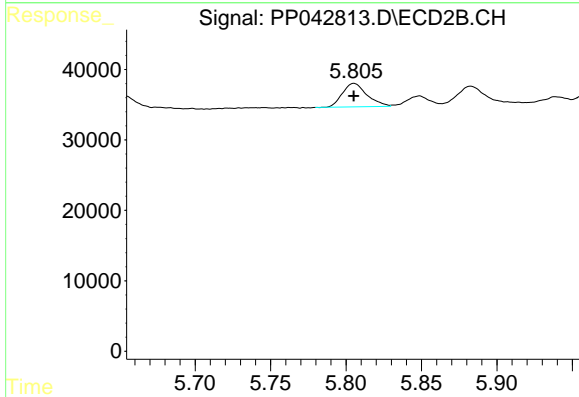
AR1660ICC050

Manual Integrations

APPROVED

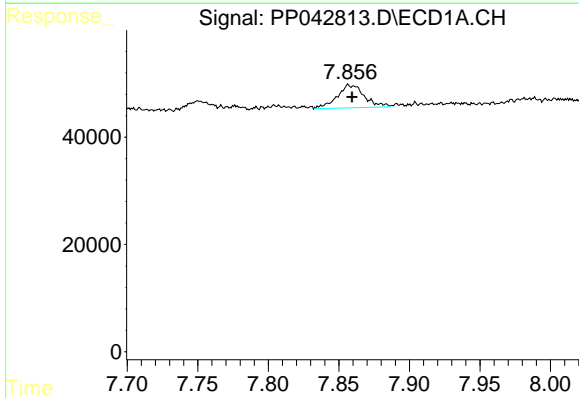
Reviewed By :Ankita Jodhani 01/13/2022

Supervised By :mohammad ahmed 01/13/2022



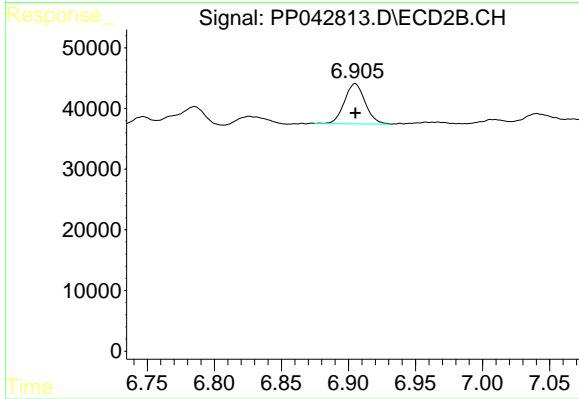
#7 AR-1016-5

R.T.: 5.805 min  
 Delta R.T.: 0.000 min  
 Response: 37598  
 Conc: 49.24 ng/ml



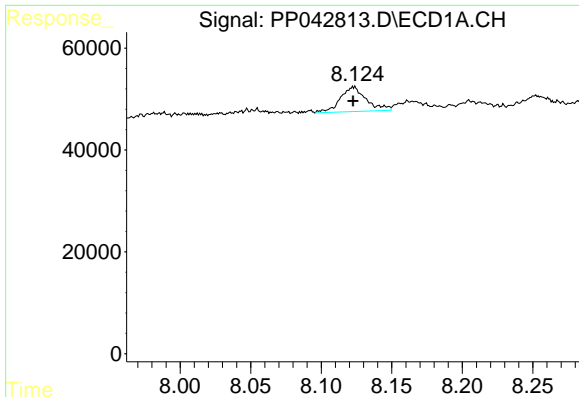
#31 AR-1260-1

R.T.: 7.857 min  
 Delta R.T.: -0.003 min  
 Response: 57392  
 Conc: 59.85 ng/ml



#31 AR-1260-1

R.T.: 6.905 min  
 Delta R.T.: 0.000 min  
 Response: 71387  
 Conc: 54.53 ng/ml m



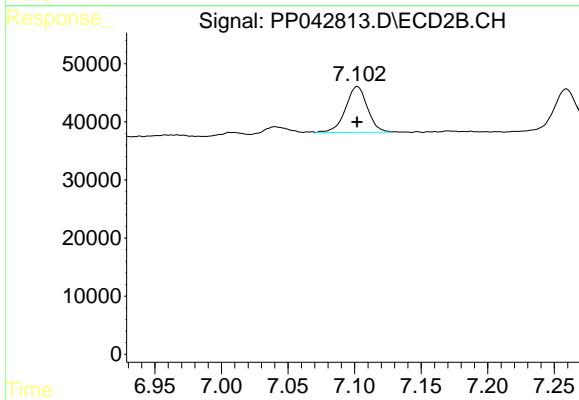
#32 AR-1260-2

R.T.: 8.123 min  
 Delta R.T.: 0.000 min  
 Response: 61936  
 Conc: 60.84 ng/ml

Instrument :  
 ECD\_P  
 ClientSampleId :  
 AR1660ICC050

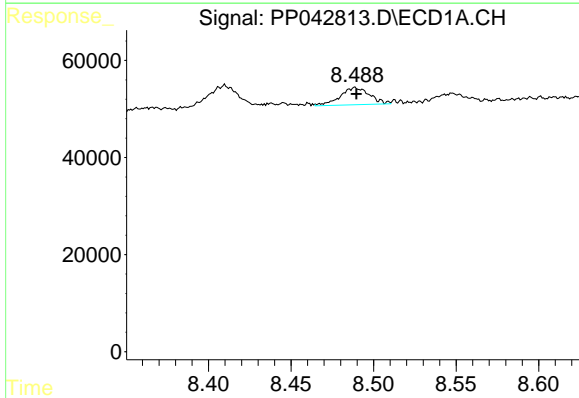
Manual Integrations  
 APPROVED

Reviewed By :Ankita Jodhani 01/13/2022  
 Supervised By :mohammad ahmed 01/13/2022



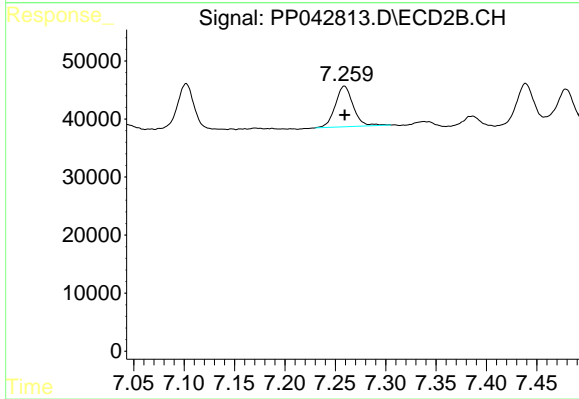
#32 AR-1260-2

R.T.: 7.102 min  
 Delta R.T.: 0.000 min  
 Response: 90557  
 Conc: 56.67 ng/ml m



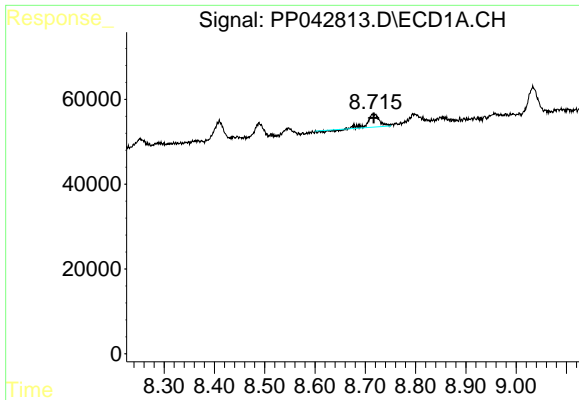
#33 AR-1260-3

R.T.: 8.489 min  
 Delta R.T.: 0.000 min  
 Response: 43900  
 Conc: 58.47 ng/ml



#33 AR-1260-3

R.T.: 7.259 min  
 Delta R.T.: 0.000 min  
 Response: 86249  
 Conc: 59.72 ng/ml



#34 AR-1260-4

R.T.: 8.715 min  
 Delta R.T.: -0.002 min  
 Response: 43088  
 Conc: 48.04 ng/ml

Instrument :

ECD\_P

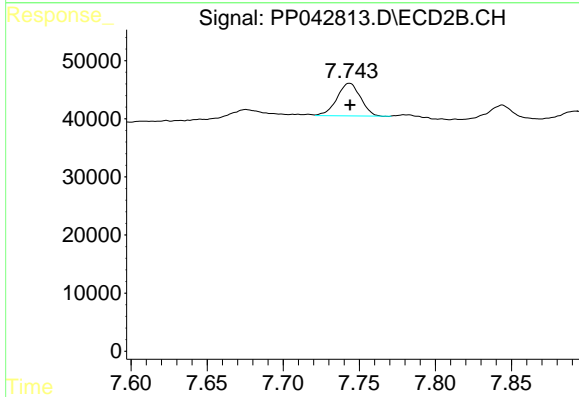
ClientSampleId :

AR1660ICC050

Manual Integrations

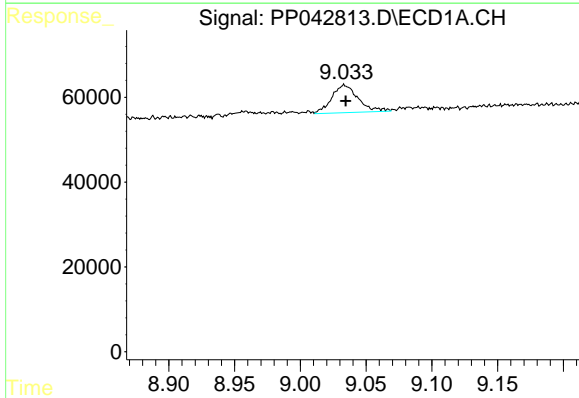
APPROVED

Reviewed By :Ankita Jodhani 01/13/2022  
 Supervised By :mohammad ahmed 01/13/2022



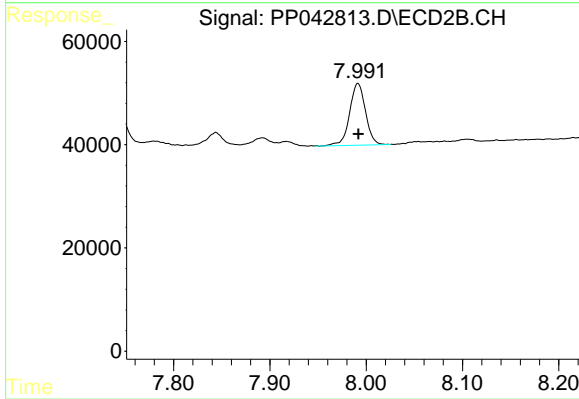
#34 AR-1260-4

R.T.: 7.743 min  
 Delta R.T.: 0.000 min  
 Response: 60247  
 Conc: 50.07 ng/ml m



#35 AR-1260-5

R.T.: 9.033 min  
 Delta R.T.: -0.001 min  
 Response: 91056  
 Conc: 53.37 ng/ml



#35 AR-1260-5

R.T.: 7.991 min  
 Delta R.T.: 0.000 min  
 Response: 136680  
 Conc: 54.04 ng/ml