

Data Path : Z:\pestpcbsrv\HPCHEM1\ECD\_P\Data\PP011223\  
 Data File : PP054508.D  
 Signal(s) : Signal #1: ECD1A.ch Signal #2: ECD2B.ch  
 Acq On : 12 Jan 2023 10:29  
 Operator : YP\AJ  
 Sample : PB150177BS  
 Misc :  
 ALS Vial : 8 Sample Multiplier: 1

Instrument :  
 ECD\_P  
 ClientSampleId :  
 PB150177BS

Integration File signal 1: autoint1.e  
 Integration File signal 2: autoint2.e  
 Quant Time: Jan 12 20:33:07 2023  
 Quant Method : Z:\pestpcbsrv\HPCHEM1\ECD\_P\methods\PP010423.M  
 Quant Title : GC EXTRACTABLES  
 QLast Update : Thu Jan 05 03:46:53 2023  
 Response via : Initial Calibration  
 Integrator: ChemStation

Volume Inj. : 2 µl  
 Signal #1 Phase : ZB-MR2 Signal #2 Phase: ZB-MR2  
 Signal #1 Info : 30Mx0.32mmx 0.50µ Signal #2 Info : 30M x 0.32mm x 0.25µm

Compound	RT#1	RT#2	Resp#1	Resp#2	ng/ml	ng/ml
-----						
System Monitoring Compounds						
1) SA Tetrachlo...	4.335	3.586	43097477	29094026	21.282	18.037
2) SA Decachlor...	10.092	8.603	27121352	31945187	18.884	22.646
Target Compounds						
3) L1 AR-1016-1	5.505	4.670	27468123	19970806	371.709	383.815
4) L1 AR-1016-2	5.528	4.689	38870236	27942075	364.231	390.129
5) L1 AR-1016-3	5.590	4.865	24018558	14993145	351.080	382.206
6) L1 AR-1016-4	5.689	4.907	16858834	13203660	323.807	383.673
7) L1 AR-1016-5	5.985	5.121	15890670	16453964	350.968	374.231
31) L7 AR-1260-1	7.116	6.157	28408828	32151362	364.429	379.538
32) L7 AR-1260-2	7.374	6.346	31901084	37589573	356.165	393.032
33) L7 AR-1260-3	7.735	6.499	21073435	35602422	308.379	389.503 #
34) L7 AR-1260-4	7.961	6.974	26170578	26543042	328.483	350.149
35) L7 AR-1260-5	8.278	7.216	44652164	57080778	311.340	360.345
-----						

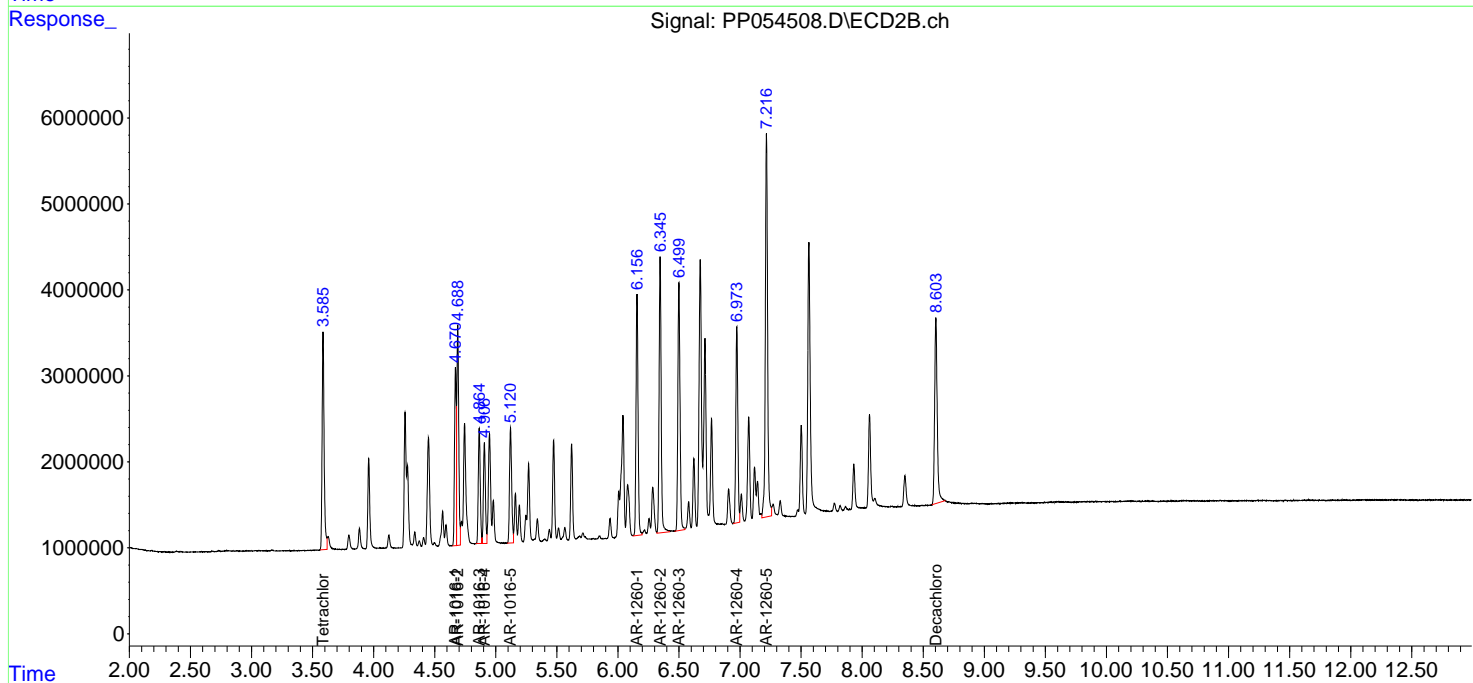
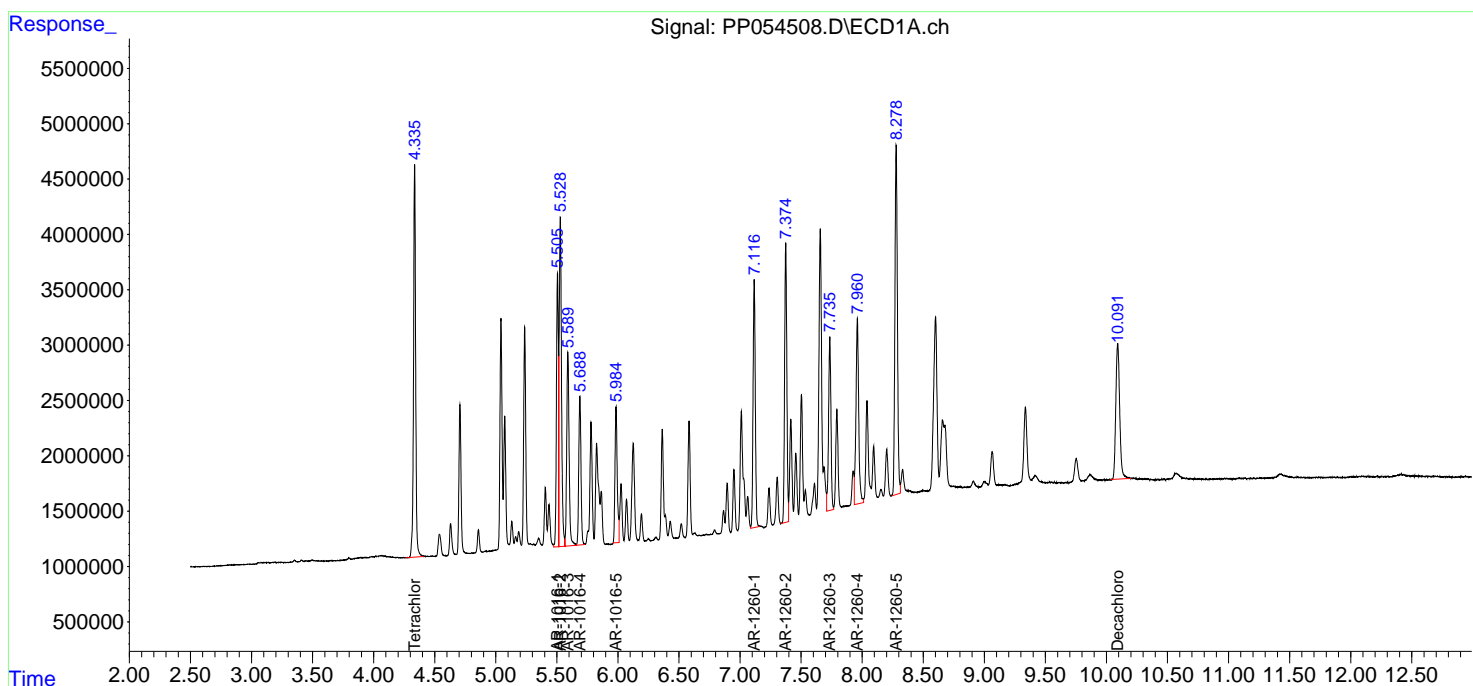
(f)=RT Delta > 1/2 Window (#)=Amounts differ by > 25% (m)=manual int.

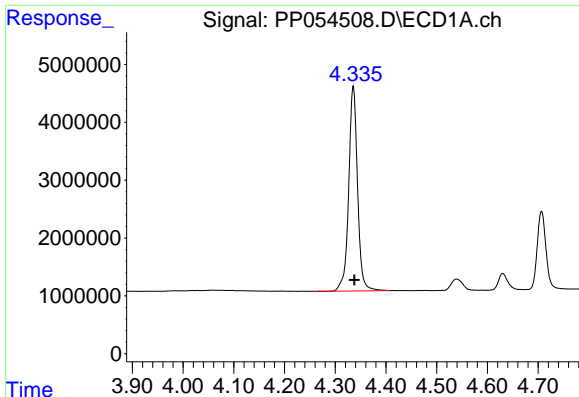
Data Path : Z:\pestpcbsrv\HPCHEM1\ECD\_P\Data\PP011223\  
 Data File : PP054508.D  
 Signal(s) : Signal #1: ECD1A.ch Signal #2: ECD2B.ch  
 Acq On : 12 Jan 2023 10:29  
 Operator : YP\AJ  
 Sample : PB150177BS  
 Misc :  
 ALS Vial : 8 Sample Multiplier: 1

Instrument :  
 ECD\_P  
 ClientSampleId :  
 PB150177BS

Integration File signal 1: autoint1.e  
 Integration File signal 2: autoint2.e  
 Quant Time: Jan 12 20:33:07 2023  
 Quant Method : Z:\pestpcbsrv\HPCHEM1\ECD\_P\methods\PP010423.M  
 Quant Title : GC EXTRACTABLES  
 QLast Update : Thu Jan 05 03:46:53 2023  
 Response via : Initial Calibration  
 Integrator: ChemStation

Volume Inj. : 2 µl  
 Signal #1 Phase : ZB-MR1 Signal #2 Phase: ZB-MR2  
 Signal #1 Info : 30Mx0.32mmx 0.50µ Signal #2 Info : 30M x 0.32mm x 0.25µm

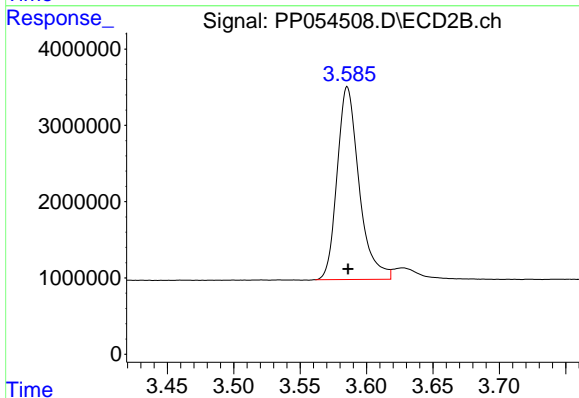




#1 Tetrachloro-m-xylene

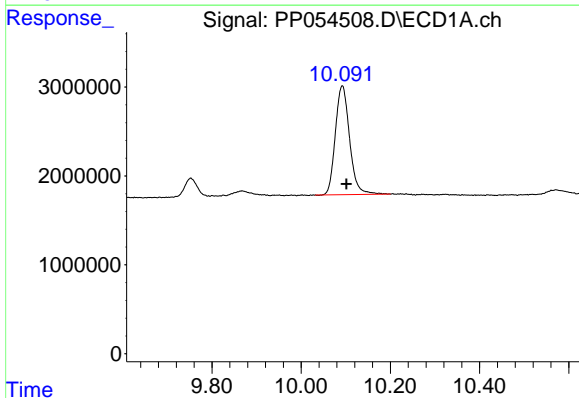
R.T.: 4.335 min  
 Delta R.T.: -0.003 min  
 Response: 43097477  
 Conc: 21.28 ng/ml

Instrument :  
 ECD\_P  
 ClientSampleId :  
 PB150177BS



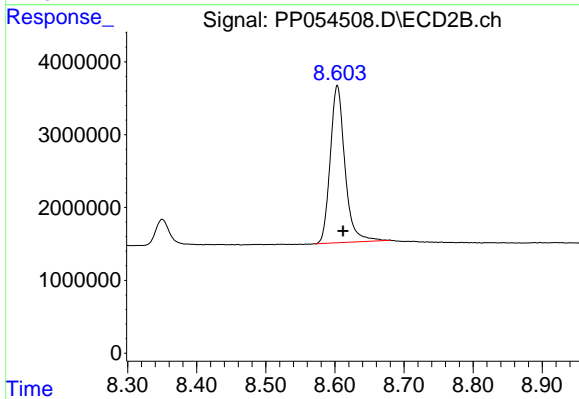
#1 Tetrachloro-m-xylene

R.T.: 3.586 min  
 Delta R.T.: 0.000 min  
 Response: 29094026  
 Conc: 18.04 ng/ml



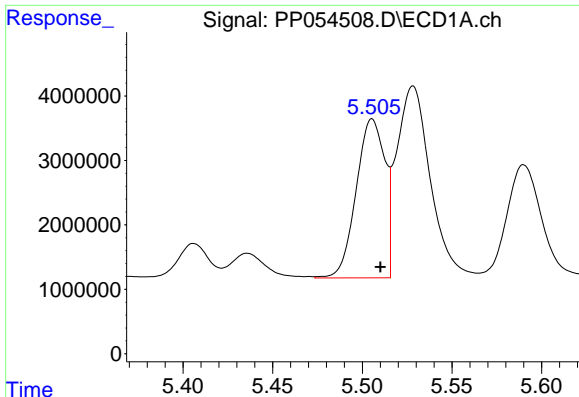
#2 Decachlorobiphenyl

R.T.: 10.092 min  
 Delta R.T.: -0.009 min  
 Response: 27121352  
 Conc: 18.88 ng/ml



#2 Decachlorobiphenyl

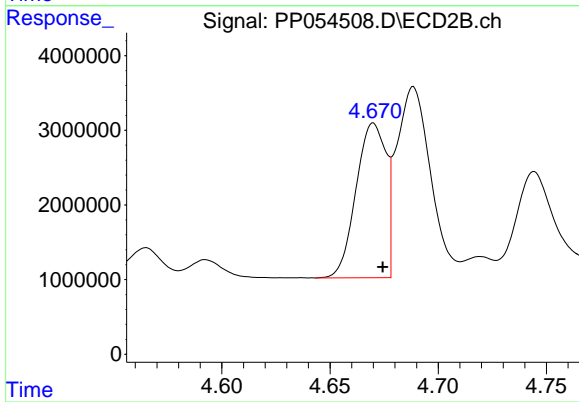
R.T.: 8.603 min  
 Delta R.T.: -0.008 min  
 Response: 31945187  
 Conc: 22.65 ng/ml



#3 AR-1016-1

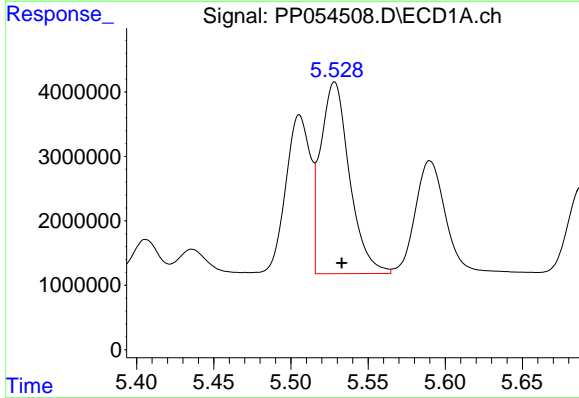
R.T.: 5.505 min  
 Delta R.T.: -0.005 min  
 Response: 27468123  
 Conc: 371.71 ng/ml

Instrument :  
 ECD\_P  
 ClientSampleId :  
 PB150177BS



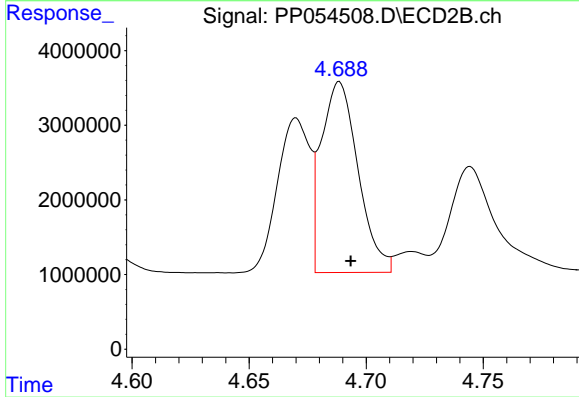
#3 AR-1016-1

R.T.: 4.670 min  
 Delta R.T.: -0.004 min  
 Response: 19970806  
 Conc: 383.81 ng/ml



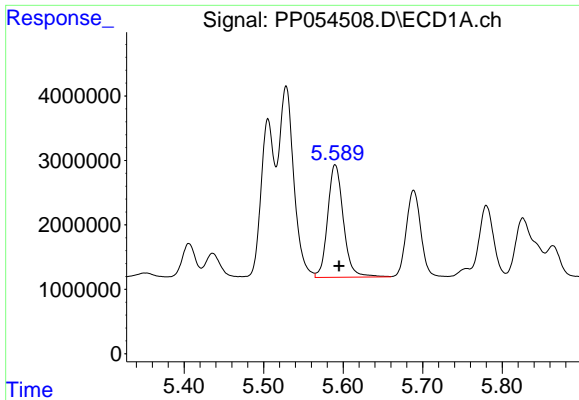
#4 AR-1016-2

R.T.: 5.528 min  
 Delta R.T.: -0.005 min  
 Response: 38870236  
 Conc: 364.23 ng/ml



#4 AR-1016-2

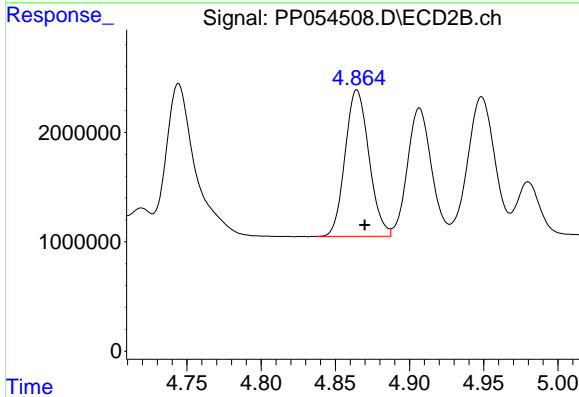
R.T.: 4.689 min  
 Delta R.T.: -0.005 min  
 Response: 27942075  
 Conc: 390.13 ng/ml



#5 AR-1016-3

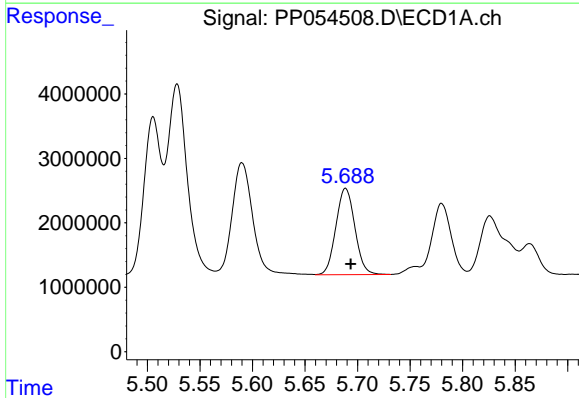
R.T.: 5.590 min  
 Delta R.T.: -0.005 min  
 Response: 24018558  
 Conc: 351.08 ng/ml

Instrument :  
 ECD\_P  
 ClientSampleId :  
 PB150177BS



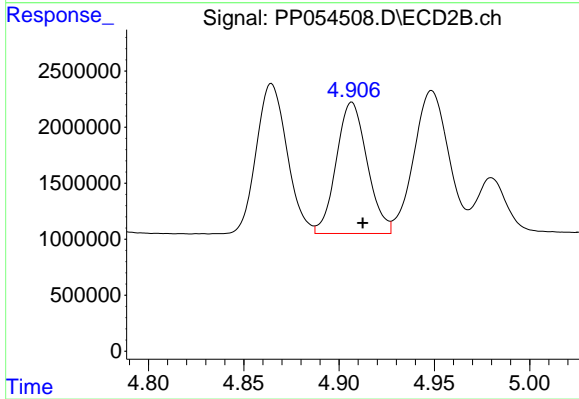
#5 AR-1016-3

R.T.: 4.865 min  
 Delta R.T.: -0.005 min  
 Response: 14993145  
 Conc: 382.21 ng/ml



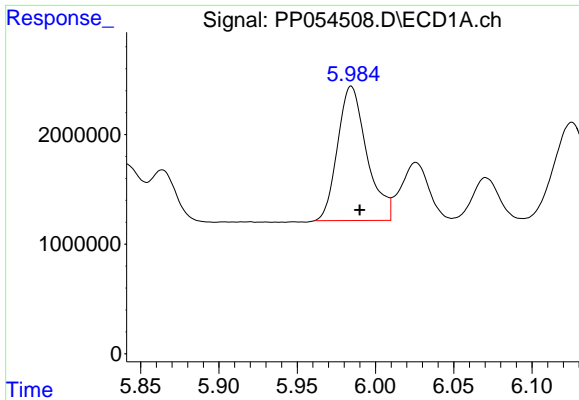
#6 AR-1016-4

R.T.: 5.689 min  
 Delta R.T.: -0.005 min  
 Response: 16858834  
 Conc: 323.81 ng/ml



#6 AR-1016-4

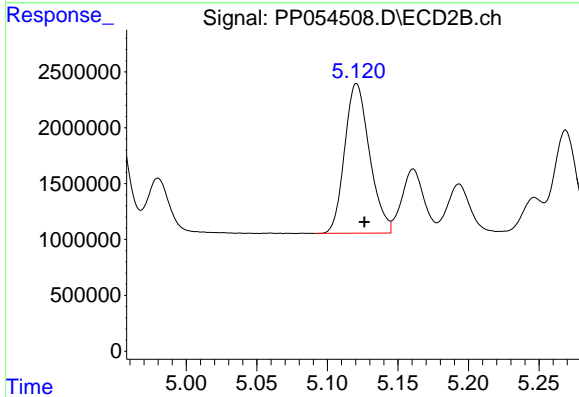
R.T.: 4.907 min  
 Delta R.T.: -0.006 min  
 Response: 13203660  
 Conc: 383.67 ng/ml



#7 AR-1016-5

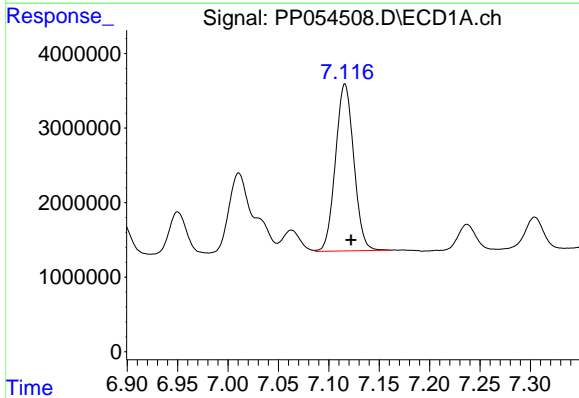
R.T.: 5.985 min  
 Delta R.T.: -0.005 min  
 Response: 15890670  
 Conc: 350.97 ng/ml

Instrument :  
 ECD\_P  
 ClientSampleId :  
 PB150177BS



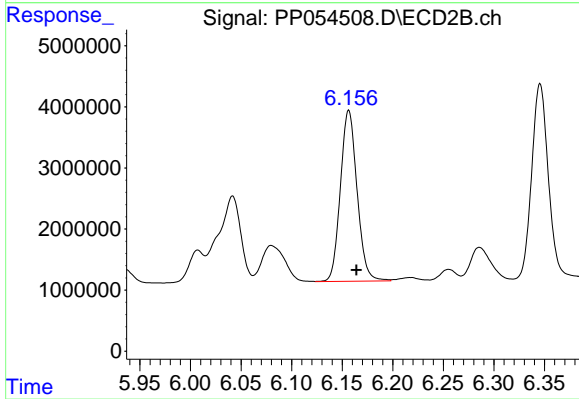
#7 AR-1016-5

R.T.: 5.121 min  
 Delta R.T.: -0.006 min  
 Response: 16453964  
 Conc: 374.23 ng/ml



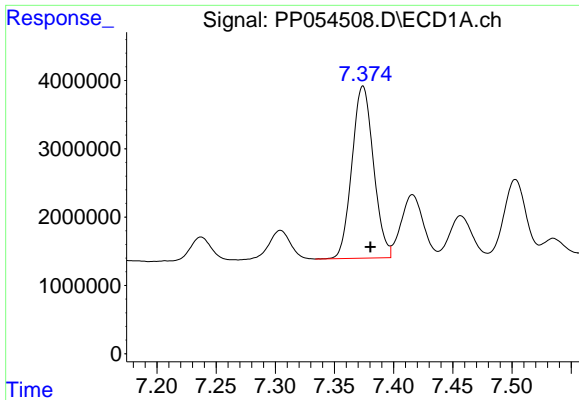
#31 AR-1260-1

R.T.: 7.116 min  
 Delta R.T.: -0.006 min  
 Response: 28408828  
 Conc: 364.43 ng/ml



#31 AR-1260-1

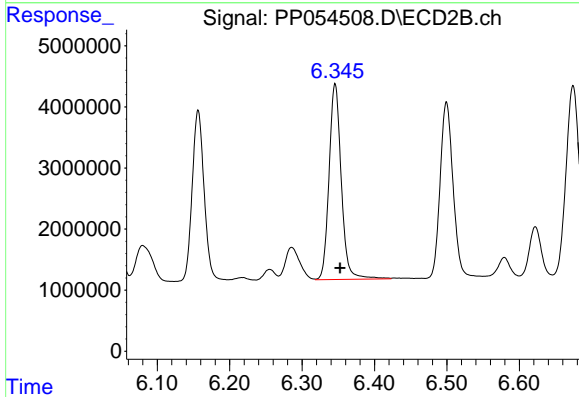
R.T.: 6.157 min  
 Delta R.T.: -0.008 min  
 Response: 32151362  
 Conc: 379.54 ng/ml



#32 AR-1260-2

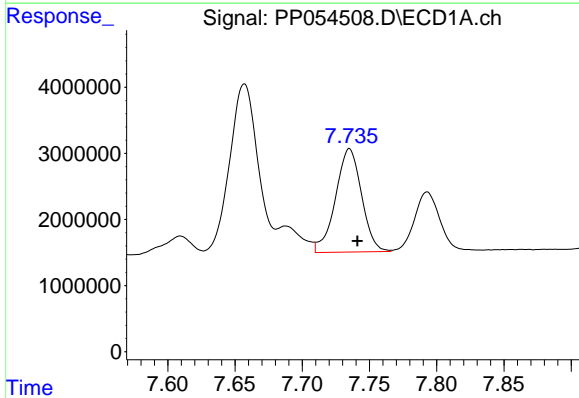
R.T.: 7.374 min  
 Delta R.T.: -0.006 min  
 Response: 31901084  
 Conc: 356.16 ng/ml

Instrument :  
 ECD\_P  
 ClientSampleId :  
 PB150177BS



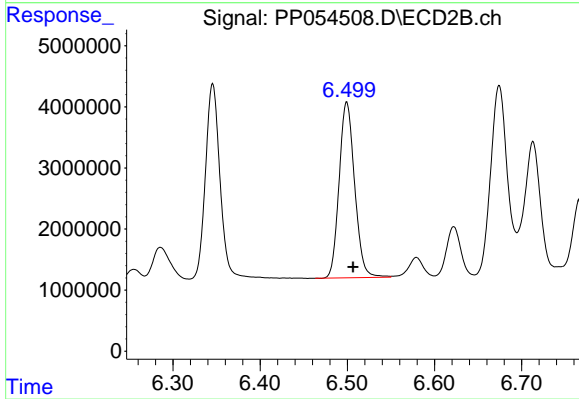
#32 AR-1260-2

R.T.: 6.346 min  
 Delta R.T.: -0.007 min  
 Response: 37589573  
 Conc: 393.03 ng/ml



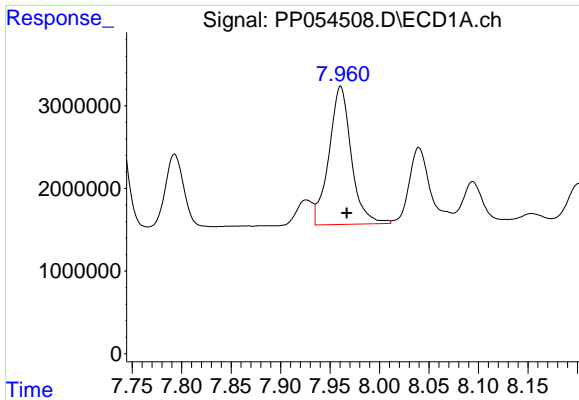
#33 AR-1260-3

R.T.: 7.735 min  
 Delta R.T.: -0.006 min  
 Response: 21073435  
 Conc: 308.38 ng/ml



#33 AR-1260-3

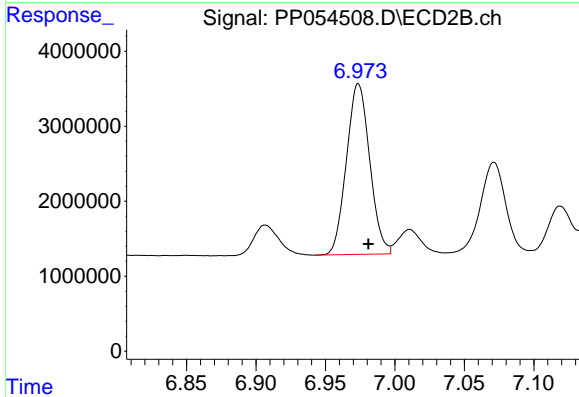
R.T.: 6.499 min  
 Delta R.T.: -0.007 min  
 Response: 35602422  
 Conc: 389.50 ng/ml



#34 AR-1260-4

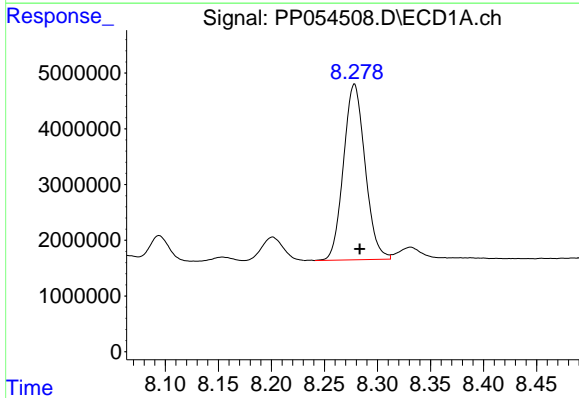
R.T.: 7.961 min  
 Delta R.T.: -0.006 min  
 Response: 26170578  
 Conc: 328.48 ng/ml

Instrument :  
 ECD\_P  
 ClientSampleId :  
 PB150177BS



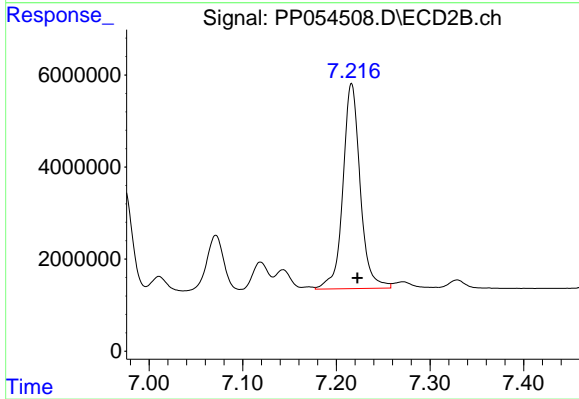
#34 AR-1260-4

R.T.: 6.974 min  
 Delta R.T.: -0.007 min  
 Response: 26543042  
 Conc: 350.15 ng/ml



#35 AR-1260-5

R.T.: 8.278 min  
 Delta R.T.: -0.005 min  
 Response: 44652164  
 Conc: 311.34 ng/ml



#35 AR-1260-5

R.T.: 7.216 min  
 Delta R.T.: -0.006 min  
 Response: 57080778  
 Conc: 360.34 ng/ml