

Data Path : Z:\pestpcbsrv\HPCHEM1\ECD_P\Data\PP011224\
 Data File : PP062877.D
 Signal(s) : Signal #1: ECD1A.ch Signal #2: ECD2B.ch
 Acq On : 12 Jan 2024 13:20
 Operator : YP\AJ
 Sample : PB158342BSD
 Misc :
 ALS Vial : 7 Sample Multiplier: 1

Instrument :
 ECD_P
 ClientSampleId :
 PB158342BSD

Integration File signal 1: autoint1.e
 Integration File signal 2: autoint2.e
 Quant Time: Jan 13 05:44:34 2024
 Quant Method : Z:\pestpcbsrv\HPCHEM1\ECD_P\methods\PP011024.M
 Quant Title : GC EXTRACTABLES
 QLast Update : Thu Jan 11 02:58:31 2024
 Response via : Initial Calibration
 Integrator: ChemStation

Volume Inj. : 2 µl
 Signal #1 Phase : ZB-MR1 Signal #2 Phase: ZB-MR2
 Signal #1 Info : 30Mx0.32mmx 0.50µ Signal #2 Info : 30M x 0.32mm x 0.25µm

Compound	RT#1	RT#2	Resp#1	Resp#2	ng/ml	ng/ml
System Monitoring Compounds						
1) SA Tetrachlo...	4.397	3.682	54082470	68504050	20.855	19.633
2) SA Decachlor...	10.156	8.783	37079862	52271786	23.447	22.402
Target Compounds						
3) L1 AR-1016-1	5.570	4.789	42007160	54618596	525.735	509.398
4) L1 AR-1016-2	5.592	4.809	61969024	76843567	522.229	513.880
5) L1 AR-1016-3	5.654	4.988	38011374	41214455	525.765	503.544
6) L1 AR-1016-4	5.753	5.031	31209674	33850666	508.915	502.833
7) L1 AR-1016-5	6.050	5.247	31317125	43101005	505.084	479.513
8) L2 AR-1221-1	4.602	3.899	4079989	5626444	129.602	138.960
9) L2 AR-1221-2	4.693	3.987	5478608	7044987	223.926	227.922
10) L2 AR-1221-3	4.769	4.065	22814234	29553385	329.992	334.537
11) L3 AR-1232-1	4.769	4.065	22814234	29553385	397.185	398.094
12) L3 AR-1232-2	5.300	4.809	32914881	76843567	984.077	1098.254
13) L3 AR-1232-3	5.592	4.988	61969024	41214455	1107.366	1069.889
14) L3 AR-1232-4	5.753	5.073	31209674	41361318	1088.729	1132.561
15) L3 AR-1232-5	5.845	5.247	26294670	43101005	1191.699	1090.754
16) L4 AR-1242-1	5.570	4.789	42007160	54618596	634.781	626.812
17) L4 AR-1242-2	5.592	4.809	61969024	76843567	642.893	636.726
18) L4 AR-1242-3	5.654	4.988	38011374	41214455	641.748	618.943
19) L4 AR-1242-4	5.753	5.073	31209674	41361318	627.998	600.674
20) L4 AR-1242-5	6.494	5.605	4655885	34286250	94.494	433.015 #
21) L5 AR-1248-1	5.570	4.789	42007160	54618596	842.866	831.289
22) L5 AR-1248-2	5.845	5.031	26294670	33850666	333.727	347.296
23) L5 AR-1248-3	6.050	5.073	31317125	41361318	368.956	405.420
24) L5 AR-1248-4	6.454	5.247	4499944	43101005	52.781	360.468 #
25) L5 AR-1248-5	6.494	5.647	4655885	5211629	55.436	48.066
26) L6 AR-1254-1	6.428	5.605	23660074	34286250	252.752	196.296
27) L6 AR-1254-2	6.648	5.755	24846224	32782581	178.144	216.399
28) L6 AR-1254-3	7.016	6.180	12847379	59089912	93.724	246.550 #
29) L6 AR-1254-4	7.302	6.396	7778503	6445767	86.768	47.358 #
30) L6 AR-1254-5	7.723	6.819	64619587	110.7E6	694.276	546.080
31) L7 AR-1260-1	7.181	6.297	50950425	81497572	493.208	483.152
32) L7 AR-1260-2	7.440	6.487	55755610	95620334	493.675	491.875
33) L7 AR-1260-3	7.801	6.643	35396061	91169446	416.278	492.682
34) L7 AR-1260-4	8.026	7.120	42598984	65926929	495.767	444.112
35) L7 AR-1260-5	8.346	7.365	76106101	152.3E6	479.065	480.640
36) L8 AR-1262-1	7.859	6.912	19743579	38025109	377.518	390.759
37) L8 AR-1262-2	8.346	7.120	76106101	65926929	384.602	327.931
38) L8 AR-1262-3	8.669	7.651	51140196	27149845	365.330	200.561 #
39) L8 AR-1262-4	8.745	7.715	12158061	105.7E6	113.891	397.020 #
40) L8 AR-1262-5	9.402	8.218	20450900	31818526	275.993	274.980
41) L9 AR-1268-1	8.669	7.651	51140196	27149845	231.604	70.597 #

Data Path : Z:\pestpcbsrv\HPCHEM1\ECD_P\Data\PP011224\
 Data File : PP062877.D
 Signal(s) : Signal #1: ECD1A.ch Signal #2: ECD2B.ch
 Acq On : 12 Jan 2024 13:20
 Operator : YP\AJ
 Sample : PB158342BSD
 Misc :
 ALS Vial : 7 Sample Multiplier: 1

Instrument :
 ECD_P
 ClientSampleId :
 PB158342BSD

Integration File signal 1: autoint1.e
 Integration File signal 2: autoint2.e
 Quant Time: Jan 13 05:44:34 2024
 Quant Method : Z:\pestpcbsrv\HPCHEM1\ECD_P\methods\PP011024.M
 Quant Title : GC EXTRACTABLES
 QLast Update : Thu Jan 11 02:58:31 2024
 Response via : Initial Calibration
 Integrator: ChemStation

Volume Inj. : 2 µl
 Signal #1 Phase : ZB-MR1 Signal #2 Phase: ZB-MR2
 Signal #1 Info : 30Mx0.32mmx 0.50µ Signal #2 Info : 30M x 0.32mm x 0.25µm

	Compound	RT#1	RT#2	Resp#1	Resp#2	ng/ml	ng/ml
42)	L9 AR-1268-2	8.745	7.715	12158061	105.7E6	60.863	300.972 #
43)	L9 AR-1268-3	8.976	7.925	1467709	2794129	8.288	9.026
44)	L9 AR-1268-4	9.402	8.218	20450900	31818526	278.239	263.273
45)	L9 AR-1268-5	9.816	8.519	7279603	11319291	13.473	13.654

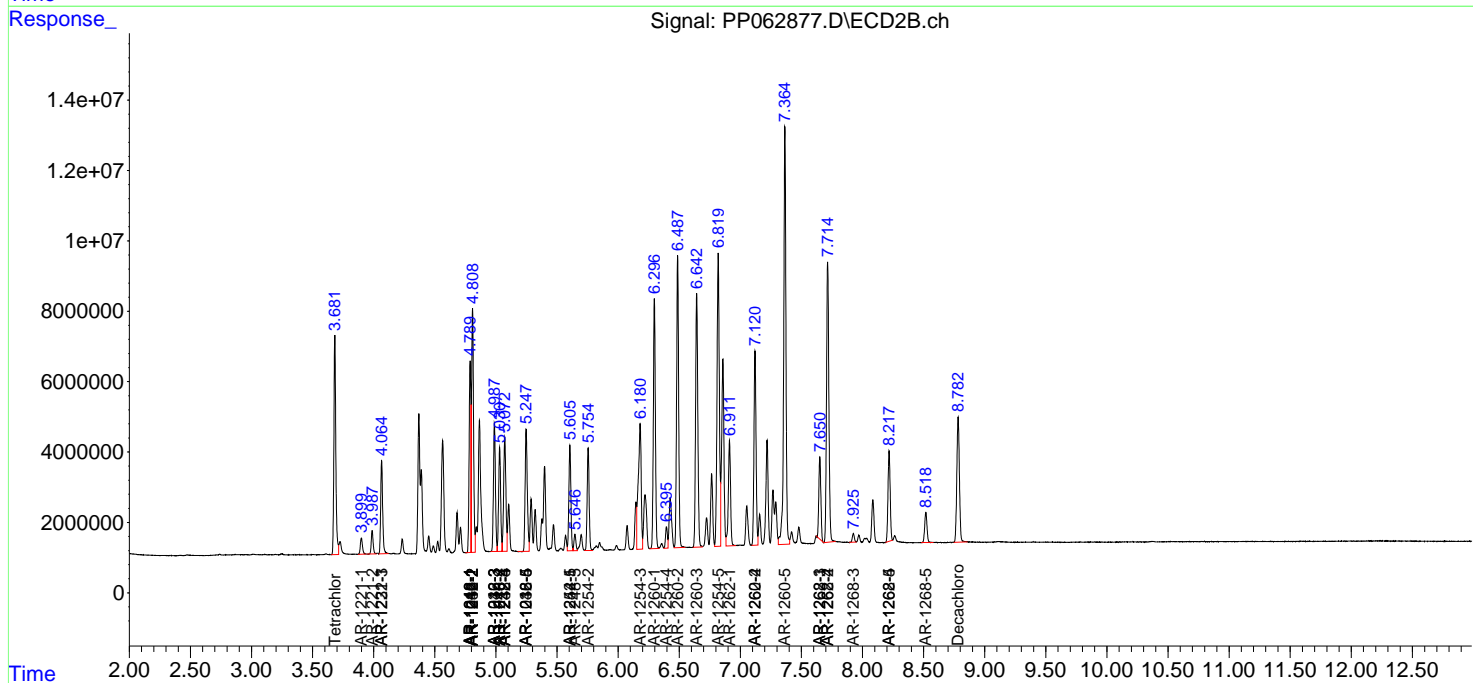
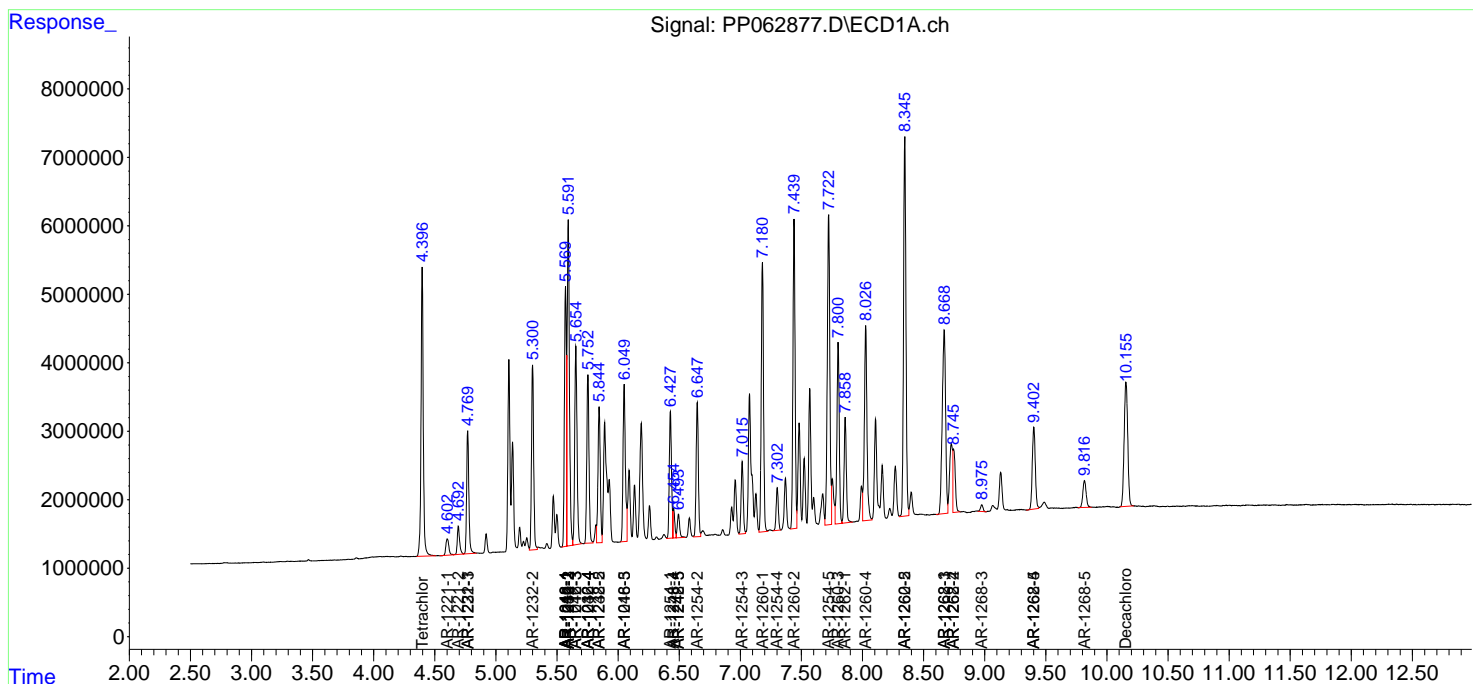
(f)=RT Delta > 1/2 Window (#)=Amounts differ by > 25% (m)=manual int.

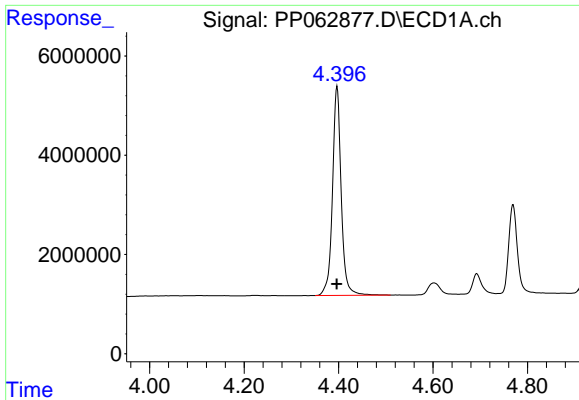
Data Path : Z:\pestpcbsrv\HPCHEM1\ECD_P\Data\PP011224\
 Data File : PP062877.D
 Signal(s) : Signal #1: ECD1A.ch Signal #2: ECD2B.ch
 Acq On : 12 Jan 2024 13:20
 Operator : YP\AJ
 Sample : PB158342BSD
 Misc :
 ALS Vial : 7 Sample Multiplier: 1

Instrument :
 ECD_P
 ClientSampleId :
 PB158342BSD

Integration File signal 1: autoint1.e
 Integration File signal 2: autoint2.e
 Quant Time: Jan 13 05:44:34 2024
 Quant Method : Z:\pestpcbsrv\HPCHEM1\ECD_P\methods\PP011024.M
 Quant Title : GC EXTRACTABLES
 QLast Update : Thu Jan 11 02:58:31 2024
 Response via : Initial Calibration
 Integrator: ChemStation

Volume Inj. : 2 µl
 Signal #1 Phase : ZB-MR1 Signal #2 Phase: ZB-MR2
 Signal #1 Info : 30Mx0.32mmx 0.50µ Signal #2 Info : 30M x 0.32mm x 0.25µm

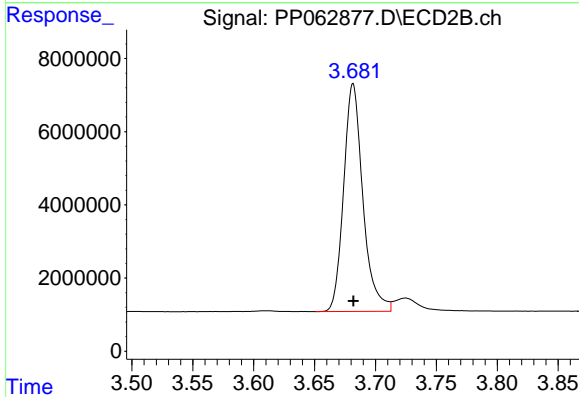




#1 Tetrachloro-m-xylene

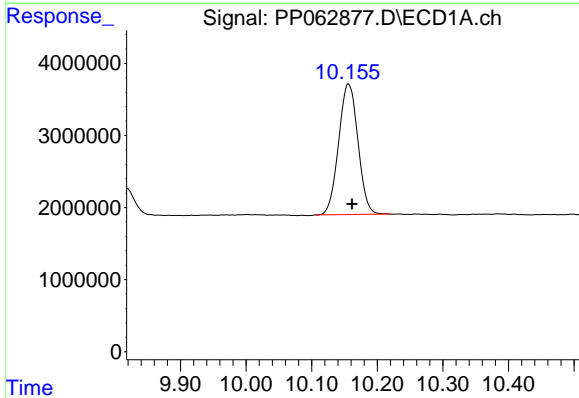
R.T.: 4.397 min
 Delta R.T.: 0.000 min
 Response: 54082470
 Conc: 20.85 ng/ml

Instrument :
 ECD_P
 ClientSampleId :
 PB158342BSD



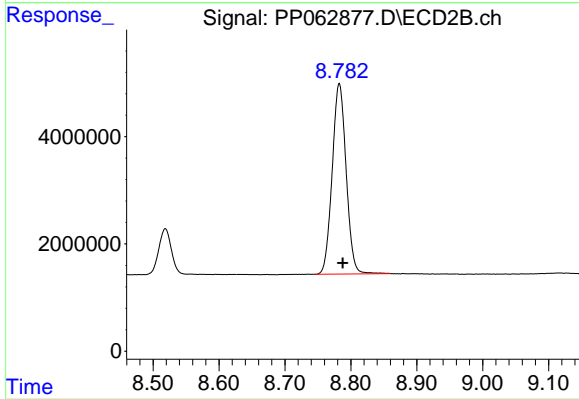
#1 Tetrachloro-m-xylene

R.T.: 3.682 min
 Delta R.T.: 0.000 min
 Response: 68504050
 Conc: 19.63 ng/ml



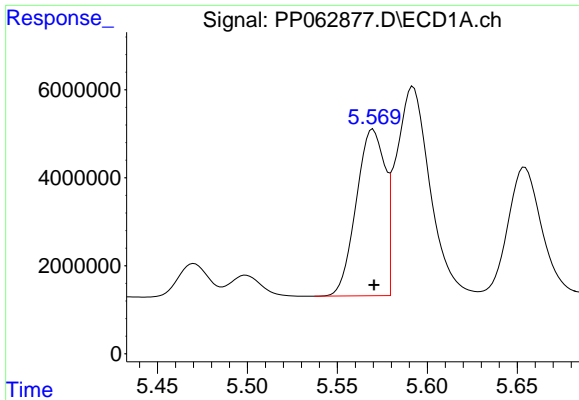
#2 Decachlorobiphenyl

R.T.: 10.156 min
 Delta R.T.: -0.005 min
 Response: 37079862
 Conc: 23.45 ng/ml



#2 Decachlorobiphenyl

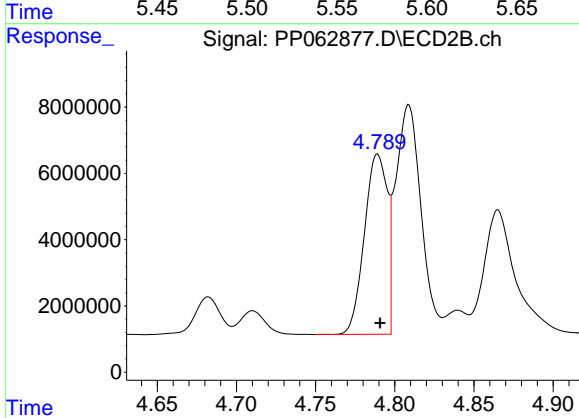
R.T.: 8.783 min
 Delta R.T.: -0.005 min
 Response: 52271786
 Conc: 22.40 ng/ml



#3 AR-1016-1

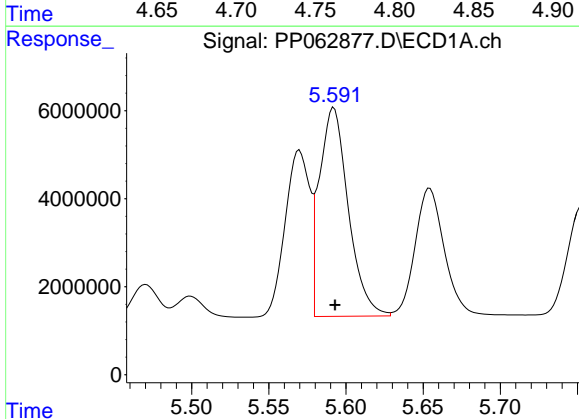
R.T.: 5.570 min
 Delta R.T.: 0.000 min
 Response: 42007160
 Conc: 525.73 ng/ml

Instrument :
 ECD_P
 ClientSampleId :
 PB158342BSD



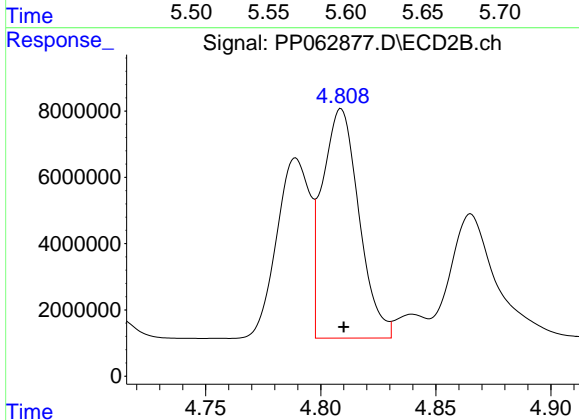
#3 AR-1016-1

R.T.: 4.789 min
 Delta R.T.: -0.002 min
 Response: 54618596
 Conc: 509.40 ng/ml



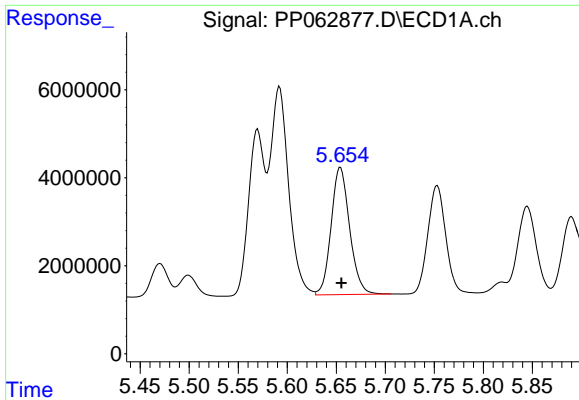
#4 AR-1016-2

R.T.: 5.592 min
 Delta R.T.: 0.000 min
 Response: 61969024
 Conc: 522.23 ng/ml



#4 AR-1016-2

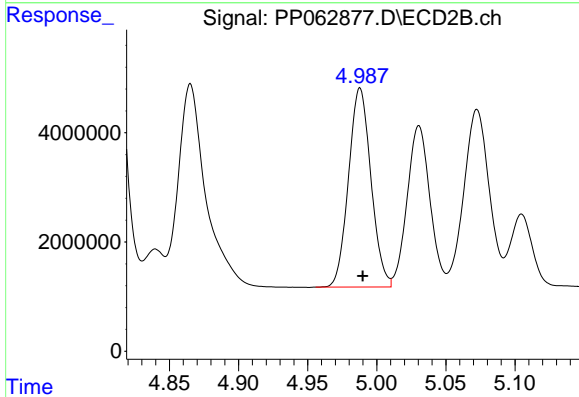
R.T.: 4.809 min
 Delta R.T.: -0.001 min
 Response: 76843567
 Conc: 513.88 ng/ml



#5 AR-1016-3

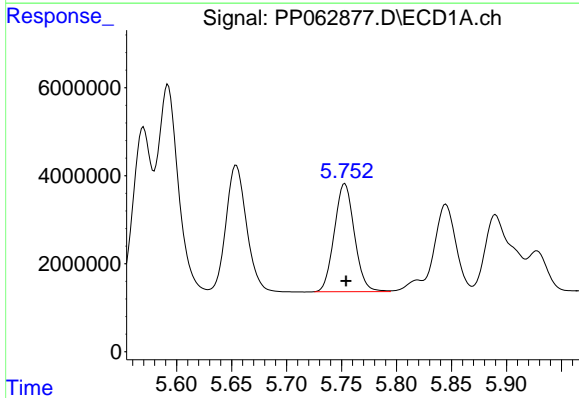
R.T.: 5.654 min
 Delta R.T.: -0.001 min
 Response: 38011374
 Conc: 525.77 ng/ml

Instrument :
 ECD_P
 ClientSampleId :
 PB158342BSD



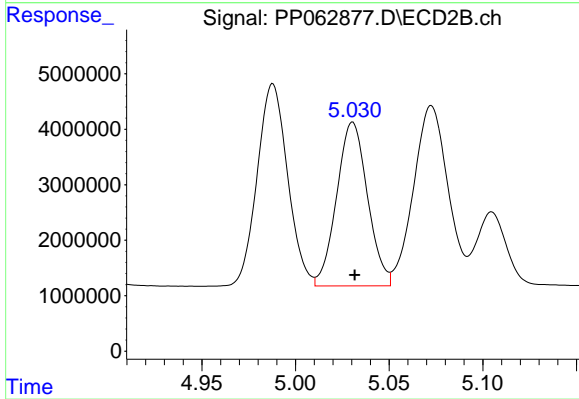
#5 AR-1016-3

R.T.: 4.988 min
 Delta R.T.: -0.002 min
 Response: 41214455
 Conc: 503.54 ng/ml



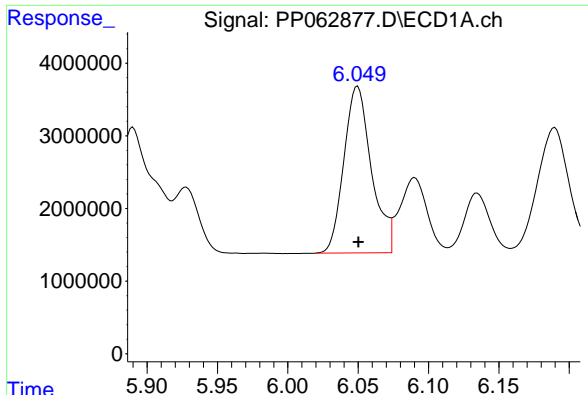
#6 AR-1016-4

R.T.: 5.753 min
 Delta R.T.: 0.000 min
 Response: 31209674
 Conc: 508.92 ng/ml



#6 AR-1016-4

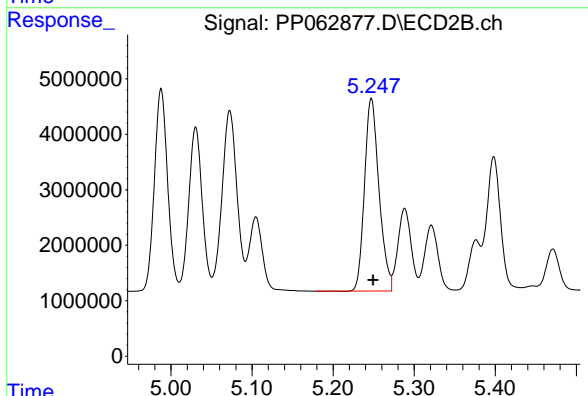
R.T.: 5.031 min
 Delta R.T.: -0.001 min
 Response: 33850666
 Conc: 502.83 ng/ml



#7 AR-1016-5

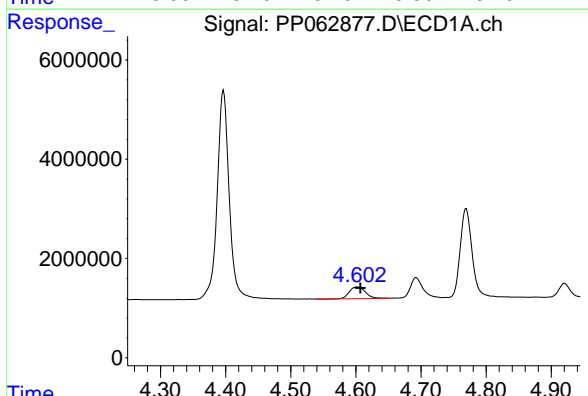
R.T.: 6.050 min
 Delta R.T.: 0.000 min
 Response: 31317125
 Conc: 505.08 ng/ml

Instrument :
 ECD_P
 ClientSampleId :
 PB158342BSD



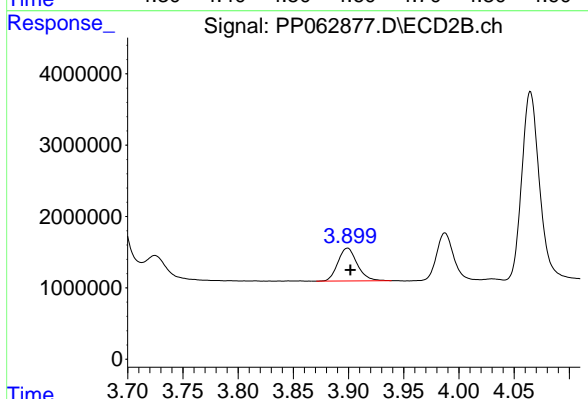
#7 AR-1016-5

R.T.: 5.247 min
 Delta R.T.: -0.002 min
 Response: 43101005
 Conc: 479.51 ng/ml



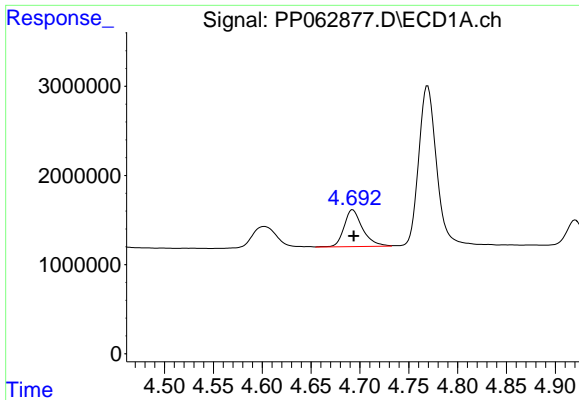
#8 AR-1221-1

R.T.: 4.602 min
 Delta R.T.: -0.005 min
 Response: 4079989
 Conc: 129.60 ng/ml



#8 AR-1221-1

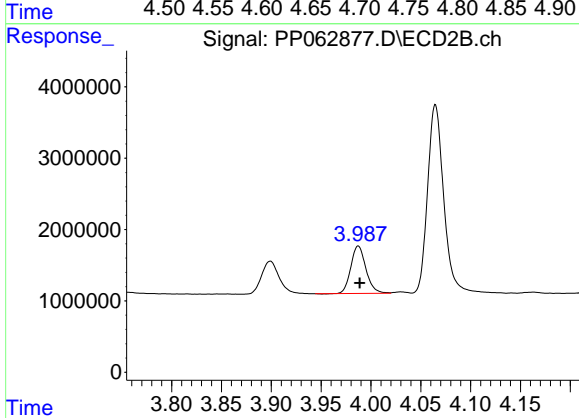
R.T.: 3.899 min
 Delta R.T.: -0.002 min
 Response: 5626444
 Conc: 138.96 ng/ml



#9 AR-1221-2

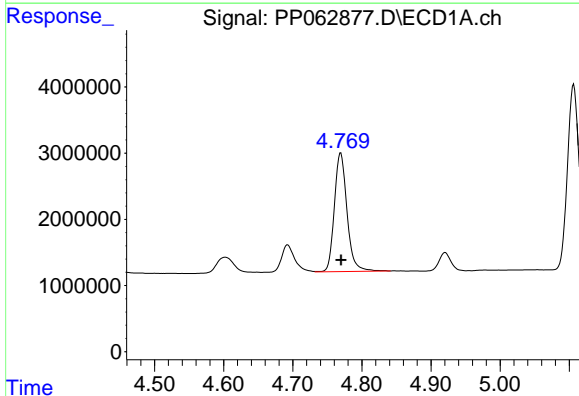
R.T.: 4.693 min
 Delta R.T.: -0.001 min
 Response: 5478608
 Conc: 223.93 ng/ml

Instrument :
 ECD_P
 ClientSampleId :
 PB158342BSD



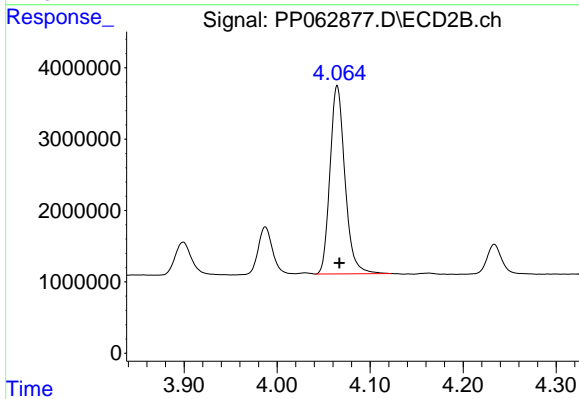
#9 AR-1221-2

R.T.: 3.987 min
 Delta R.T.: -0.001 min
 Response: 7044987
 Conc: 227.92 ng/ml



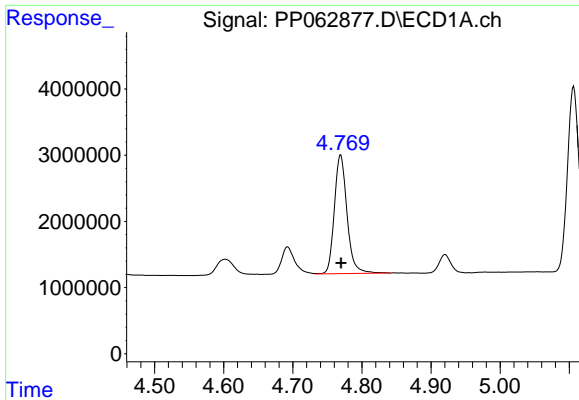
#10 AR-1221-3

R.T.: 4.769 min
 Delta R.T.: 0.000 min
 Response: 22814234
 Conc: 329.99 ng/ml



#10 AR-1221-3

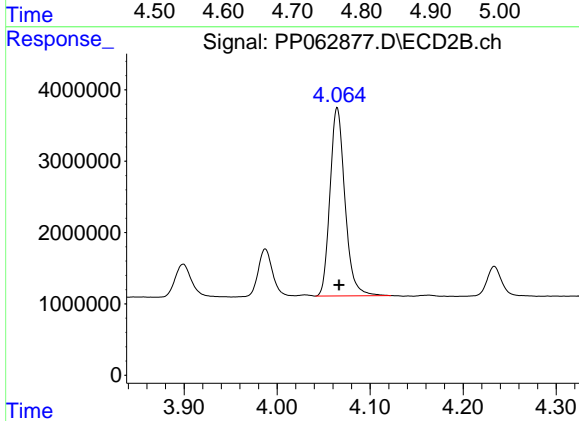
R.T.: 4.065 min
 Delta R.T.: -0.002 min
 Response: 29553385
 Conc: 334.54 ng/ml



#11 AR-1232-1

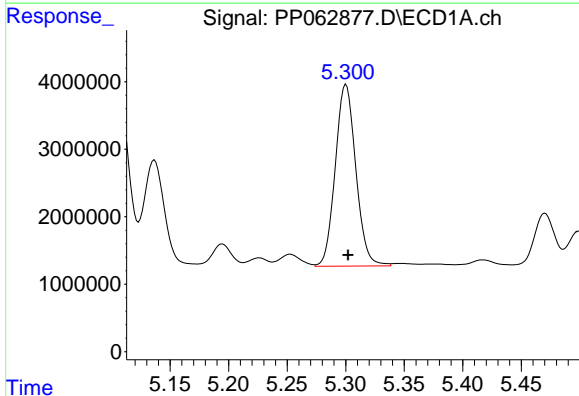
R.T.: 4.769 min
 Delta R.T.: 0.000 min
 Response: 22814234
 Conc: 397.19 ng/ml

Instrument :
 ECD_P
 ClientSampleId :
 PB158342BSD



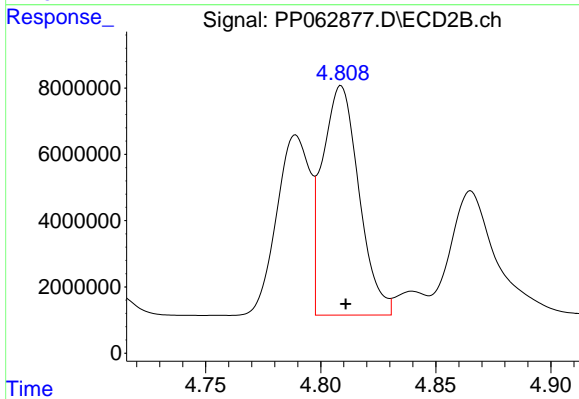
#11 AR-1232-1

R.T.: 4.065 min
 Delta R.T.: -0.002 min
 Response: 29553385
 Conc: 398.09 ng/ml



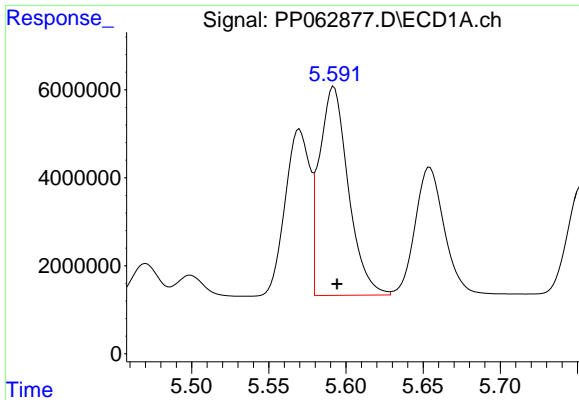
#12 AR-1232-2

R.T.: 5.300 min
 Delta R.T.: -0.002 min
 Response: 32914881
 Conc: 984.08 ng/ml



#12 AR-1232-2

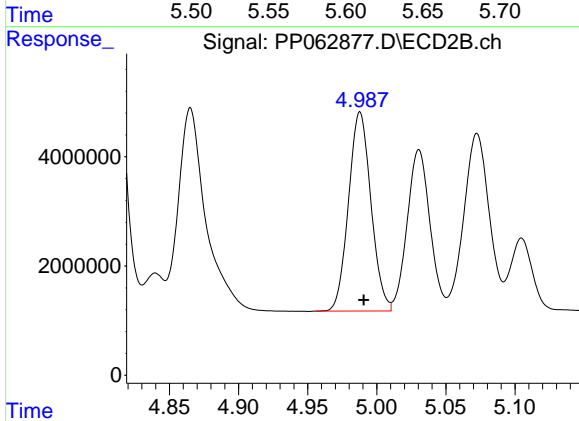
R.T.: 4.809 min
 Delta R.T.: -0.002 min
 Response: 76843567
 Conc: 1098.25 ng/ml



#13 AR-1232-3

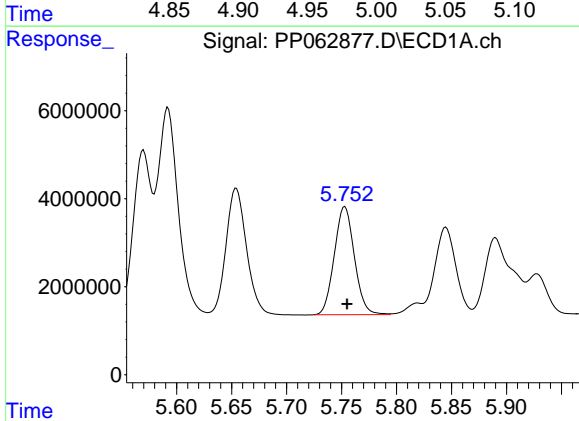
R.T.: 5.592 min
 Delta R.T.: -0.002 min
 Response: 61969024
 Conc: 1107.37 ng/ml

Instrument :
 ECD_P
 ClientSampleId :
 PB158342BSD



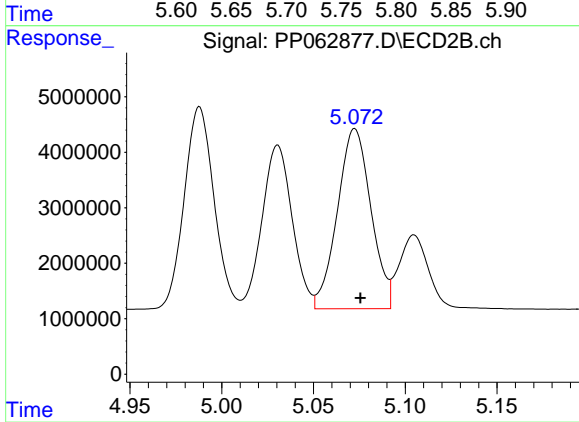
#13 AR-1232-3

R.T.: 4.988 min
 Delta R.T.: -0.003 min
 Response: 41214455
 Conc: 1069.89 ng/ml



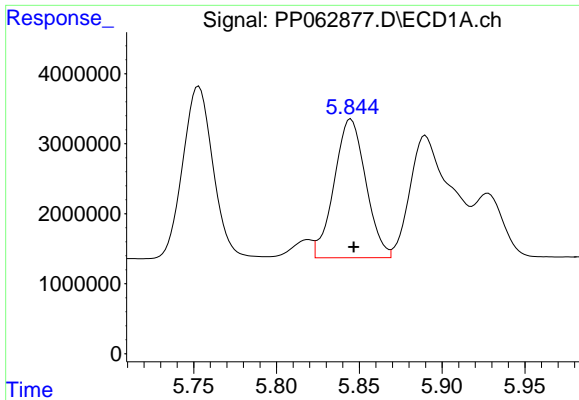
#14 AR-1232-4

R.T.: 5.753 min
 Delta R.T.: -0.002 min
 Response: 31209674
 Conc: 1088.73 ng/ml



#14 AR-1232-4

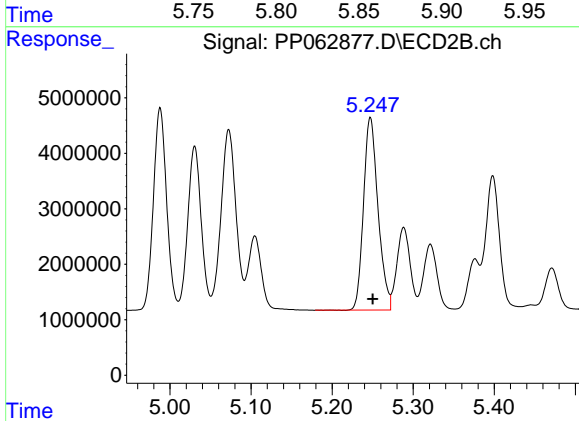
R.T.: 5.073 min
 Delta R.T.: -0.003 min
 Response: 41361318
 Conc: 1132.56 ng/ml



#15 AR-1232-5

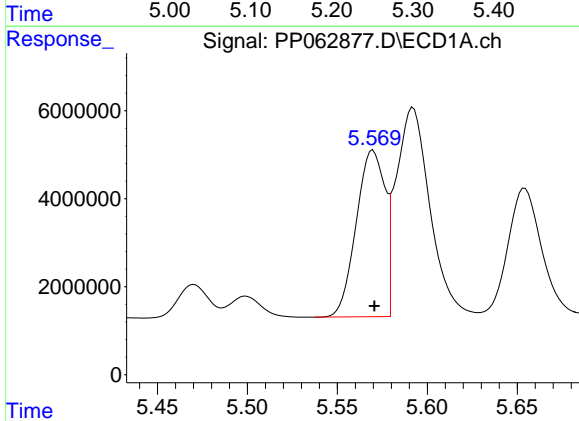
R.T.: 5.845 min
 Delta R.T.: -0.002 min
 Response: 26294670
 Conc: 1191.70 ng/ml

Instrument :
 ECD_P
 ClientSampleId :
 PB158342BSD



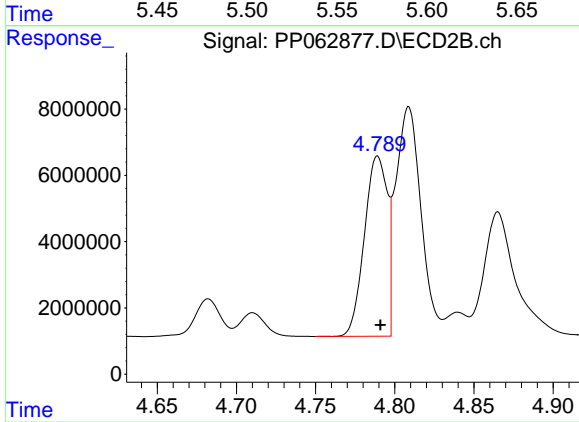
#15 AR-1232-5

R.T.: 5.247 min
 Delta R.T.: -0.003 min
 Response: 43101005
 Conc: 1090.75 ng/ml



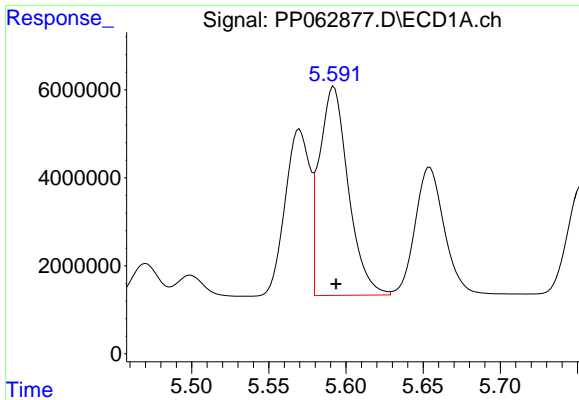
#16 AR-1242-1

R.T.: 5.570 min
 Delta R.T.: 0.000 min
 Response: 42007160
 Conc: 634.78 ng/ml



#16 AR-1242-1

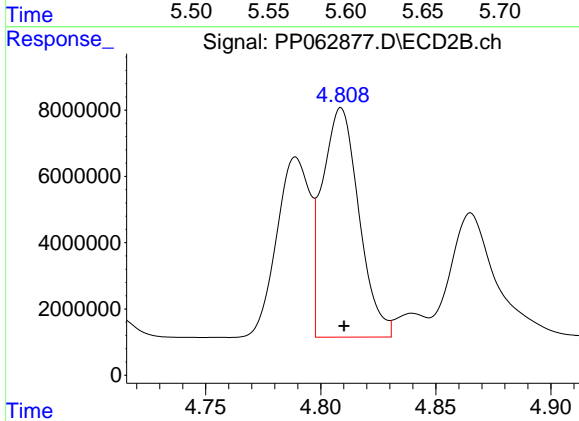
R.T.: 4.789 min
 Delta R.T.: -0.002 min
 Response: 54618596
 Conc: 626.81 ng/ml



#17 AR-1242-2

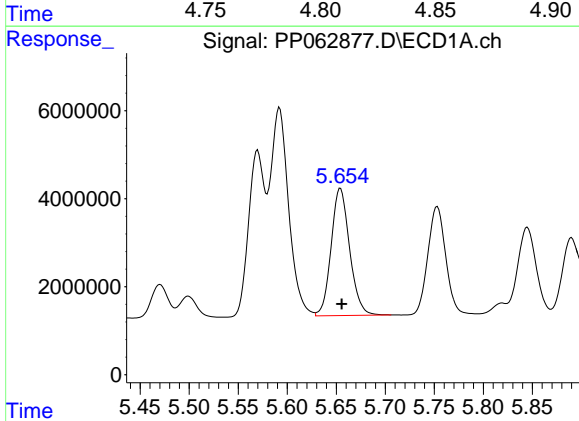
R.T.: 5.592 min
 Delta R.T.: -0.001 min
 Response: 61969024
 Conc: 642.89 ng/ml

Instrument :
 ECD_P
 ClientSampleId :
 PB158342BSD



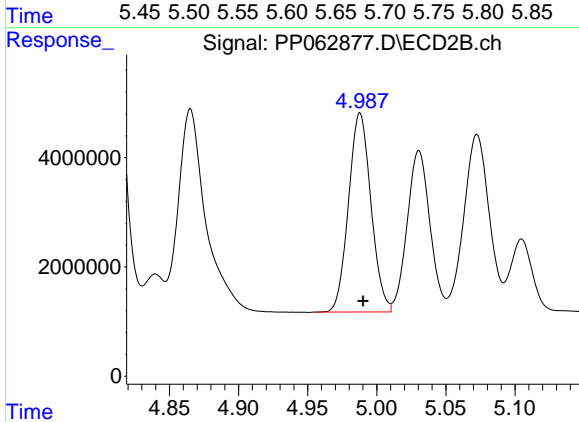
#17 AR-1242-2

R.T.: 4.809 min
 Delta R.T.: -0.001 min
 Response: 76843567
 Conc: 636.73 ng/ml



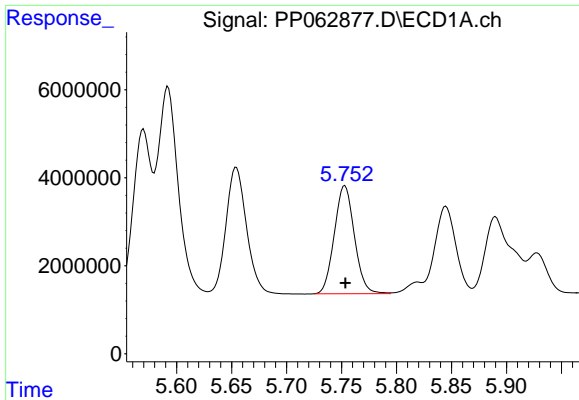
#18 AR-1242-3

R.T.: 5.654 min
 Delta R.T.: -0.001 min
 Response: 38011374
 Conc: 641.75 ng/ml



#18 AR-1242-3

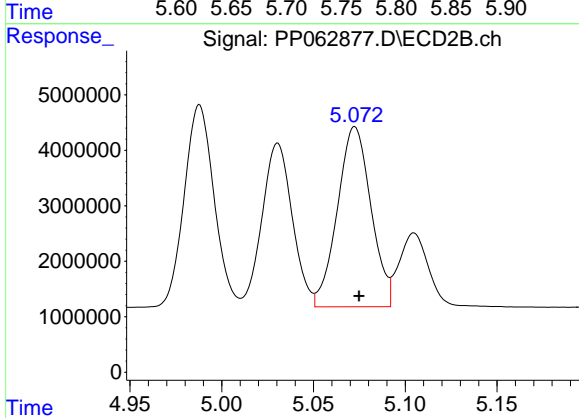
R.T.: 4.988 min
 Delta R.T.: -0.002 min
 Response: 41214455
 Conc: 618.94 ng/ml



#19 AR-1242-4

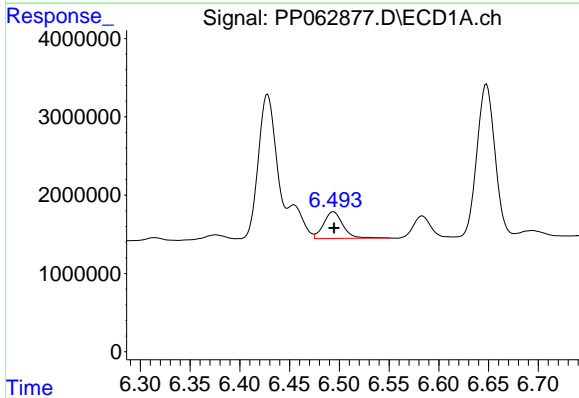
R.T.: 5.753 min
 Delta R.T.: 0.000 min
 Response: 31209674
 Conc: 628.00 ng/ml

Instrument :
 ECD_P
 ClientSampleId :
 PB158342BSD



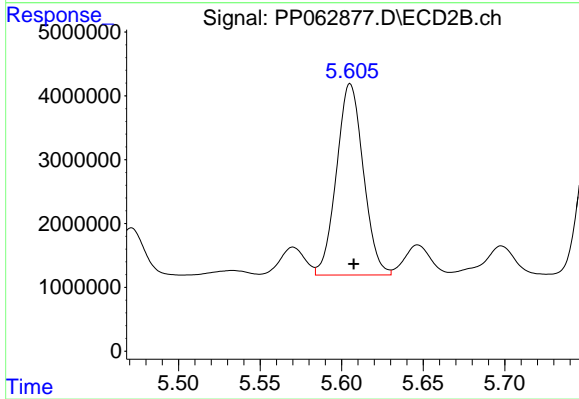
#19 AR-1242-4

R.T.: 5.073 min
 Delta R.T.: -0.002 min
 Response: 41361318
 Conc: 600.67 ng/ml



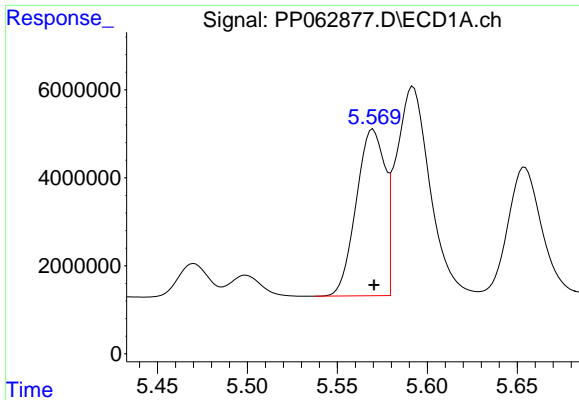
#20 AR-1242-5

R.T.: 6.494 min
 Delta R.T.: 0.000 min
 Response: 4655885
 Conc: 94.49 ng/ml



#20 AR-1242-5

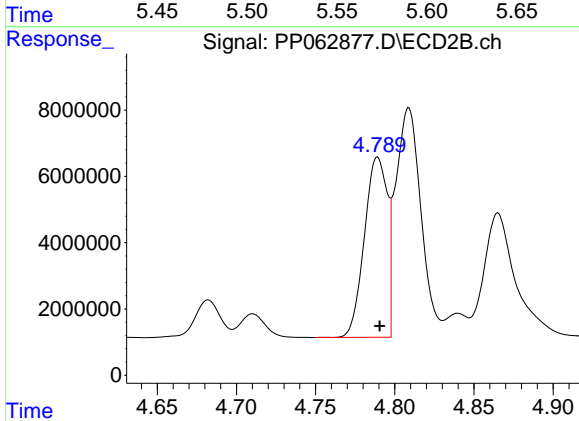
R.T.: 5.605 min
 Delta R.T.: -0.002 min
 Response: 34286250
 Conc: 433.01 ng/ml



#21 AR-1248-1

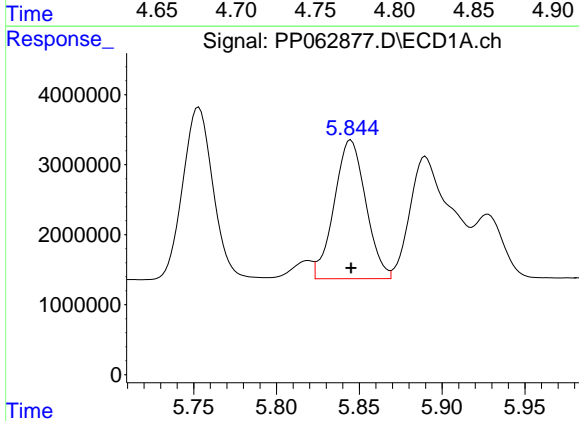
R.T.: 5.570 min
 Delta R.T.: 0.000 min
 Response: 42007160
 Conc: 842.87 ng/ml

Instrument :
 ECD_P
 ClientSampleId :
 PB158342BSD



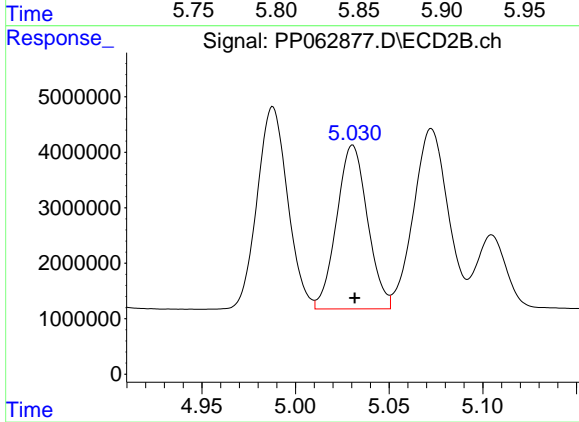
#21 AR-1248-1

R.T.: 4.789 min
 Delta R.T.: -0.001 min
 Response: 54618596
 Conc: 831.29 ng/ml



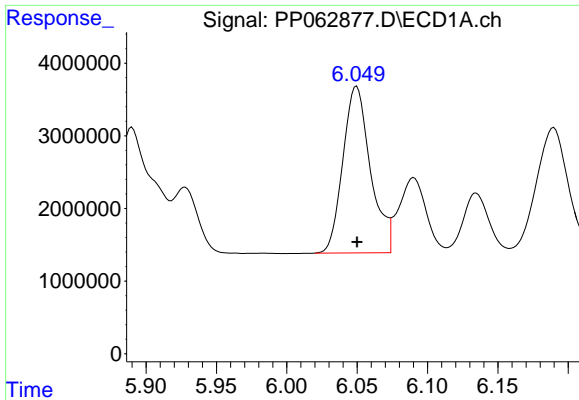
#22 AR-1248-2

R.T.: 5.845 min
 Delta R.T.: 0.000 min
 Response: 26294670
 Conc: 333.73 ng/ml



#22 AR-1248-2

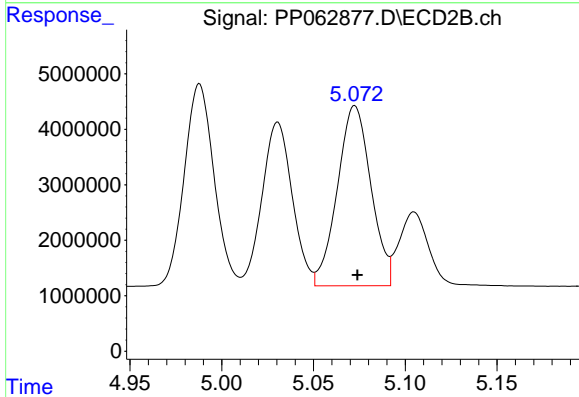
R.T.: 5.031 min
 Delta R.T.: -0.001 min
 Response: 33850666
 Conc: 347.30 ng/ml



#23 AR-1248-3

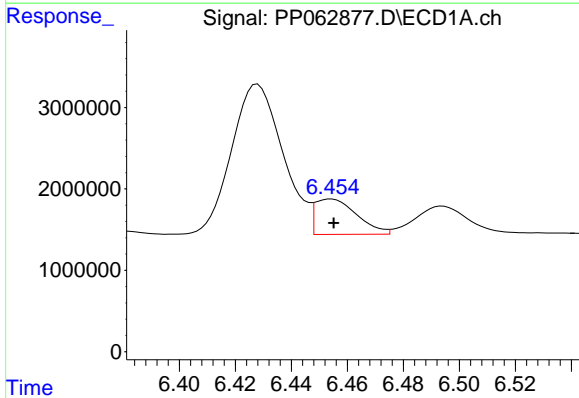
R.T.: 6.050 min
 Delta R.T.: 0.000 min
 Response: 31317125
 Conc: 368.96 ng/ml

Instrument :
 ECD_P
 ClientSampleId :
 PB158342BSD



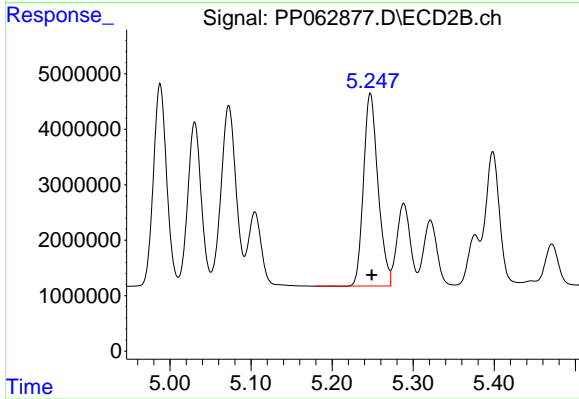
#23 AR-1248-3

R.T.: 5.073 min
 Delta R.T.: -0.001 min
 Response: 41361318
 Conc: 405.42 ng/ml



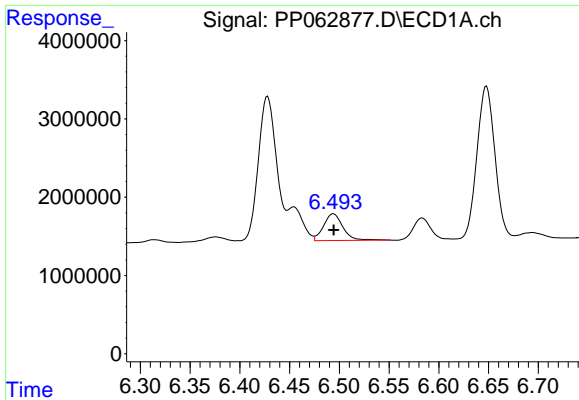
#24 AR-1248-4

R.T.: 6.454 min
 Delta R.T.: 0.000 min
 Response: 4499944
 Conc: 52.78 ng/ml



#24 AR-1248-4

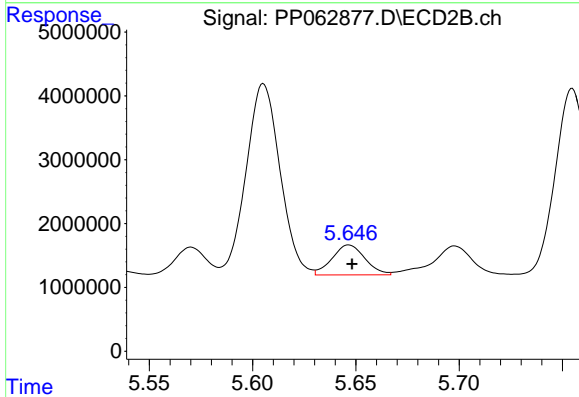
R.T.: 5.247 min
 Delta R.T.: -0.002 min
 Response: 43101005
 Conc: 360.47 ng/ml



#25 AR-1248-5

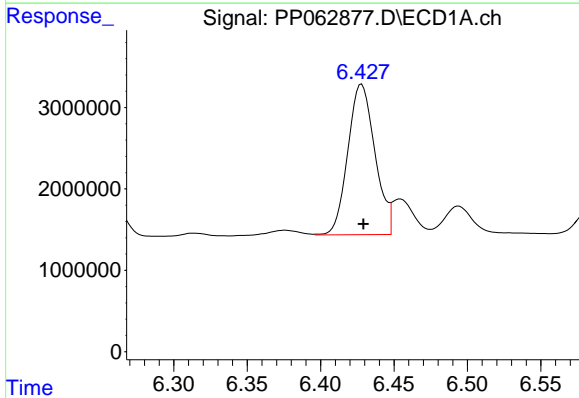
R.T.: 6.494 min
 Delta R.T.: 0.000 min
 Response: 4655885
 Conc: 55.44 ng/ml

Instrument :
 ECD_P
 ClientSampleId :
 PB158342BSD



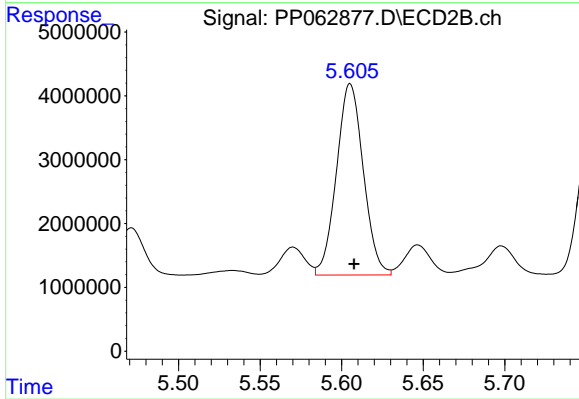
#25 AR-1248-5

R.T.: 5.647 min
 Delta R.T.: -0.002 min
 Response: 5211629
 Conc: 48.07 ng/ml



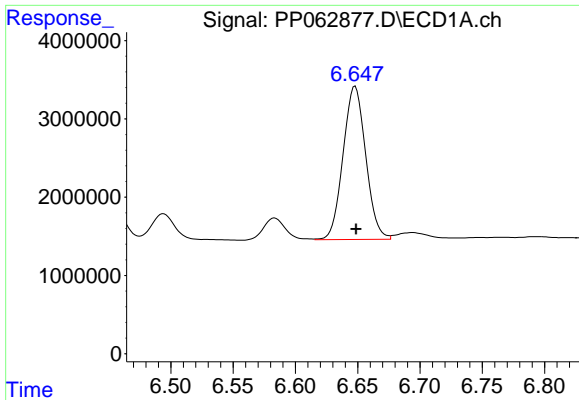
#26 AR-1254-1

R.T.: 6.428 min
 Delta R.T.: -0.001 min
 Response: 23660074
 Conc: 252.75 ng/ml



#26 AR-1254-1

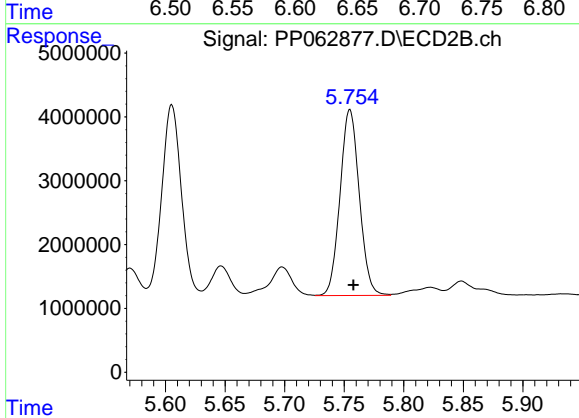
R.T.: 5.605 min
 Delta R.T.: -0.002 min
 Response: 34286250
 Conc: 196.30 ng/ml



#27 AR-1254-2

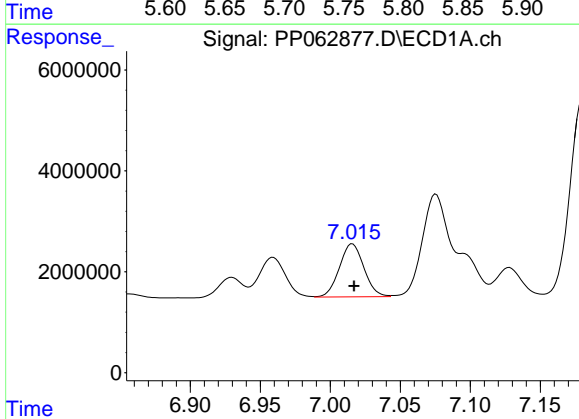
R.T.: 6.648 min
 Delta R.T.: 0.000 min
 Response: 24846224
 Conc: 178.14 ng/ml

Instrument :
 ECD_P
 ClientSampleId :
 PB158342BSD



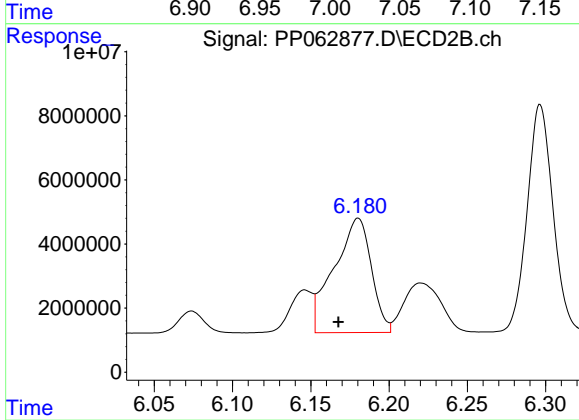
#27 AR-1254-2

R.T.: 5.755 min
 Delta R.T.: -0.003 min
 Response: 32782581
 Conc: 216.40 ng/ml



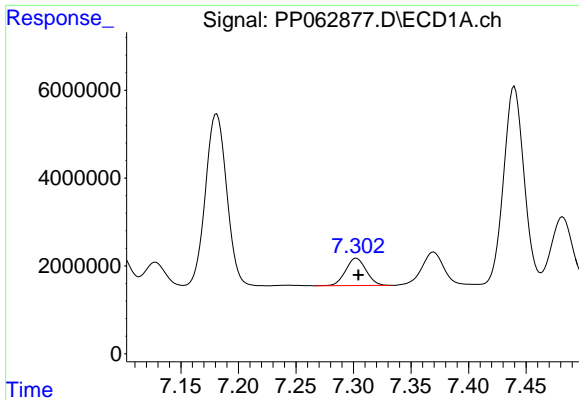
#28 AR-1254-3

R.T.: 7.016 min
 Delta R.T.: -0.001 min
 Response: 12847379
 Conc: 93.72 ng/ml



#28 AR-1254-3

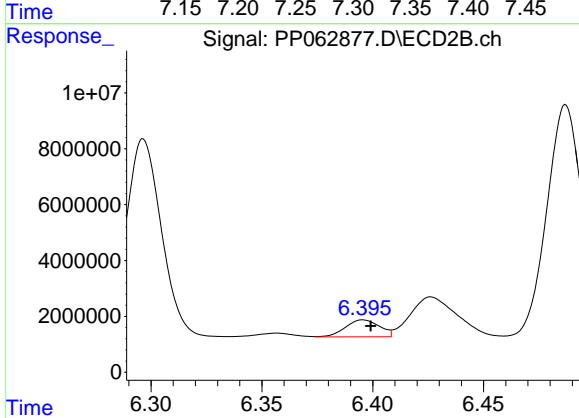
R.T.: 6.180 min
 Delta R.T.: 0.013 min
 Response: 59089912
 Conc: 246.55 ng/ml



#29 AR-1254-4

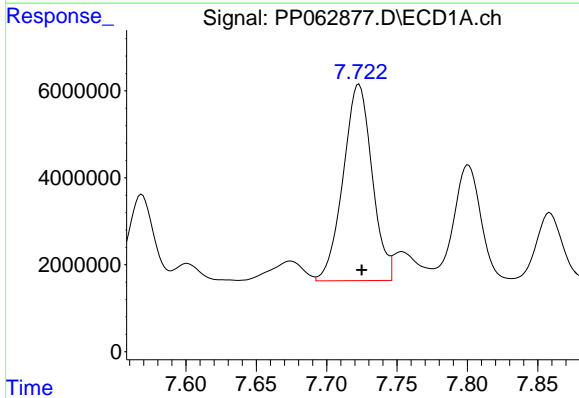
R.T.: 7.302 min
 Delta R.T.: -0.002 min
 Response: 7778503
 Conc: 86.77 ng/ml

Instrument :
 ECD_P
 ClientSampleId :
 PB158342BSD



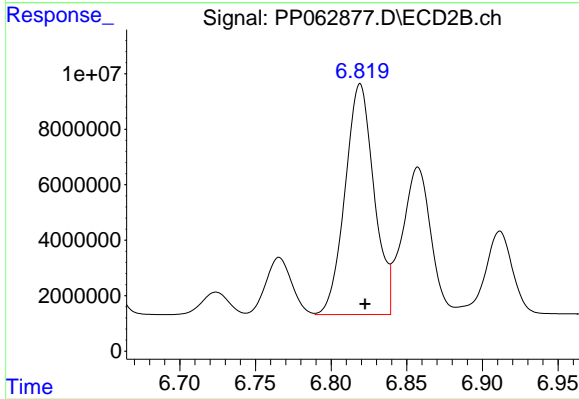
#29 AR-1254-4

R.T.: 6.396 min
 Delta R.T.: -0.003 min
 Response: 6445767
 Conc: 47.36 ng/ml



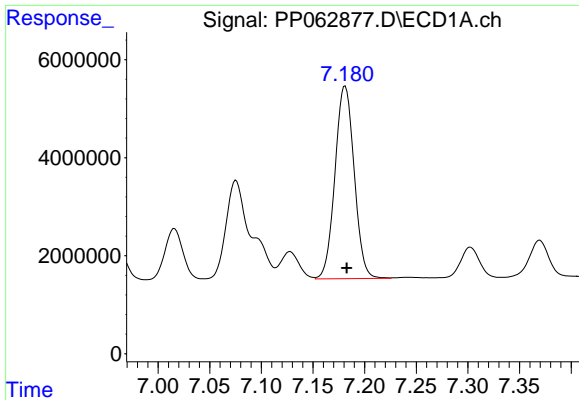
#30 AR-1254-5

R.T.: 7.723 min
 Delta R.T.: -0.002 min
 Response: 64619587
 Conc: 694.28 ng/ml



#30 AR-1254-5

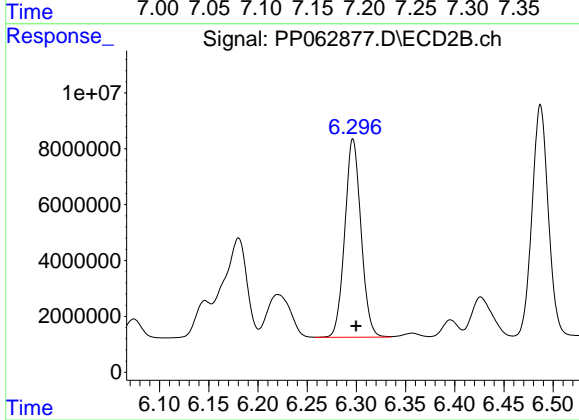
R.T.: 6.819 min
 Delta R.T.: -0.003 min
 Response: 110716849
 Conc: 546.08 ng/ml



#31 AR-1260-1

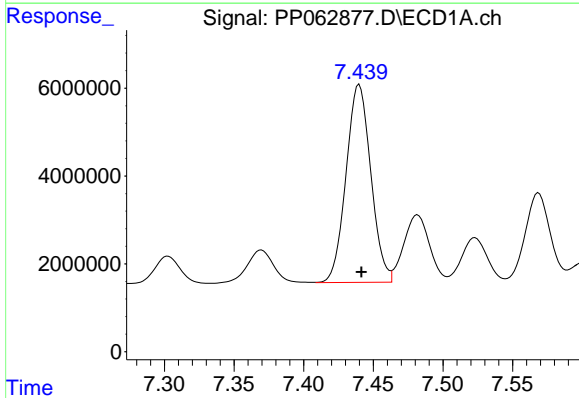
R.T.: 7.181 min
 Delta R.T.: -0.001 min
 Response: 50950425
 Conc: 493.21 ng/ml

Instrument :
 ECD_P
 ClientSampleId :
 PB158342BSD



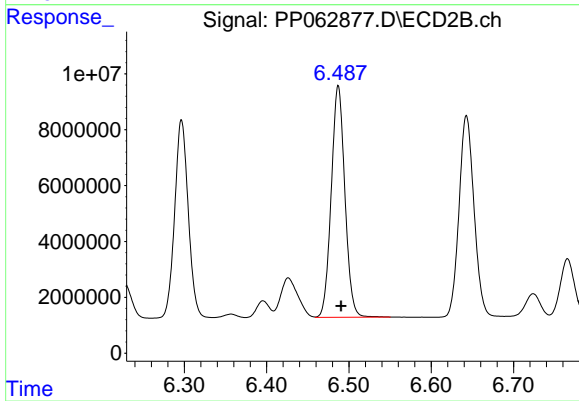
#31 AR-1260-1

R.T.: 6.297 min
 Delta R.T.: -0.003 min
 Response: 81497572
 Conc: 483.15 ng/ml



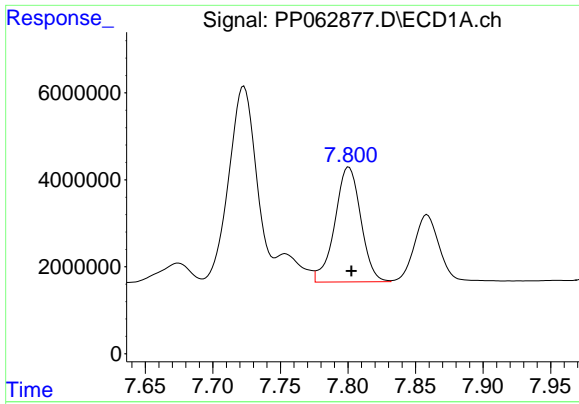
#32 AR-1260-2

R.T.: 7.440 min
 Delta R.T.: -0.002 min
 Response: 55755610
 Conc: 493.68 ng/ml



#32 AR-1260-2

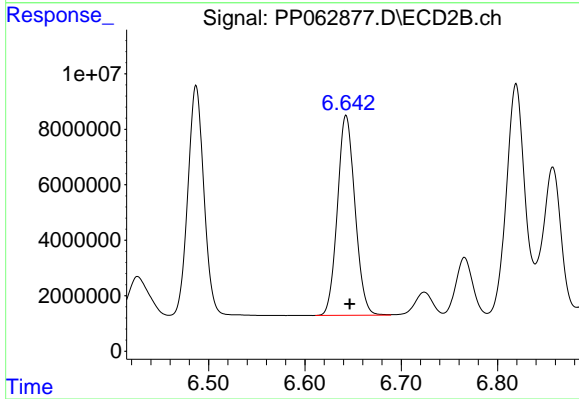
R.T.: 6.487 min
 Delta R.T.: -0.003 min
 Response: 95620334
 Conc: 491.88 ng/ml



#33 AR-1260-3

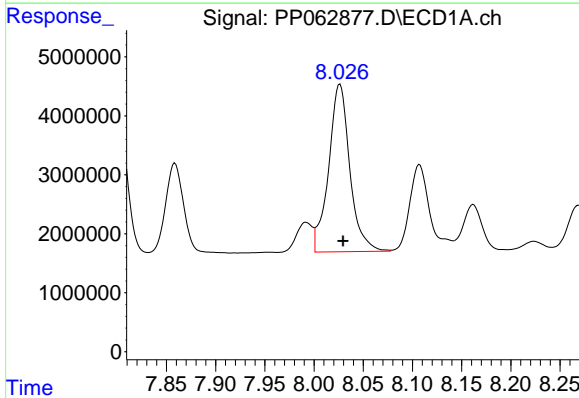
R.T.: 7.801 min
 Delta R.T.: -0.002 min
 Response: 35396061
 Conc: 416.28 ng/ml

Instrument :
 ECD_P
 ClientSampleId :
 PB158342BSD



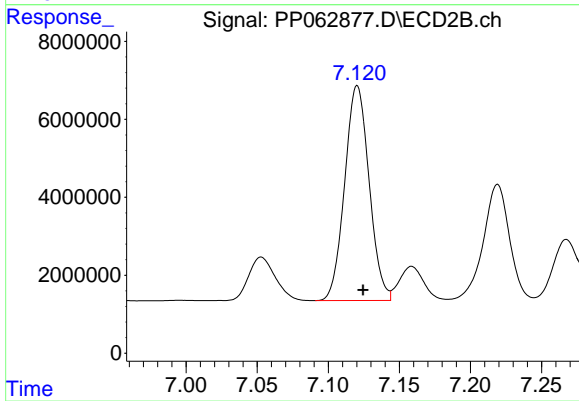
#33 AR-1260-3

R.T.: 6.643 min
 Delta R.T.: -0.004 min
 Response: 91169446
 Conc: 492.68 ng/ml



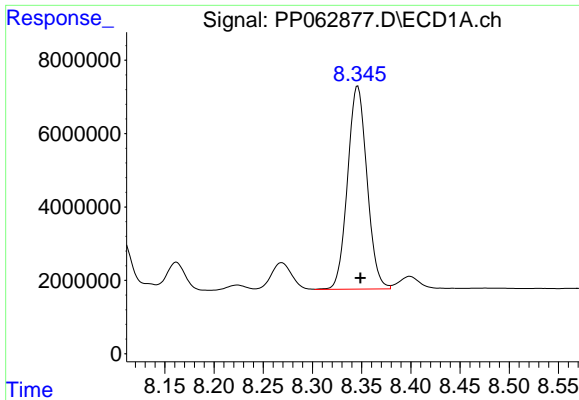
#34 AR-1260-4

R.T.: 8.026 min
 Delta R.T.: -0.003 min
 Response: 42598984
 Conc: 495.77 ng/ml



#34 AR-1260-4

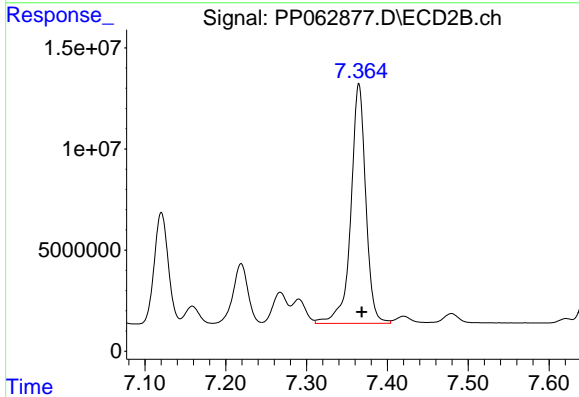
R.T.: 7.120 min
 Delta R.T.: -0.004 min
 Response: 65926929
 Conc: 444.11 ng/ml



#35 AR-1260-5

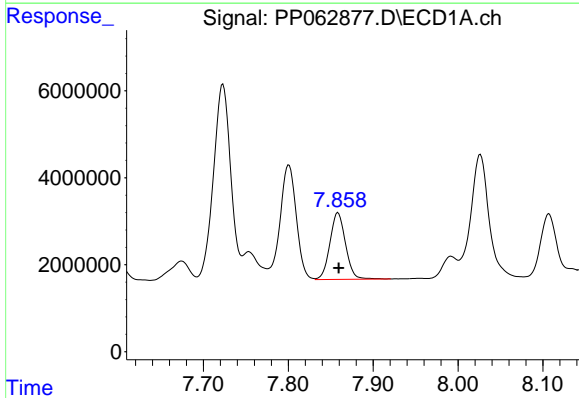
R.T.: 8.346 min
 Delta R.T.: -0.003 min
 Response: 76106101
 Conc: 479.06 ng/ml

Instrument :
 ECD_P
 ClientSampleId :
 PB158342BSD



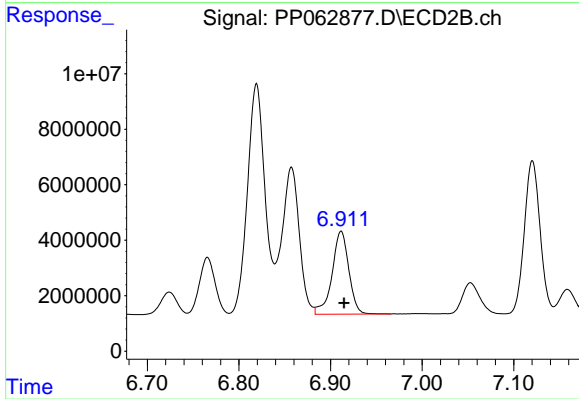
#35 AR-1260-5

R.T.: 7.365 min
 Delta R.T.: -0.004 min
 Response: 152292186
 Conc: 480.64 ng/ml



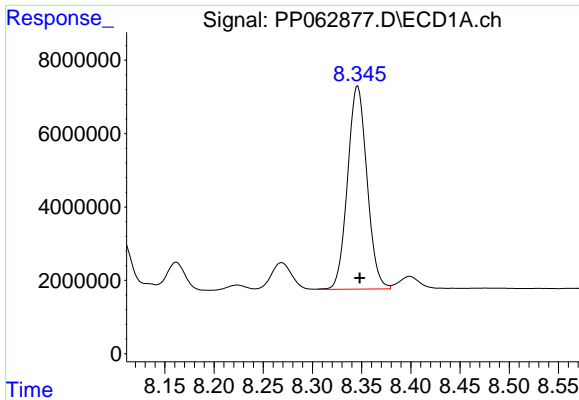
#36 AR-1262-1

R.T.: 7.859 min
 Delta R.T.: 0.000 min
 Response: 19743579
 Conc: 377.52 ng/ml



#36 AR-1262-1

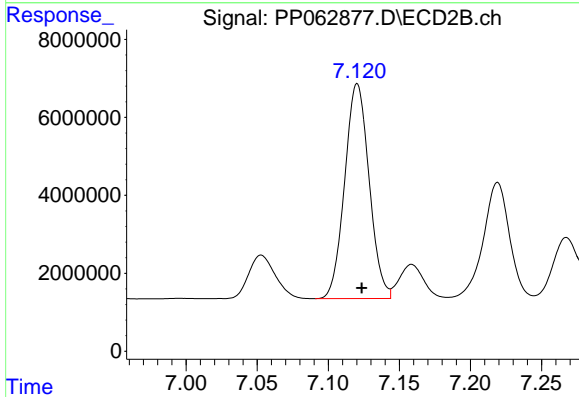
R.T.: 6.912 min
 Delta R.T.: -0.003 min
 Response: 38025109
 Conc: 390.76 ng/ml



#37 AR-1262-2

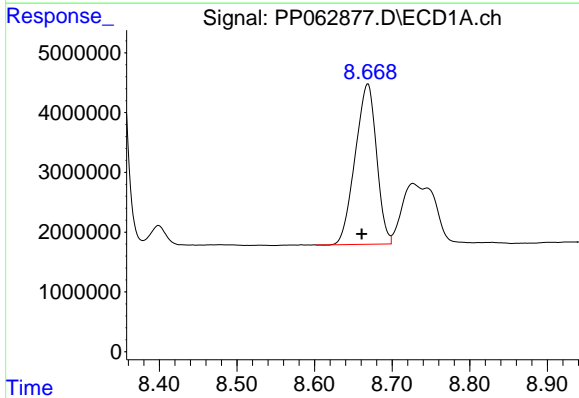
R.T.: 8.346 min
 Delta R.T.: -0.002 min
 Response: 76106101
 Conc: 384.60 ng/ml

Instrument :
 ECD_P
 ClientSampleId :
 PB158342BSD



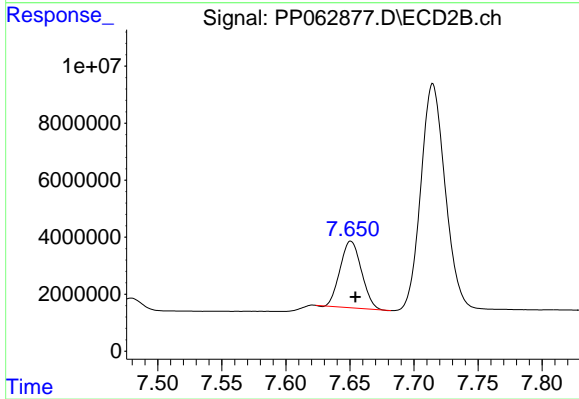
#37 AR-1262-2

R.T.: 7.120 min
 Delta R.T.: -0.003 min
 Response: 65926929
 Conc: 327.93 ng/ml



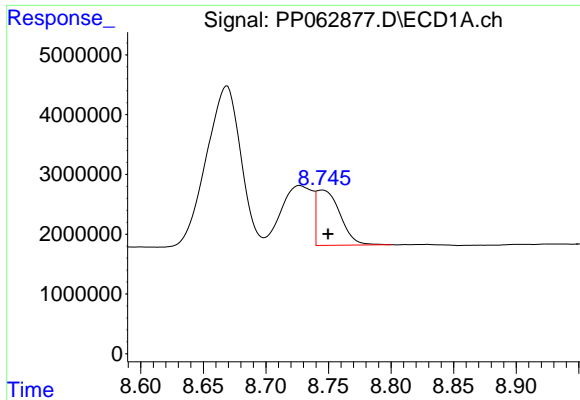
#38 AR-1262-3

R.T.: 8.669 min
 Delta R.T.: 0.008 min
 Response: 51140196
 Conc: 365.33 ng/ml



#38 AR-1262-3

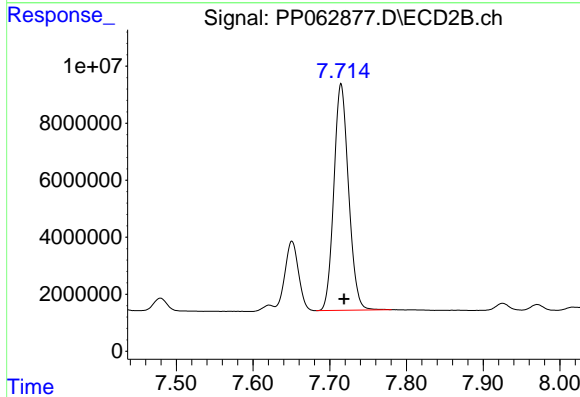
R.T.: 7.651 min
 Delta R.T.: -0.003 min
 Response: 27149845
 Conc: 200.56 ng/ml



#39 AR-1262-4

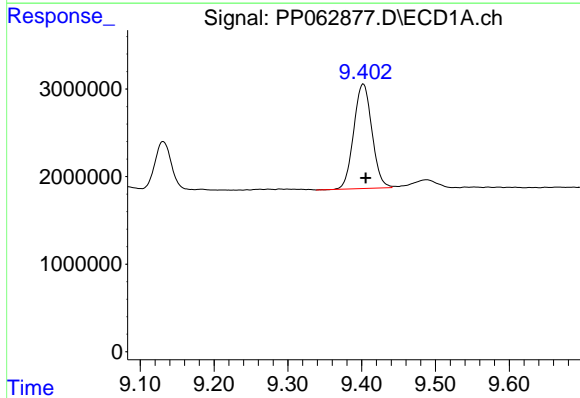
R.T.: 8.745 min
 Delta R.T.: -0.005 min
 Response: 12158061
 Conc: 113.89 ng/ml

Instrument :
 ECD_P
 ClientSampleId :
 PB158342BSD



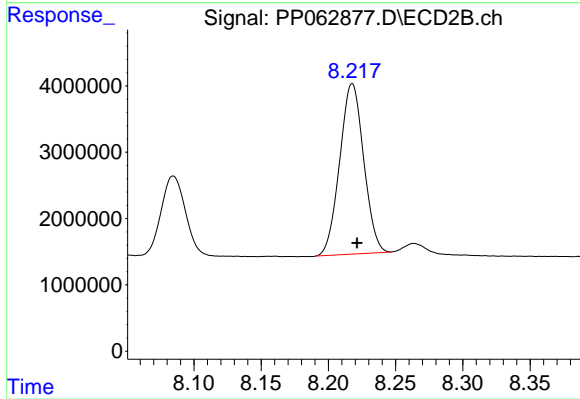
#39 AR-1262-4

R.T.: 7.715 min
 Delta R.T.: -0.004 min
 Response: 105735051
 Conc: 397.02 ng/ml



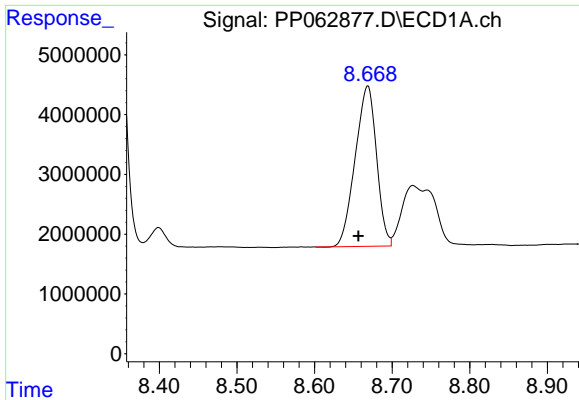
#40 AR-1262-5

R.T.: 9.402 min
 Delta R.T.: -0.003 min
 Response: 20450900
 Conc: 275.99 ng/ml



#40 AR-1262-5

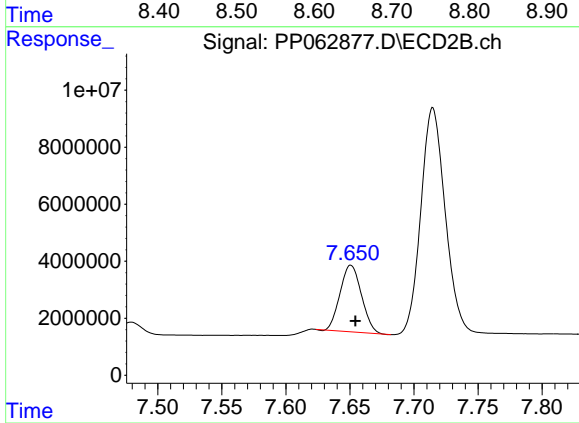
R.T.: 8.218 min
 Delta R.T.: -0.004 min
 Response: 31818526
 Conc: 274.98 ng/ml



#41 AR-1268-1

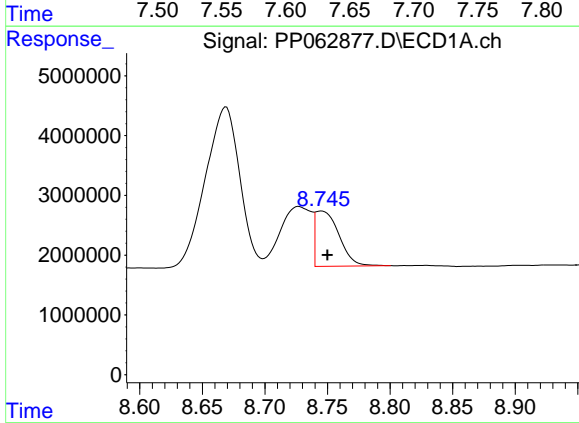
R.T.: 8.669 min
 Delta R.T.: 0.012 min
 Response: 51140196
 Conc: 231.60 ng/ml

Instrument :
 ECD_P
 ClientSampleId :
 PB158342BSD



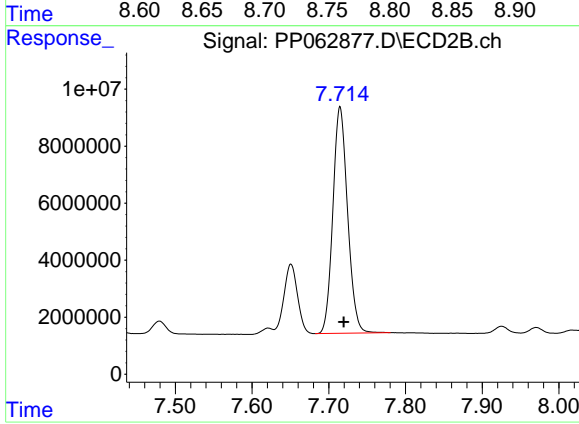
#41 AR-1268-1

R.T.: 7.651 min
 Delta R.T.: -0.004 min
 Response: 27149845
 Conc: 70.60 ng/ml



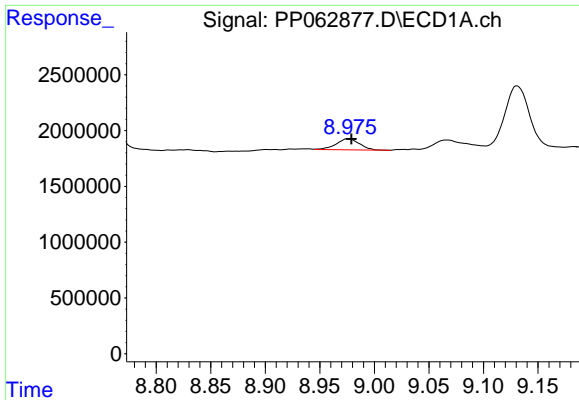
#42 AR-1268-2

R.T.: 8.745 min
 Delta R.T.: -0.005 min
 Response: 12158061
 Conc: 60.86 ng/ml



#42 AR-1268-2

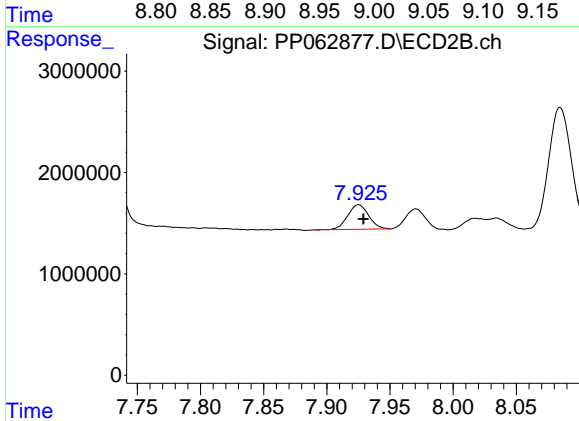
R.T.: 7.715 min
 Delta R.T.: -0.005 min
 Response: 105735051
 Conc: 300.97 ng/ml



#43 AR-1268-3

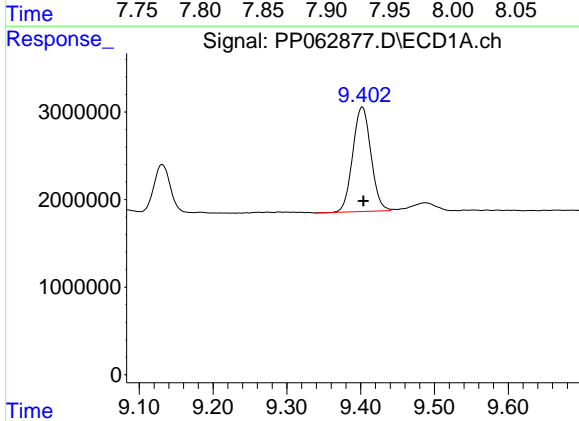
R.T.: 8.976 min
 Delta R.T.: -0.002 min
 Response: 1467709
 Conc: 8.29 ng/ml

Instrument :
 ECD_P
 ClientSampleId :
 PB158342BSD



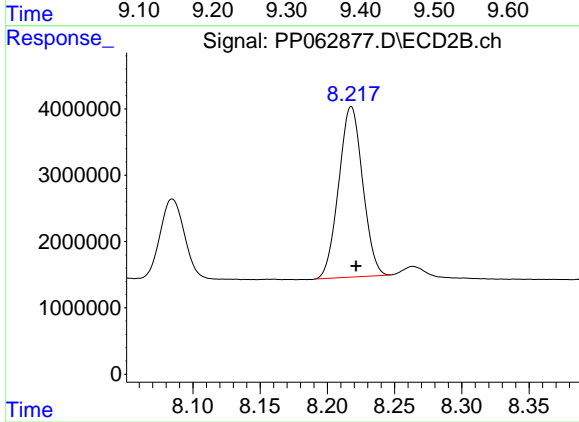
#43 AR-1268-3

R.T.: 7.925 min
 Delta R.T.: -0.004 min
 Response: 2794129
 Conc: 9.03 ng/ml



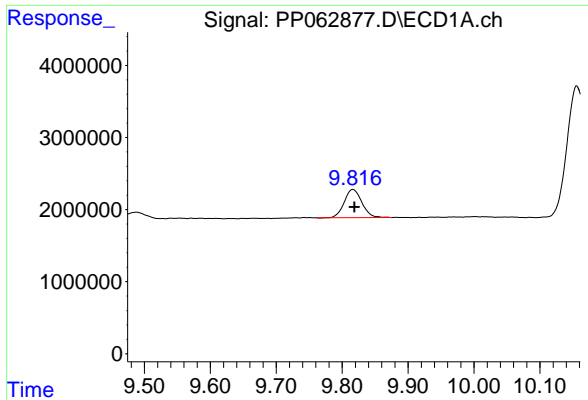
#44 AR-1268-4

R.T.: 9.402 min
 Delta R.T.: -0.001 min
 Response: 20450900
 Conc: 278.24 ng/ml



#44 AR-1268-4

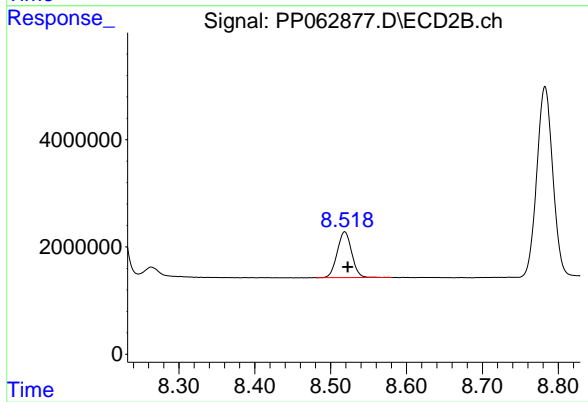
R.T.: 8.218 min
 Delta R.T.: -0.004 min
 Response: 31818526
 Conc: 263.27 ng/ml



#45 AR-1268-5

R.T.: 9.816 min
Delta R.T.: -0.002 min
Response: 7279603
Conc: 13.47 ng/ml

Instrument :
ECD_P
ClientSampleId :
PB158342BSD



#45 AR-1268-5

R.T.: 8.519 min
Delta R.T.: -0.004 min
Response: 11319291
Conc: 13.65 ng/ml