

Data Path : Z:\pestpcbsrv\HPCHEM1\ECD_P\Data\PP011224\
 Data File : PP062917.D
 Signal(s) : Signal #1: ECD1A.ch Signal #2: ECD2B.ch
 Acq On : 13 Jan 2024 00:46
 Operator : YP\AJ
 Sample : AR1254CCC500
 Misc :
 ALS Vial : 6 Sample Multiplier: 1

Instrument :
 ECD_P
 ClientSampleId :
 AR1254CCC500

Integration File signal 1: autoint1.e
 Integration File signal 2: autoint2.e
 Quant Time: Jan 13 06:02:04 2024
 Quant Method : Z:\pestpcbsrv\HPCHEM1\ECD_P\methods\PP011024.M
 Quant Title : GC EXTRACTABLES
 QLast Update : Thu Jan 11 02:58:31 2024
 Response via : Initial Calibration
 Integrator: ChemStation

Volume Inj. : 2 µl
 Signal #1 Phase : ZB-MR2 Signal #2 Phase: ZB-MR2
 Signal #1 Info : 30Mx0.32mmx 0.50µ Signal #2 Info : 30M x 0.32mm x 0.25µm

Compound	RT#1	RT#2	Resp#1	Resp#2	ng/ml	ng/ml

System Monitoring Compounds						
1) SA Tetrachlo...	4.395	3.681	119.7E6	162.3E6	46.151	46.521
2) SA Decachlor...	10.159	8.786	81398351	116.7E6	51.471	50.022
Target Compounds						
26) L6 AR-1254-1	6.428	5.606	39700058	82994794	424.102	475.162
27) L6 AR-1254-2	6.648	5.756	62636645	71617520	449.097	472.750
28) L6 AR-1254-3	7.016	6.166	63139110	113.1E6	460.610	471.708
29) L6 AR-1254-4	7.304	6.398	43059573	65960590	480.324	484.621
30) L6 AR-1254-5	7.725	6.821	43705217	97295205	469.571	479.881

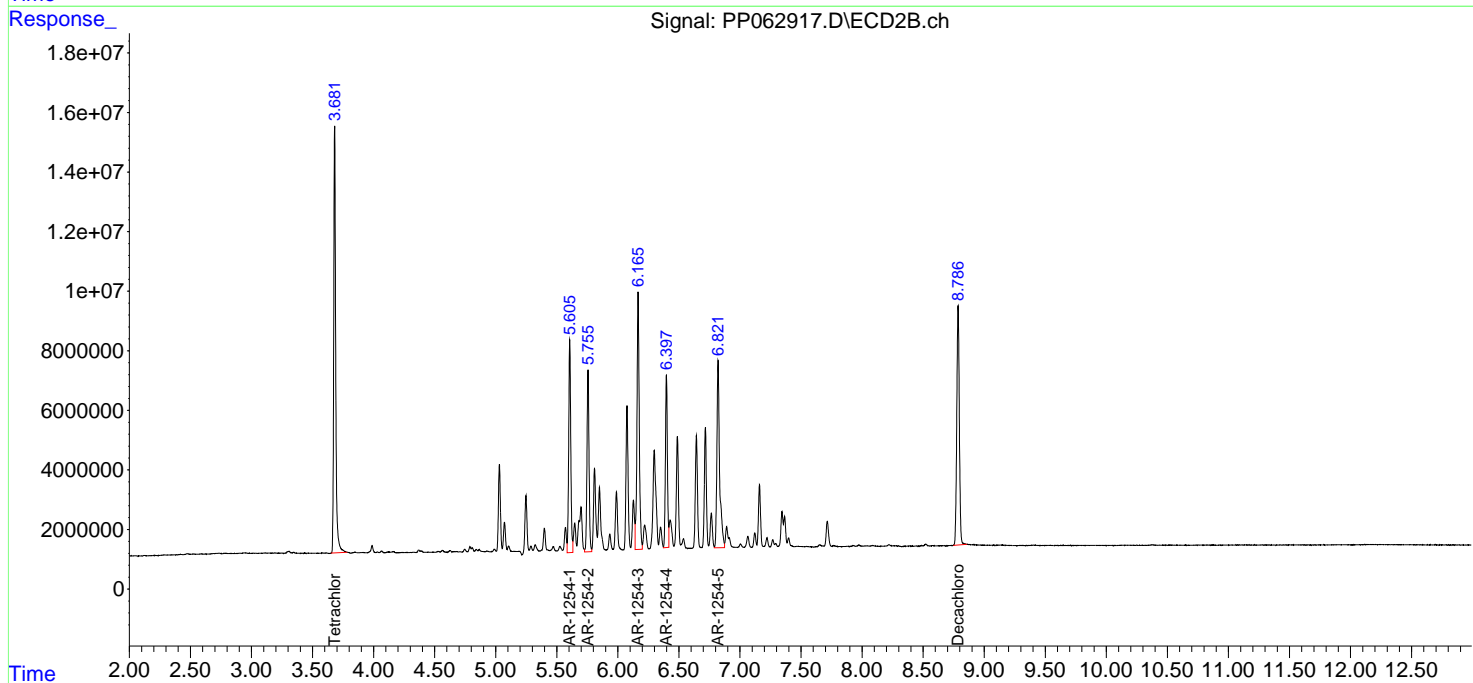
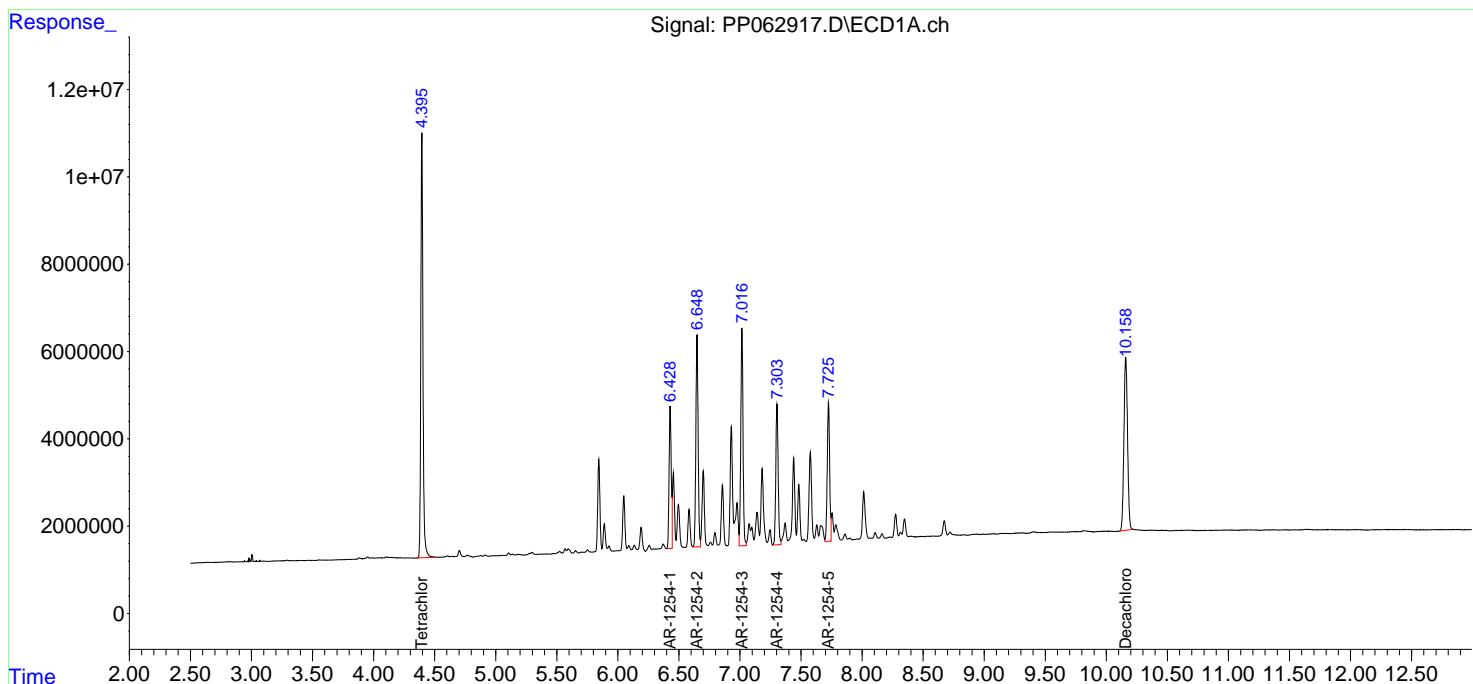
(f)=RT Delta > 1/2 Window (#)=Amounts differ by > 25% (m)=manual int.

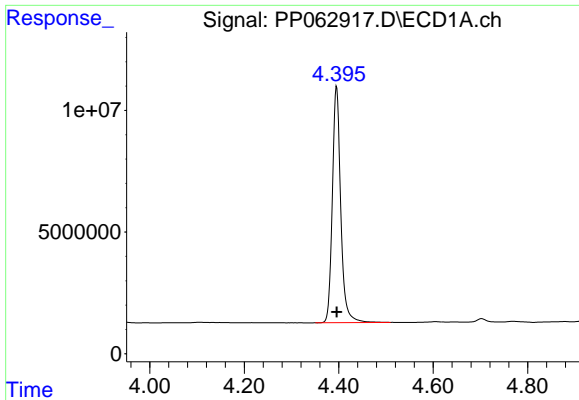
Data Path : Z:\pestpcbsrv\HPCHEM1\ECD_P\Data\PP011224\
 Data File : PP062917.D
 Signal(s) : Signal #1: ECD1A.ch Signal #2: ECD2B.ch
 Acq On : 13 Jan 2024 00:46
 Operator : YP\AJ
 Sample : AR1254CCC500
 Misc :
 ALS Vial : 6 Sample Multiplier: 1

Instrument :
 ECD_P
 ClientSampleId :
 AR1254CCC500

Integration File signal 1: autoint1.e
 Integration File signal 2: autoint2.e
 Quant Time: Jan 13 06:02:04 2024
 Quant Method : Z:\pestpcbsrv\HPCHEM1\ECD_P\methods\PP011024.M
 Quant Title : GC EXTRACTABLES
 QLast Update : Thu Jan 11 02:58:31 2024
 Response via : Initial Calibration
 Integrator: ChemStation

Volume Inj. : 2 µl
 Signal #1 Phase : ZB-MR1 Signal #2 Phase: ZB-MR2
 Signal #1 Info : 30Mx0.32mmx 0.50µ Signal #2 Info : 30M x 0.32mm x 0.25µm

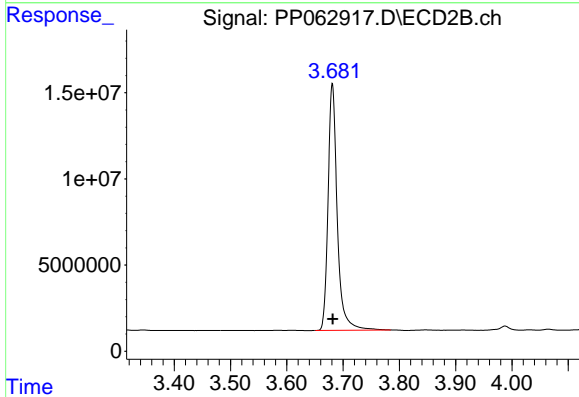




#1 Tetrachloro-m-xylene

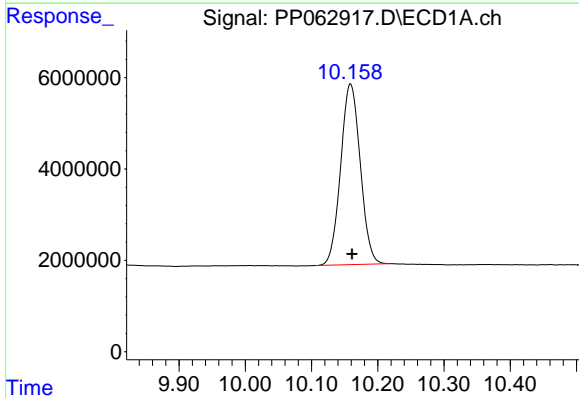
R.T.: 4.395 min
Delta R.T.: 0.000 min
Response: 119683052
Conc: 46.15 ng/ml

Instrument :
ECD_P
ClientSampleId :
AR1254CCC500



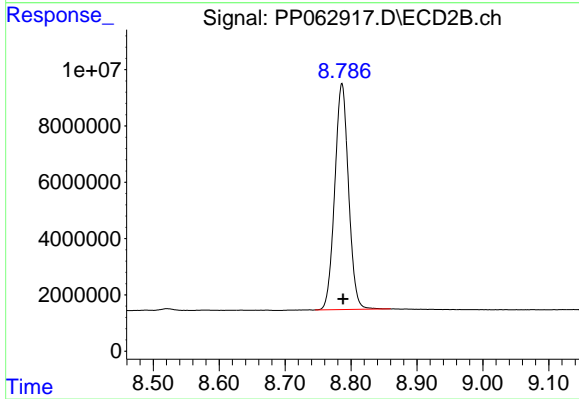
#1 Tetrachloro-m-xylene

R.T.: 3.681 min
Delta R.T.: 0.000 min
Response: 162320144
Conc: 46.52 ng/ml



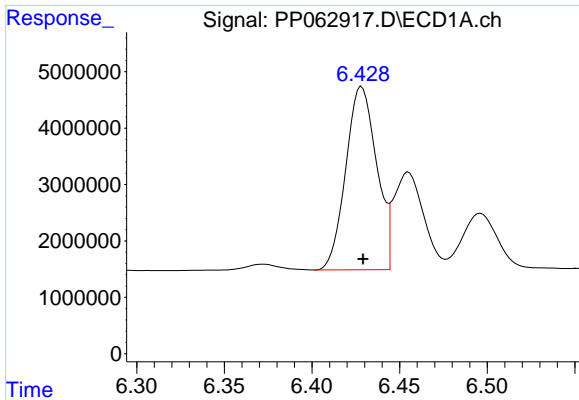
#2 Decachlorobiphenyl

R.T.: 10.159 min
Delta R.T.: -0.003 min
Response: 81398351
Conc: 51.47 ng/ml



#2 Decachlorobiphenyl

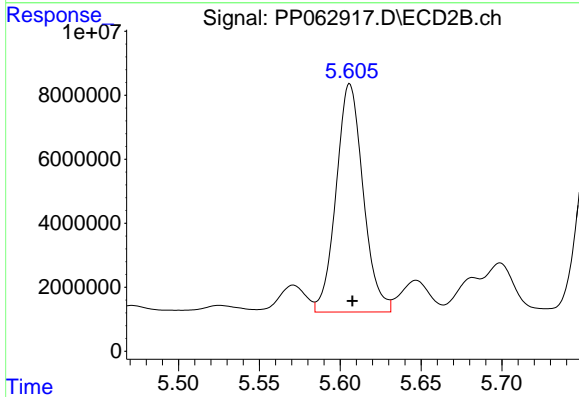
R.T.: 8.786 min
Delta R.T.: -0.001 min
Response: 116720439
Conc: 50.02 ng/ml



#26 AR-1254-1

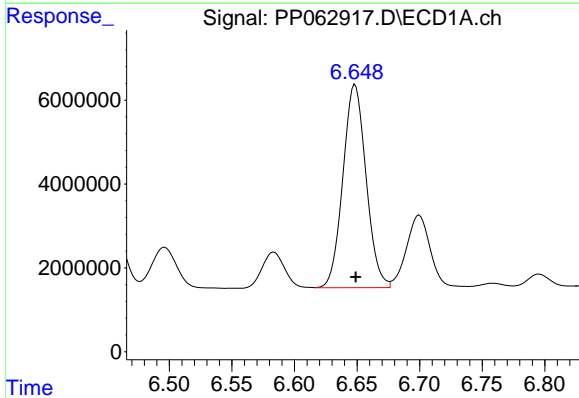
R.T.: 6.428 min
 Delta R.T.: 0.000 min
 Response: 39700058
 Conc: 424.10 ng/ml

Instrument :
 ECD_P
 ClientSampleId :
 AR1254CCC500



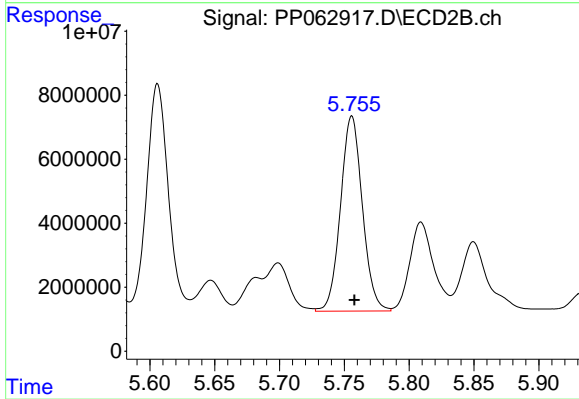
#26 AR-1254-1

R.T.: 5.606 min
 Delta R.T.: -0.002 min
 Response: 82994794
 Conc: 475.16 ng/ml



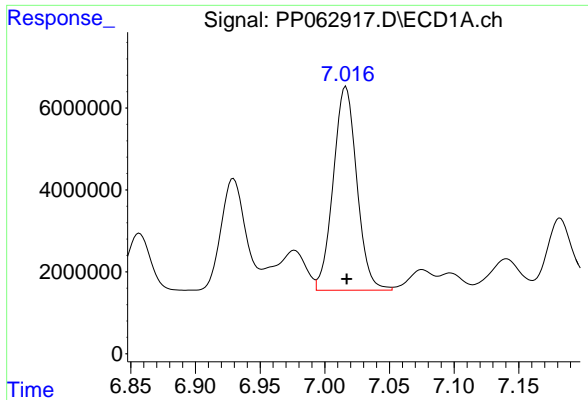
#27 AR-1254-2

R.T.: 6.648 min
 Delta R.T.: 0.000 min
 Response: 62636645
 Conc: 449.10 ng/ml



#27 AR-1254-2

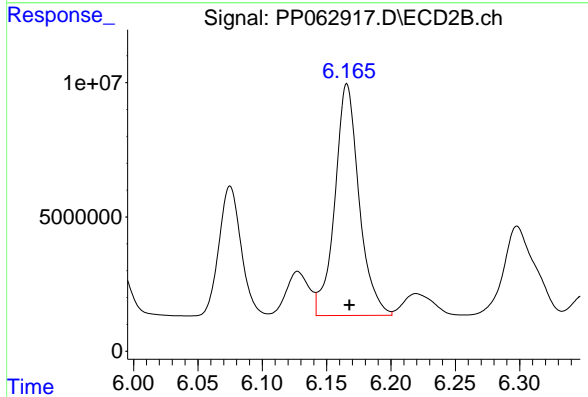
R.T.: 5.756 min
 Delta R.T.: -0.002 min
 Response: 71617520
 Conc: 472.75 ng/ml



#28 AR-1254-3

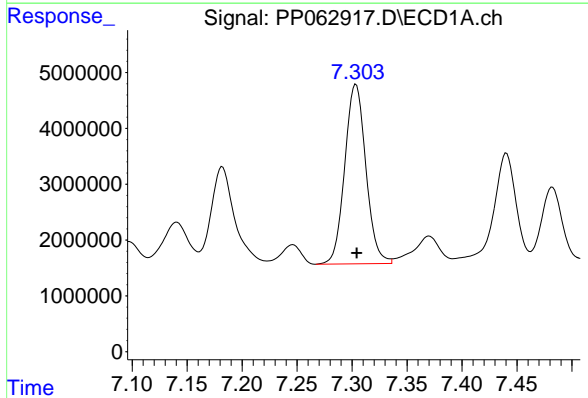
R.T.: 7.016 min
Delta R.T.: 0.000 min
Response: 63139110
Conc: 460.61 ng/ml

Instrument :
ECD_P
ClientSampleId :
AR1254CCC500



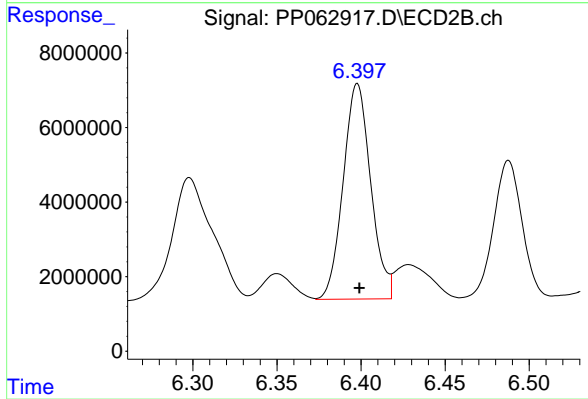
#28 AR-1254-3

R.T.: 6.166 min
Delta R.T.: -0.002 min
Response: 113053141
Conc: 471.71 ng/ml



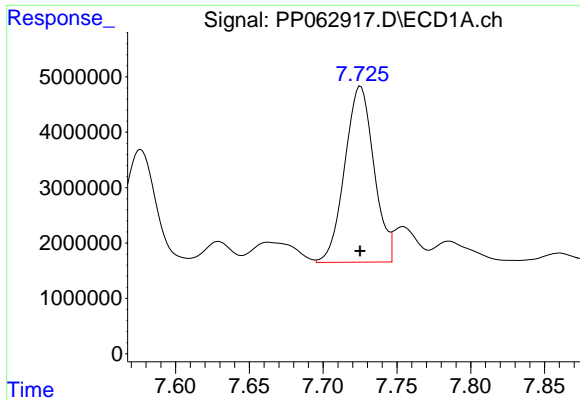
#29 AR-1254-4

R.T.: 7.304 min
Delta R.T.: 0.000 min
Response: 43059573
Conc: 480.32 ng/ml



#29 AR-1254-4

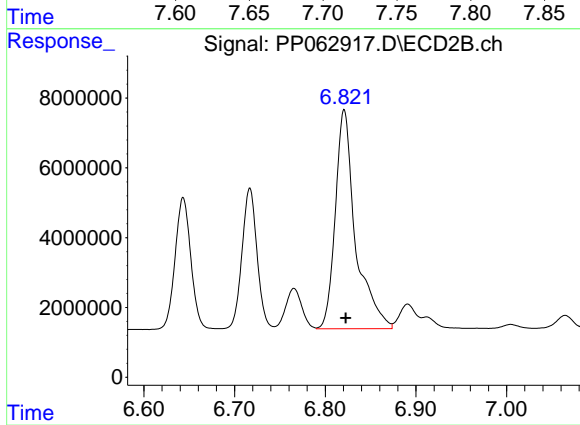
R.T.: 6.398 min
Delta R.T.: -0.001 min
Response: 65960590
Conc: 484.62 ng/ml



#30 AR-1254-5

R.T.: 7.725 min
 Delta R.T.: 0.000 min
 Response: 43705217
 Conc: 469.57 ng/ml

Instrument :
 ECD_P
 ClientSampleId :
 AR1254CCC500



#30 AR-1254-5

R.T.: 6.821 min
 Delta R.T.: -0.002 min
 Response: 97295205
 Conc: 479.88 ng/ml