

Data Path : Z:\pestpcbsrv\HPCHEM1\ECD_P\Data\PP011321\
 Data File : PP032666.D
 Signal(s) : Signal #1: ECD1A.CH Signal #2: ECD2B.CH
 Acq On : 12 Jan 2021 23:22
 Operator : DD\AJ
 Sample : I.BLK
 Misc :
 ALS Vial : 2 Sample Multiplier: 1

Instrument :
 ECD_P
 ClientSampleId :
 I.BLK

Integration File signal 1: autoint1.e
 Integration File signal 2: autoint2.e
 Quant Time: Jan 13 02:32:33 2021
 Quant Method : Z:\pestpcbsrv\HPCHEM1\ECD_P\methods\PP010421.M
 Quant Title : GC EXTRACTABLES
 QLast Update : Tue Jan 05 07:49:02 2021
 Response via : Initial Calibration
 Integrator: ChemStation 6890 Scale Mode: Small noise peaks clipped

Volume Inj. : 2 µl
 Signal #1 Phase : ZB-MR1 Signal #2 Phase: ZB-MR2
 Signal #1 Info : 30Mx0.32mmx 0.50µ Signal #2 Info : 30M x 0.32mm x 0.25µm

Compound	RT#1	RT#2	Resp#1	Resp#2	ng/ml	ng/ml

System Monitoring Compounds						
1) SA Tetrachlo...	4.743	4.019f	1263062	988432	23.096	20.421
2) SA Decachlor...	10.574	9.299f	910490	853451	20.338	19.221
Target Compounds						
8) L2 AR-1221-1	4.986	0.000	74010	0	63.969	N.D. #
35) L7 AR-1260-5	8.880f	0.000	129731	0	26.877	N.D. #
37) L8 AR-1262-2	8.880f	0.000	129731	0	22.473	N.D. #

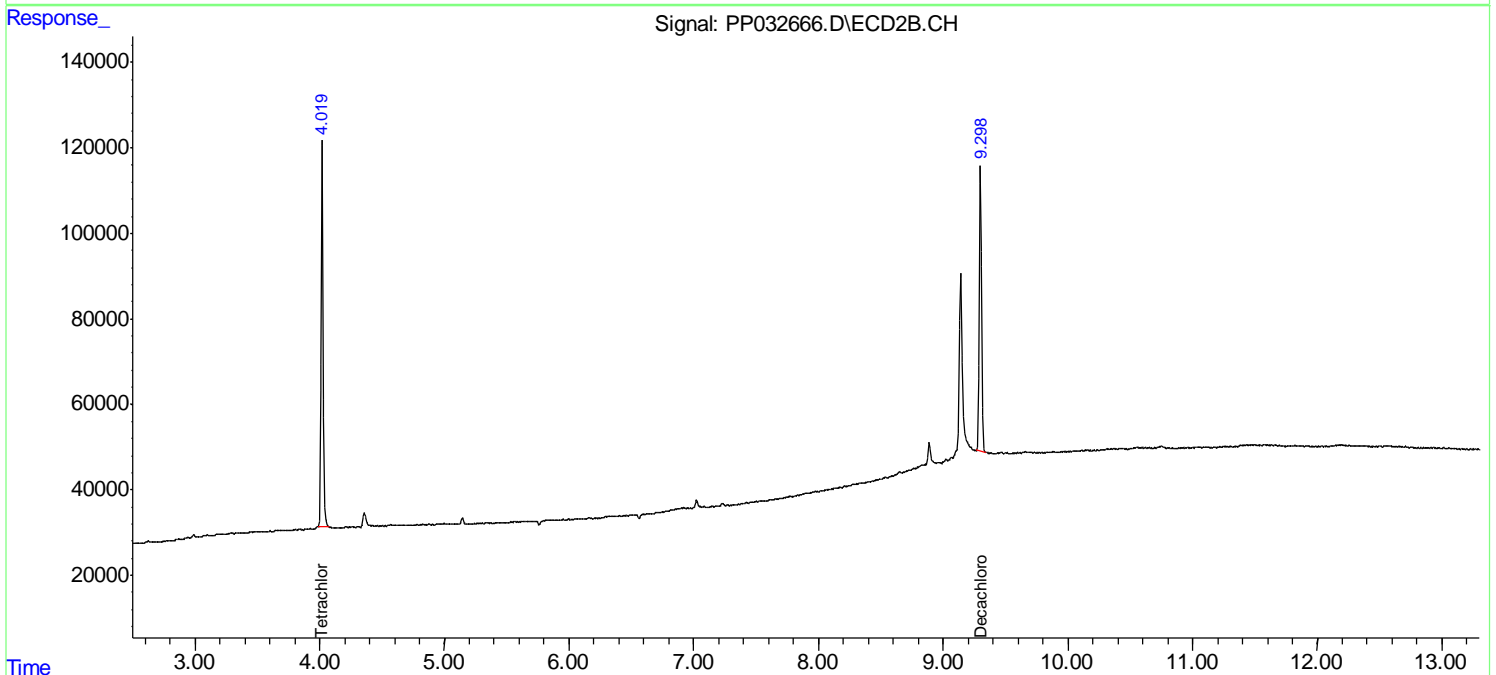
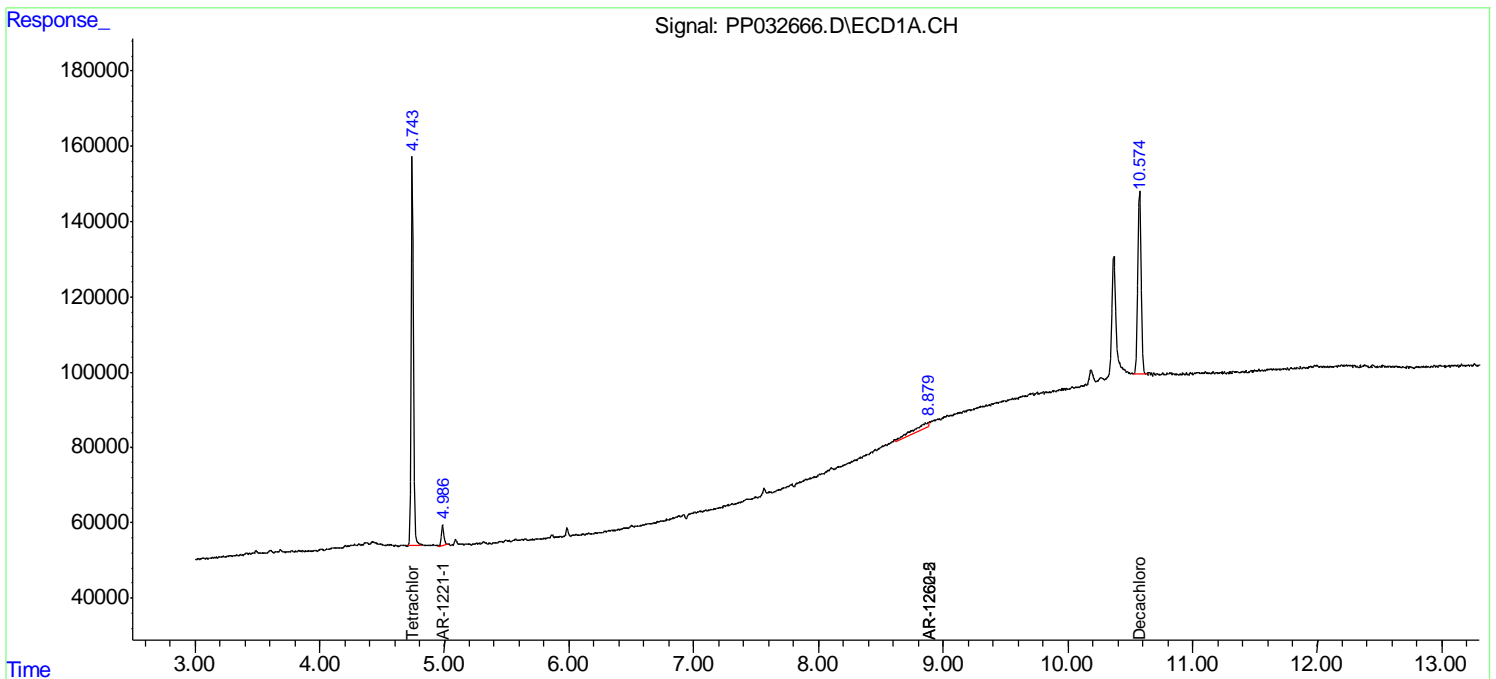
(f)=RT Delta > 1/2 Window (#)=Amounts differ by > 25% (m)=manual int.

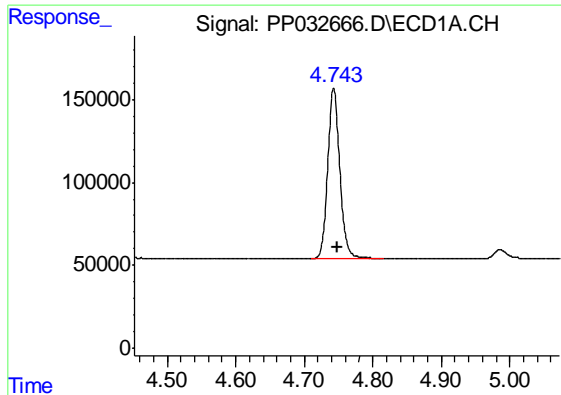
Data Path : Z:\pestpcbsrv\HPCHEM1\ECD_P\Data\PP011321\
 Data File : PP032666.D
 Signal(s) : Signal #1: ECD1A.CH Signal #2: ECD2B.CH
 Acq On : 12 Jan 2021 23:22
 Operator : DD\AJ
 Sample : I.BLK
 Misc :
 ALS Vial : 2 Sample Multiplier: 1

Instrument :
 ECD_P
 ClientSampleId :
 I.BLK

Integration File signal 1: autoint1.e
 Integration File signal 2: autoint2.e
 Quant Time: Jan 13 02:32:33 2021
 Quant Method : Z:\pestpcbsrv\HPCHEM1\ECD_P\methods\PP010421.M
 Quant Title : GC EXTRACTABLES
 QLast Update : Tue Jan 05 07:49:02 2021
 Response via : Initial Calibration
 Integrator: ChemStation 6890 Scale Mode: Small noise peaks clipped

Volume Inj. : 2 µl
 Signal #1 Phase : ZB-MR1 Signal #2 Phase: ZB-MR2
 Signal #1 Info : 30Mx0.32mmx 0.50µ Signal #2 Info : 30M x 0.32mm x 0.25µm

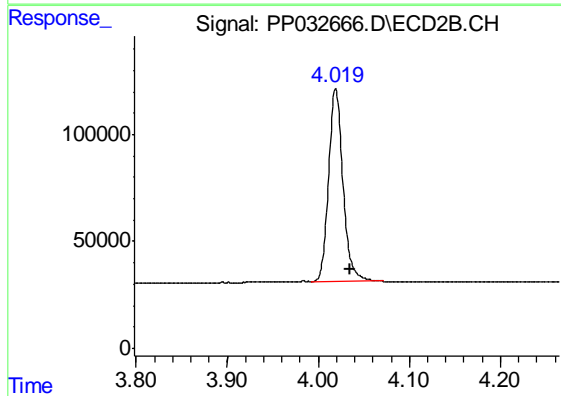




#1 Tetrachloro-m-xylene

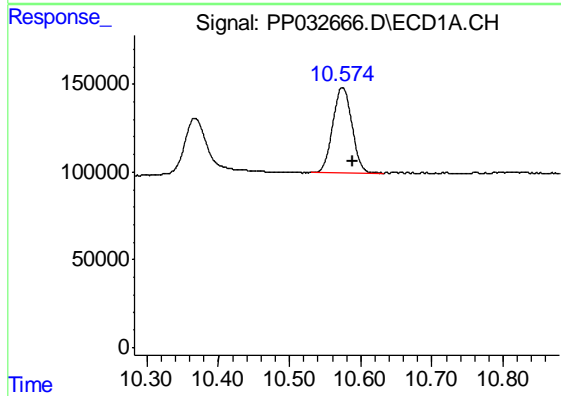
R.T.: 4.743 min
 Delta R.T.: -0.006 min
 Response: 1263062
 Conc: 23.10 ng/ml

Instrument :
 ECD_P
 ClientSampleId :
 I.BLK



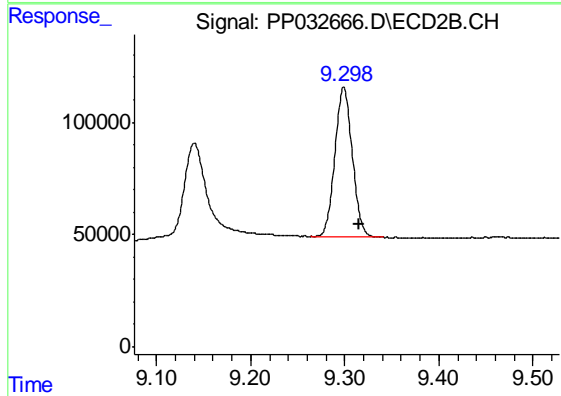
#1 Tetrachloro-m-xylene

R.T.: 4.019 min
 Delta R.T.: -0.016 min
 Response: 988432
 Conc: 20.42 ng/ml



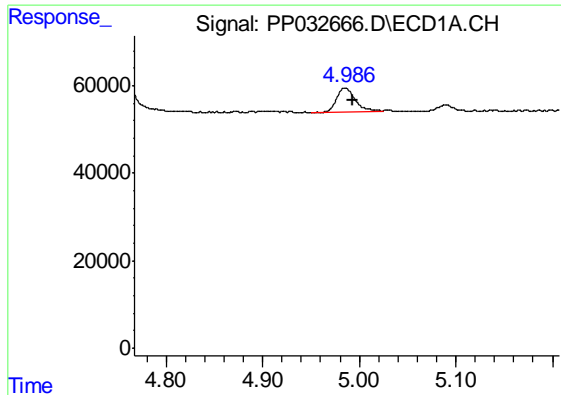
#2 Decachlorobiphenyl

R.T.: 10.574 min
 Delta R.T.: -0.014 min
 Response: 910490
 Conc: 20.34 ng/ml



#2 Decachlorobiphenyl

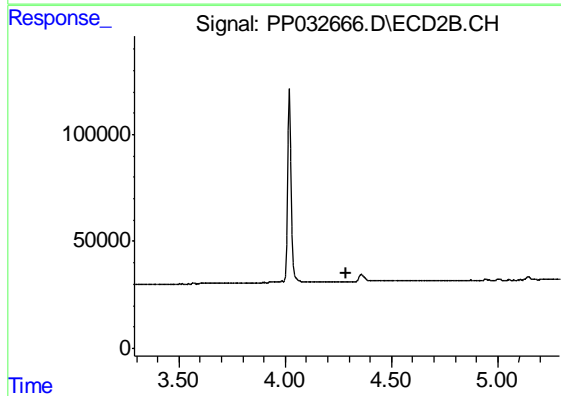
R.T.: 9.299 min
 Delta R.T.: -0.016 min
 Response: 853451
 Conc: 19.22 ng/ml



#8 AR-1221-1

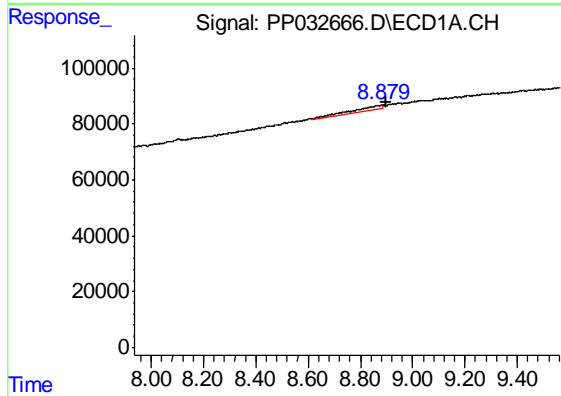
R.T.: 4.986 min
 Delta R.T.: -0.008 min
 Response: 74010
 Conc: 63.97 ng/ml

Instrument :
 ECD_P
 ClientSampleId :
 I.BLK



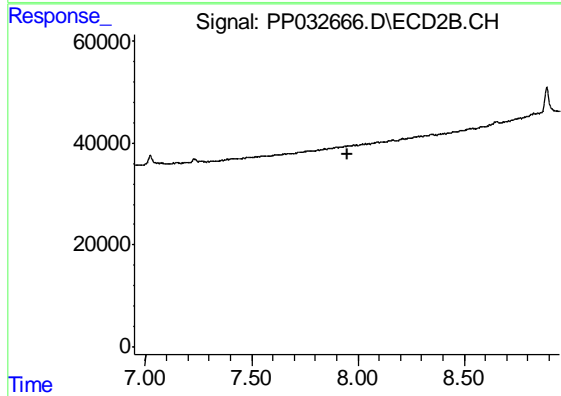
#8 AR-1221-1

R.T.: 0.000 min
 Exp R.T. : 4.290 min
 Response: 0
 Conc: N.D.



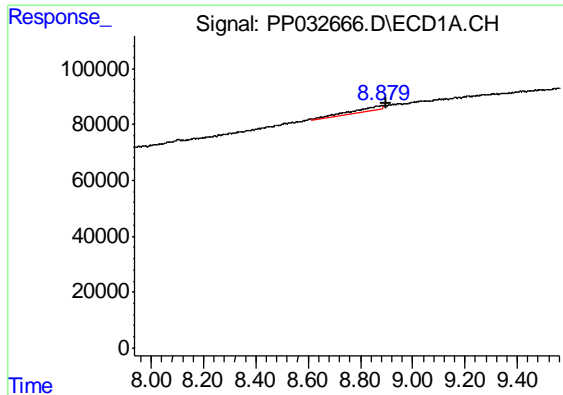
#35 AR-1260-5

R.T.: 8.880 min
 Delta R.T.: -0.019 min
 Response: 129731
 Conc: 26.88 ng/ml



#35 AR-1260-5

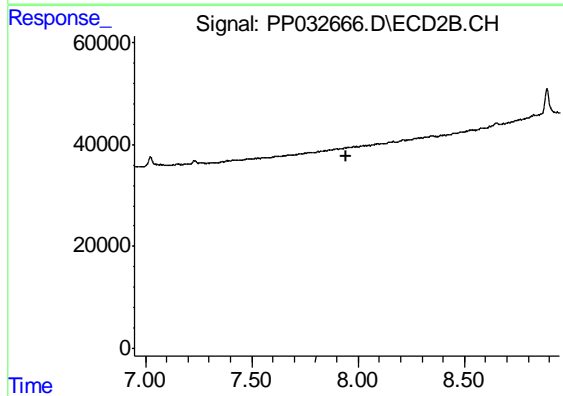
R.T.: 0.000 min
 Exp R.T. : 7.949 min
 Response: 0
 Conc: N.D.



#37 AR-1262-2

R.T.: 8.880 min
Delta R.T.: -0.018 min
Response: 129731
Conc: 22.47 ng/ml

Instrument :
ECD_P
ClientSampleId :
I.BLK



#37 AR-1262-2

R.T.: 0.000 min
Exp R.T. : 7.947 min
Response: 0
Conc: N.D.