

Data Path : Z:\pestpcbsrv\HPCHEM1\ECD_P\Data\PP011322\
 Data File : PP042890.D
 Signal(s) : Signal #1: ECD1A.CH Signal #2: ECD2B.CH
 Acq On : 14 Jan 2022 00:48
 Operator : AJ\MA
 Sample : N1105-03 10X
 Misc :
 ALS Vial : 43 Sample Multiplier: 1

Instrument :
 ECD_P
 ClientSampleId :

Integration File signal 1: autoint1.e
 Integration File signal 2: autoint2.e
 Quant Time: Jan 14 00:52:59 2022
 Quant Method : Z:\pestpcbsrv\HPCHEM1\ECD_P\methods\PP011222.M
 Quant Title : GC EXTRACTABLES
 QLast Update : Thu Jan 13 19:45:07 2022
 Response via : Initial Calibration
 Integrator: ChemStation 6890 Scale Mode: Small noise peaks clipped

Volume Inj. : 2 µl
 Signal #1 Phase : ZB-MR1 Signal #2 Phase: ZB-MR2
 Signal #1 Info : 30Mx0.32mmx 0.50µ Signal #2 Info : 30M x 0.32mm x 0.25µm

Compound	RT#1	RT#2	Resp#1	Resp#2	ng/ml	ng/ml

System Monitoring Compounds						
1) SA Tetrachlo...	4.873	4.044	39298	44095	1.661	1.765
2) SA Decachlor...	10.808	9.381	28087	29335	1.921	1.504
Target Compounds						
33) L7 AR-1260-3	8.488	0.000	6919	0	9.170	N.D. #
34) L7 AR-1260-4	8.693f	0.000	3151	0	3.699	N.D. #
36) L8 AR-1262-1	8.488	0.000	6919	0	6.552	N.D. #
38) L8 AR-1262-3	9.347	0.000	3119	0	2.746	N.D. #
40) L8 AR-1262-5	10.072	0.000	4106	0	6.756	N.D. #
41) L9 AR-1268-1	9.347	0.000	3119	0	1.513	N.D. #
44) L9 AR-1268-4	10.072	0.000	4106	0	6.497	N.D. #

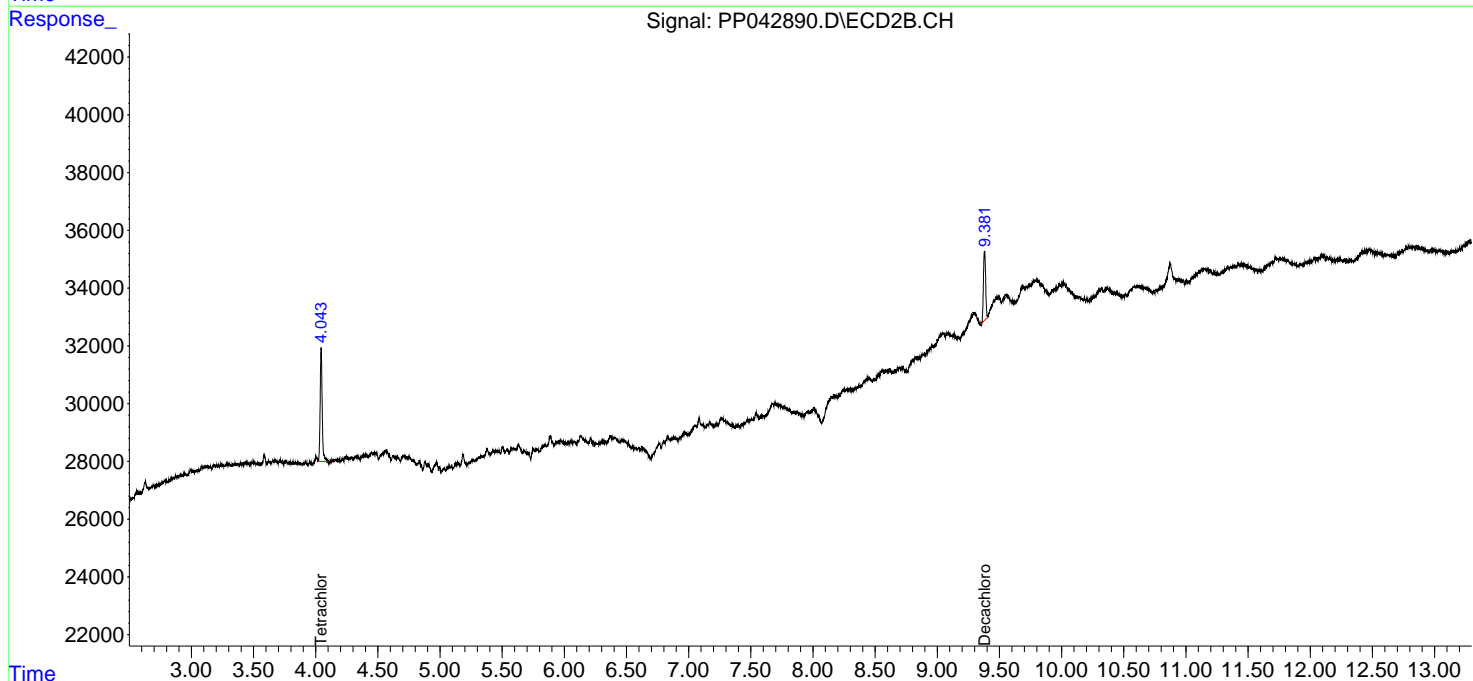
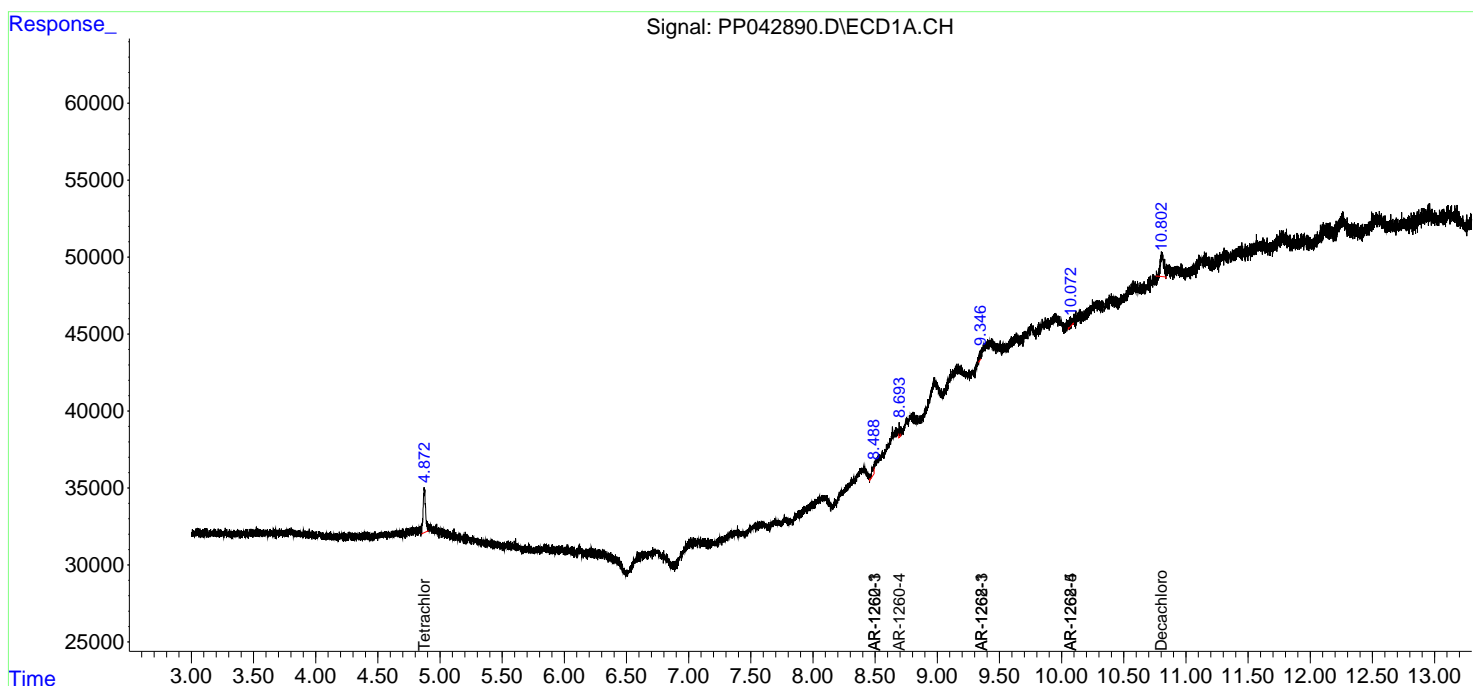
(f)=RT Delta > 1/2 Window (#)=Amounts differ by > 25% (m)=manual int.

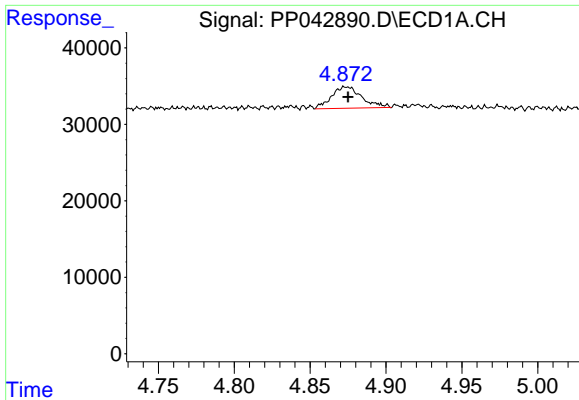
Data Path : Z:\pestpcbsrv\HPCHEM1\ECD_P\Data\PP011322\
 Data File : PP042890.D
 Signal(s) : Signal #1: ECD1A.CH Signal #2: ECD2B.CH
 Acq On : 14 Jan 2022 00:48
 Operator : AJ\MA
 Sample : N1105-03 10X
 Misc :
 ALS Vial : 43 Sample Multiplier: 1

Instrument :
 ECD_P
 ClientSampleId :

Integration File signal 1: autoint1.e
 Integration File signal 2: autoint2.e
 Quant Time: Jan 14 00:52:59 2022
 Quant Method : Z:\pestpcbsrv\HPCHEM1\ECD_P\methods\PP011222.M
 Quant Title : GC EXTRACTABLES
 QLast Update : Thu Jan 13 19:45:07 2022
 Response via : Initial Calibration
 Integrator: ChemStation 6890 Scale Mode: Small noise peaks clipped

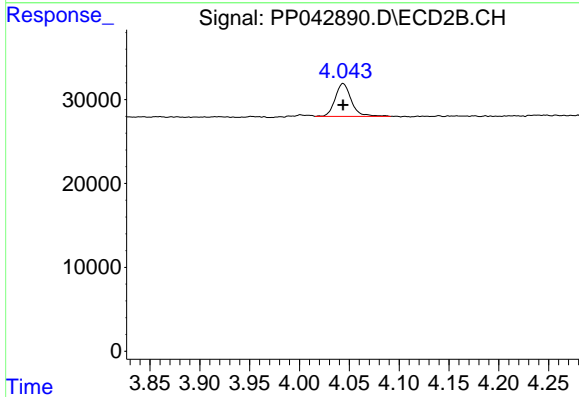
Volume Inj. : 2 µl
 Signal #1 Phase : ZB-MR1 Signal #2 Phase: ZB-MR2
 Signal #1 Info : 30Mx0.32mmx 0.50µ Signal #2 Info : 30M x 0.32mm x 0.25µm



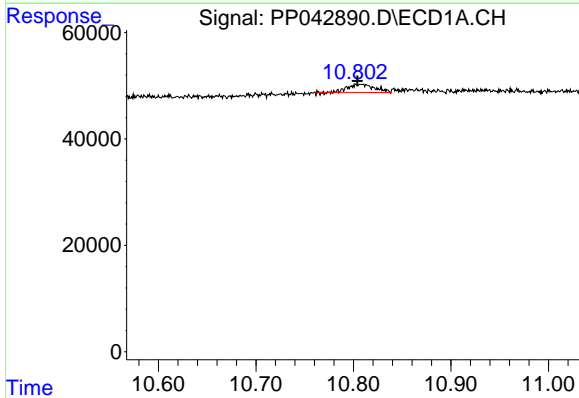


#1 Tetrachloro-m-xylene
 R.T.: 4.873 min
 Delta R.T.: -0.002 min
 Response: 39298
 Conc: 1.66 ng/ml

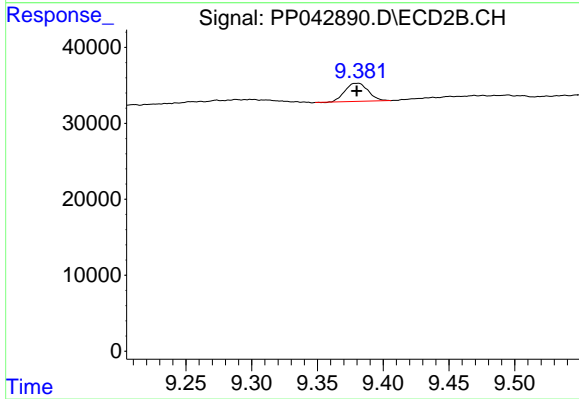
Instrument :
 ECD_P
 ClientSampleId :



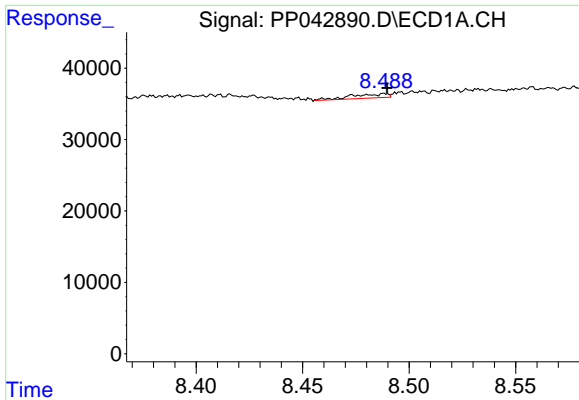
#1 Tetrachloro-m-xylene
 R.T.: 4.044 min
 Delta R.T.: 0.000 min
 Response: 44095
 Conc: 1.77 ng/ml



#2 Decachlorobiphenyl
 R.T.: 10.808 min
 Delta R.T.: 0.004 min
 Response: 28087
 Conc: 1.92 ng/ml



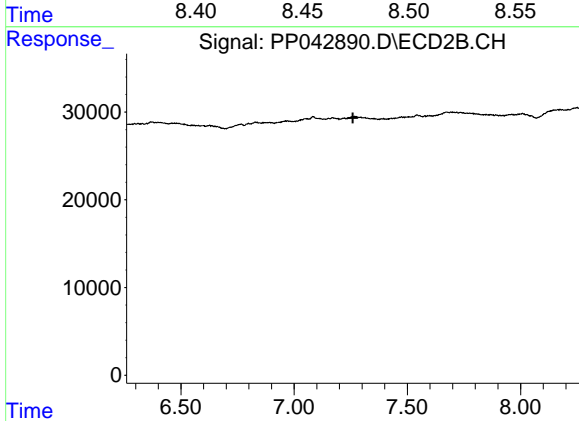
#2 Decachlorobiphenyl
 R.T.: 9.381 min
 Delta R.T.: 0.001 min
 Response: 29335
 Conc: 1.50 ng/ml



#33 AR-1260-3

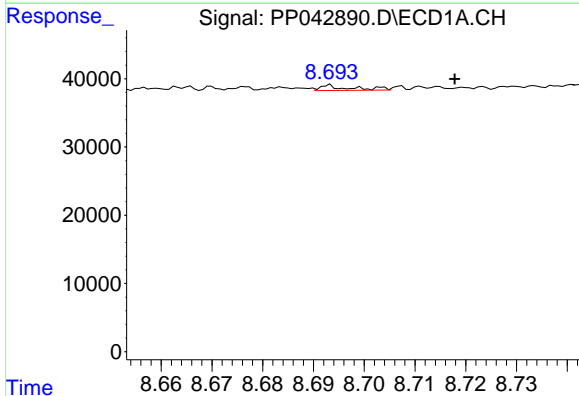
R.T.: 8.488 min
 Delta R.T.: -0.001 min
 Response: 6919
 Conc: 9.17 ng/ml

Instrument :
 ECD_P
 ClientSampleId :



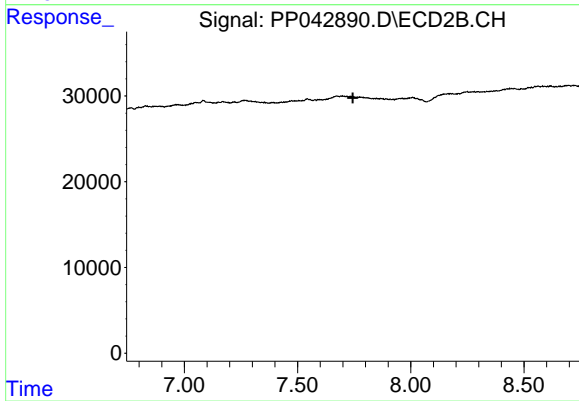
#33 AR-1260-3

R.T.: 0.000 min
 Exp R.T. : 7.260 min
 Response: 0
 Conc: N.D.



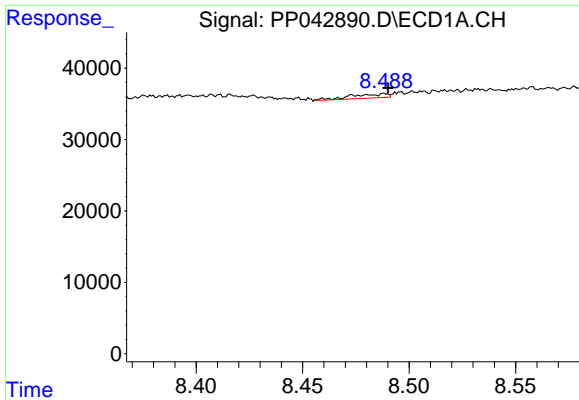
#34 AR-1260-4

R.T.: 8.693 min
 Delta R.T.: -0.025 min
 Response: 3151
 Conc: 3.70 ng/ml



#34 AR-1260-4

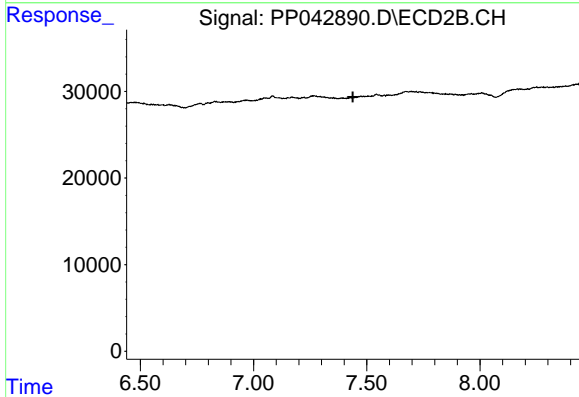
R.T.: 0.000 min
 Exp R.T. : 7.745 min
 Response: 0
 Conc: N.D.



#36 AR-1262-1

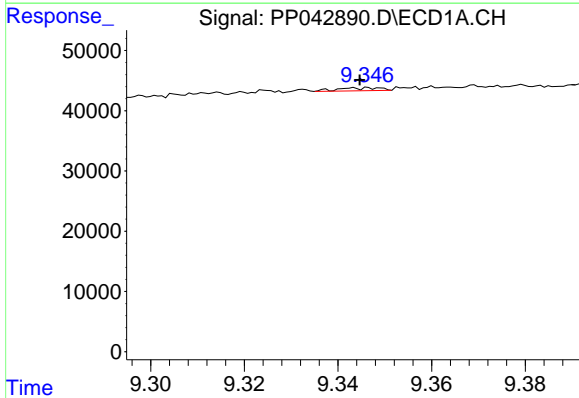
R.T.: 8.488 min
 Delta R.T.: -0.002 min
 Response: 6919
 Conc: 6.55 ng/ml

Instrument :
 ECD_P
 ClientSampleId :



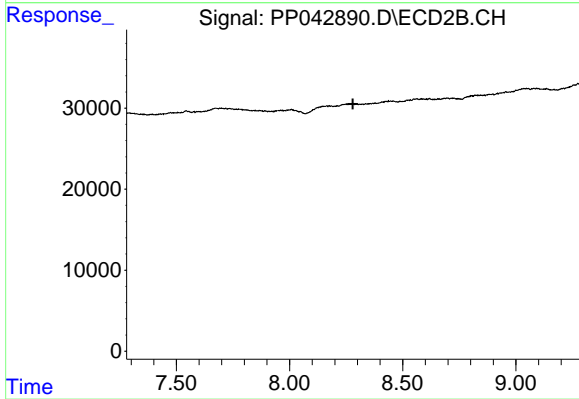
#36 AR-1262-1

R.T.: 0.000 min
 Exp R.T. : 7.439 min
 Response: 0
 Conc: N.D.



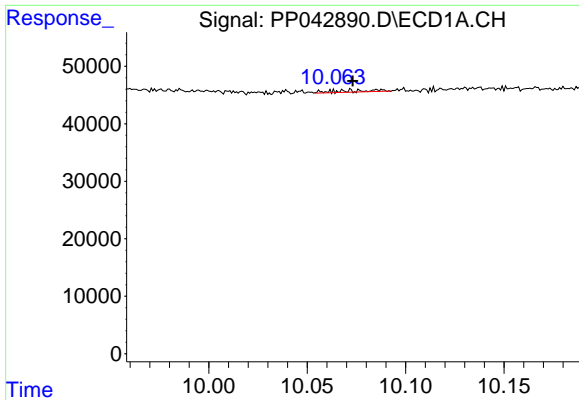
#38 AR-1262-3

R.T.: 9.347 min
 Delta R.T.: 0.002 min
 Response: 3119
 Conc: 2.75 ng/ml



#38 AR-1262-3

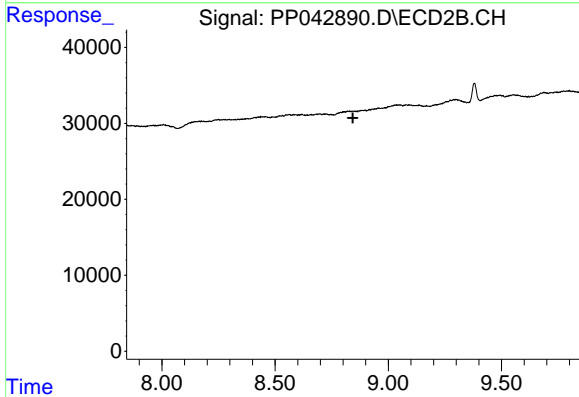
R.T.: 0.000 min
 Exp R.T. : 8.280 min
 Response: 0
 Conc: N.D.



#40 AR-1262-5

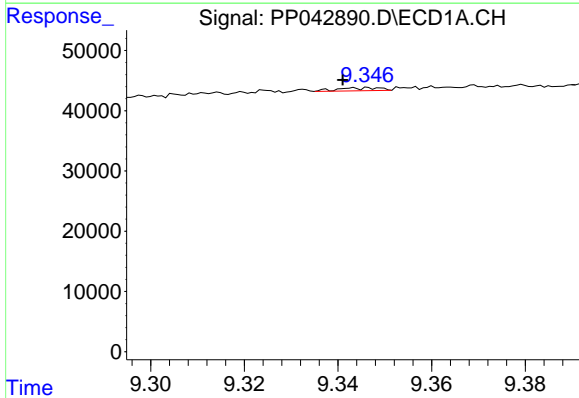
R.T.: 10.072 min
 Delta R.T.: -0.001 min
 Response: 4106
 Conc: 6.76 ng/ml

Instrument :
 ECD_P
 ClientSampleId :



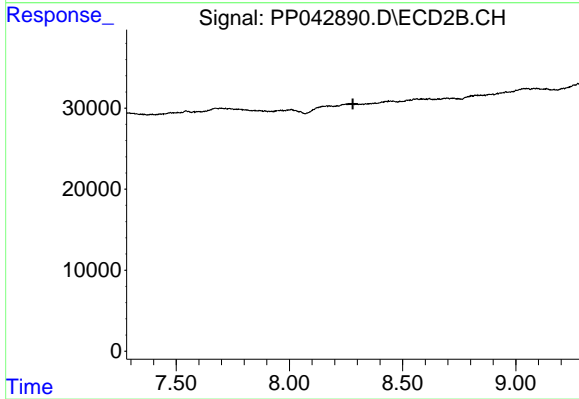
#40 AR-1262-5

R.T.: 0.000 min
 Exp R.T. : 8.844 min
 Response: 0
 Conc: N.D.



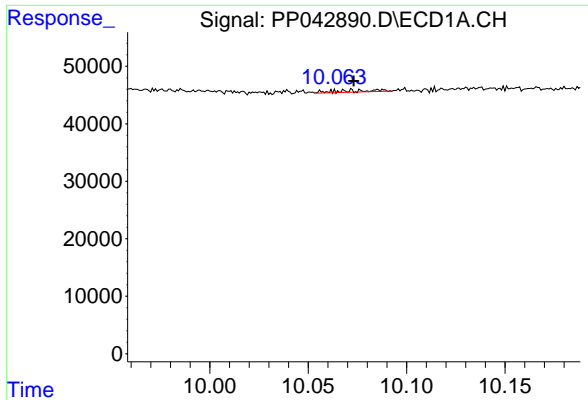
#41 AR-1268-1

R.T.: 9.347 min
 Delta R.T.: 0.006 min
 Response: 3119
 Conc: 1.51 ng/ml



#41 AR-1268-1

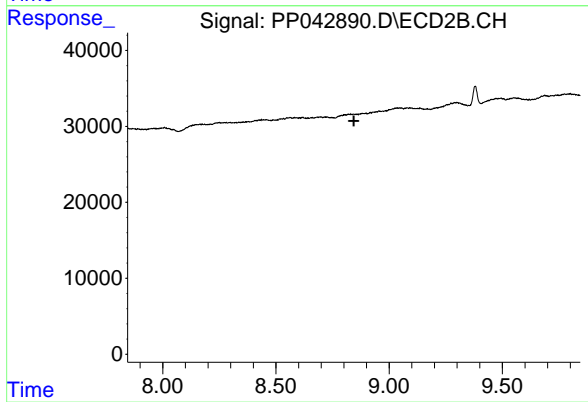
R.T.: 0.000 min
 Exp R.T. : 8.280 min
 Response: 0
 Conc: N.D.



#44 AR-1268-4

R.T.: 10.072 min
Delta R.T.: -0.001 min
Response: 4106
Conc: 6.50 ng/ml

Instrument :
ECD_P
ClientSampleId :



#44 AR-1268-4

R.T.: 0.000 min
Exp R.T. : 8.844 min
Response: 0
Conc: N.D.