

Data Path : Z:\pestpcbsrv\HPCHEM1\ECD\_P\Data\PP011421\  
 Data File : PP032731.D  
 Signal(s) : Signal #1: ECD1A.CH Signal #2: ECD2B.CH  
 Acq On : 14 Jan 2021 8:31  
 Operator : DD\AJ  
 Sample : AR1660CCC500  
 Misc :  
 ALS Vial : 5 Sample Multiplier: 1

Instrument :  
 ECD\_P  
 ClientSampleId :  
 AR1660CCC500

Integration File signal 1: autoint1.e  
 Integration File signal 2: autoint2.e  
 Quant Time: Jan 14 11:55:11 2021  
 Quant Method : Z:\pestpcbsrv\HPCHEM1\ECD\_P\methods\PP011421.M  
 Quant Title : GC EXTRACTABLES  
 QLast Update : Thu Jan 14 08:12:55 2021  
 Response via : Initial Calibration  
 Integrator: ChemStation 6890 Scale Mode: Small noise peaks clipped

Volume Inj. : 2 µl  
 Signal #1 Phase : ZB-MR1 Signal #2 Phase: ZB-MR2  
 Signal #1 Info : 30Mx0.32mmx 0.50µ Signal #2 Info : 30M x 0.32mm x 0.25µm

Compound	RT#1	RT#2	Resp#1	Resp#2	ng/ml	ng/ml
-----						
System Monitoring Compounds						
1) SA Tetrachlo...	4.747	4.010	3075564	2425592	52.953	51.564
2) SA Decachlor...	10.583	9.296	2065085	1908729	52.343	50.950
Target Compounds						
3) L1 AR-1016-1	6.049	5.261	858479	679620	528.430	500.341
4) L1 AR-1016-2	6.072	5.282	1292305	1009384	522.990	497.649
5) L1 AR-1016-3	6.138	5.473	779735	550483	524.880	503.818
6) L1 AR-1016-4	6.243	5.524	669008	417339	537.510	515.535
7) L1 AR-1016-5	6.557	5.752	632428	538824	557.272	500.094
31) L7 AR-1260-1	7.727	6.846	977763	962242	512.895	504.423
32) L7 AR-1260-2	7.992	7.044	1242558	1142174	514.478	501.204
33) L7 AR-1260-3	8.356	7.198	1064143	1098851	527.952	502.511
34) L7 AR-1260-4	8.584	7.680	1076708	930421	522.560	509.174
35) L7 AR-1260-5	8.897	7.928	2368074	2183387	522.762	507.567

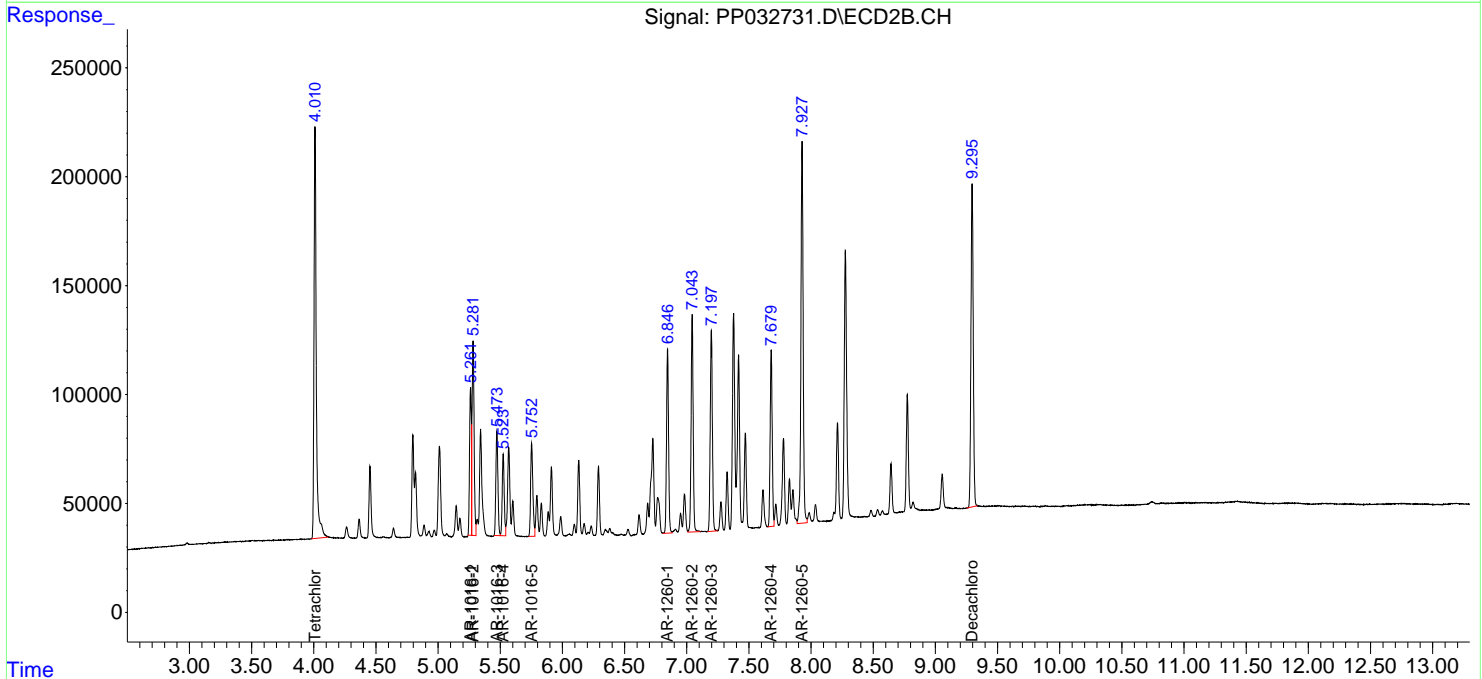
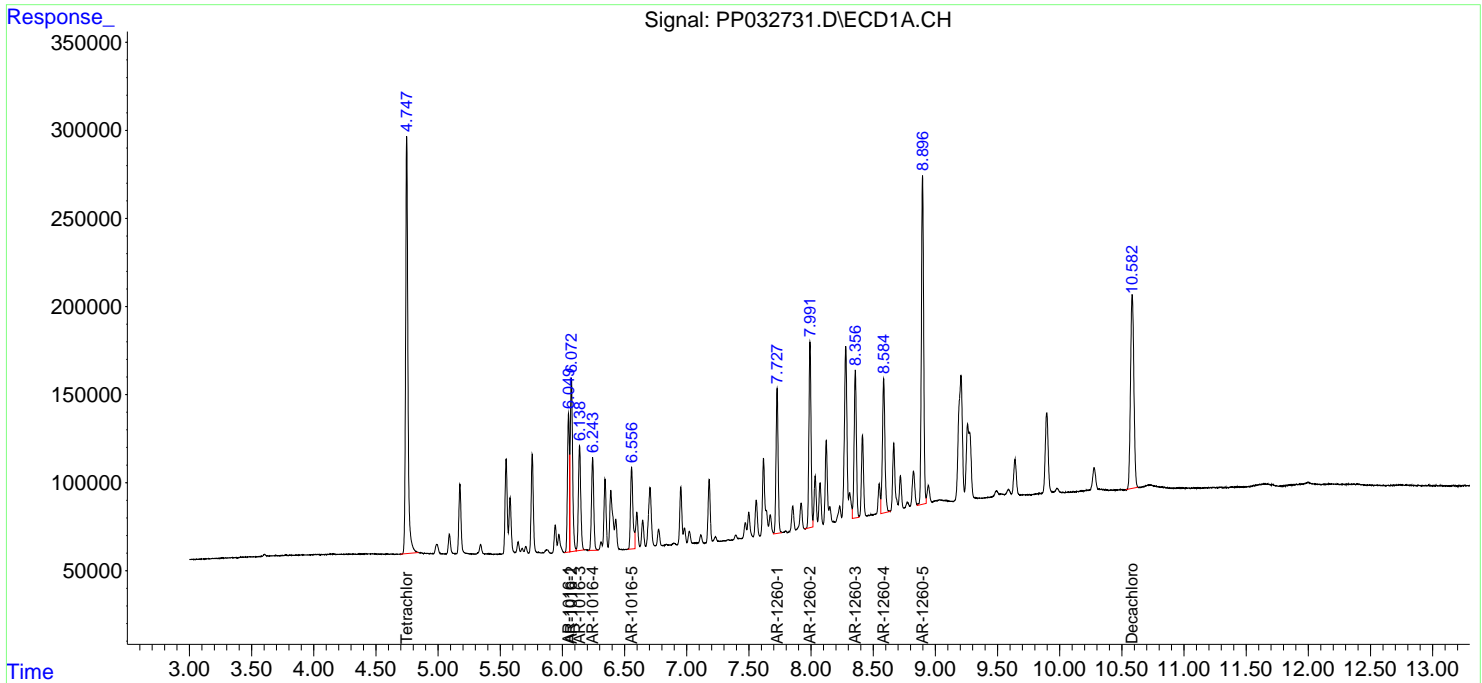
(f)=RT Delta > 1/2 Window (#)=Amounts differ by > 25% (m)=manual int.

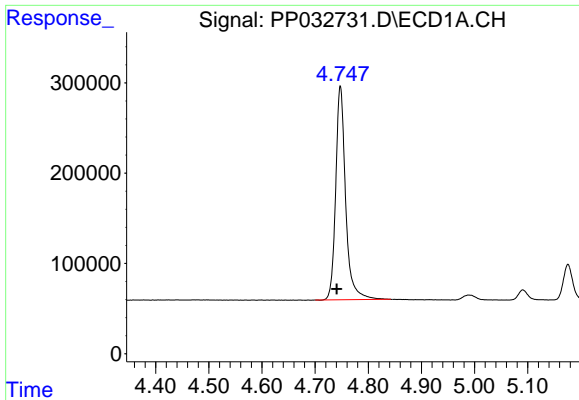
Data Path : Z:\pestpcbsrv\HPCHEM1\ECD\_P\Data\PP011421\  
 Data File : PP032731.D  
 Signal(s) : Signal #1: ECD1A.CH Signal #2: ECD2B.CH  
 Acq On : 14 Jan 2021 8:31  
 Operator : DD\AJ  
 Sample : AR1660CCC500  
 Misc :  
 ALS Vial : 5 Sample Multiplier: 1

Instrument :  
 ECD\_P  
 Client Sampled :  
 AR1660CCC500

Integration File signal 1: autoint1.e  
 Integration File signal 2: autoint2.e  
 Quant Time: Jan 14 11:55:11 2021  
 Quant Method : Z:\pestpcbsrv\HPCHEM1\ECD\_P\methods\PP011421.M  
 Quant Title : GC EXTRACTABLES  
 QLast Update : Thu Jan 14 08:12:55 2021  
 Response via : Initial Calibration  
 Integrator: ChemStation 6890 Scale Mode: Small noise peaks clipped

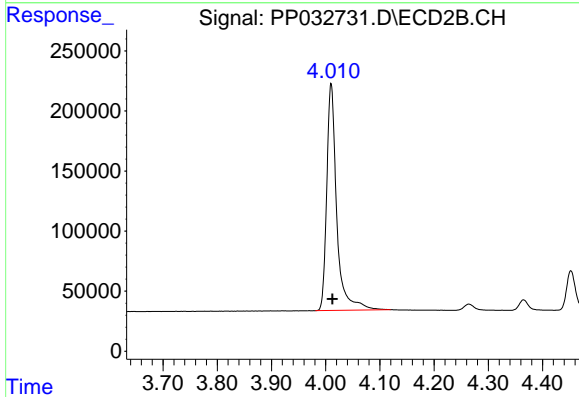
Volume Inj. : 2 µl  
 Signal #1 Phase : ZB-MR1 Signal #2 Phase: ZB-MR2  
 Signal #1 Info : 30Mx0.32mmx 0.50µ Signal #2 Info : 30M x 0.32mm x 0.25µm



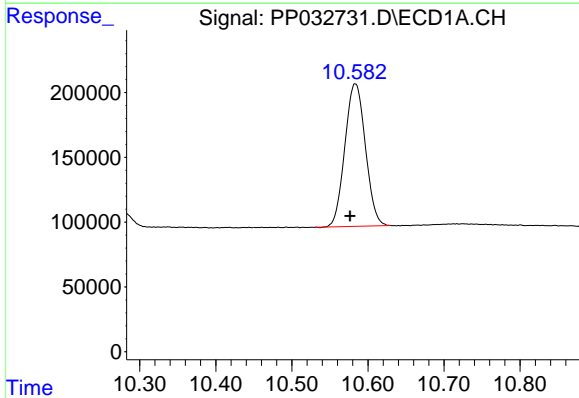


#1 Tetrachloro-m-xylene  
 R.T.: 4.747 min  
 Delta R.T.: 0.006 min  
 Response: 3075564  
 Conc: 52.95 ng/ml

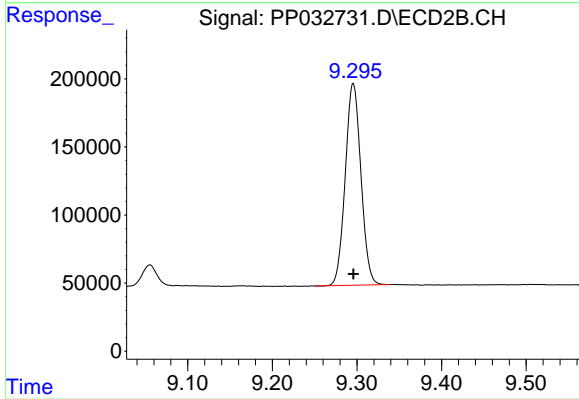
Instrument :  
 ECD\_P  
 ClientSampleId :  
 AR1660CCC500



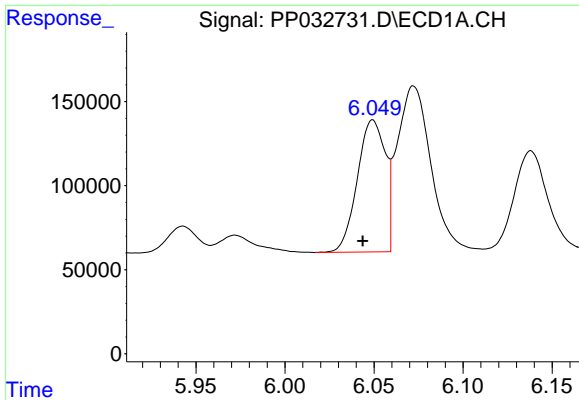
#1 Tetrachloro-m-xylene  
 R.T.: 4.010 min  
 Delta R.T.: -0.003 min  
 Response: 2425592  
 Conc: 51.56 ng/ml



#2 Decachlorobiphenyl  
 R.T.: 10.583 min  
 Delta R.T.: 0.007 min  
 Response: 2065085  
 Conc: 52.34 ng/ml



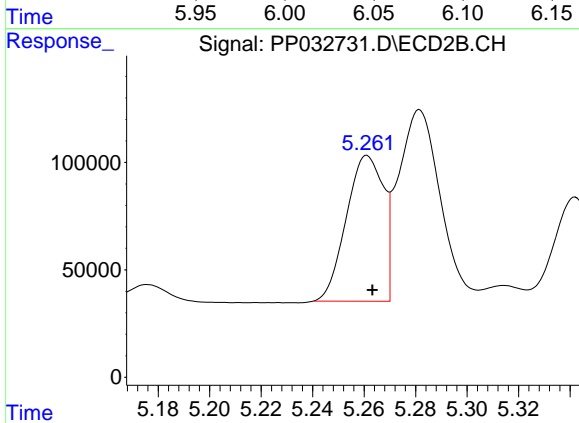
#2 Decachlorobiphenyl  
 R.T.: 9.296 min  
 Delta R.T.: 0.000 min  
 Response: 1908729  
 Conc: 50.95 ng/ml



#3 AR-1016-1

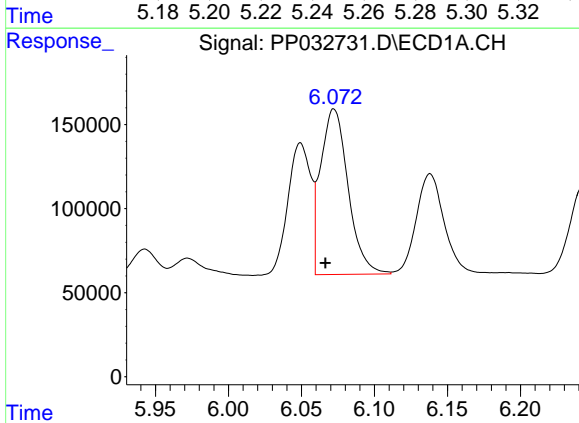
R.T.: 6.049 min  
 Delta R.T.: 0.006 min  
 Response: 858479  
 Conc: 528.43 ng/ml

Instrument :  
 ECD\_P  
 ClientSampleId :  
 AR1660CCC500



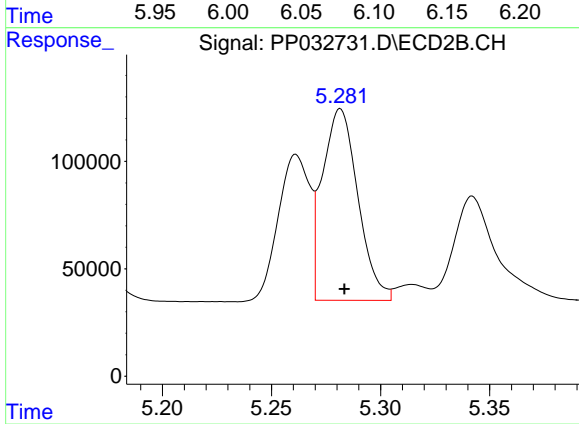
#3 AR-1016-1

R.T.: 5.261 min  
 Delta R.T.: -0.002 min  
 Response: 679620  
 Conc: 500.34 ng/ml



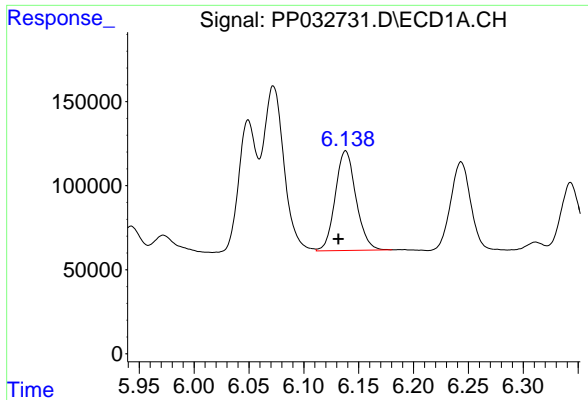
#4 AR-1016-2

R.T.: 6.072 min  
 Delta R.T.: 0.006 min  
 Response: 1292305  
 Conc: 522.99 ng/ml



#4 AR-1016-2

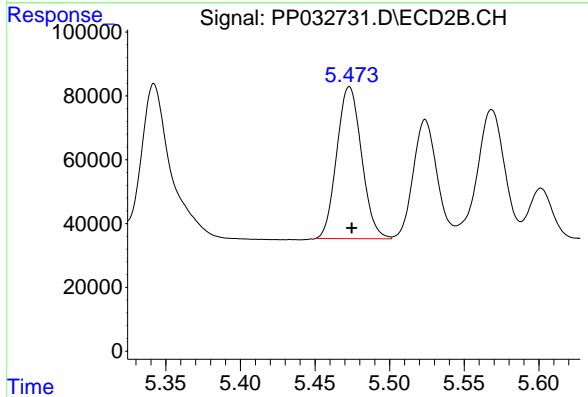
R.T.: 5.282 min  
 Delta R.T.: -0.002 min  
 Response: 1009384  
 Conc: 497.65 ng/ml



#5 AR-1016-3

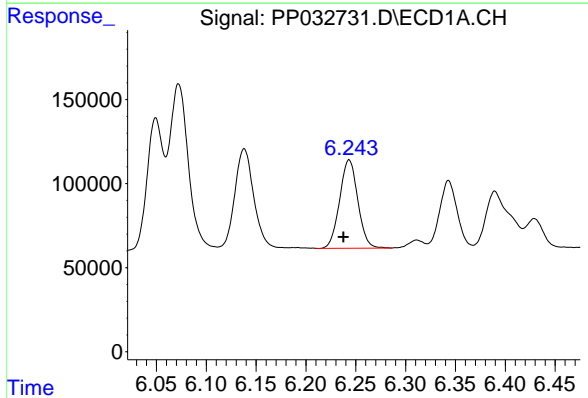
R.T.: 6.138 min  
 Delta R.T.: 0.007 min  
 Response: 779735  
 Conc: 524.88 ng/ml

Instrument :  
 ECD\_P  
 ClientSampleId :  
 AR1660CCC500



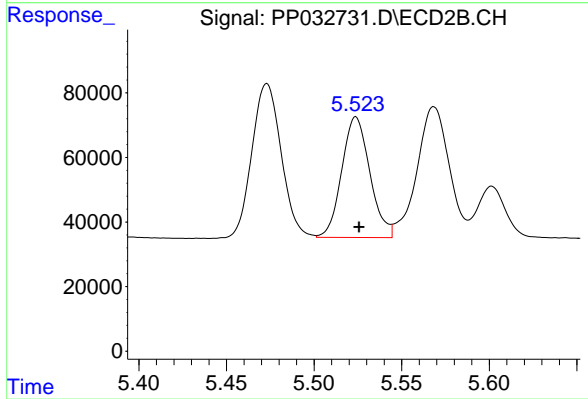
#5 AR-1016-3

R.T.: 5.473 min  
 Delta R.T.: -0.002 min  
 Response: 550483  
 Conc: 503.82 ng/ml



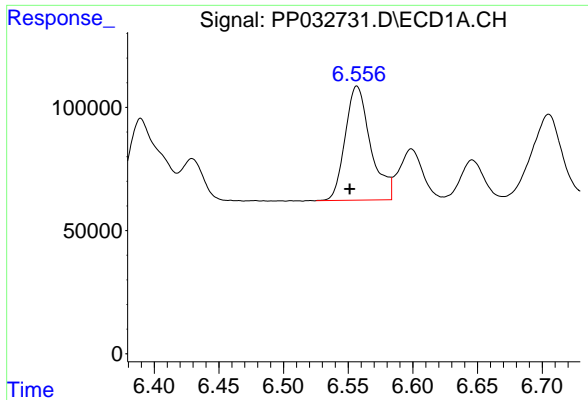
#6 AR-1016-4

R.T.: 6.243 min  
 Delta R.T.: 0.006 min  
 Response: 669008  
 Conc: 537.51 ng/ml



#6 AR-1016-4

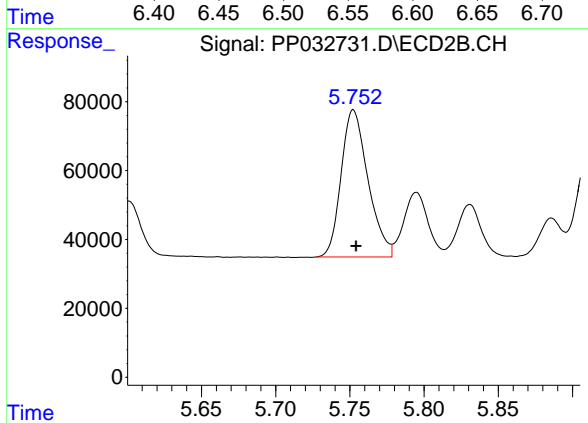
R.T.: 5.524 min  
 Delta R.T.: -0.002 min  
 Response: 417339  
 Conc: 515.54 ng/ml



#7 AR-1016-5

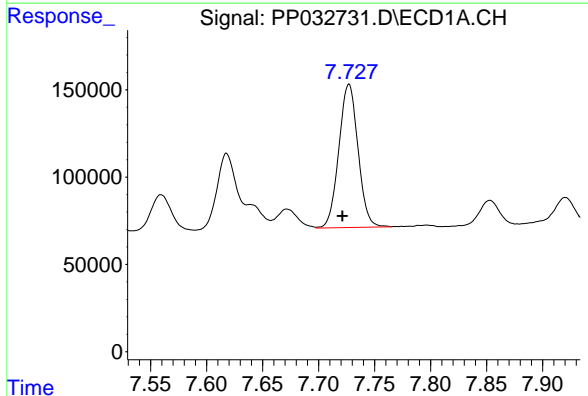
R.T.: 6.557 min  
 Delta R.T.: 0.006 min  
 Response: 632428  
 Conc: 557.27 ng/ml

Instrument :  
 ECD\_P  
 ClientSampleId :  
 AR1660CCC500



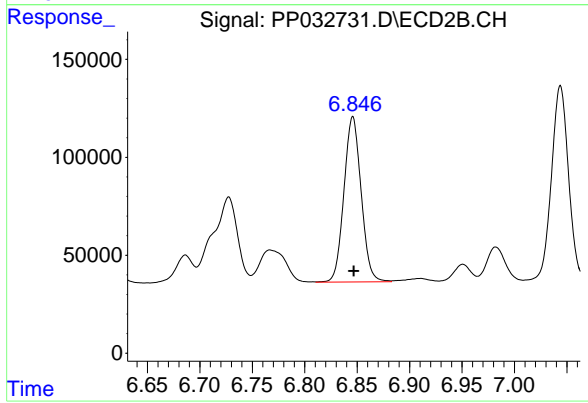
#7 AR-1016-5

R.T.: 5.752 min  
 Delta R.T.: -0.002 min  
 Response: 538824  
 Conc: 500.09 ng/ml



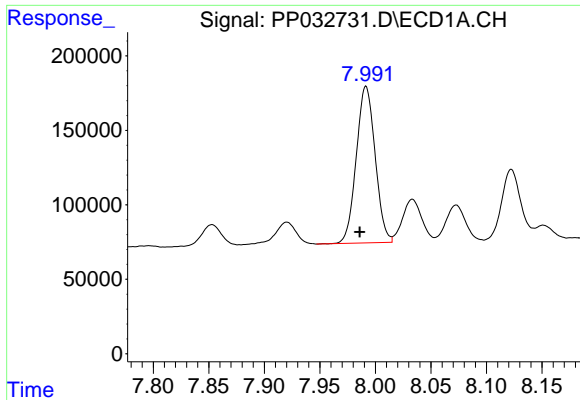
#31 AR-1260-1

R.T.: 7.727 min  
 Delta R.T.: 0.006 min  
 Response: 977763  
 Conc: 512.89 ng/ml



#31 AR-1260-1

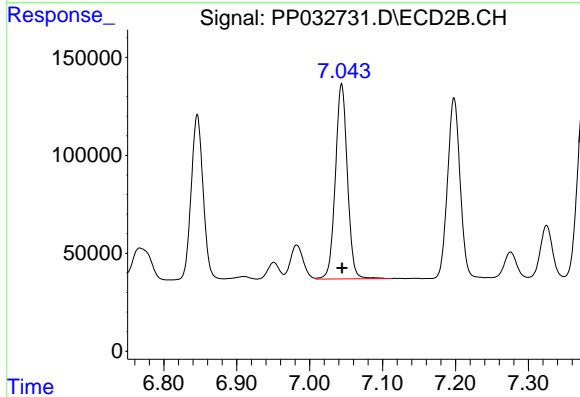
R.T.: 6.846 min  
 Delta R.T.: 0.000 min  
 Response: 962242  
 Conc: 504.42 ng/ml



#32 AR-1260-2

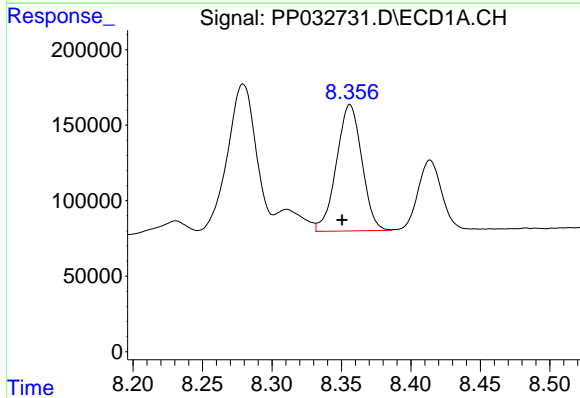
R.T.: 7.992 min  
 Delta R.T.: 0.006 min  
 Response: 1242558  
 Conc: 514.48 ng/ml

Instrument :  
 ECD\_P  
 ClientSampleId :  
 AR1660CCC500



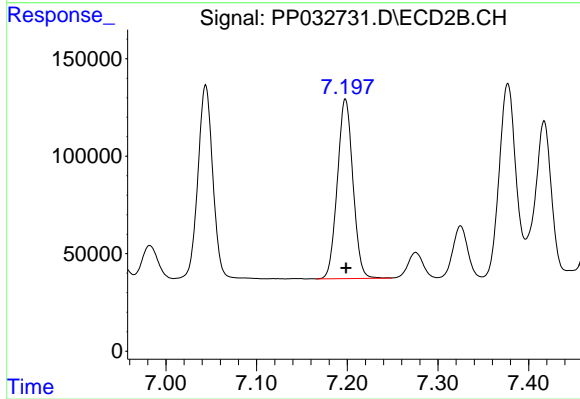
#32 AR-1260-2

R.T.: 7.044 min  
 Delta R.T.: 0.000 min  
 Response: 1142174  
 Conc: 501.20 ng/ml



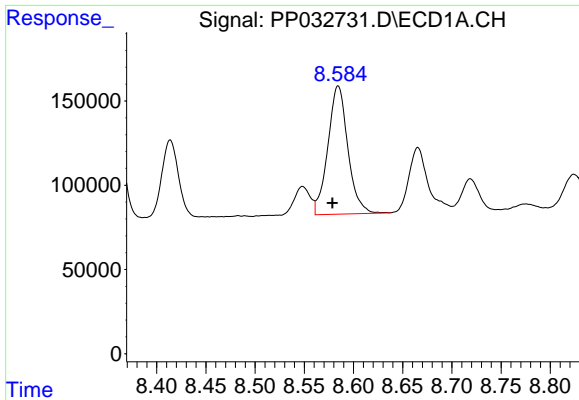
#33 AR-1260-3

R.T.: 8.356 min  
 Delta R.T.: 0.006 min  
 Response: 1064143  
 Conc: 527.95 ng/ml



#33 AR-1260-3

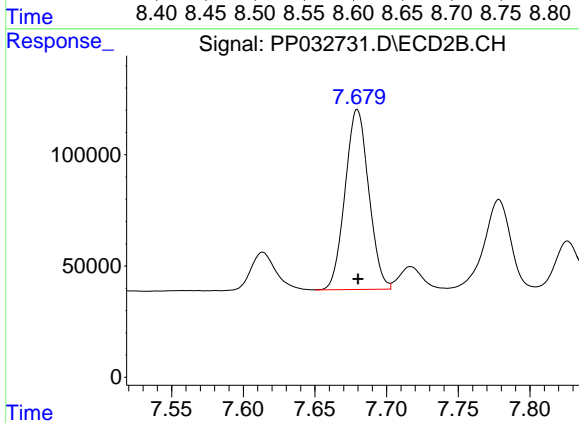
R.T.: 7.198 min  
 Delta R.T.: 0.000 min  
 Response: 1098851  
 Conc: 502.51 ng/ml



#34 AR-1260-4

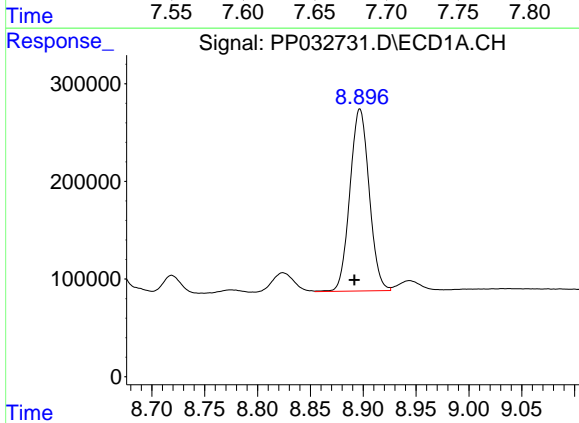
R.T.: 8.584 min  
 Delta R.T.: 0.006 min  
 Response: 1076708  
 Conc: 522.56 ng/ml

Instrument :  
 ECD\_P  
 ClientSampled :  
 AR1660CCC500



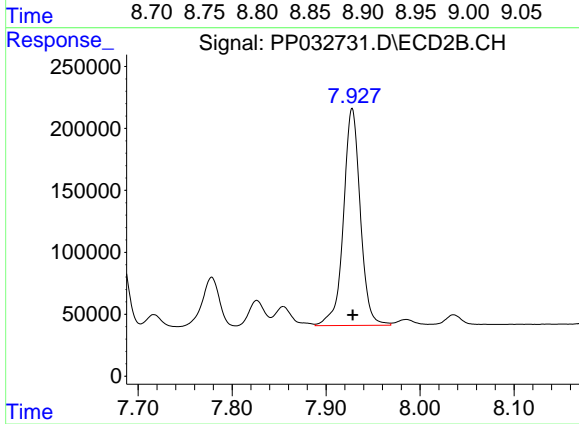
#34 AR-1260-4

R.T.: 7.680 min  
 Delta R.T.: 0.000 min  
 Response: 930421  
 Conc: 509.17 ng/ml



#35 AR-1260-5

R.T.: 8.897 min  
 Delta R.T.: 0.005 min  
 Response: 2368074  
 Conc: 522.76 ng/ml



#35 AR-1260-5

R.T.: 7.928 min  
 Delta R.T.: 0.000 min  
 Response: 2183387  
 Conc: 507.57 ng/ml