

Data Path : Z:\pestpcbsrv\HPCHEM1\ECD_P\Data\PP011422\
 Data File : PP042955.D
 Signal(s) : Signal #1: ECD1A.CH Signal #2: ECD2B.CH
 Acq On : 14 Jan 2022 22:43
 Operator : AJ\MA
 Sample : N1141-06
 Misc :
 ALS Vial : 30 Sample Multiplier: 1

Instrument :
 ECD_P
ClientSampleId :
 101224

Manual Integrations
APPROVED

Reviewed By :Ankita Jodhani 01/17/2022
 Supervised By :Yogesh Patel 01/18/2022

Integration File signal 1: autoint1.e
 Integration File signal 2: autoint2.e
 Quant Time: Jan 15 01:37:16 2022
 Quant Method : Z:\pestpcbsrv\HPCHEM1\ECD_P\methods\PP011222.M
 Quant Title : GC EXTRACTABLES
 QLast Update : Thu Jan 13 19:45:07 2022
 Response via : Initial Calibration
 Integrator: ChemStation 6890 Scale Mode: Small noise peaks clipped

Volume Inj. : 2 µl
 Signal #1 Phase : ZB-MR1 Signal #2 Phase: ZB-MR2
 Signal #1 Info : 30Mx0.32mmx 0.50µ Signal #2 Info : 30M x 0.32mm x 0.25µm

Compound	RT#1	RT#2	Resp#1	Resp#2	ng/ml	ng/ml

System Monitoring Compounds						
1) SA Tetrachlo...	4.876	4.048	320015	388401	13.525	15.551m
2) SA Decachlor...	10.817	9.394	337396	327144	23.080m	16.771m#

Target Compounds

(f)=RT Delta > 1/2 Window (#)=Amounts differ by > 25% (m)=manual int.

Data Path : Z:\pestpcbsrv\HPCHEM1\ECD_P\Data\PP011422\
 Data File : PP042955.D
 Signal(s) : Signal #1: ECD1A.CH Signal #2: ECD2B.CH
 Acq On : 14 Jan 2022 22:43
 Operator : AJ\MA
 Sample : N1141-06
 Misc :
 ALS Vial : 30 Sample Multiplier: 1

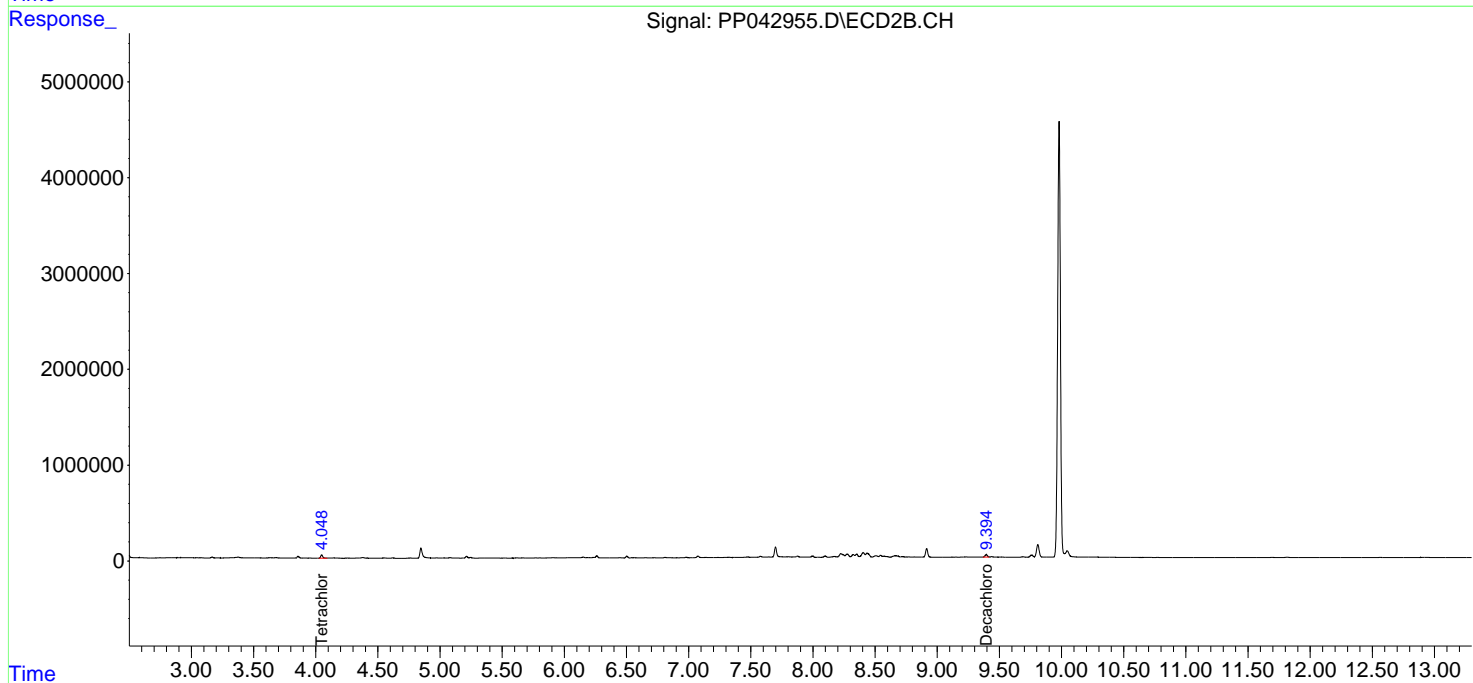
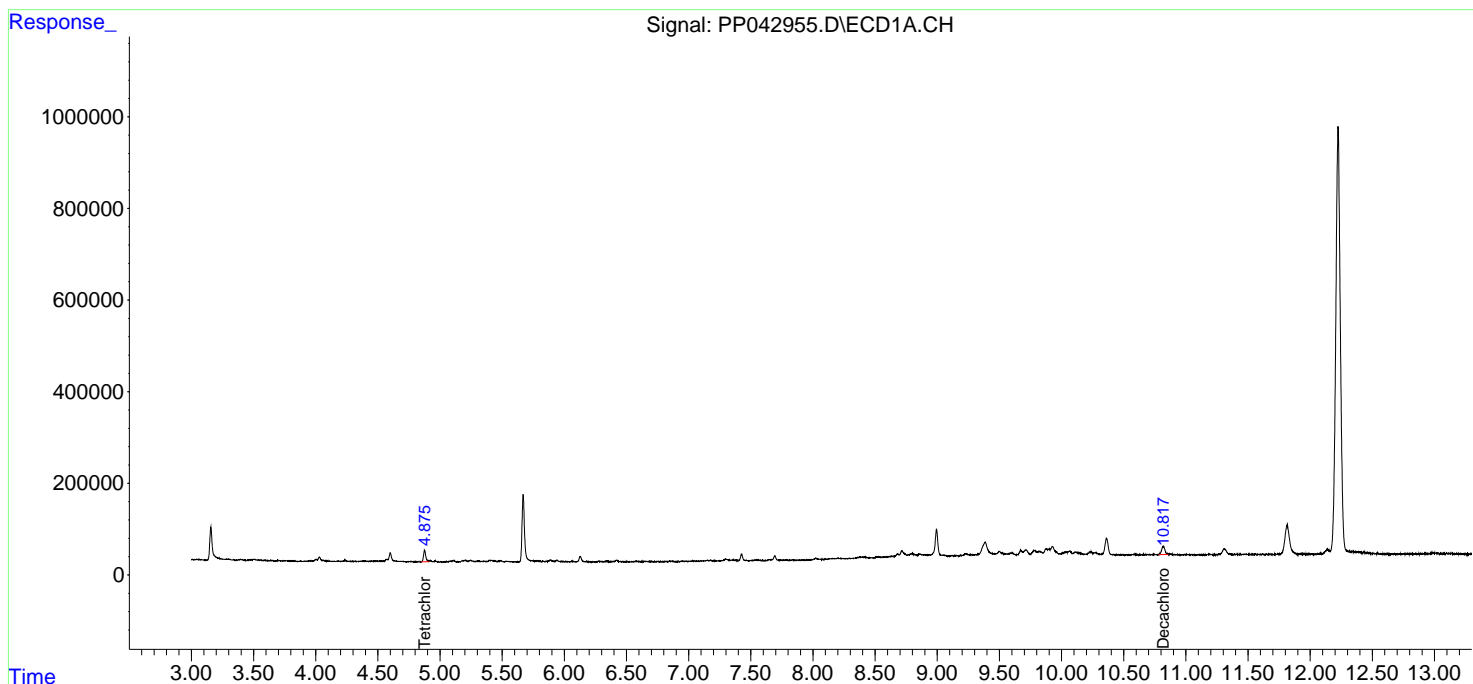
Instrument :
 ECD_P
ClientSampleId :
 101224

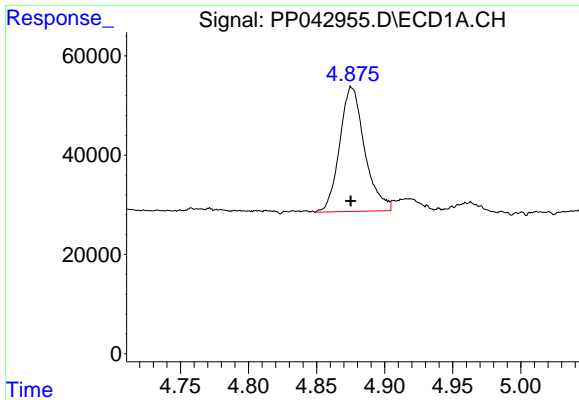
Manual Integrations
APPROVED

Reviewed By :Ankita Jodhani 01/17/2022
 Supervised By :Yogesh Patel 01/18/2022

Integration File signal 1: autoint1.e
 Integration File signal 2: autoint2.e
 Quant Time: Jan 15 01:37:16 2022
 Quant Method : Z:\pestpcbsrv\HPCHEM1\ECD_P\methods\PP011222.M
 Quant Title : GC EXTRACTABLES
 QLast Update : Thu Jan 13 19:45:07 2022
 Response via : Initial Calibration
 Integrator: ChemStation 6890 Scale Mode: Small noise peaks clipped

Volume Inj. : 2 µl
 Signal #1 Phase : ZB-MR1 Signal #2 Phase: ZB-MR2
 Signal #1 Info : 30Mx0.32mmx 0.50µ Signal #2 Info : 30M x 0.32mm x 0.25µm





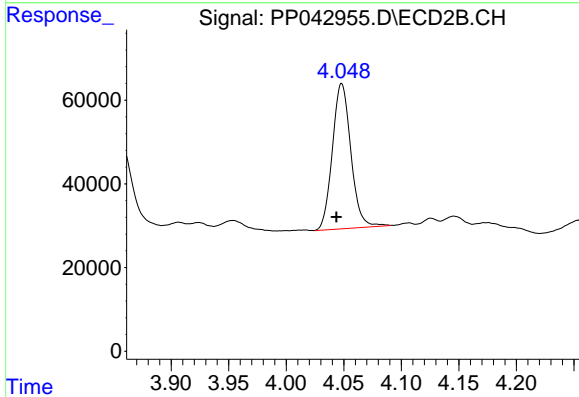
#1 Tetrachloro-m-xylene

R.T.: 4.876 min
 Delta R.T.: 0.000 min
 Response: 320015
 Conc: 13.52 ng/ml

Instrument :
 ECD_P
 ClientSampleId :
 101224

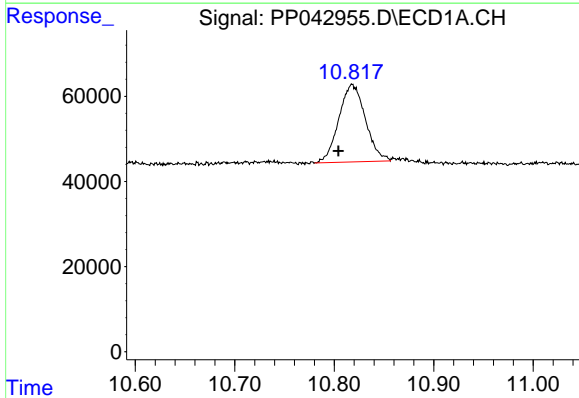
Manual Integrations
 APPROVED

Reviewed By :Ankita Jodhani 01/17/2022
 Supervised By :Yogesh Patel 01/18/2022



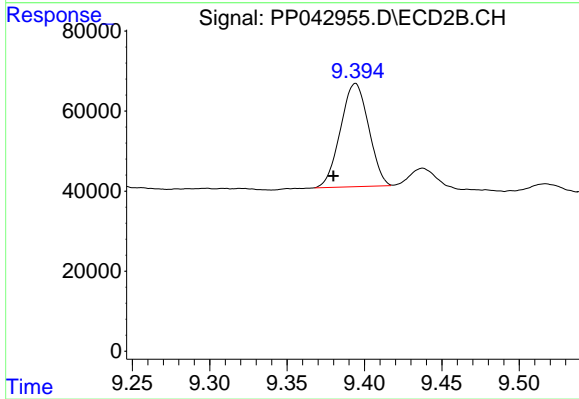
#1 Tetrachloro-m-xylene

R.T.: 4.048 min
 Delta R.T.: 0.004 min
 Response: 388401
 Conc: 15.55 ng/ml m



#2 Decachlorobiphenyl

R.T.: 10.817 min
 Delta R.T.: 0.013 min
 Response: 337396
 Conc: 23.08 ng/ml m



#2 Decachlorobiphenyl

R.T.: 9.394 min
 Delta R.T.: 0.014 min
 Response: 327144
 Conc: 16.77 ng/ml m