

Data Path : Z:\pestpcbsrv\HPCHEM1\ECD\_P\Data\PP011425\  
 Data File : PP069119.D  
 Signal(s) : Signal #1: ECD1A.ch Signal #2: ECD2B.ch  
 Acq On : 14 Jan 2025 14:28  
 Operator : YP\AJ  
 Sample : AR1248CCC500  
 Misc :  
 ALS Vial : 5 Sample Multiplier: 1

**Instrument :**  
 ECD\_P  
**ClientSampleId :**  
 AR1248CCC500

Integration File signal 1: autoint1.e  
 Integration File signal 2: autoint2.e  
 Quant Time: Jan 15 00:53:52 2025  
 Quant Method : Z:\pestpcbsrv\HPCHEM1\ECD\_P\methods\PP010625.M  
 Quant Title : GC EXTRACTABLES  
 QLast Update : Tue Jan 07 11:05:55 2025  
 Response via : Initial Calibration  
 Integrator: ChemStation

Volume Inj. : 2 µl  
 Signal #1 Phase : ZB-MR1 Signal #2 Phase: ZB-MR2  
 Signal #1 Info : 30Mx0.32mmx 0.50µ Signal #2 Info : 30M x 0.32mm x 0.25µm

Compound	RT#1	RT#2	Resp#1	Resp#2	ng/ml	ng/ml
-----						
System Monitoring Compounds						
1) SA Tetrachlo...	4.668	3.979	69716243	47843095	50.109	49.011
2) SA Decachlor...	10.512	9.102	51194420	56651147	45.854	47.158
Target Compounds						
21) L5 AR-1248-1	5.828	5.079	13846693	11652755	470.533	506.660
22) L5 AR-1248-2	6.100	5.318	19697376	16766960	456.794	491.100
23) L5 AR-1248-3	6.305	5.362	21784323	17379702	461.752	491.885
24) L5 AR-1248-4	6.704	5.536	25145133	19827881	468.245	481.706
25) L5 AR-1248-5	6.744	5.932	24180021	19203431	464.846	496.390
-----						

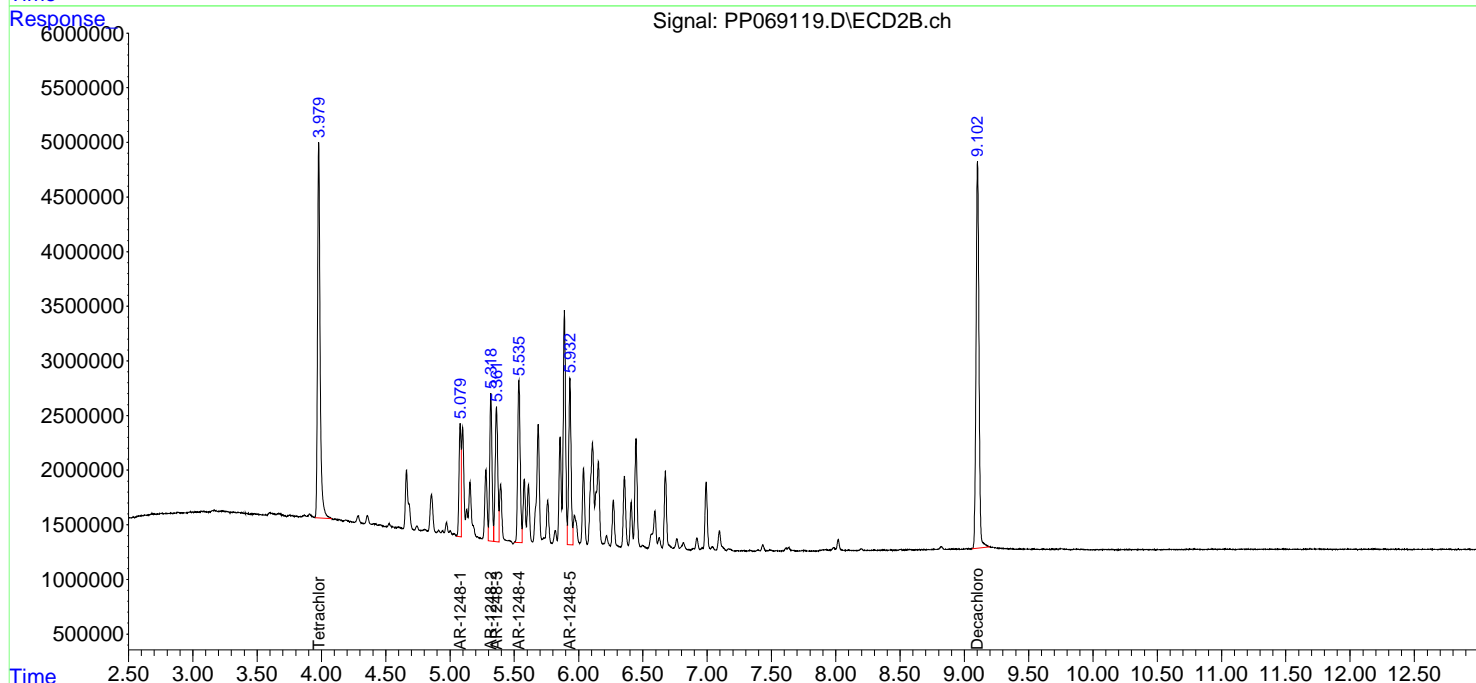
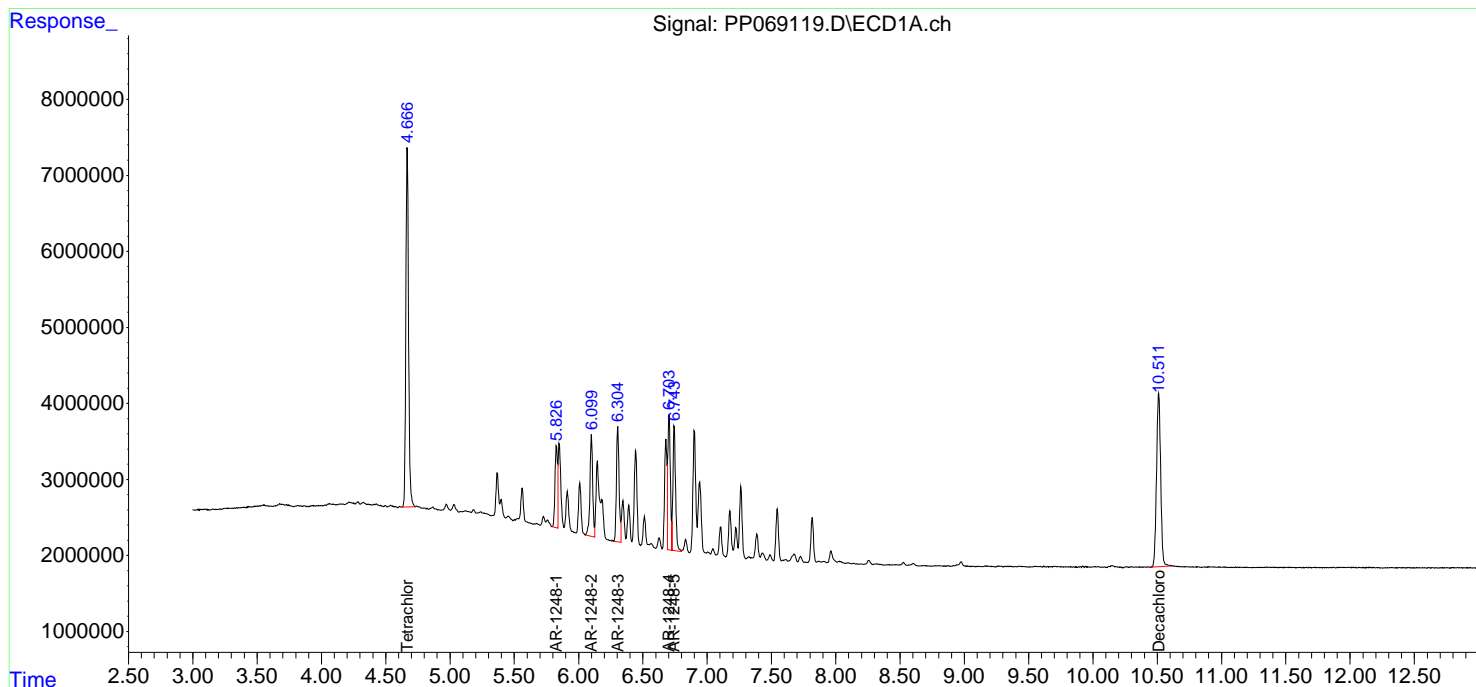
(f)=RT Delta > 1/2 Window (#)=Amounts differ by > 25% (m)=manual int.

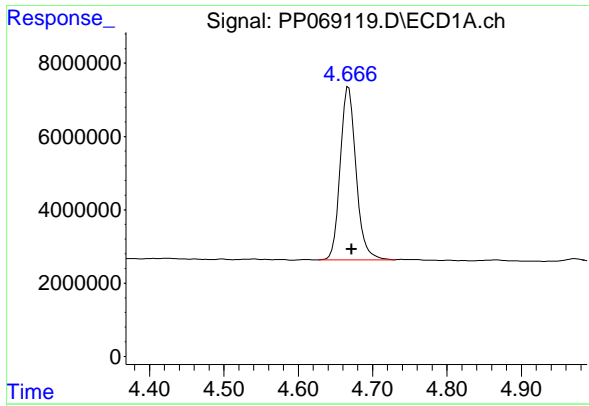
Data Path : Z:\pestpcbsrv\HPCHEM1\ECD\_P\Data\PP011425\  
 Data File : PP069119.D  
 Signal(s) : Signal #1: ECD1A.ch Signal #2: ECD2B.ch  
 Acq On : 14 Jan 2025 14:28  
 Operator : YP\AJ  
 Sample : AR1248CCC500  
 Misc :  
 ALS Vial : 5 Sample Multiplier: 1

Instrument :  
 ECD\_P  
 ClientSampleId :  
 AR1248CCC500

Integration File signal 1: autoint1.e  
 Integration File signal 2: autoint2.e  
 Quant Time: Jan 15 00:53:52 2025  
 Quant Method : Z:\pestpcbsrv\HPCHEM1\ECD\_P\methods\PP010625.M  
 Quant Title : GC EXTRACTABLES  
 QLast Update : Tue Jan 07 11:05:55 2025  
 Response via : Initial Calibration  
 Integrator: ChemStation

Volume Inj. : 2 µl  
 Signal #1 Phase : ZB-MR1 Signal #2 Phase: ZB-MR2  
 Signal #1 Info : 30Mx0.32mmx 0.50µm Signal #2 Info : 30M x 0.32mm x 0.25µm

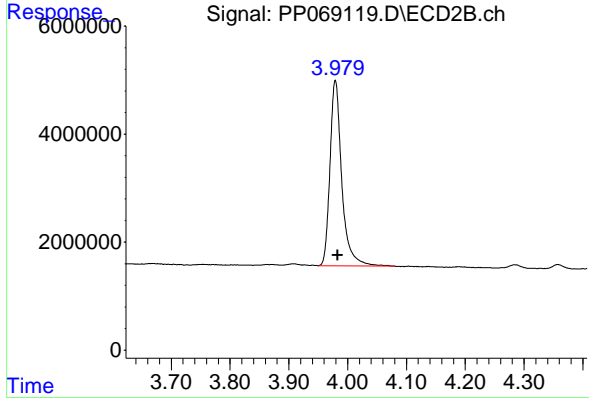




#1 Tetrachloro-m-xylene

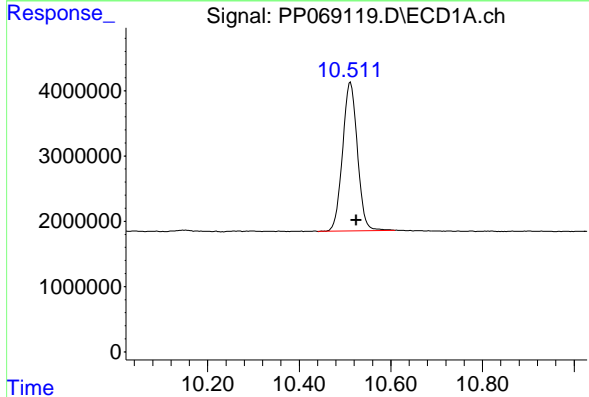
R.T.: 4.668 min  
 Delta R.T.: -0.004 min  
 Response: 69716243  
 Conc: 50.11 ng/ml

Instrument :  
 ECD\_P  
 ClientSampleId :  
 AR1248CCC500



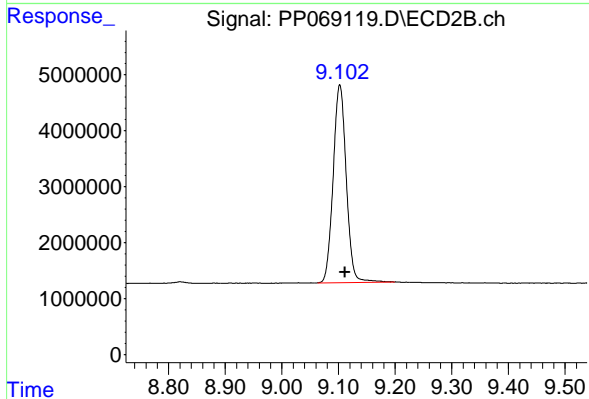
#1 Tetrachloro-m-xylene

R.T.: 3.979 min  
 Delta R.T.: -0.004 min  
 Response: 47843095  
 Conc: 49.01 ng/ml



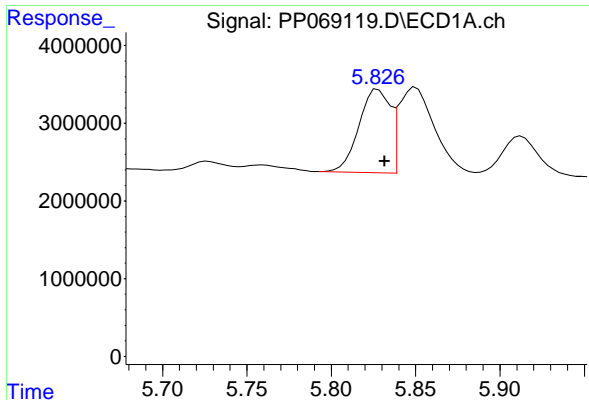
#2 Decachlorobiphenyl

R.T.: 10.512 min  
 Delta R.T.: -0.012 min  
 Response: 51194420  
 Conc: 45.85 ng/ml



#2 Decachlorobiphenyl

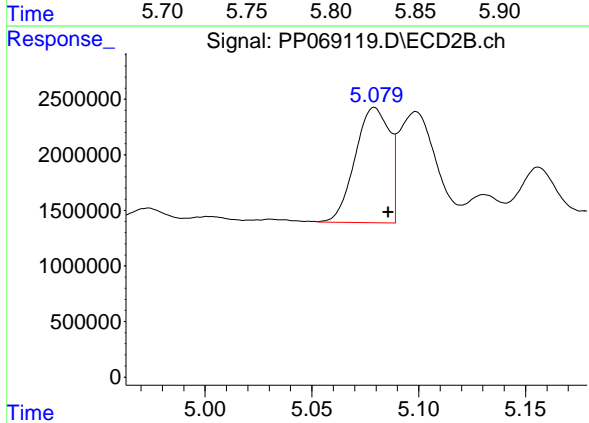
R.T.: 9.102 min  
 Delta R.T.: -0.009 min  
 Response: 56651147  
 Conc: 47.16 ng/ml



#21 AR-1248-1

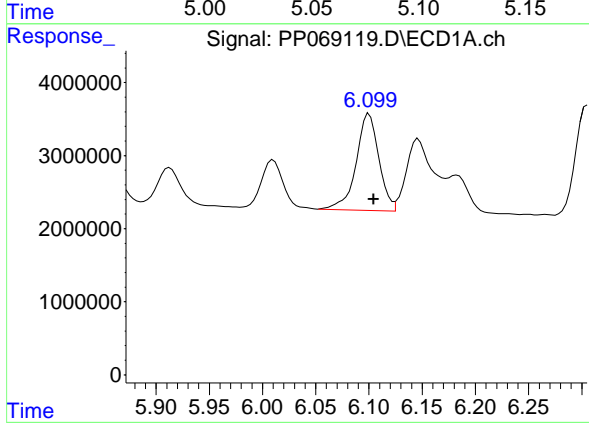
R.T.: 5.828 min  
 Delta R.T.: -0.004 min  
 Response: 13846693  
 Conc: 470.53 ng/ml

Instrument :  
 ECD\_P  
 ClientSampleId :  
 AR1248CCC500



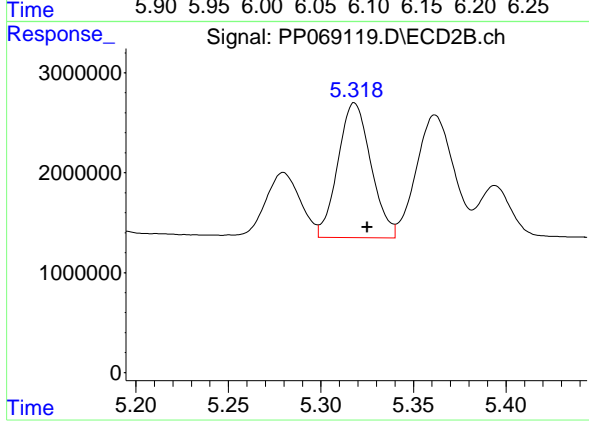
#21 AR-1248-1

R.T.: 5.079 min  
 Delta R.T.: -0.006 min  
 Response: 11652755  
 Conc: 506.66 ng/ml



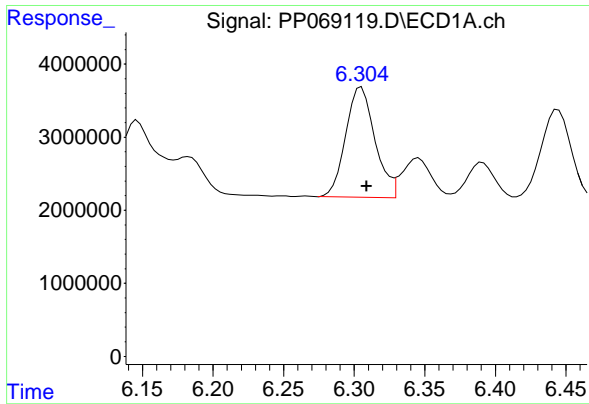
#22 AR-1248-2

R.T.: 6.100 min  
 Delta R.T.: -0.004 min  
 Response: 19697376  
 Conc: 456.79 ng/ml



#22 AR-1248-2

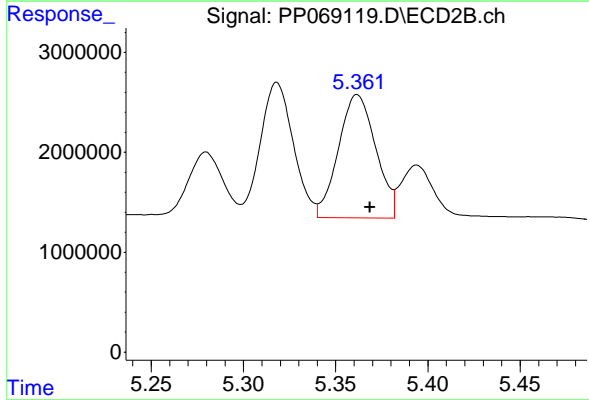
R.T.: 5.318 min  
 Delta R.T.: -0.007 min  
 Response: 16766960  
 Conc: 491.10 ng/ml



#23 AR-1248-3

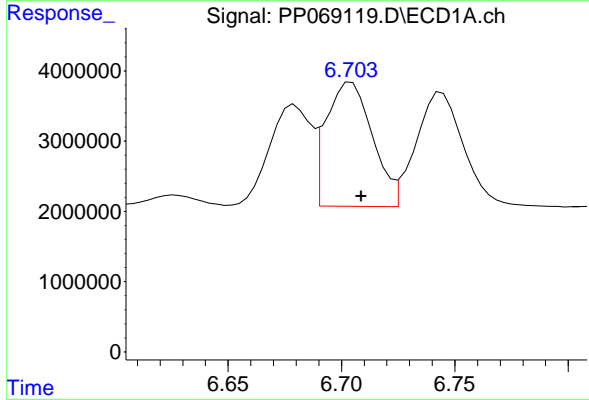
R.T.: 6.305 min  
 Delta R.T.: -0.004 min  
 Response: 21784323  
 Conc: 461.75 ng/ml

Instrument :  
 ECD\_P  
 ClientSampleId :  
 AR1248CCC500



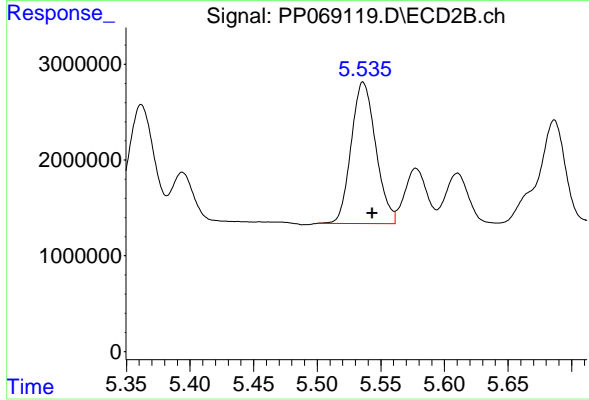
#23 AR-1248-3

R.T.: 5.362 min  
 Delta R.T.: -0.007 min  
 Response: 17379702  
 Conc: 491.88 ng/ml



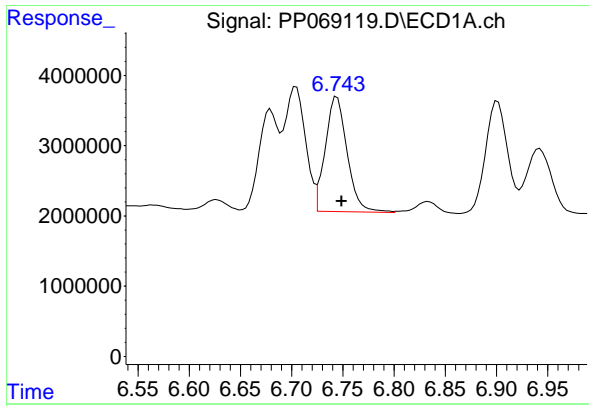
#24 AR-1248-4

R.T.: 6.704 min  
 Delta R.T.: -0.004 min  
 Response: 25145133  
 Conc: 468.25 ng/ml



#24 AR-1248-4

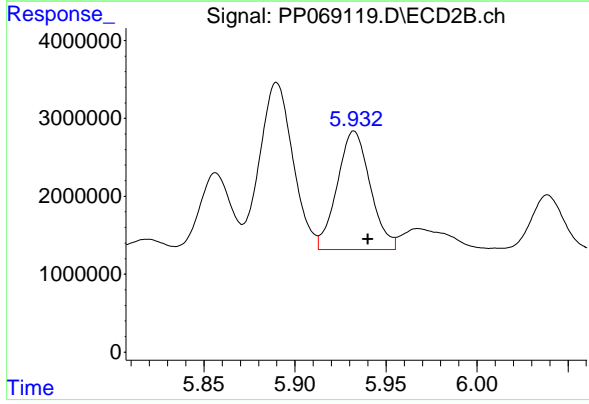
R.T.: 5.536 min  
 Delta R.T.: -0.007 min  
 Response: 19827881  
 Conc: 481.71 ng/ml



#25 AR-1248-5

R.T.: 6.744 min  
Delta R.T.: -0.004 min  
Response: 24180021  
Conc: 464.85 ng/ml

Instrument :  
ECD\_P  
ClientSampleId :  
AR1248CCC500



#25 AR-1248-5

R.T.: 5.932 min  
Delta R.T.: -0.008 min  
Response: 19203431  
Conc: 496.39 ng/ml