

Data Path : Z:\pestpcbsrv\HPCHEM1\ECD_P\Data\PP011625\
 Data File : PP069160.D
 Signal(s) : Signal #1: ECD1A.ch Signal #2: ECD2B.ch
 Acq On : 16 Jan 2025 22:12
 Operator : YP\AJ
 Sample : Q1092-03 10X
 Misc :
 ALS Vial : 29 Sample Multiplier: 1

Instrument :
 ECD_P
 ClientSampleId :
 429

Integration File signal 1: autoint1.e
 Integration File signal 2: autoint2.e
 Quant Time: Jan 17 05:33:58 2025
 Quant Method : Z:\pestpcbsrv\HPCHEM1\ECD_P\methods\PP010625.M
 Quant Title : GC EXTRACTABLES
 QLast Update : Tue Jan 07 11:05:55 2025
 Response via : Initial Calibration
 Integrator: ChemStation

Volume Inj. : 2 µl
 Signal #1 Phase : ZB-MR1 Signal #2 Phase: ZB-MR2
 Signal #1 Info : 30Mx0.32mmx 0.50µ Signal #2 Info : 30M x 0.32mm x 0.25µm

Compound	RT#1	RT#2	Resp#1	Resp#2	ng/ml	ng/ml

System Monitoring Compounds						
1) SA Tetrachlo...	4.668	3.980	2825085	1723422	2.031	1.766
2) SA Decachlor...	10.515	9.103	2141436	2374373	1.918	1.976

Target Compounds

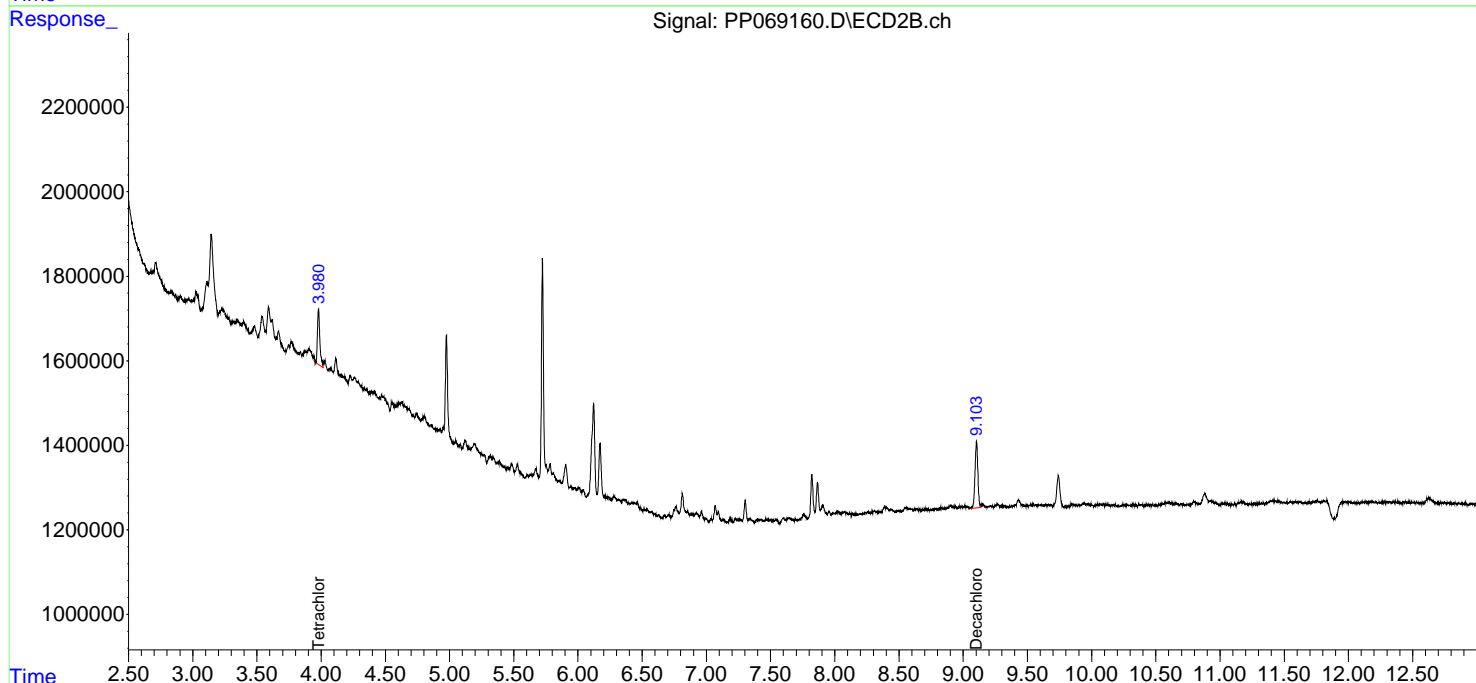
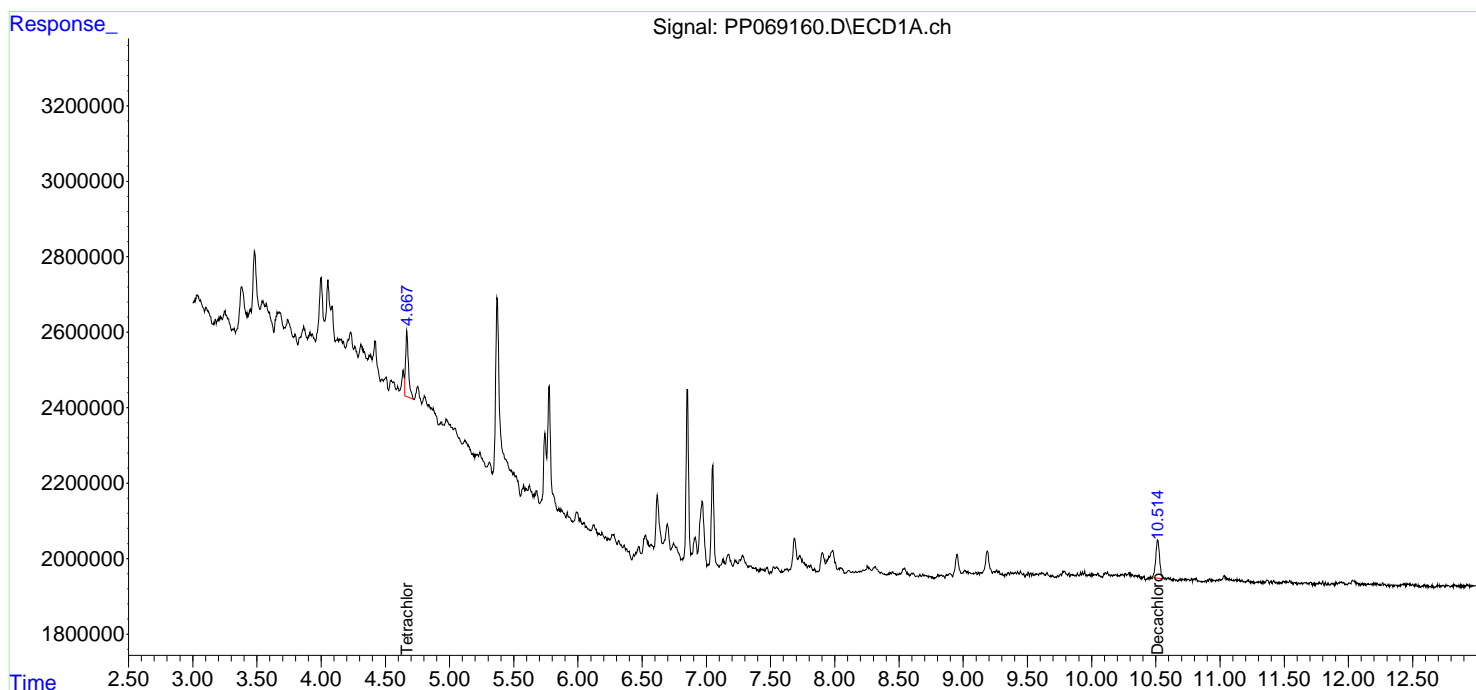
 (f)=RT Delta > 1/2 Window (#)=Amounts differ by > 25% (m)=manual int.

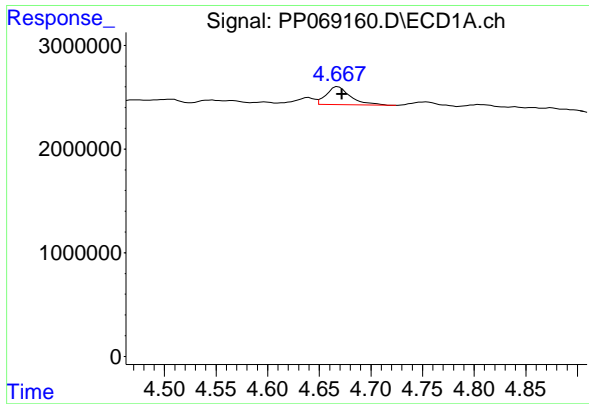
Data Path : Z:\pestpcbsrv\HPCHEM1\ECD_P\Data\PP011625\
 Data File : PP069160.D
 Signal(s) : Signal #1: ECD1A.ch Signal #2: ECD2B.ch
 Acq On : 16 Jan 2025 22:12
 Operator : YP\AJ
 Sample : Q1092-03 10X
 Misc :
 ALS Vial : 29 Sample Multiplier: 1

Instrument :
 ECD_P
 ClientSampleId :
 429

Integration File signal 1: autoint1.e
 Integration File signal 2: autoint2.e
 Quant Time: Jan 17 05:33:58 2025
 Quant Method : Z:\pestpcbsrv\HPCHEM1\ECD_P\methods\PP010625.M
 Quant Title : GC EXTRACTABLES
 QLast Update : Tue Jan 07 11:05:55 2025
 Response via : Initial Calibration
 Integrator: ChemStation

Volume Inj. : 2 µl
 Signal #1 Phase : ZB-MR1 Signal #2 Phase: ZB-MR2
 Signal #1 Info : 30Mx0.32mmx 0.50µm Signal #2 Info : 30M x 0.32mm x 0.25µm

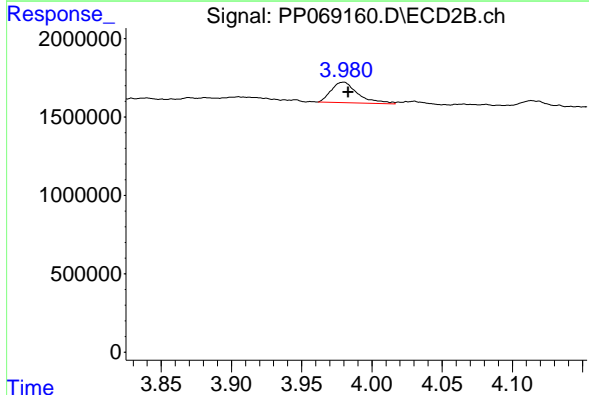




#1 Tetrachloro-m-xylene

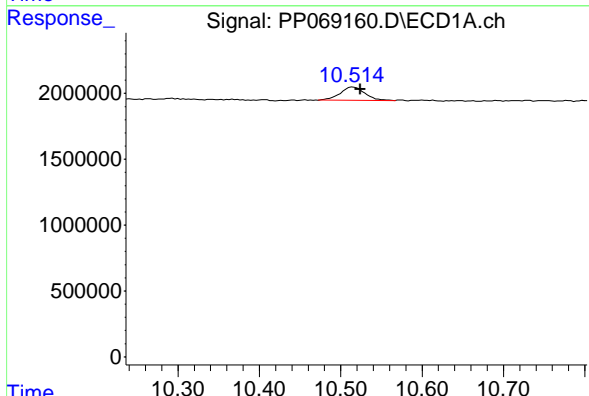
R.T.: 4.668 min
 Delta R.T.: -0.004 min
 Response: 2825085
 Conc: 2.03 ng/ml

Instrument :
 ECD_P
 ClientSampleId :
 429



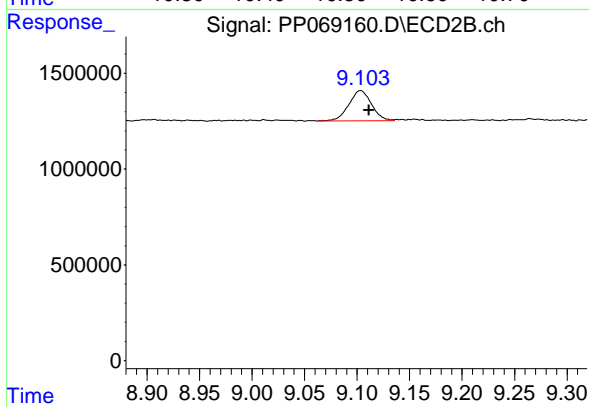
#1 Tetrachloro-m-xylene

R.T.: 3.980 min
 Delta R.T.: -0.003 min
 Response: 1723422
 Conc: 1.77 ng/ml



#2 Decachlorobiphenyl

R.T.: 10.515 min
 Delta R.T.: -0.009 min
 Response: 2141436
 Conc: 1.92 ng/ml



#2 Decachlorobiphenyl

R.T.: 9.103 min
 Delta R.T.: -0.008 min
 Response: 2374373
 Conc: 1.98 ng/ml