

Data Path : Z:\pestpcbsrv\HPCHEM1\ECD_P\Data\PP011719\
 Data File : PP028907.D
 Signal(s) : Signal #1: ECD1A.CH Signal #2: ECD2B.CH
 Acq On : 17 Jan 2019 22:03
 Operator : EI\MA
 Sample : PB116390BS
 Misc : hexane
 ALS Vial : 21 Sample Multiplier: 1

Instrument :
 ECD_P
 ClientSampleId :
 PB116390BS

Integration File signal 1: autoint1.e
 Integration File signal 2: autoint2.e
 Quant Time: Jan 18 00:21:46 2019
 Quant Method : Z:\pestpcbsrv\HPCHEM1\ECD_P\methods\PP011719.M
 Quant Title : 8080.M
 QLast Update : Thu Jan 17 12:26:40 2019
 Response via : Initial Calibration
 Integrator: ChemStation 6890 Scale Mode: Large solvent peaks clipped

Volume Inj. : 2 µl
 Signal #1 Phase : ZB-CLPesticides-1 Signal #2 Phase: ZB-CLPesticides-2
 Signal #1 Info : 30M x 0.32mm x0.5 Signal #2 Info : 30M x 0.32mm x 0.25µm

	Compound	RT#1	RT#2	Resp#1	Resp#2	ng/ml	ng/ml

System Monitoring Compounds							
4) S	2,4-DCAA	12.159	12.269	174.6E6	276.0E6	676.346	605.041
Target Compounds							
1) T	Dalapon	3.371	3.040	461.3E6	636.4E6	718.084	1030.527 #
2) T	3,5-DICHL...	10.569	10.358	332.4E6	363.5E6	619.911	636.864
3) T	4-Nitroph...	11.737	11.414	296.1E6	144.3E6	574.198	611.867
5) T	DICAMBA	12.481	12.580	950.8E6	1037.1E6	614.879	611.985
6) T	MCP P	12.826	12.770	43026291	65520009	89.110	71.029
7) T	MCPA	13.066	13.159	49328160	98933556	64.008	63.081
8) T	DICHLORPROP	13.679	13.695	222.1E6	286.5E6	628.342	641.120
9) T	2,4-D	14.034	14.181	325.8E6	379.5E6	915.905	697.294
10) T	Pentachlo...	14.452	14.799	5175.8E6	4318.0E6	670.375	656.848
11) T	2,4,5-TP ...	15.313	15.365	1881.9E6	1686.1E6	674.019	663.777
12) T	2,4,5-T	15.704	16.011	1657.2E6	1295.8E6	654.960	604.616
13) T	2,4-DB	16.468	16.609	209.6E6	197.2E6	944.501	677.182 #
14) T	DINOSEB	17.960	17.002	1241.0E6	989.5E6	519.919	530.551
15) T	Picloram	17.726	18.388	2439.6E6	2125.9E6	571.691	583.184
16) T	DCPA	18.322	18.265	1794.6E6	1556.2E6	426.461	479.948

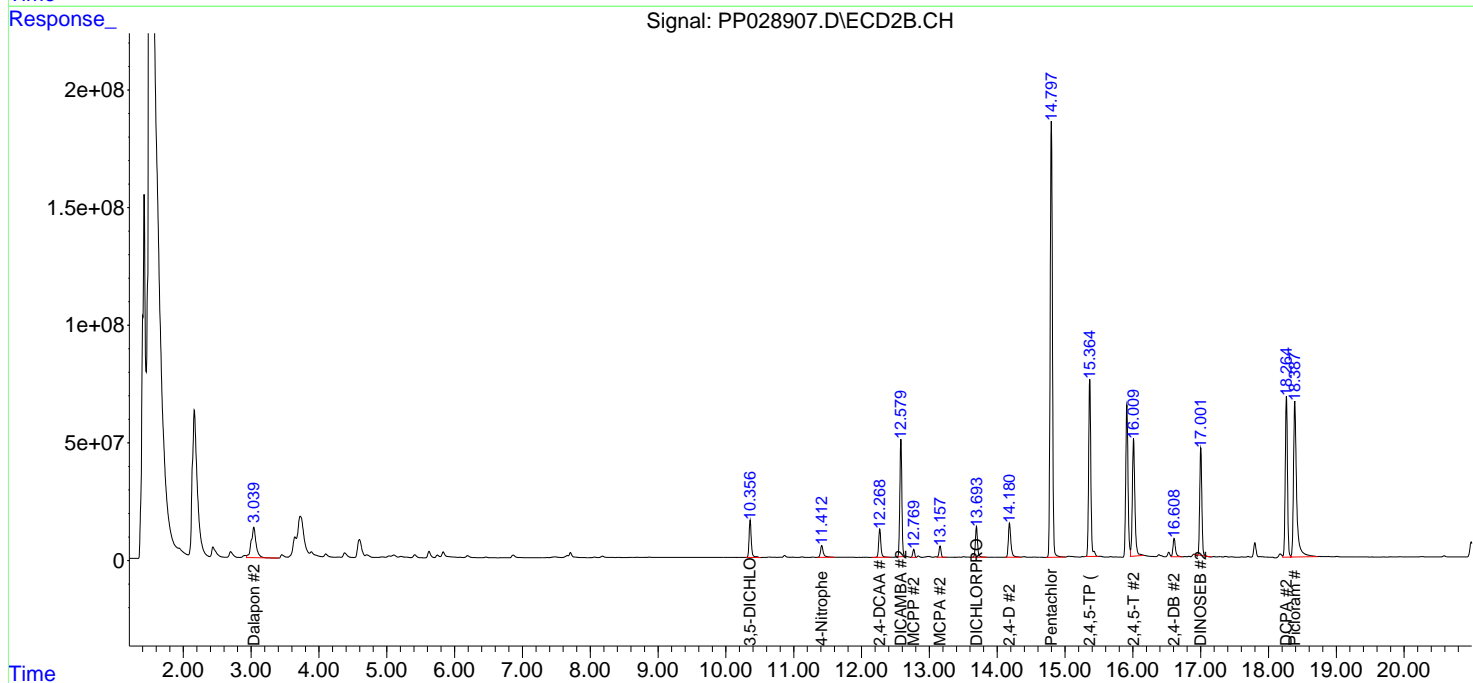
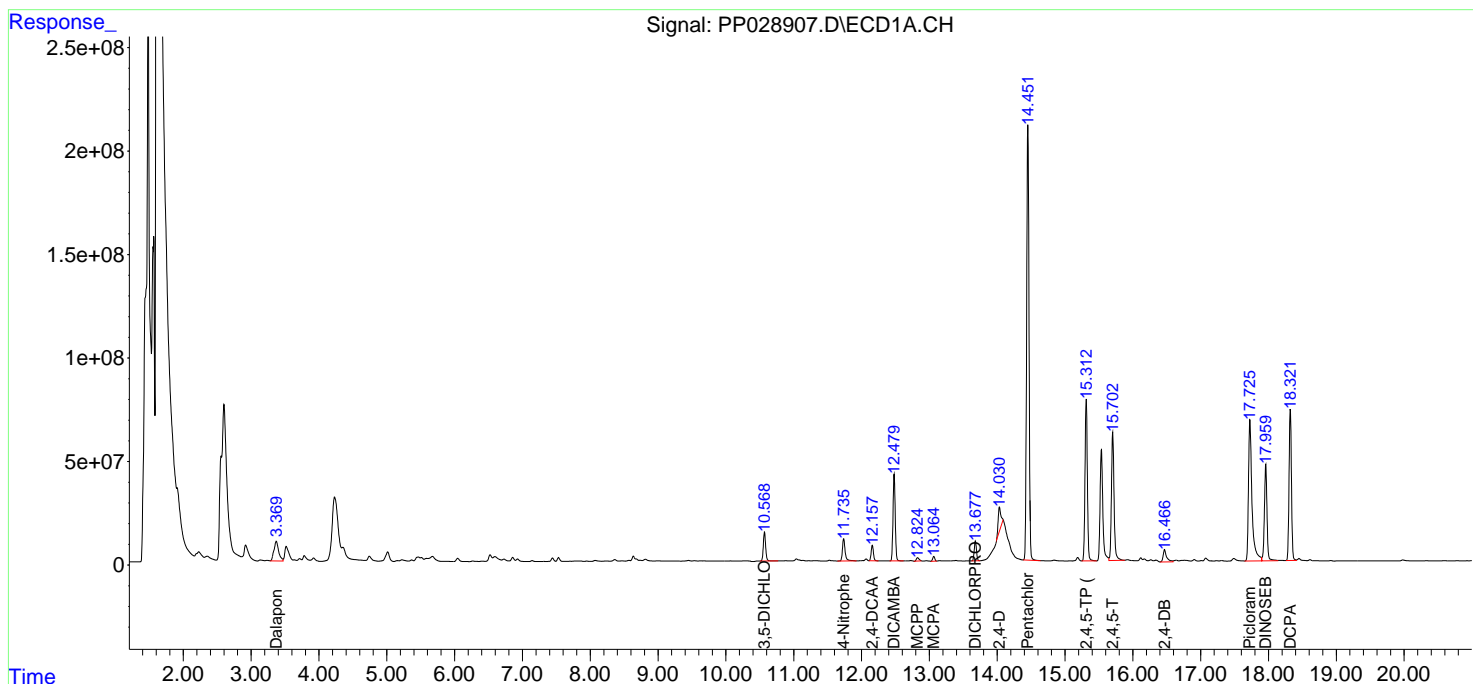
(f)=RT Delta > 1/2 Window (#)=Amounts differ by > 25% (m)=manual int.

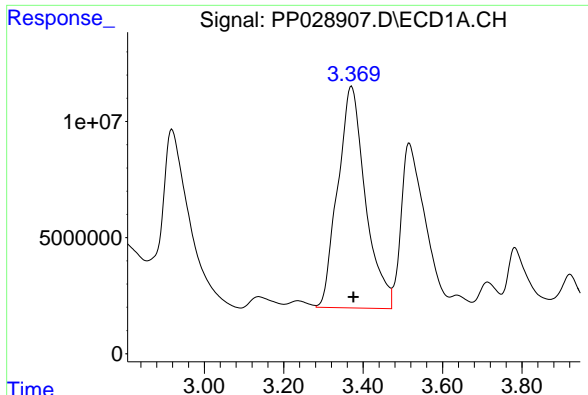
Data Path : Z:\pestpcbsrv\HPCHEM1\ECD_P\Data\PP011719\
 Data File : PP028907.D
 Signal(s) : Signal #1: ECD1A.CH Signal #2: ECD2B.CH
 Acq On : 17 Jan 2019 22:03
 Operator : EI\MA
 Sample : PB116390BS
 Misc : hexane
 ALS Vial : 21 Sample Multiplier: 1

Instrument :
 ECD_P
 ClientSampled :
 PB116390BS

Integration File signal 1: autoint1.e
 Integration File signal 2: autoint2.e
 Quant Time: Jan 18 00:21:46 2019
 Quant Method : Z:\pestpcbsrv\HPCHEM1\ECD_P\methods\PP011719.M
 Quant Title : 8080.M
 QLast Update : Thu Jan 17 12:26:40 2019
 Response via : Initial Calibration
 Integrator: ChemStation 6890 Scale Mode: Large solvent peaks clipped

Volume Inj. : 2 µl
 Signal #1 Phase : ZB-CLPesticides-1 Signal #2 Phase: ZB-CLPesticides-2
 Signal #1 Info : 30M x 0.32mm x0.5 Signal #2 Info : 30M x 0.32mm x 0.25µm

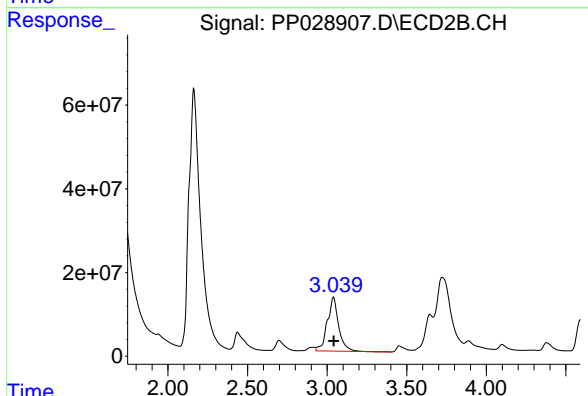




#1 Dalapon

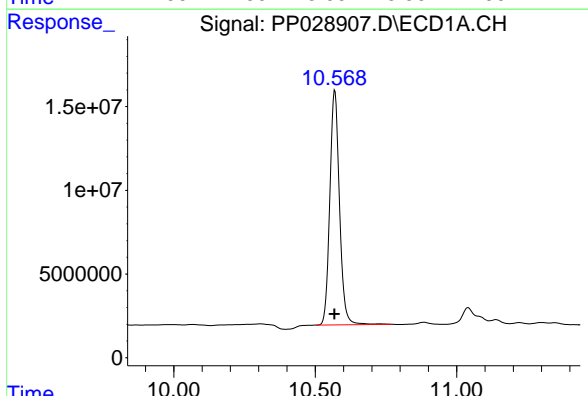
R.T.: 3.371 min
Delta R.T.: -0.004 min
Response: 461273409
Conc: 718.08 ng/ml

Instrument :
ECD_P
ClientSampleId :
PB116390BS



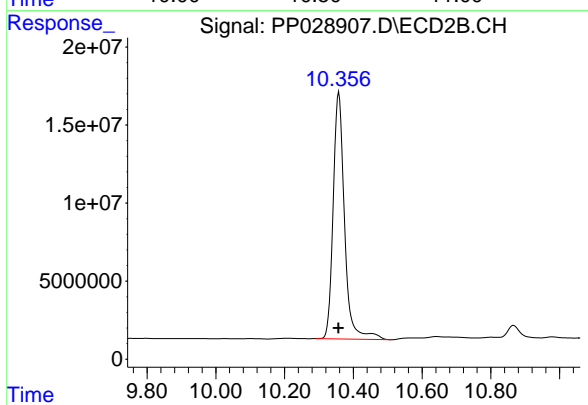
#1 Dalapon

R.T.: 3.040 min
Delta R.T.: -0.001 min
Response: 636388823
Conc: 1030.53 ng/ml



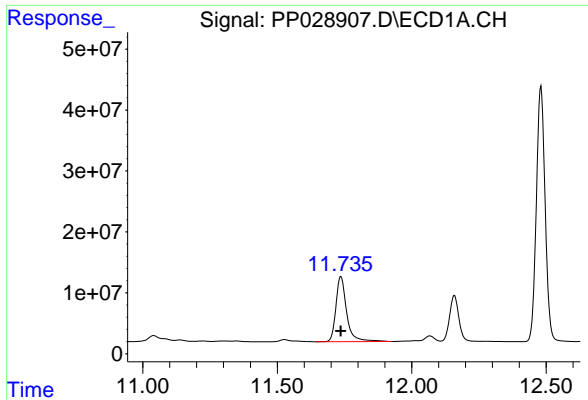
#2 3,5-DICHLOROBENZOIC ACID

R.T.: 10.569 min
Delta R.T.: 0.000 min
Response: 332357288
Conc: 619.91 ng/ml



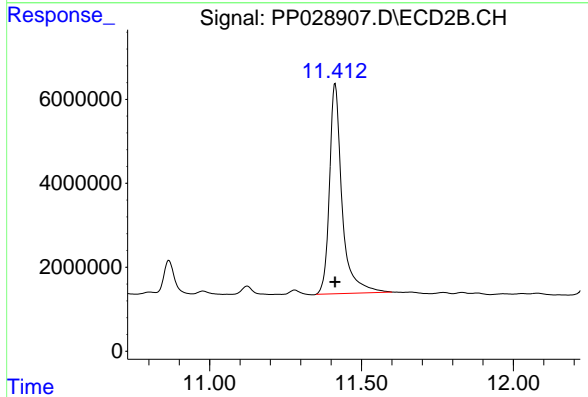
#2 3,5-DICHLOROBENZOIC ACID

R.T.: 10.358 min
Delta R.T.: 0.001 min
Response: 363518874
Conc: 636.86 ng/ml

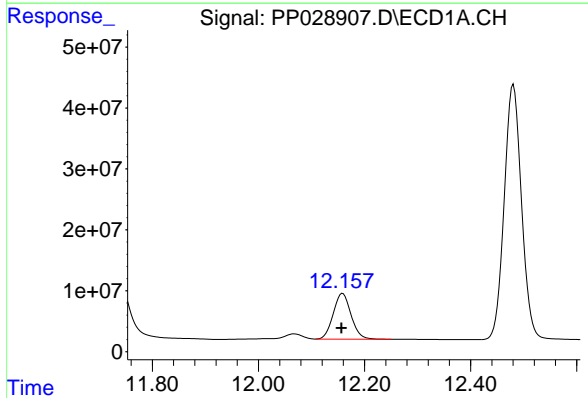


#3 4-Nitrophenol
 R.T.: 11.737 min
 Delta R.T.: 0.001 min
 Response: 296109877
 Conc: 574.20 ng/ml

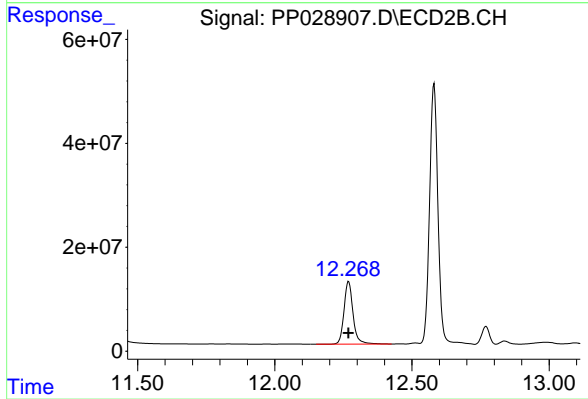
Instrument :
 ECD_P
 ClientSampleId :
 PB116390BS



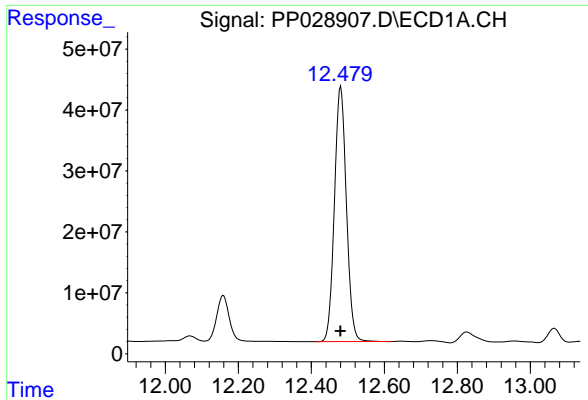
#3 4-Nitrophenol
 R.T.: 11.414 min
 Delta R.T.: 0.000 min
 Response: 144260001
 Conc: 611.87 ng/ml



#4 2,4-DCAA
 R.T.: 12.159 min
 Delta R.T.: 0.002 min
 Response: 174603555
 Conc: 676.35 ng/ml



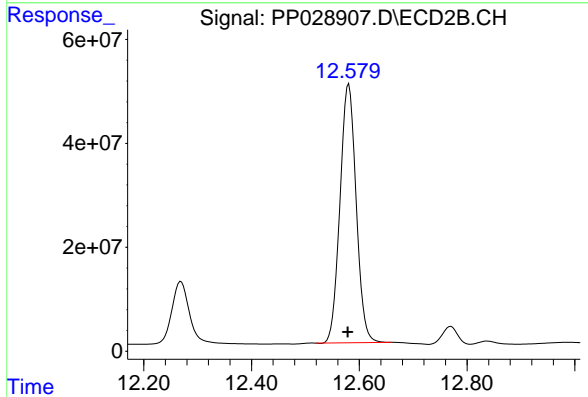
#4 2,4-DCAA
 R.T.: 12.269 min
 Delta R.T.: 0.001 min
 Response: 275981394
 Conc: 605.04 ng/ml



#5 DICAMBA

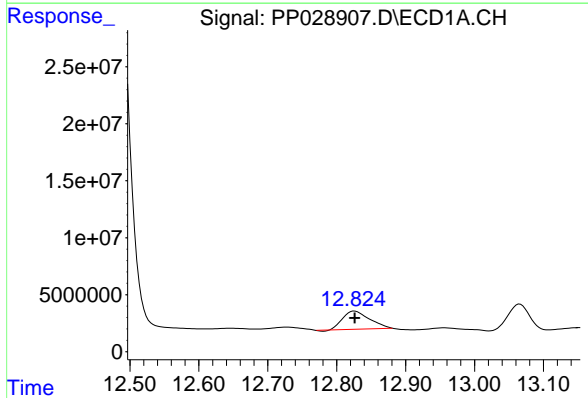
R.T.: 12.481 min
 Delta R.T.: 0.000 min
 Response: 950830118
 Conc: 614.88 ng/ml

Instrument :
 ECD_P
 ClientSampleId :
 PB116390BS



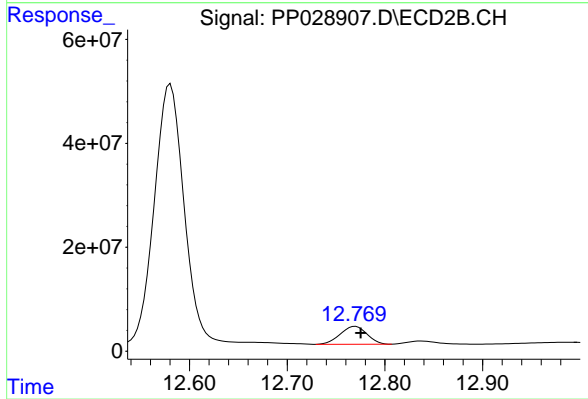
#5 DICAMBA

R.T.: 12.580 min
 Delta R.T.: 0.002 min
 Response: 1037064824
 Conc: 611.99 ng/ml



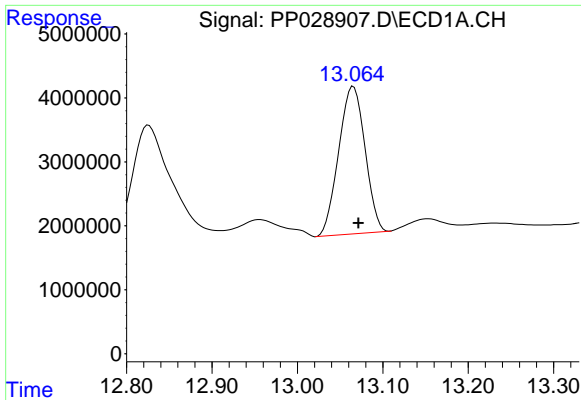
#6 MCP

R.T.: 12.826 min
 Delta R.T.: 0.000 min
 Response: 43026291
 Conc: 89.11 ug/ml



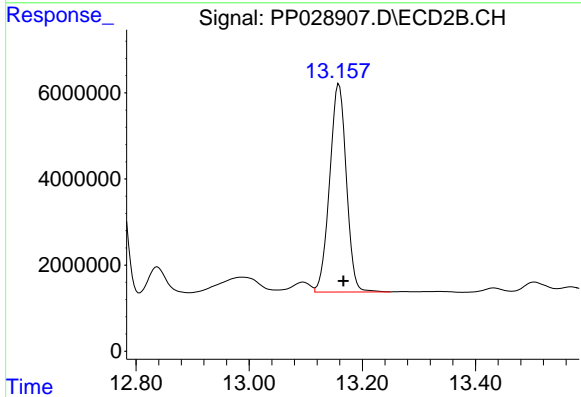
#6 MCP

R.T.: 12.770 min
 Delta R.T.: -0.005 min
 Response: 65520009
 Conc: 71.03 ug/ml

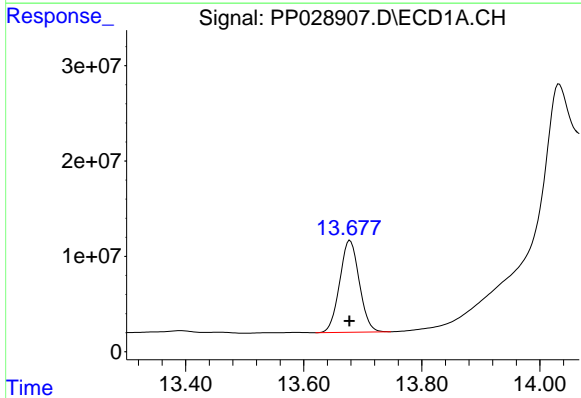


#7 MCPA
 R.T.: 13.066 min
 Delta R.T.: -0.006 min
 Response: 49328160
 Conc: 64.01 ug/ml

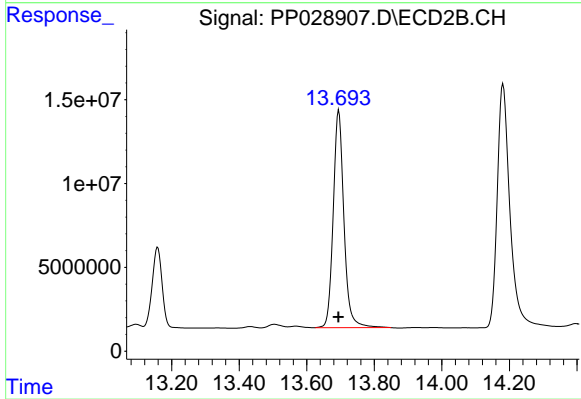
Instrument :
 ECD_P
 ClientSampled :
 PB116390BS



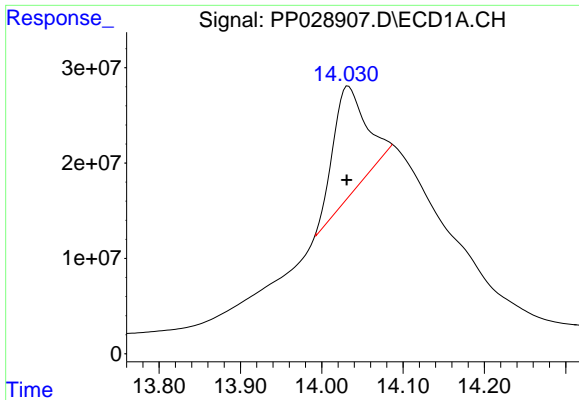
#7 MCPA
 R.T.: 13.159 min
 Delta R.T.: -0.008 min
 Response: 98933556
 Conc: 63.08 ug/ml



#8 DICHLORPROP
 R.T.: 13.679 min
 Delta R.T.: 0.001 min
 Response: 222098870
 Conc: 628.34 ng/ml

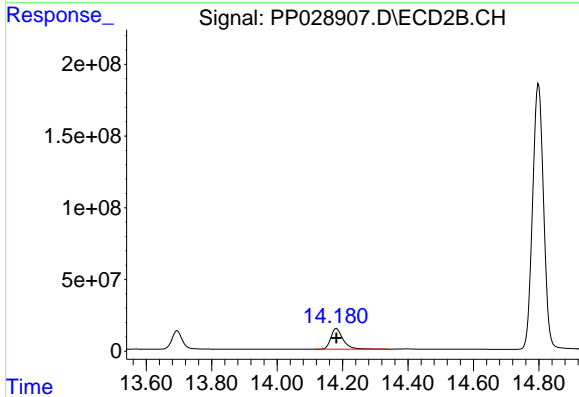


#8 DICHLORPROP
 R.T.: 13.695 min
 Delta R.T.: 0.000 min
 Response: 286519506
 Conc: 641.12 ng/ml

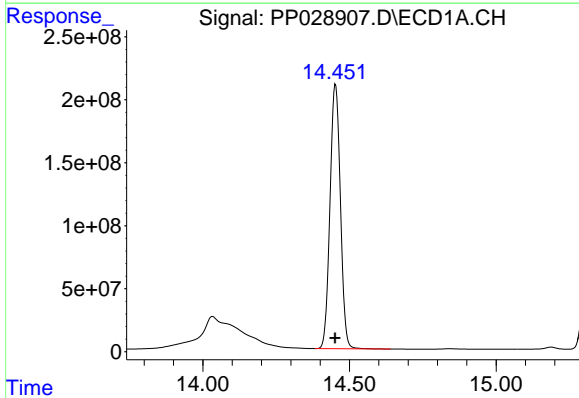


#9 2,4-D
 R.T.: 14.034 min
 Delta R.T.: 0.003 min
 Response: 325788469
 Conc: 915.90 ng/ml

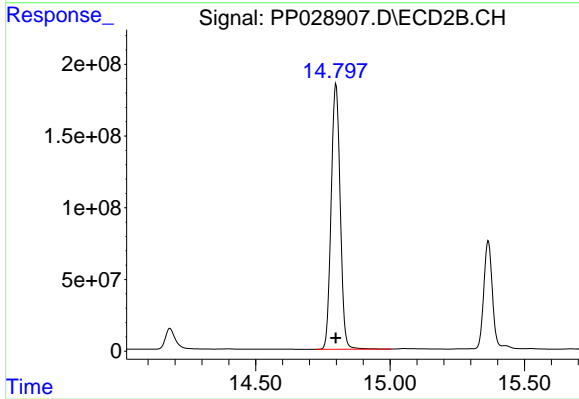
Instrument :
 ECD_P
 ClientSampleId :
 PB116390BS



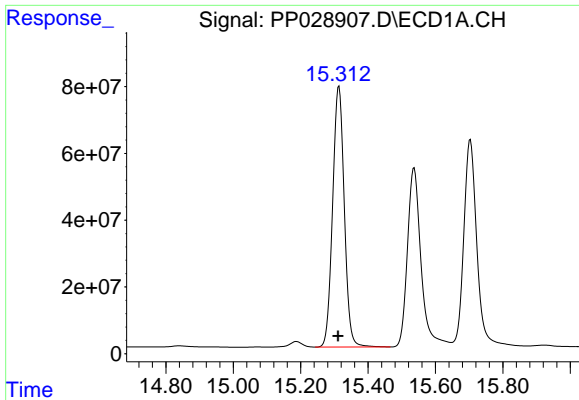
#9 2,4-D
 R.T.: 14.181 min
 Delta R.T.: 0.000 min
 Response: 379460834
 Conc: 697.29 ng/ml



#10 Pentachlorophenol
 R.T.: 14.452 min
 Delta R.T.: 0.001 min
 Response: 5175808384
 Conc: 670.37 ng/ml



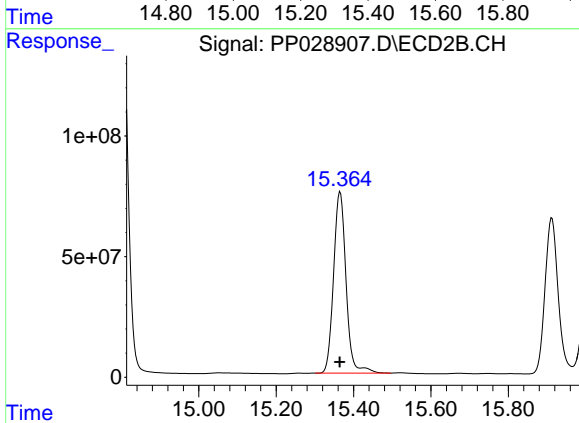
#10 Pentachlorophenol
 R.T.: 14.799 min
 Delta R.T.: 0.001 min
 Response: 4317985432
 Conc: 656.85 ng/ml



#11 2,4,5-TP (SILVEX)

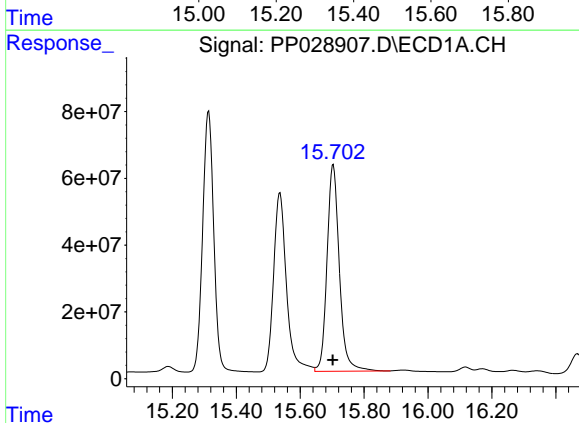
R.T.: 15.313 min
 Delta R.T.: 0.002 min
 Response: 1881909188
 Conc: 674.02 ng/ml

Instrument :
 ECD_P
 ClientSampleId :
 PB116390BS



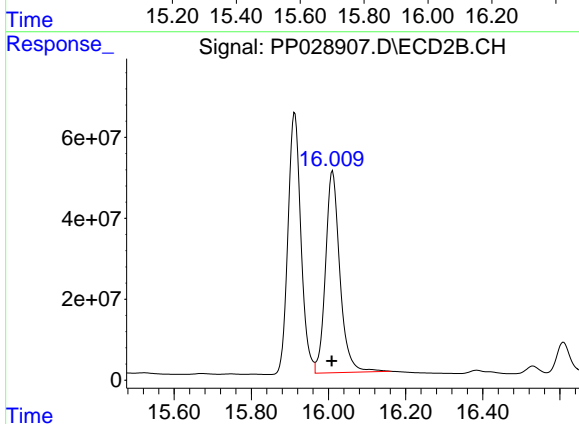
#11 2,4,5-TP (SILVEX)

R.T.: 15.365 min
 Delta R.T.: 0.001 min
 Response: 1686052112
 Conc: 663.78 ng/ml



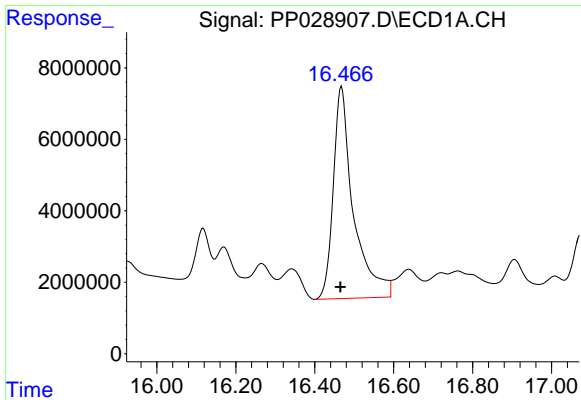
#12 2,4,5-T

R.T.: 15.704 min
 Delta R.T.: 0.002 min
 Response: 1657222640
 Conc: 654.96 ng/ml



#12 2,4,5-T

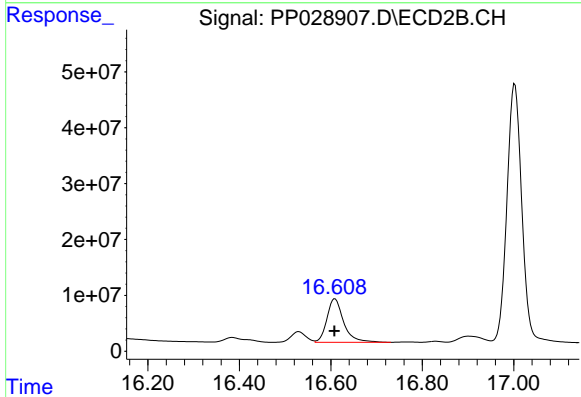
R.T.: 16.011 min
 Delta R.T.: 0.003 min
 Response: 1295829315
 Conc: 604.62 ng/ml



#13 2,4-DB

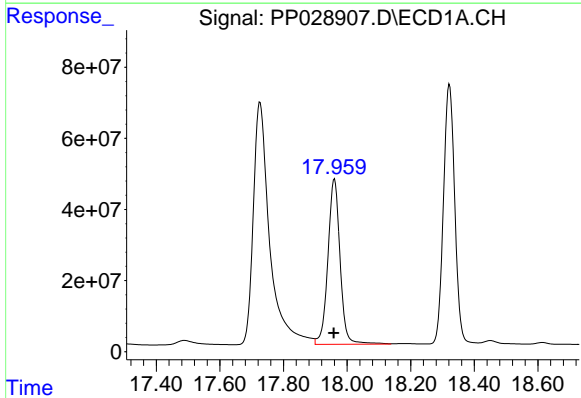
R.T.: 16.468 min
 Delta R.T.: 0.002 min
 Response: 209636191
 Conc: 944.50 ng/ml

Instrument :
 ECD_P
 ClientSampleId :
 PB116390BS



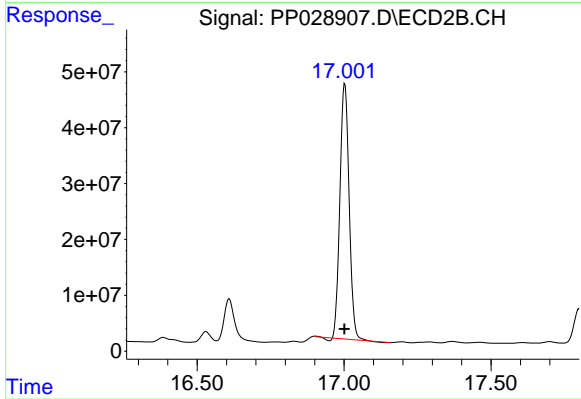
#13 2,4-DB

R.T.: 16.609 min
 Delta R.T.: 0.001 min
 Response: 197238798
 Conc: 677.18 ng/ml



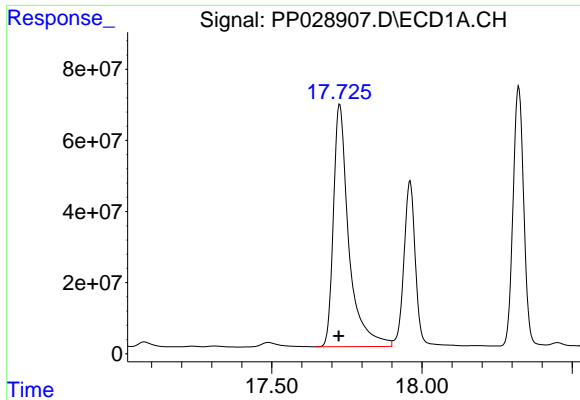
#14 DINOSEB

R.T.: 17.960 min
 Delta R.T.: 0.002 min
 Response: 1241048011
 Conc: 519.92 ng/ml



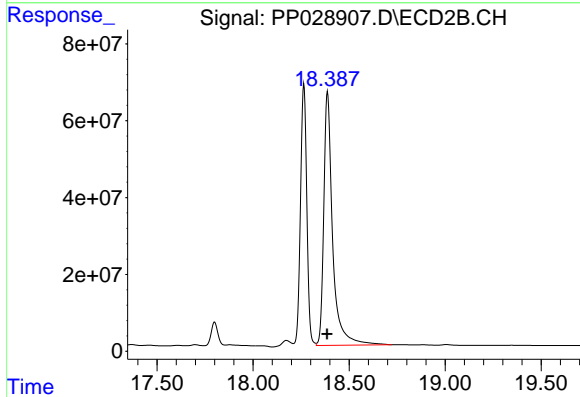
#14 DINOSEB

R.T.: 17.002 min
 Delta R.T.: 0.001 min
 Response: 989503331
 Conc: 530.55 ng/ml

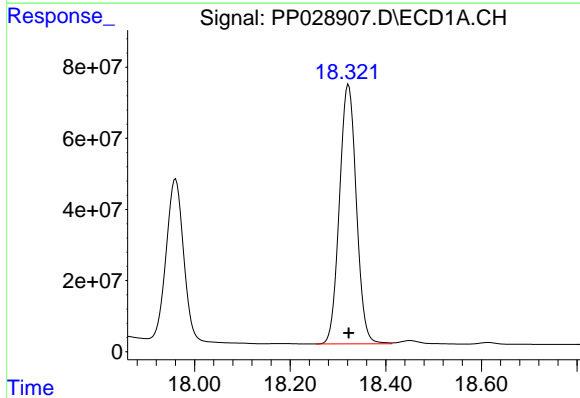


#15 Picloram
 R.T.: 17.726 min
 Delta R.T.: 0.004 min
 Response: 2439577951
 Conc: 571.69 ng/ml

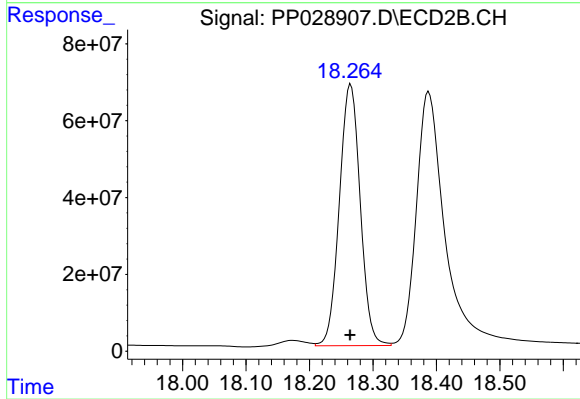
Instrument :
 ECD_P
 ClientSampleId :
 PB116390BS



#15 Picloram
 R.T.: 18.388 min
 Delta R.T.: 0.003 min
 Response: 2125858075
 Conc: 583.18 ng/ml



#16 DCPA
 R.T.: 18.322 min
 Delta R.T.: 0.000 min
 Response: 1794553959
 Conc: 426.46 ng/ml



#16 DCPA
 R.T.: 18.265 min
 Delta R.T.: 0.001 min
 Response: 1556243298
 Conc: 479.95 ng/ml