

Data Path : Z:\pestpcbsrv\HPCHEM1\ECD_P\Data\PP011719\
 Data File : PP028889.D
 Signal(s) : Signal #1: ECD1A.CH Signal #2: ECD2B.CH
 Acq On : 17 Jan 2019 13:46
 Operator : EI\MA
 Sample : K1147-24
 Misc : hexane
 ALS Vial : 4 Sample Multiplier: 1

Instrument :
 ECD_P
ClientSampled :
 TP-8

Manual Integrations
APPROVED
 Sohil
 1/18/2019 9:17:20 AM

Integration File signal 1: autoint1.e
 Integration File signal 2: autoint2.e
 Quant Time: Jan 18 00:14:43 2019
 Quant Method : Z:\pestpcbsrv\HPCHEM1\ECD_P\methods\PP011719.M
 Quant Title : 8080.M
 QLast Update : Thu Jan 17 12:26:40 2019
 Response via : Initial Calibration
 Integrator: ChemStation 6890 Scale Mode: Large solvent peaks clipped

Volume Inj. : 2 µl
 Signal #1 Phase : ZB-CLPesticides-1 Signal #2 Phase: ZB-CLPesticides-2
 Signal #1 Info : 30M x 0.32mm x0.5 Signal #2 Info : 30M x 0.32mm x 0.25µm

Compound	RT#1	RT#2	Resp#1	Resp#2	ng/ml	ng/ml

System Monitoring Compounds						
4) S 2,4-DCAA	12.163	12.271	79725582	104.0E6	308.826m	228.087 #

Target Compounds

(f)=RT Delta > 1/2 Window (#)=Amounts differ by > 25% (m)=manual int.

Data Path : Z:\pestpcbsrv\HPCHEM1\ECD_P\Data\PP011719\
 Data File : PP028889.D
 Signal(s) : Signal #1: ECD1A.CH Signal #2: ECD2B.CH
 Acq On : 17 Jan 2019 13:46
 Operator : EI\MA
 Sample : K1147-24
 Misc : hexane
 ALS Vial : 4 Sample Multiplier: 1

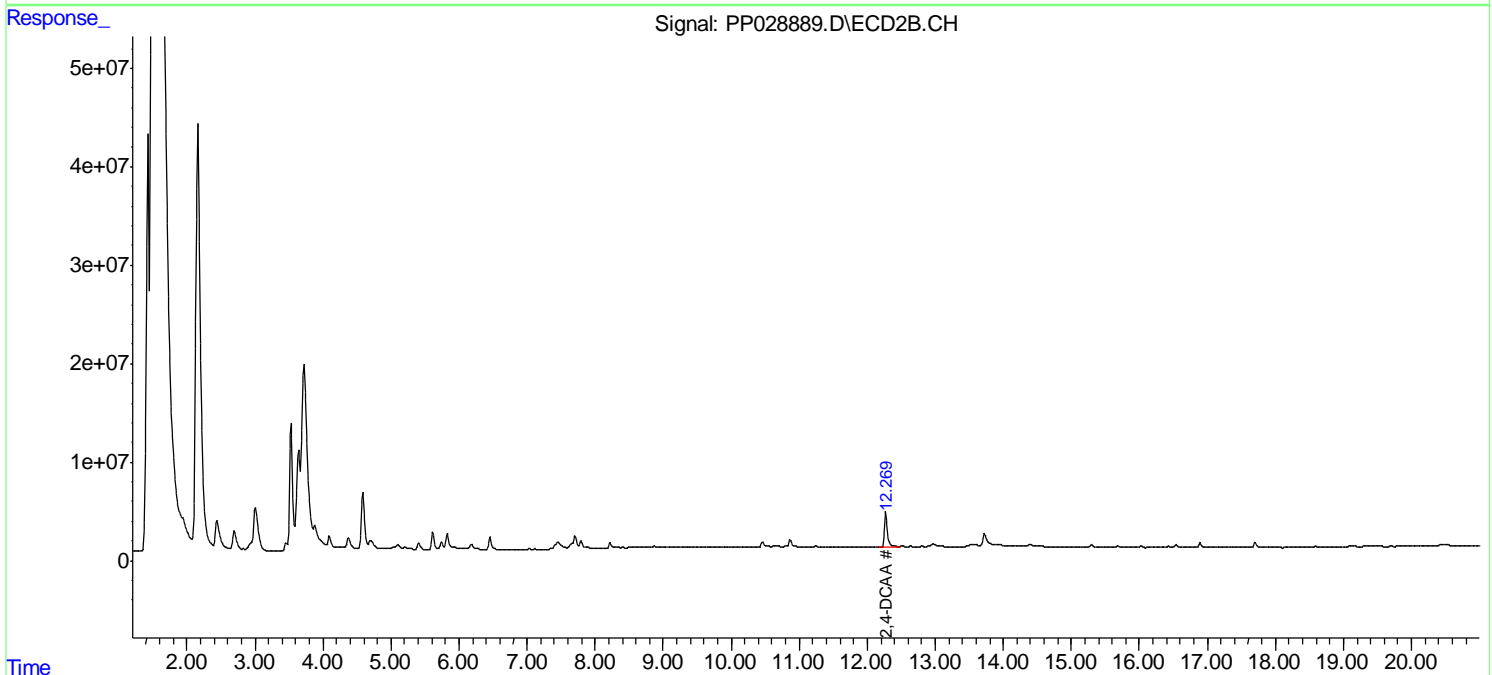
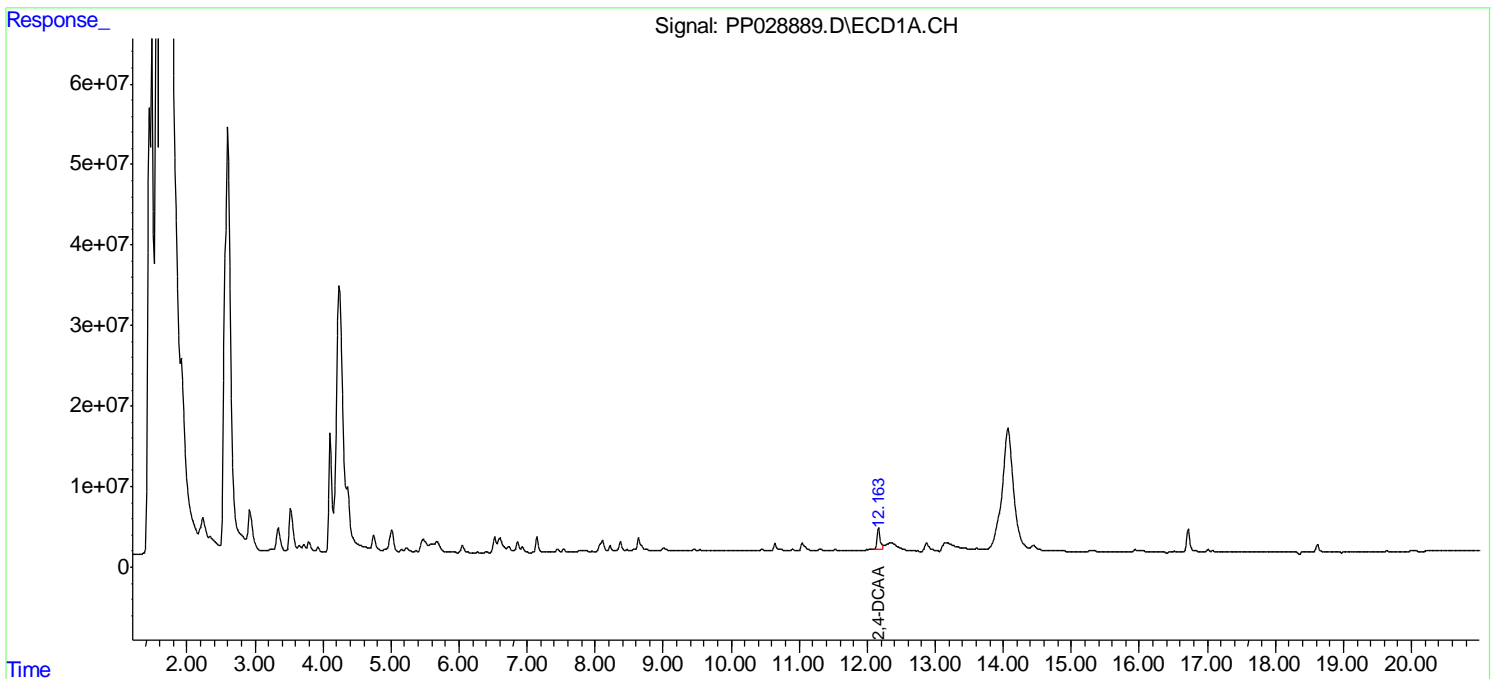
Instrument :
 ECD_P
 Client Sampled :
 TP-8

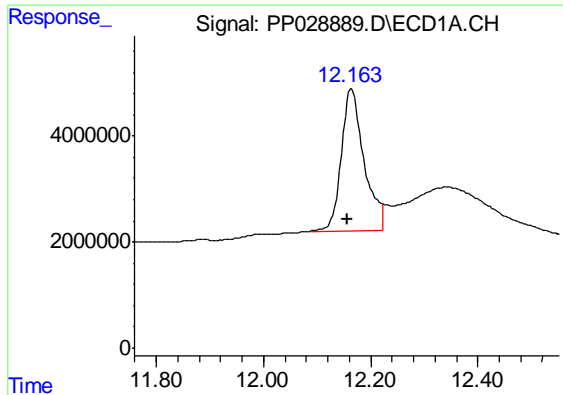
Manual Integrations
 APPROVED

Sohil
 1/18/2019 9:17:20 AM

Integration File signal 1: autoint1.e
 Integration File signal 2: autoint2.e
 Quant Time: Jan 18 00:14:43 2019
 Quant Method : Z:\pestpcbsrv\HPCHEM1\ECD_P\methods\PP011719.M
 Quant Title : 8080.M
 QLast Update : Thu Jan 17 12:26:40 2019
 Response via : Initial Calibration
 Integrator: ChemStation 6890 Scale Mode: Large solvent peaks clipped

Volume Inj. : 2 µl
 Signal #1 Phase : ZB-CLPesticides-1 Signal #2 Phase: ZB-CLPesticides-2
 Signal #1 Info : 30M x 0.32mm x0.5 Signal #2 Info : 30M x 0.32mm x 0.25µm





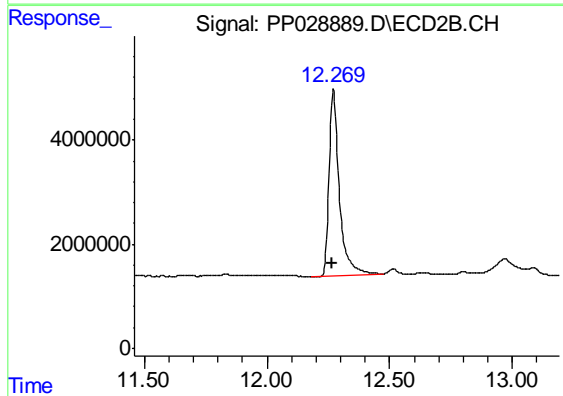
#4 2,4-DCAA

R.T.: 12.163 min
Delta R.T.: 0.006 min
Response: 79725582
Conc: 308.83 ng/ml m

Instrument :
ECD_P
ClientSampled :
TP-8

Manual Integrations
APPROVED

Sohil
1/18/2019 9:17:20 AM



#4 2,4-DCAA

R.T.: 12.271 min
Delta R.T.: 0.003 min
Response: 104039076
Conc: 228.09 ng/ml