

Data Path : Z:\pestpcbsrv\HPCHEM1\ECD\_P\Data\PP011722\  
 Data File : PP043004.D  
 Signal(s) : Signal #1: ECD1A.CH Signal #2: ECD2B.CH  
 Acq On : 17 Jan 2022 21:27  
 Operator : AJ\MA  
 Sample : PB142064BS  
 Misc :  
 ALS Vial : 28 Sample Multiplier: 1

Instrument :  
 ECD\_P  
 ClientSampleId :  
 PB142064BS

Integration File signal 1: autoint1.e  
 Integration File signal 2: autoint2.e  
 Quant Time: Jan 18 02:59:35 2022  
 Quant Method : Z:\pestpcbsrv\HPCHEM1\ECD\_P\methods\PP011222.M  
 Quant Title : GC EXTRACTABLES  
 QLast Update : Thu Jan 13 19:45:07 2022  
 Response via : Initial Calibration  
 Integrator: ChemStation 6890 Scale Mode: Small noise peaks clipped

Volume Inj. : 2 µl  
 Signal #1 Phase : ZB-MR2 Signal #2 Phase: ZB-MR2  
 Signal #1 Info : 30Mx0.32mmx 0.50µ Signal #2 Info : 30M x 0.32mm x 0.25µm

Compound	RT#1	RT#2	Resp#1	Resp#2	ng/ml	ng/ml
-----						
System Monitoring Compounds						
1) SA Tetrachlo...	4.878	4.044	490443	531246	20.728	21.270
2) SA Decachlor...	10.816	9.382	372312	489538	25.469	25.096
Target Compounds						
3) L1 AR-1016-1	6.182	5.309	318617	474572	429.184	463.556
4) L1 AR-1016-2	6.205	5.329	479316	653580	416.820	457.641
5) L1 AR-1016-3	6.271	5.523	306492	363905	430.592	454.984
6) L1 AR-1016-4	6.376	5.574	245145	279844	404.288	450.267
7) L1 AR-1016-5	6.691	5.805	225218	351378	393.419	471.248
31) L7 AR-1260-1	7.866	6.906	418462	644748	438.840	498.809
32) L7 AR-1260-2	8.130	7.103	459025	749984	444.451	480.158
33) L7 AR-1260-3	8.497	7.260	301234	700725	399.254	484.837
34) L7 AR-1260-4	8.725	7.745	368182	498337	432.245	439.860
35) L7 AR-1260-5	9.043	7.993	662659	1098011	402.748	437.797
-----						

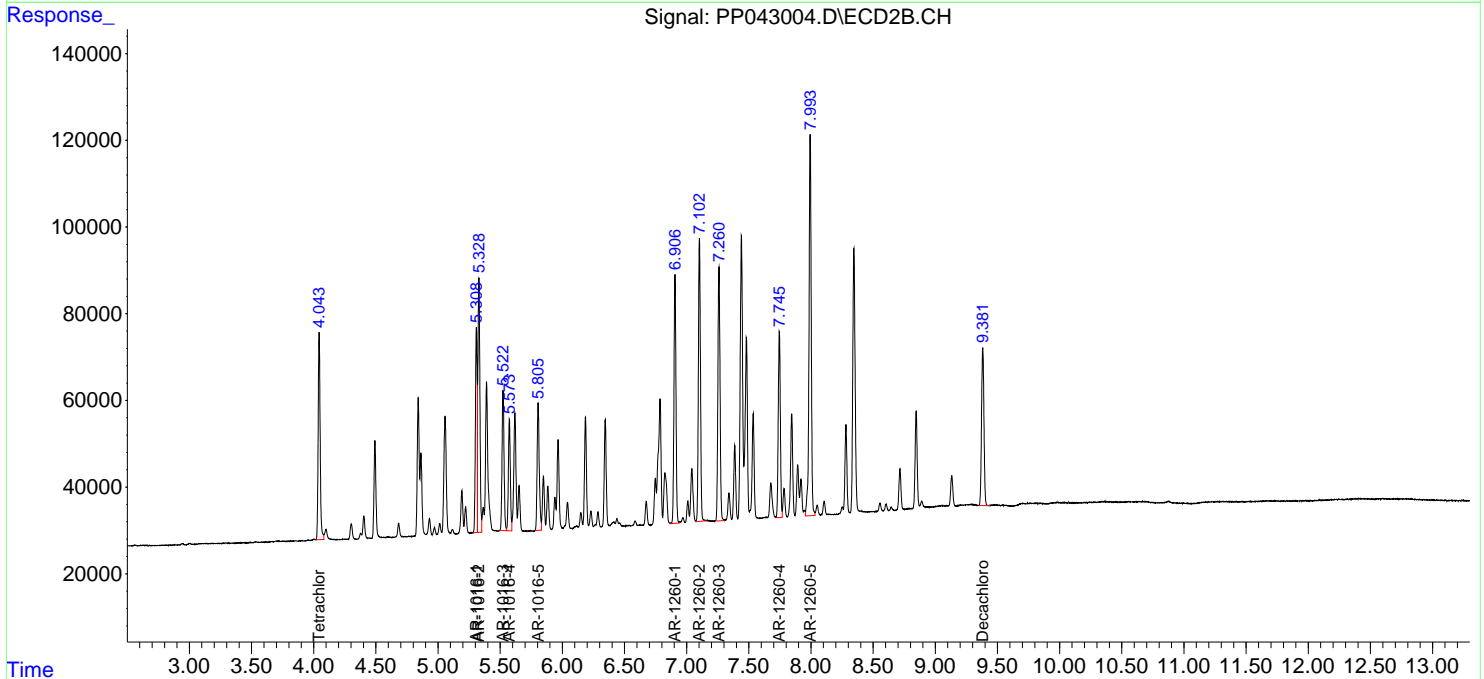
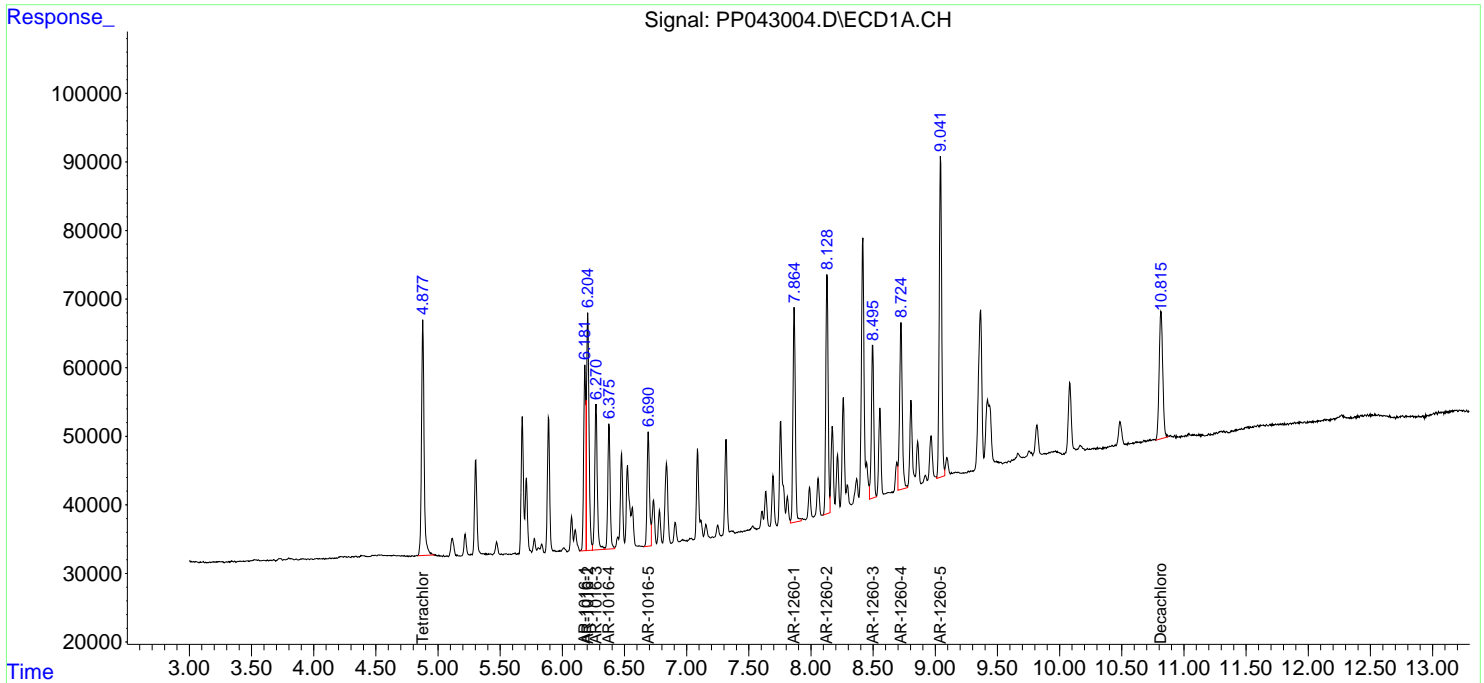
(f)=RT Delta > 1/2 Window (#)=Amounts differ by > 25% (m)=manual int.

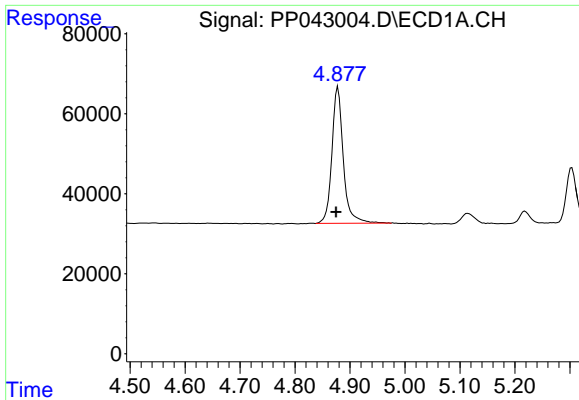
Data Path : Z:\pestpcbsrv\HPCHEM1\ECD\_P\Data\PP011722\  
 Data File : PP043004.D  
 Signal(s) : Signal #1: ECD1A.CH Signal #2: ECD2B.CH  
 Acq On : 17 Jan 2022 21:27  
 Operator : AJ\MA  
 Sample : PB142064BS  
 Misc :  
 ALS Vial : 28 Sample Multiplier: 1

Instrument :  
 ECD\_P  
 ClientSampleId :  
 PB142064BS

Integration File signal 1: autoint1.e  
 Integration File signal 2: autoint2.e  
 Quant Time: Jan 18 02:59:35 2022  
 Quant Method : Z:\pestpcbsrv\HPCHEM1\ECD\_P\methods\PP011222.M  
 Quant Title : GC EXTRACTABLES  
 QLast Update : Thu Jan 13 19:45:07 2022  
 Response via : Initial Calibration  
 Integrator: ChemStation 6890 Scale Mode: Small noise peaks clipped

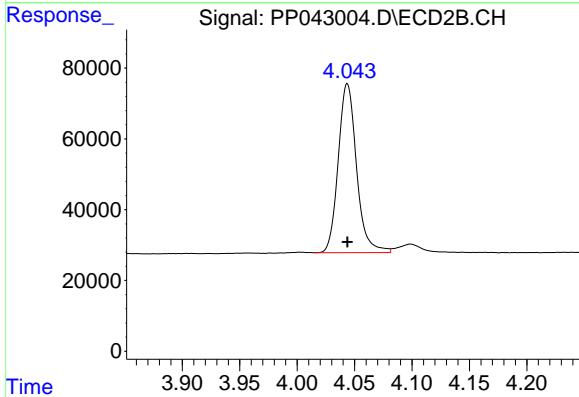
Volume Inj. : 2 µl  
 Signal #1 Phase : ZB-MR1 Signal #2 Phase: ZB-MR2  
 Signal #1 Info : 30Mx0.32mmx 0.50µ Signal #2 Info : 30M x 0.32mm x 0.25µm



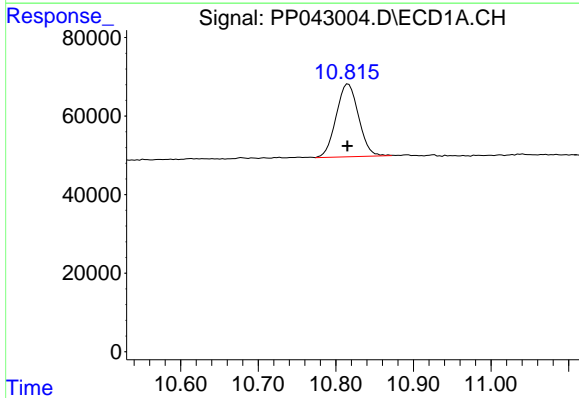


#1 Tetrachloro-m-xylene  
 R.T.: 4.878 min  
 Delta R.T.: 0.003 min  
 Response: 490443  
 Conc: 20.73 ng/ml

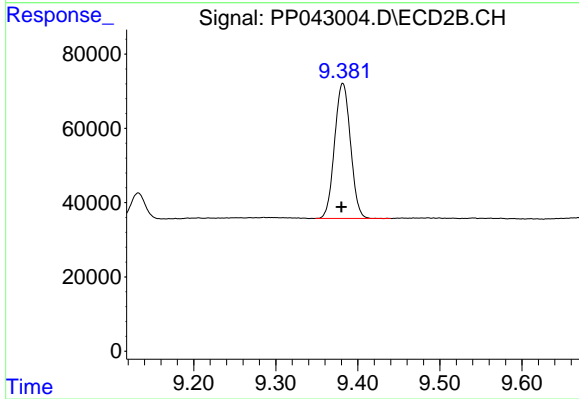
Instrument :  
 ECD\_P  
 ClientSampleId :  
 PB142064BS



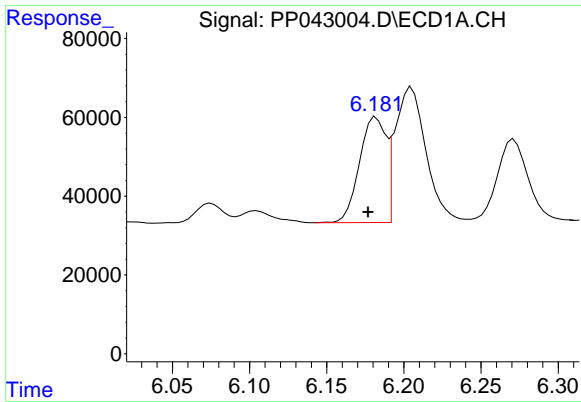
#1 Tetrachloro-m-xylene  
 R.T.: 4.044 min  
 Delta R.T.: 0.000 min  
 Response: 531246  
 Conc: 21.27 ng/ml



#2 Decachlorobiphenyl  
 R.T.: 10.816 min  
 Delta R.T.: 0.001 min  
 Response: 372312  
 Conc: 25.47 ng/ml



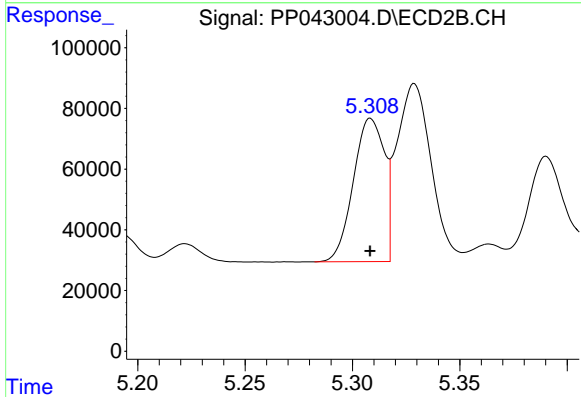
#2 Decachlorobiphenyl  
 R.T.: 9.382 min  
 Delta R.T.: 0.002 min  
 Response: 489538  
 Conc: 25.10 ng/ml



#3 AR-1016-1

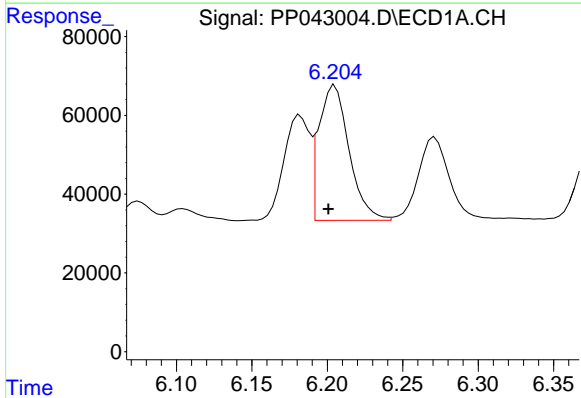
R.T.: 6.182 min  
 Delta R.T.: 0.005 min  
 Response: 318617  
 Conc: 429.18 ng/ml

Instrument :  
 ECD\_P  
 ClientSampleId :  
 PB142064BS



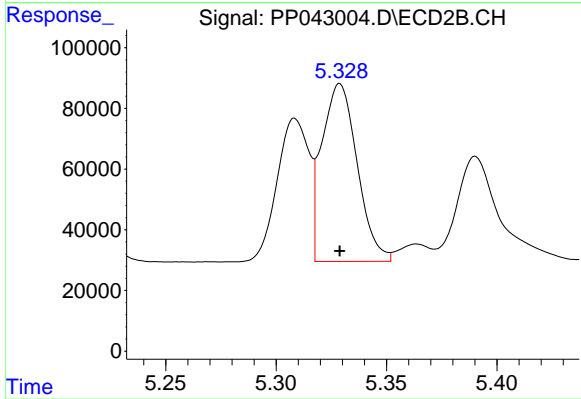
#3 AR-1016-1

R.T.: 5.309 min  
 Delta R.T.: 0.000 min  
 Response: 474572  
 Conc: 463.56 ng/ml



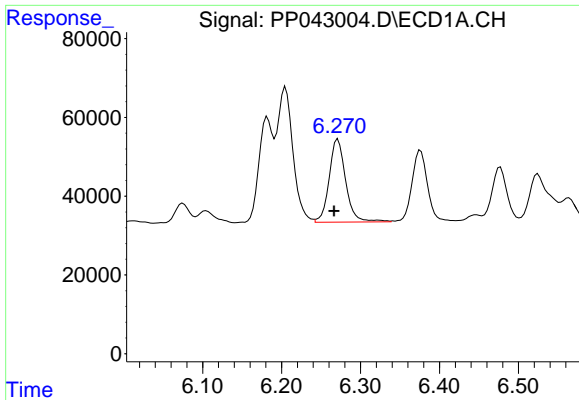
#4 AR-1016-2

R.T.: 6.205 min  
 Delta R.T.: 0.004 min  
 Response: 479316  
 Conc: 416.82 ng/ml



#4 AR-1016-2

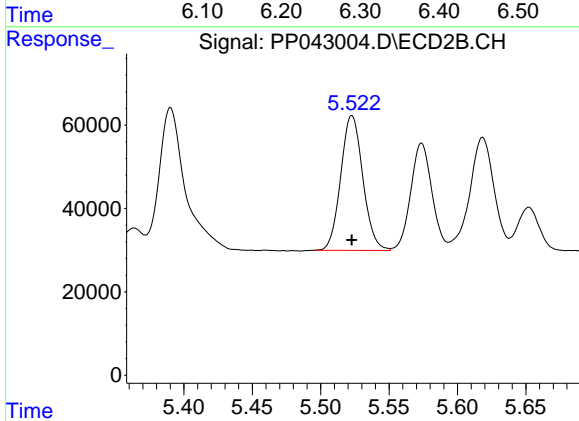
R.T.: 5.329 min  
 Delta R.T.: 0.000 min  
 Response: 653580  
 Conc: 457.64 ng/ml



#5 AR-1016-3

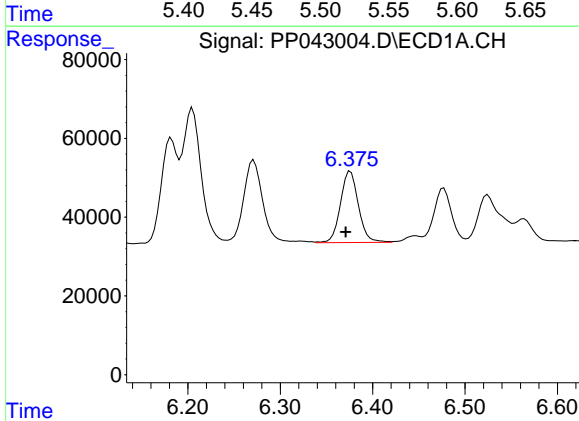
R.T.: 6.271 min  
 Delta R.T.: 0.005 min  
 Response: 306492  
 Conc: 430.59 ng/ml

Instrument :  
 ECD\_P  
 ClientSampleId :  
 PB142064BS



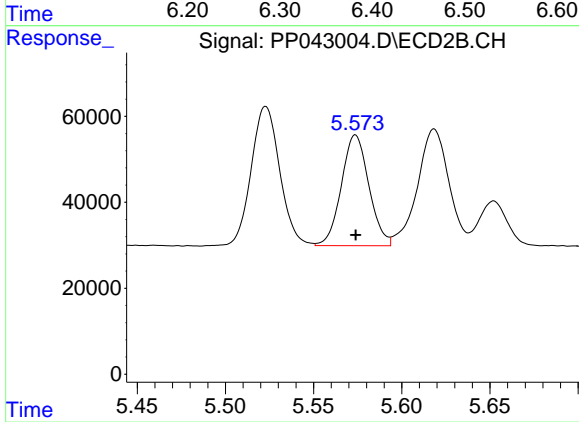
#5 AR-1016-3

R.T.: 5.523 min  
 Delta R.T.: 0.000 min  
 Response: 363905  
 Conc: 454.98 ng/ml



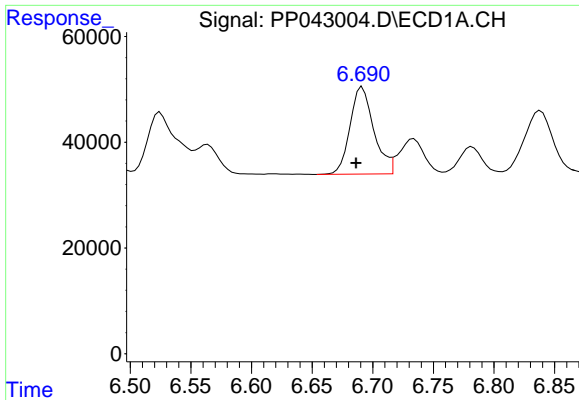
#6 AR-1016-4

R.T.: 6.376 min  
 Delta R.T.: 0.005 min  
 Response: 245145  
 Conc: 404.29 ng/ml



#6 AR-1016-4

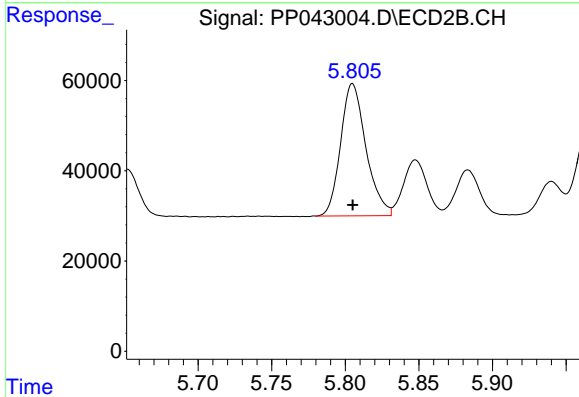
R.T.: 5.574 min  
 Delta R.T.: 0.000 min  
 Response: 279844  
 Conc: 450.27 ng/ml



#7 AR-1016-5

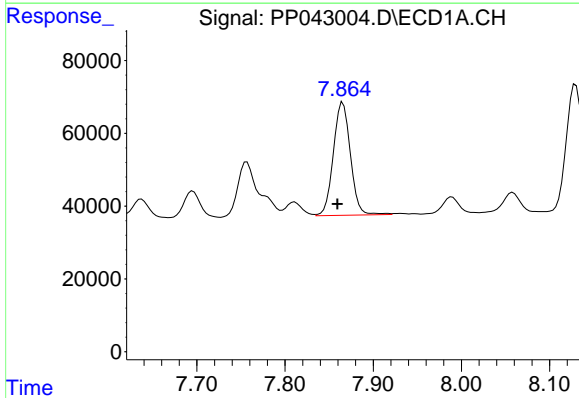
R.T.: 6.691 min  
 Delta R.T.: 0.005 min  
 Response: 225218  
 Conc: 393.42 ng/ml

Instrument :  
 ECD\_P  
 ClientSampleId :  
 PB142064BS



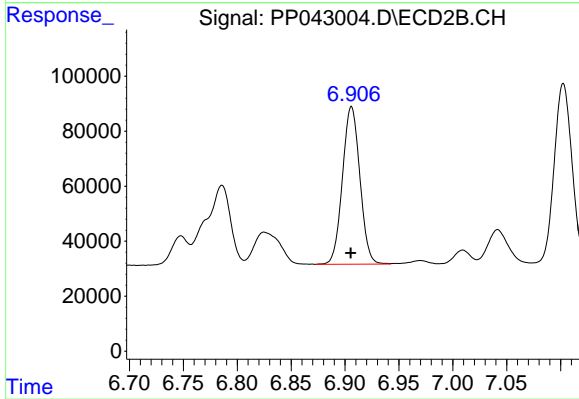
#7 AR-1016-5

R.T.: 5.805 min  
 Delta R.T.: 0.000 min  
 Response: 351378  
 Conc: 471.25 ng/ml



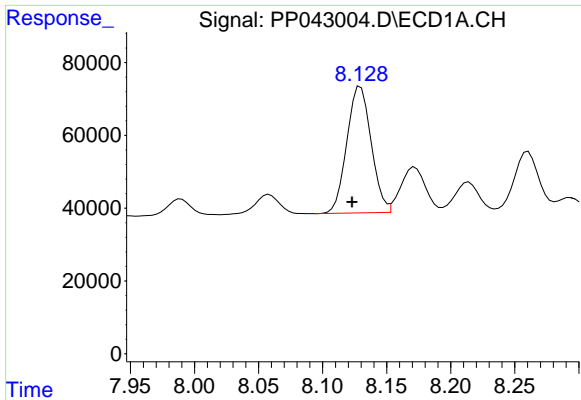
#31 AR-1260-1

R.T.: 7.866 min  
 Delta R.T.: 0.006 min  
 Response: 418462  
 Conc: 438.84 ng/ml



#31 AR-1260-1

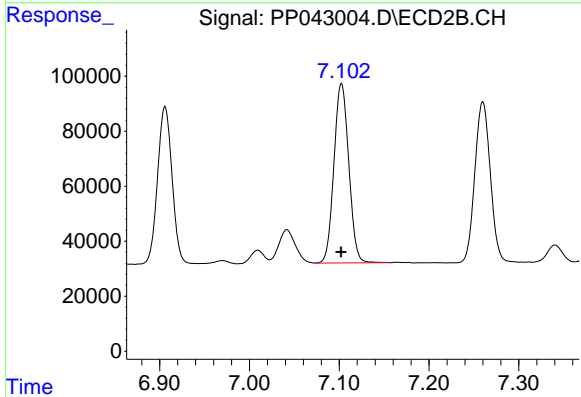
R.T.: 6.906 min  
 Delta R.T.: 0.000 min  
 Response: 644748  
 Conc: 498.81 ng/ml



#32 AR-1260-2

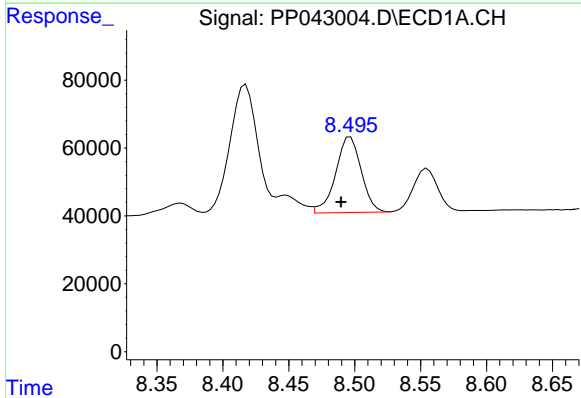
R.T.: 8.130 min  
 Delta R.T.: 0.007 min  
 Response: 459025  
 Conc: 444.45 ng/ml

Instrument :  
 ECD\_P  
 ClientSampleId :  
 PB142064BS



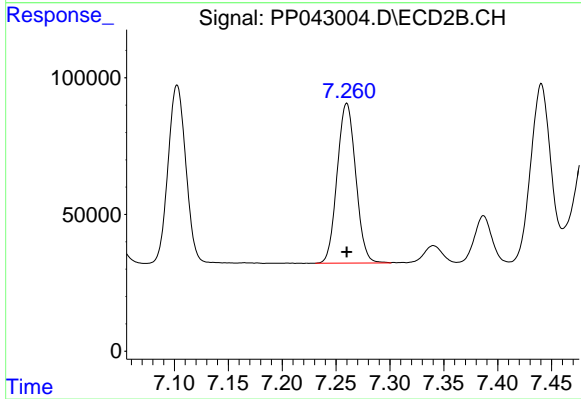
#32 AR-1260-2

R.T.: 7.103 min  
 Delta R.T.: 0.000 min  
 Response: 749984  
 Conc: 480.16 ng/ml



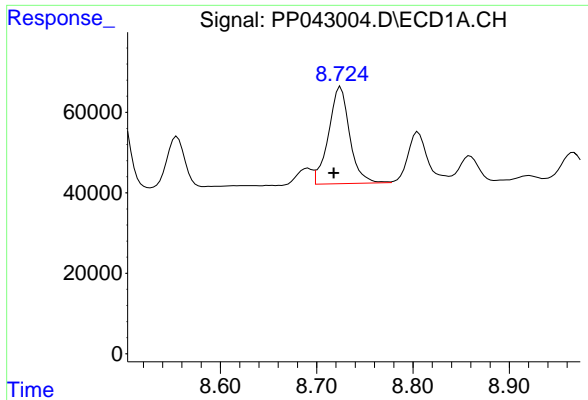
#33 AR-1260-3

R.T.: 8.497 min  
 Delta R.T.: 0.007 min  
 Response: 301234  
 Conc: 399.25 ng/ml



#33 AR-1260-3

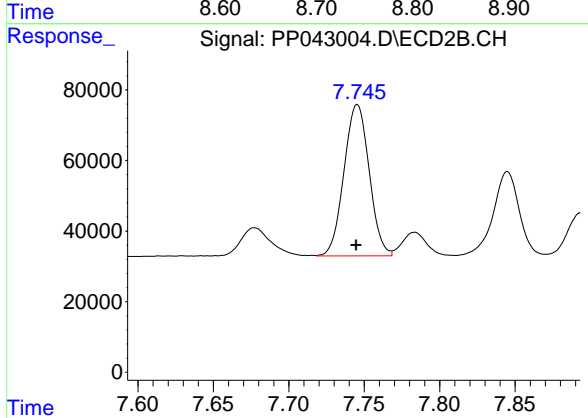
R.T.: 7.260 min  
 Delta R.T.: 0.000 min  
 Response: 700725  
 Conc: 484.84 ng/ml



#34 AR-1260-4

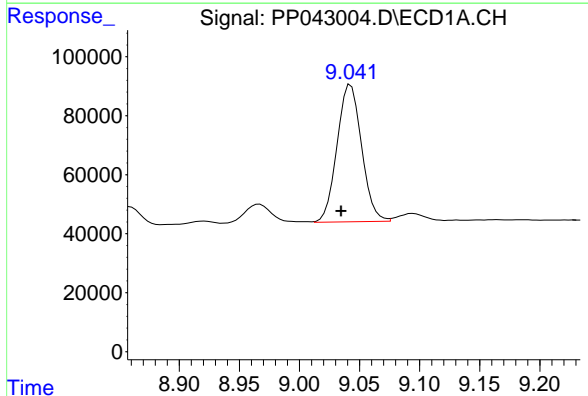
R.T.: 8.725 min  
 Delta R.T.: 0.007 min  
 Response: 368182  
 Conc: 432.24 ng/ml

Instrument :  
 ECD\_P  
 ClientSampleId :  
 PB142064BS



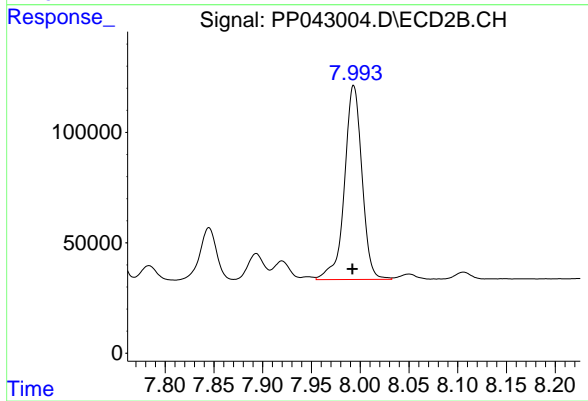
#34 AR-1260-4

R.T.: 7.745 min  
 Delta R.T.: 0.000 min  
 Response: 498337  
 Conc: 439.86 ng/ml



#35 AR-1260-5

R.T.: 9.043 min  
 Delta R.T.: 0.008 min  
 Response: 662659  
 Conc: 402.75 ng/ml



#35 AR-1260-5

R.T.: 7.993 min  
 Delta R.T.: 0.001 min  
 Response: 1098011  
 Conc: 437.80 ng/ml