

Data Path : Z:\pestpcbsrv\HPCHEM1\ECD\_P\Data\PP011821\  
 Data File : PP032801.D  
 Signal(s) : Signal #1: ECD1A.CH Signal #2: ECD2B.CH  
 Acq On : 18 Jan 2021 17:39  
 Operator : DD\AJ  
 Sample : M1160-07  
 Misc :  
 ALS Vial : 9 Sample Multiplier: 1

Instrument :  
 ECD\_P  
 ClientSampleId :  
 BASIN-3

Integration File signal 1: autoint1.e  
 Integration File signal 2: autoint2.e  
 Quant Time: Jan 19 03:30:01 2021  
 Quant Method : Z:\pestpcbsrv\HPCHEM1\ECD\_P\methods\PP011421.M  
 Quant Title : GC EXTRACTABLES  
 QLast Update : Thu Jan 14 08:12:55 2021  
 Response via : Initial Calibration  
 Integrator: ChemStation 6890 Scale Mode: Small noise peaks clipped

Volume Inj. : 2 µl  
 Signal #1 Phase : ZB-MR1 Signal #2 Phase: ZB-MR2  
 Signal #1 Info : 30Mx0.32mmx 0.50µ Signal #2 Info : 30M x 0.32mm x 0.25µm

Compound	RT#1	RT#2	Resp#1	Resp#2	ng/ml	ng/ml
-----						
System Monitoring Compounds						
1) SA Tetrachlo...	4.739	4.012	1308669	1044715	22.532	22.209
2) SA Decachlor...	10.575	9.291	928351	814949	23.530	21.754

Target Compounds

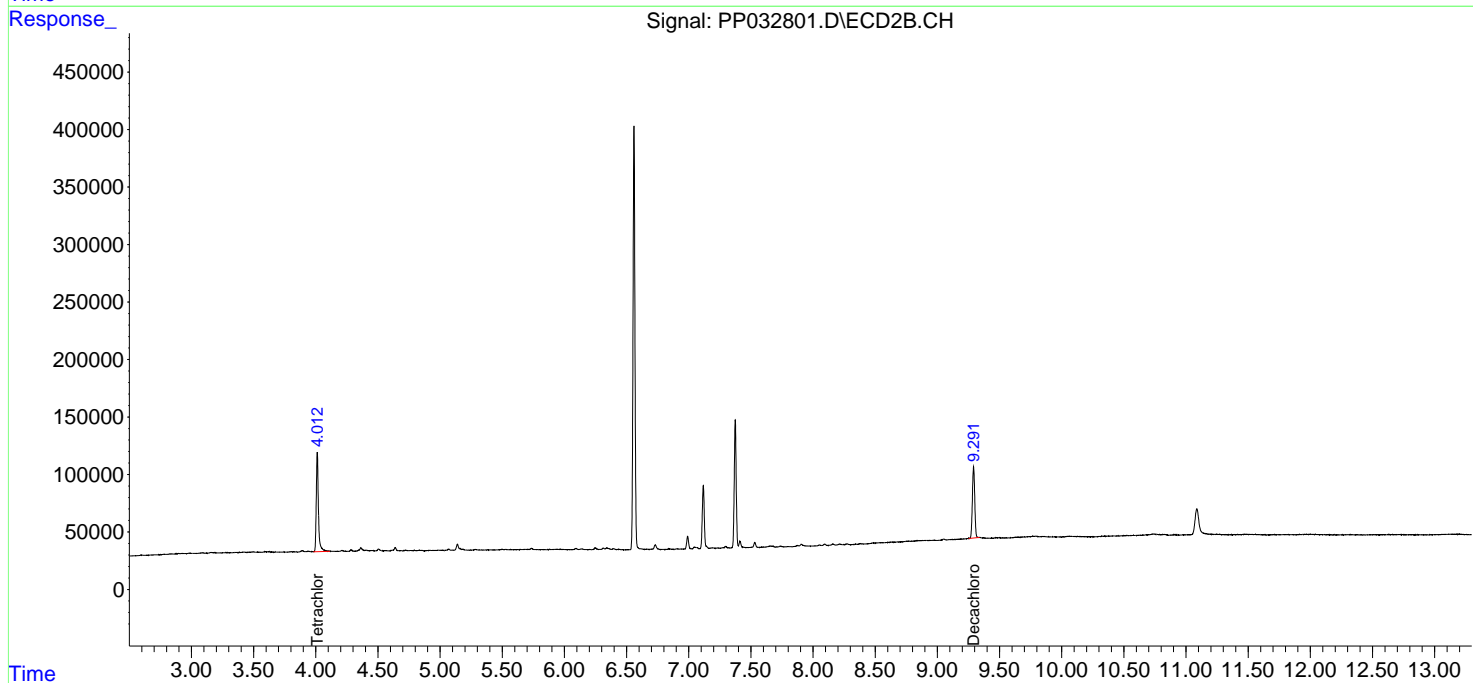
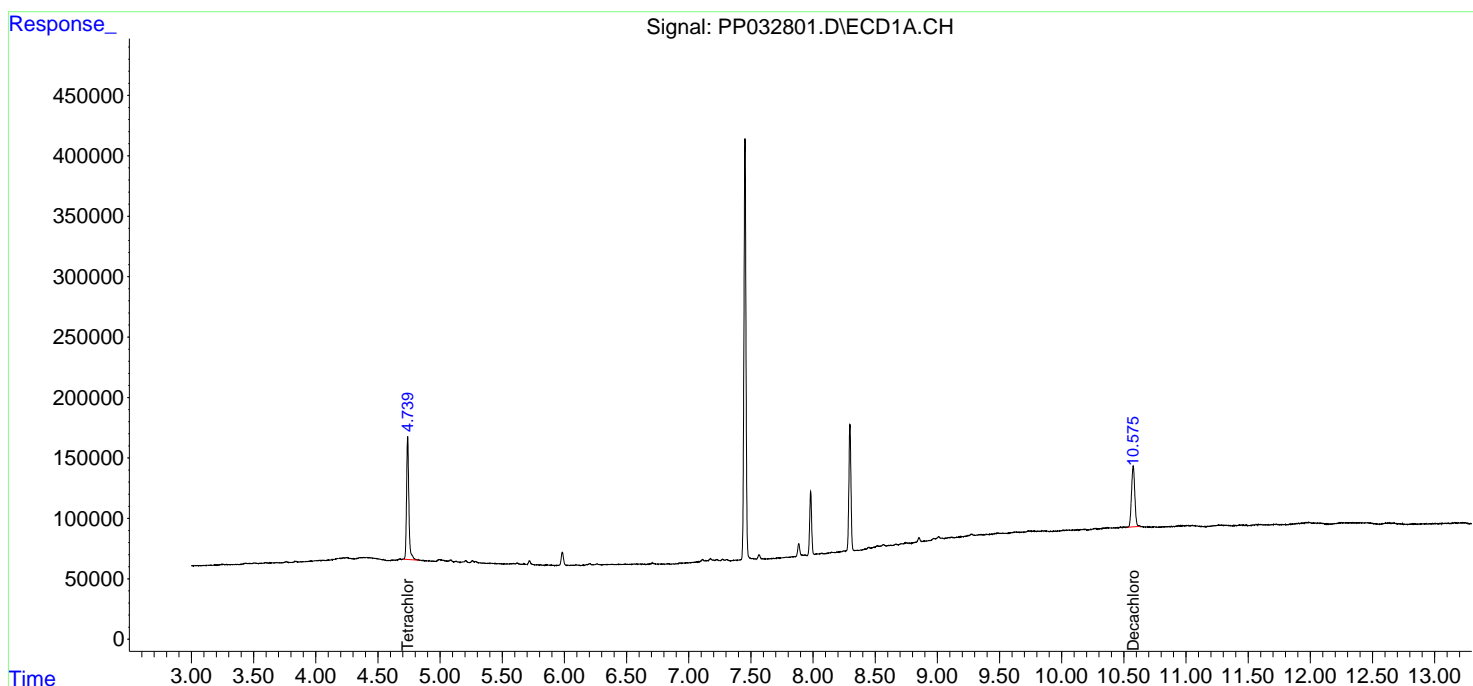
(f)=RT Delta > 1/2 Window (#)=Amounts differ by > 25% (m)=manual int.

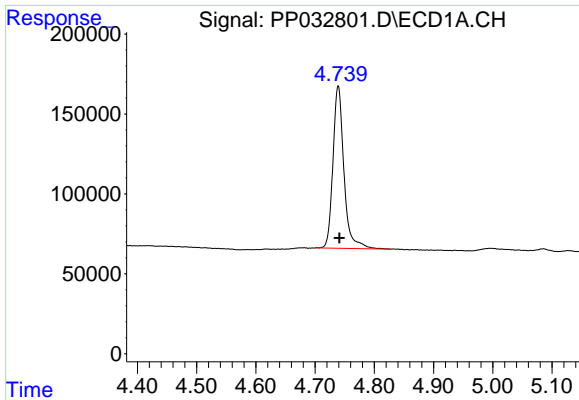
Data Path : Z:\pestpcbsrv\HPCHEM1\ECD\_P\Data\PP011821\  
 Data File : PP032801.D  
 Signal(s) : Signal #1: ECD1A.CH Signal #2: ECD2B.CH  
 Acq On : 18 Jan 2021 17:39  
 Operator : DD\AJ  
 Sample : M1160-07  
 Misc :  
 ALS Vial : 9 Sample Multiplier: 1

Instrument :  
 ECD\_P  
 ClientSampleId :  
 BASIN-3

Integration File signal 1: autoint1.e  
 Integration File signal 2: autoint2.e  
 Quant Time: Jan 19 03:30:01 2021  
 Quant Method : Z:\pestpcbsrv\HPCHEM1\ECD\_P\methods\PP011421.M  
 Quant Title : GC EXTRACTABLES  
 QLast Update : Thu Jan 14 08:12:55 2021  
 Response via : Initial Calibration  
 Integrator: ChemStation 6890 Scale Mode: Small noise peaks clipped

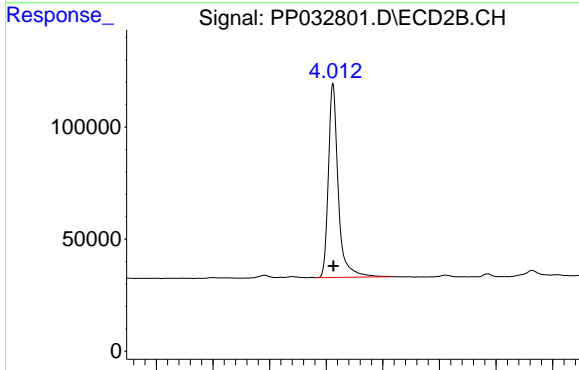
Volume Inj. : 2 µl  
 Signal #1 Phase : ZB-MR1 Signal #2 Phase: ZB-MR2  
 Signal #1 Info : 30Mx0.32mmx 0.50µm Signal #2 Info : 30M x 0.32mm x 0.25µm



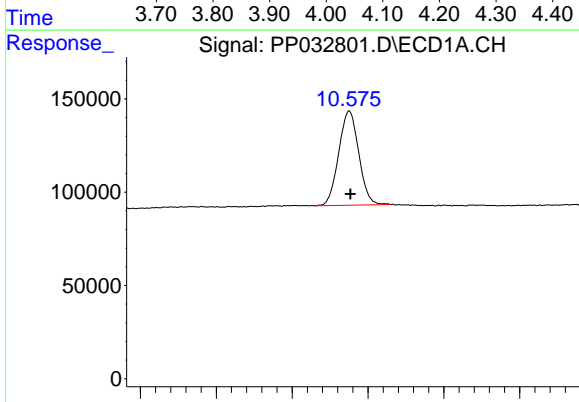


#1 Tetrachloro-m-xylene  
 R.T.: 4.739 min  
 Delta R.T.: -0.002 min  
 Response: 1308669  
 Conc: 22.53 ng/ml

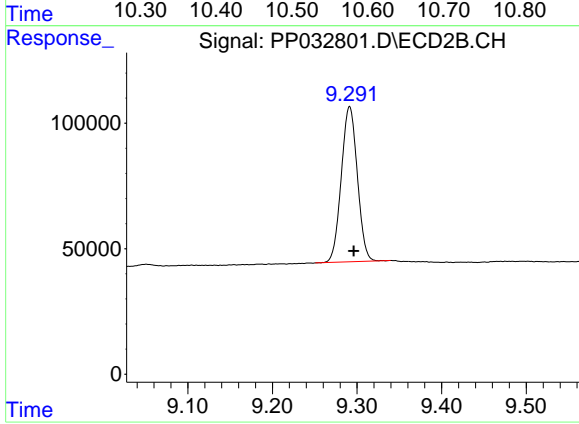
Instrument :  
 ECD\_P  
 ClientSampled :  
 BASIN-3



#1 Tetrachloro-m-xylene  
 R.T.: 4.012 min  
 Delta R.T.: 0.000 min  
 Response: 1044715  
 Conc: 22.21 ng/ml



#2 Decachlorobiphenyl  
 R.T.: 10.575 min  
 Delta R.T.: -0.002 min  
 Response: 928351  
 Conc: 23.53 ng/ml



#2 Decachlorobiphenyl  
 R.T.: 9.291 min  
 Delta R.T.: -0.005 min  
 Response: 814949  
 Conc: 21.75 ng/ml