

Data Path : Z:\pestpcbsrv\HPCHEM1\ECD_P\Data\PP011821\
 Data File : PP032814.D
 Signal(s) : Signal #1: ECD1A.CH Signal #2: ECD2B.CH
 Acq On : 18 Jan 2021 21:32
 Operator : DD\AJ
 Sample : M1106-08 5X
 Misc :
 ALS Vial : 20 Sample Multiplier: 1

Instrument :
 ECD_P
 ClientSampleId :
 S6-03-C

Integration File signal 1: autoint1.e
 Integration File signal 2: autoint2.e
 Quant Time: Jan 19 03:33:41 2021
 Quant Method : Z:\pestpcbsrv\HPCHEM1\ECD_P\methods\PP011421.M
 Quant Title : GC EXTRACTABLES
 QLast Update : Thu Jan 14 08:12:55 2021
 Response via : Initial Calibration
 Integrator: ChemStation 6890 Scale Mode: Small noise peaks clipped

Volume Inj. : 2 µl
 Signal #1 Phase : ZB-MR1 Signal #2 Phase: ZB-MR2
 Signal #1 Info : 30Mx0.32mmx 0.50µ Signal #2 Info : 30M x 0.32mm x 0.25µm

Compound	RT#1	RT#2	Resp#1	Resp#2	ng/ml	ng/ml

System Monitoring Compounds						
1) SA Tetrachlo...	4.739	4.012	239330	177574	4.121	3.775
2) SA Decachlor...	10.573	9.290	107702	104286	2.730	2.784

Target Compounds

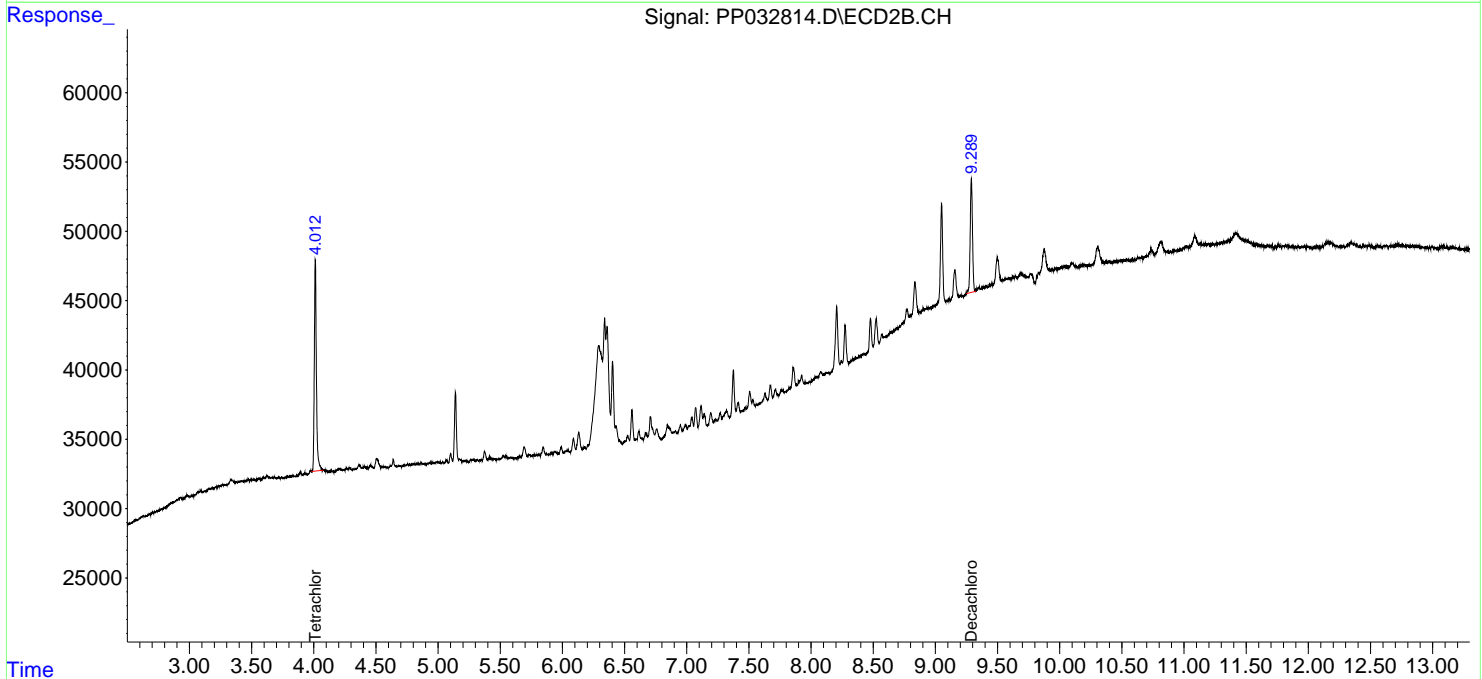
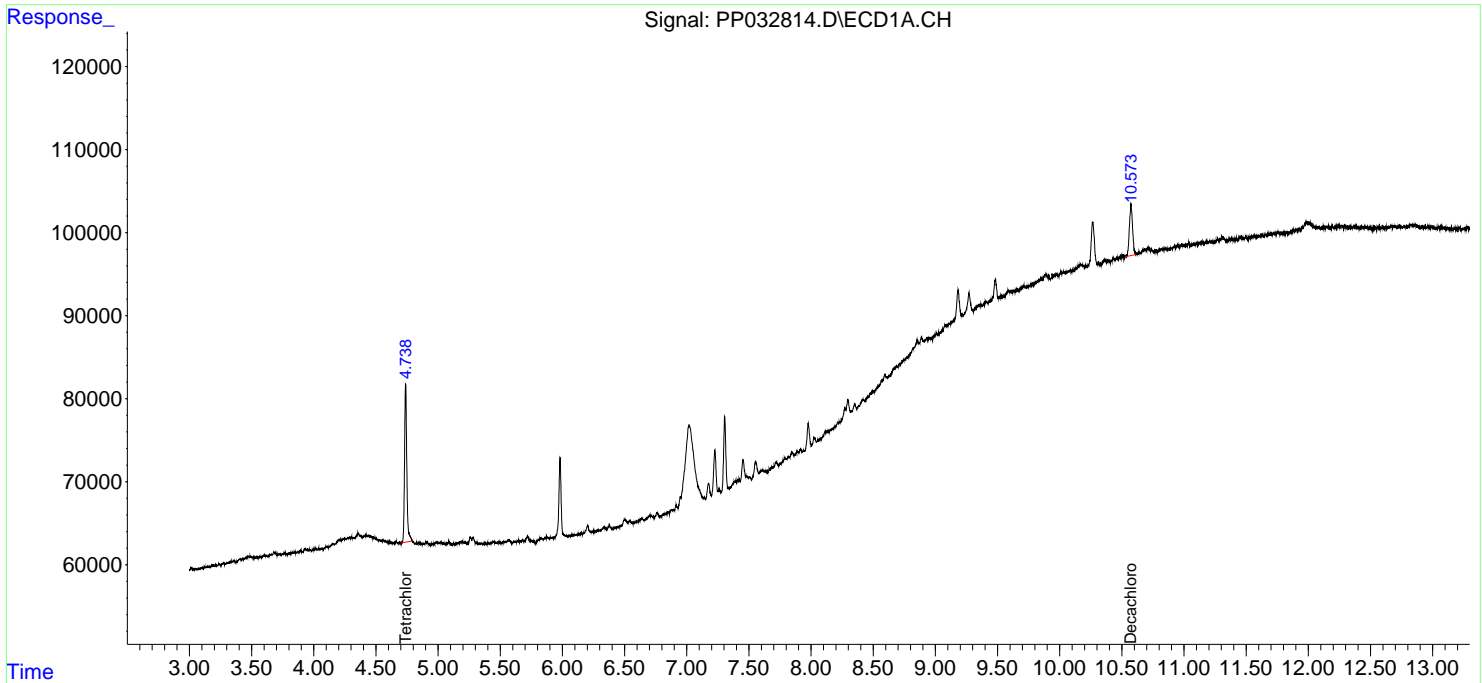
(f)=RT Delta > 1/2 Window (#)=Amounts differ by > 25% (m)=manual int.

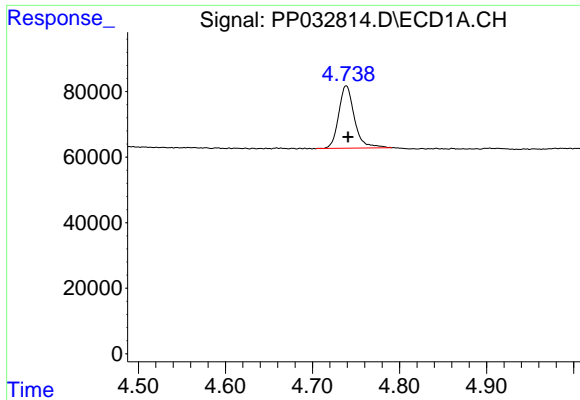
Data Path : Z:\pestpcbsrv\HPCHEM1\ECD_P\Data\PP011821\
 Data File : PP032814.D
 Signal(s) : Signal #1: ECD1A.CH Signal #2: ECD2B.CH
 Acq On : 18 Jan 2021 21:32
 Operator : DD\AJ
 Sample : M1106-08 5X
 Misc :
 ALS Vial : 20 Sample Multiplier: 1

Instrument :
 ECD_P
 ClientSampleId :
 S6-03-C

Integration File signal 1: autoint1.e
 Integration File signal 2: autoint2.e
 Quant Time: Jan 19 03:33:41 2021
 Quant Method : Z:\pestpcbsrv\HPCHEM1\ECD_P\methods\PP011421.M
 Quant Title : GC EXTRACTABLES
 QLast Update : Thu Jan 14 08:12:55 2021
 Response via : Initial Calibration
 Integrator: ChemStation 6890 Scale Mode: Small noise peaks clipped

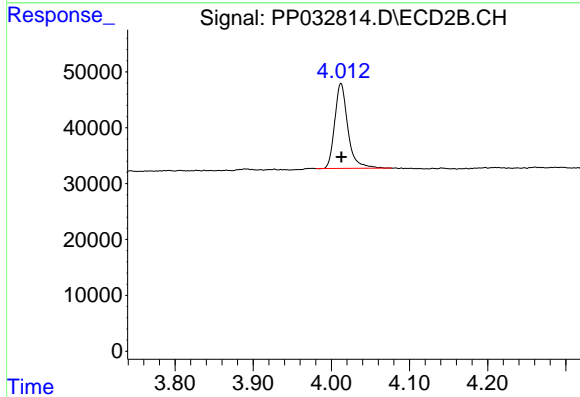
Volume Inj. : 2 µl
 Signal #1 Phase : ZB-MR1 Signal #2 Phase: ZB-MR2
 Signal #1 Info : 30Mx0.32mmx 0.50µ Signal #2 Info : 30M x 0.32mm x 0.25µm



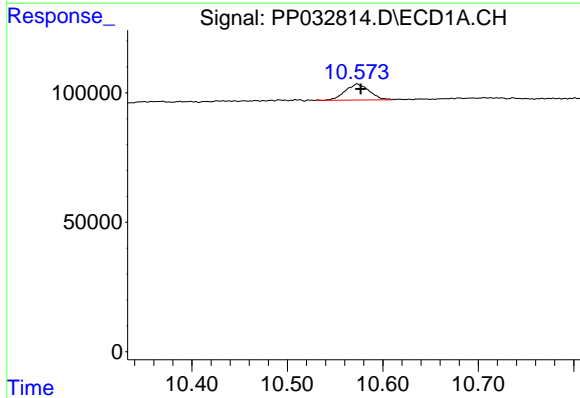


#1 Tetrachloro-m-xylene
 R.T.: 4.739 min
 Delta R.T.: -0.002 min
 Response: 239330
 Conc: 4.12 ng/ml

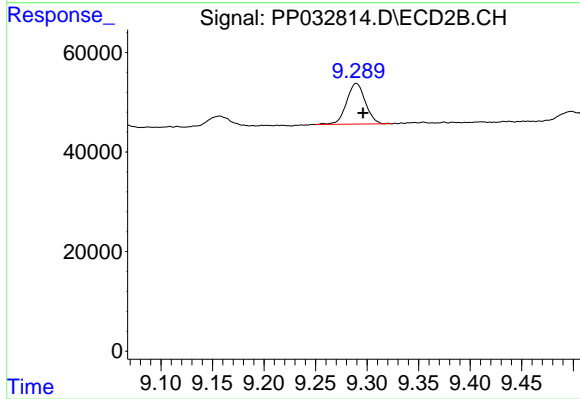
Instrument :
 ECD_P
 ClientSampled :
 S6-03-C



#1 Tetrachloro-m-xylene
 R.T.: 4.012 min
 Delta R.T.: 0.000 min
 Response: 177574
 Conc: 3.77 ng/ml



#2 Decachlorobiphenyl
 R.T.: 10.573 min
 Delta R.T.: -0.003 min
 Response: 107702
 Conc: 2.73 ng/ml



#2 Decachlorobiphenyl
 R.T.: 9.290 min
 Delta R.T.: -0.006 min
 Response: 104286
 Conc: 2.78 ng/ml