

Data Path : Z:\pestpcbsrv\HPCHEM1\ECD_P\Data\PP011823\
 Data File : PP054696.D
 Signal(s) : Signal #1: ECD1A.ch Signal #2: ECD2B.ch
 Acq On : 19 Jan 2023 00:06
 Operator : YP\AJ
 Sample : AR1660CCC500
 Misc :
 ALS Vial : 3 Sample Multiplier: 1

Instrument :
 ECD_P
ClientSampleId :
 AR1660CCC500

Manual Integrations
APPROVED

Reviewed By :Yogesh Patel 01/19/2023
 Supervised By :Ankita Jodhani 01/19/2023

Integration File signal 1: autoint1.e
 Integration File signal 2: autoint2.e
 Quant Time: Jan 19 03:40:48 2023
 Quant Method : Z:\pestpcbsrv\HPCHEM1\ECD_P\methods\PP011723.M
 Quant Title : GC EXTRACTABLES
 QLast Update : Wed Jan 18 04:34:06 2023
 Response via : Initial Calibration
 Integrator: ChemStation

Volume Inj. : 2 µl
 Signal #1 Phase : ZB-MR1 Signal #2 Phase: ZB-MR2
 Signal #1 Info : 30Mx0.32mmx 0.50µ Signal #2 Info : 30M x 0.32mm x 0.25µm

Compound	RT#1	RT#2	Resp#1	Resp#2	ng/ml	ng/ml

System Monitoring Compounds						
1) SA Tetrachlo...	4.331	3.577	96636406	84514904	52.629	52.799
2) SA Decachlor...	10.091	8.598	71346880	71614894	53.154	50.008
Target Compounds						
3) L1 AR-1016-1	5.503	4.664	34676767	27036067	535.446	536.754
4) L1 AR-1016-2	5.526	4.682	50834509	38669061	537.954	541.664
5) L1 AR-1016-3	5.588	4.859	31765893	20669591	532.657	530.895
6) L1 AR-1016-4	5.687	4.902	25779510	16364820	542.483	481.826
7) L1 AR-1016-5	5.983	5.115	26451632	22491547	546.377	513.343m
31) L7 AR-1260-1	7.114	6.153	37021455	44320563	538.997	533.854
32) L7 AR-1260-2	7.373	6.342	43241478	49418167	540.720	536.890
33) L7 AR-1260-3	7.735	6.496	32104196	46868192	532.944	521.460
34) L7 AR-1260-4	7.961	6.970	37025089	39260167	529.166	521.617
35) L7 AR-1260-5	8.278	7.212	69831001	83720416	536.009	526.861

(f)=RT Delta > 1/2 Window (#)=Amounts differ by > 25% (m)=manual int.

Data Path : Z:\pestpcbsrv\HPCHEM1\ECD_P\Data\PP011823\
 Data File : PP054696.D
 Signal(s) : Signal #1: ECD1A.ch Signal #2: ECD2B.ch
 Acq On : 19 Jan 2023 00:06
 Operator : YP\AJ
 Sample : AR1660CCC500
 Misc :
 ALS Vial : 3 Sample Multiplier: 1

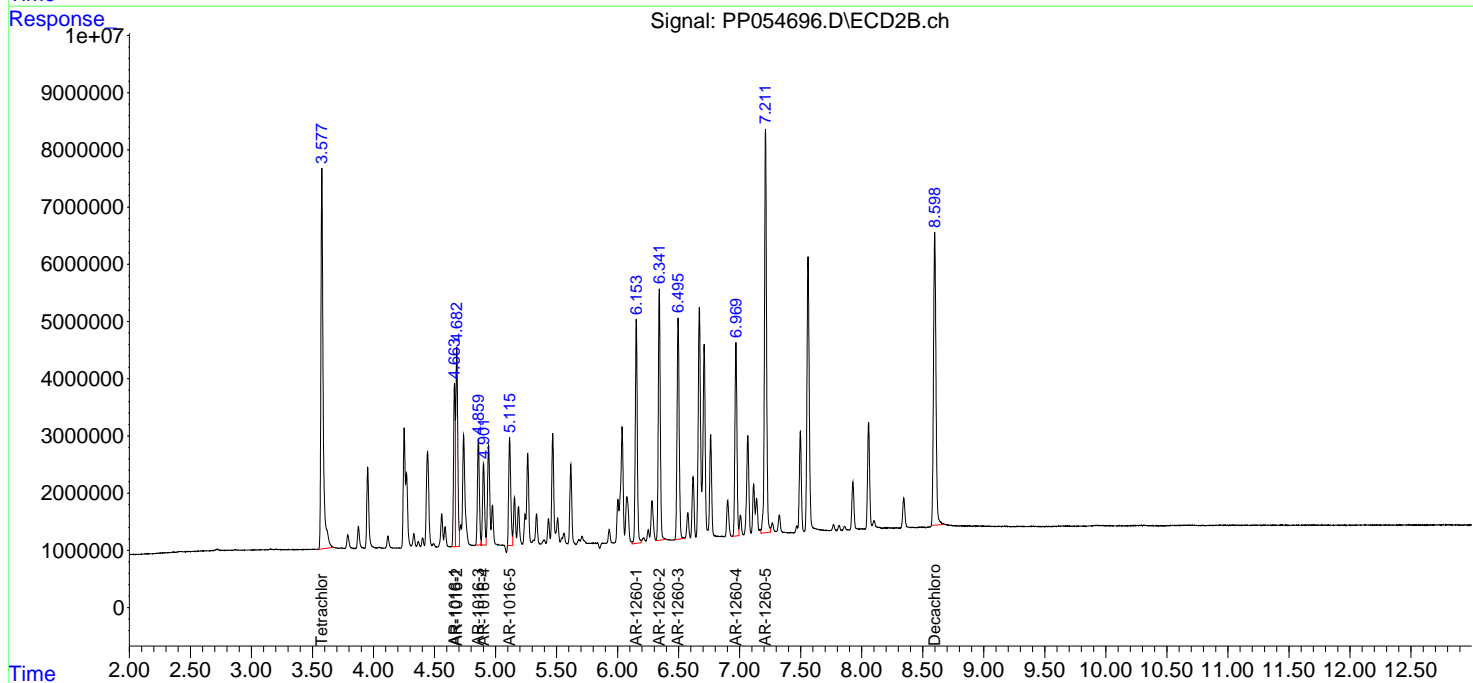
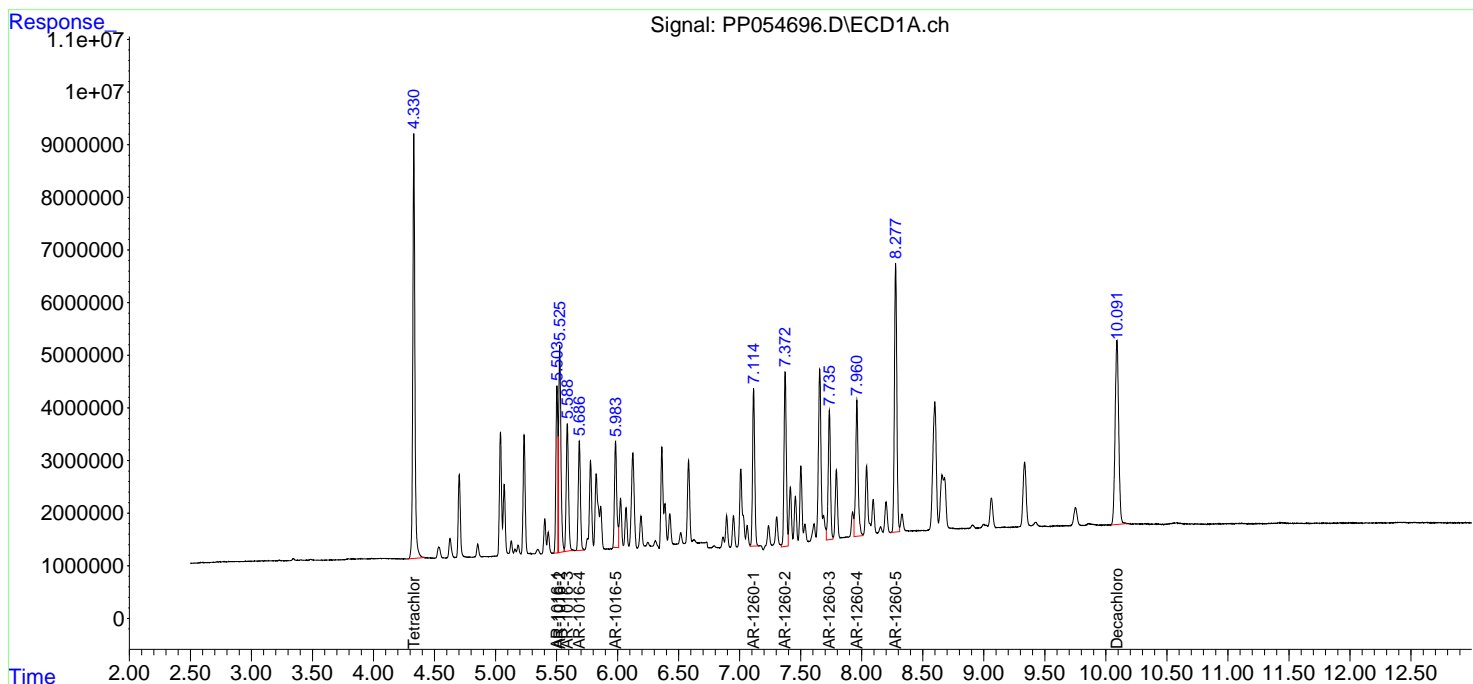
Instrument :
 ECD_P
 ClientSampleId :
 AR1660CCC500

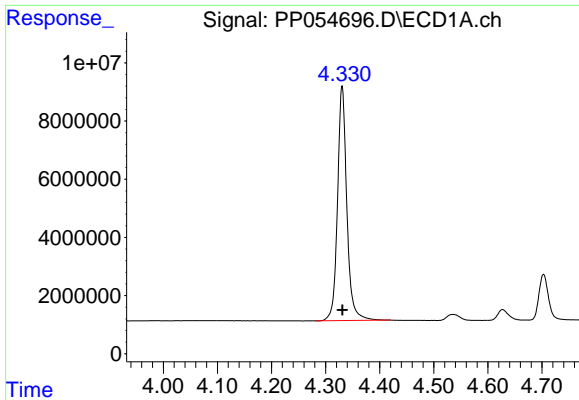
Manual Integrations
 APPROVED

Reviewed By :Yogesh Patel 01/19/2023
 Supervised By :Ankita Jodhani 01/19/2023

Integration File signal 1: autoint1.e
 Integration File signal 2: autoint2.e
 Quant Time: Jan 19 03:40:48 2023
 Quant Method : Z:\pestpcbsrv\HPCHEM1\ECD_P\methods\PP011723.M
 Quant Title : GC EXTRACTABLES
 QLast Update : Wed Jan 18 04:34:06 2023
 Response via : Initial Calibration
 Integrator: ChemStation

Volume Inj. : 2 µl
 Signal #1 Phase : ZB-MR1 Signal #2 Phase: ZB-MR2
 Signal #1 Info : 30Mx0.32mmx 0.50µ Signal #2 Info : 30M x 0.32mm x 0.25µm





#1 Tetrachloro-m-xylene

R.T.: 4.331 min
 Delta R.T.: 0.000 min
 Response: 96636406
 Conc: 52.63 ng/ml

Instrument :

ECD_P

ClientSampleId :

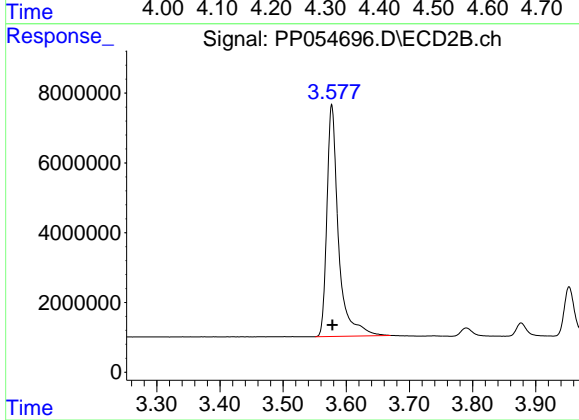
AR1660CCC500

Manual Integrations

APPROVED

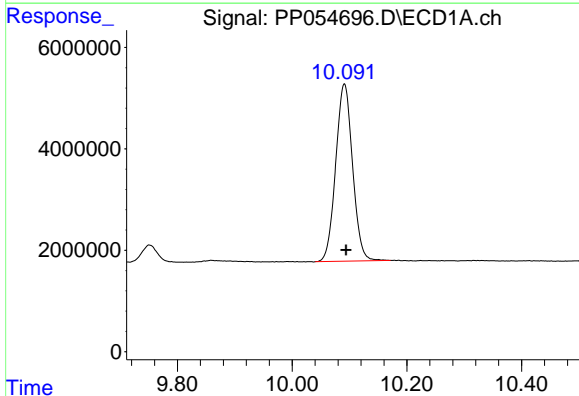
Reviewed By :Yogesh Patel 01/19/2023

Supervised By :Ankita Jodhani 01/19/2023



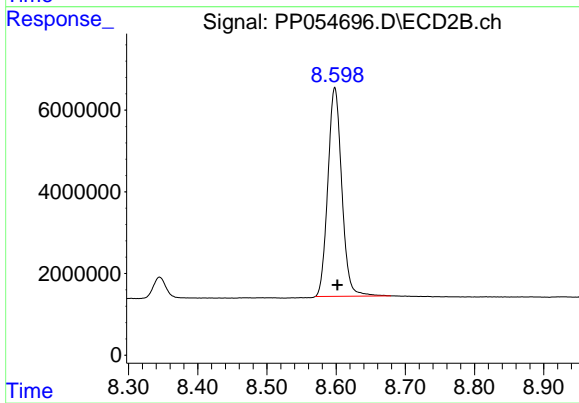
#1 Tetrachloro-m-xylene

R.T.: 3.577 min
 Delta R.T.: -0.001 min
 Response: 84514904
 Conc: 52.80 ng/ml



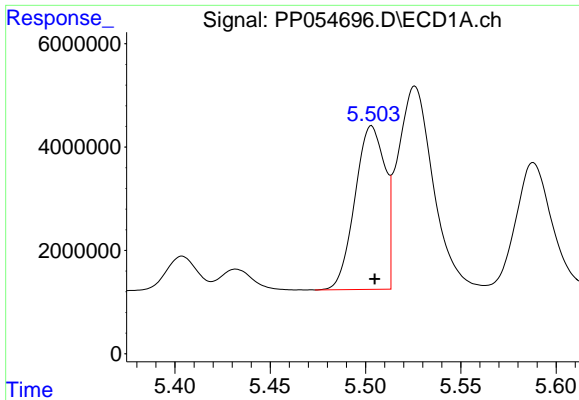
#2 Decachlorobiphenyl

R.T.: 10.091 min
 Delta R.T.: -0.003 min
 Response: 71346880
 Conc: 53.15 ng/ml



#2 Decachlorobiphenyl

R.T.: 8.598 min
 Delta R.T.: -0.004 min
 Response: 71614894
 Conc: 50.01 ng/ml



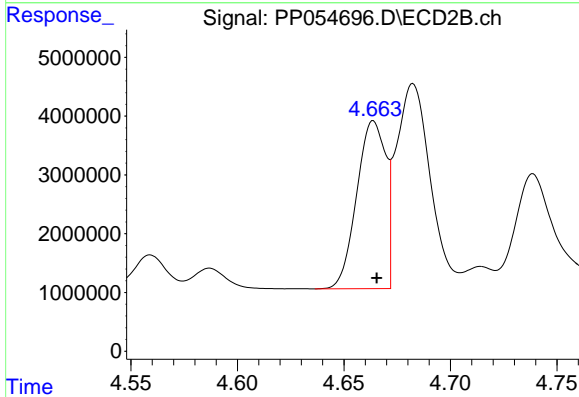
#3 AR-1016-1

R.T.: 5.503 min
 Delta R.T.: -0.002 min
 Response: 34676767
 Conc: 535.45 ng/ml

Instrument :
 ECD_P
 ClientSampleId :
 AR1660CCC500

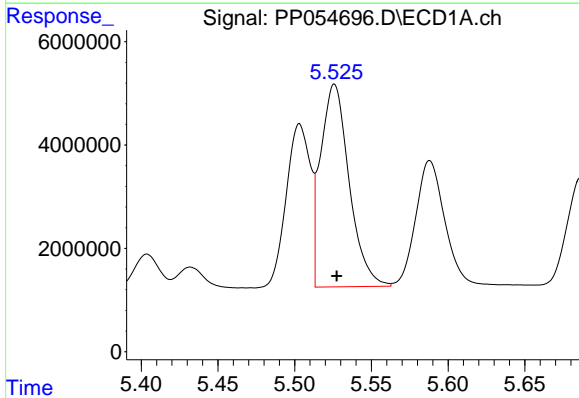
Manual Integrations
 APPROVED

Reviewed By :Yogesh Patel 01/19/2023
 Supervised By :Ankita Jodhani 01/19/2023



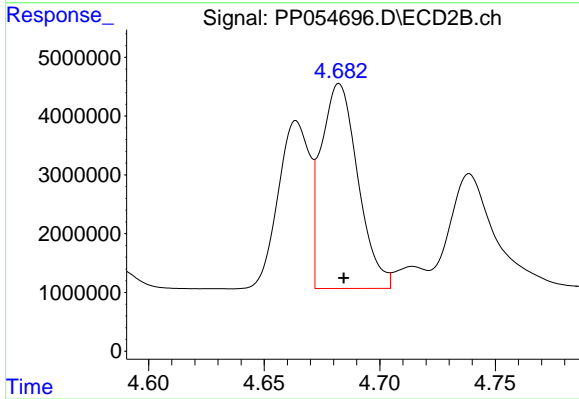
#3 AR-1016-1

R.T.: 4.664 min
 Delta R.T.: -0.002 min
 Response: 27036067
 Conc: 536.75 ng/ml



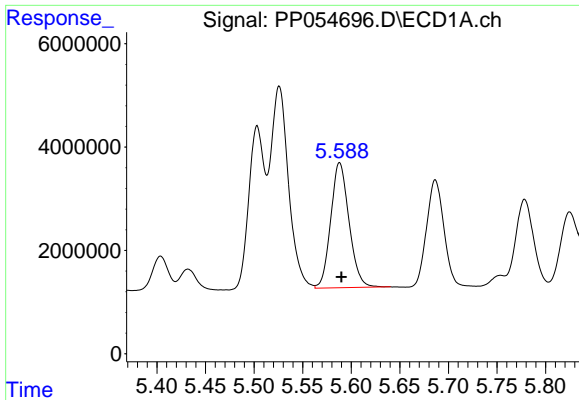
#4 AR-1016-2

R.T.: 5.526 min
 Delta R.T.: -0.002 min
 Response: 50834509
 Conc: 537.95 ng/ml



#4 AR-1016-2

R.T.: 4.682 min
 Delta R.T.: -0.002 min
 Response: 38669061
 Conc: 541.66 ng/ml



#5 AR-1016-3

R.T.: 5.588 min
 Delta R.T.: -0.002 min
 Response: 31765893
 Conc: 532.66 ng/ml

Instrument :

ECD_P

ClientSampleId :

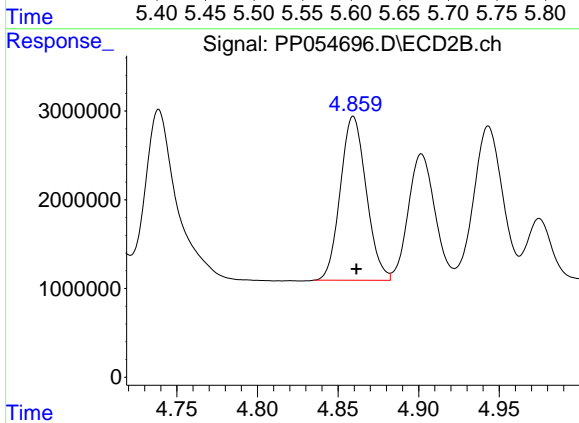
AR1660CCC500

Manual Integrations

APPROVED

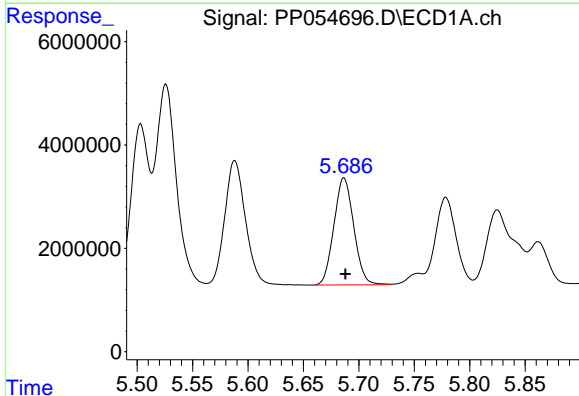
Reviewed By :Yogesh Patel 01/19/2023

Supervised By :Ankita Jodhani 01/19/2023



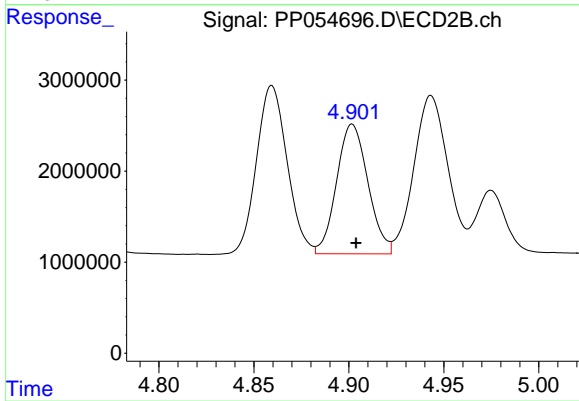
#5 AR-1016-3

R.T.: 4.859 min
 Delta R.T.: -0.002 min
 Response: 20669591
 Conc: 530.90 ng/ml



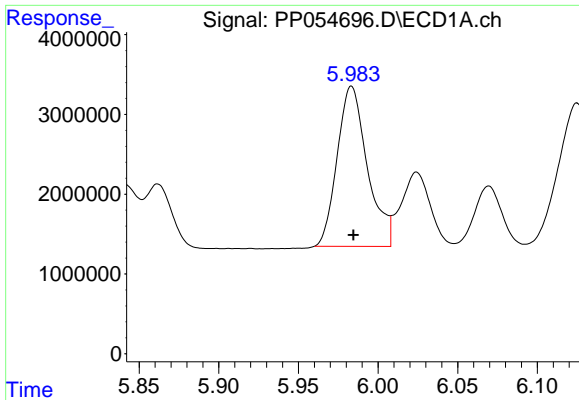
#6 AR-1016-4

R.T.: 5.687 min
 Delta R.T.: -0.001 min
 Response: 25779510
 Conc: 542.48 ng/ml



#6 AR-1016-4

R.T.: 4.902 min
 Delta R.T.: -0.002 min
 Response: 16364820
 Conc: 481.83 ng/ml



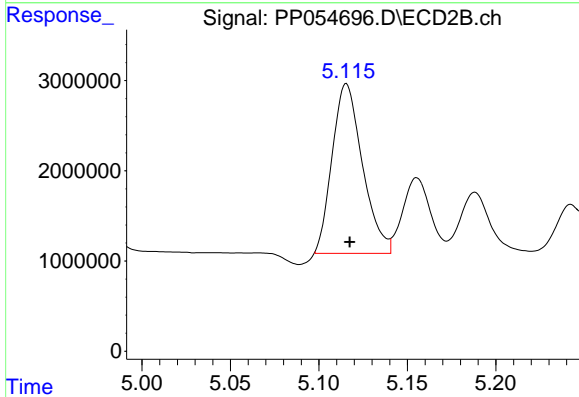
#7 AR-1016-5

R.T.: 5.983 min
 Delta R.T.: -0.001 min
 Response: 26451632
 Conc: 546.38 ng/ml

Instrument :
 ECD_P
 ClientSampleId :
 AR1660CCC500

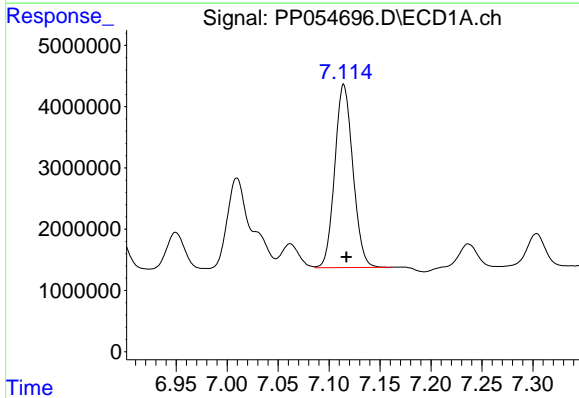
Manual Integrations
 APPROVED

Reviewed By :Yogesh Patel 01/19/2023
 Supervised By :Ankita Jodhani 01/19/2023



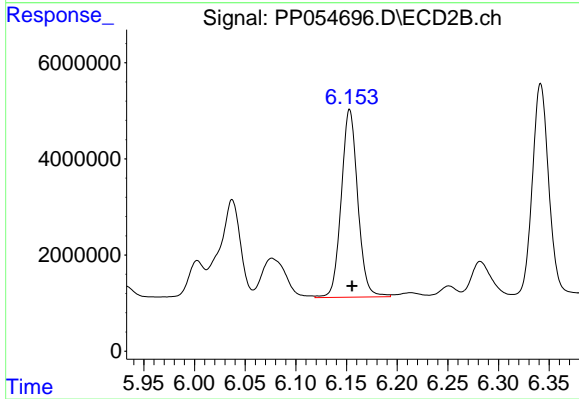
#7 AR-1016-5

R.T.: 5.115 min
 Delta R.T.: -0.002 min
 Response: 22491547
 Conc: 513.34 ng/ml m



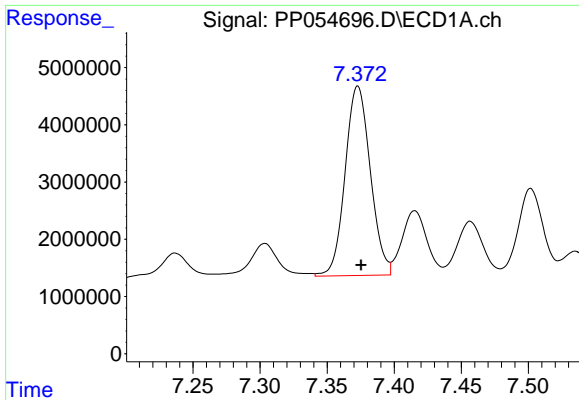
#31 AR-1260-1

R.T.: 7.114 min
 Delta R.T.: -0.003 min
 Response: 37021455
 Conc: 539.00 ng/ml



#31 AR-1260-1

R.T.: 6.153 min
 Delta R.T.: -0.002 min
 Response: 44320563
 Conc: 533.85 ng/ml



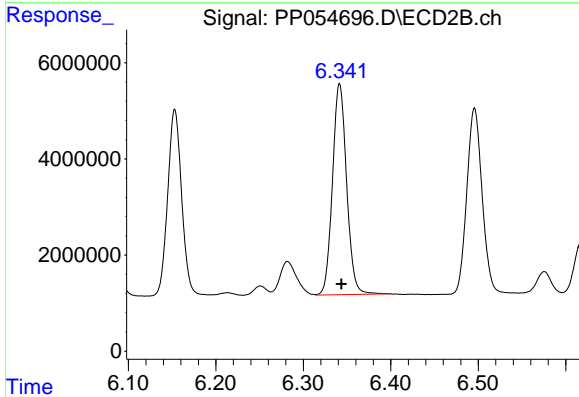
#32 AR-1260-2

R.T.: 7.373 min
 Delta R.T.: -0.003 min
 Response: 43241478
 Conc: 540.72 ng/ml

Instrument :
 ECD_P
 ClientSampleId :
 AR1660CCC500

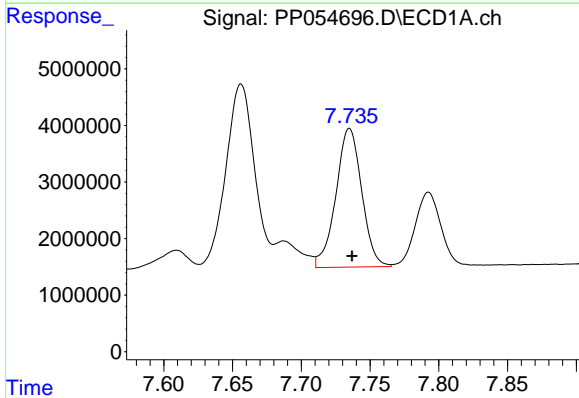
Manual Integrations
 APPROVED

Reviewed By :Yogesh Patel 01/19/2023
 Supervised By :Ankita Jodhani 01/19/2023



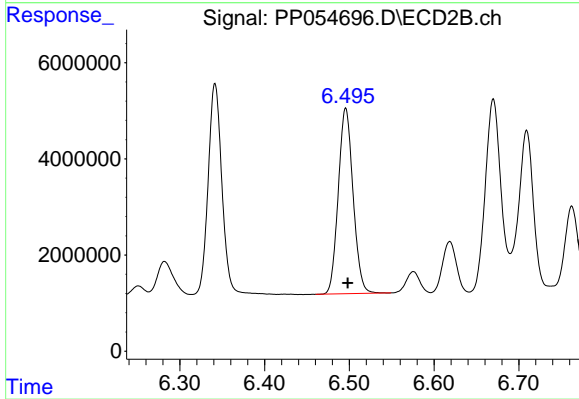
#32 AR-1260-2

R.T.: 6.342 min
 Delta R.T.: -0.002 min
 Response: 49418167
 Conc: 536.89 ng/ml



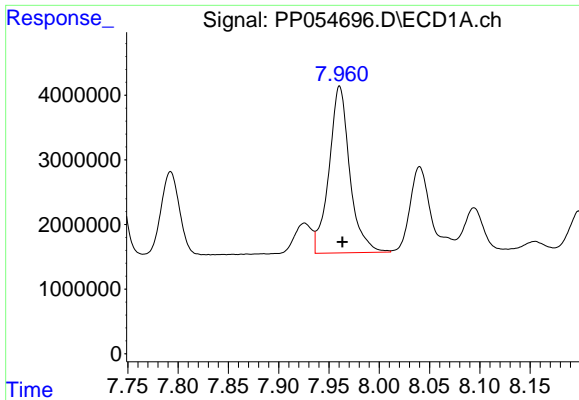
#33 AR-1260-3

R.T.: 7.735 min
 Delta R.T.: -0.002 min
 Response: 32104196
 Conc: 532.94 ng/ml



#33 AR-1260-3

R.T.: 6.496 min
 Delta R.T.: -0.002 min
 Response: 46868192
 Conc: 521.46 ng/ml



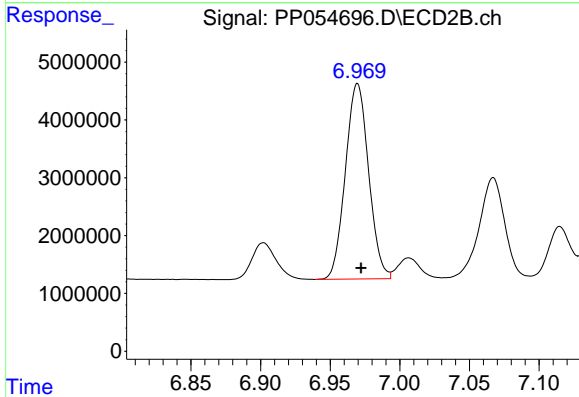
#34 AR-1260-4

R.T.: 7.961 min
 Delta R.T.: -0.003 min
 Response: 37025089
 Conc: 529.17 ng/ml

Instrument :
 ECD_P
 ClientSampleId :
 AR1660CCC500

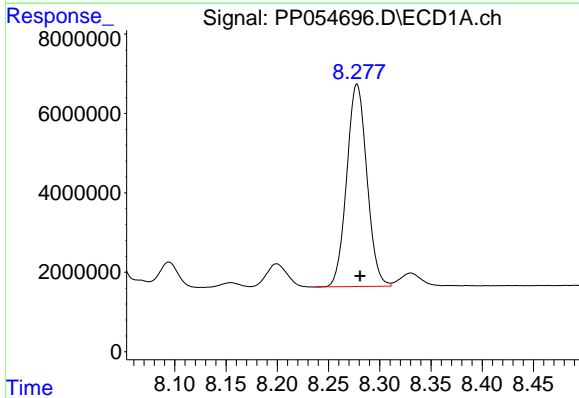
Manual Integrations
 APPROVED

Reviewed By :Yogesh Patel 01/19/2023
 Supervised By :Ankita Jodhani 01/19/2023



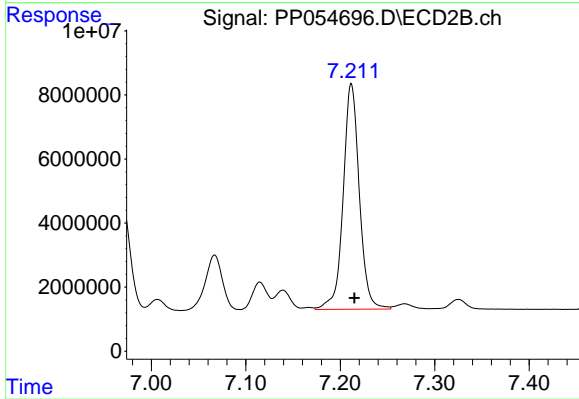
#34 AR-1260-4

R.T.: 6.970 min
 Delta R.T.: -0.003 min
 Response: 39260167
 Conc: 521.62 ng/ml



#35 AR-1260-5

R.T.: 8.278 min
 Delta R.T.: -0.003 min
 Response: 69831001
 Conc: 536.01 ng/ml



#35 AR-1260-5

R.T.: 7.212 min
 Delta R.T.: -0.003 min
 Response: 83720416
 Conc: 526.86 ng/ml