

Data Path : Z:\pestpcbsrv\HPCHEM1\ECD_P\Data\PP011824\
 Data File : PP062990.D
 Signal(s) : Signal #1: ECD1A.ch Signal #2: ECD2B.ch
 Acq On : 18 Jan 2024 12:53
 Operator : YP\AJ
 Sample : PB158470BL
 Misc :
 ALS Vial : 7 Sample Multiplier: 1

Instrument :
 ECD_P
 ClientSampleId :
 PB158470BL

Integration File signal 1: autoint1.e
 Integration File signal 2: autoint2.e
 Quant Time: Jan 18 21:55:30 2024
 Quant Method : Z:\pestpcbsrv\HPCHEM1\ECD_P\methods\PP011024.M
 Quant Title : GC EXTRACTABLES
 QLast Update : Thu Jan 11 02:58:31 2024
 Response via : Initial Calibration
 Integrator: ChemStation

Volume Inj. : 2 µl
 Signal #1 Phase : ZB-MR2 Signal #2 Phase: ZB-MR2
 Signal #1 Info : 30Mx0.32mmx 0.50µ Signal #2 Info : 30M x 0.32mm x 0.25µm

Compound	RT#1	RT#2	Resp#1	Resp#2	ng/ml	ng/ml

System Monitoring Compounds						
1) SA Tetrachlo...	4.406	3.683	45672537	62913083	17.612	18.031
2) SA Decachlor...	10.180	8.793	32618658	44144330	20.626	18.919
Target Compounds						
3) L1 AR-1016-1	0.000	4.800	0	822088	N.D.	7.667 #
4) L1 AR-1016-2	0.000	4.800	0	822088	N.D.	5.498 #
5) L1 AR-1016-3	5.655	0.000	794500	0	10.989	N.D. #
6) L1 AR-1016-4	0.000	5.040	0	364175	N.D.	5.410 #
9) L2 AR-1221-2	4.716f	3.990	965098	951715	39.446	30.790
12) L3 AR-1232-2	0.000	4.800	0	822088	N.D.	11.749 #
16) L4 AR-1242-1	0.000	4.800	0	822088	N.D.	9.434 #
17) L4 AR-1242-2	0.000	4.800	0	822088	N.D.	6.812 #
18) L4 AR-1242-3	5.655	0.000	794500	0	13.414	N.D. #
21) L5 AR-1248-1	0.000	4.800	0	822088	N.D.	12.512 #
22) L5 AR-1248-2	0.000	5.040	0	364175	N.D.	3.736 #
33) L7 AR-1260-3	0.000	6.632	0	489794	N.D.	2.647 #
39) L8 AR-1262-4	8.732f	0.000	327519	0	3.068	N.D. #
42) L9 AR-1268-2	8.732f	0.000	327519	0	1.640	N.D. #
45) L9 AR-1268-5	9.837f	8.525	494249	55577	0.915	0.067 #

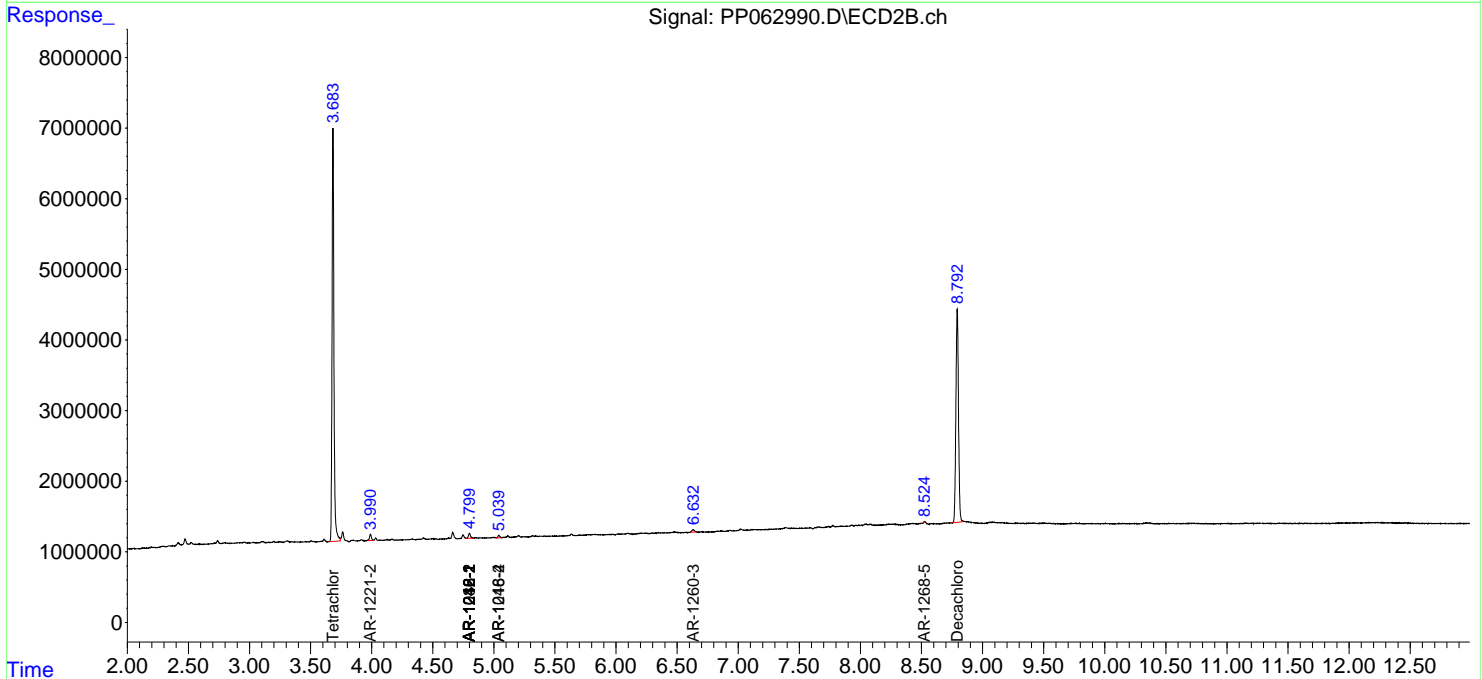
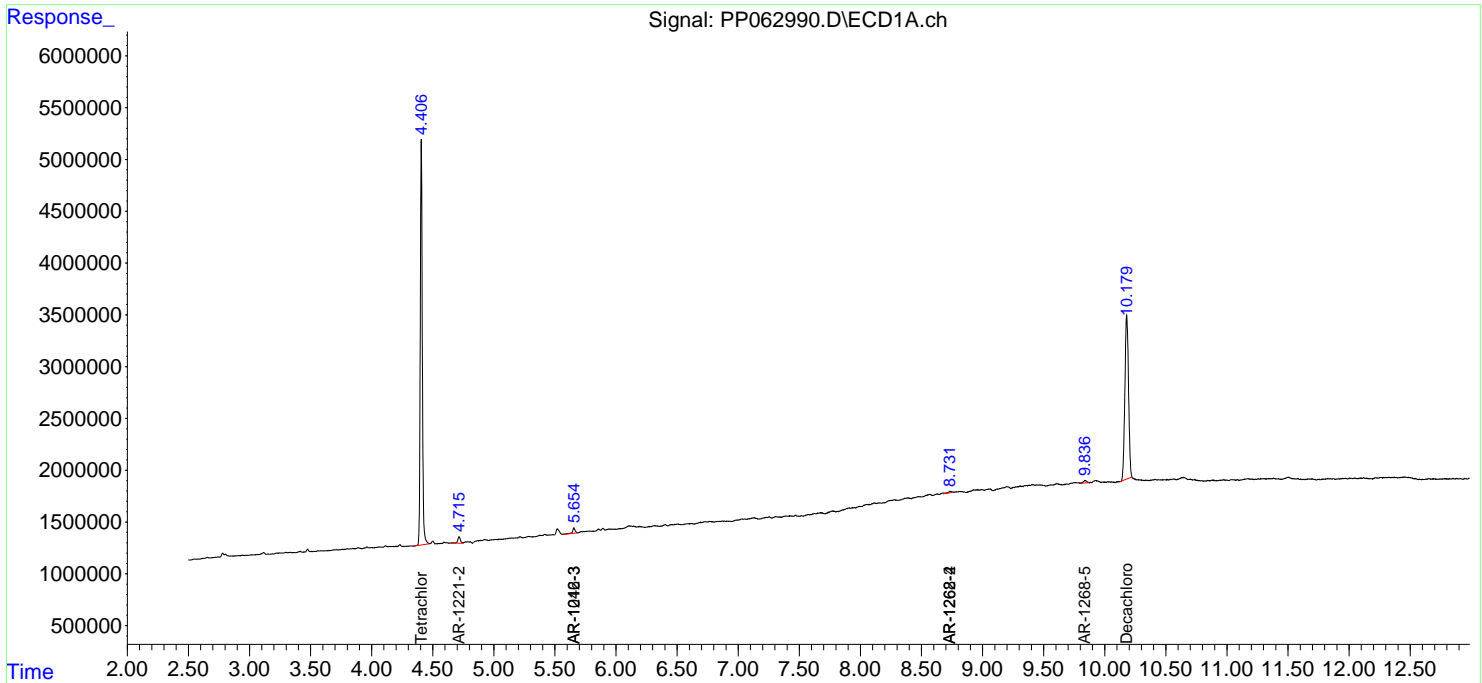
(f)=RT Delta > 1/2 Window (#)=Amounts differ by > 25% (m)=manual int.

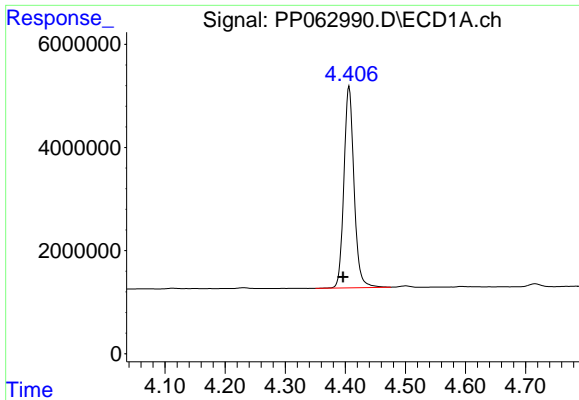
Data Path : Z:\pestpcbsrv\HPCHEM1\ECD_P\Data\PP011824\
 Data File : PP062990.D
 Signal(s) : Signal #1: ECD1A.ch Signal #2: ECD2B.ch
 Acq On : 18 Jan 2024 12:53
 Operator : YP\AJ
 Sample : PB158470BL
 Misc :
 ALS Vial : 7 Sample Multiplier: 1

Instrument :
 ECD_P
 ClientSampleId :
 PB158470BL

Integration File signal 1: autoint1.e
 Integration File signal 2: autoint2.e
 Quant Time: Jan 18 21:55:30 2024
 Quant Method : Z:\pestpcbsrv\HPCHEM1\ECD_P\methods\PP011024.M
 Quant Title : GC EXTRACTABLES
 QLast Update : Thu Jan 11 02:58:31 2024
 Response via : Initial Calibration
 Integrator: ChemStation

Volume Inj. : 2 µl
 Signal #1 Phase : ZB-MR1 Signal #2 Phase: ZB-MR2
 Signal #1 Info : 30Mx0.32mmx 0.50µ Signal #2 Info : 30M x 0.32mm x 0.25µm

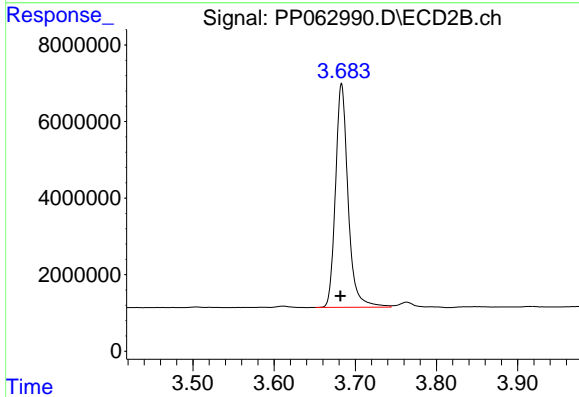




#1 Tetrachloro-m-xylene

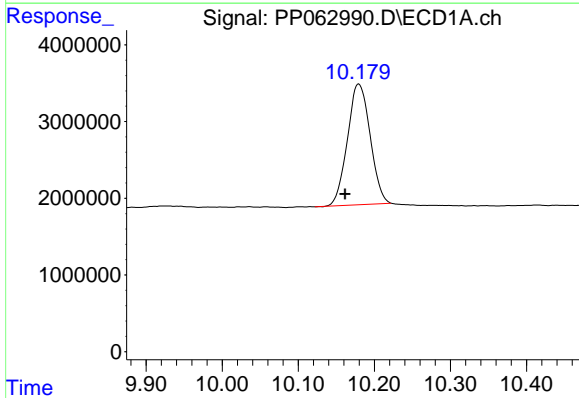
R.T.: 4.406 min
 Delta R.T.: 0.010 min
 Response: 45672537
 Conc: 17.61 ng/ml

Instrument :
 ECD_P
 ClientSampleId :
 PB158470BL



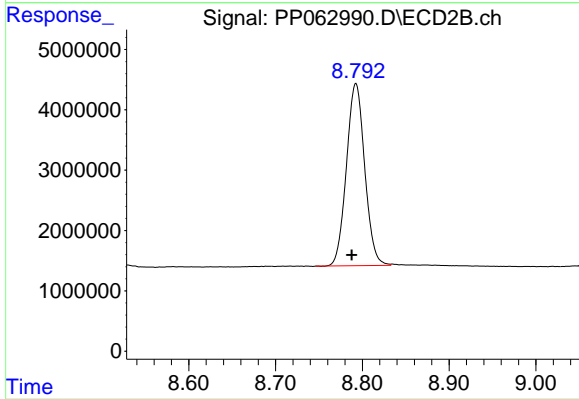
#1 Tetrachloro-m-xylene

R.T.: 3.683 min
 Delta R.T.: 0.001 min
 Response: 62913083
 Conc: 18.03 ng/ml



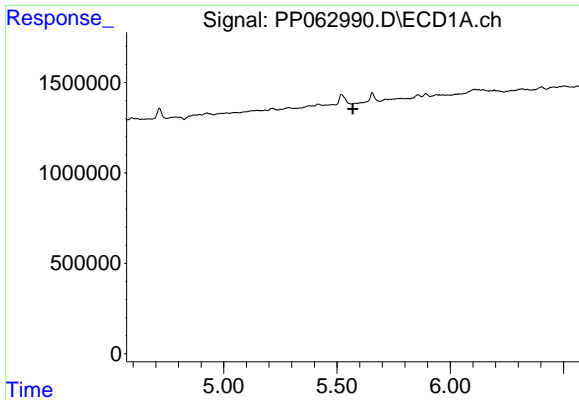
#2 Decachlorobiphenyl

R.T.: 10.180 min
 Delta R.T.: 0.018 min
 Response: 32618658
 Conc: 20.63 ng/ml



#2 Decachlorobiphenyl

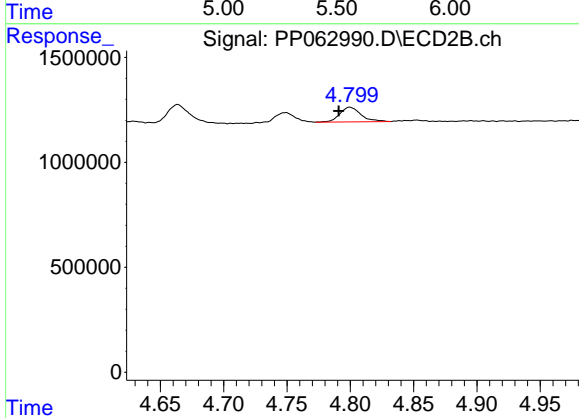
R.T.: 8.793 min
 Delta R.T.: 0.005 min
 Response: 44144330
 Conc: 18.92 ng/ml



#3 AR-1016-1

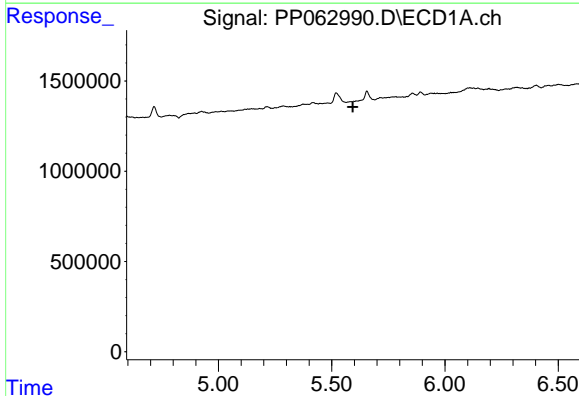
R.T.: 0.000 min
 Exp R.T.: 5.570 min
 Response: 0
 Conc: N.D.

Instrument :
 ECD_P
 ClientSampleId :
 PB158470BL



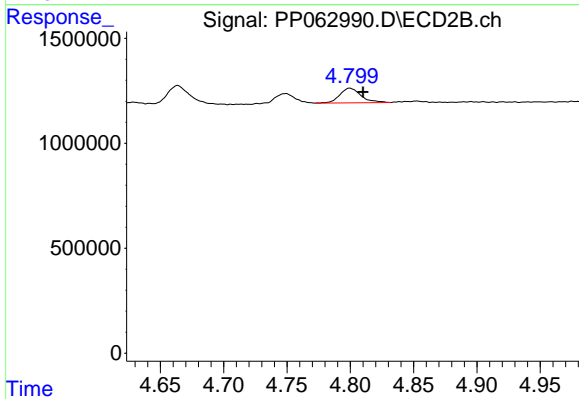
#3 AR-1016-1

R.T.: 4.800 min
 Delta R.T.: 0.009 min
 Response: 822088
 Conc: 7.67 ng/ml



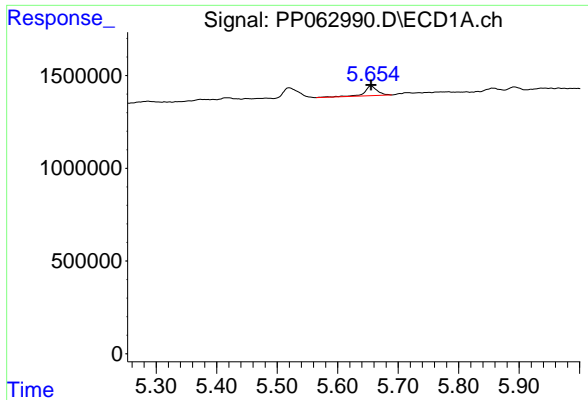
#4 AR-1016-2

R.T.: 0.000 min
 Exp R.T.: 5.593 min
 Response: 0
 Conc: N.D.



#4 AR-1016-2

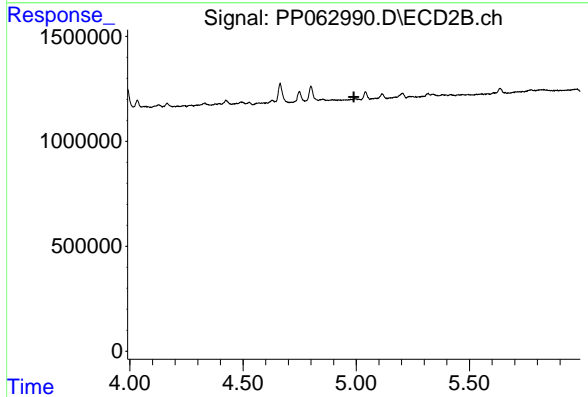
R.T.: 4.800 min
 Delta R.T.: -0.010 min
 Response: 822088
 Conc: 5.50 ng/ml



#5 AR-1016-3

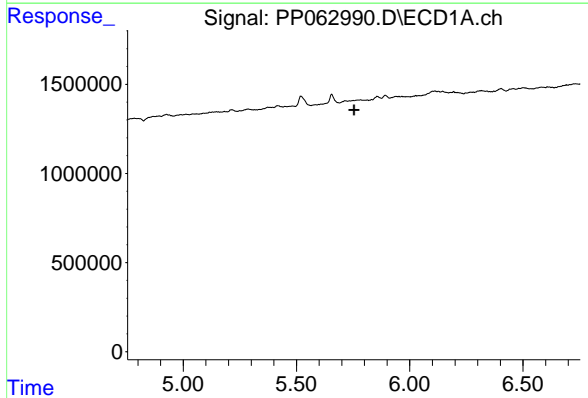
R.T.: 5.655 min
 Delta R.T.: 0.000 min
 Response: 794500
 Conc: 10.99 ng/ml

Instrument :
 ECD_P
 ClientSampleId :
 PB158470BL



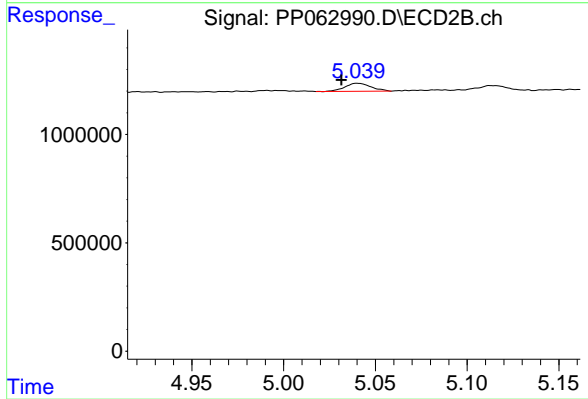
#5 AR-1016-3

R.T.: 0.000 min
 Exp R.T. : 4.990 min
 Response: 0
 Conc: N.D.



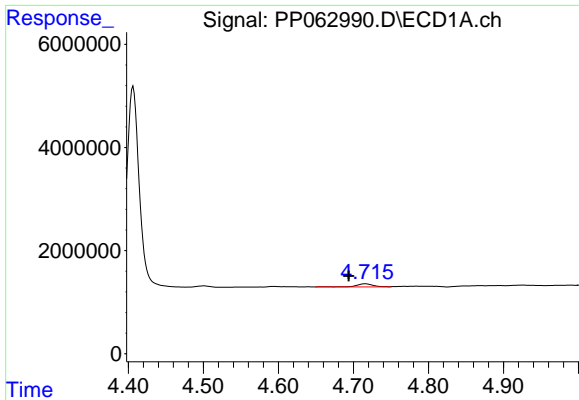
#6 AR-1016-4

R.T.: 0.000 min
 Exp R.T. : 5.754 min
 Response: 0
 Conc: N.D.



#6 AR-1016-4

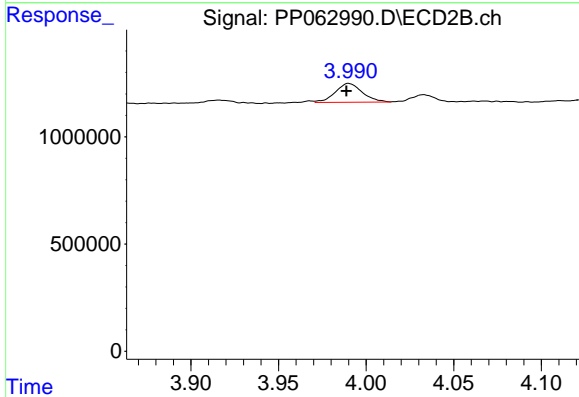
R.T.: 5.040 min
 Delta R.T.: 0.008 min
 Response: 364175
 Conc: 5.41 ng/ml



#9 AR-1221-2

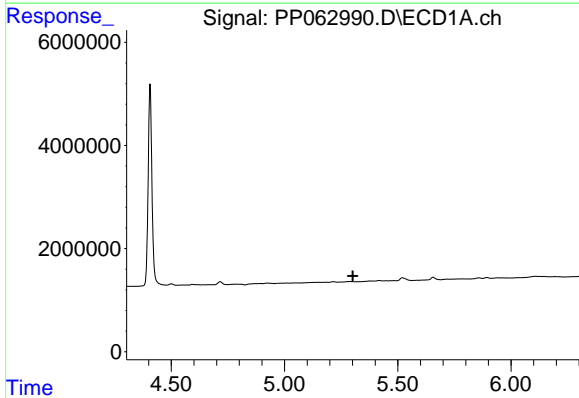
R.T.: 4.716 min
 Delta R.T.: 0.022 min
 Response: 965098
 Conc: 39.45 ng/ml

Instrument :
 ECD_P
 ClientSampleId :
 PB158470BL



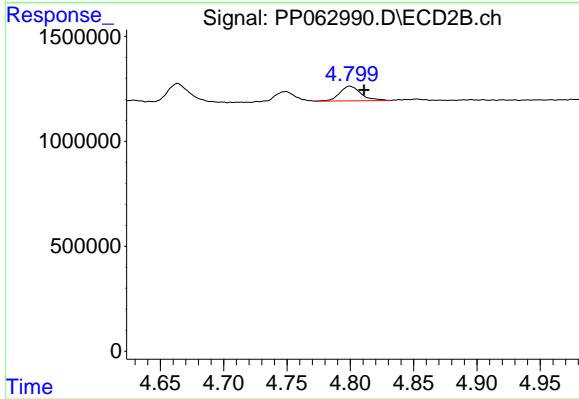
#9 AR-1221-2

R.T.: 3.990 min
 Delta R.T.: 0.001 min
 Response: 951715
 Conc: 30.79 ng/ml



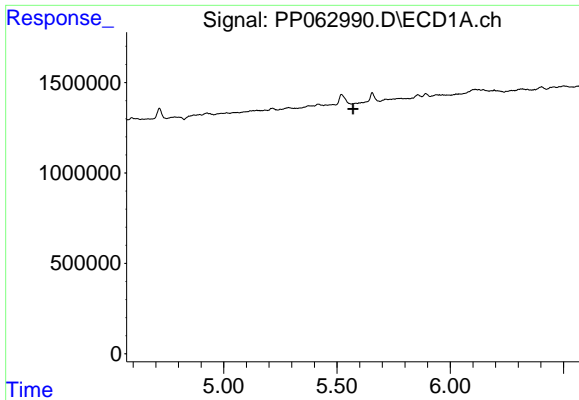
#12 AR-1232-2

R.T.: 0.000 min
 Exp R.T. : 5.302 min
 Response: 0
 Conc: N.D.



#12 AR-1232-2

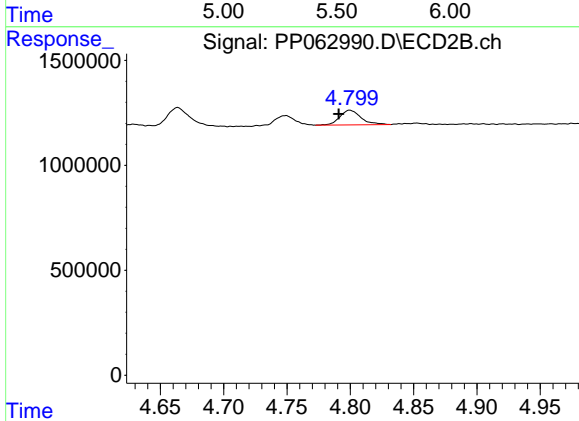
R.T.: 4.800 min
 Delta R.T.: -0.011 min
 Response: 822088
 Conc: 11.75 ng/ml



#16 AR-1242-1

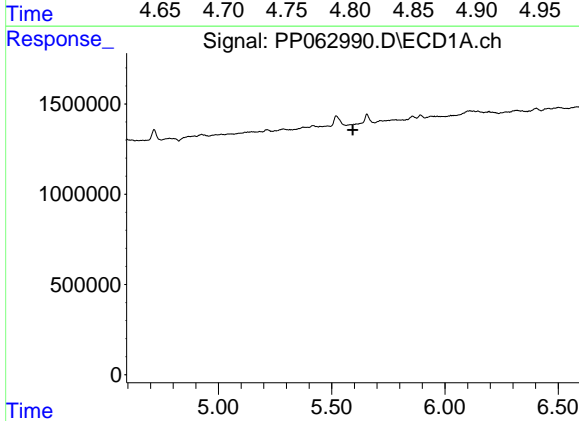
R.T.: 0.000 min
 Exp R.T.: 5.571 min
 Response: 0
 Conc: N.D.

Instrument :
 ECD_P
 ClientSampleId :
 PB158470BL



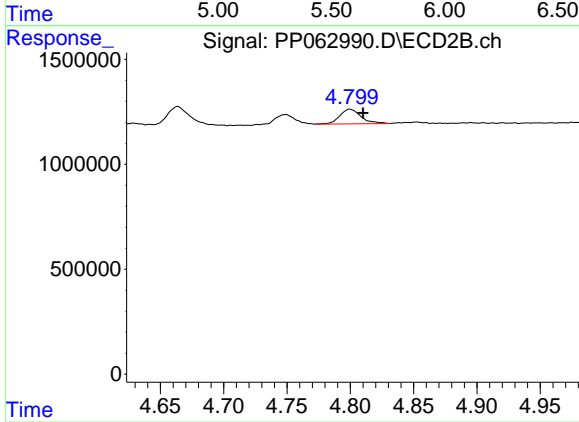
#16 AR-1242-1

R.T.: 4.800 min
 Delta R.T.: 0.009 min
 Response: 822088
 Conc: 9.43 ng/ml



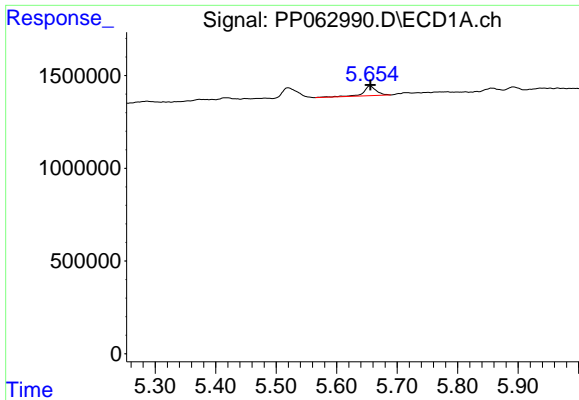
#17 AR-1242-2

R.T.: 0.000 min
 Exp R.T.: 5.593 min
 Response: 0
 Conc: N.D.



#17 AR-1242-2

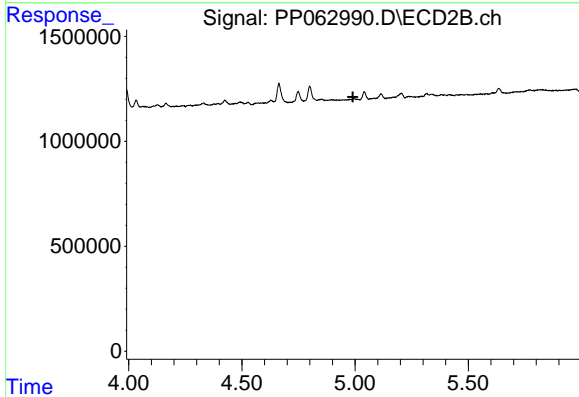
R.T.: 4.800 min
 Delta R.T.: -0.011 min
 Response: 822088
 Conc: 6.81 ng/ml



#18 AR-1242-3

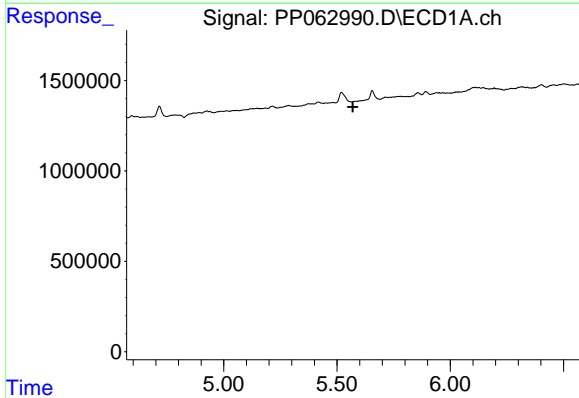
R.T.: 5.655 min
 Delta R.T.: 0.000 min
 Response: 794500
 Conc: 13.41 ng/ml

Instrument :
 ECD_P
 ClientSampleId :
 PB158470BL



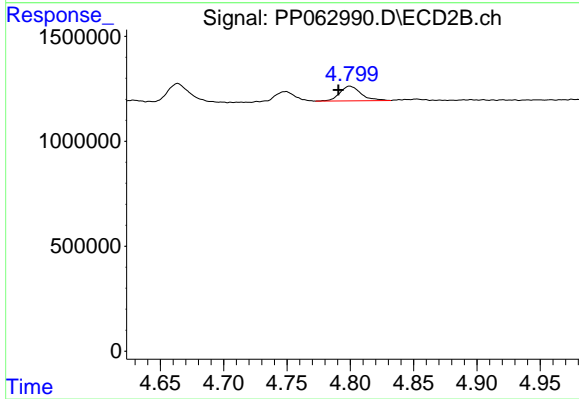
#18 AR-1242-3

R.T.: 0.000 min
 Exp R.T. : 4.990 min
 Response: 0
 Conc: N.D.



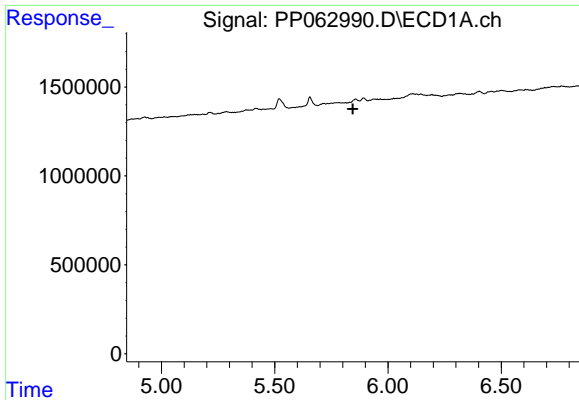
#21 AR-1248-1

R.T.: 0.000 min
 Exp R.T. : 5.570 min
 Response: 0
 Conc: N.D.



#21 AR-1248-1

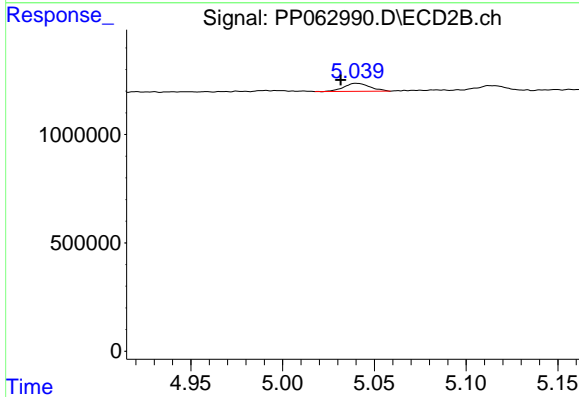
R.T.: 4.800 min
 Delta R.T.: 0.009 min
 Response: 822088
 Conc: 12.51 ng/ml



#22 AR-1248-2

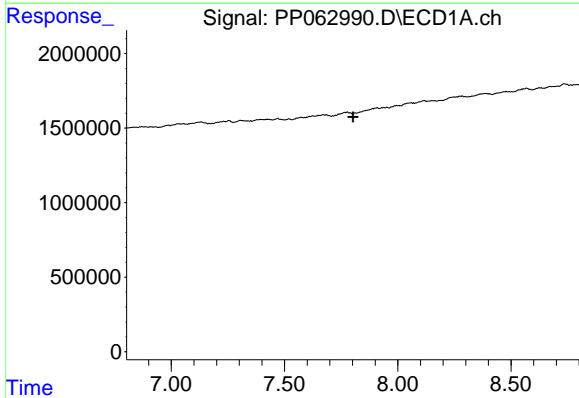
R.T.: 0.000 min
 Exp R.T.: 5.845 min
 Response: 0
 Conc: N.D.

Instrument :
 ECD_P
 ClientSampleId :
 PB158470BL



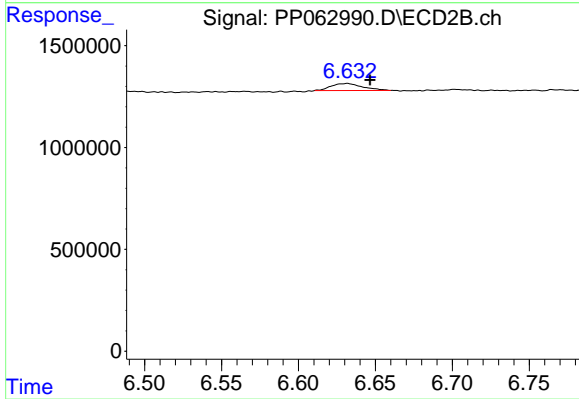
#22 AR-1248-2

R.T.: 5.040 min
 Delta R.T.: 0.008 min
 Response: 364175
 Conc: 3.74 ng/ml



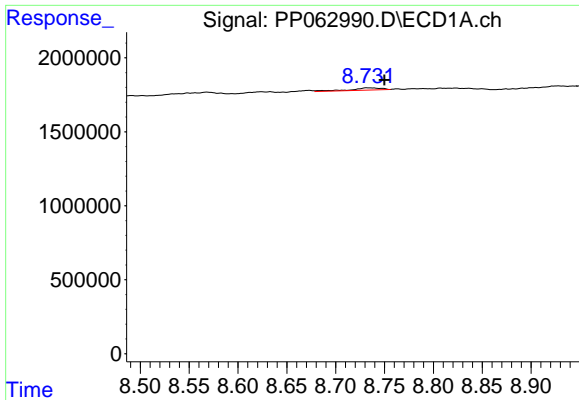
#33 AR-1260-3

R.T.: 0.000 min
 Exp R.T.: 7.803 min
 Response: 0
 Conc: N.D.



#33 AR-1260-3

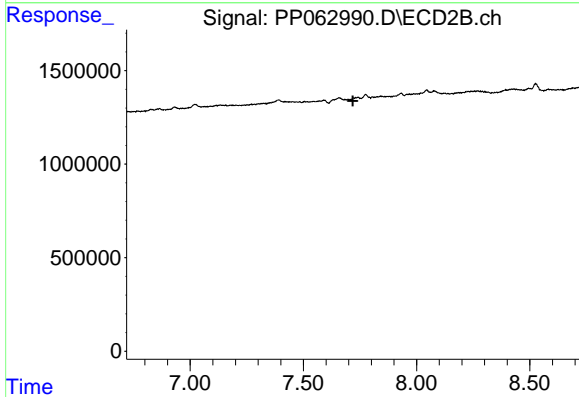
R.T.: 6.632 min
 Delta R.T.: -0.014 min
 Response: 489794
 Conc: 2.65 ng/ml



#39 AR-1262-4

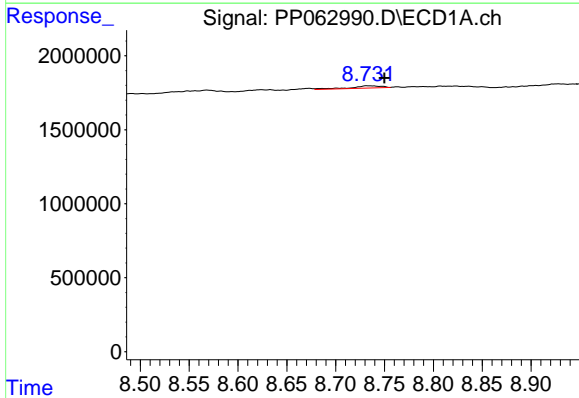
R.T.: 8.732 min
 Delta R.T.: -0.017 min
 Response: 327519
 Conc: 3.07 ng/ml

Instrument :
 ECD_P
 ClientSampleId :
 PB158470BL



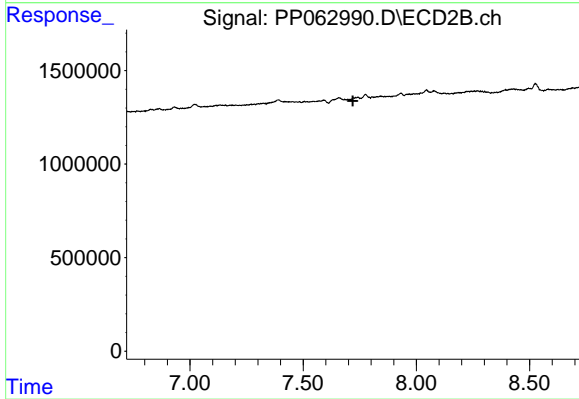
#39 AR-1262-4

R.T.: 0.000 min
 Exp R.T. : 7.719 min
 Response: 0
 Conc: N.D.



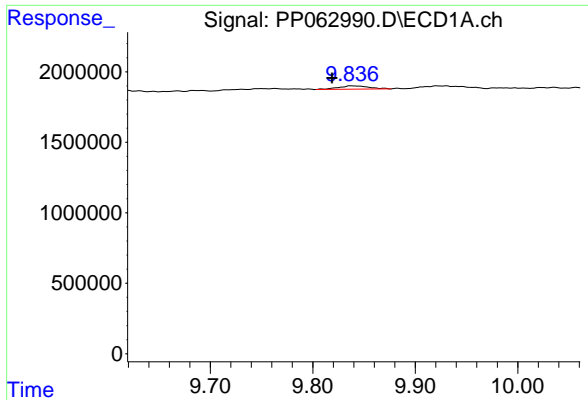
#42 AR-1268-2

R.T.: 8.732 min
 Delta R.T.: -0.017 min
 Response: 327519
 Conc: 1.64 ng/ml



#42 AR-1268-2

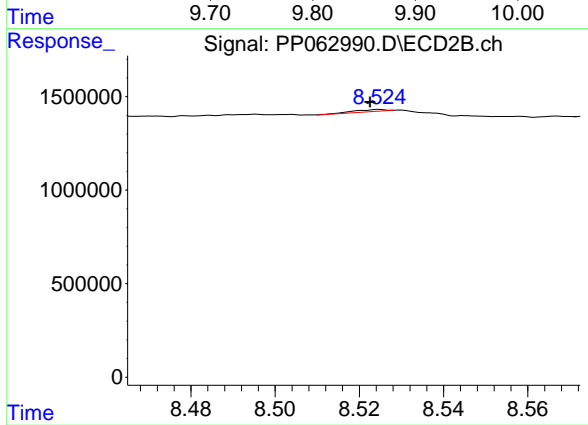
R.T.: 0.000 min
 Exp R.T. : 7.720 min
 Response: 0
 Conc: N.D.



#45 AR-1268-5

R.T.: 9.837 min
 Delta R.T.: 0.018 min
 Response: 494249
 Conc: 0.91 ng/ml

Instrument :
 ECD_P
 ClientSampleId :
 PB158470BL



#45 AR-1268-5

R.T.: 8.525 min
 Delta R.T.: 0.002 min
 Response: 55577
 Conc: 0.07 ng/ml