

Data Path : Z:\pestpcbsrv\HPCHEM1\ECD_P\Data\PP011824\
 Data File : PP063003.D
 Signal(s) : Signal #1: ECD1A.ch Signal #2: ECD2B.ch
 Acq On : 18 Jan 2024 16:52
 Operator : YP\AJ
 Sample : AR1254CCC500
 Misc :
 ALS Vial : 6 Sample Multiplier: 1

Instrument :
 ECD_P
ClientSampleId :
 AR1254CCC500

Integration File signal 1: autoint1.e
 Integration File signal 2: autoint2.e
 Quant Time: Jan 18 22:15:07 2024
 Quant Method : Z:\pestpcbsrv\HPCHEM1\ECD_P\methods\PP011024.M
 Quant Title : GC EXTRACTABLES
 QLast Update : Thu Jan 11 02:58:31 2024
 Response via : Initial Calibration
 Integrator: ChemStation

Volume Inj. : 2 µl
 Signal #1 Phase : ZB-MR2 Signal #2 Phase: ZB-MR2
 Signal #1 Info : 30Mx0.32mmx 0.50µ Signal #2 Info : 30M x 0.32mm x 0.25µm

Compound	RT#1	RT#2	Resp#1	Resp#2	ng/ml	ng/ml

System Monitoring Compounds						
1) SA Tetrachlo...	4.395	3.681	123.5E6	170.7E6	47.610	48.921
2) SA Decachlor...	10.156	8.783	82216638	108.5E6	51.989	46.496
Target Compounds						
26) L6 AR-1254-1	6.427	5.604	40686027	82430942	434.635	471.934
27) L6 AR-1254-2	6.647	5.755	59686982	71749006	427.948	473.618
28) L6 AR-1254-3	7.014	6.164	60168163	114.3E6	438.936	476.769
29) L6 AR-1254-4	7.302	6.396	40645059	67872202	453.391	498.666
30) L6 AR-1254-5	7.722	6.819	41855018	98188498	449.692	484.287

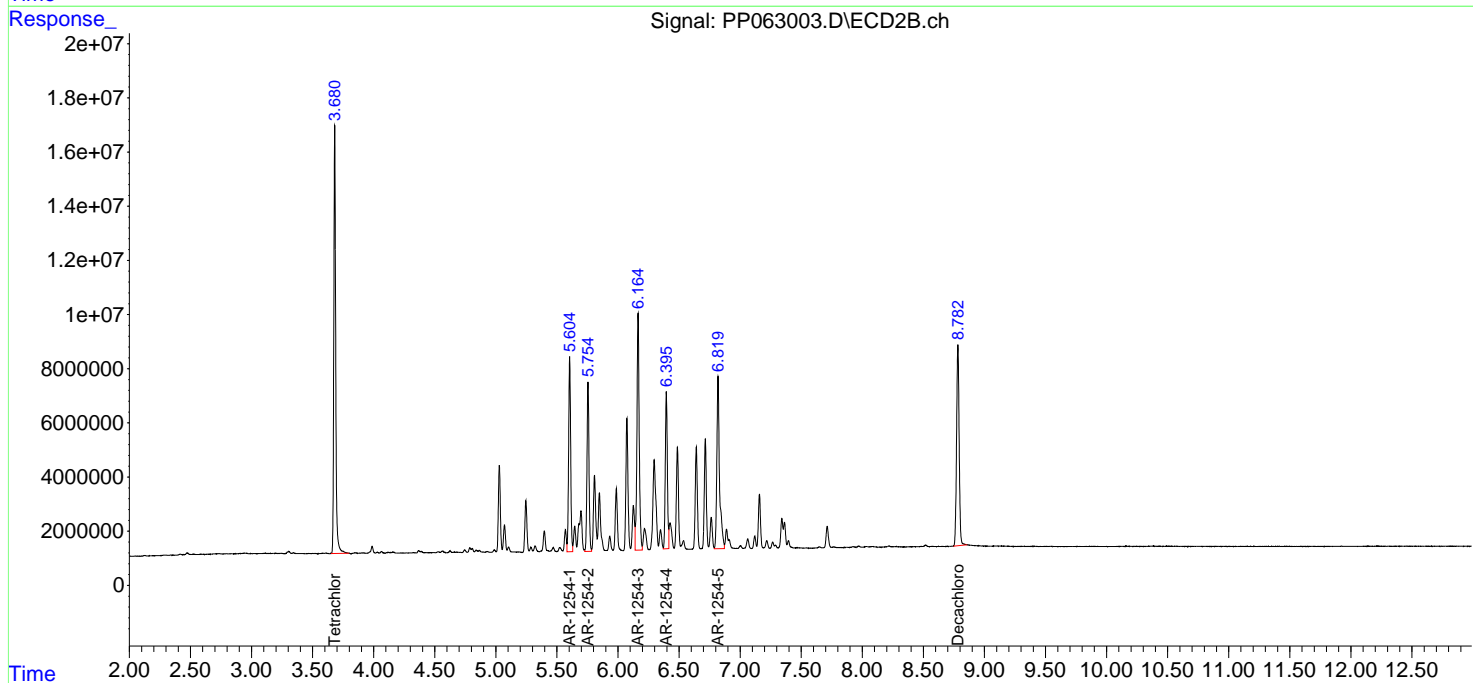
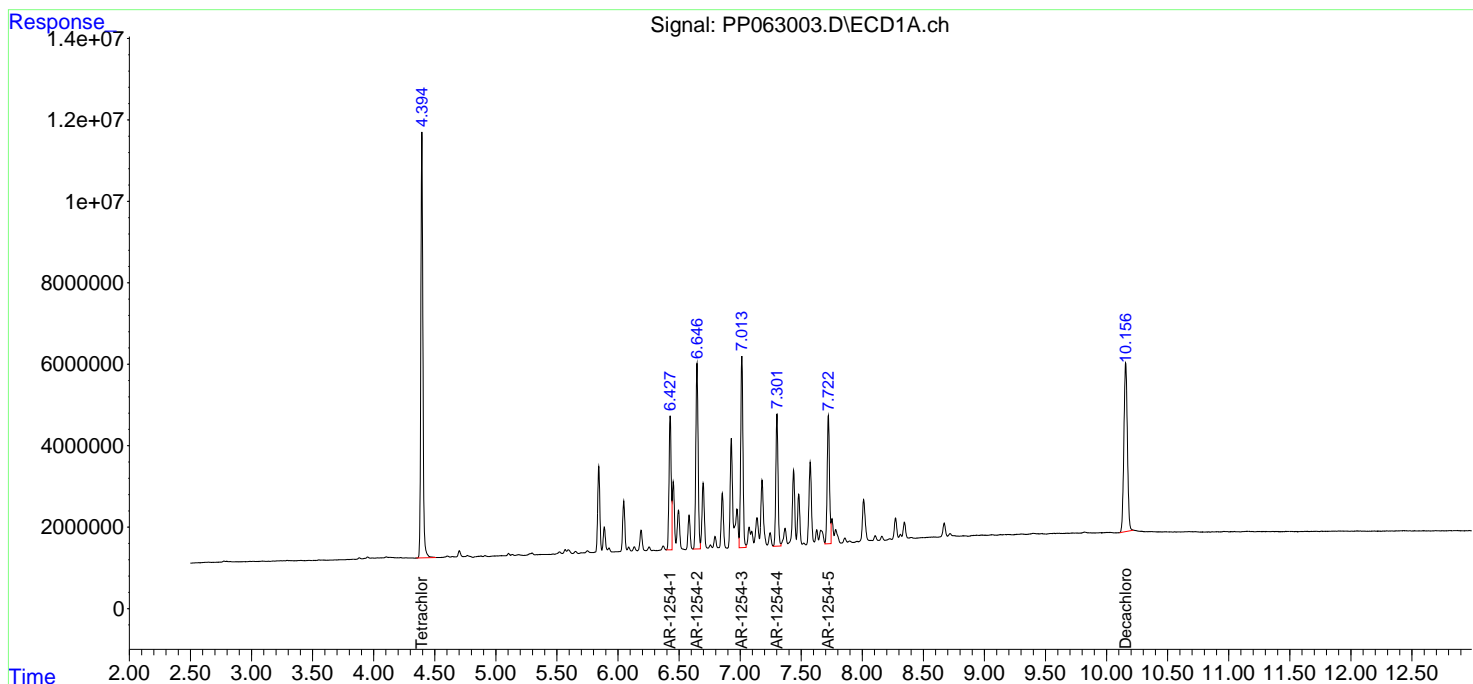
(f)=RT Delta > 1/2 Window (#)=Amounts differ by > 25% (m)=manual int.

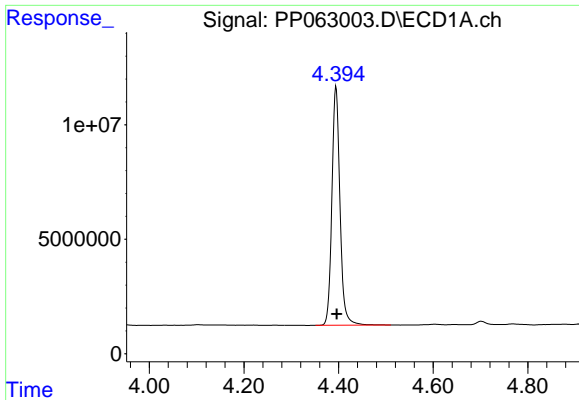
Data Path : Z:\pestpcbsrv\HPCHEM1\ECD_P\Data\PP011824\
 Data File : PP063003.D
 Signal(s) : Signal #1: ECD1A.ch Signal #2: ECD2B.ch
 Acq On : 18 Jan 2024 16:52
 Operator : YP\AJ
 Sample : AR1254CCC500
 Misc :
 ALS Vial : 6 Sample Multiplier: 1

Instrument :
 ECD_P
 ClientSampleId :
 AR1254CCC500

Integration File signal 1: autoint1.e
 Integration File signal 2: autoint2.e
 Quant Time: Jan 18 22:15:07 2024
 Quant Method : Z:\pestpcbsrv\HPCHEM1\ECD_P\methods\PP011024.M
 Quant Title : GC EXTRACTABLES
 QLast Update : Thu Jan 11 02:58:31 2024
 Response via : Initial Calibration
 Integrator: ChemStation

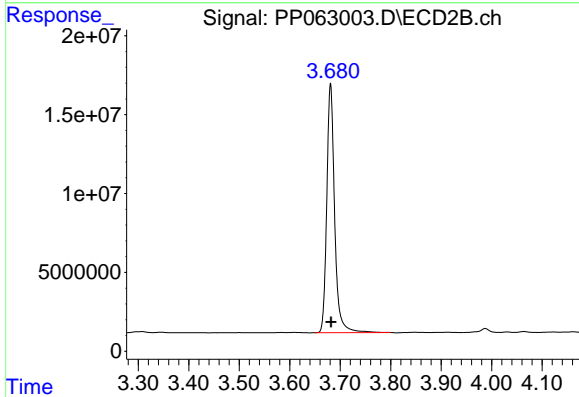
Volume Inj. : 2 µl
 Signal #1 Phase : ZB-MR1 Signal #2 Phase: ZB-MR2
 Signal #1 Info : 30Mx0.32mmx 0.50µ Signal #2 Info : 30M x 0.32mm x 0.25µm



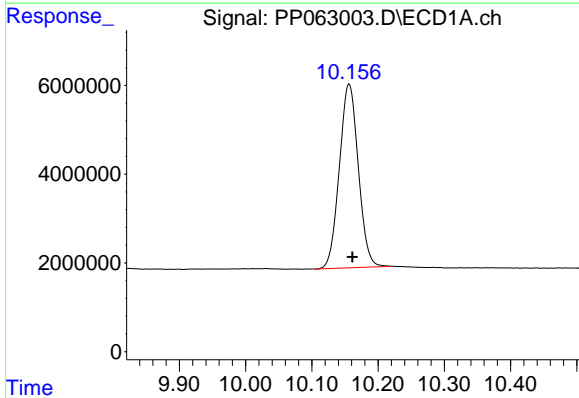


#1 Tetrachloro-m-xylene
 R.T.: 4.395 min
 Delta R.T.: -0.001 min
 Response: 123467951
 Conc: 47.61 ng/ml

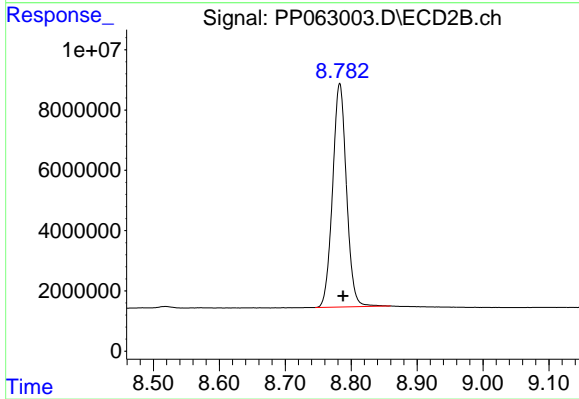
Instrument :
 ECD_P
 ClientSampleId :
 AR1254CCC500



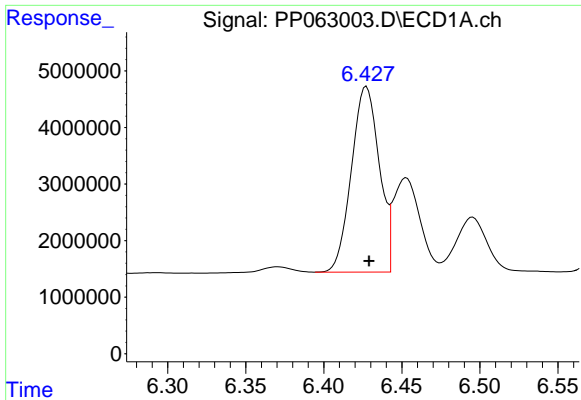
#1 Tetrachloro-m-xylene
 R.T.: 3.681 min
 Delta R.T.: 0.000 min
 Response: 170694657
 Conc: 48.92 ng/ml



#2 Decachlorobiphenyl
 R.T.: 10.156 min
 Delta R.T.: -0.005 min
 Response: 82216638
 Conc: 51.99 ng/ml



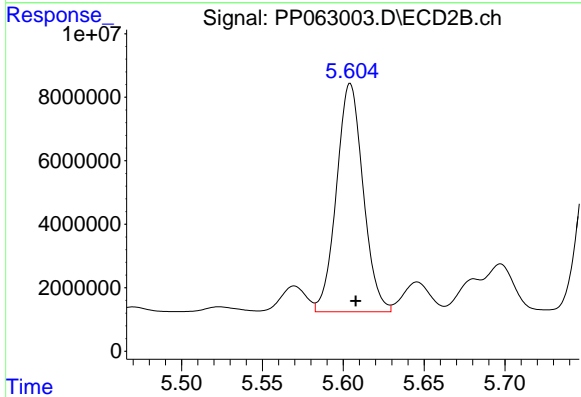
#2 Decachlorobiphenyl
 R.T.: 8.783 min
 Delta R.T.: -0.005 min
 Response: 108493141
 Conc: 46.50 ng/ml



#26 AR-1254-1

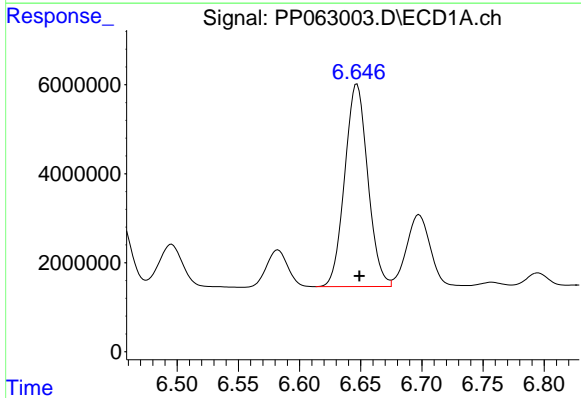
R.T.: 6.427 min
 Delta R.T.: -0.002 min
 Response: 40686027
 Conc: 434.63 ng/ml

Instrument :
 ECD_P
 ClientSampleId :
 AR1254CCC500



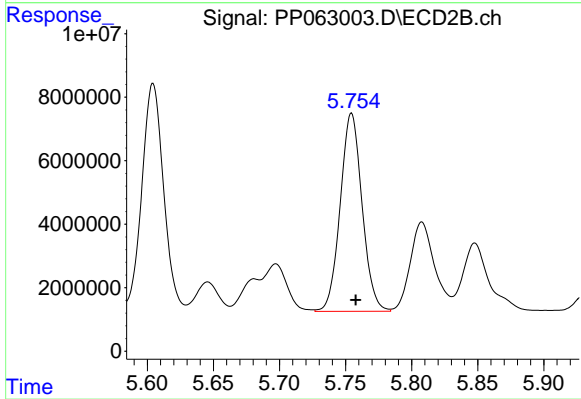
#26 AR-1254-1

R.T.: 5.604 min
 Delta R.T.: -0.003 min
 Response: 82430942
 Conc: 471.93 ng/ml



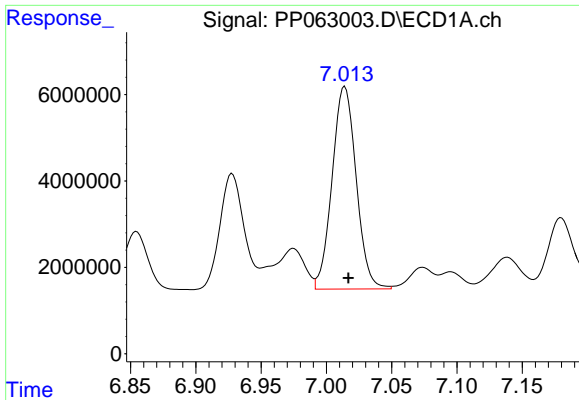
#27 AR-1254-2

R.T.: 6.647 min
 Delta R.T.: -0.002 min
 Response: 59686982
 Conc: 427.95 ng/ml



#27 AR-1254-2

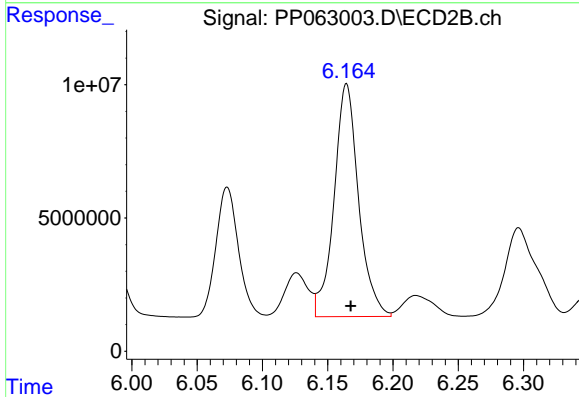
R.T.: 5.755 min
 Delta R.T.: -0.003 min
 Response: 71749006
 Conc: 473.62 ng/ml



#28 AR-1254-3

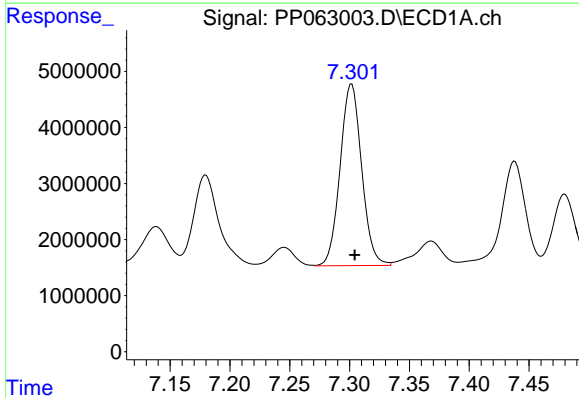
R.T.: 7.014 min
 Delta R.T.: -0.003 min
 Response: 60168163
 Conc: 438.94 ng/ml

Instrument :
 ECD_P
 ClientSampleId :
 AR1254CCC500



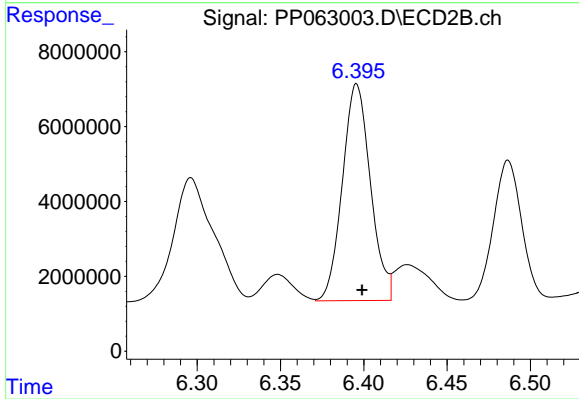
#28 AR-1254-3

R.T.: 6.164 min
 Delta R.T.: -0.003 min
 Response: 114266130
 Conc: 476.77 ng/ml



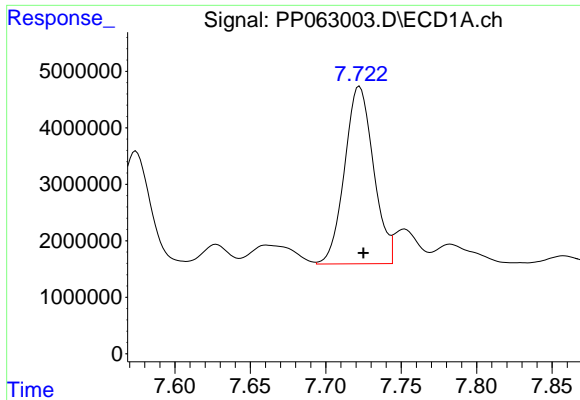
#29 AR-1254-4

R.T.: 7.302 min
 Delta R.T.: -0.002 min
 Response: 40645059
 Conc: 453.39 ng/ml



#29 AR-1254-4

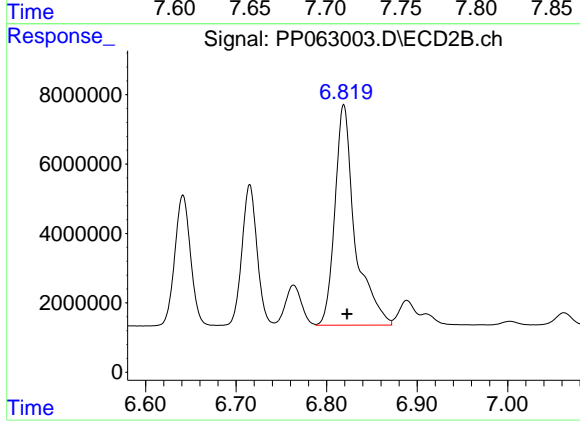
R.T.: 6.396 min
 Delta R.T.: -0.003 min
 Response: 67872202
 Conc: 498.67 ng/ml



#30 AR-1254-5

R.T.: 7.722 min
Delta R.T.: -0.003 min
Response: 41855018
Conc: 449.69 ng/ml

Instrument :
ECD_P
ClientSampleId :
AR1254CCC500



#30 AR-1254-5

R.T.: 6.819 min
Delta R.T.: -0.004 min
Response: 98188498
Conc: 484.29 ng/ml