

Data Path : Z:\pestpcbsrv\HPCHEM1\ECD\_P\Data\PP011921\  
 Data File : PP032839.D  
 Signal(s) : Signal #1: ECD1A.CH Signal #2: ECD2B.CH  
 Acq On : 19 Jan 2021 14:08  
 Operator : DD\AJ  
 Sample : PB134217BS  
 Misc :  
 ALS Vial : 15 Sample Multiplier: 1

Instrument :  
 ECD\_P  
 ClientSampleId :  
 PB134217BS

Integration File signal 1: autoint1.e  
 Integration File signal 2: autoint2.e  
 Quant Time: Jan 20 02:04:35 2021  
 Quant Method : Z:\pestpcbsrv\HPCHEM1\ECD\_P\methods\PP011421.M  
 Quant Title : GC EXTRACTABLES  
 QLast Update : Thu Jan 14 08:12:55 2021  
 Response via : Initial Calibration  
 Integrator: ChemStation 6890 Scale Mode: Small noise peaks clipped

Volume Inj. : 2 µl  
 Signal #1 Phase : ZB-MR1 Signal #2 Phase: ZB-MR2  
 Signal #1 Info : 30Mx0.32mmx 0.50µ Signal #2 Info : 30M x 0.32mm x 0.25µm

Compound	RT#1	RT#2	Resp#1	Resp#2	ng/ml	ng/ml
System Monitoring Compounds						
1) SA Tetrachlo...	4.738	4.008	1216110	814245	20.938	17.310
2) SA Decachlor...	10.572	9.285	895915	795507	22.708	21.235
Target Compounds						
3) L1 AR-1016-1	6.039	5.255	753320	574800	463.699	423.172
4) L1 AR-1016-2	6.063	5.275	1104116	843047	446.831	415.642
5) L1 AR-1016-3	6.128	5.467	679395	476707	457.335	436.296
6) L1 AR-1016-4	6.233	5.518	551107	349986	442.783	432.335
7) L1 AR-1016-5	6.547	5.746	497358	474457	438.253	440.353
8) L2 AR-1221-1	4.983	4.261	110498	56764	180.703	118.113 #
9) L2 AR-1221-2	5.081	4.361	95857	87351	211.379	239.069
10) L2 AR-1221-3	5.166	4.448	418307	329213	302.905	286.246
11) L3 AR-1232-1	5.166	4.448	418307	329213	375.164	357.077
12) L3 AR-1232-2	5.748	5.275	579892	843047	1034.929	981.373
13) L3 AR-1232-3	6.063	5.467	1104116	476707	1038.340	1054.619
14) L3 AR-1232-4	6.233	5.562	551107	438295	1024.589	1152.521
15) L3 AR-1232-5	6.333	5.746	405223	474457	1194.037	1110.371
16) L4 AR-1242-1	6.039	5.255	753320	574800	611.468	570.620
17) L4 AR-1242-2	6.063	5.275	1104116	843047	581.695	559.801
18) L4 AR-1242-3	6.128	5.467	679395	476707	592.368	577.869
19) L4 AR-1242-4	6.233	5.562	551107	438295	569.175	562.966
20) L4 AR-1242-5	7.011	6.124	71720	360550	75.003	376.241 #
21) L5 AR-1248-1	6.039	5.255	753320	574800	814.205	743.712
22) L5 AR-1248-2	6.333	5.518	405223	349986	332.464	327.617
23) L5 AR-1248-3	6.547	5.562	497358	438295	332.273	383.607
24) L5 AR-1248-4	6.971	5.746	80756	474457	49.789	345.508 #
25) L5 AR-1248-5	7.011	6.168	71720	53261	44.853	40.422
26) L6 AR-1254-1	6.942	6.124	378841	360550	228.100	176.109
27) L6 AR-1254-2	7.170	6.283	402145	339914	159.901	193.547
28) L6 AR-1254-3	7.549	6.720	222159	623110	82.454	216.964 #
29) L6 AR-1254-4	7.842	6.942	133492	63754	67.769	38.501 #
30) L6 AR-1254-5	8.269	7.369	1403577	1222711	673.035	505.488
31) L7 AR-1260-1	7.717	6.838	916169	863015	480.585	452.406
32) L7 AR-1260-2	7.981	7.036	1186471	1029047	491.255	451.562
33) L7 AR-1260-3	8.346	7.189	844804	984789	419.132	450.349
34) L7 AR-1260-4	8.574	7.671	915552	739477	444.346	404.680
35) L7 AR-1260-5	8.887	7.920	2013112	1790175	444.403	416.158
36) L8 AR-1262-1	8.346	7.463	844804	394922	284.846	351.429
37) L8 AR-1262-2	8.887	7.920	2013112	1790175	397.395	388.074
38) L8 AR-1262-3	9.198	8.204	1242501	406060	353.289	212.068 #
39) L8 AR-1262-4	9.250f	8.268	751790	1328457	272.119	375.328 #
40) L8 AR-1262-5	9.884	8.767	500974	413511	276.116	261.406
41) L9 AR-1268-1	9.198	8.204	1242501	406060	187.679	72.015 #

Data Path : Z:\pestpcbsrv\HPCHEM1\ECD\_P\Data\PP011921\  
 Data File : PP032839.D  
 Signal(s) : Signal #1: ECD1A.CH Signal #2: ECD2B.CH  
 Acq On : 19 Jan 2021 14:08  
 Operator : DD\AJ  
 Sample : PB134217BS  
 Misc :  
 ALS Vial : 15 Sample Multiplier: 1

Instrument :  
 ECD\_P  
 ClientSampleId :  
 PB134217BS

Integration File signal 1: autoint1.e  
 Integration File signal 2: autoint2.e  
 Quant Time: Jan 20 02:04:35 2021  
 Quant Method : Z:\pestpcbsrv\HPCHEM1\ECD\_P\methods\PP011421.M  
 Quant Title : GC EXTRACTABLES  
 QLast Update : Thu Jan 14 08:12:55 2021  
 Response via : Initial Calibration  
 Integrator: ChemStation 6890 Scale Mode: Small noise peaks clipped

Volume Inj. : 2 µl  
 Signal #1 Phase : ZB-MR1 Signal #2 Phase: ZB-MR2  
 Signal #1 Info : 30Mx0.32mmx 0.50µ Signal #2 Info : 30M x 0.32mm x 0.25µm

	Compound	RT#1	RT#2	Resp#1	Resp#2	ng/ml	ng/ml
42)	L9 AR-1268-2	9.250f	8.268	751790	1328457	124.800	245.052 #
43)	L9 AR-1268-3	0.000	8.474	0	29775	N.D.	6.271 #
44)	L9 AR-1268-4	9.884	8.767	500974	413511	244.277	228.627
45)	L9 AR-1268-5	10.266	9.046	203615	147774	13.470	10.207

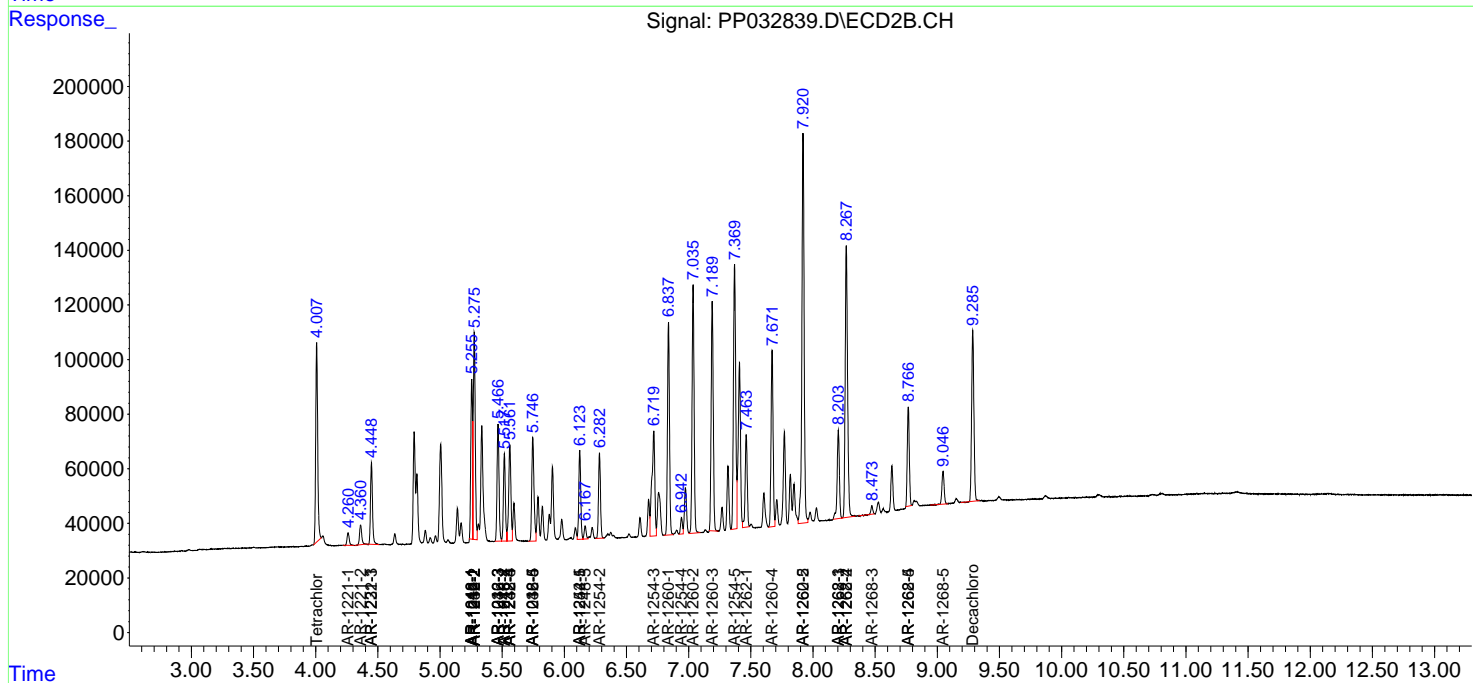
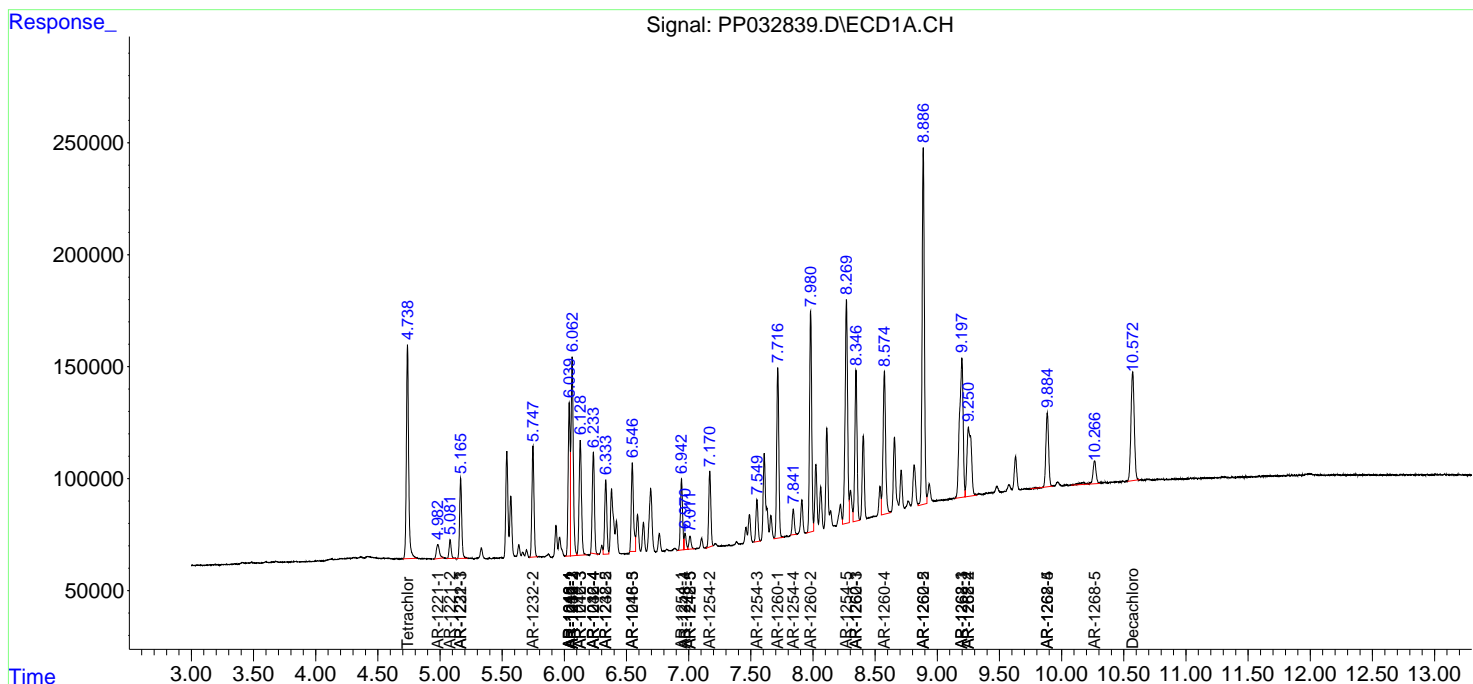
(f)=RT Delta > 1/2 Window (#)=Amounts differ by > 25% (m)=manual int.

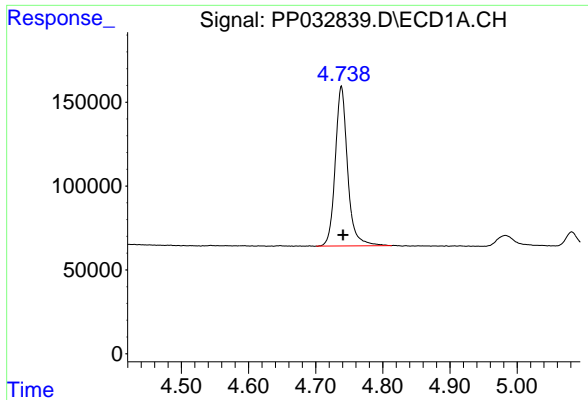
Data Path : Z:\pestpcbsrv\HPCHEM1\ECD\_P\Data\PP011921\  
 Data File : PP032839.D  
 Signal(s) : Signal #1: ECD1A.CH Signal #2: ECD2B.CH  
 Acq On : 19 Jan 2021 14:08  
 Operator : DD\AJ  
 Sample : PB134217BS  
 Misc :  
 ALS Vial : 15 Sample Multiplier: 1

Instrument :  
 ECD\_P  
 ClientSampled :  
 PB134217BS

Integration File signal 1: autoint1.e  
 Integration File signal 2: autoint2.e  
 Quant Time: Jan 20 02:04:35 2021  
 Quant Method : Z:\pestpcbsrv\HPCHEM1\ECD\_P\methods\PP011421.M  
 Quant Title : GC EXTRACTABLES  
 QLast Update : Thu Jan 14 08:12:55 2021  
 Response via : Initial Calibration  
 Integrator: ChemStation 6890 Scale Mode: Small noise peaks clipped

Volume Inj. : 2 µl  
 Signal #1 Phase : ZB-MR1 Signal #2 Phase: ZB-MR2  
 Signal #1 Info : 30Mx0.32mmx 0.50µ Signal #2 Info : 30M x 0.32mm x 0.25µm

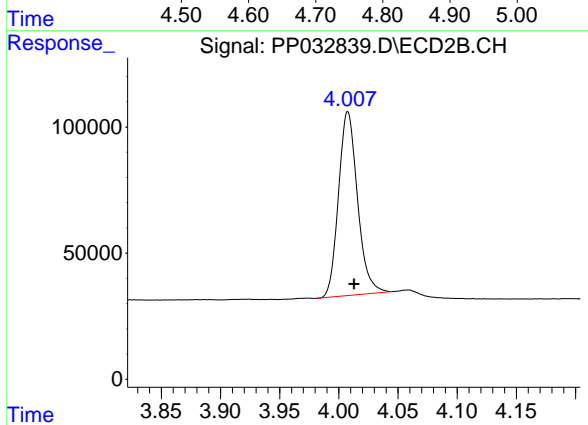




#1 Tetrachloro-m-xylene

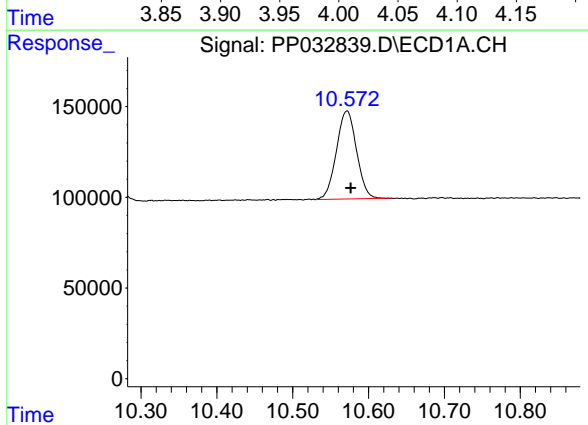
R.T.: 4.738 min  
 Delta R.T.: -0.003 min  
 Response: 1216110  
 Conc: 20.94 ng/ml

Instrument :  
 ECD\_P  
 ClientSampleId :  
 PB134217BS



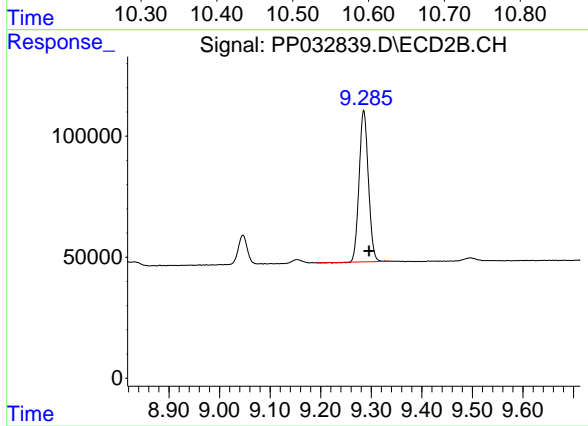
#1 Tetrachloro-m-xylene

R.T.: 4.008 min  
 Delta R.T.: -0.005 min  
 Response: 814245  
 Conc: 17.31 ng/ml



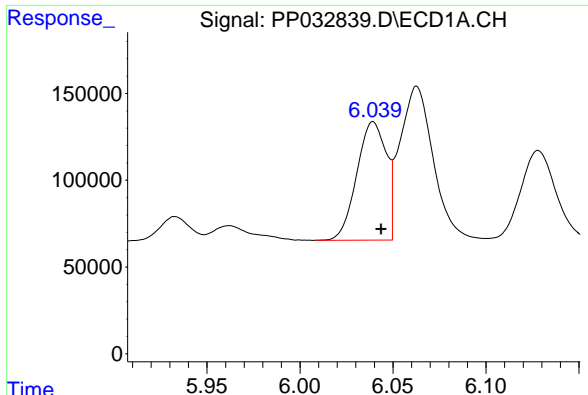
#2 Decachlorobiphenyl

R.T.: 10.572 min  
 Delta R.T.: -0.005 min  
 Response: 895915  
 Conc: 22.71 ng/ml



#2 Decachlorobiphenyl

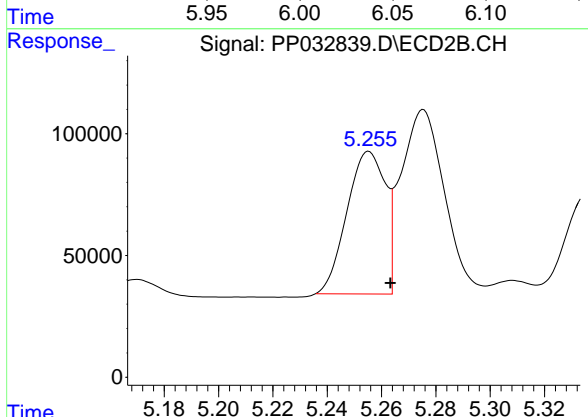
R.T.: 9.285 min  
 Delta R.T.: -0.011 min  
 Response: 795507  
 Conc: 21.23 ng/ml



#3 AR-1016-1

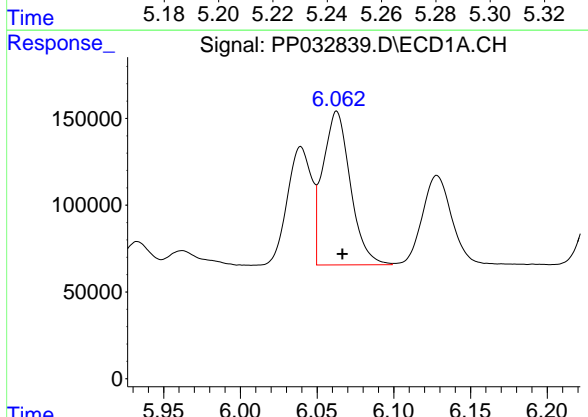
R.T.: 6.039 min  
 Delta R.T.: -0.004 min  
 Response: 753320  
 Conc: 463.70 ng/ml

Instrument :  
 ECD\_P  
 ClientSampled :  
 PB134217BS



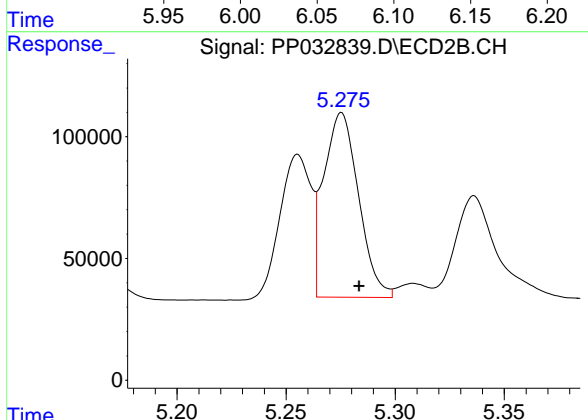
#3 AR-1016-1

R.T.: 5.255 min  
 Delta R.T.: -0.008 min  
 Response: 574800  
 Conc: 423.17 ng/ml



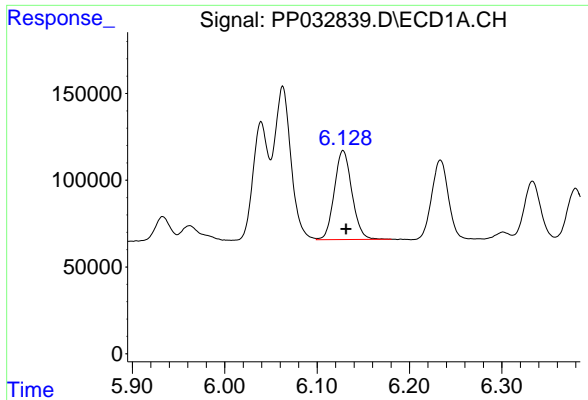
#4 AR-1016-2

R.T.: 6.063 min  
 Delta R.T.: -0.004 min  
 Response: 1104116  
 Conc: 446.83 ng/ml



#4 AR-1016-2

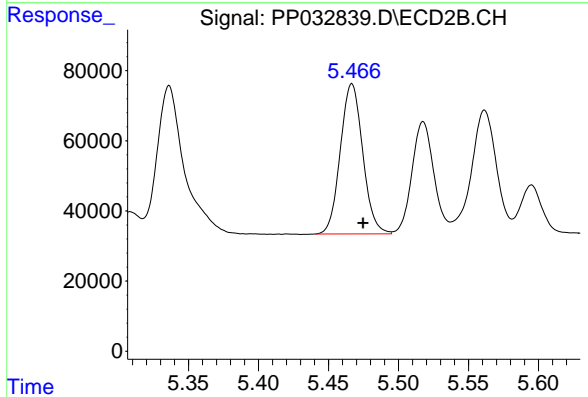
R.T.: 5.275 min  
 Delta R.T.: -0.008 min  
 Response: 843047  
 Conc: 415.64 ng/ml



#5 AR-1016-3

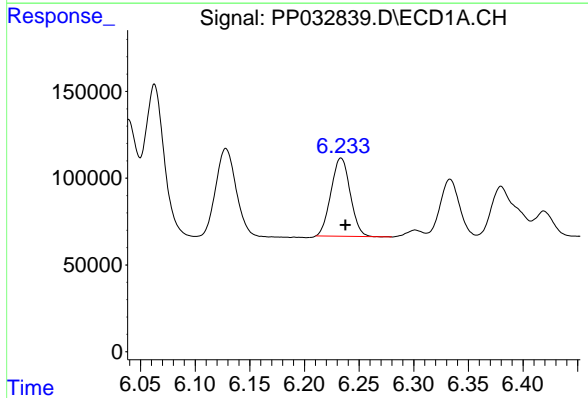
R.T.: 6.128 min  
 Delta R.T.: -0.003 min  
 Response: 679395  
 Conc: 457.34 ng/ml

Instrument :  
 ECD\_P  
 ClientSampleId :  
 PB134217BS



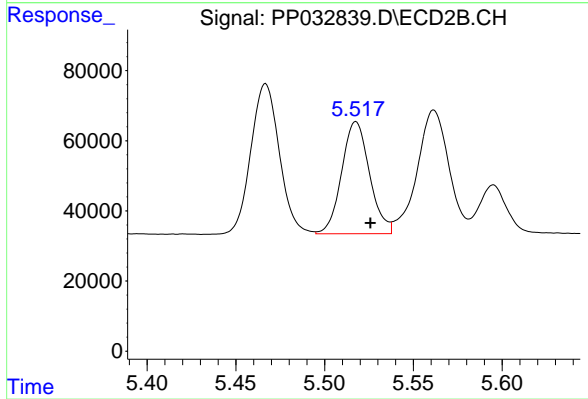
#5 AR-1016-3

R.T.: 5.467 min  
 Delta R.T.: -0.008 min  
 Response: 476707  
 Conc: 436.30 ng/ml



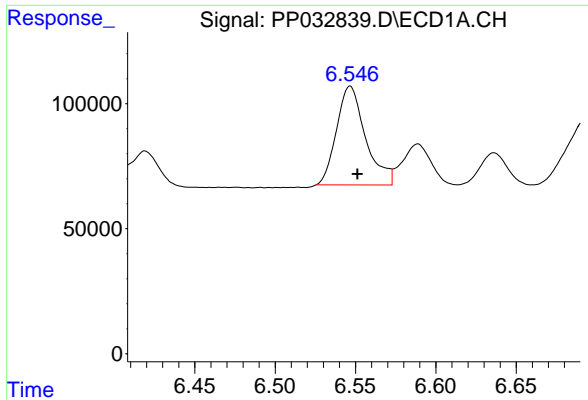
#6 AR-1016-4

R.T.: 6.233 min  
 Delta R.T.: -0.004 min  
 Response: 551107  
 Conc: 442.78 ng/ml



#6 AR-1016-4

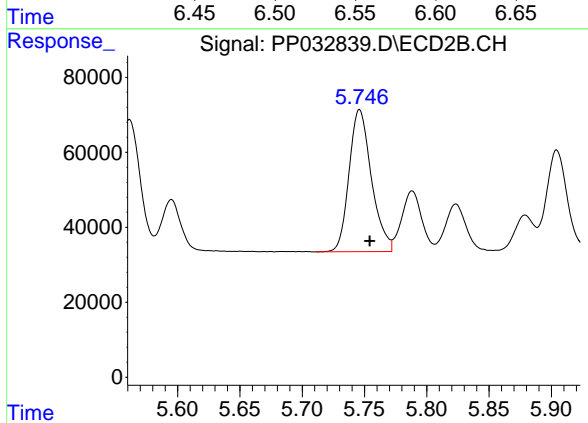
R.T.: 5.518 min  
 Delta R.T.: -0.008 min  
 Response: 349986  
 Conc: 432.33 ng/ml



#7 AR-1016-5

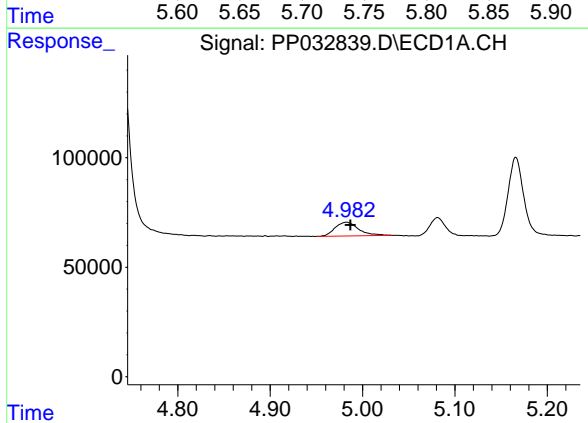
R.T.: 6.547 min  
 Delta R.T.: -0.004 min  
 Response: 497358  
 Conc: 438.25 ng/ml

Instrument :  
 ECD\_P  
 ClientSampleId :  
 PB134217BS



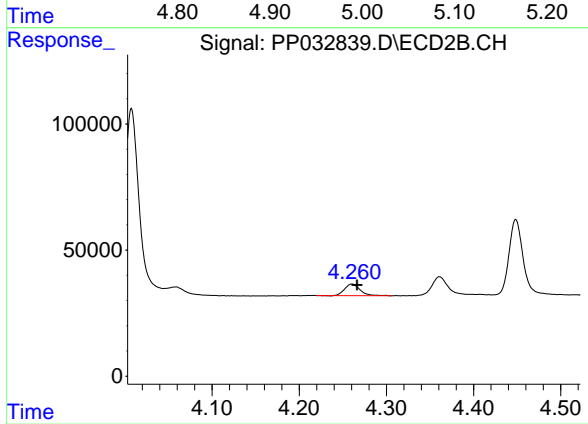
#7 AR-1016-5

R.T.: 5.746 min  
 Delta R.T.: -0.008 min  
 Response: 474457  
 Conc: 440.35 ng/ml



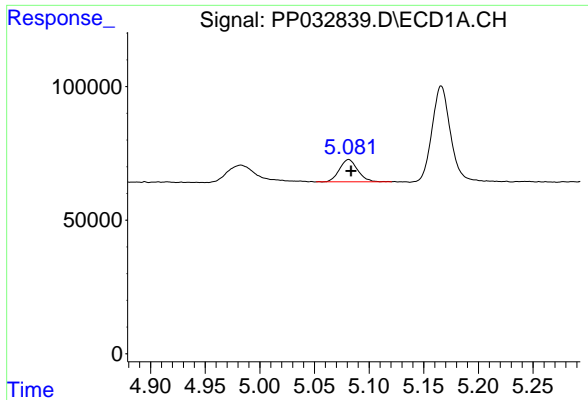
#8 AR-1221-1

R.T.: 4.983 min  
 Delta R.T.: -0.004 min  
 Response: 110498  
 Conc: 180.70 ng/ml



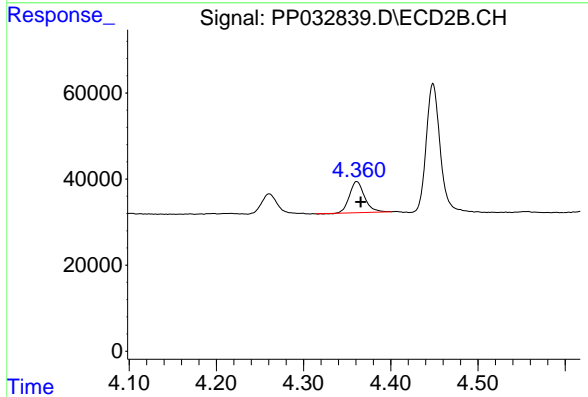
#8 AR-1221-1

R.T.: 4.261 min  
 Delta R.T.: -0.006 min  
 Response: 56764  
 Conc: 118.11 ng/ml

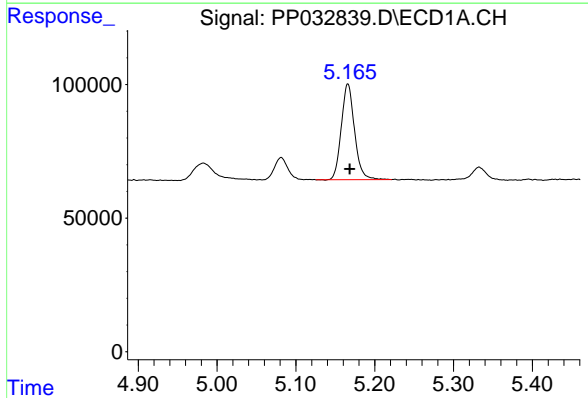


#9 AR-1221-2  
 R.T.: 5.081 min  
 Delta R.T.: -0.002 min  
 Response: 95857  
 Conc: 211.38 ng/ml

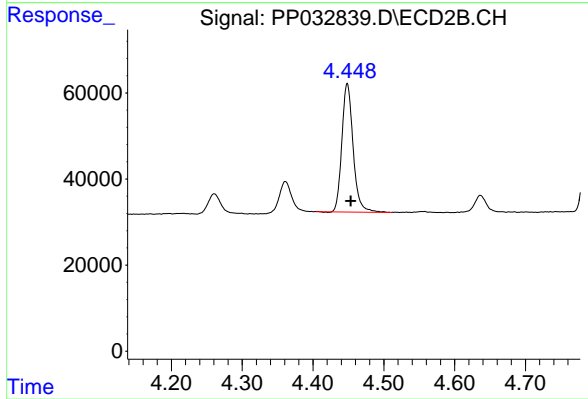
Instrument :  
 ECD\_P  
 ClientSampleId :  
 PB134217BS



#9 AR-1221-2  
 R.T.: 4.361 min  
 Delta R.T.: -0.005 min  
 Response: 87351  
 Conc: 239.07 ng/ml

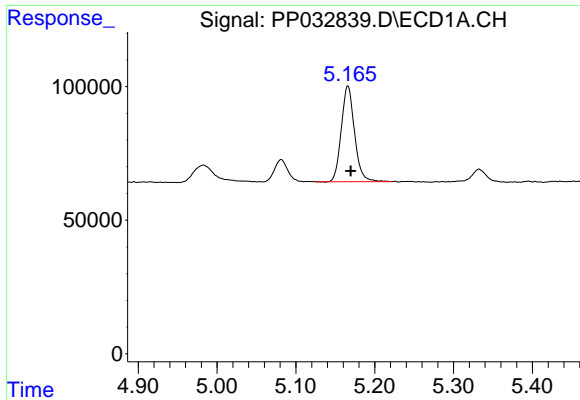


#10 AR-1221-3  
 R.T.: 5.166 min  
 Delta R.T.: -0.002 min  
 Response: 418307  
 Conc: 302.91 ng/ml



#10 AR-1221-3  
 R.T.: 4.448 min  
 Delta R.T.: -0.005 min  
 Response: 329213  
 Conc: 286.25 ng/ml

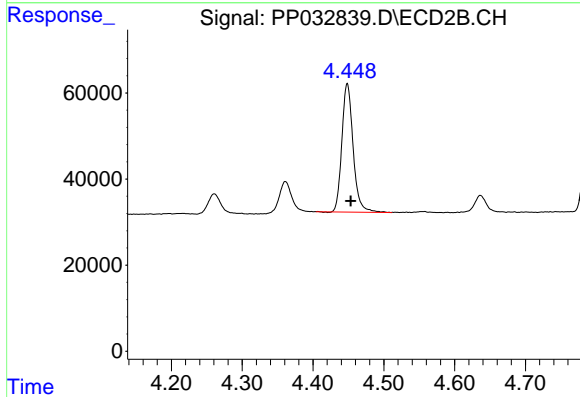




#11 AR-1232-1

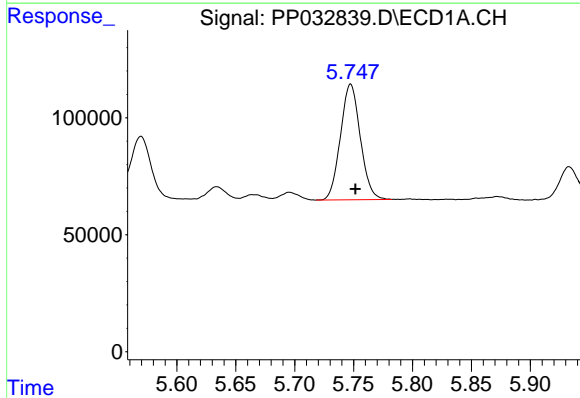
R.T.: 5.166 min  
 Delta R.T.: -0.004 min  
 Response: 418307  
 Conc: 375.16 ng/ml

Instrument :  
 ECD\_P  
 ClientSampleId :  
 PB134217BS



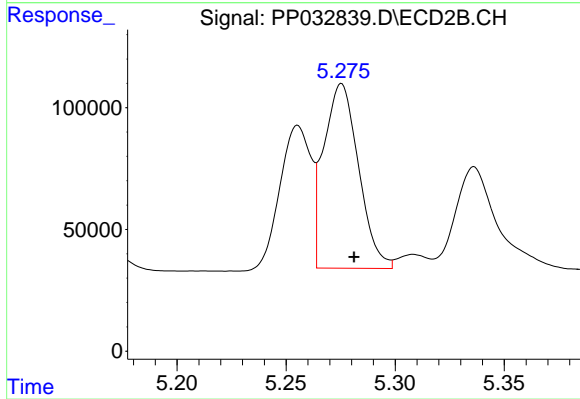
#11 AR-1232-1

R.T.: 4.448 min  
 Delta R.T.: -0.005 min  
 Response: 329213  
 Conc: 357.08 ng/ml



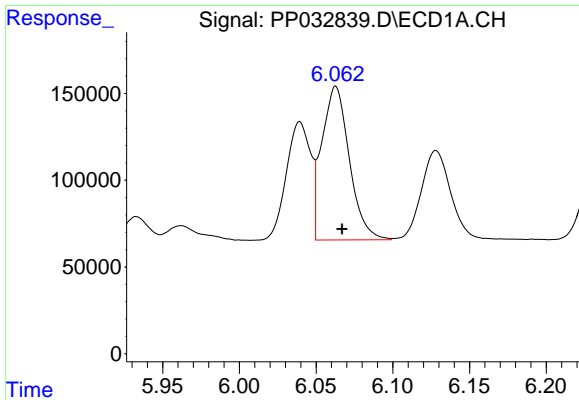
#12 AR-1232-2

R.T.: 5.748 min  
 Delta R.T.: -0.004 min  
 Response: 579892  
 Conc: 1034.93 ng/ml



#12 AR-1232-2

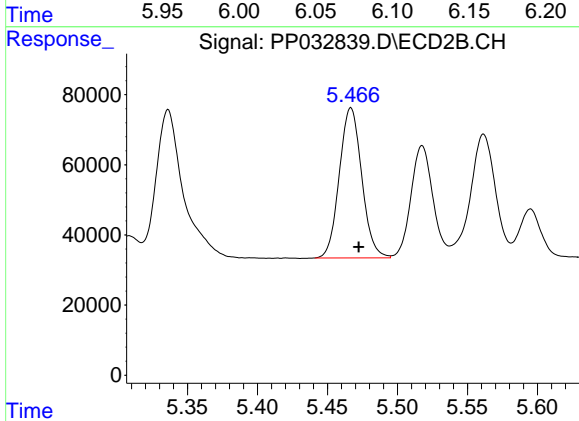
R.T.: 5.275 min  
 Delta R.T.: -0.006 min  
 Response: 843047  
 Conc: 981.37 ng/ml



#13 AR-1232-3

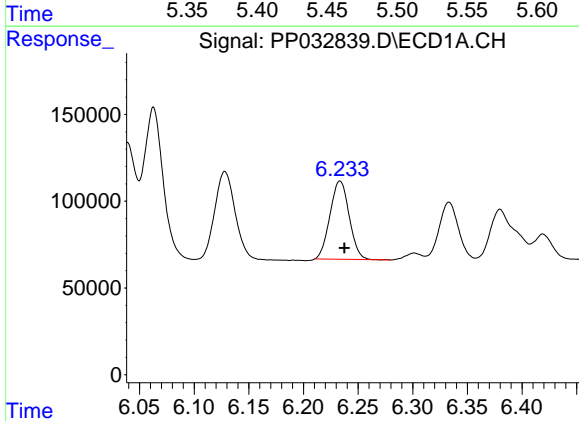
R.T.: 6.063 min  
 Delta R.T.: -0.004 min  
 Response: 1104116  
 Conc: 1038.34 ng/ml

Instrument :  
 ECD\_P  
 ClientSampleId :  
 PB134217BS



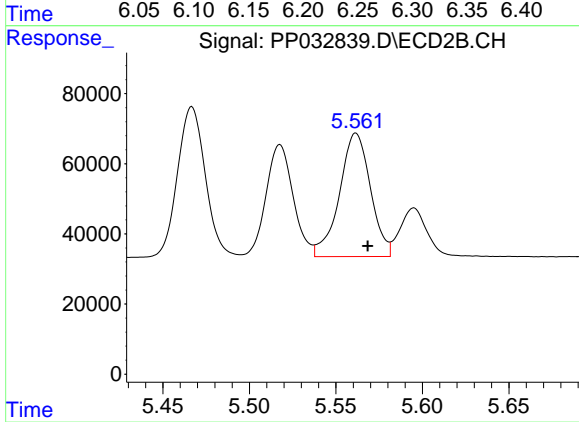
#13 AR-1232-3

R.T.: 5.467 min  
 Delta R.T.: -0.006 min  
 Response: 476707  
 Conc: 1054.62 ng/ml



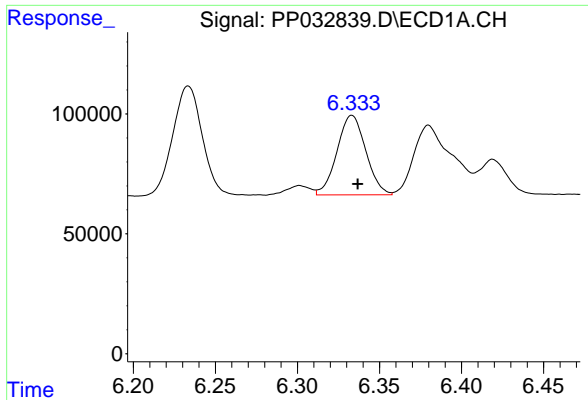
#14 AR-1232-4

R.T.: 6.233 min  
 Delta R.T.: -0.004 min  
 Response: 551107  
 Conc: 1024.59 ng/ml



#14 AR-1232-4

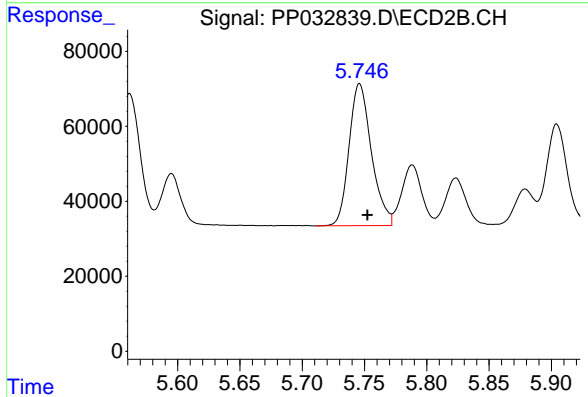
R.T.: 5.562 min  
 Delta R.T.: -0.007 min  
 Response: 438295  
 Conc: 1152.52 ng/ml



#15 AR-1232-5

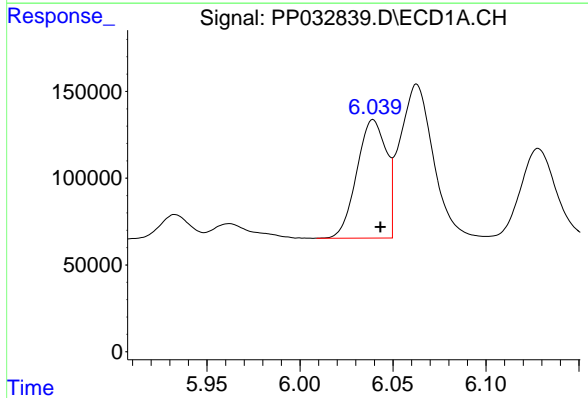
R.T.: 6.333 min  
 Delta R.T.: -0.004 min  
 Response: 405223  
 Conc: 1194.04 ng/ml

Instrument :  
 ECD\_P  
 ClientSampleId :  
 PB134217BS



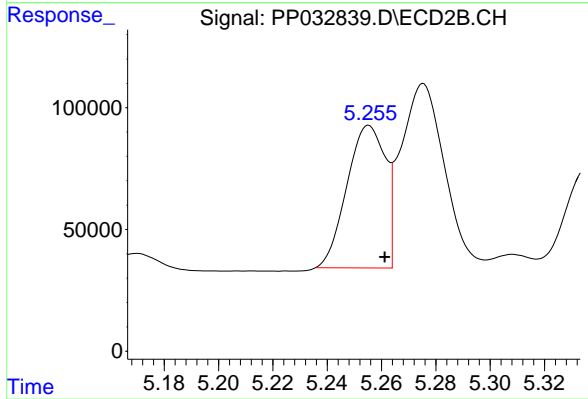
#15 AR-1232-5

R.T.: 5.746 min  
 Delta R.T.: -0.006 min  
 Response: 474457  
 Conc: 1110.37 ng/ml



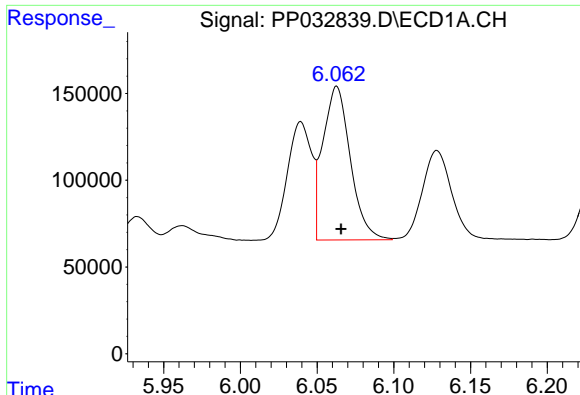
#16 AR-1242-1

R.T.: 6.039 min  
 Delta R.T.: -0.004 min  
 Response: 753320  
 Conc: 611.47 ng/ml



#16 AR-1242-1

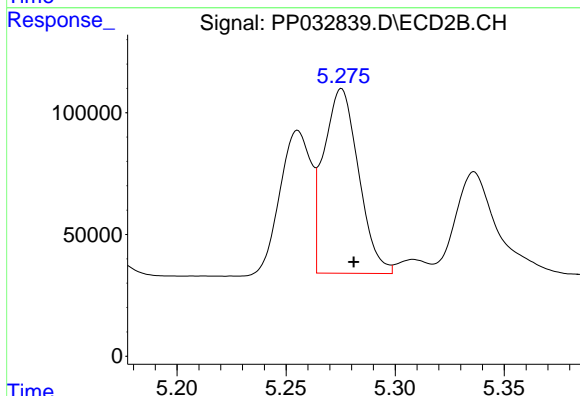
R.T.: 5.255 min  
 Delta R.T.: -0.006 min  
 Response: 574800  
 Conc: 570.62 ng/ml



#17 AR-1242-2

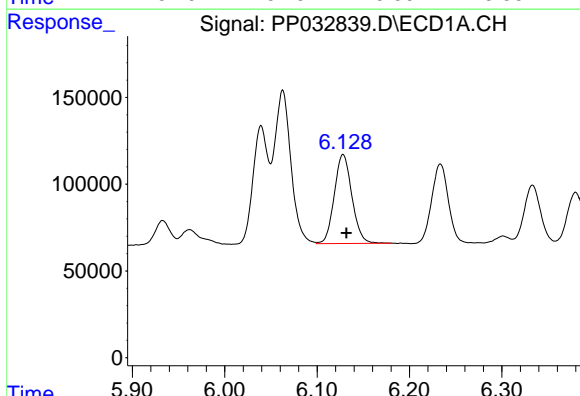
R.T.: 6.063 min  
 Delta R.T.: -0.003 min  
 Response: 1104116  
 Conc: 581.69 ng/ml

Instrument :  
 ECD\_P  
 ClientSampleId :  
 PB134217BS



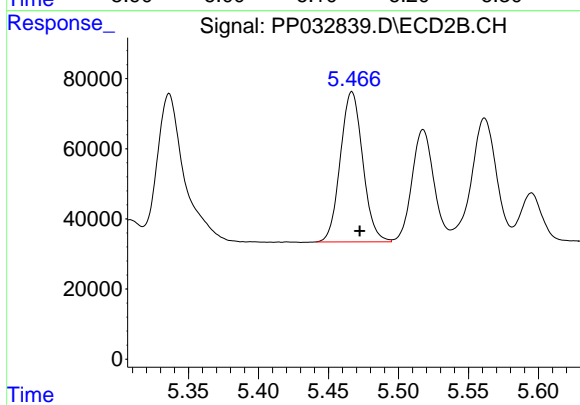
#17 AR-1242-2

R.T.: 5.275 min  
 Delta R.T.: -0.006 min  
 Response: 843047  
 Conc: 559.80 ng/ml



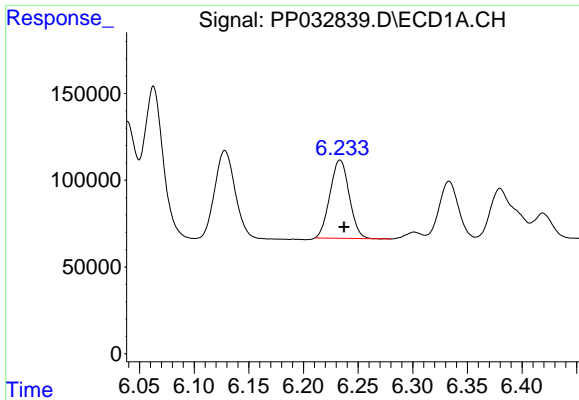
#18 AR-1242-3

R.T.: 6.128 min  
 Delta R.T.: -0.004 min  
 Response: 679395  
 Conc: 592.37 ng/ml



#18 AR-1242-3

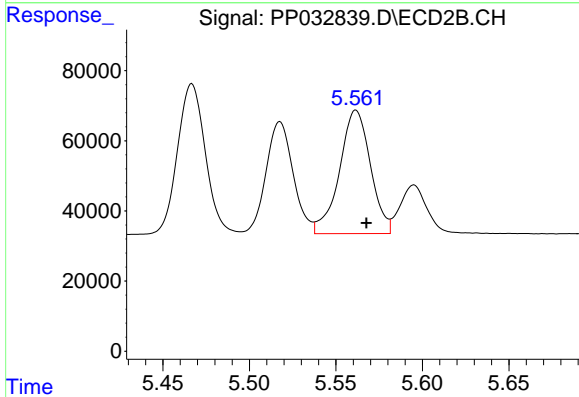
R.T.: 5.467 min  
 Delta R.T.: -0.006 min  
 Response: 476707  
 Conc: 577.87 ng/ml



#19 AR-1242-4

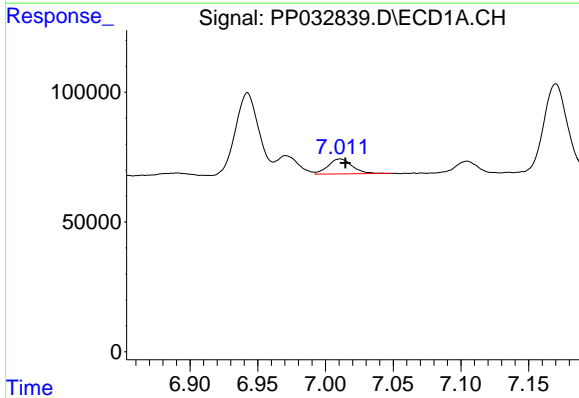
R.T.: 6.233 min  
 Delta R.T.: -0.004 min  
 Response: 551107  
 Conc: 569.17 ng/ml

Instrument :  
 ECD\_P  
 ClientSampleId :  
 PB134217BS



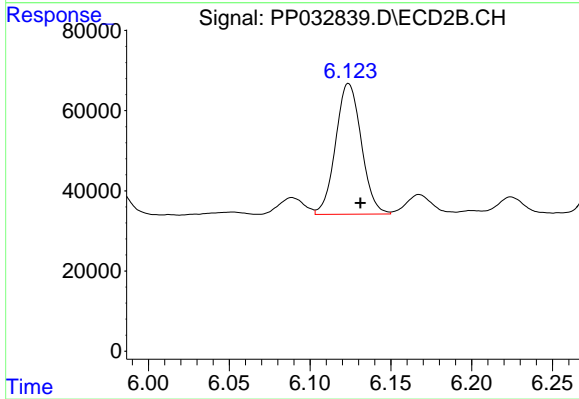
#19 AR-1242-4

R.T.: 5.562 min  
 Delta R.T.: -0.006 min  
 Response: 438295  
 Conc: 562.97 ng/ml



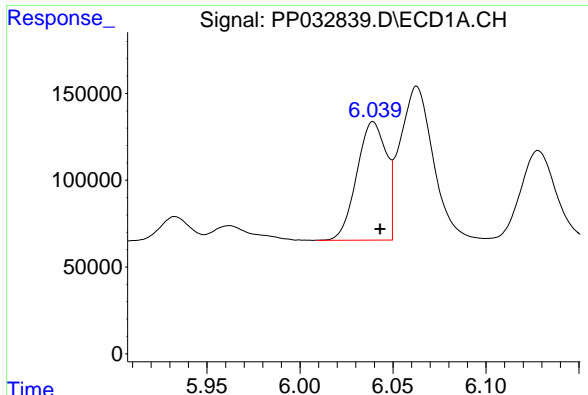
#20 AR-1242-5

R.T.: 7.011 min  
 Delta R.T.: -0.004 min  
 Response: 71720  
 Conc: 75.00 ng/ml



#20 AR-1242-5

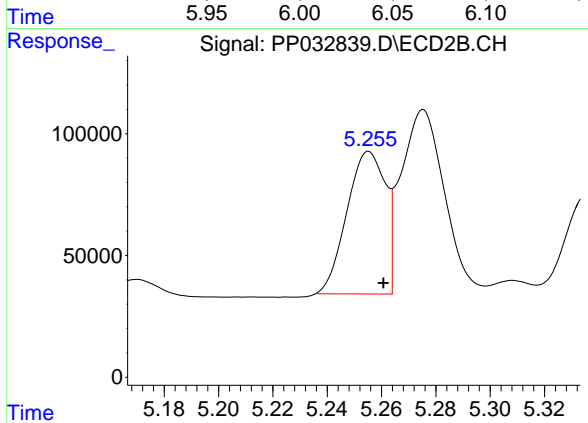
R.T.: 6.124 min  
 Delta R.T.: -0.007 min  
 Response: 360550  
 Conc: 376.24 ng/ml



#21 AR-1248-1

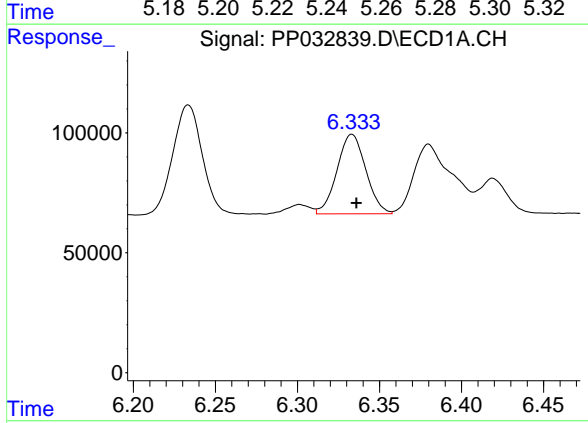
R.T.: 6.039 min  
 Delta R.T.: -0.004 min  
 Response: 753320  
 Conc: 814.21 ng/ml

Instrument :  
 ECD\_P  
 ClientSampleId :  
 PB134217BS



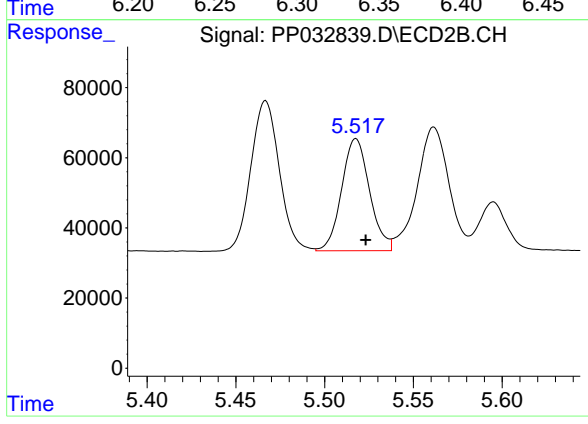
#21 AR-1248-1

R.T.: 5.255 min  
 Delta R.T.: -0.005 min  
 Response: 574800  
 Conc: 743.71 ng/ml



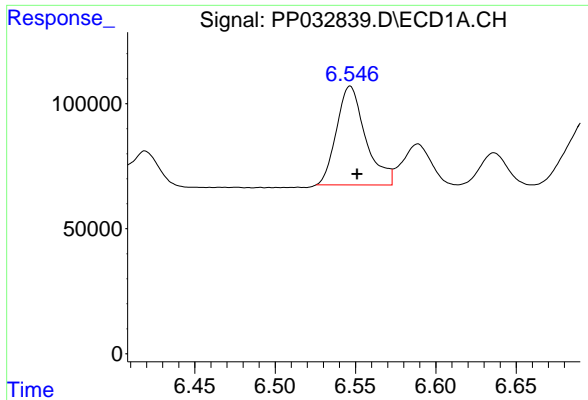
#22 AR-1248-2

R.T.: 6.333 min  
 Delta R.T.: -0.003 min  
 Response: 405223  
 Conc: 332.46 ng/ml



#22 AR-1248-2

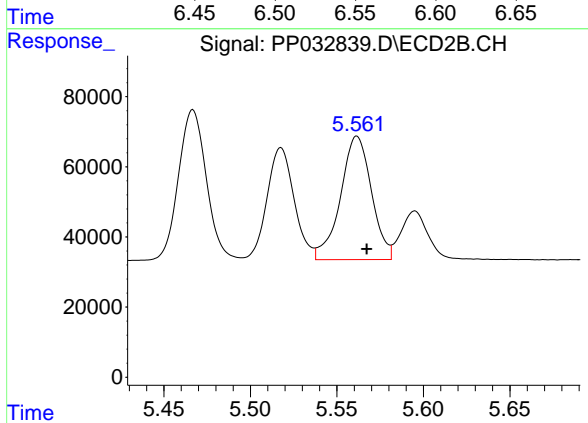
R.T.: 5.518 min  
 Delta R.T.: -0.006 min  
 Response: 349986  
 Conc: 327.62 ng/ml



#23 AR-1248-3

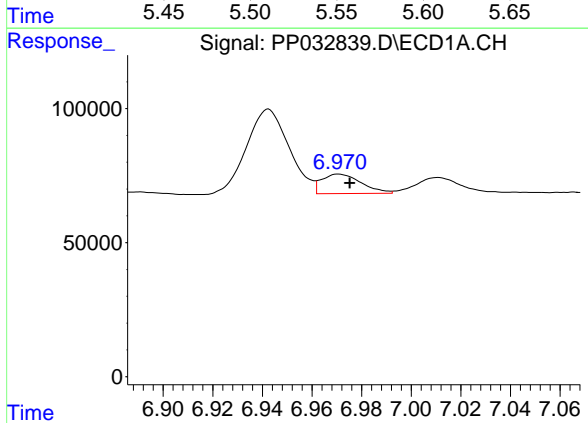
R.T.: 6.547 min  
 Delta R.T.: -0.004 min  
 Response: 497358  
 Conc: 332.27 ng/ml

Instrument :  
 ECD\_P  
 ClientSampleId :  
 PB134217BS



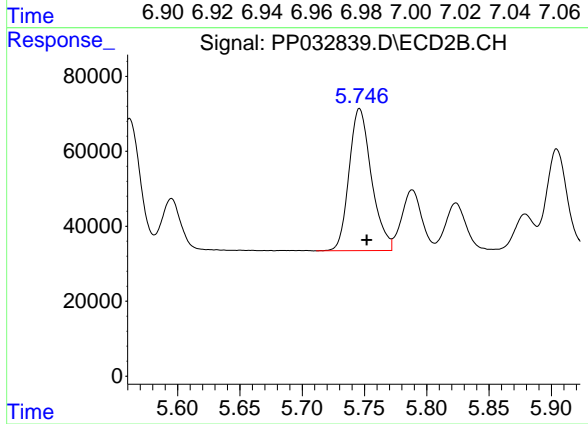
#23 AR-1248-3

R.T.: 5.562 min  
 Delta R.T.: -0.006 min  
 Response: 438295  
 Conc: 383.61 ng/ml



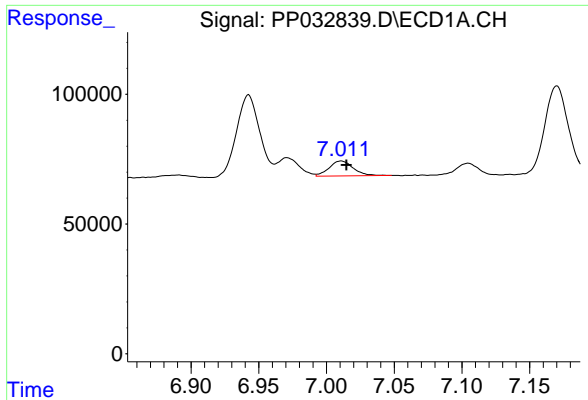
#24 AR-1248-4

R.T.: 6.971 min  
 Delta R.T.: -0.004 min  
 Response: 80756  
 Conc: 49.79 ng/ml



#24 AR-1248-4

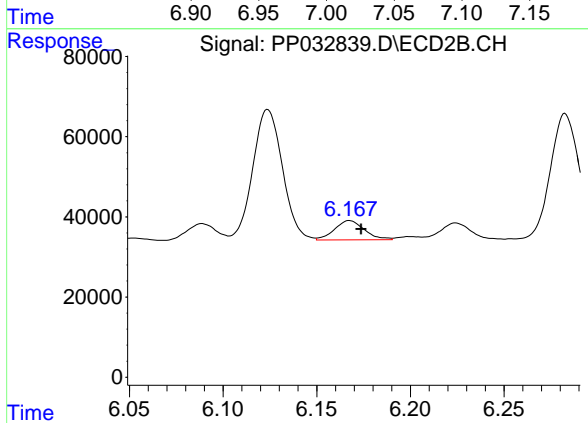
R.T.: 5.746 min  
 Delta R.T.: -0.006 min  
 Response: 474457  
 Conc: 345.51 ng/ml



#25 AR-1248-5

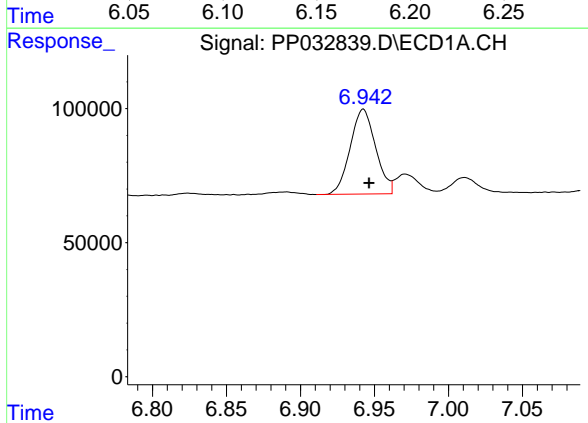
R.T.: 7.011 min  
 Delta R.T.: -0.004 min  
 Response: 71720  
 Conc: 44.85 ng/ml

Instrument :  
 ECD\_P  
 ClientSampleId :  
 PB134217BS



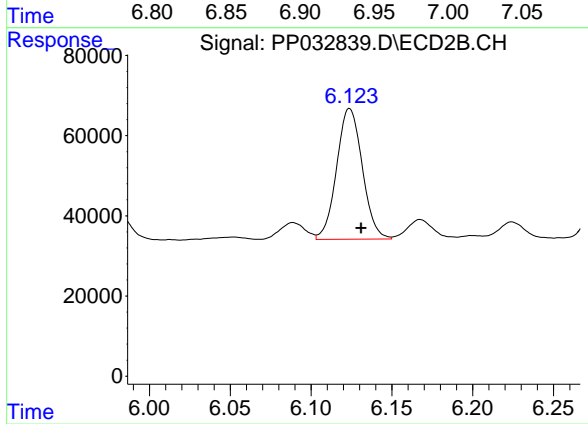
#25 AR-1248-5

R.T.: 6.168 min  
 Delta R.T.: -0.006 min  
 Response: 53261  
 Conc: 40.42 ng/ml



#26 AR-1254-1

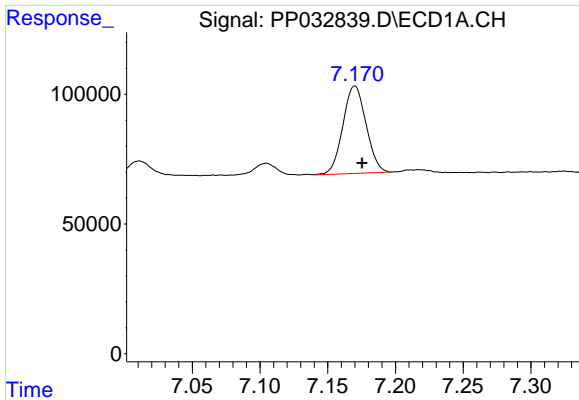
R.T.: 6.942 min  
 Delta R.T.: -0.004 min  
 Response: 378841  
 Conc: 228.10 ng/ml



#26 AR-1254-1

R.T.: 6.124 min  
 Delta R.T.: -0.007 min  
 Response: 360550  
 Conc: 176.11 ng/ml

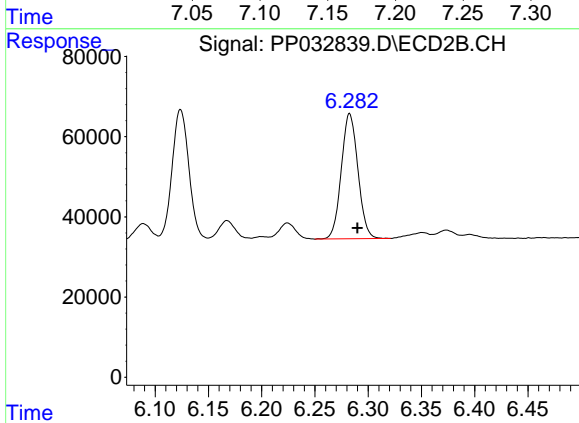




#27 AR-1254-2

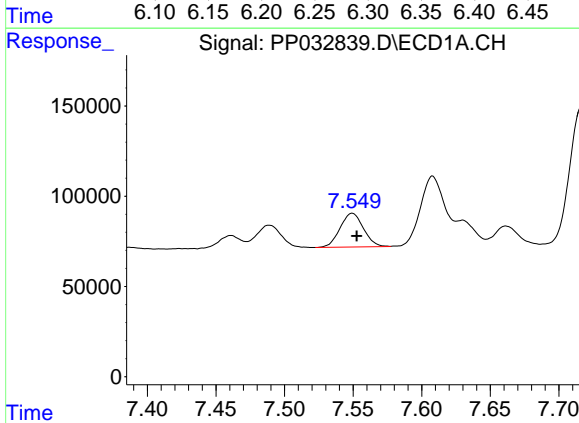
R.T.: 7.170 min  
 Delta R.T.: -0.005 min  
 Response: 402145  
 Conc: 159.90 ng/ml

Instrument :  
 ECD\_P  
 ClientSampleId :  
 PB134217BS



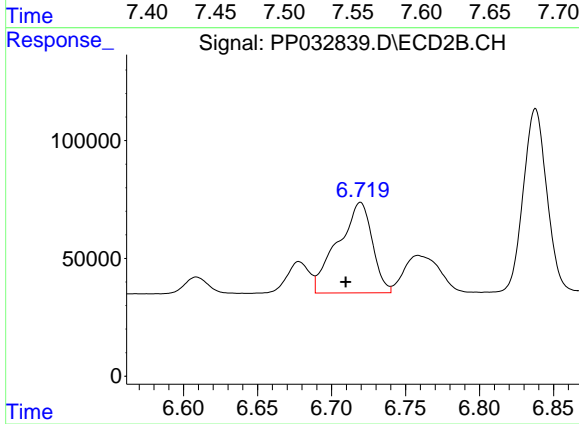
#27 AR-1254-2

R.T.: 6.283 min  
 Delta R.T.: -0.007 min  
 Response: 339914  
 Conc: 193.55 ng/ml



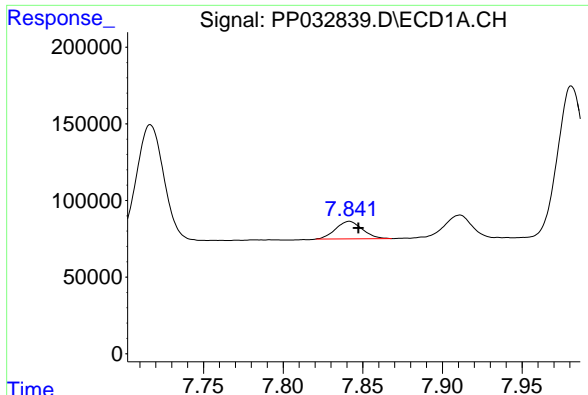
#28 AR-1254-3

R.T.: 7.549 min  
 Delta R.T.: -0.003 min  
 Response: 222159  
 Conc: 82.45 ng/ml



#28 AR-1254-3

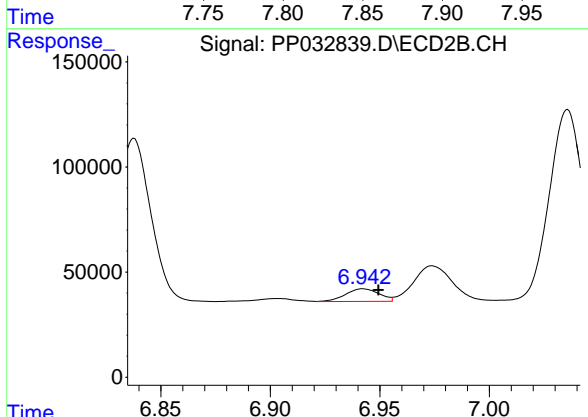
R.T.: 6.720 min  
 Delta R.T.: 0.010 min  
 Response: 623110  
 Conc: 216.96 ng/ml



#29 AR-1254-4

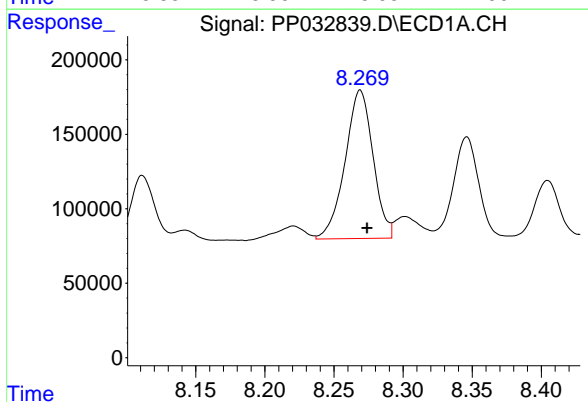
R.T.: 7.842 min  
 Delta R.T.: -0.006 min  
 Response: 133492  
 Conc: 67.77 ng/ml

Instrument :  
 ECD\_P  
 ClientSampled :  
 PB134217BS



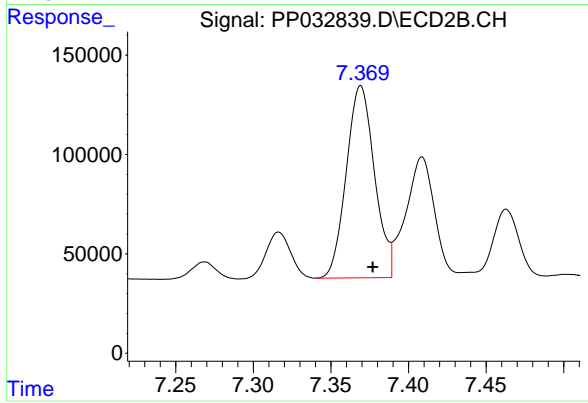
#29 AR-1254-4

R.T.: 6.942 min  
 Delta R.T.: -0.007 min  
 Response: 63754  
 Conc: 38.50 ng/ml



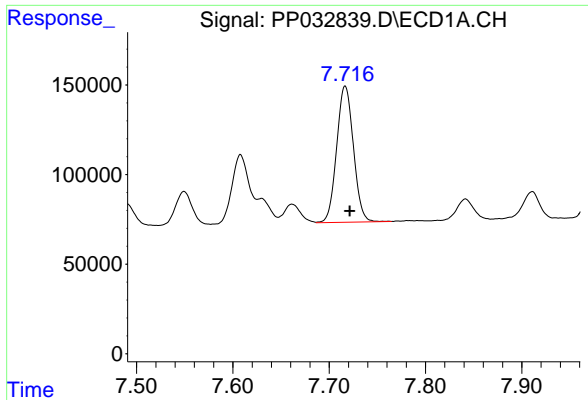
#30 AR-1254-5

R.T.: 8.269 min  
 Delta R.T.: -0.005 min  
 Response: 1403577  
 Conc: 673.03 ng/ml



#30 AR-1254-5

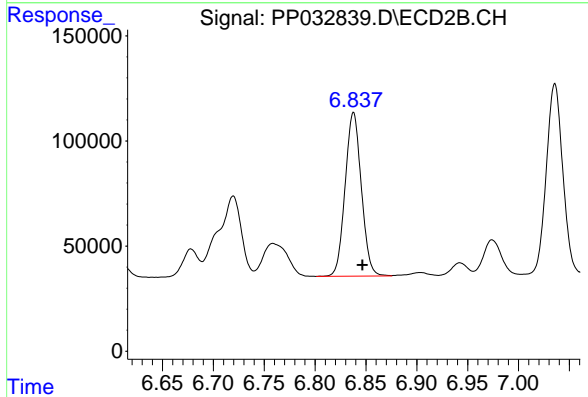
R.T.: 7.369 min  
 Delta R.T.: -0.008 min  
 Response: 1222711  
 Conc: 505.49 ng/ml



#31 AR-1260-1

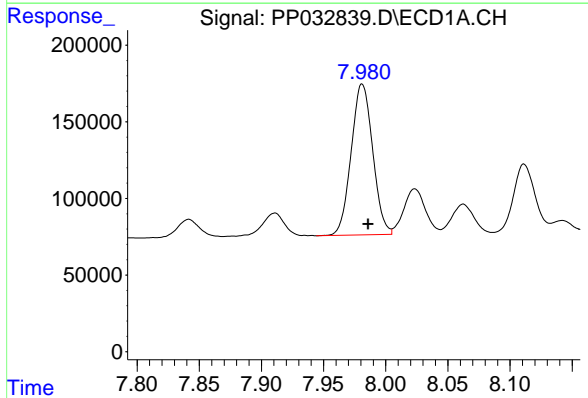
R.T.: 7.717 min  
 Delta R.T.: -0.005 min  
 Response: 916169  
 Conc: 480.59 ng/ml

Instrument :  
 ECD\_P  
 ClientSampleId :  
 PB134217BS



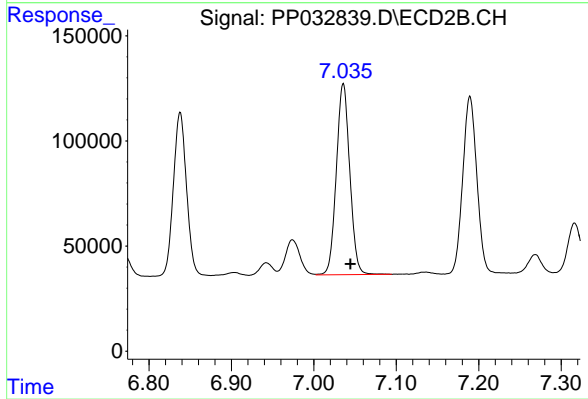
#31 AR-1260-1

R.T.: 6.838 min  
 Delta R.T.: -0.009 min  
 Response: 863015  
 Conc: 452.41 ng/ml



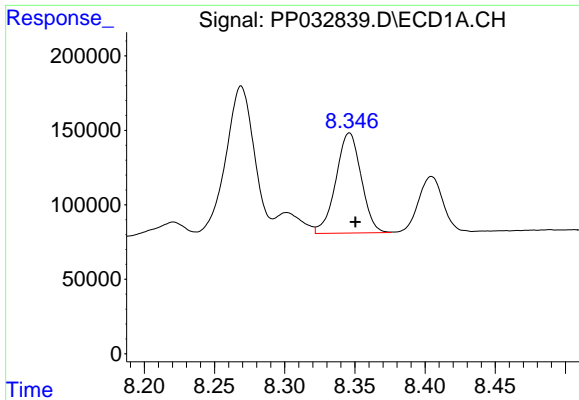
#32 AR-1260-2

R.T.: 7.981 min  
 Delta R.T.: -0.005 min  
 Response: 1186471  
 Conc: 491.26 ng/ml



#32 AR-1260-2

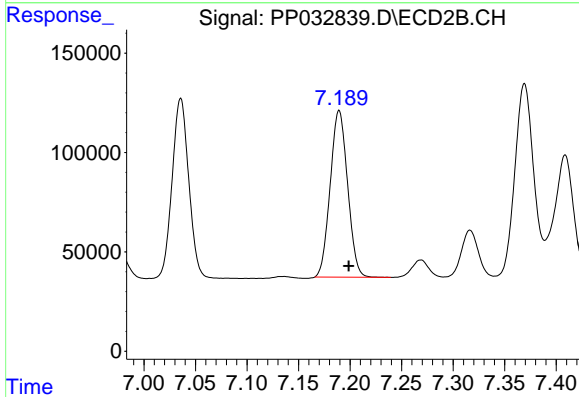
R.T.: 7.036 min  
 Delta R.T.: -0.009 min  
 Response: 1029047  
 Conc: 451.56 ng/ml



#33 AR-1260-3

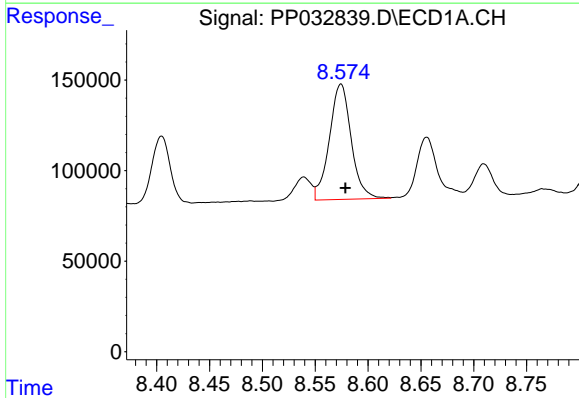
R.T.: 8.346 min  
 Delta R.T.: -0.004 min  
 Response: 844804  
 Conc: 419.13 ng/ml

Instrument :  
 ECD\_P  
 ClientSampleId :  
 PB134217BS



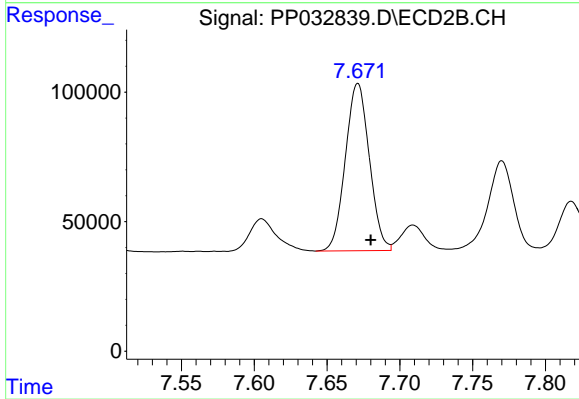
#33 AR-1260-3

R.T.: 7.189 min  
 Delta R.T.: -0.010 min  
 Response: 984789  
 Conc: 450.35 ng/ml



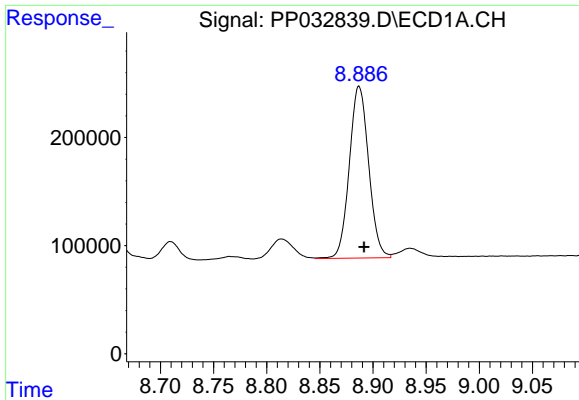
#34 AR-1260-4

R.T.: 8.574 min  
 Delta R.T.: -0.004 min  
 Response: 915552  
 Conc: 444.35 ng/ml



#34 AR-1260-4

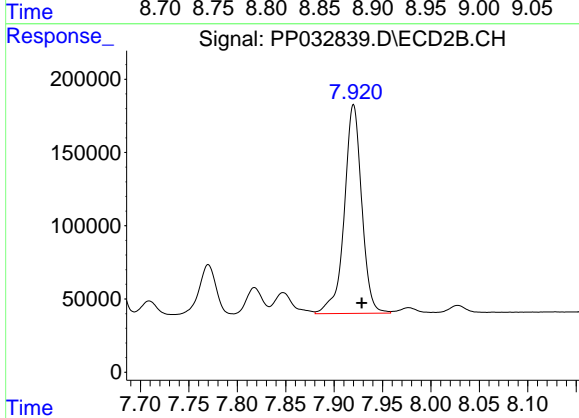
R.T.: 7.671 min  
 Delta R.T.: -0.009 min  
 Response: 739477  
 Conc: 404.68 ng/ml



#35 AR-1260-5

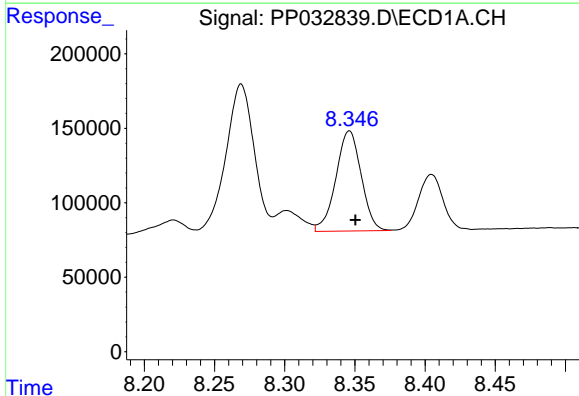
R.T.: 8.887 min  
 Delta R.T.: -0.005 min  
 Response: 2013112  
 Conc: 444.40 ng/ml

Instrument :  
 ECD\_P  
 ClientSampled :  
 PB134217BS



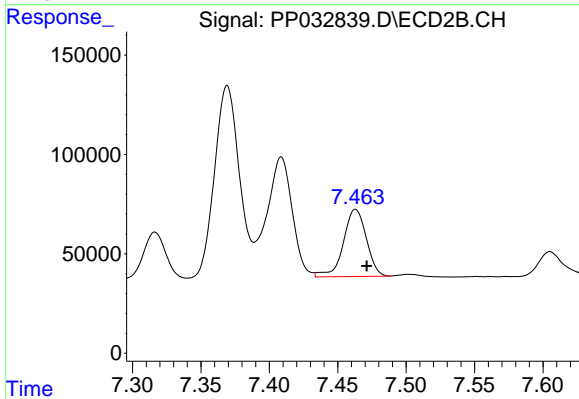
#35 AR-1260-5

R.T.: 7.920 min  
 Delta R.T.: -0.008 min  
 Response: 1790175  
 Conc: 416.16 ng/ml



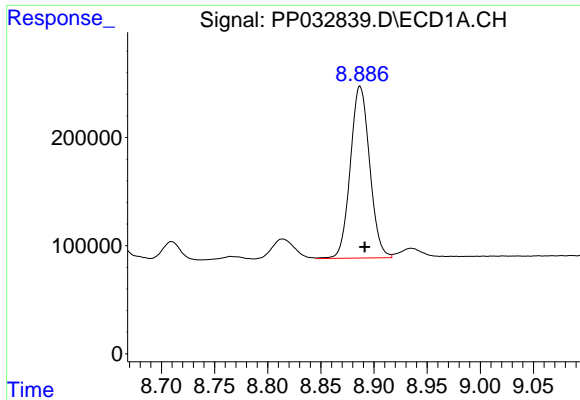
#36 AR-1262-1

R.T.: 8.346 min  
 Delta R.T.: -0.004 min  
 Response: 844804  
 Conc: 284.85 ng/ml



#36 AR-1262-1

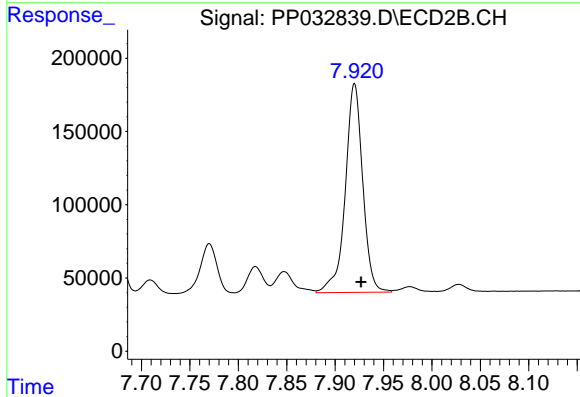
R.T.: 7.463 min  
 Delta R.T.: -0.008 min  
 Response: 394922  
 Conc: 351.43 ng/ml



#37 AR-1262-2

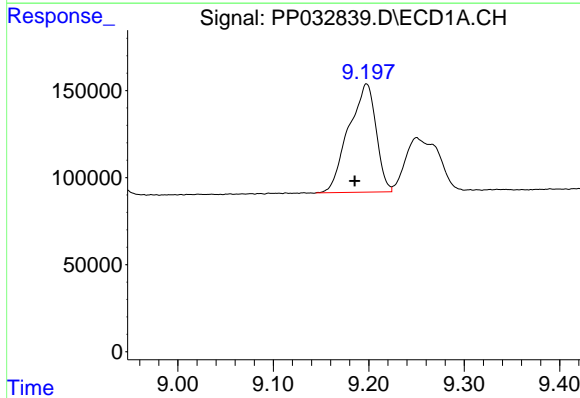
R.T.: 8.887 min  
 Delta R.T.: -0.004 min  
 Response: 2013112  
 Conc: 397.39 ng/ml

Instrument :  
 ECD\_P  
 ClientSampleId :  
 PB134217BS



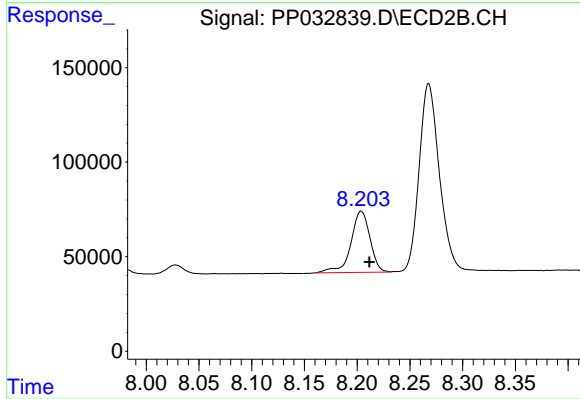
#37 AR-1262-2

R.T.: 7.920 min  
 Delta R.T.: -0.007 min  
 Response: 1790175  
 Conc: 388.07 ng/ml



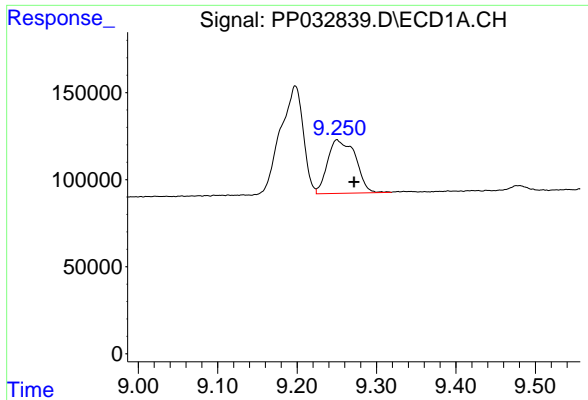
#38 AR-1262-3

R.T.: 9.198 min  
 Delta R.T.: 0.012 min  
 Response: 1242501  
 Conc: 353.29 ng/ml



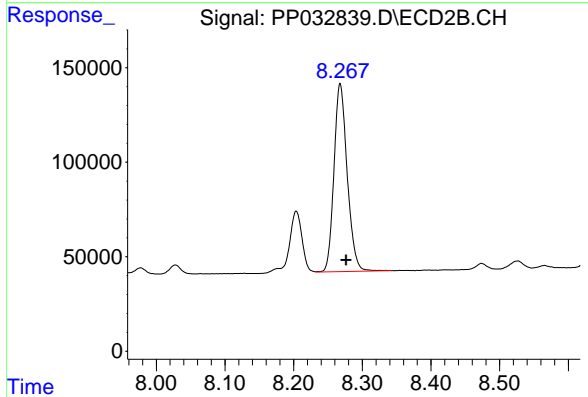
#38 AR-1262-3

R.T.: 8.204 min  
 Delta R.T.: -0.008 min  
 Response: 406060  
 Conc: 212.07 ng/ml

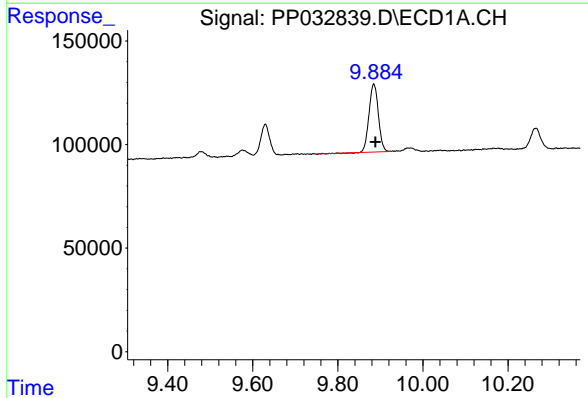


#39 AR-1262-4  
 R.T.: 9.250 min  
 Delta R.T.: -0.022 min  
 Response: 751790  
 Conc: 272.12 ng/ml

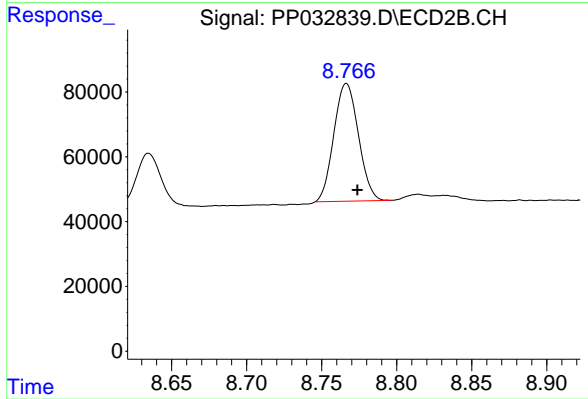
Instrument :  
 ECD\_P  
 ClientSampleId :  
 PB134217BS



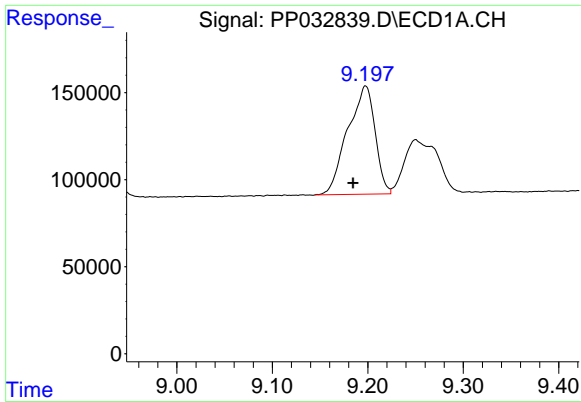
#39 AR-1262-4  
 R.T.: 8.268 min  
 Delta R.T.: -0.008 min  
 Response: 1328457  
 Conc: 375.33 ng/ml



#40 AR-1262-5  
 R.T.: 9.884 min  
 Delta R.T.: -0.004 min  
 Response: 500974  
 Conc: 276.12 ng/ml



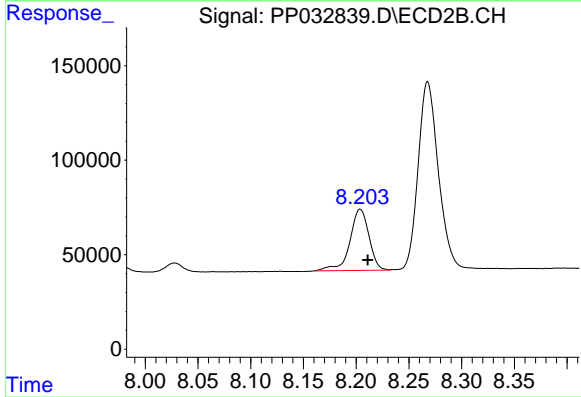
#40 AR-1262-5  
 R.T.: 8.767 min  
 Delta R.T.: -0.007 min  
 Response: 413511  
 Conc: 261.41 ng/ml



#41 AR-1268-1

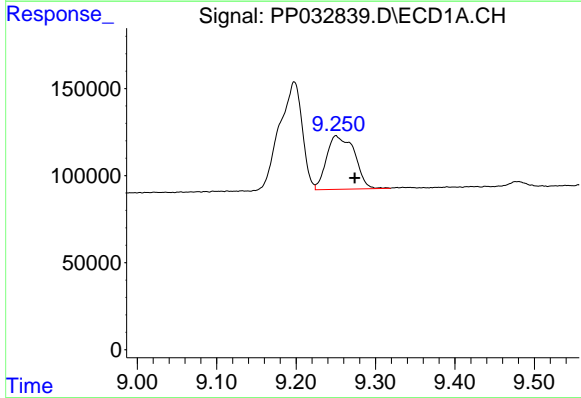
R.T.: 9.198 min  
 Delta R.T.: 0.013 min  
 Response: 1242501  
 Conc: 187.68 ng/ml

Instrument :  
 ECD\_P  
 ClientSampled :  
 PB134217BS



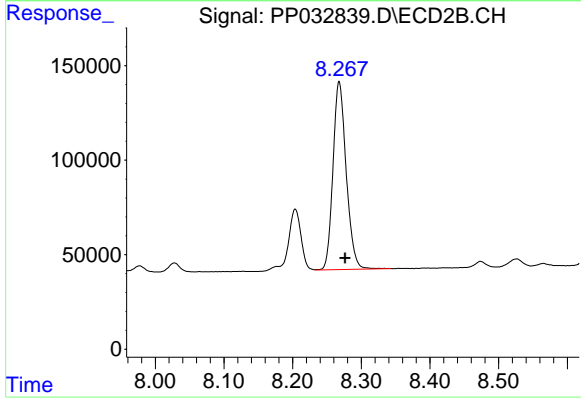
#41 AR-1268-1

R.T.: 8.204 min  
 Delta R.T.: -0.007 min  
 Response: 406060  
 Conc: 72.01 ng/ml



#42 AR-1268-2

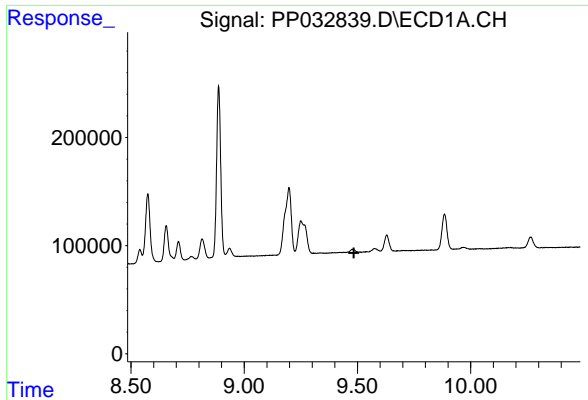
R.T.: 9.250 min  
 Delta R.T.: -0.024 min  
 Response: 751790  
 Conc: 124.80 ng/ml



#42 AR-1268-2

R.T.: 8.268 min  
 Delta R.T.: -0.009 min  
 Response: 1328457  
 Conc: 245.05 ng/ml

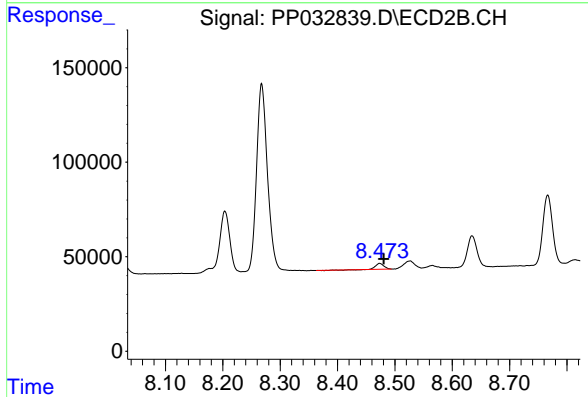




#43 AR-1268-3

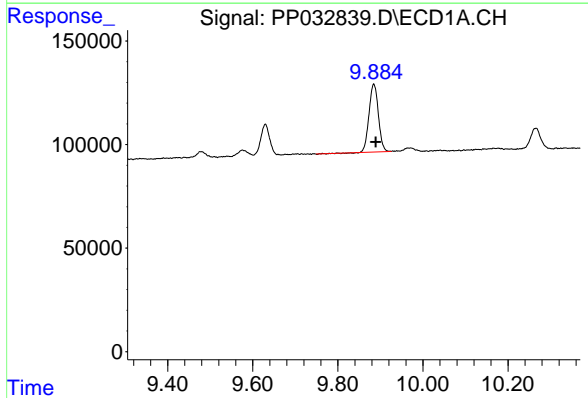
R.T.: 0.000 min  
 Exp R.T.: 9.484 min  
 Response: 0  
 Conc: N.D.

Instrument :  
 ECD\_P  
 ClientSampleId :  
 PB134217BS



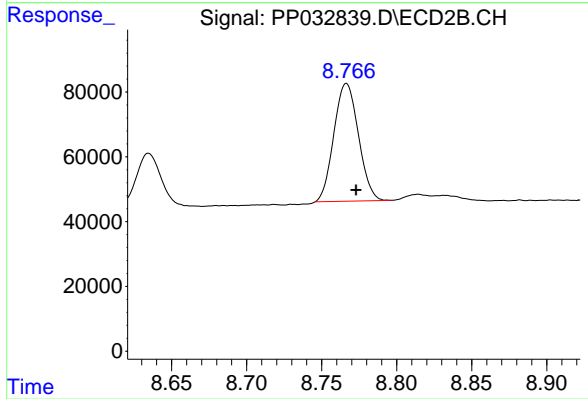
#43 AR-1268-3

R.T.: 8.474 min  
 Delta R.T.: -0.007 min  
 Response: 29775  
 Conc: 6.27 ng/ml



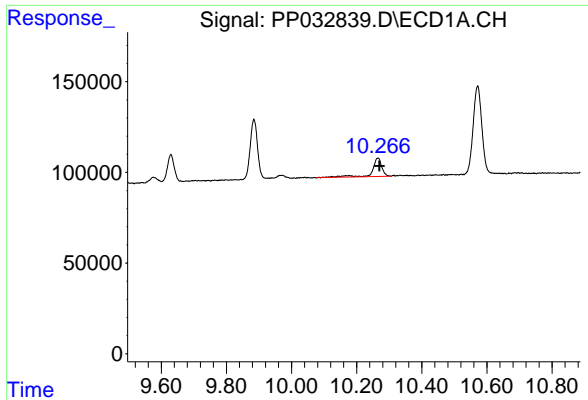
#44 AR-1268-4

R.T.: 9.884 min  
 Delta R.T.: -0.005 min  
 Response: 500974  
 Conc: 244.28 ng/ml



#44 AR-1268-4

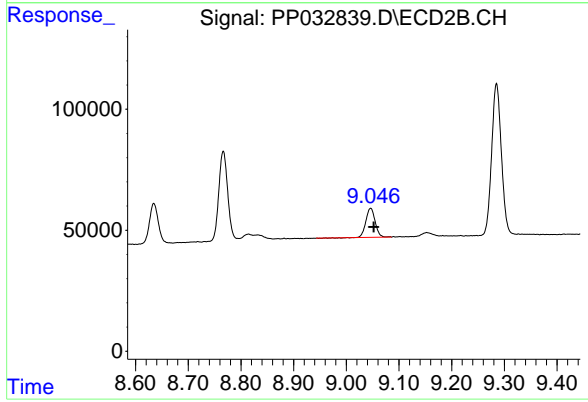
R.T.: 8.767 min  
 Delta R.T.: -0.006 min  
 Response: 413511  
 Conc: 228.63 ng/ml



#45 AR-1268-5

R.T.: 10.266 min  
Delta R.T.: -0.004 min  
Response: 203615  
Conc: 13.47 ng/ml

Instrument :  
ECD\_P  
ClientSampled :  
PB134217BS



#45 AR-1268-5

R.T.: 9.046 min  
Delta R.T.: -0.006 min  
Response: 147774  
Conc: 10.21 ng/ml