

Data Path : Z:\pestpcbsrv\HPCHEM1\ECD_P\Data\PP011922\
 Data File : PP043127.D
 Signal(s) : Signal #1: ECD1A.CH Signal #2: ECD2B.CH
 Acq On : 19 Jan 2022 23:21
 Operator : AJ\MA
 Sample : N1187-09
 Misc :
 ALS Vial : 32 Sample Multiplier: 1

Instrument :
 ECD_P
 ClientSampleId :
 600492261

Integration File signal 1: autoint1.e
 Integration File signal 2: autoint2.e
 Quant Time: Jan 20 03:00:59 2022
 Quant Method : Z:\pestpcbsrv\HPCHEM1\ECD_P\methods\PP011222.M
 Quant Title : GC EXTRACTABLES
 QLast Update : Thu Jan 13 19:45:07 2022
 Response via : Initial Calibration
 Integrator: ChemStation 6890 Scale Mode: Small noise peaks clipped

Volume Inj. : 2 µl
 Signal #1 Phase : ZB-MR1 Signal #2 Phase: ZB-MR2
 Signal #1 Info : 30Mx0.32mmx 0.50µ Signal #2 Info : 30M x 0.32mm x 0.25µm

Compound	RT#1	RT#2	Resp#1	Resp#2	ng/ml	ng/ml

System Monitoring Compounds						
1) SA Tetrachlo...	4.874	4.041	453927	504485	19.184	20.199
2) SA Decachlor...	10.801	9.370	265054	343450	18.131	17.607

Target Compounds

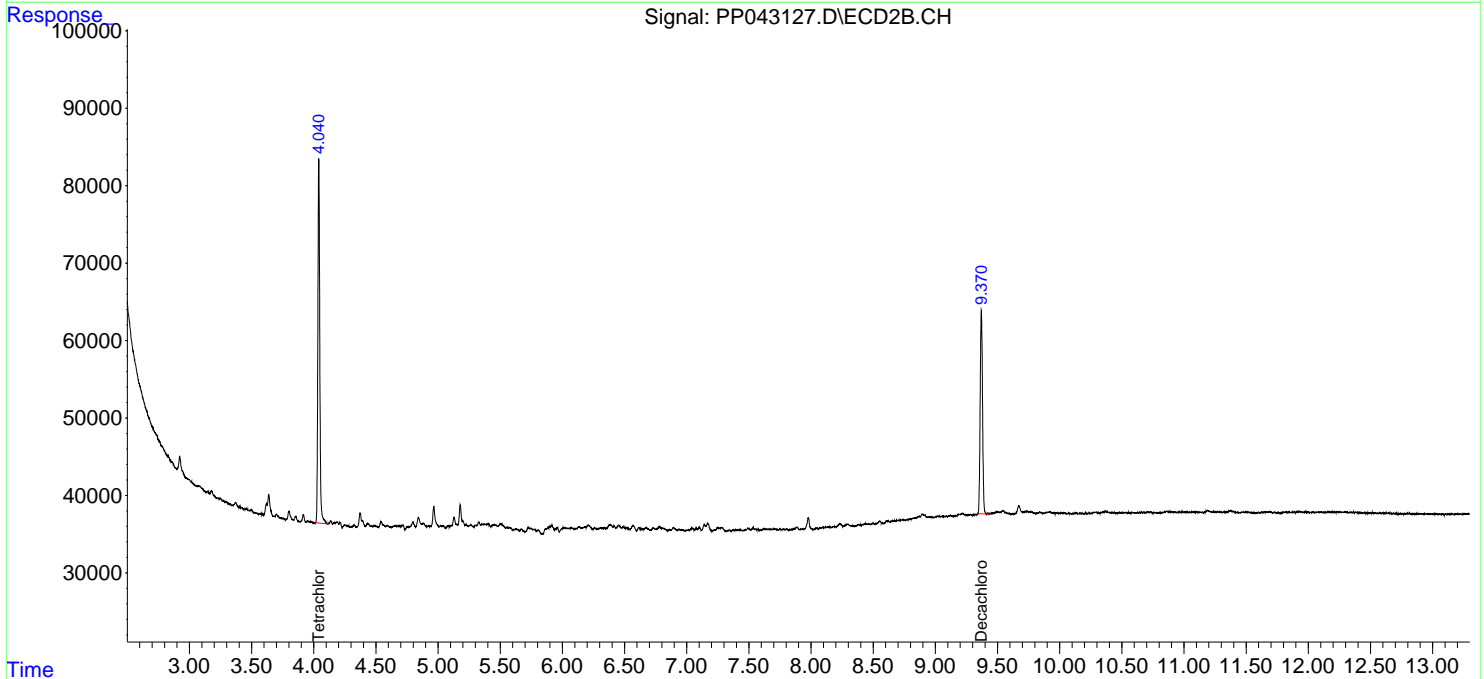
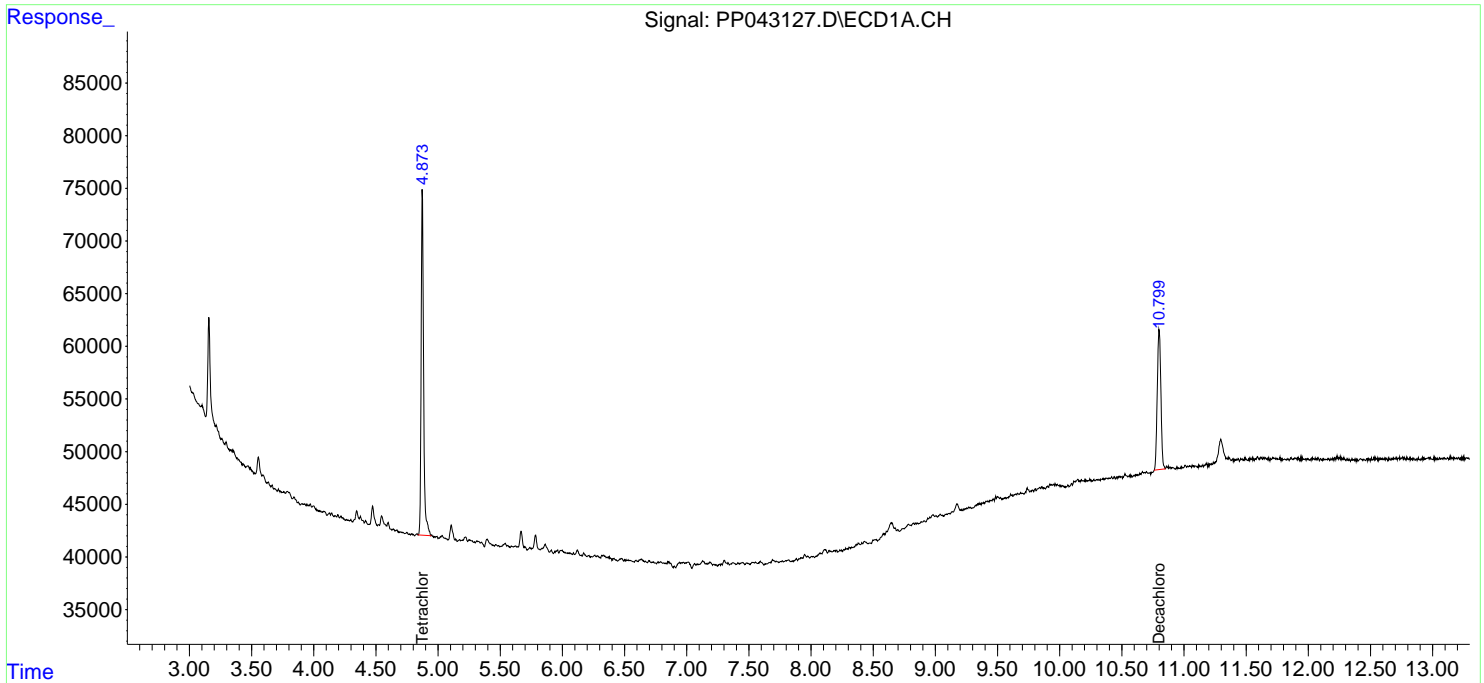
(f)=RT Delta > 1/2 Window (#)=Amounts differ by > 25% (m)=manual int.

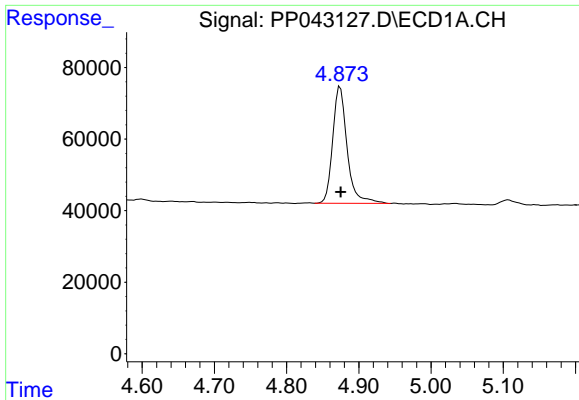
Data Path : Z:\pestpcbsrv\HPCHEM1\ECD_P\Data\PP011922\
 Data File : PP043127.D
 Signal(s) : Signal #1: ECD1A.CH Signal #2: ECD2B.CH
 Acq On : 19 Jan 2022 23:21
 Operator : AJ\MA
 Sample : N1187-09
 Misc :
 ALS Vial : 32 Sample Multiplier: 1

Instrument :
 ECD_P
 ClientSampleId :
 600492261

Integration File signal 1: autoint1.e
 Integration File signal 2: autoint2.e
 Quant Time: Jan 20 03:00:59 2022
 Quant Method : Z:\pestpcbsrv\HPCHEM1\ECD_P\methods\PP011222.M
 Quant Title : GC EXTRACTABLES
 QLast Update : Thu Jan 13 19:45:07 2022
 Response via : Initial Calibration
 Integrator: ChemStation 6890 Scale Mode: Small noise peaks clipped

Volume Inj. : 2 µl
 Signal #1 Phase : ZB-MR1 Signal #2 Phase: ZB-MR2
 Signal #1 Info : 30Mx0.32mmx 0.50µ Signal #2 Info : 30M x 0.32mm x 0.25µm

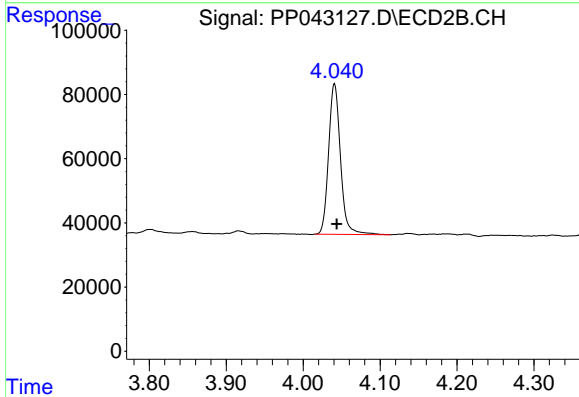




#1 Tetrachloro-m-xylene

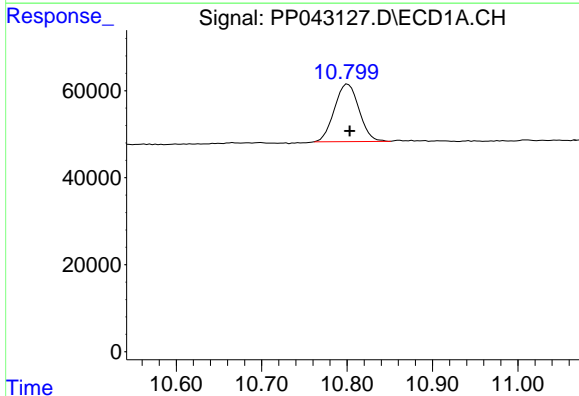
R.T.: 4.874 min
 Delta R.T.: 0.000 min
 Response: 453927
 Conc: 19.18 ng/ml

Instrument :
 ECD_P
 ClientSampleId :
 600492261



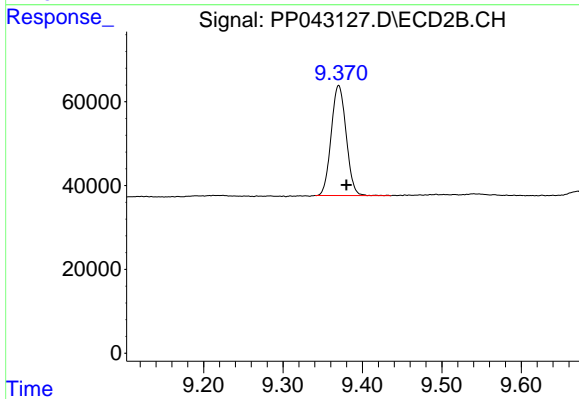
#1 Tetrachloro-m-xylene

R.T.: 4.041 min
 Delta R.T.: -0.003 min
 Response: 504485
 Conc: 20.20 ng/ml



#2 Decachlorobiphenyl

R.T.: 10.801 min
 Delta R.T.: -0.002 min
 Response: 265054
 Conc: 18.13 ng/ml



#2 Decachlorobiphenyl

R.T.: 9.370 min
 Delta R.T.: -0.010 min
 Response: 343450
 Conc: 17.61 ng/ml