

Data Path : Z:\pestpcbsrv\HPCHEM1\ECD_P\Data\PP011923\
 Data File : PP054712.D
 Signal(s) : Signal #1: ECD1A.ch Signal #2: ECD2B.ch
 Acq On : 19 Jan 2023 11:38
 Operator : YP\AJ
 Sample : AR1254CCC500
 Misc :
 ALS Vial : 6 Sample Multiplier: 1

Instrument :
 ECD_P
 ClientSampleId :
 AR1254CCC500

Integration File signal 1: autoint1.e
 Integration File signal 2: autoint2.e
 Quant Time: Jan 20 04:03:21 2023
 Quant Method : Z:\pestpcbsrv\HPCHEM1\ECD_P\methods\PP011723.M
 Quant Title : GC EXTRACTABLES
 QLast Update : Wed Jan 18 04:34:06 2023
 Response via : Initial Calibration
 Integrator: ChemStation

Volume Inj. : 2 µl
 Signal #1 Phase : ZB-MR1 Signal #2 Phase: ZB-MR2
 Signal #1 Info : 30Mx0.32mmx 0.50µ Signal #2 Info : 30M x 0.32mm x 0.25µm

Compound	RT#1	RT#2	Resp#1	Resp#2	ng/ml	ng/ml

System Monitoring Compounds						
1) SA Tetrachlo...	4.330	3.577	91393282	78863495	49.774	49.268
2) SA Decachlor...	10.089	8.597	69463312	68649422	51.751	47.938
Target Compounds						
26) L6 AR-1254-1	6.361	5.468	38486466	42729383	544.521	502.574
27) L6 AR-1254-2	6.581	5.616	58698929	37329720	613.276	512.997
28) L6 AR-1254-3	6.949	6.021	62439409	57683936	719.666	509.685 #
29) L6 AR-1254-4	7.236	6.250	32484259	31723431	518.512	509.688
30) L6 AR-1254-5	7.656	6.670	35855503	48389661	512.376	510.605

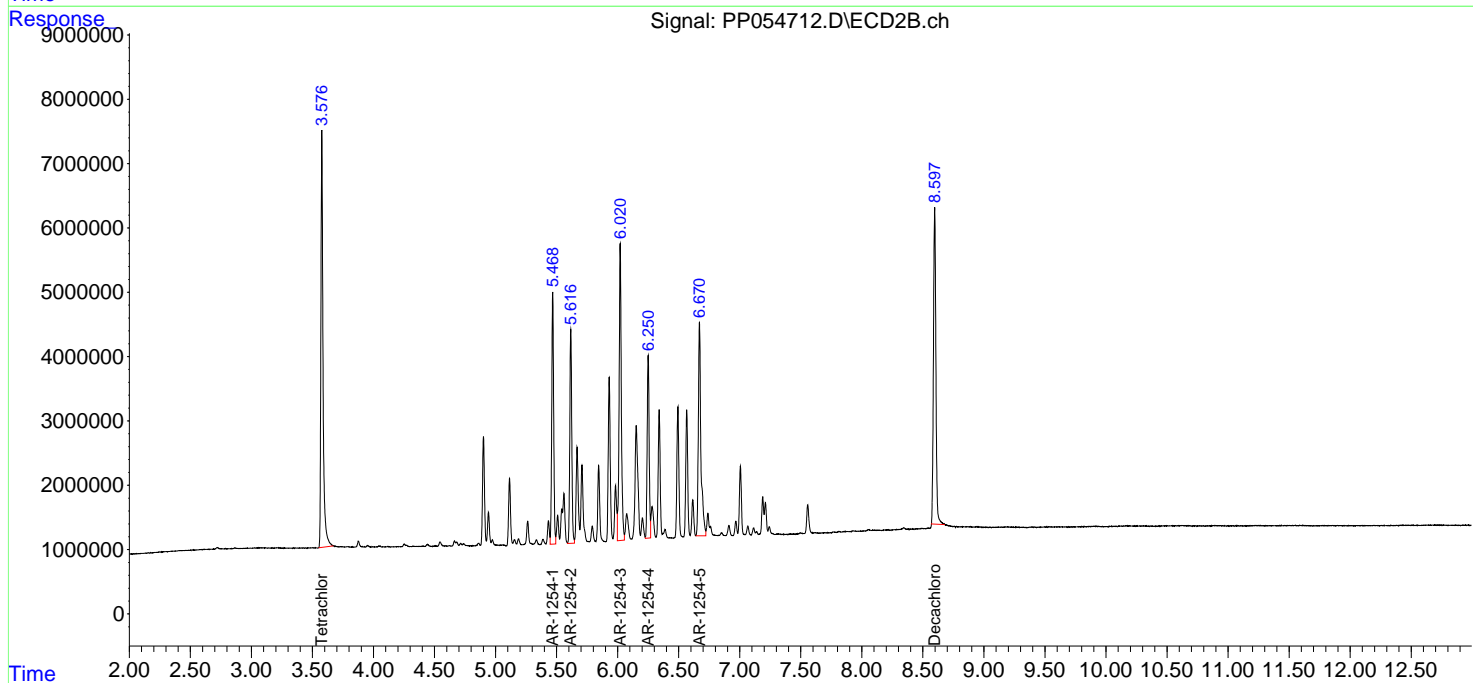
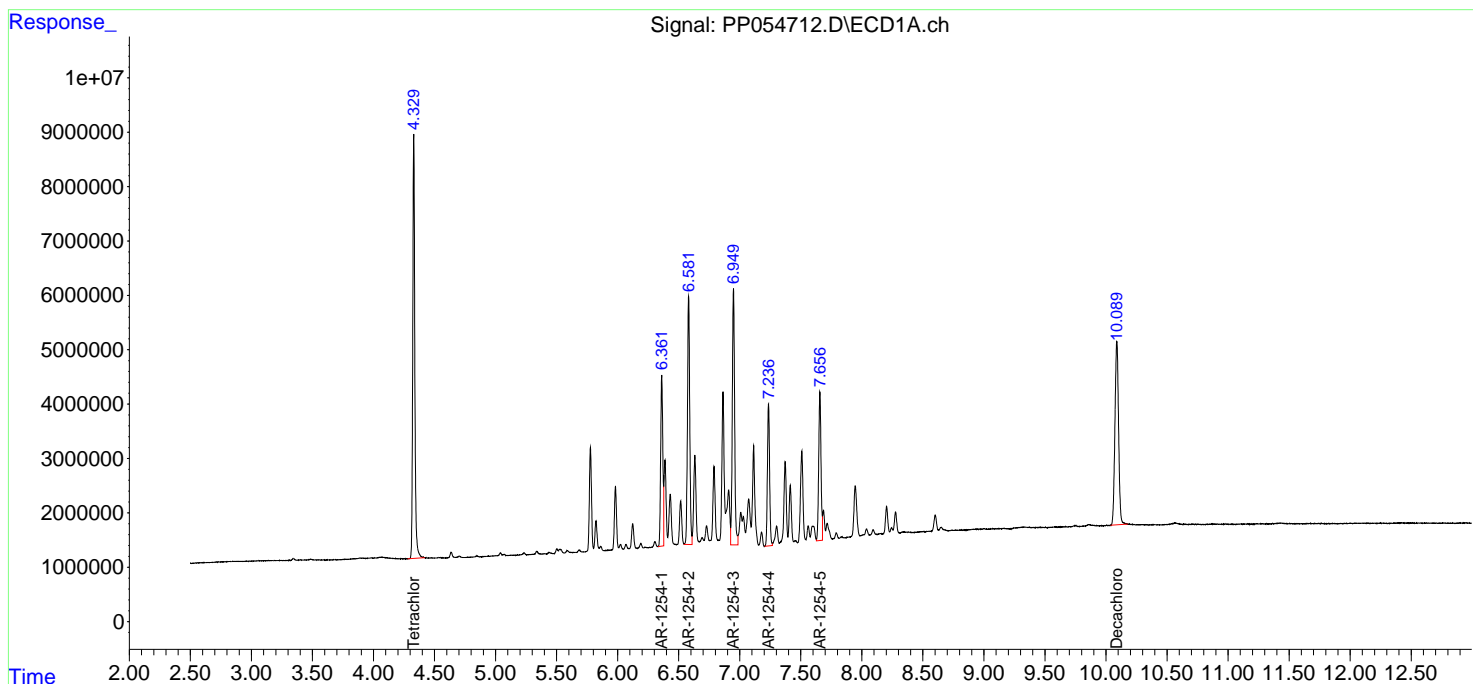
(f)=RT Delta > 1/2 Window (#)=Amounts differ by > 25% (m)=manual int.

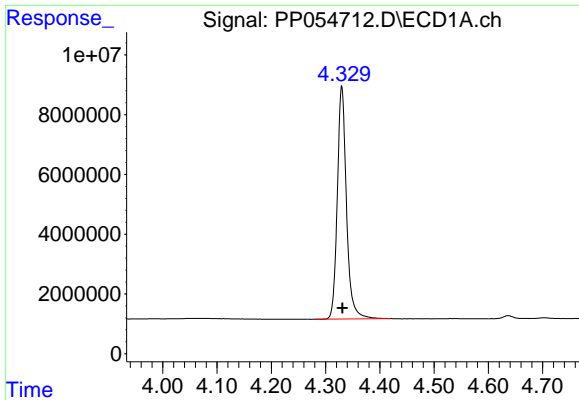
Data Path : Z:\pestpcbsrv\HPCHEM1\ECD_P\Data\PP011923\
 Data File : PP054712.D
 Signal(s) : Signal #1: ECD1A.ch Signal #2: ECD2B.ch
 Acq On : 19 Jan 2023 11:38
 Operator : YP\AJ
 Sample : AR1254CCC500
 Misc :
 ALS Vial : 6 Sample Multiplier: 1

Instrument :
 ECD_P
 ClientSampleId :
 AR1254CCC500

Integration File signal 1: autoint1.e
 Integration File signal 2: autoint2.e
 Quant Time: Jan 20 04:03:21 2023
 Quant Method : Z:\pestpcbsrv\HPCHEM1\ECD_P\methods\PP011723.M
 Quant Title : GC EXTRACTABLES
 QLast Update : Wed Jan 18 04:34:06 2023
 Response via : Initial Calibration
 Integrator: ChemStation

Volume Inj. : 2 µl
 Signal #1 Phase : ZB-MR1 Signal #2 Phase: ZB-MR2
 Signal #1 Info : 30Mx0.32mmx 0.50µ Signal #2 Info : 30M x 0.32mm x 0.25µm

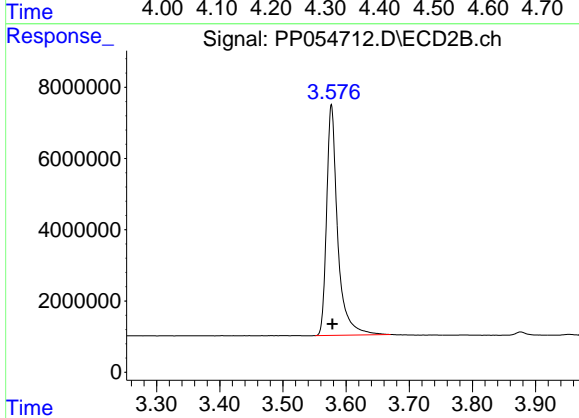




#1 Tetrachloro-m-xylene

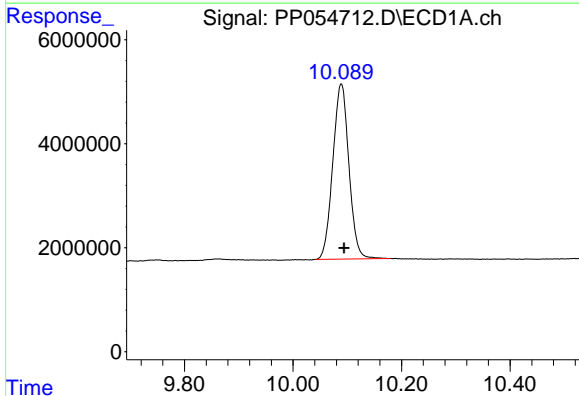
R.T.: 4.330 min
 Delta R.T.: -0.001 min
 Response: 91393282
 Conc: 49.77 ng/ml

Instrument :
 ECD_P
 ClientSampleId :
 AR1254CCC500



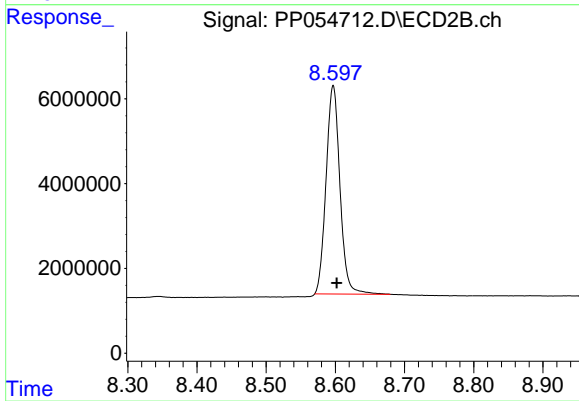
#1 Tetrachloro-m-xylene

R.T.: 3.577 min
 Delta R.T.: -0.002 min
 Response: 78863495
 Conc: 49.27 ng/ml



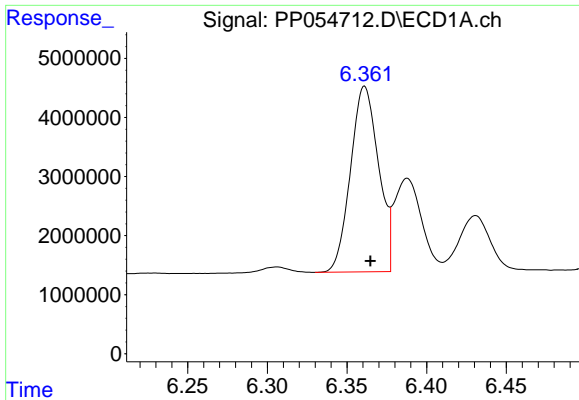
#2 Decachlorobiphenyl

R.T.: 10.089 min
 Delta R.T.: -0.005 min
 Response: 69463312
 Conc: 51.75 ng/ml



#2 Decachlorobiphenyl

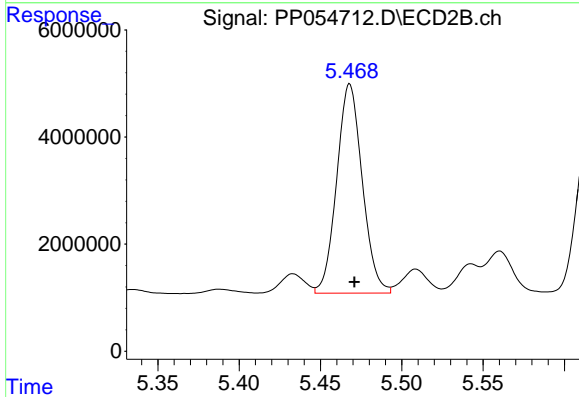
R.T.: 8.597 min
 Delta R.T.: -0.005 min
 Response: 68649422
 Conc: 47.94 ng/ml



#26 AR-1254-1

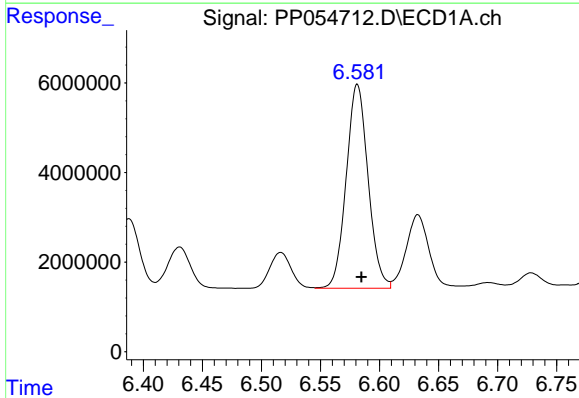
R.T.: 6.361 min
 Delta R.T.: -0.004 min
 Response: 38486466
 Conc: 544.52 ng/ml

Instrument :
 ECD_P
 ClientSampleId :
 AR1254CCC500



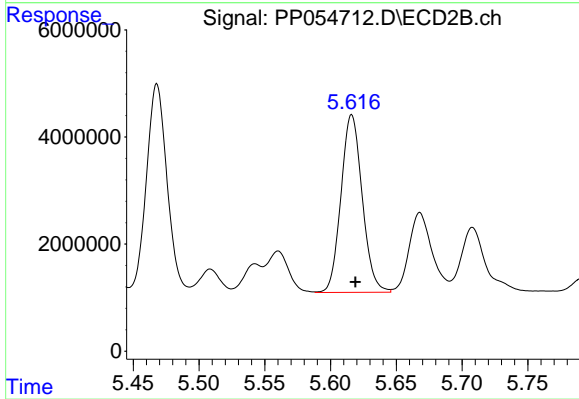
#26 AR-1254-1

R.T.: 5.468 min
 Delta R.T.: -0.003 min
 Response: 42729383
 Conc: 502.57 ng/ml



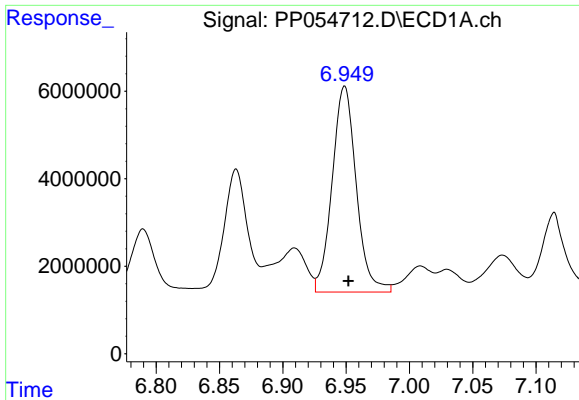
#27 AR-1254-2

R.T.: 6.581 min
 Delta R.T.: -0.004 min
 Response: 58698929
 Conc: 613.28 ng/ml



#27 AR-1254-2

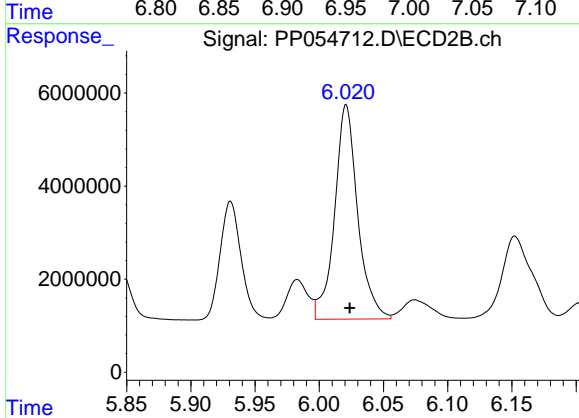
R.T.: 5.616 min
 Delta R.T.: -0.003 min
 Response: 37329720
 Conc: 513.00 ng/ml



#28 AR-1254-3

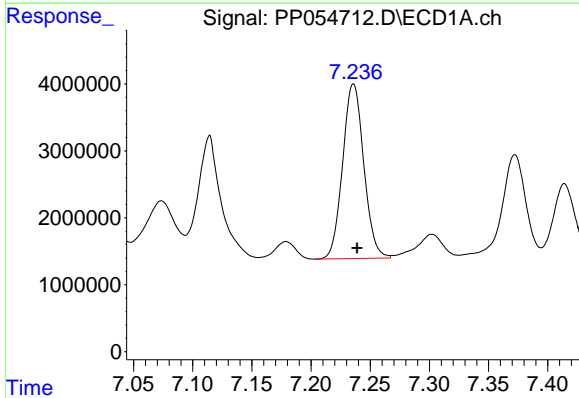
R.T.: 6.949 min
Delta R.T.: -0.003 min
Response: 62439409
Conc: 719.67 ng/ml

Instrument :
ECD_P
ClientSampleId :
AR1254CCC500



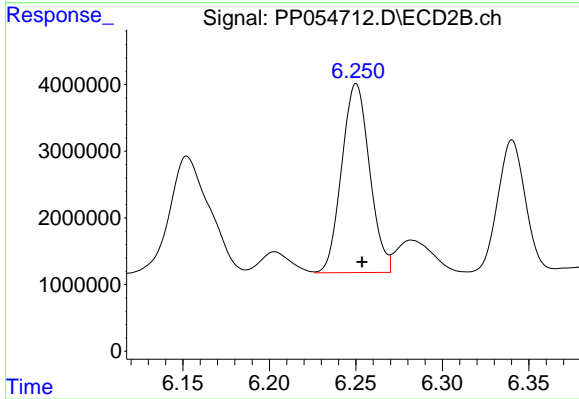
#28 AR-1254-3

R.T.: 6.021 min
Delta R.T.: -0.003 min
Response: 57683936
Conc: 509.69 ng/ml



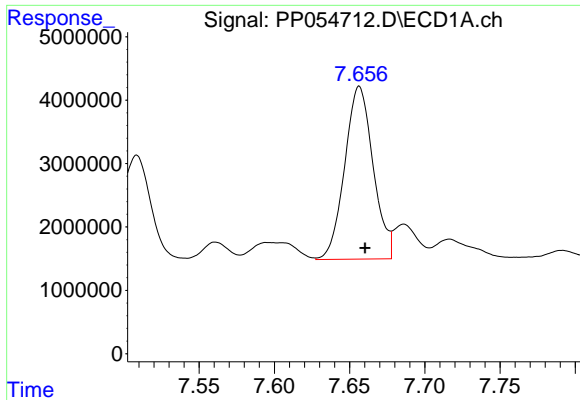
#29 AR-1254-4

R.T.: 7.236 min
Delta R.T.: -0.003 min
Response: 32484259
Conc: 518.51 ng/ml



#29 AR-1254-4

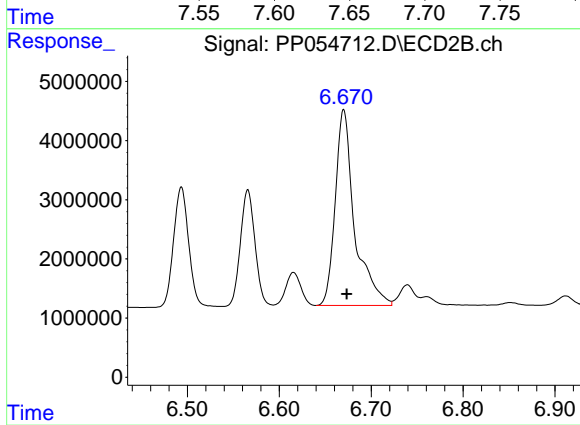
R.T.: 6.250 min
Delta R.T.: -0.003 min
Response: 31723431
Conc: 509.69 ng/ml



#30 AR-1254-5

R.T.: 7.656 min
Delta R.T.: -0.004 min
Response: 35855503
Conc: 512.38 ng/ml

Instrument :
ECD_P
ClientSampleId :
AR1254CCC500



#30 AR-1254-5

R.T.: 6.670 min
Delta R.T.: -0.003 min
Response: 48389661
Conc: 510.61 ng/ml