

Data Path : Z:\pestpcbsrv\HPCHEM1\ECD_P\Data\PP011923\
 Data File : PP054730.D
 Signal(s) : Signal #1: ECD1A.ch Signal #2: ECD2B.ch
 Acq On : 19 Jan 2023 18:18
 Operator : YP\AJ
 Sample : 01214-05
 Misc :
 ALS Vial : 20 Sample Multiplier: 1

Instrument :
 ECD_P
ClientSampleId :
 TJRC-011723-B3-10-20

Integration File signal 1: autoint1.e
 Integration File signal 2: autoint2.e
 Quant Time: Jan 19 20:58:18 2023
 Quant Method : Z:\pestpcbsrv\HPCHEM1\ECD_P\methods\PP011723.M
 Quant Title : GC EXTRACTABLES
 QLast Update : Wed Jan 18 04:34:06 2023
 Response via : Initial Calibration
 Integrator: ChemStation

Volume Inj. : 2 µl
 Signal #1 Phase : ZB-MR1 Signal #2 Phase: ZB-MR2
 Signal #1 Info : 30Mx0.32mmx 0.50µ Signal #2 Info : 30M x 0.32mm x 0.25µm

Compound	RT#1	RT#2	Resp#1	Resp#2	ng/ml	ng/ml

System Monitoring Compounds						
1) SA Tetrachlo...	4.331	3.578	37325165	32085994	20.328	20.045
2) SA Decachlor...	10.094	8.600	21070600	22192666	15.698	15.497

Target Compounds

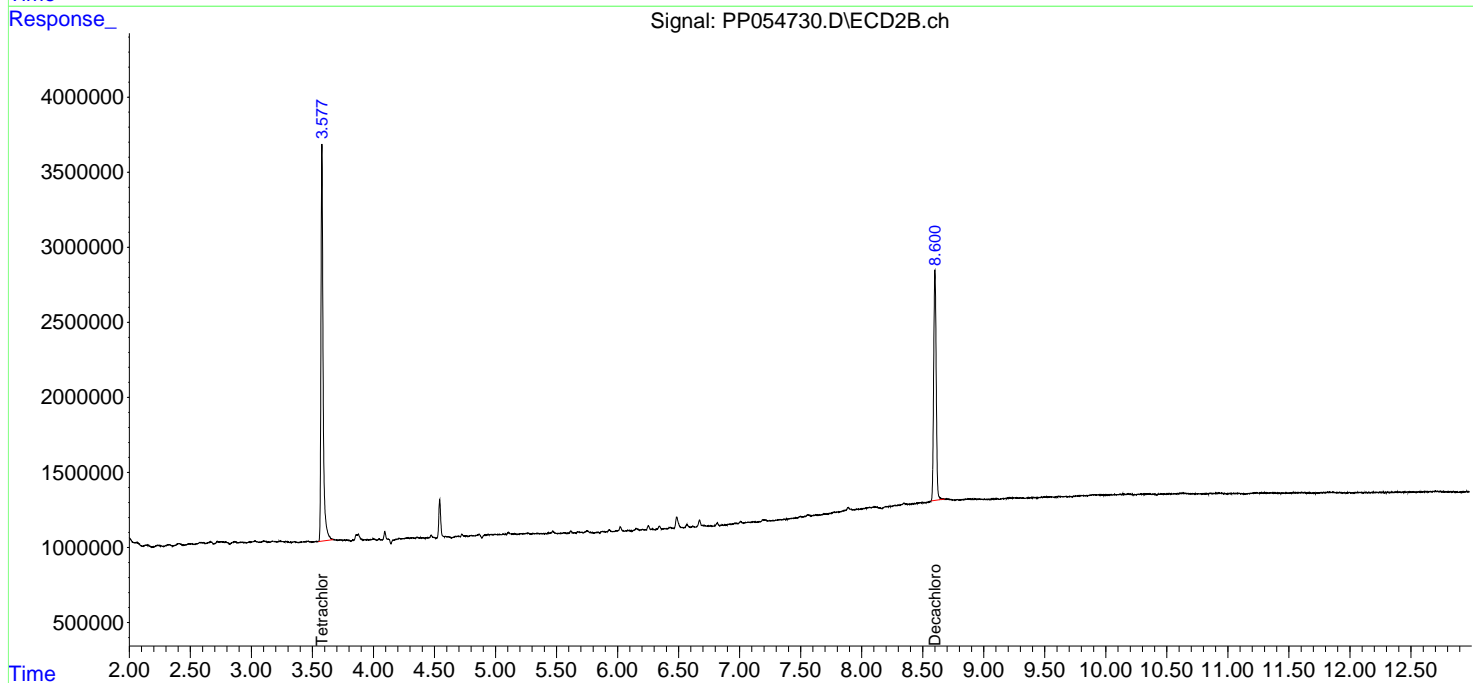
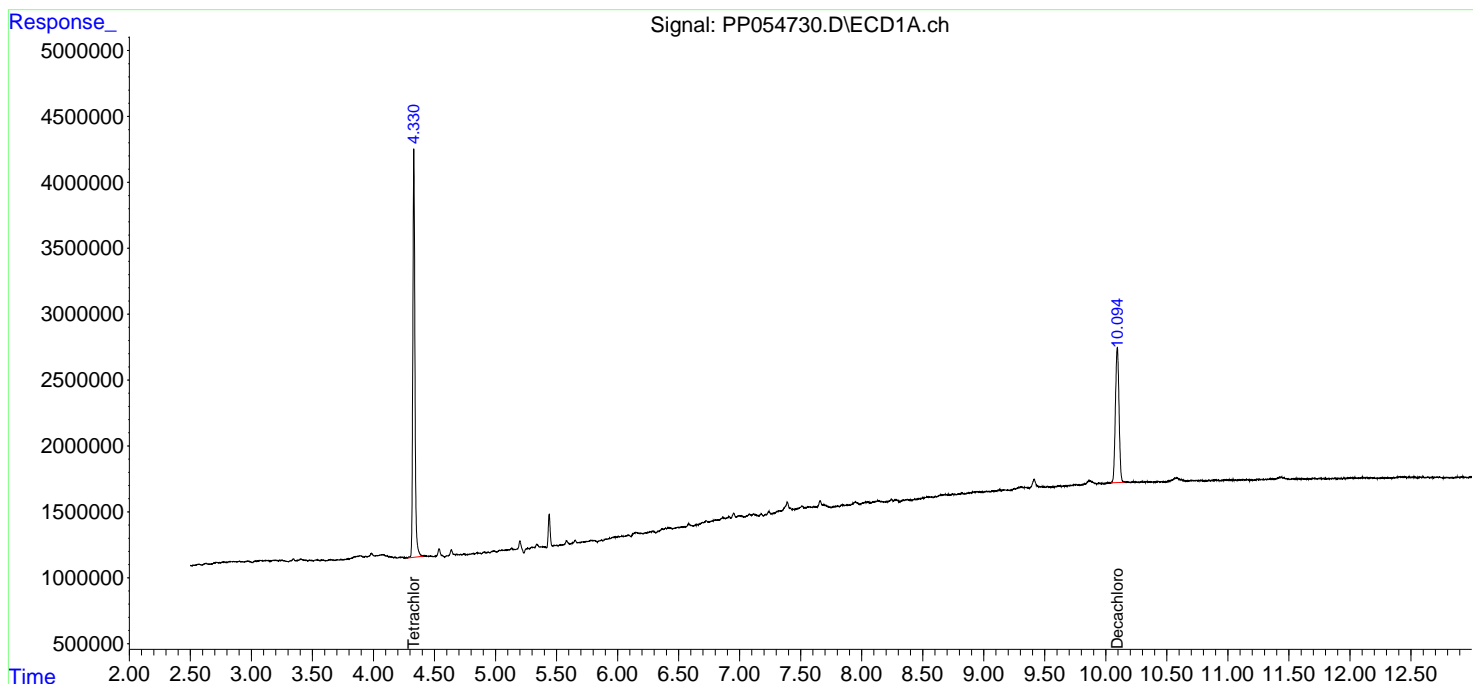
(f)=RT Delta > 1/2 Window (#)=Amounts differ by > 25% (m)=manual int.

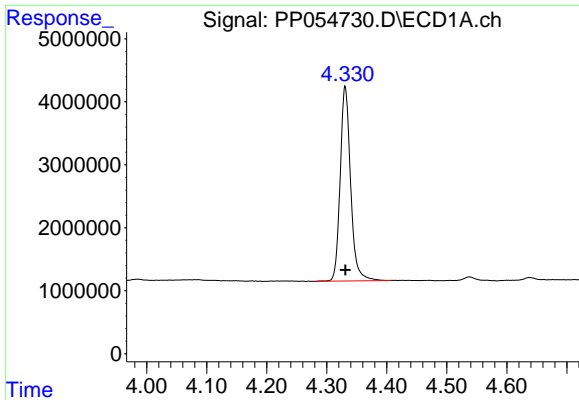
Data Path : Z:\pestpcbsrv\HPCHEM1\ECD_P\Data\PP011923\
 Data File : PP054730.D
 Signal(s) : Signal #1: ECD1A.ch Signal #2: ECD2B.ch
 Acq On : 19 Jan 2023 18:18
 Operator : YP\AJ
 Sample : 01214-05
 Misc :
 ALS Vial : 20 Sample Multiplier: 1

Instrument :
 ECD_P
 ClientSampleId :
 TJRC-011723-B3-10-20

Integration File signal 1: autoint1.e
 Integration File signal 2: autoint2.e
 Quant Time: Jan 19 20:58:18 2023
 Quant Method : Z:\pestpcbsrv\HPCHEM1\ECD_P\methods\PP011723.M
 Quant Title : GC EXTRACTABLES
 QLast Update : Wed Jan 18 04:34:06 2023
 Response via : Initial Calibration
 Integrator: ChemStation

Volume Inj. : 2 µl
 Signal #1 Phase : ZB-MR1 Signal #2 Phase: ZB-MR2
 Signal #1 Info : 30Mx0.32mmx 0.50µ Signal #2 Info : 30M x 0.32mm x 0.25µm

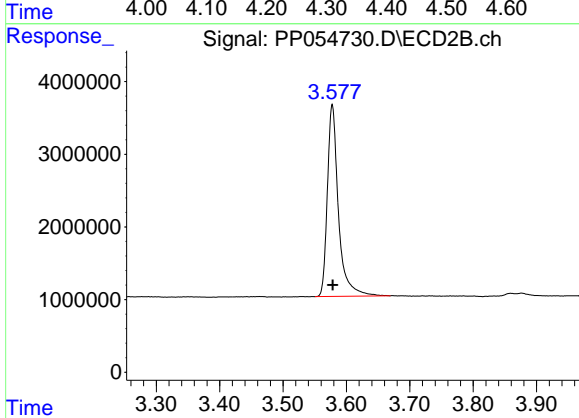




#1 Tetrachloro-m-xylene

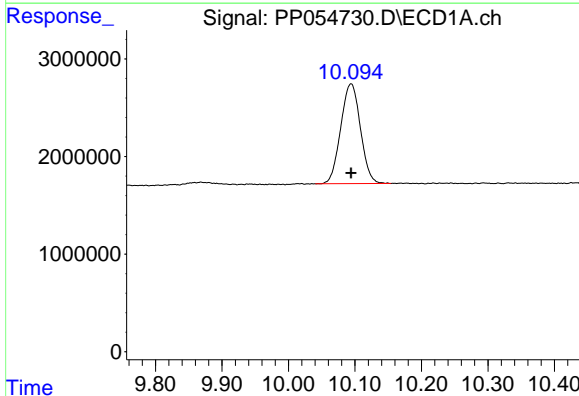
R.T.: 4.331 min
 Delta R.T.: 0.000 min
 Response: 37325165
 Conc: 20.33 ng/ml

Instrument :
 ECD_P
 ClientSampleId :
 TJRC-011723-B3-10-20



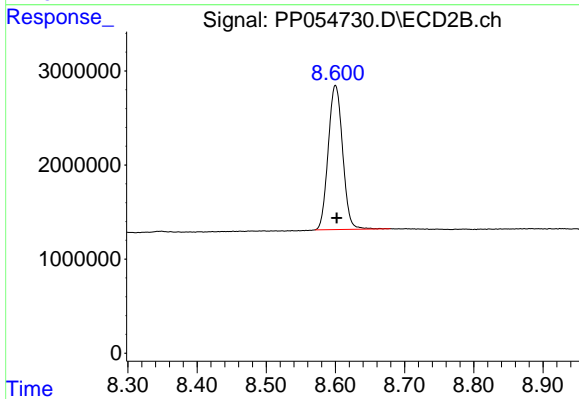
#1 Tetrachloro-m-xylene

R.T.: 3.578 min
 Delta R.T.: 0.000 min
 Response: 32085994
 Conc: 20.04 ng/ml



#2 Decachlorobiphenyl

R.T.: 10.094 min
 Delta R.T.: 0.000 min
 Response: 21070600
 Conc: 15.70 ng/ml



#2 Decachlorobiphenyl

R.T.: 8.600 min
 Delta R.T.: -0.002 min
 Response: 22192666
 Conc: 15.50 ng/ml